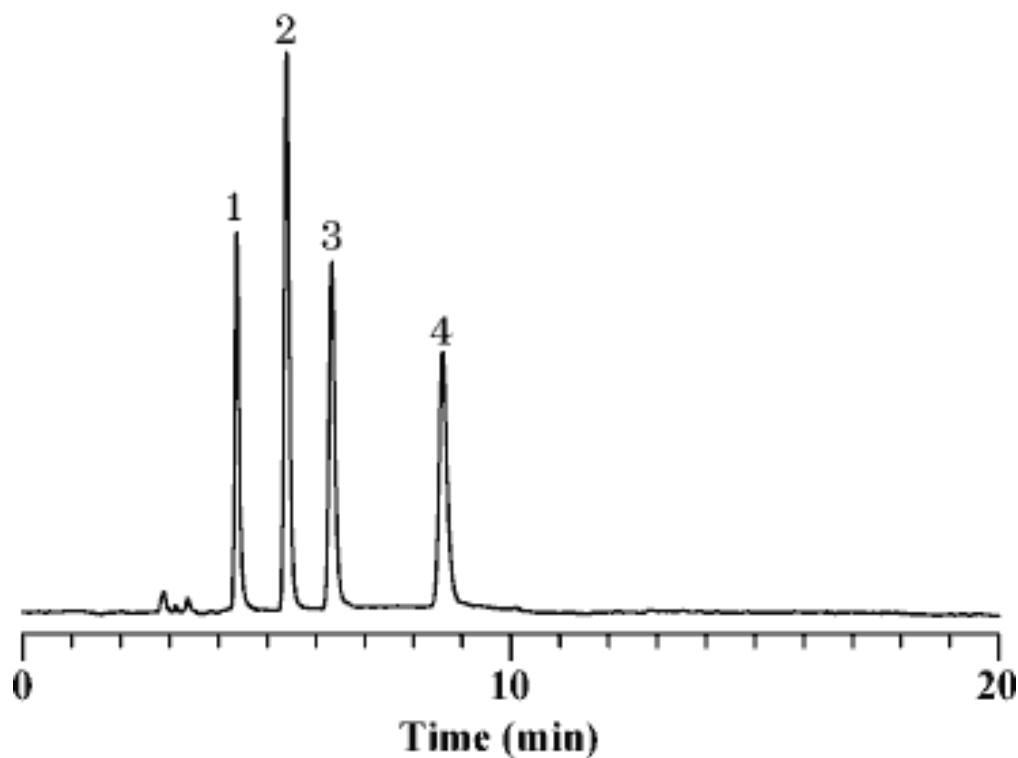


# InertSearch™ for LC

Inertsil® Applications

## Tocopherol

Data No. LA045-0000



Column : Inertsil NH2  
5 $\mu$ m  
250  $\times$  4.6 mm I.D.

Solutes : 1.  $\alpha$ -Tocopherol  
2.  $\beta$ -Tocopherol  
3.  $\gamma$ -Tocopherol  
4.  $\delta$ -Tocopherol

Column Cat. No. :

Eluent : Ethyl acetate/n-Hexane = 30/70

Flow rate : 1.0 mL/min.

Col. Temp. : 30°C

Detection : UV 290 nm

Injection Vol. : 1  $\mu$ L

Sample : Tocopherols