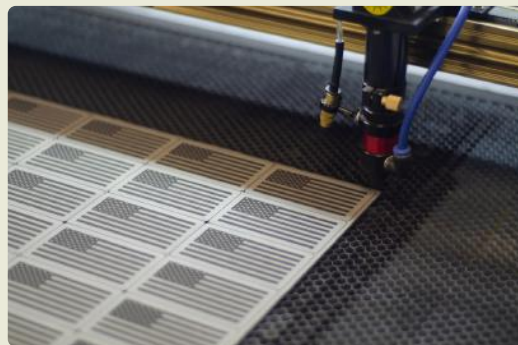
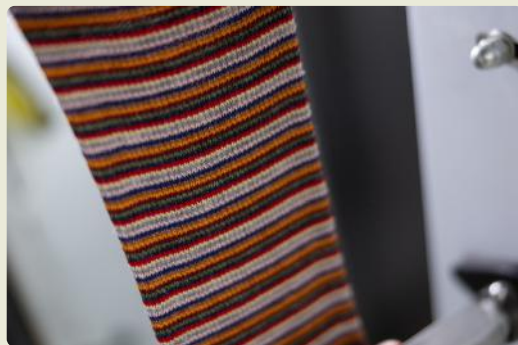
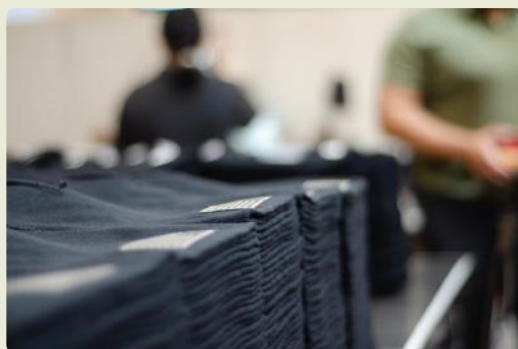
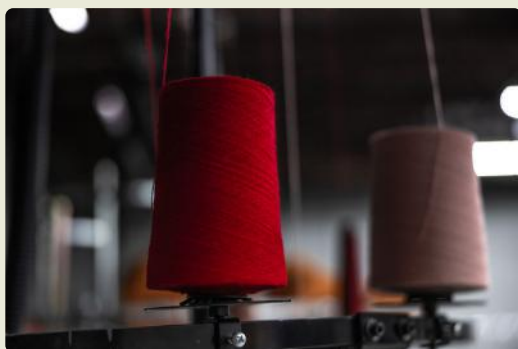
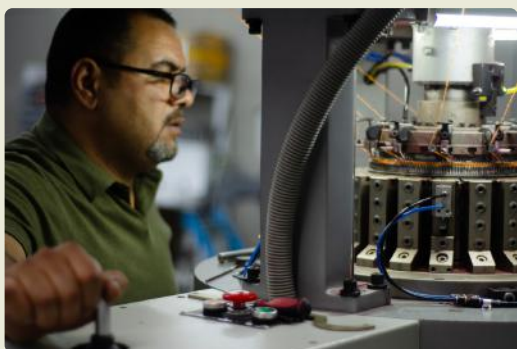




THE
Beanie
FACTORY®

HANDCRAFTED IN THE USA



IN STOCK. ON TREND. ON TIME.





HANDCRAFTED IN THE USA

IN STOCK. ON TREND. ON TIME.



Beanie
BASE



Beanie
FLEX



Beanie
PRO
Featuring the H® Stitch



Wholesale-ready

Manufactured entirely in Cleveland, Ohio, we control every step of the process—from yarn to finished hat. That means fast lead times, affordable pricing, lower minimums, and year-round availability. With overseas manufacturing costs rising, long delays, and high MOQs, we offer a smarter, more reliable alternative—without sacrificing quality.

IN STOCK. ON TREND. ON TIME.



H-Stitch™ Beanie

A revolution in headwear, engineered for those who demand more from their gear. Proudly made in Cleveland, Ohio, and protected under U.S. Patent No. 12,290,131-B2, this beanie isn't just different — it's smarter.

The patented **H-Stitch™** design eliminates the uncomfortable crown pressure point found in traditional beanies by relocating the seam structure to the sides. The result? An adaptive fit that stays comfortable all day — even under helmets & hard hats.



Patented H-Stitch™ Design

Eliminates top-seam pressure points for unmatched comfort, even under helmets.

Handcrafted in the USA

Proudly veteran-owned and Cleveland-based, with full domestic control of production.

One Size Fits Most

Flexible, adaptive fit that comfortably suits a wide range of head sizes.

Breathable Construction

Keeps you warm without overheating, ideal for all-day wear.

Versatile Style

From trails to city streets, it's the perfect balance of function and fashion.

100% Acrylic Yarn

Soft, durable, and made with open-dyed, short-cut fibers for vibrant color and premium feel.



"The design of the beanie for work use is ideal. I like the way it fits and how I don't sweat in the beanie."

- LUKE C.





Inside The Factory

Cuffed Solid H-Stitch Beanies



Page. 1

Uncuffed Solid H-Stitch Beanies



Page. 5

Cuffed Solid Traditional Beanies



Page. 9

Uncuffed Solid Traditional Beanies



Page. 13

Cuffed RORO H-Stitch Beanies



Page. 2

Uncuffed RORO H-Stitch Beanies



Page. 6

Cuffed RORO Traditional Beanies



Page. 10

Uncuffed RORO Traditional Beanies



Page. 14

Cuffed Contrast H-Stitch Beanies



Page. 3

Uncuffed Contrast H-Stitch Beanies



Page. 7

Cuffed Contrast Traditional Beanies



Page. 11

Uncuffed Contrast Traditional Beanies



Page. 15

Cuffed Fusion H-Stitch Beanies



Page. 4

Uncuffed Fusion H-Stitch Beanies



Page. 8

Cuffed Fusion Traditional Beanies



Page. 12

Uncuffed Fusion Traditional Beanies



Page. 16

Leatherette



Page. 19

Patches



Page. 18

Pom-Poms



Page. 17

Keychains



Page. 20

Childrens Beanies



Coming soon



Beanie

PRO

FEATURING THE H-STITCH



IN STOCK. ON TREND. ON TIME.

CATEGORY: PRO

MODEL: CUFFED, CIRCULAR KNIT, H STITCH, SOLID

STITCHING: H STITCH (PATENT NUMBER US-12290131-B2)

DESIGN HIGHLIGHT: ELIMINATES TOP-SEAM PRESSURE POINTS FOR UNMATCHED COMFORT, EVEN UNDER HELMETS.

COUNTRY OF ORIGIN: UNITED STATES OF AMERICA



BLACK
SKU # CCHS1BK



BEIGE
SKU # CCHS1BE



BLUE
SKU # CCHS1BL



BROWN
SKU # CCHS1BR



BURGUNDY
SKU # CCHS1BU



DENIM
SKU # CCHS1DN



GREEN
SKU # CCHS1GR



GRAY
SKU # CCHS1GY



MAROON
SKU # CCHS1MR



ORANGE
SKU # CCHS1OR



PINK
SKU # CCHS1PK



RED
SKU # CCHS1RD





Beanie

PRO

FEATURING THE H-STITCH



IN STOCK. ON TREND. ON TIME.

CATEGORY: PRO

MODEL: CUFFED, CIRCULAR KNIT, H STITCH, RORO

STITCHING: H STITCH (PATENT NUMBER US-12290131-B2)

DESIGN HIGHLIGHT: ELIMINATES TOP-SEAM PRESSURE POINTS FOR UNMATCHED COMFORT, EVEN UNDER HELMETS.

COUNTRY OF ORIGIN: UNITED STATES OF AMERICA



BROWN / GREEN
SKU # CCHR2BR-GR



BURGUNDY / GREEN
SKU # CCHR2BU-GR



BLACK / GREEN
SKU # CCHR2BK-GR



BLACK / RED
SKU # CCHR2BK-RD



GRAY / DENIM
SKU # CCHR2GY-DN



BLACK / GRAY
SKU # CCHR2BK-GY



BURGUNDY / PINK
SKU # CCHR2BU-PK



GRAY / GREEN
SKU # CCHR2GY-GR



BLUE / ORANGE
SKU # CCHR2BL-OR

GRAY / BLUE
SKU # CCHR2GY-BL



Beanie

PRO

FEATURING THE H-STITCH



IN STOCK. ON TREND. ON TIME.

CATEGORY: PRO

MODEL: CUFFED, CIRCULAR KNIT, H STITCH, CONTRAST

STITCHING: H STITCH (PATENT NUMBER US-12290131-B2)

DESIGN HIGHLIGHT: ELIMINATES TOP-SEAM PRESSURE POINTS FOR UNMATCHED COMFORT, EVEN UNDER HELMETS.

COUNTRY OF ORIGIN: UNITED STATES OF AMERICA



BROWN / GREEN
SKU # CCHC2BR-GR



BURGUNDY / GREEN
SKU # CCHC2BU-GR



BLACK / GREEN
SKU # CCHC2BK-GR



BLACK / RED
SKU # CCHC2BK-RD



GRAY / DENIM
SKU # CCHC2GY-DN



BLACK / GRAY
SKU # CCHC2BK-GY



BURGUNDY / PINK
SKU # CCHC2BU-PK



GRAY / GREEN
SKU # CCHC2GY-GR



BLUE / ORANGE
SKU # CCHC2BL-OR

GRAY / BLUE
SKU # CCHC2GY-BL



Beanie

PRO

FEATURING THE H-STITCH



IN STOCK. ON TREND. ON TIME.

CATEGORY: PRO

MODEL: CUFFED, CIRCULAR KNIT, H STITCH, FUSION

STITCHING: H STITCH (PATENT NUMBER US-12290131-B2)

DESIGN HIGHLIGHT: ELIMINATES TOP-SEAM PRESSURE POINTS FOR UNMATCHED COMFORT, EVEN UNDER HELMETS.

COUNTRY OF ORIGIN: UNITED STATES OF AMERICA



BROWN / GREEN
SKU # CCHF2BR-GR



BURGUNDY / GREEN
SKU # CCHF2BU-GR



BLACK / GREEN
SKU # CCHF2BK-GR



GRAY / GREEN
SKU # CCHF2GY-GR



GRAY / DENIM
SKU # CCHF2GY-DN



BLACK / GRAY
SKU # CCHF2BK-GY



BURGUNDY / PINK
SKU # CCHF2BU-PK



BLACK / RED
SKU # CCHF2BK-RD

BLUE / ORANGE
SKU # CCHF2BL-OR

GRAY / BLUE
SKU # CCHF2GY-BL



Beanie

PRO

FEATURING THE H-STITCH



IN STOCK. ON TREND. ON TIME.

CATEGORY: PRO

MODEL: UNCUFFED, CIRCULAR KNIT, H STITCH, SOLID

STITCHING: H STITCH (PATENT NUMBER US-12290131-B2)

DESIGN HIGHLIGHT: ELIMINATES TOP-SEAM PRESSURE POINTS FOR UNMATCHED COMFORT, EVEN UNDER HELMETS.

COUNTRY OF ORIGIN: UNITED STATES OF AMERICA



BLACK
SKU # UCHS1BK



BEIGE
SKU # UCHS1BE



BLUE
SKU # UCHS1BL



BROWN
SKU # UCHS1BR



BURGUNDY
SKU # UCHS1BU



DENIM
SKU # UCHS1DN



GREEN
SKU # UCHS1GR



GRAY
SKU # UCHS1GY



MAROON
SKU # UCHS1MR



ORANGE
SKU # UCHS1OR



PINK
SKU # UCHS1PK



RED
SKU # UCHS1RD





Beanie

PRO

FEATURING THE H-STITCH



IN STOCK. ON TREND. ON TIME.

CATEGORY: PRO

MODEL: UNCUFFED, CIRCULAR KNIT, H STITCH, RORO

STITCHING: H STITCH (PATENT NUMBER US-12290131-B2)

DESIGN HIGHLIGHT: ELIMINATES TOP-SEAM PRESSURE POINTS FOR UNMATCHED COMFORT, EVEN UNDER HELMETS.

COUNTRY OF ORIGIN: UNITED STATES OF AMERICA



BROWN / GREEN
SKU # UCHR2BR-GR



BURGUNDY / GREEN
SKU # UCHR2BU-GR



BLACK / GREEN
SKU # UCHR2BK-GR



GRAY / GREEN
SKU # UCHR2GY-GR



GRAY / DENIM
SKU # UCHR2GY-DN



BLACK / GRAY
SKU # UCHR2BK-GY



BURGUNDY / PINK
SKU # UCHR2BU-PK



BLACK / RED
SKU # UCHR2BK-RD

BLUE / ORANGE
SKU # UCHR2BL-OR

GRAY / BLUE
SKU # UCHR2GY-BL



Beanie

PRO

FEATURING THE H-STITCH



IN STOCK. ON TREND. ON TIME.

CATEGORY: PRO

MODEL: UNCUFFED, CIRCULAR KNIT, H STITCH, CONTRAST

STITCHING: H STITCH (PATENT NUMBER US-12290131-B2)

DESIGN HIGHLIGHT: ELIMINATES TOP-SEAM PRESSURE POINTS FOR UNMATCHED COMFORT, EVEN UNDER HELMETS.

COUNTRY OF ORIGIN: UNITED STATES OF AMERICA



BROWN / GREEN
SKU # UHC2BR-GR



BURGUNDY / GREEN
SKU # UHC2BU-GR



BLACK / GREEN
SKU # UHC2BK-GR



GRAY / GREEN
SKU # UHC2GY-GR



GRAY / DENIM
SKU # UHC2GY-DN



BLACK / GRAY
SKU # UHC2BK-GY



BURGUNDY / PINK
SKU # UHC2BU-PK



BLACK / RED
SKU # UHC2BK-RD

BLUE / ORANGE
SKU # UHC2BL-OR

GRAY / BLUE
SKU # UHC2GY-BL



Beanie

PRO

FEATURING THE H-STITCH



IN STOCK. ON TREND. ON TIME.

CATEGORY: PRO

MODEL: UNCUFFED, CIRCULAR KNIT, H STITCH, FUSION

STITCHING: H STITCH (PATENT NUMBER US-12290131-B2)

DESIGN HIGHLIGHT: ELIMINATES TOP-SEAM PRESSURE POINTS FOR UNMATCHED COMFORT, EVEN UNDER HELMETS.

COUNTRY OF ORIGIN: UNITED STATES OF AMERICA



BROWN / GREEN
SKU # UCHF2BR-GR



BURGUNDY / GREEN
SKU # UCHF2BU-GR



BLACK / GREEN
SKU # UCHF2BK-GR



GRAY / GREEN
SKU # UCHF2GY-GR



GRAY / DENIM
SKU # UCHF2GY-DN



BLACK / GRAY
SKU # UCHF2BK-GY



BURGUNDY / PINK
SKU # UCHF2BU-PK



BLACK / RED
SKU # UCHF2BK-RD

BLUE / ORANGE
SKU # UCHF2BL-OR

GRAY / BLUE
SKU # UCHF2GY-BL





Beanie

BASE



IN STOCK. ON TREND. ON TIME.

CATEGORY: BASE

MODEL: CUFFED, CIRCULAR KNIT, TRADITIONAL, SOLID

STITCHING: TRADITIONAL

DESIGN HIGHLIGHT: TRADITIONAL STITCH WITH SOLID COLOR.

COUNTRY OF ORIGIN: UNITED STATES OF AMERICA



BLACK
SKU # CCTS1BK



BEIGE
SKU # CCTS1BE



BLUE
SKU # CCTS1BL



BROWN
SKU # CCTS1BR



BURGUNDY
SKU # CCTS1BU



DENIM
SKU # CCTS1DN



GREEN
SKU # CCTS1GR



GRAY
SKU # CCTS1GY



MAROON
SKU # CCTS1MR



ORANGE
SKU # CCTS1OR



PINK
SKU # CCTS1PK



RED
SKU # CCTS1RD





Beanie

FLEX



IN STOCK. ON TREND. ON TIME.

CATEGORY: FLEX

MODEL: CUFFED, CIRCULAR KNIT, TRADITIONAL, RORO

STITCHING: TRADITIONAL

DESIGN HIGHLIGHT: TRADITIONAL STITCH, RORO

COUNTRY OF ORIGIN: UNITED STATES OF AMERICA



BROWN / GREEN
SKU # CCTR2BR-GR



BURGUNDY / GREEN
SKU # CCTR2BU-GR



BLACK / GREEN
SKU # CCTR2BK-GR



BLACK / RED
SKU # CCTR2BK-RD



GRAY / DENIM
SKU # CCTR2GY-DN



BLACK / GRAY
SKU # CCTR2BK-GY



BURGUNDY / PINK
SKU # CCTR2BU-PK



GRAY / GREEN
SKU # CCTR2GY-GR



BLUE / ORANGE
SKU # CCTR2BL-OR

GRAY / BLUE
SKU # CCTR2GY-BL



Beanie

FLEX



IN STOCK. ON TREND. ON TIME.

CATEGORY: FLEX

MODEL: CUFFED, CIRCULAR KNIT, TRADITIONAL, CONTRAST

STITCHING: TRADITIONAL

DESIGN HIGHLIGHT: TRADITIONAL STITCH, CONTRAST

COUNTRY OF ORIGIN: UNITED STATES OF AMERICA



BROWN / GREEN
SKU # CCTC2BR-GR



BURGUNDY / GREEN
SKU # CCTC2BU-GR



BLACK / GREEN
SKU # CCTC2BK-GR



BLACK / RED
SKU # CCTC2BK-RD



GRAY / DENIM
SKU # CCTC2GY-DN



BLACK / GRAY
SKU # CCTC2BK-GY



BURGUNDY / PINK
SKU # CCTC2BU-PK



GRAY / GREEN
SKU # CCTC2GY-GR



BLUE / ORANGE
SKU # CCTC2BL-OR

GRAY / BLUE
SKU # CCTC2GY-BL



Beanie

FLEX



IN STOCK. ON TREND. ON TIME.

CATEGORY: FLEX

MODEL: CUFFED, CIRCULAR KNIT, TRADITIONAL, FUSION

STITCHING: TRADITIONAL

DESIGN HIGHLIGHT: TRADITIONAL STITCH, FUSION

COUNTRY OF ORIGIN: UNITED STATES OF AMERICA



BROWN / GREEN
SKU # CCTF2BR-GR



BURGUNDY / GREEN
SKU # CCTF2BU-GR



BLACK / GREEN
SKU # CCTF2BK-GR



BLACK / RED
SKU # CCTF2BK-RD



GRAY / DENIM
SKU # CCTF2GY-DN



BLACK / GRAY
SKU # CCTF2BL-GR



BURGUNDY / PINK
SKU # CCTF2BU-PK



GRAY / GREEN
SKU # CCTF2GY-GR



BLUE / ORANGE
SKU # CCTF2BL-OR

GRAY / BLUE
SKU # CCTF2GY-BL





Beanie

BASE



IN STOCK. ON TREND. ON TIME.

CATEGORY: **BASE**

MODEL: **UNCUFFED, CIRCULAR KNIT, TRADITIONAL, SOLID**

STITCHING: **TRADITIONAL**

DESIGN HIGHLIGHT: **TRADITIONAL STITCH WITH SOLID COLOR.**

COUNTRY OF ORIGIN: **UNITED STATES OF AMERICA**



BLACK
SKU # UCTS1BK



BEIGE
SKU # UCTS1BE



BLUE
SKU # UCTS1BL



BROWN
SKU # UCTS1BR



BURGUNDY
SKU # UCTS1BU



DENIM
SKU # UCTS1DN



GREEN
SKU # UCTS1GR



GRAY
SKU # UCTS1GY



MAROON
SKU # UCTS1MR



ORANGE
SKU # UCTS1OR



PINK
SKU # UCTS1PK



RED
SKU # UCTS1RD





Beanie

FLEX



IN STOCK. ON TREND. ON TIME.

CATEGORY: FLEX

MODEL: UNCUFFED, CIRCULAR KNIT, TRADITIONAL, FUSION

STITCHING: TRADITIONAL

DESIGN HIGHLIGHT: TRADITIONAL STITCH, FUSION

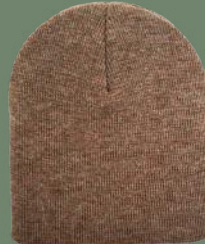
COUNTRY OF ORIGIN: UNITED STATES OF AMERICA



BROWN / GREEN
SKU # UCTF2BR-GR



BURGUNDY / GREEN
SKU # UCTF2BU-GR



BLACK / GREEN
SKU # UCTF2BK-GR



BLACK / RED
SKU # UCTF2BK-RD



GRAY / DENIM
SKU # UCTF2GY-DN

BLACK / GRAY
SKU # UCTF2BK-GY



BURGUNDY / PINK
SKU # -UCTF2BU-PK



GRAY / GREEN
SKU # UCTF2GY-GR



BLUE / ORANGE
SKU # UCTF2BL-OR

GRAY / BLUE
SKU # UCTF2GY-BL





Beanie

FLEX



IN STOCK. ON TREND. ON TIME.

CATEGORY: FLEX

STYLE: UNCUFFED DUAL-TONE RORO

STITCHING: TRADITIONAL

DESIGN HIGHLIGHT: FEATURES TWO BOLD STRIPES

COUNTRY OF ORIGIN: UNITED STATES OF AMERICA



BROWN / GREEN
SKU # CTD233



BURGUNDY / GREEN
SKU # CTD232



BLACK / GREEN
SKU # CTD220



GRAY / GREEN
SKU # CTD227



GRAY / DENIM
SKU # CTD228



BLACK / GRAY
SKU # CTD226



BURGUNDY / PINK
SKU # CTD231





Beanie

FLEX



IN STOCK. ON TREND. ON TIME.

CATEGORY: FLEX

STYLE: CUFFED DUAL-TONE CONTRAST

STITCHING: TRADITIONAL

DESIGN HIGHLIGHT: FEATURES TWO THICK STRIPES AND TWO THIN STRIPES

COUNTRY OF ORIGIN: UNITED STATES OF AMERICA



BROWN / GREEN
SKU # CTD333



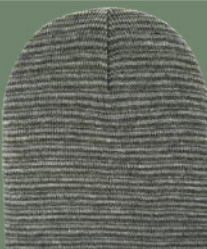
BURGUNDY / GREEN
SKU # CTD332



BLACK / GREEN
SKU # CTD320



GRAY / GREEN
SKU # CTD327



GRAY / DENIM
SKU # CTD328



BLACK / GRAY
SKU # CTD326



BURGUNDY / PINK
SKU # CTD331





IN STOCK. ON TREND. ON TIME.

HANDCRAFTED POMPOM

DESIGN HIGHLIGHT: 100% ACRYLIC HAND CRAFTED POMPOM

COUNTRY OF ORIGIN: UNITED STATES OF AMERICA -



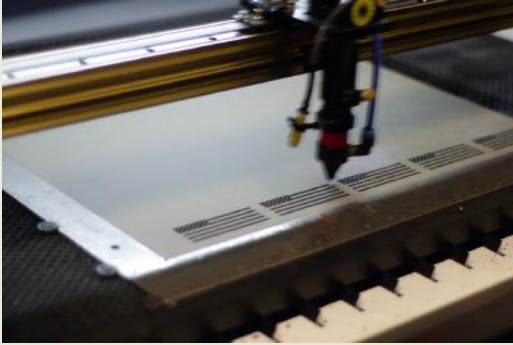
 BLACK	 BEIGE	 BLUE	 BLACK/GRAY	 GRAY/DENIM
 BROWN	 BURGUNDY	 DENIM	 BROWN/GREEN	 BURGUNDY/GREEN
 GREEN	 GRAY	 MAROON	 PINK/BURGUNDY	 GREEN/BLACK
 ORANGE	 PINK	 RED	 RED/BLACK	 GRAY/GREEN



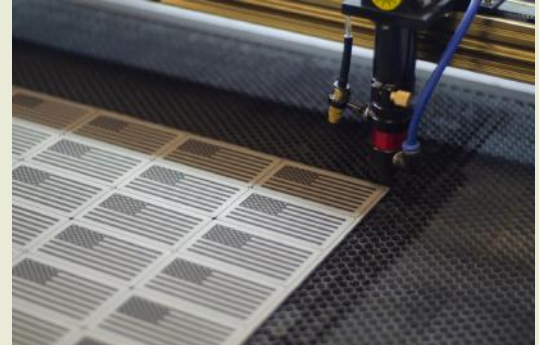
CUSTOM



PATCHES



SHAPES

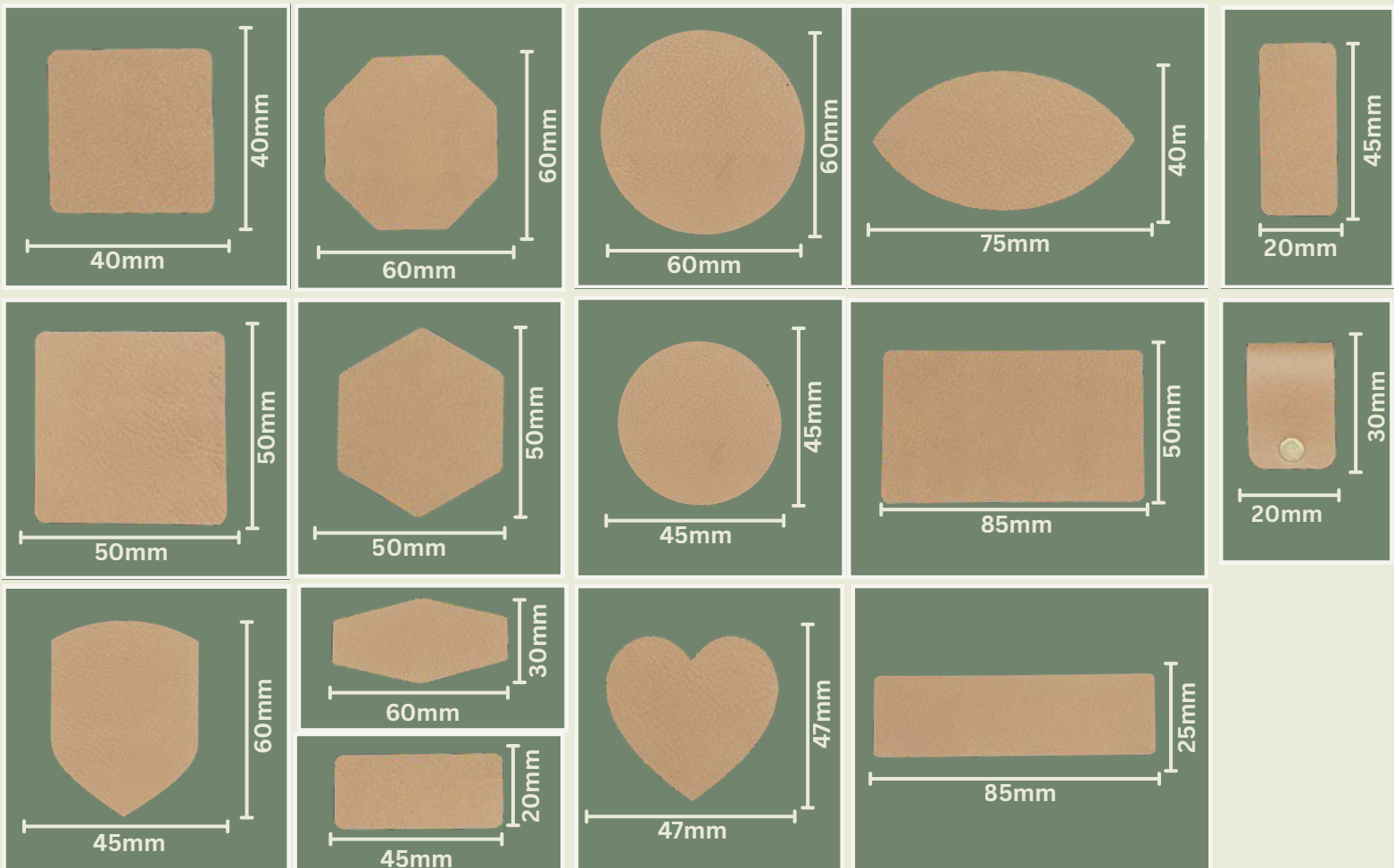


CATEGORY: LEATHERETTE PATCHES

STYLE: LASER ENGRAVED

STITCHING: MACHINE STITCHED TO BEANIE

DESIGN HIGHLIGHT: AVAILABLE IN MANY SHAPES/COLORS. CUSTOM SHAPE OPTIONS ARE AVAILABLE



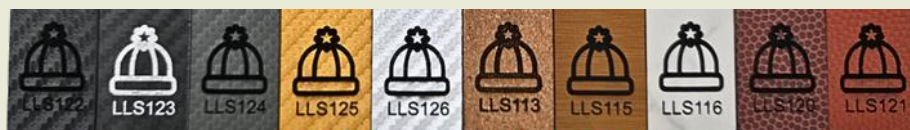
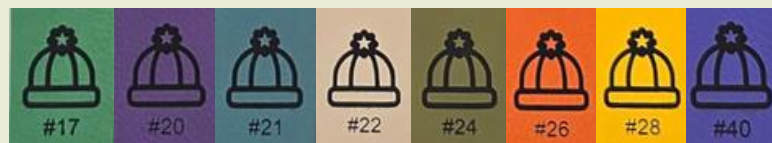
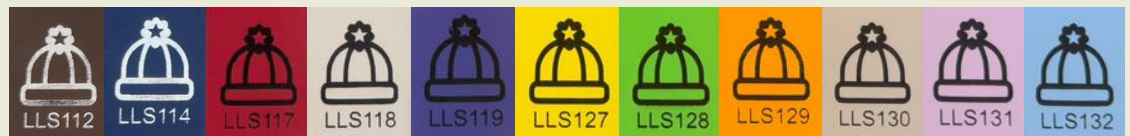


CATEGORY: LEATHERETTE COLORS

STYLE: LASER ENGRAVED

STITCHING: MACHINE STITCHED TO BEANIE

DESIGN HIGHLIGHT: AVAILABLE IN MANY SHAPES/COLORS. CUSTOM SHAPE OPTIONS ARE AVAILABLE





IN STOCK. ON TREND. ON TIME.

CUSTOM KEYCHAIN

DESIGN HIGHLIGHT: CUSTOM MADE LEATHERETTE KEYCHAINS

MADE WITH NFC TAGS AND OR WITHOUT.

AVAILABLE IN MANY SHAPES AND COLORS WITH CUSTOM SHAPE OPTIONS



Smart +
Keychain



Smart +
Keychain



Smart +
Keychain





CAPABILITIES

The Beanie Factory delivers high-quality headwear, custom-branded hats, promotional items, and accessories. With versatile customization and strong production capabilities, we turn ideas into standout products that combine style, function, and scale.

Headwear Capabilities

- Custom knit beanies (various styles, fits, and colors)
- Patented H Stitch seam design for comfort
- Blank beanies for resale, uniforms, and promotions
- Pom-pom attachment and customization
- Private label and branding options

Branding & Customization

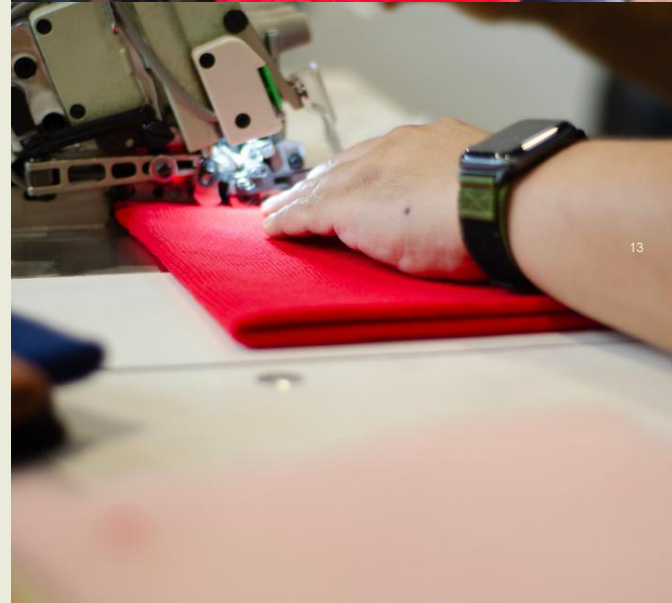
- Leatherette patches and accents
- Custom-shaped patches and applications
- Embroidery (logos, text, designs)
- Sewn-on applications for durable branding
- Laser engraving on tags, keychains, and accessories
- Custom packaging and labeling

Accessories & Promotional Product

- Custom keychains (with or without NFC technology)
- Promotional items for events, giveaways, and corporate gifts
- Sustainable packaging solutions
- Flexible production for both small and large volume orders

Production Strengths

- U.S. based manufacturing facility in Parma, Ohio
- Low minimums starting at 60 units
- Scalable production capacity for larger runs
- Quick turnaround times
- Fair labor and sustainable sourcing practices





AMERICAN MADE HIGH-PERFORMANCE HEADWEAR

KNIT TO LAST IN CLEVELAND, OHIO, FROM FIRST STITCH TO FINAL TOUCH.



Made in the USA

We're proud to be a part of the textile renaissance in northeast Ohio, manufacturing all our beanies in our Parma factory. Our veteran-owned and veteran-run company is committed to supporting our community and country in all aspects.



Quick Production Times

Stop waiting months for your private-label and wholesale beanie orders. Our factory is designed to scale, so we keep up as demand grows. No waiting, no wondering — just transparent (and short) lead times.



Low order minimums

Order sizes start at just 60 beanies, perfect for outfitting small businesses and teams. The ceiling, though, is unlimited. Our factory supports large, significant order sizes that meet your needs.



Affordable domestic pricing

"Made in the U.S.A." doesn't mean expensive. our pricing is competitive to overseas manufacturers, without cutting corners or giving up quality.



Soft, Breathable Comfort

No tight elastic bands—just a cozy fit that keeps you cool and comfy all day long.

Premium Acrylic Yarn

Crafted with open-dyed, short-cut fibers for vibrant color, structure, and a high-end finish.

Stylish, Everyday Wear

Designed to look great on the shelf and feel even better on your head.

Handcrafted in the USA

Proudly veteran-owned and Cleveland-based, with full domestic control of production.

Fast Lead Times & Low MOQs

Skip the long delays and massive minimums of overseas sourcing.

Affordable Domestic Pricing

Competitive pricing that helps you keep margins strong without compromising quality.



Sustainability at The Beanie Factory



Our Commitments

At The Beanie Factory, we believe that sustainability should be woven into every step of making custom beanies. As specialists in premium winter headwear, we're committed to delivering high-quality custom beanies and blank beanies while reducing our environmental impact and ensuring responsible practices across our production.

- **Ethically Sourced Yarns** – All of our beanies are made from carefully selected yarns, giving us full control over quality and responsibility.
- **Eco-Friendly Packaging** – We are actively removing single-use plastics from our packaging and replacing them with recyclable, paper-based solutions.
- **Durable, Long-Lasting Beanies** – Unlike fast fashion, our custom beanies are designed to last multiple seasons, supporting a more sustainable approach to fashion.
- **Fair Manufacturing Practices** – As the factory, we take pride in ensuring fair labor standards and strong, transparent supplier relationships.

Circularity and Responsibility

We support circularity by focusing on durable design, recyclable packaging, and efficient yarn use to minimize waste. Our goal is to keep materials in use for as long as possible and reduce unnecessary impact on the environment.



Looking Ahead

By 2028, we aim to:

- Fully eliminate plastic from our packaging process.
- Expand biodegradable and recyclable options across all custom orders.
- Continue publishing transparent updates through annual sustainability reports.

Knit with Purpose, Crafted for the Future.



Built for the Trades. Made for Your Brand.

The details matter when it comes to selecting the right beanie. Ask someone who spends long days in rain or snow, takes long hikes in the wilderness, or wears a helmet day in, day out. From our superior stretch and breathability to our patented, lay-flat seams, those little differences are what set The Beanie Factory products apart.



Our American Story



U.S. Army veteran H. Hamoud spent countless hours in uniform — a uniform that included a bulky, constricting, sweaty, and itchy hat underneath an already-heavy helmet. To say he was uncomfortable while in the field was an understatement. He wasn't alone, either: fellow troops had the same complaint about the beanies they had to wear.

When he was honorably discharged as a disabled veteran from the service, Hamoud set out on a mission to find a beanie that would keep other soldiers — as well as tradespeople, hobbyists, or anyone who hates restricting clothing — comfortable. He first tackled the seams that dug uncomfortably into his scalp, inventing a new configuration that didn't cause bunching, itching, or rubbing.

The Beanie Factory, and the patented H-stitch, were born...





THE *Beanie* FACTORY™

HANDCRAFTED IN THE USA



Member #58851



The Beanie Factory by Haakwear

5319 Broadview Rd, Parma Ohio 44134 | www.TheBeanieFactory.US | Cr@tbfus.com | (216) 389-9253