

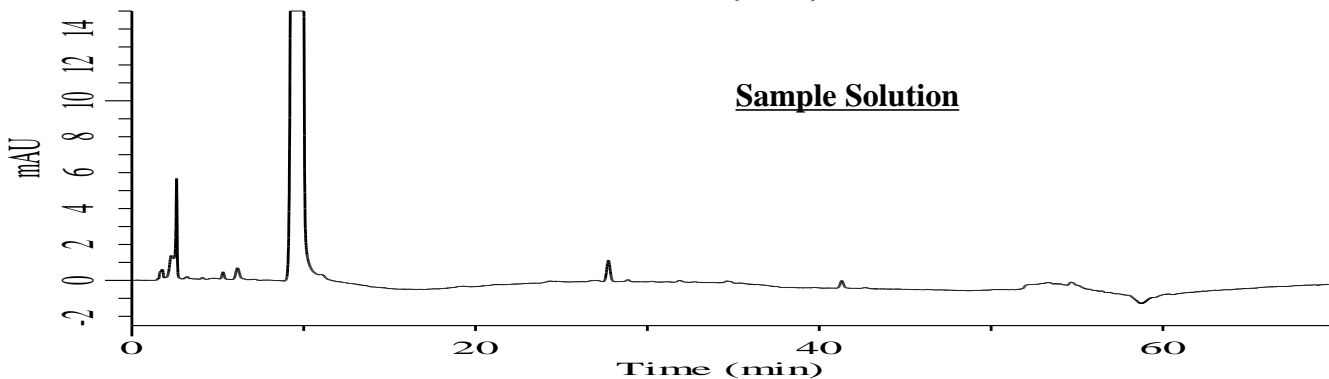
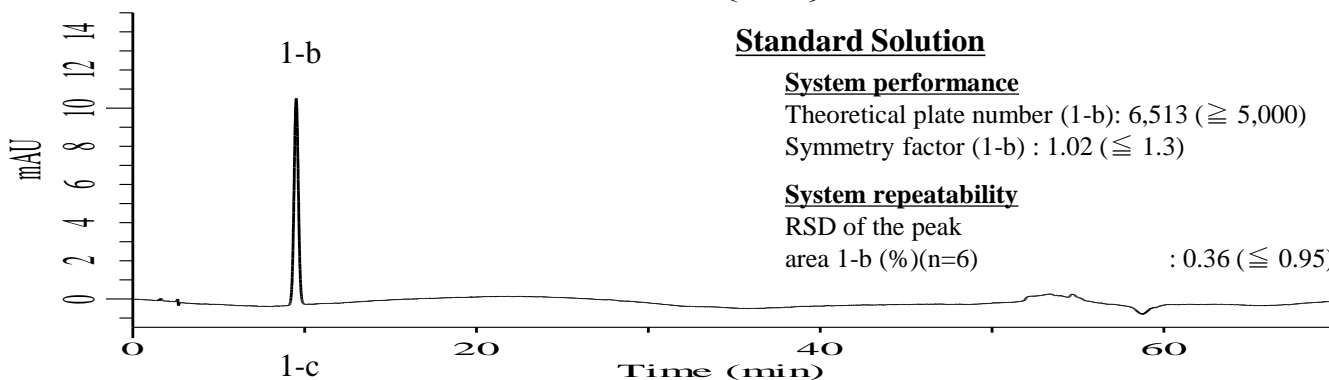
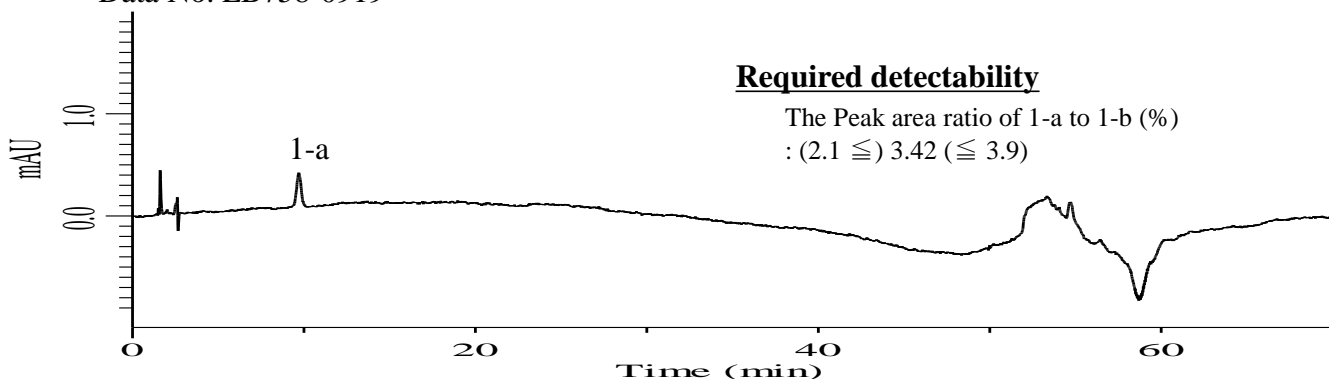
# InertSearch™ for LC

Inertsil® Applications

## Analysis of Doripenem

(Under the Condition of the Japanese Pharmacopoeia 18th, Doripenem Hydrate)

Data No. LB758-0919



### Conditions

**System** : Chromaster HPLC system (HITACHI)

**Column** : InertSustain C18 (GL Sciences Inc.)  
(5 μm, 150 x 4.6 mm I.D.)

**Column Cat. No.** : 5020-07345

**Eluent** : A) Solution\*/CH<sub>3</sub>CN = 97/3, v/v  
B) Solution\*/CH<sub>3</sub>CN = 70/30, v/v

**Flow Rate** : 1.0 mL/min

**Col. Temp.** : 30 °C

**Detection** : UV 230 nm

**Injection Vol.** : 20 μL

**Sample** : Standard

### Analyte

1. Doripenem

Time (min)	A (vol%)	B (vol%)
0.0	100	0
15.0	100	0
45.0	50	50
50.0	0	100
55.0	0	100

\*Dissolve 2.04 g of potassium dihydrogen phosphate in water to make 1000 mL, and adjust to pH 5.6 - 5.7 with a solution prepared by dissolving 2.61 g of dipotassium hydrogen phosphate in water to make 1000 mL.