



HikCentral Professional

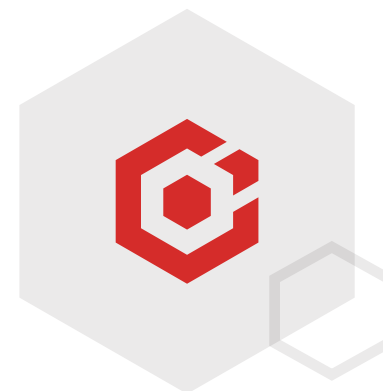
v3.0

up GRADED
Architecture

HIKVISION®



What is HikCentral Professional



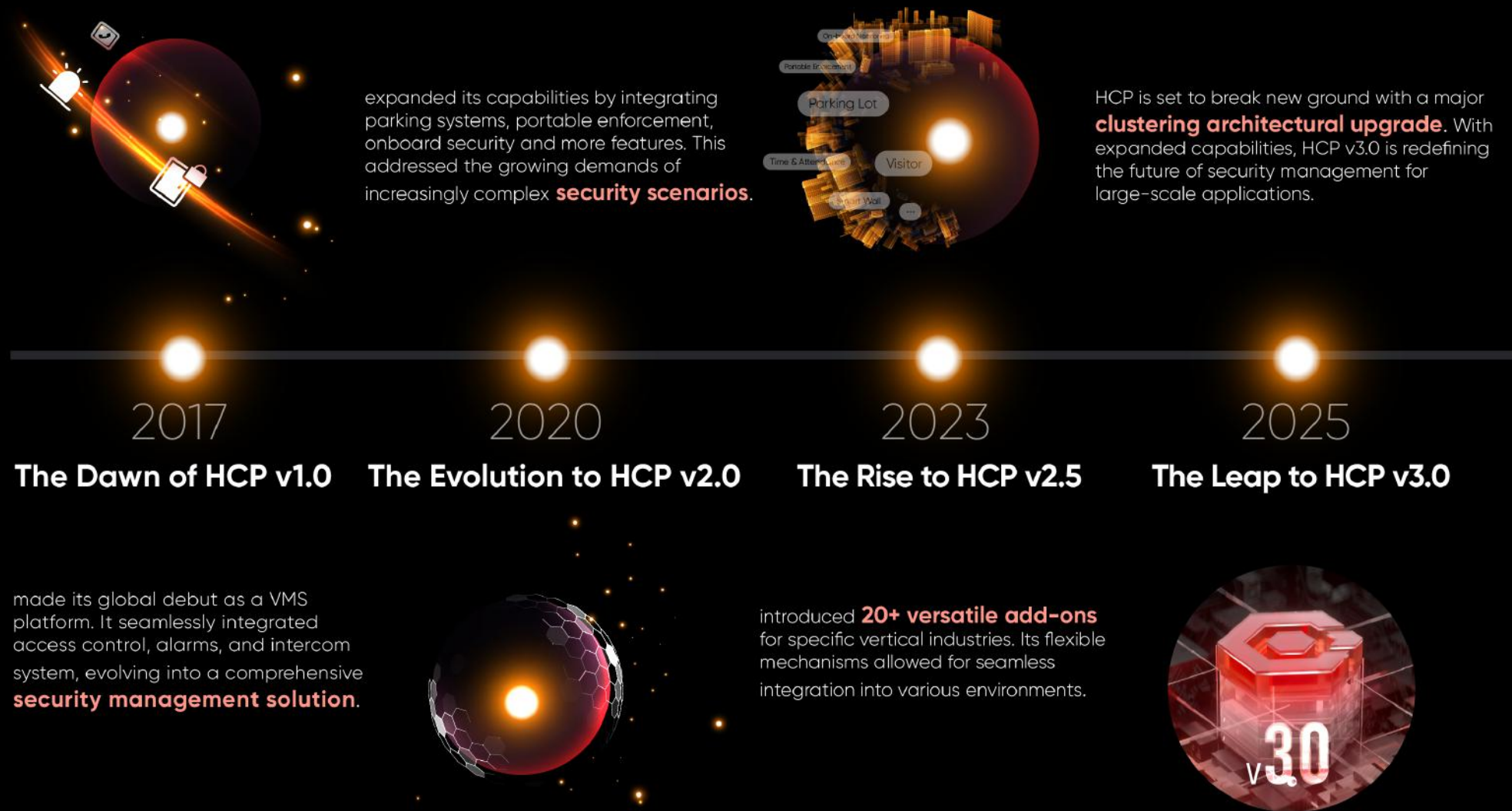
HikCentral Professional (HCP) – Hikvision's advanced security management software – helps professionals tackle various security obstacles on one platform. You can seamlessly manage individual systems with ease, such as video, access control, alarm detection, and more.

Now with a major clustering architectural upgrade, HikCentral Professional v3.0 delivers exceptional scalability and performance tailored to your business growth, making it ideal for large-scale applications. Join countless professionals who rely on HCP to stay ahead in day-to-day security management.

Trusted by customers in
 **200+**
countries & regions

Connect to over
 **7,000,000+**
security devices

HikCentral Professional Milestone



Key Benefits

02

Integration & Partnership

08

Core Applications

01 Video

09

02 Access Control

11

Advanced Applications

12

01 Smart Wall

13

02 Time & Attendance

13

03 Parking Lot

14

04 Visitor

15

05 Intrusion Detection

16

06 On-Board Monitoring

17

07 Intelligent Analysis

18

08 Portable Enforcement

19

09 Evidence Management

19

10 AR

20

11 Guard Patrol

20

12 Commercial Display

21

13 Security Inspection

21

14 Emergency Mustering

22

15 Remote Site Management (RSM)

23

Innovative Industrial Applications

24

01 Parcel Tracking

24

02 Dock Management

25

03 Canteen Consumption

25

04 Intelligent Inspection

26

05 Smart Education

27

Key Benefits

An upgraded clustering architecture

HikCentral Professional v3.0 introduces a robust and flexible clustering architecture that allows businesses to expand server resources on demand.

Master-slave clustering

A single master server can be dynamically scaled to 5 slave servers, supporting up to 55,000 devices and 50,000 video channels.

Hot standby solutions

Ensure uninterrupted operations with hot standby master and slave servers, ready to take over immediately during server failures.

Data management

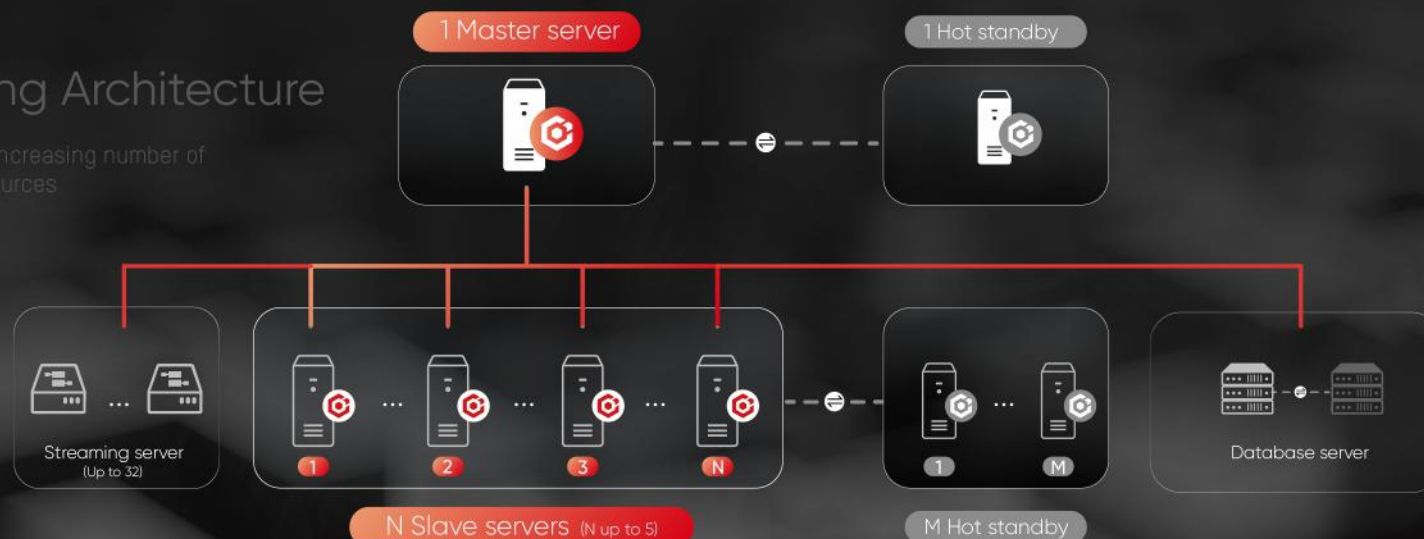
Robust storage and redundancy with an external PostgreSQL database supporting billions of records for rapid storage and retrieval.

Elevated streaming performance

Optimized for external streaming media and supports streaming server clusters powered by load-balancing technologies, improving resource use and smooth video retrieval during peak usage.

Clustering Architecture

Scales up to an increasing number of devices and resources



*Resources can be allocated as needed.



Diverse business applications to choose from

All major security needs are covered through a variety of security modules, including video, access control, visitor, time & attendance, parking lot, on-board monitoring, alarm detection, intelligent analysis, commercial display, and more. Whatever your situation, you will find what you need right here.

A unified security system that enhances management operations

HikCentral Professional unifies a wide range of applications and provides a seamless solution for your business, from basic to advanced needs – for example, an intrusion alarm plus access control combine with video verification, or perhaps visitor access with pre-registration of vehicles, and much more.

The centralized management of multi-level roles empowers users with optimized efficiency.

Lightweight solutions for diverse scenarios

HikCentral Professional offers ready-to-go solutions for specific scenarios like stores, logistics parks, bus stations, etc., improving their daily security and operation with data insights and unified management.

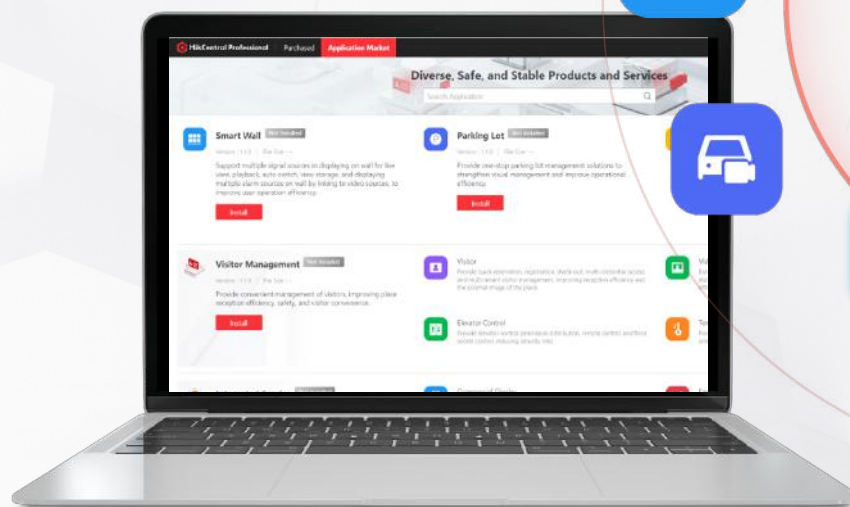
Flexible and expandable for customized experience

There are two system installation options for HikCentral Professional, based on your specific needs:

Option One: Full installation of HikCentral Professional

Option Two: Core application package with the flexibility to purchase and deploy add-on functions from the Application Market in HikCentral Professional

The base package, including video and access control, now requires minimal server performance (starting from i3, 4GB RAM). Easily expand functionalities by accessing the **Application Market**, where diverse applications are available for different business needs and industry specifics. From general security enhancements to specialized tools for specific industries or regions, you can customize setup for improved management and efficiency.



Easy operations

User-friendly interface with visualized design and wizards.



Simplified installation

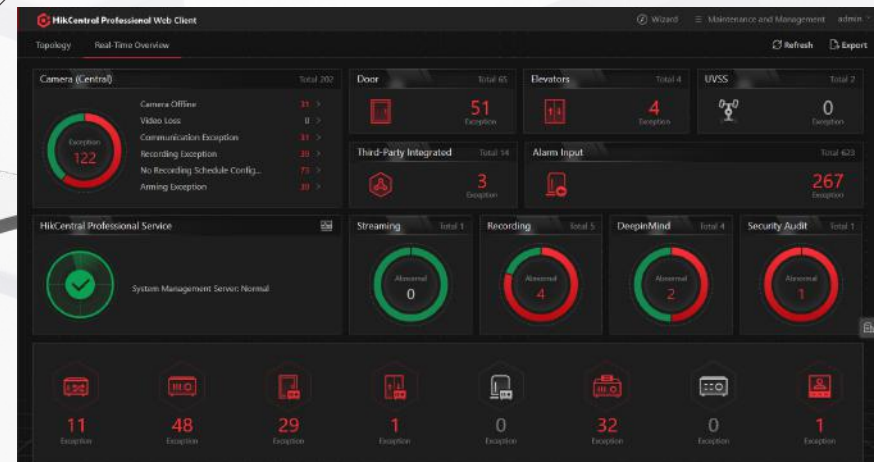
Minimum system requirements for HikCentral Professional is an i3 CPU and 4 GB of RAM.

Easy maintenance

System health status is displayed visually in real time, contributing to faster notifications and locating of abnormal situations. What's more, all system historical records are conveniently trackable.

Role-based permission control

Personalized content display based on your role makes you focus on the applications that matter most.



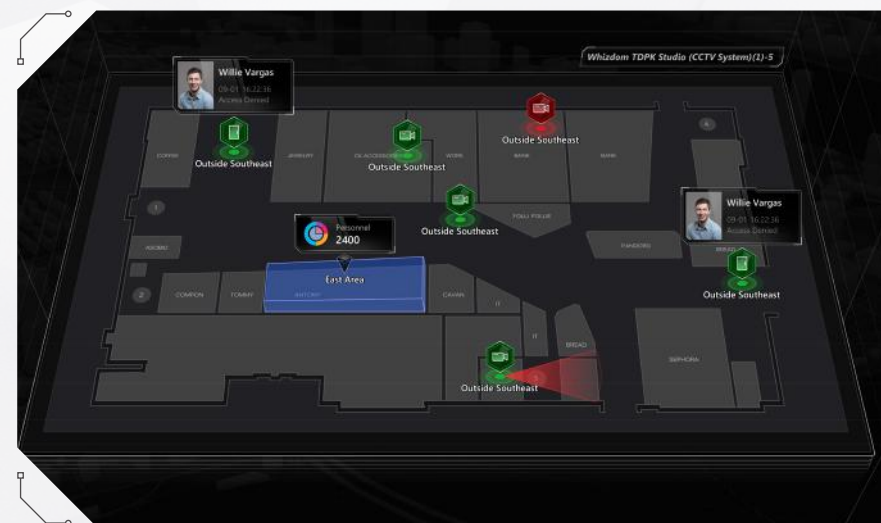
Visualized systems for better insights

Alarm management, event tracking and AR live interaction in a visualized way make it easy to understand data from various applications. The dashboard supports creating a personalized display for the information you care about the most, contributing to smarter decision-making with more situational awareness.



Interactive E-Maps

Interactive E-Maps give users an instant, dynamic view of multiple sites and the status of various devices all at the same time, as well as a shortcut to handle events and alarms directly onboard. It enables management and security staff to get accurate and timely notifications while responding to incidents promptly, enhancing day-to-day operational efficiency.





Open system architecture allows easy and convenient integration



Strong integration capabilities

The robust integration capabilities ensure powerful, innovative solutions, extending functionality beyond security to meet diverse demands and requirements.

HikCentral Professional can seamlessly integrate to various systems (e.g., WMS, AMS/CMS, BMS) and manage other devices (e.g., cameras, alarm panels, HVACs, NVRs) via standardized protocols like Onvif, BACnet, SIA and Modbus.



OpenAPIs

Comprehensive OpenAPIs

We offer a suite of professional APIs for your convenience, including a No Plugin Solution delivered through web portal. With our APIs, you can access technical documentation and code samples specifically structured to simplify your system building journey.

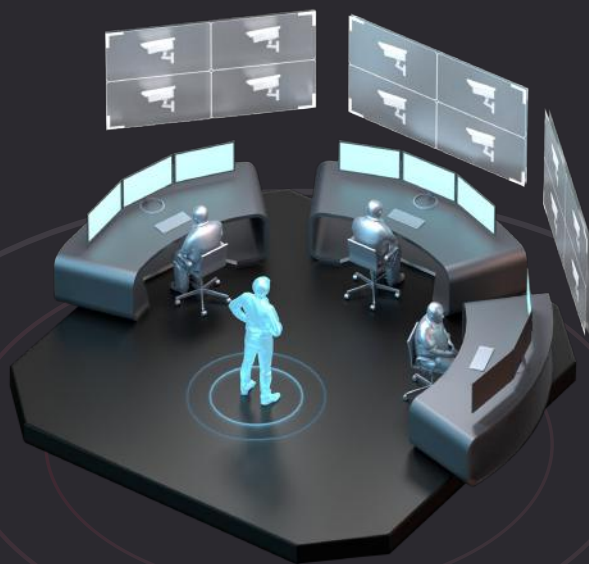
We continuously improve with industry developments by adding new APIs and standardized protocols. You can rely on us to provide you with the cutting-edge technologies.

Shared success with global partners

We collaborate with global technology partners to implement time-tested solutions. Our goal is to extend Hikvision's product benefits to you, so together we deliver reliable and expert solutions to meet our customers' needs.

Core Applications

01 Video



Efficient and comprehensive video security

Quickly save scenes and efficiently complete daily monitoring. Users can customize their own view to have a holographic perception of all videos, maps and data. Specified views can be opened in one minute for quick preview and playback.

Quick and convenient search and playback

- Users will enjoy the quick incident search and location using thumbnails, smooth playback, adaptive dual-stream, and half-interval search
- Convenient event search is based on tags and smart search analysis, as well as key attributes of vehicles and persons
- Detect persons in real time with AcuSearch and search across various devices for additional appearances

Low bandwidth network adaptability

Smooth streaming automatically adjusts bitrate and resolution between clients and NVRs or network cameras according to real-time network conditions.

Flexible auto-patrolling

Users are able to set up scheduled capture plan based on actual scenarios or needs, and the captured pictures will be sent to users automatically.

Versatile audio broadcasting

Integrating the video security expertise with smart audio capabilities, Hikvision network speaker offers an advanced audio & video linkage solution.

- Centrally control multiple audio devices and broadcast live or pre-recorded voice messages in real time to multiple zones
- Multiple broadcast modes such as scheduled, alarm linkage and emergency mustering, ensuring accurate and timely delivery of critical information

Video export as evidence

- Supports merging several clips into one downloadable video file, making management workflow simpler and easier
- File export is available in various formats including exe., avi., mp4, and more

Reliable storage satisfies diversified needs



Flexible storage

HikCentral Professional offers event-triggered video recording and playback, along with automated video backup during idle periods. Channel-based video and image storage can be configured as well.



Multiple storage media

Video and images can be stored on various media storage platforms, such as NVRs / DVRs, pStor, Hybrid SAN, and Cluster Storage Servers.



High availability

HikCentral Professional features a fail-safe / high availability design with redundant remote & local backup and scheduled copy-back, along with pStor cluster services and NVR hot swapping.

02 Access Control

Comprehensive and flexible access management

Get flexible, customized, and comprehensive access control systems for employees and visitors with diverse credentials including face, iris, fingerprint, card, dynamic QR code, PIN code, mobile credentials including Bluetooth, 512 authentications, and 5 access strategies to choose from, for hundreds of scenarios.



Easy and convenient personnel management

With HikCentral Professional, HRs and managers can easily assign various groups of people with different credentials with step-by-step guidance, manage employee on-board and demission procedures easily, and more.

To register, employees can use their smartphone to scan a QR code generated by HikCentral Professional and register their information remotely; they will receive access permission instantly.

What's more, with HikCentral Professional, it is easier than ever to enter employee information and design their badge with several unique styles and layouts to choose from. With a few clicks, managers can enter their information and print employee badges with all necessary access permissions.

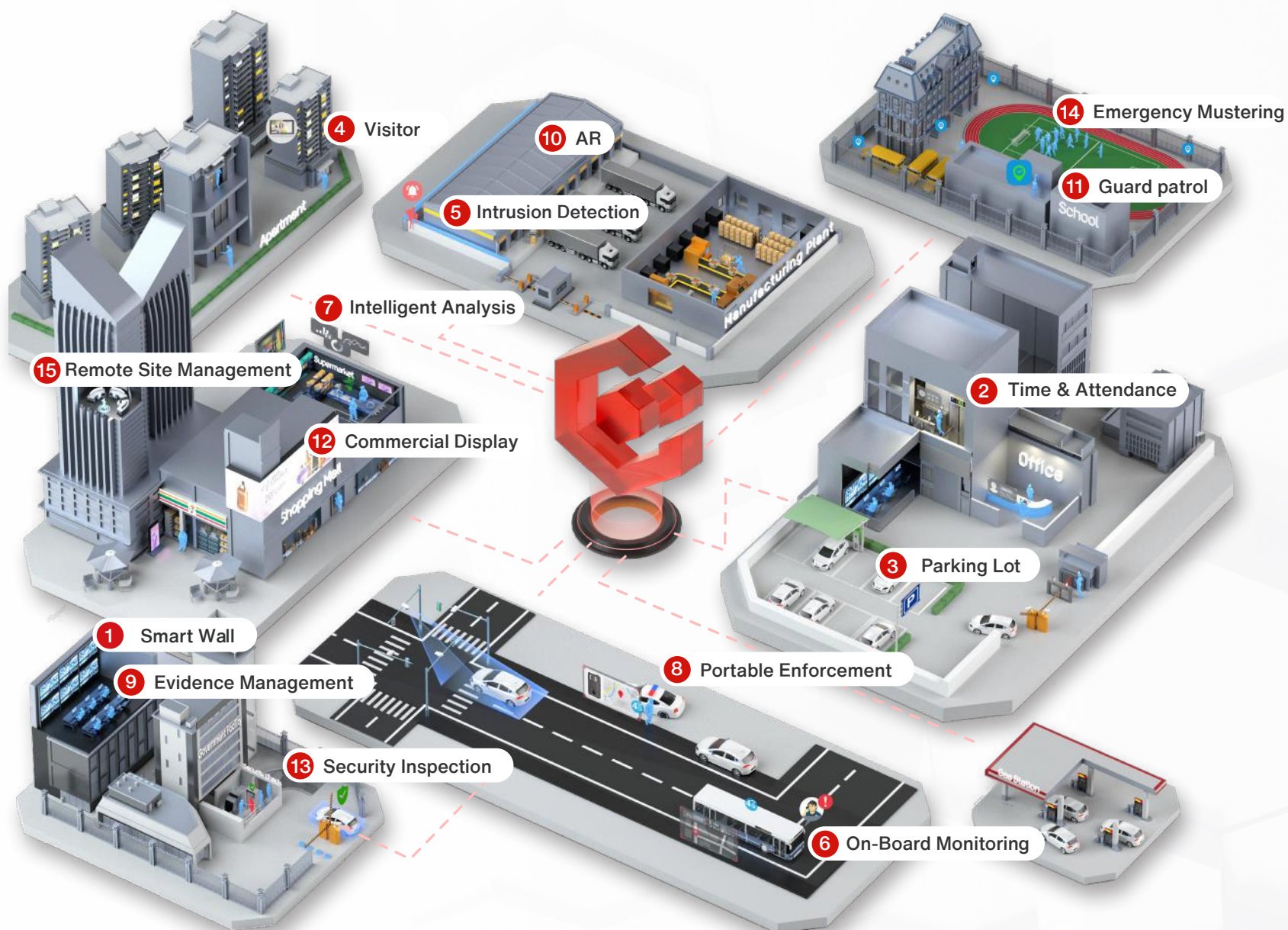


Quick alarm handling

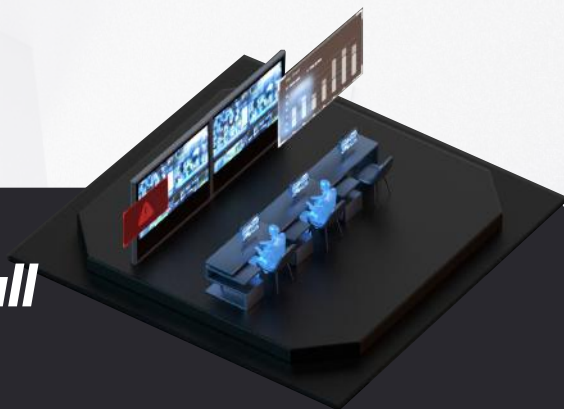
When incidents occur, the access control system will trigger network cameras to capture images and record videos. Security staff can check the video in real time and take multiple any necessary action.

The abnormal access points can be detected timely using e-maps, and the abnormalities are addressed efficiently through video verification.

Advanced Applications



1 Smart Wall



Live data visualization

Operators gain valuable insights through real-time data visualization, which provides a comprehensive overview of key metrics and indicators.

Video carousels and scheduled playback

Operators check on overall situations as well as specific details without manually switching between multiple cameras, allowing for efficient and effective security and analysis.

Alarm notifications on the smart wall

When an alarm is triggered, it provides immediate notification to the operator through pop-up windows on the smart wall, and the corresponding video will automatically play.

2 Time & Attendance



Flexible settings

- Users can schedule attendance rules for fixed / flexible / multi-day shifts based on specific scenarios for offices, factories, stores, and more
- Seamless scheduling management by department, group, or individual, with easy ad-hoc adjustments

Convenient attendance options

Based on GEO fencing, on-site and mobile attendance get easy.

Efficient employee self-service

Employees can easily check their attendance results and send anomaly / corrective applications to HRs or managers. All these can be done conveniently on web & mobile app.

Easy integration with payroll systems

HikCentral Professional integrates widely with third-party software systems such as salary calculation systems, through Open API, database connectivity, and FTP.

Multi-dimensional preset reports and custom templates are available.

3 Parking Lot

Vehicle entrance & exit management

HikCentral Professional supports both self-service card or ticket dispensers and integrates with automatic number plate recognition (ANPR) cameras and touch-free, non-stop vehicle authentication to help reduce rush hour congestion.



Self-service parking assistance

Drivers can easily find their vehicles using the self-service query by entering their license plate numbers, which offers a shortest route for quick navigation. Guidance screens and displays are also available to assist in finding available parking spaces, aiming to make the process seamless and efficient.



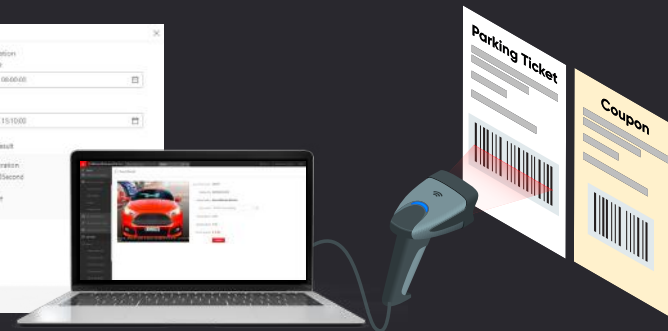
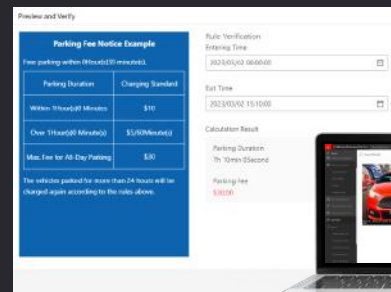
Advanced statistics and reports

HikCentral Professional enables intuitive and efficient analyses of parking operation and transaction reports. This facilitates in-depth analysis of operations, income, and expenses, assisting with informed decision-making.



Flexible parking fee calculation

HikCentral Professional offers versatile billing and scheduling options to cater to the diverse requirements of parking lots. This includes, the ability to charge yearly, monthly, or other scheduled time periods, as well as setting specific billing rules for different types of drivers. Moreover, the platform supports charging fees by scanning the parking tickets' barcodes or QR codes.

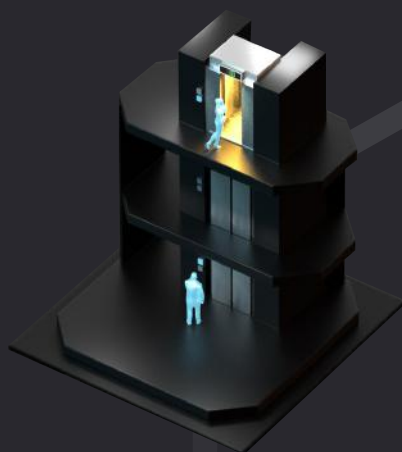


4 Visitor



Visitor management

- Use WhatsApp for convenient visitor pre-registration
- **Enhance visitor satisfaction** with ANPR vehicle number plate recognition, fast access using ID or face recognition, and self-service checkout at designated locations
- **Ensure secure guest visits**, control access to specific areas, and maintain a traceable visit record. Alerts are triggered if visitors fail to check out on time
- **Enable individual companies** in the same building to **independently manage their visitors**, ensuring visitor privacy and reducing the property management burden



Elevator control

- **Enhance the experience** for building residents and workers through efficient permission distribution and remote elevator control
- **Improve overall security** by effectively managing floor access permissions

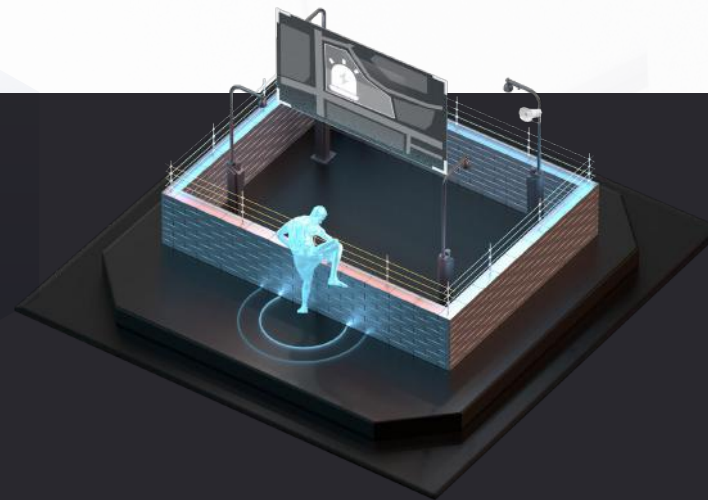


Video Intercom

- Serves as a **centralized platform** to manage the video intercom system
- **Increase delivery efficiency** through device configuration and rule-setting for device interaction
- **Improve property management** with call from the indoor or outdoor station to management staff
- **Enhance resident living experience** with batch notifications to indoor stations

5 Intrusion Detection

HikCentral Professional offers comprehensive alarm zone management with real-time monitoring. Instant alerts will be sent to users, helping identify abnormal activities such as intrusions, fire incidents, glass breakage in designated areas. In case of emergencies, one-click assistance through emergency alarm devices is available to enable quick response and effective dispatching.



Real-time zone monitoring

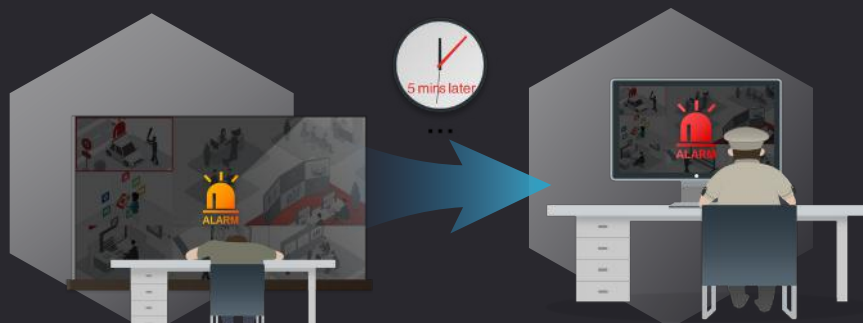
Get a centralized overview of subsystems and visualize the status of alarm zones. This provides continuous situational awareness and enhances overall security effectiveness.

Tailored deployment planning

Customize arming schedules for specific partitions (areas) to define preferred schedules and alarm linkage for alarm inputs within each partition.

Efficient emergency alarms

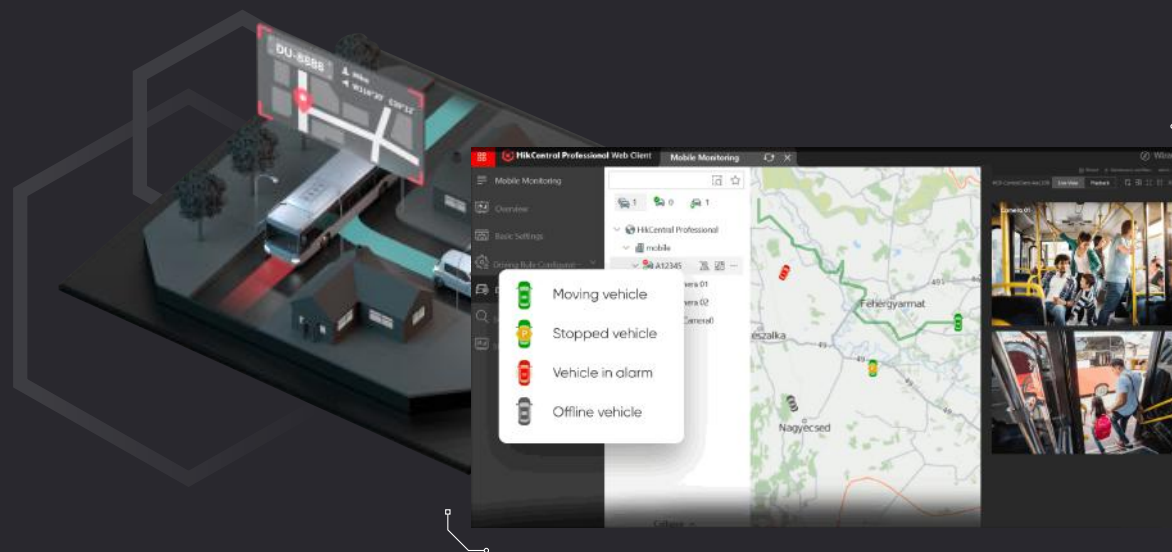
Access an integrated emergency call and intercom system directly within the platform, ensuring timely assistance and coordination.



6 On-Board Monitoring

Efficient on-board monitoring for quick response

HikCentral Professional can serve as a unified platform for mobile security management including real-time GPS positioning and tracking, remote checks on vehicle driving conditions, and more. Accurate detection and alarms enable quick response to abnormal driving events, ensuring the safety of both the driver and the vehicle.



Flexible and convenient video management solution

Users get flexibility with viewing the live feed, store and play back video clips from the mobile video recorders on vehicles from the command center, upload event videos under mobile network, and back up videos using Wi-Fi.

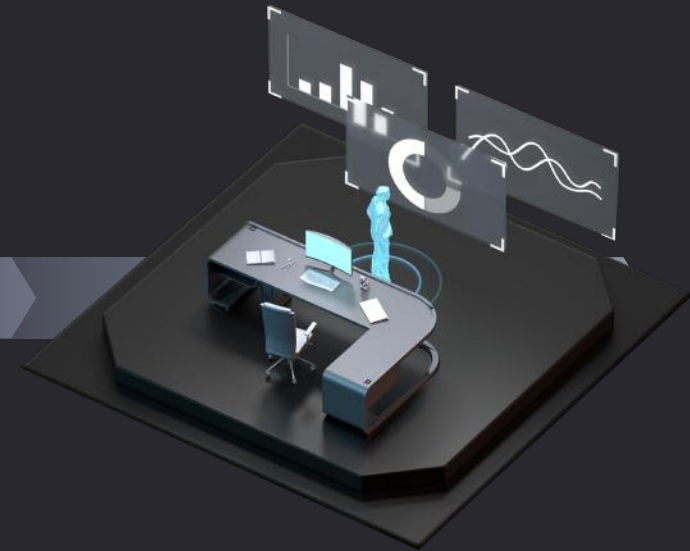


Customized reports for enhanced operational efficiency

With a diversity of report templates to choose from, users can effectively gain insights on vehicle driving conditions like distance, time, and much more, helping better schedule and optimize operations.

Multi-dimensional analysis reports, scheduled video backups, and evidence management are helpful for thorough problem investigation and documentation.

7 Intelligent Analysis



Single / Multiple
Store(s) Reports



Store comparison
reports



Store promotional
day report



- Gain a holistic understanding and **evaluate key metrics** such as walk-in rate, people counting, queue analysis, heat analysis, pathway analysis and more
- Ensure **accurate customer traffic data** by excluding staff and repeat customers, revealing the true "Customer Traffic In" and enabling conversion rate analysis
- Leverage **smart commercial analyses** with intuitive dashboards and diverse BI reports, including single / multiple store reports, store comparison reports, promotion day report, to help store managers evaluate operations and make data-driven decisions

8

Portable Enforcement



Streamlined law enforcement management

- Enable efficient communication with group intercom, SOS alarm and location tracking
- Use face recognition, fingerprint, card or/and password to quickly access devices

Unified and flexible file management

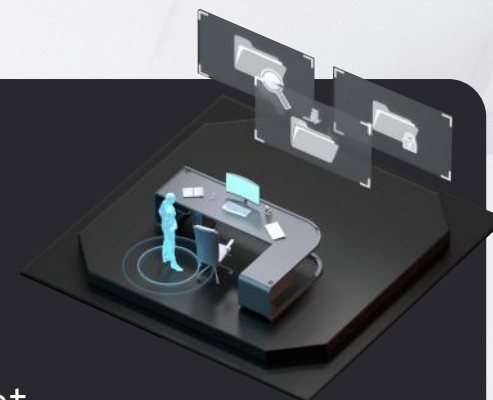
Quick retrieval of important recordings, long-term backups, and file-level permission management for regular users and supervisors

Easy setup and maintenance

- Rapidly distribute devices to persons in batches, standardize settings such as video resolution, pre-record duration, compulsory recording and evidence tag
- Offer detailed logs for personnel and equipment use

9

Evidence Management



File management

- Conveniently collect information using multi-clients (mobile, web, control clients) for file uploads, manage and store cross-service evidence files in long term
- Unified management of evidence files from various services, including videos, pictures, audios, and documents uploading in the daily operations
- Long-term backup and efficient retrieval: evidence classification, archiving, retrieval, export, internal and external sharing

Case management

- Users can add multiple associated files into one case, displaying basic information, case content, and operational records
- Manage evidence effectively with strict access permissions, edit videos, add watermarks, organize cases, and sort evidence with data security
- Easily retrieve and share evidence by classifying, searching by location, and facilitating internal and external sharing



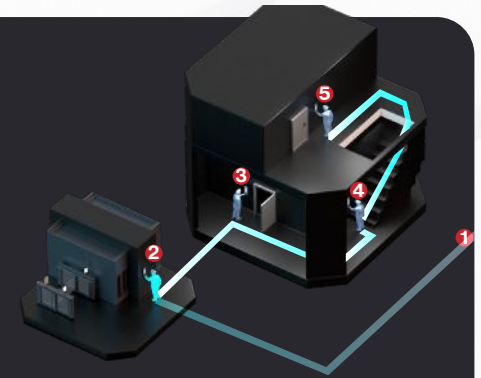
10 AR

- Provide a complete perception of **panorama and details in open spaces** such as industrial parks and construction sites, using the "Pic in Pic" mode for finger-based operations that simulate being on-site. Easily access key position cameras without losing the global view.
- **Locate key positions** on the AR Live Map with tags through simple "Click" and "Filter" buttons
- **3D Target tracking realized on AR augmented devices**. Design an efficient process for quick event handling with a closed loop from notification to acknowledgment
- Allow to add various labels to the display, including video, access control, alarms, entry/exit tags and more



11 Guard Patrol

Inefficient patrol schedule management and proxy patrolling can mean headaches for security managers. This solution aims to make guided patrols more convenient and efficient.



- **Design patrol schedules** and routes effortlessly using an intuitive e-map interface
- Security staff **check in using access control devices** via face recognition, fingerprints, or QR code with all data automatically uploaded to the software
- **Report anomalies during the patrol** to the center via a mobile app, with all patrolling data automatically uploaded and saved on HikCentral Professional
- **Alarms triggered instantly** if unauthorized individuals attempt to conduct patrol
- **Comprehensive patrol reports** enable managers to assess performance effectively
- Allows for **QR code patrols** in some places where wiring or device installation is not possible

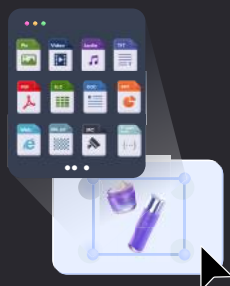


12 Commercial Display



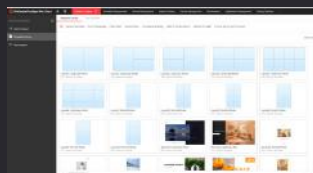
Rich content creation

Create vivid and attractive advertisements with over 10 content forms and various templates to choose from. The display of people counting programs enables better service to customers.



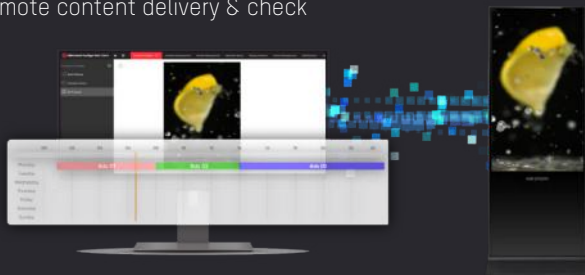
Quick design process

Choose from multiple pre-installed program templates with customizable layouts, and easily input desired content.

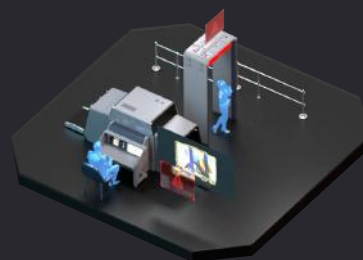


Remote management

- Access and manage devices remotely across multiple branches, eliminating the need for on-site control
- Enable remote content delivery & check



13 Security Inspection



Threats detection

- Identify a wide range of prohibited items timely and accurately, reducing labor costs and security threats
- Simplify centralized management with real-time detection results, alarm information, and live view

Under vehicle surveillance system (UVSS)

The under vehicle surveillance system accurately detects anomalies beneath vehicles, significantly reducing security risks. It utilizes a comparison function to provide precise scan results in a single, high-resolution photo with low distortion, ensuring a thorough inspection of vehicles passing through.



14 Emergency Mustering

Instant response to emergencies

When emergencies occur, HikCentral Professional can automatically or manually trigger to start the emergency state with just one click.

Enhanced evacuation experience

The system will trigger IP speakers for a cycled broadcast of evacuation messages and keep all doors open along the escape route, helping personnel quickly assemble at muster points.



Augmented security levels for everyone

At the muster points, the security staff can efficiently count and verify everyone's safety. If someone is missing, they can check the most recent locations where stranded personnel swiped ID cards.

15 Remote Site Management (RSM)

HikCentral Professional facilitates centralized monitoring, alarm processing and resource management across hundreds or thousands of sites.

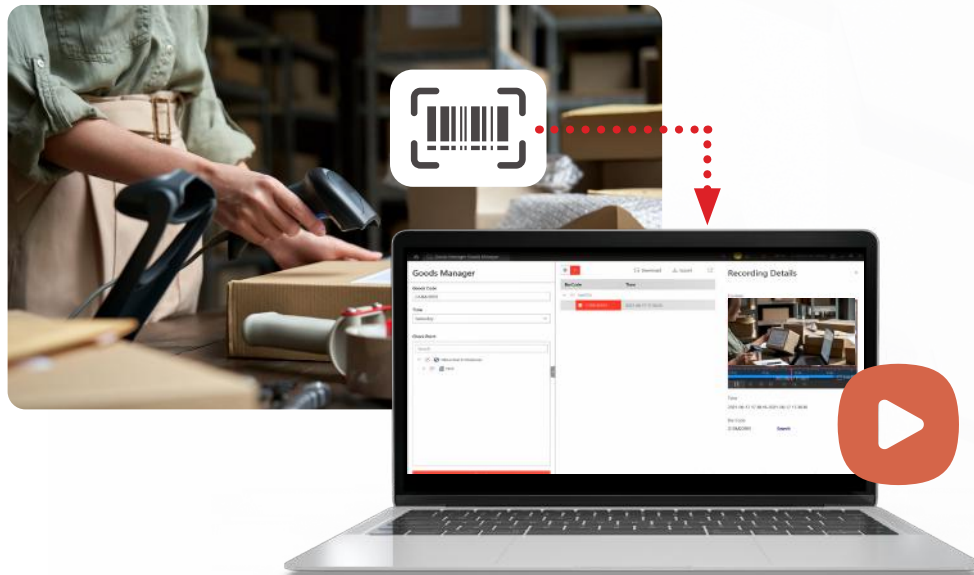
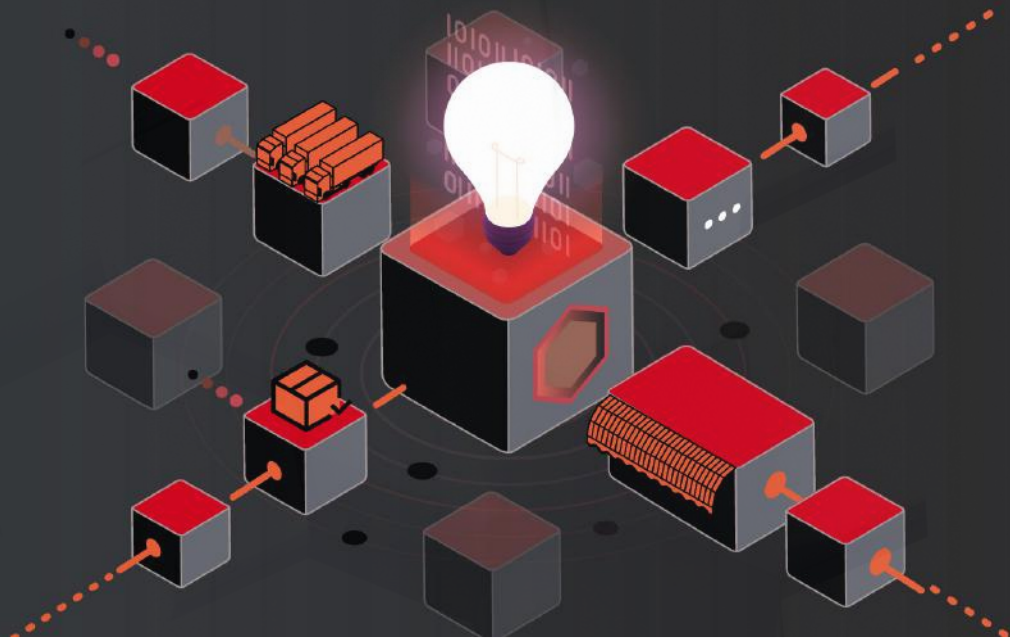
Centralized management of remote sites

- Manage multi-site resources, providing unified management of cameras, access control, alarms, ANPR recording and search, and support video walls
- Allow for flexible site-specific settings, independent from the central system

Top-level system capacity

Far exceed regular multi-site solutions in terms of the number of devices, remote sites and concurrent events, making it ideal for large-scale security projects

Innovative Industrial Applications



Parcel Tracking

Efficient and Accurate Parcel Management

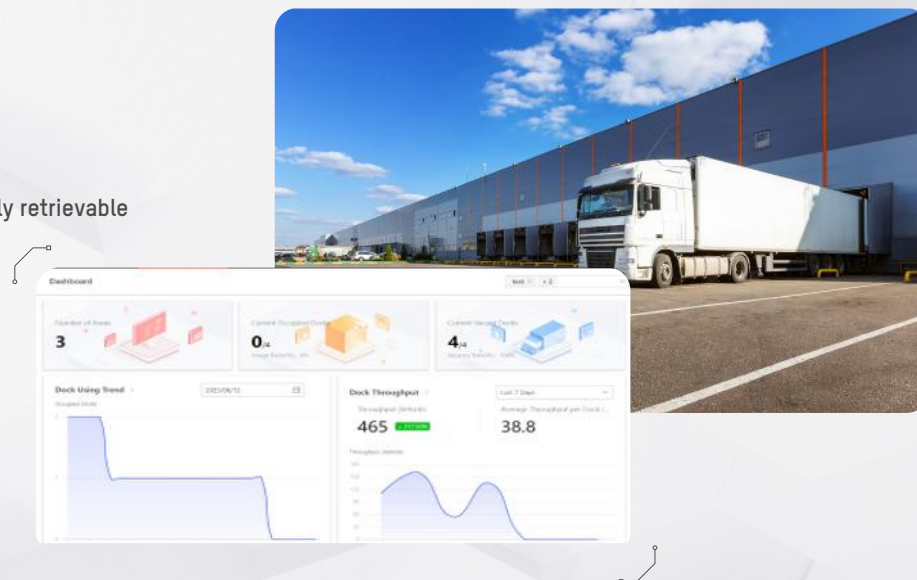
- Integrate barcode and video security systems for **complete parcel tracking** across different facilities
- Quickly resolve issues with **targeted parcel search** at checkpoints, ensuring no delays or lost items on conveyor belts
- Simplify identification and tracking using combined data from barcode scanners and cameras, with the ability to **export video and barcode data** for investigation purposes

Dock Management

Enhanced Dock Efficiency Tools

- Comprehensive video recording and search ensure all operations are **documented and easily retrievable**
- Real-time visualization of **dock status and insightful data** for decision-making:

- ✓ Monitor **dock utilization rates** with detailed statistics to optimize efficiency
- ✓ Analyze **dock throughput** to inform decisions on potential business expansion



Canteen Consumption

Advanced Canteen Operation Management

- Manage multiple canteens and merchants, adapting to various project scales with diverse billing methods and consumption patterns
- Customize consumption controls by defining specific times and locations suited to the unique schedules and locations of employees
- Streamline top-ups and subsidies with online management features for quick transactions and clear tracking
- Support additional consumption scenarios such as visitor and offline purchases
- Simplify daily operations with recording and multi-dimensional reporting for transparency and analysis in canteen operations



Intelligent Inspection

Streamlined and Efficient Inspection Processes

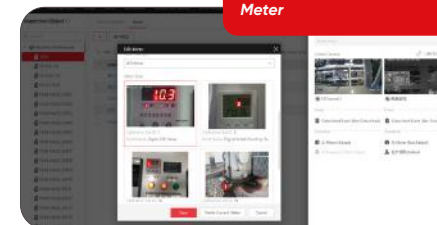
- Support for various inspection scenarios, such as power stations, manufacturing plants, and retail chains, catering to diverse industry needs
- Offer multiple inspection modes including scheduled inspections and quick inspections, to address different requirements effectively
- Ensure a comprehensive approach to the inspection lifecycle, from identifying problems and generating tasks to resolving issues, establishing a closed-loop system for continuous improvement in inspections



Energy & Utilities



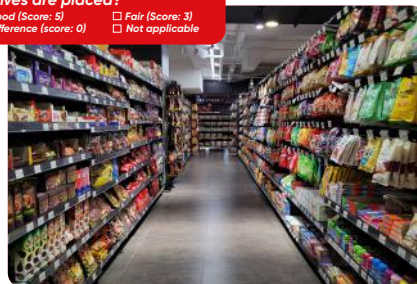
Trigger video verification with AI ability such as thermal AI Meter



Retail Store

How neatly the goods on the shelves are placed?

- ☐ Good (Score: 5) ☐ Fair (Score: 3)
☒ Difference (score: 0) ☐ Not applicable



Smart Education

Digital Teaching and Learning with Smart Management

- Manage essential education data, including information about teachers, students, classes, schedules, and semesters
- Enable video-based inspections of real-time and historical courses, providing insights into teachers' instructional methods, which helps improve teaching quality
- Track class attendance easily by dynamic calculation and using data from multiple sources
- Collect multi-dimensional data on campus to generate historical records, improving the efficiency and accuracy of retrieval



✓ Expected/Present

✓ Leave

✓ Absent

✓ Late



HikCentral Professional

Empower Your Future, Advanced and Growing



www.hikvision.com
support@hikvision.com

