



UNICORN
DenMart [®]
Behind The Best Indian Dentists

NSK Create it 

ENDODONTIC EQUIPMENT

Endodontics has never been so EASY...!!

ENDO-MATE DT WITH 20:1 HEAD

DESK TYPE ENDO MOTOR WITH TORQUE CONTROL AND AUTO REVERSE

- ✦ 6 head angles for ease of treatment
- ✦ Push type ultra-miniature head
- ✦ Speed range: 100-13,000 rpm (With 20:1, 4:1, 1:1, 16:1 geared heads)
- ✦ Torque level up to 7 Ncm (when using 20:1 handpiece)
- ✦ No. of program: 9
- ✦ Battery / AC operated
- ✦ Optional foot control



ENDO-MATE TC2

CORDLESS ENDODONTIC HANDPIECE WITH TORQUE CONTROL & AUTO REVERSE

- ✦ Cordless Endomotor with non-contact type charger
- ✦ Auto-reverse function
- ✦ Mini head and slim neck for better accessibility
- ✦ Alarm function alerts as per the pre-set torque value
- ✦ Max. Torque: 4 Ncm (when using 20:1 head)
- ✦ Speed range: 100-2,250 rpm (With 20:1, 16:1, 10:1, 4:1 gear heads)
- ✦ Charge/continuous use : 90 min/1.2h
- ✦ No. of program: 5



MICROMOTOR

FOR SAFER CROWN CUTTING



NLZ E

MORE EFFICIENT ENDODONTIC TREATMENT

The SMART Electric Brushless Micromotor

THE COMPACT MAKES A BIG CHANGE

- ✦ Torque adjustment in Endo Mode with reciprocation Function
- ✦ Auto-reverse function
- ✦ Flexible Installation Style with Superior Visibility & Operability
- ✦ NSK Safety Functions - 'Contra-Check & Contra-Safe



NLZ Endo (6:1) Reduction
Reciprocating handpiece with
more efficient Endodontic
treatment



NSK S-Max M95 / 95 L 1:5 Electric Hand piece system

- ✦ 1:5 increasing red ring handpiece
- ✦ Quattro water spray
- ✦ Clean head system for reduced cross-contamination
- ✦ Available in optic & non-optic model
- ✦ Max. speed : 2,00,000 RPM
- ✦ Push-button chuck
- ✦ The "Reciprocating Endo Mode" can be operated with the NLZ Endo Contra-Angle handpiece & WAVE-ONE File



NLX nano (Brushless Micromotor)

A new generation of brushless micromotor as well balanced as an air turbine

- ✦ Wider clinical applications - Surgical & General
- ✦ The micromotor is more than 25% shorter and 20% lighter
- ✦ Brushless Micromotor enhances the functionality with reduced heat generation, less noise and less vibration.
- ✦ Less Aerosol production
- ✦ 32,000 LUX LED illumination for natural daylight visibility
- ✦ Non-retraction valve to prevents cross contamination through water
- ✦ Compatible contra-angle 1:5 increasing gear handpiece (Red Ring)



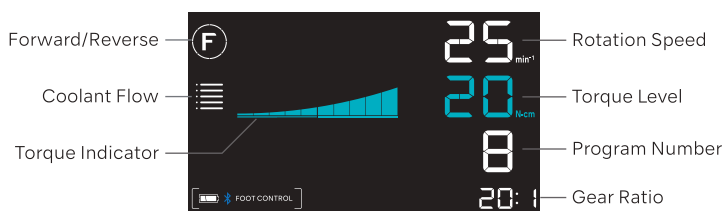
SURGICAL MICROMOTOR

Surgic AP2

Wireless Foot Control

The Ultimate fusion of precision and simplicity

Designed specifically for oral and implant surgery, Surgic AP2 delivers all the power and performance you will ever need for these procedures. 80N of torque, together with a wide speed-range of 200-40,000min⁻¹ offers the flexibility and fast response required for a variety of surgical procedures. The compact console is user-friendly, simple to operate and has been specifically designed for the aseptic theatre environment.



Superb visibility and operability large color LCD panel: Visibility is guaranteed with the large, back-lit, high-contrast, LCD panel. The display can be adjusted in 10 brightness levels. The display's intuitive and easy-to-understand icons allow for smooth operation.

- ✦ Wireless foot control (FC-84)
- ✦ Power supply: AC 230 V 50 / 60 Hz
- ✦ Max. Pump Output: 75 mL / min
- ✦ Programs: 08
- ✦ Dimensions: W 245 x D 235 x H 90 mm

A more compact yet powerful motor & minimized handpiece head reduce strain.



Surgic Pro2 Optic/Non-Optic

Go Beyond

Surgical micromotor system connecting you with the future.

The internationally acclaimed Surgic Pro surgical micromotor system has evolved into "Surgic Pro2". There are 3 progress points, in operation, safety and wireless extensibility.

- ✦ Wireless connection with multiple devices
- ✦ Easy clean flat LED touch panel screen display
- ✦ Multi-function wireless foot control: Coolant Solution Flow Volume Button, PRG(Program) Button, Forward/Reverse Button, Speed Control Pedal
- ✦ Programs: 8 Programs / Implant Systems
- ✦ Torque: 5-80 Ncm



HANDPIECES S-Max SG20M Surgical

Contra Angle 20:1 Reduction

NSK S-Max SG20M is a Non-optic handpiece comes with double sealing system to provide excellent durability & autoclavability. A more compact yet powerful motor and minimized handpiece head reduce strain.



- ✦ Unique Locking Mechanism
- ✦ Stress-less Body Shape
- ✦ Excellent Durability
- ✦ Gear Ratio : 20:1 Reduction
- ✦ Water Spray : External & Internal Cooling (Kirschner & Meyer)
- ✦ Body Material : Stainless Steel
- ✦ Max Speed : 2,000 min⁻¹
- ✦ Max Torque : 80 Ncm

DynaLED

Self Illuminating LED



Optic - NSK LED



Non Optic



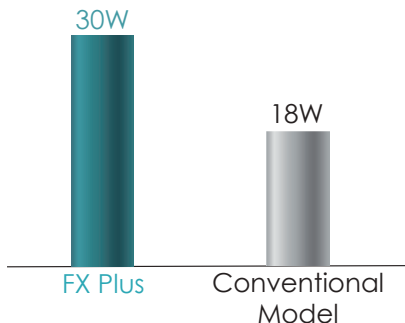
Standard Head

Miniature Head

- ✦ Connect to any standard air tubing coupling with any dental chair
- ✦ No need of a circuit board, tubings & bulbs
- ✦ High intensity & stable self LED illumination through the mini power generator
- ✦ Cellular glass optic - pure daylight quality illumination
- ✦ Stainless steel: durable, stable & lightweight
- ✦ Miniature Head M500LG (380,000 - 450,000 RPM) Head Size: ø10.6 x H12.4mm, 25,000 LUX
- ✦ Standard Head M600LG (330,000 - 430,000 RPM) Head Size: ø12.1 x H13.3mm, 25,000 LUX
- ✦ Clean head system
- ✦ Push-button chuck
- ✦ Quattro Spray

HANDPIECES FX PLUS with ARV

30 Watt- High Rotational accuracy for faster cutting



Anti-Retraction Valve (ARV)



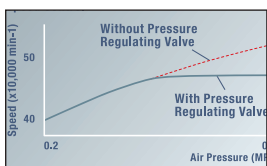
Prevents the reverse flow of debris into the handpiece thus avoiding cross-contamination.

60% Power Boost



60% Power Boost-FX Plus is dramatically more powerful with its newly designed scoop-type rotor than a normal handpiece.

Air Pressure Regulating Valve



For maintenance of a stable pressure supply to the rotor.

Quattro Spray



The NSK Quattro Water Spray effectively cools the entire operating field and prevents damage to living tissue.



Standard Head:

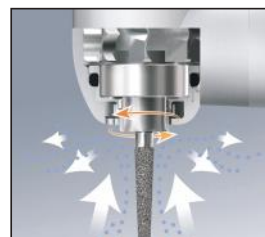
- ✦ Speed: 325,000-410,000 min⁻¹
- ✦ Head Size: ø 12.1 x H13.3mm
- ✦ Both standard and short shank burs are applicable



Miniature Head:

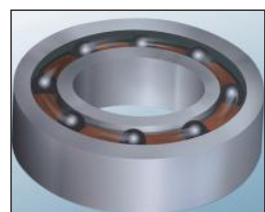
- ✦ Speed: 380,000-450,000 min⁻¹
- ✦ Head Size: ø 10.6 x H12.4mm
- ✦ Both standard and short shank burs are applicable

Clean Head System



Anti suck back mechanism to prevent cross-contamination.

Ceramic Bearings



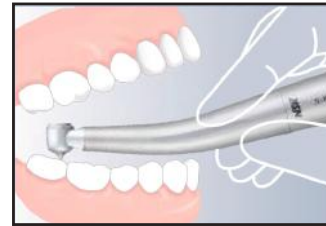
Ceramic Bearings-Ceramic Bearings are 25% harder than conventional steel bearings. Because of less friction, the heat production & vibration are significantly reduced which increases its efficiency & durability.

S-Max pico

The World's Smallest Head

The innovative air turbine with ultra mini head and super slim body shape

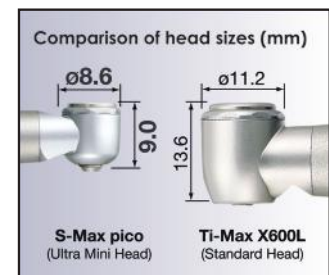
NSK has developed special ultra short shank burs to operate specifically with the pico handpiece.



Connect to NSK Couplings



- ✦ Stainless steel body
- ✦ Ceramic bearings
- ✦ Single spray
- ✦ Power 9 W
- ✦ Speed 360,000~450,000 RPM
- ✦ Push Button chuck



S-Max M

Incomparable Powerful Cutting and Superb Grip

The S-Max M series contra-angles have dramatically improved durability, and feature an updated internal body design and chuck mechanism. They are NSK's next-generation standard - a marriage of ergonomic sophistication and smooth cutting feel.

- ✦ Stainless Steel Body
- ✦ Cellular Glass Optics
- ✦ Clean Head System
- ✦ Push Button Chuck (Exclude M65)



M95L: 1:5 Increasing

- ✦ Quattro Spray
- ✦ For FG burs (Ø1.6)
- ✦ Ceramic Bearing
- ✦ Anti Heat System
- ✦ Max Speed: 200,000 min⁻¹



M25L: 1:1 Direct Drive

- ✦ Single Spray
- ✦ For CA burs (Ø2.35)
- ✦ Max Speed: 40,000 min⁻¹

Straight Handpiece



M65: 1:1 Direct Drive

- ✦ Single Spray
- ✦ For HP burs (Ø2.35)
- ✦ For CA burs (Ø2.35)*
- ✦ Max Speed: 40,000 min⁻¹

*Need to insert the supplied bur stopper



WHERE **TRUST** COMES **FIRST**



**Warranty Ke Saath Bhi
Warranty Ke Baad Bhi**

For any Sales & Support

 9821184441, 9599281852, 8448398852

 sales@unicornndenmart.com



SCAN TO VISIT OUR WEBSITE



Corporate Office: 3 Local Shopping Centre, MOR Land, Near J Block DDA Market,
New Rajender Nagar, New Delhi – 110060

    /unicornndenmart.com

* Accessories shown may not be a part of standard equipment. Specifications are subject to change without notice.

Ver 12/2024