



**25+Years
Of Partnership**

**Japanese Precision
Top-Quality Products**

**Unparalleled Service
& Technical Support**



The Samurai of *Prophylaxis*

Varios Combi Pro2

Trust | Credibility | Reliability of Japan

ULTRASONIC SCALER

Easy-eject water bottle for your ease and convenience, the water holder can be easily detached and reattached

Titanium slim scaler handpiece

Including our world-first ultrasonic scaler handpiece made from pure titanium. Our unique DURAGRIP finish provides excellent grip & stability during use, with the LED light providing great view ability.

Adjustable water volume

With our analogue dial, you have precise & intuitive control of water volume.



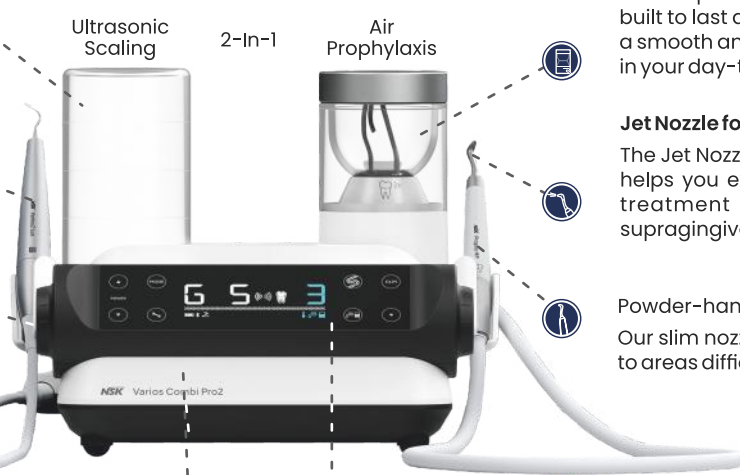
It corresponds to the ultrasonic scaler & powder functions..



Ultrasonic Scaling

2-In-1

Air Prophylaxis



POWDER THERAPY

Independent unit & chamber

Our powder unit is uniquely designed to be separate from the main unit. It is built to last and easy to maintain - for a smooth and uninterrupted workflow in your day-to-day clinical practice

Jet Nozzle for Perio Handpiece

The Jet Nozzle of the Perio Handpiece helps you execute precise, targeted treatment - whether gingival or supragingival.

Powder-handpiece, with slim nozzle
Our slim nozzle provides easy access to areas difficult to reach or see.

Water heating Both the ultrasonic scaler and the powder handpiece will inject heated water ensuring greater patient comfort.



Smart-display panel

Featuring our all-in-one smart-display panel, which only shows the consolidated keys relevant to the current procedure - allowing focussed treatment and effortless operation.

PURSUING

USABILITY

MIT

Minimally Invasive Therapy With the Varios Combi Pro2 you can deliver NSK' s Minimally Invasive Therapy (MIT) - helping you, the oral hygiene hero, to be your best version. Complete STEP 2, STEP 3, and STEP 5 of the MIT protocol, using its ultrasonic scaler and powder therapy, for supragingival and subgingival treatment.

NSK is committed to quality oral hygiene and creating intuitive, daily driver dental products.



The World's Most Trusted Handpieces

Now in India's one of the Most Trusted Hands

FX Series

Evolution of High Speed Air Turbine
and Low Speed Handpieces

FX-series offers much more endurance and power than previous models, while being just a easy to handle. Its sleek design provides maximum visibility of the operating field, easily reaching all areas of the oral cavity.



PanaAir FX (Push Button)

The **NSK Pana Air PAF-SU B2** is a precision-engineered, high-speed air turbine handpiece designed for dentists who demand performance, reliability, and patient comfort. With a powerful 20-watt motor and ergonomic design, this handpiece ensures smooth, fast, and precise dental procedures across a range of clinical environments. Whether you're handling routine cleanings or complex restorative work, the PAF-SU B2 delivers unmatched efficiency and control in your practice.

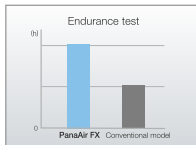


Model: PAF-SU B2

High-Speed Air Turbine Handpiece



Push Button
Chuck



Exceptional
Longevity



30% Power Boost

- ▲ Stainless Steel Body
- ▲ Ceramic Bearing
- ▲ Clean Head System
- ▲ Rotation Speed: 350,000-450,000 min⁻¹
- ▲ Push Button type, Non-Optic, 2 hole
- ▲ Standard Head: Power 20 watts
- ▲ Air Pressure Regulating Valve
- ▲ Compatible Bur Size: ISO 1797-1 Ø1.59 – 1.60 mm
- ▲ Max Bur Length: 21 mm
- ▲ Drive Air Pressure; 0.20 – 0.25 MPa (2.0 – 2.5 kgf/cm²)
- ▲ Water Pressure: 0.05 – 0.20 MPa (0.5 – 2.0 kgf/cm²)
- ▲ Autoclave upto 135°C
- ▲ Thermo disinfectable: Yes

PanaAir FX (Wrench Type)

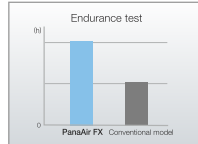
The **NSK Pana Air PAF-S B2** sets a new benchmark in dental turbine performance with its 30% power boost, slim stainless-steel body, and enhanced durability. Engineered with advanced air turbine simulation technology and a robust stainless-steel construction, it delivers consistent torque, smoother control, and precise results—making it a trusted tool in high-demand dental clinics across the globe. With features like an air pressure regulating valve and easy-to-change cartridges, the PAF-S B2 is not just powerful—it's purpose-built for modern clinical workflows.



Model PAF-S B2 High-Speed Air Turbine Handpiece



Wrench Type



Exceptional Longevity



17
Watts



30% Power Boost

- ▲ Stainless Steel Body
- ▲ Ceramic Bearings
- ▲ Clean Head System
- ▲ Air Pressure Regulating Valve
- ▲ Rotation Speed: 350,000 – 450,000 min⁻¹
- ▲ Standard Head Power: 17 watts, 2 Hole
- ▲ Wrench Type Chuck
- ▲ Chucking Length: 10.2 mm
- ▲ Compatible Bur Size: ISO 1797-1 Ø1.59 – 1.60 mm
- ▲ Max Bur Length: 21 mm
- ▲ Drive Air Pressure; 0.20 – 0.25 MPa (2.0 – 2.5 kgf/cm²)
- ▲ Water Pressure: 0.05 – 0.20 MPa (0.5 – 2.0 kgf/cm²)
- ▲ Autoclave Sterilization: Up to 135°C
- ▲ Thermo disinfectable: Yes

FX series

A new legend begins

External Water Spray Non-Optic

General Applications Handpiece

Model: FX22 1:1



- ▲ **1:1 Reduction**
- ▲ For CA burs ($\varnothing 2.35$)
- ▲ Latch type
- ▲ Max Speed : 30,000 min⁻¹

Model: Fx25 1:1



- ▲ **1:1 Direct Drive**
- ▲ For CA burs ($\varnothing 2.35$)
- ▲ Push Button Chuck
- ▲ Clean Head System
- ▲ Ball Bearing
- ▲ Max Speed : 40,000 min⁻¹



Model: FX65 1:1

Straight Handpiece



- ▲ **1:1 Direct Drive**
- ▲ For HP burs ($\varnothing 2.35$)
- ▲ Clean Head System
- ▲ Max Speed : 40,000 min⁻¹

FX Plus (With ARV)

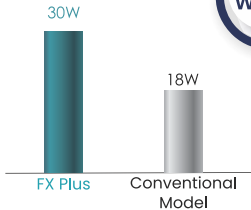
Powerful all the way



Mini Head



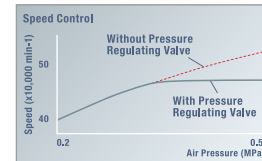
Standard Head



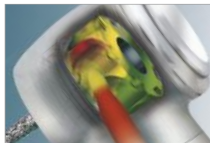
30 Watt- High cutting power



Quattro Spray
Enhanced cooling effect



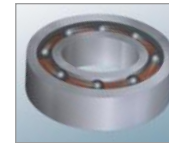
Air Pressure Regulating Valve:
Maintain stable supply of pressure



60% Power Boost:
Ensure fast & Precise Treatment



Clean Head System
Prevents cross contamination



Ceramic Bearings
Less heat generation & smooth functioning

▲ Stainless Steel Body ▲ Ceramic Bearing ▲ Clean Head System ▲ Push Button Chuck ▲ Quattro Spray ▲ Simple Cartridge Change

▲ Miniature Head: Speed: 380,000–450,000 min⁻¹ ▲ Head Size: Ø10.6 × H12.4 mm ▲ Both standard and short shank burs are applicable

▲ Standard Head: Speed: 325,000–410,000 min⁻¹ ▲ Head Size: Ø12.1 × H13.3 mm

DynaLED

Self Illuminating LED

UPGRADE
TO OPTIC

LED

Standard MODEL M600 LG B2



LED

Miniature MODEL M500 LG B2



- ▲ NSK DynaLED turbine handpieces utilize NSK's micro precision engineering for high performance and long-term reliability.
- ▲ These innovative turbines feature a dynamic integrated mini power generator.
- ▲ The generator delivers long-lasting, daylight-quality LED illumination.
- ▲ Compatible with any standard non-optic air tubing — no wiring changes required.
- ▲ Clinicians can instantly gain LED illumination benefits on existing or new dental equipment.
- ▲ Offers cost-effective LED integration — simply by upgrading the turbine.
- ▲ Constructed with stainless steel for durability, stability, and extended functional life.
- ▲ NSK long-life micro power generator ensures high efficiency and long-term durability.
- ▲ Incorporates latest technologies and advanced materials for sustained performance and reliability.
- ▲ The micro power generator is electronically optimized to deliver precise power for bright, effective LED illumination.
- ▲ The handpiece performance remains unaffected by the integrated micro power generator.

S-Max M

Incomparable Powerful Cutting
and Superb Grip



Straight Handpiece



- ▲ Stainless Steel Body
- ▲ Cellular Glass Optics
- ▲ Clean Head System
- ▲ Push Button Chuck (Exclude M65)

Optic MODEL M95L

Non-Optic MODEL M95

1:5 Increasing ▲ Quattro Spray ▲ For FG burs ($\varnothing 1.6$)

▲ Ceramic Bearings ▲ Anti Heat System

▲ Max Speed: 200,000 min^{-1}

Optic MODEL M25L

Non-Optic MODEL M25

1:1 Direct Drive ▲ Single Spray ▲ For CA burs ($\varnothing 2.35$)

▲ Max Speed: 40,000 min^{-1}

Non-Optic MODEL M65

1:1 Direct Drive ▲ Single Spray ▲ For HP burs ($\varnothing 2.35$)

▲ For CA burs ($\varnothing 2.35$)* ▲ Max Speed: 40,000 min^{-1}

*Need to insert the supplied bur stopper

NLZ E Complete Set **Optic**

THE NEW STYLE ELECTRIC

THE NEW STYLE ELECTRIC

THE COMPACT MAKES A BIG CHANGE



- ▲ MODEL **NLZ E S230**
- ▲ Contents
- ▲ NLZ E U (Control Unit & Main Unit)
- ▲ NE180 (AC adaptor)
- ▲ NLZ (Motor)
- ▲ NLZ CD (Motor Cord)
- ▲ NLZ U BRACKET

NLZ Endo

Endodontic Handpiece

6:1 Reduction



Non-Optic MODEL **NLZ Endo**

- ▲ Max Speed: 1,000 min⁻¹ (Input Max Rotation Speed of the Motor: 6,000 min⁻¹)
- ▲ Engine Files (Ø2.35) *For Rotary Endo Mode
- ▲ Wave-One Reciprocating Files (Ø2.35) *For Recipro Endo Mode
- ▲ Head Size: Ø8.6 × H 11.3 mm
- ▲ Push Button Chuck

NLX nano **LED** **Optic** Internal Water Spray **BRUSHLESS**

A New Generation of Micromotor as Well Balanced as an Air Turbine

UPGRADE TO ELECTRIC MICROMOTOR



- ▲ MODEL **NLX nano S230 (230V)**
- ▲ Contents
- ▲ NLX nano U (Control Unit)
- ▲ NLX nano (Motor)
- ▲ NLX CD (Cord)
- ▲ NLAC (AC Adaptor) 230V
- ▲ Specifications (Control Unit)
- ▲ Rated Input: AC 28 V 50/60 Hz
- ▲ Weight: 517 g
- ▲ Dimensions: W127 × D149 × H 54 mm

ENDO-MATE DT

Endo Micromotor with Torque Control And Auto Reverse

**LEGENDARY
ENDO MOTOR**

ENDO-MATE TC2

Smarter and Safer

**CORDLESS
ENDO MOTOR**



ENDO-MATE DT Complete Sets
ENDO-MATE DT
with 20:1 Head
MODEL ENDO-MATE DT (230V)

ENDO-MATE DT
Complete MPAS Set
MODEL ENDO-MATE DT
MPAS Set (230V)



ENDO-MATE TC2 Complete Sets
MODEL ENDO-MATE TC2
(230V)

ENDO-MATE TC2
Complete MPAS Set
MODEL ENDO-MATE TC2 MPAS
(230V)



iPexII

Advanced Apex Locator

**RELIABLE
BEST SELLER**

Monitoring the canal depth
iPexII Complete Set



MPAS Head:

Connection for Apex locator (for short shank),
Miniature Head, for Ni-Ti files ($\varnothing 2.35$), Push
Button Chuck

Surgic Pro2

Optic Go beyond.

**MOST STYLISH
IMPLANT MOTOR**



Wireless
Foot Control



Ti-Max X-SG20L
Handpiece

Surgical micromotor system connecting you with the future.

- ▲ Features three key upgrades: enhanced operation, safety, and wireless extensibility.
- ▲ Delivers improved performance, greater adaptability, and seamless connectivity with external devices.
- ▲ Maximum Torque: 80 Ncm
- ▲ Speed Range: 200 – 40,000 min⁻¹ (RPM)
- ▲ **Surgic Pro2 Complete Set with X-SG20L Handpiece**
- ▲ Control Unit
- ▲ SGL80M Optic Micromotor
- ▲ X-SG20L Optic Handpiece (20:1 Reduction)
- ▲ Foot Control Wireless
- ▲ Irrigation tube (Pack of 3) and other accessories

Surgic AP2

Non-Optic

**NEWLY LAUNCHED
IMPLANT MOTOR**



Wireless
Foot Control



S-Max SG20M
Handpiece

The ultimate fusion of precision and simplicity

- ▲ Designed for: Oral and implant surgery procedures
- ▲ Maximum Torque: 80 Ncm
- ▲ Speed Range: 200 – 40,000 min⁻¹ (RPM)
- ▲ Motor Type: Surgical micromotor (high-performance, precise control)
- ▲ Console Design: Compact, user-friendly & easy to operate
- ▲ Usability: Suitable for a variety of surgical applications requiring flexibility and fast response
- ▲ Environment Compatibility: Specifically designed for aseptic theatre use
- ▲ Performance Focus: Delivers consistent power and precision during surgical procedures.



WHERE TRUST COMES FIRST



Warranty Ke Saath Bhi Warranty Ke Baad Bhi

For any Sales & Support


 95992-81852, 84483-98852  sales@unicorndenmart.com



SERVICE HELPLINE

Register Your Complaint With

Missed Call at **70655-58558**

011-45551250, 51, 55  95994-48518, 97170-12081
care@unicorndenmart.com, care1@unicorndenmart.com

Connect With



Unicorn DenMart

By Online: www.bestdentaldeals.in



Corp. Office: 3 Local Shopping Centre, MOR Land, Near J Block DDA Market,
New Rajender Nagar, New Delhi – 110060



/unicorndenmart.com

Accessories shown may not be a part of standard equipment.
Specifications are subject to change without notice.