



Surgic Pro2

Go beyond.



UNICORN IS THE AUTHORISED DISTRIBUTOR FOR
COMPLETE RANGE OF GENUINE NSK PRODUCTS



UNICORN
DenMart
Behind The Best Indian Dentists

NSK
Create it

DynaLED

Self Illuminating LED

**UPGRADE
TO OPTIC**

NSK DynaLED turbine handpieces take advantage of NSK micro precision engineering, resulting in high performance and long term reliability. These innovative turbines include a dynamic integrated mini power generator which delivers long life and daylight quality LED illumination when connected to any standard non optic air tubing. Clinicians can instantly gain the advantage of LED illumination on their existing or new dental equipment, simply for the cost of the turbine. NSK has chosen stainless steel for DynaLED turbines to give high priority for durable, stable and long term function.

NSK long life micro power generator high efficiency and long term durability

- NSK has applied the very latest technologies and materials to achieve long term efficiency and reliability.
- Micro power generator is electronically calculated to produce the correct power source for highly effective LED illumination.
- The performance of the handpiece is not influenced by the micro power generator.

LED



Standard MODEL **M600LG B2** ORDER CODE **P1106**



|| Borden 2 hole

LED



Miniature MODEL **M500LG B2** ORDER CODE **P1107**



|| Borden 2 hole

FX Plus

Powerful all the way

- Stainless Steel Body • Ceramic Bearing • Clean Head System • Push Button Chuck • Quattro Spray • Simple Cartridge Change

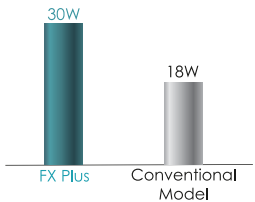


Miniature Model FXP-MU QD ORDER CODE PA2304 Power: 23W

Miniature Head: Speed: 380,000-450,000 min⁻¹, Head Size: Ø10.6 X H12.4mm • Both standard and short shank burs are applicable

Standard Model FXP-SU QD ORDER CODE PA2305 Power: 26W

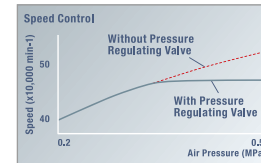
Standard Head: Speed: 325,000-410,000 min⁻¹, Head Size: Ø12.1 X H13.3 mm



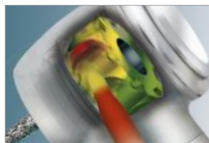
30 Watt - High Rotational accuracy



Quattro Spray
Enhanced cooling effect



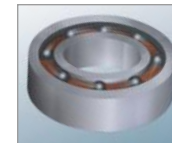
Air Pressure Regulating Valve: Maintain stable supply of pressure



60% Power Boost:
Ensure fast & Precise Treatment



Clean Head System
Prevents cross contamination



Ceramic Bearings
Less heat generation & smooth functioning

NLZ E Complete Set **Optic**

THE NEW STYLE ELECTRIC

THE COMPACT MAKES A BIG CHANGE



**THE NEW
STYLE ELECTRIC**

MODEL **NLZ E S230**
ORDER CODE **Y1004004**

Contents

- NLZ E U (Control Unit & Main Unit)
- NE180 (AC adaptor)
- NLZ (Motor)
- NLZ CD (Motor Cord)
- NLZ U BRACKET

NLZ Endo

Endodontic Handpiece

6:1 Reduction



Non-Optic MODEL **NLZ Endo** ORDER CODE **C1130**

- Max Speed : 1,000 min⁻¹ (Input Max Rotation Speed of the Motor : 6,000 min⁻¹)
 - Engine Files (ø2.35) *For Rotary Endo Mode
- Wave-One Reciprocating Files (ø2.35) *For Recipro Endo Mode
 - Head Size : ø8.6 x H 11.3 mm
 - Push Button Chuck

NLX nano

LED

Optic

Internal Water Spray

BRUSHLESS

A New Generation of Micromotor as Well Balanced as an Air Turbine



**UPGRADE TO
ELECTRIC MICROMOTOR**

MODEL **NLX nano S230 (230V)**

ORDER CODE **Y1001362**

Contents

- NLX nano U (Control Unit)
- NLX nano (Motor)
- NLX CD (Cord)
- NLAC (AC Adaptor) 230V

Specifications (Control Unit)

- Rated Input : AC 28 V 50/60 Hz
- Dimensions : W 127 x D 149 x H 54 mm
- Weight : 517 g

S-Max M

Incomparable Powerful Cutting
and Superb Grip



Straight Handpiece



- Stainless Steel Body • Cellular Glass Optics
- Clean Head System • Push Button Chuck (Exclude M65)

Optic MODEL **M95L** ORDER CODE **C1023**

Non-Optic MODEL **M95** ORDER CODE **C1026**

- 1:5 Increasing** • Quattro Spray • For FG burs (ø1.6)
• Ceramic Bearings • Anti Heat System
• Max Speed : 200,000 min⁻¹

Optic MODEL **M25L** ORDER CODE **C1024**

Non-Optic MODEL **M25** ORDER CODE **C1027**

- 1:1 Direct Drive** • Single Spray • For CA burs (ø2.35)
• Max Speed : 40,000 min⁻¹

Non-Optic MODEL **M65** ORDER CODE **H1008**

- 1:1 Direct Drive** • Single Spray • For HP burs (ø2.35)
• For CA burs (ø2.35)* Max Speed : 40,000 min⁻¹
* Need to insert the supplied bur stopper

ENDO-MATE DT

Endo Micromotor with Torque Control And Auto Reverse

**LEGENDARY
ENDO MOTOR**



ENDO-MATE DT Complete Sets

**ENDO-MATE DT
with 20:1 Head**
MODEL ENDO-MATE DT (230V)
ORDER CODE Y141121

**ENDO-MATE DT
Complete MPAS Set**
MODEL ENDO-MATE DT
MPAS Set (230V)
ORDER CODE Y1001161

ENDO-MATE TC2

Smarter and Safer

**CORDLESS
ENDO MOTOR**



ENDO-MATE TC2 Complete Sets

**ENDO-MATE TC2
Complete Set**
MODEL ENDO-MATE TC2 (230V)
ORDER CODE Y1001027

**ENDO-MATE TC2
Complete MPAS Set**
MODEL ENDO-MATE TC2 MPAS
(230V)
ORDER CODE Y1001047

**RELIABLE
BEST SELLER**

iPexII

Advanced Apex Locator

iPexII Complete Set

MODEL iPexII Complete Set
ORDER CODE Y1002208



Monitoring the canal depth

For integration into Endodontic instruments (ENDO-MATE TC2 / ENDO-MATE DT / Contra-angle) The NSK endodontics products and iPexII ensure safe, precise and efficient root canal procedures.



Surgic Pro2

Go beyond.

MOST STYLISH IMPLANT MOTOR



OPERABILITY

SAFETY

WIRELESS
EXTENSIBILITY

Surgic AP2

Wireless Foot Control

NEWLY LAUNCHED IMPLANT MOTOR



Surgical micromotor system connecting you with the future.

The internationally acclaimed Surgic Pro surgical micromotor system has evolved into "Surgic Pro2". There are 3 progress points, in operation, safety and wireless extensibility.

As well as further improving the basic performance of Surgic Pro, its supreme adaptability in connecting to various external devices offers improved safety, efficiency and operator comfort during treatment.

Professionals depend on the reliability of their equipment on a daily basis. With Surgic Pro2 NSK have taken reliability to the next level.

Optic Surgic Pro2 Complete Set with X-SG20L Handpiece

MODEL Surgic Pro2 OPT ORDER CODE Y1004195

Non-Optic Surgic Pro2 Complete Set with S-Max SG20 Handpiece

MODEL Surgic Pro2 NON-OPT ORDER CODE Y1004196

The ultimate fusion of precision and simplicity.

Designed specifically for oral and implant surgery, Surgic AP2 delivers all the power and performance you will ever need for these procedures. 80N of torque, together with a wide speed-range of 200-40,000min⁻¹ offers the flexibility and fast response required for a variety of surgical procedures. The compact console is user-friendly, simple to operate, and has been specifically designed for the aseptic theatre environment.

Surgic AP2 Non-Optic Complete Set with S-Max SG20M Handpiece

MODEL Surgic AP2 (230V) ORDER CODE Y1500766

Surgic Pro

Optic / Non-Optic



- Up to 80 Ncm powerful torque
- Illuminated display for greater visibility
- Flexible speed control between 200 ~ 40,000 RPM
- Optic / Non-Optic Brushless micromotor
- Hands-free operation via multifunctional foot control unit
- Powered with advanced handpiece calibration
- 8 x 8 Implant programs
- Light power: Over 32,000 LUX (LED Micromotor)
- Max. output / Max. Torque: 210 W / 80 Ncm
- Max. pump output: 75 mL/ min
- Dimensions: W265 x D220 x H100 (mm)
- With SG20 handpiece (Non-Optic)
- X-SG20L handpiece (Optic)

Surgic Pro⁺

- Data Accessibility - Treatment data can be accessed & downloaded using a USB memory stick. (USB memory stick is optional)
- Data storage facility - Can record the date, speed, rotational direction, torque, gear ratio & coolant solution flow volume
- With X-DSG20L dismantlable Handpiece (Optic)
- Control panel with hand piece light Intensity variation control (Off / Medium / High)
- Built in memory: 100 min

500ml Oil Spray **Hi-Clean Recommended by NSK**

FREE With purchase of any
NSK Handpiece & Equipments

- ✓ ALL HANDPIECES COVER ONE YEAR WARRANTY
- ✓ INSIST ON FREE OIL SPRAY FOR EVERY HANDPIECE



Upgrade to
Premium Oil Spray
to keep your NSK
products hygiene
and disinfected

Offer valid till 31st Jan24



3 Local Shopping Centre, MOR Land, Near J Block, DDA Market, New Rajender Nagar, New Delhi – 110060

☎ 9821184441, 9599281852, 8448398852 ✉ sales@unicorndenmart.com

🌐 www.unicorndenmart.com 📱 /unicorndenmart



SCAN TO VISIT OUR WEBSITE