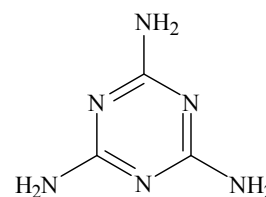
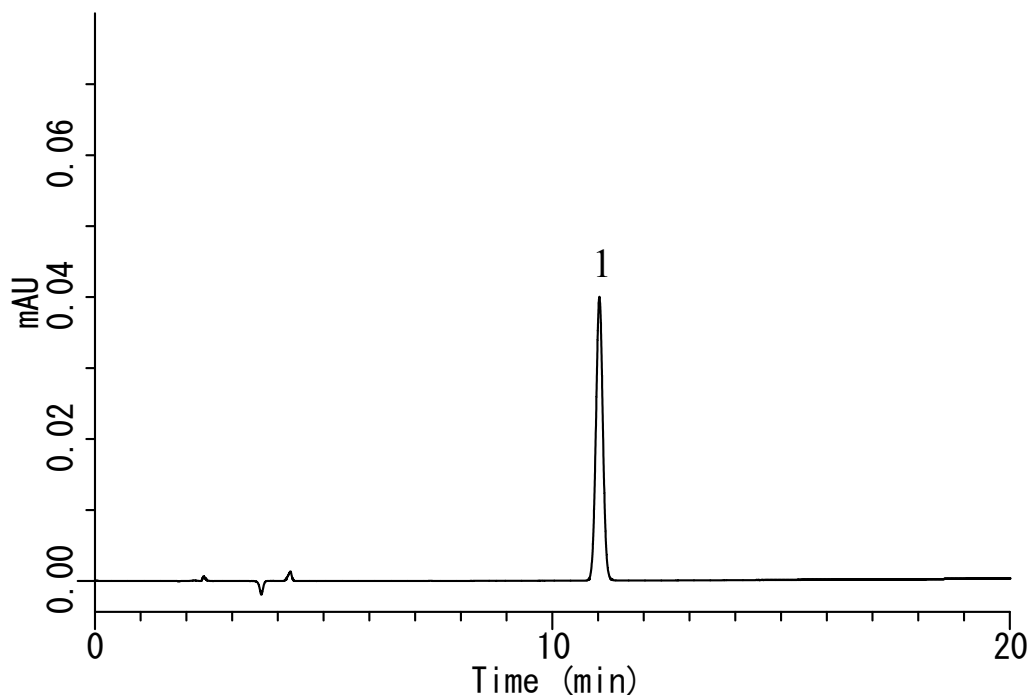


InertSearch™ for LC

Inertsil® Applications

Analysis of Melamine

Data No. LA598-0848



1. Melamine

Structures are created using Chemistry 4-D Draw which is provided by ChemInnovation Software, Inc.

Conditions

System : GL-7400 HPLC system
Column : Inertsil ODS-SP (5 µm, 250 x 4.6 mm I.D.)
Column Cat. No. : 5020-02746
Eluent : A) CH₃CN
B) 10 mM KH₂PO₄, 10 mM IPCC-08 (pH 3.0, H₃PO₄)
(IPCC-08: Sodium 1-Octanesulfonate)
A/B = 15/85, v/v
Flow Rate : 1.0 mL/min
Col. Temp. : 40 °C
Detection : UV 240 nm (GL-7450 UV Detector)
Injection Vol. : 10 µL
Sample : Melamine

Analyte:

1. Melamine 20 mg/L