



# m CELLAR MAISON

Bespoke Wine Cellars

Ultimate Buyers Guide

---

Wine Storage Solutions





# Wine Storage Solutions.

Integral to your wine cellar design planning, is understanding your options both in terms of cellar type, design, layout and price.

Here is an easy to follow guide to help you to find the best solution that suits your home, lifestyle and budget.



# Key Considerations For Wine Cellar Design.

## Location.

The placement of a wine room or wall is crucial for preservation. Ideally, wine should be stored at 12-15°C, with 65% humidity in a cool, UV-protected space—basements are often ideal. However, modern cooling, insulation, and UV filters allow for more flexibility, both above and below ground. Consider proximity to kitchens or entertainment areas for seamless integration.

We offer free, no-obligation advice at the planning stage.

## User Preferences.

Whether for personal use or a client, the wine cellar should reflect the owner's lifestyle and collection goals. Are you/your client an entertainer or a serious collector? Does it make sense to store the full collection at home or keep some in a bonded warehouse for investment?

## Cellar Type & Design.

Available space, desired bottle capacity, and display preferences shape the design. Should the cellar be a statement feature in a dining area or a hidden retreat for private enjoyment? Is maximising capacity or aesthetics the priority? Contact us for a free checklist to guide your planning.

## Technical Support.

Cellar Maison provides technical specifications and first-fix support for architects, designers, and homeowners. Our team ensures seamless integration of wine cellars within any space.

Avoid common pitfalls—contact us today for a free one-to-one consultation!



# Bespoke Storage Solutions

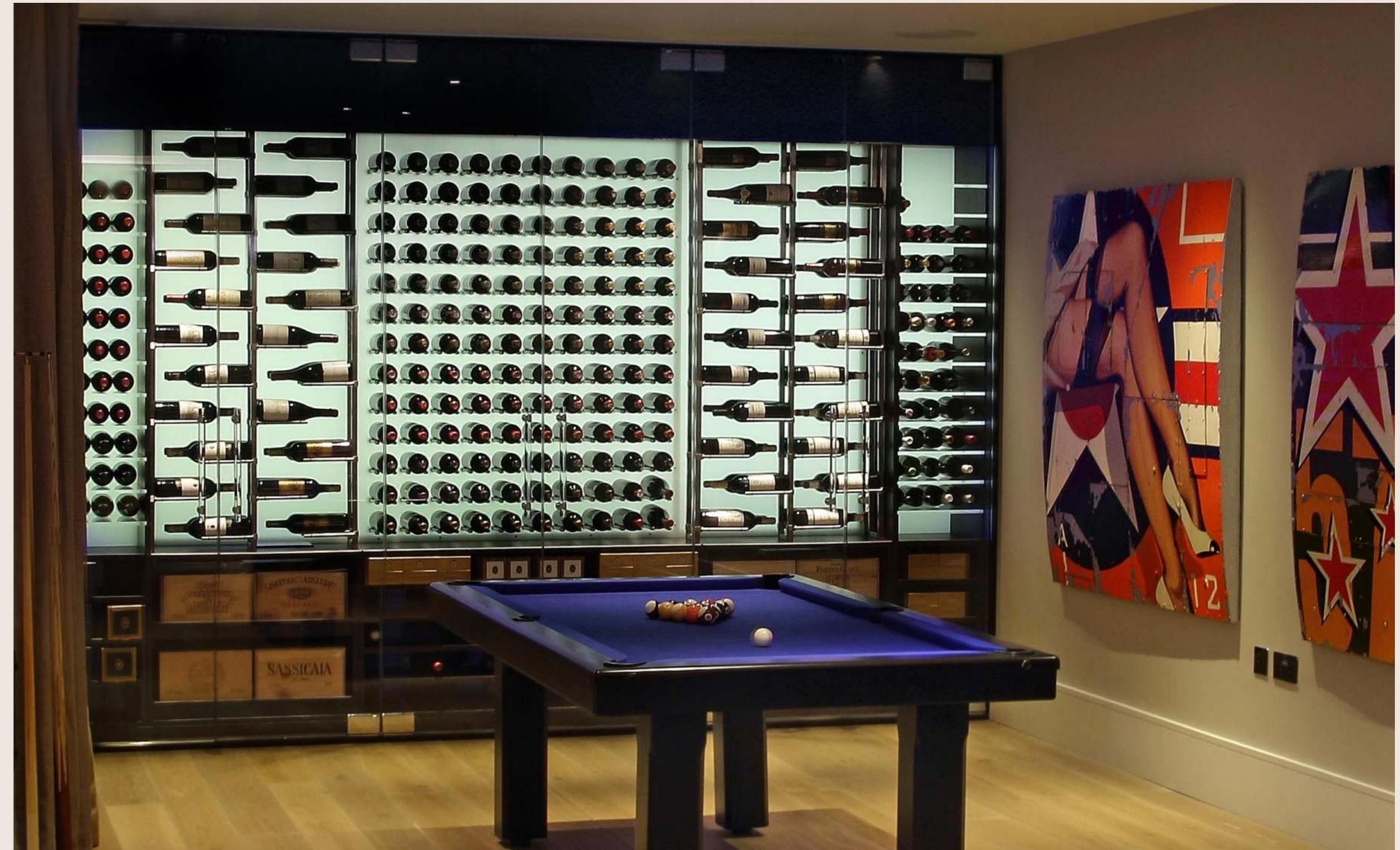


## Wine Rooms

---

Walk in space with wine racks installed within, generally climate controlled. Fantastic for an authentic and immersive experience.

- Minimum size of about 6 square metres.
- Suits larger or growing collections.
- Can contain wine tasting area or other features



## Wine Walls

---

Save space and showcase your collection, with a cellar conditioned wall or cabinet of wine, beautifully displayed behind glass doors.

- Depth ranges between 50cm-90cm.
- Width 120cm(1.2m) - 1000cm(10m).
- Ideal for entertaining spaces.



# Design Options Compared

## Wine Rooms

### PROS

- More economical than wine walls generally
- Easier access to entire collection
- More immersive/authentic cellar experience
- Maximise bottle storage

### CONS

- Requires more space, i.e. a dedicated room
- More room preparation such as thermal insulation
- May be further away from entertaining space
- May need to consider a seperate ambient temp tasting space

## Wine Walls

### PROS

- More space efficient
- Great to showcase your premium collection
- Wine tasting at ambient temperature - no coats required
- Less room preparation/building work required

### CONS

- More expensive per linear metre compared with walk-in wine rooms.
- Less authentic/immersive feel of a traditional cellar.



# Design Options Compared



## Wine Rooms

Recommended wine room set temperatures:

- Timber with double glazed glass = 12-15 °C
- Metal thermally broken doors with double glazing -12-15 °C
- Frameless glass (single glazed 10-12mm thick) - 15-17 °C

[View Our Wine Rooms](#)



## Wine Walls

Recommended wine room set temperatures:

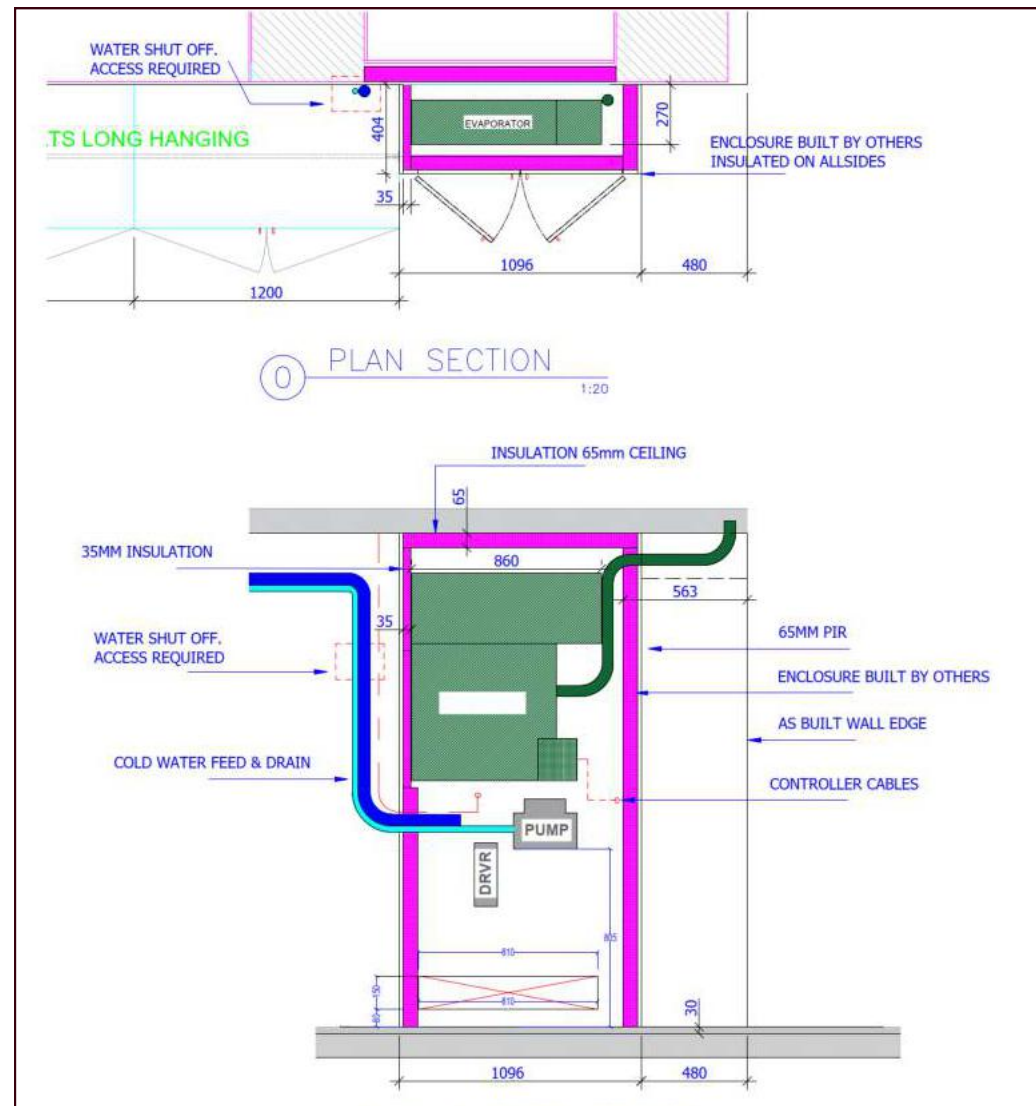
- Timber with double glazed glass = 12-15 °C
- Metal thermally broken doors with double glazing -12-15 °C
- Frameless glass (single glazed 10-12mm thick) - 15-17 °C

[View Our Wine Walls](#)



# Is Climate Control Really Needed?

In many cases YES, however get in touch early and we will provide objective advice



## Wine Rooms

Generally we recommend a specialist refrigeration split type system which can be air or water cooled with humidity control.

CRITICAL - MUST-HAVE'S when climate-controlling a wine room:

- Thermal Insulation to meet our recommended minimum u-value
- Vapour barrier - there must be a continuous vapour barrier throughout
- Doors - to have seals all round
- Glass - double or triple glazed (single glazing can work in some instances)
- Correct first-fix services must be in place (we will guide you through this process)

[Schedule a call](#)

## Wine Walls

Generally we recommend a specialist refrigeration split type system which can be air or water cooled with humidity control.

CRITICAL - MUST-HAVE'S when climate-controlling a wine wall:

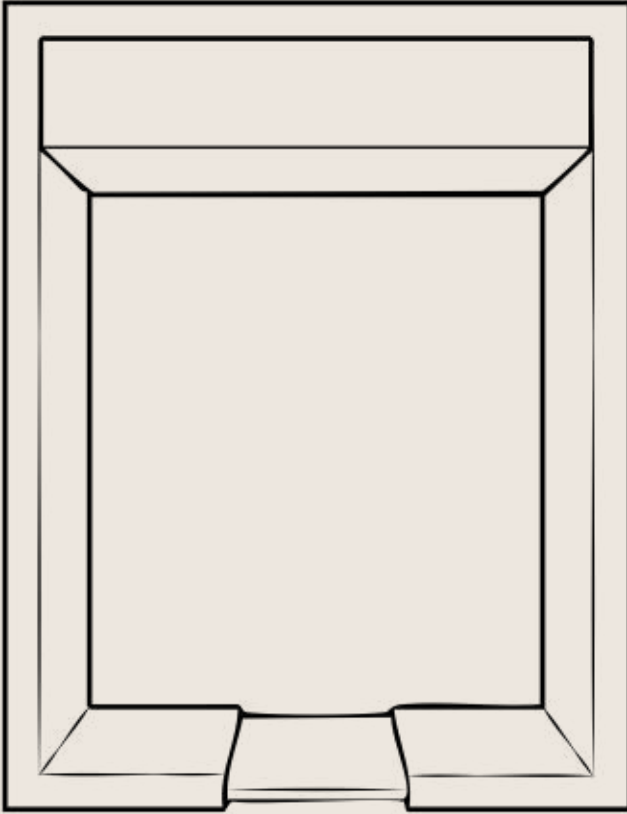
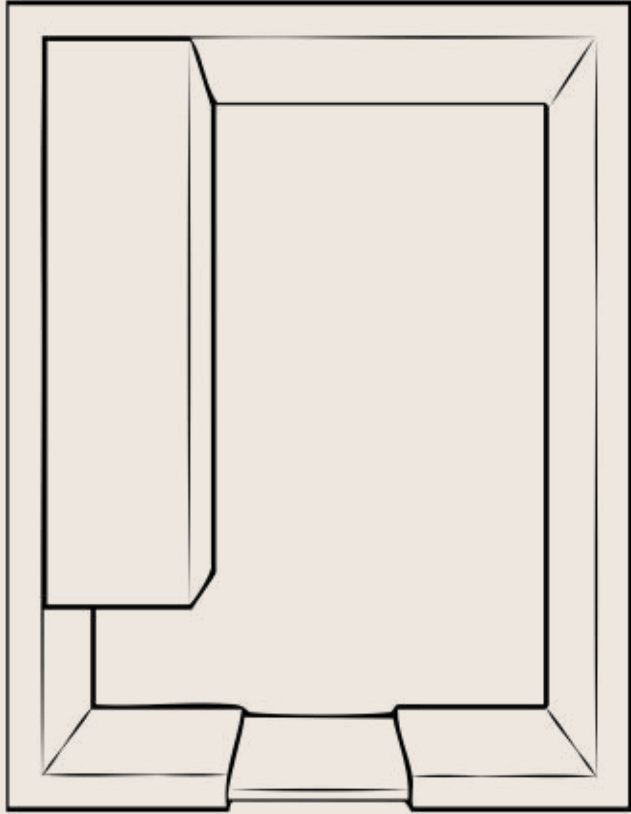
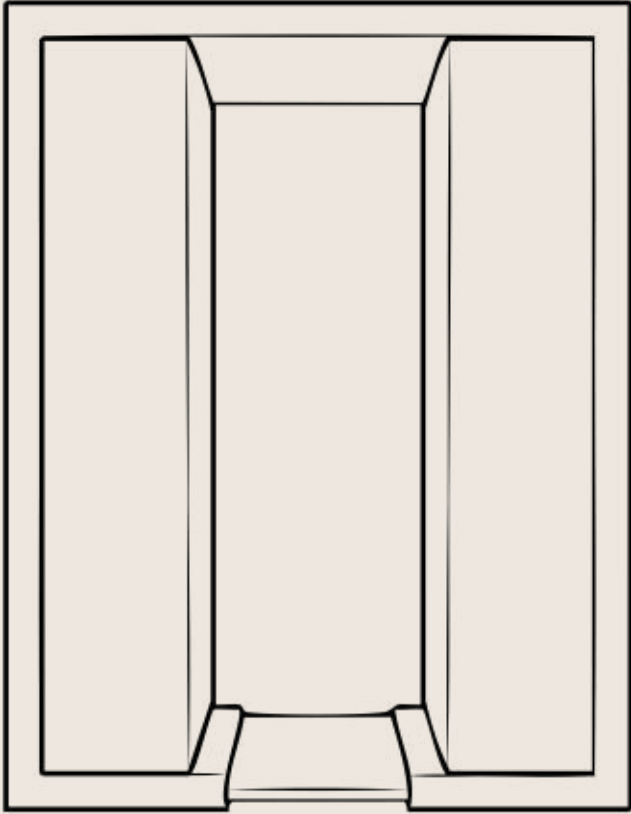
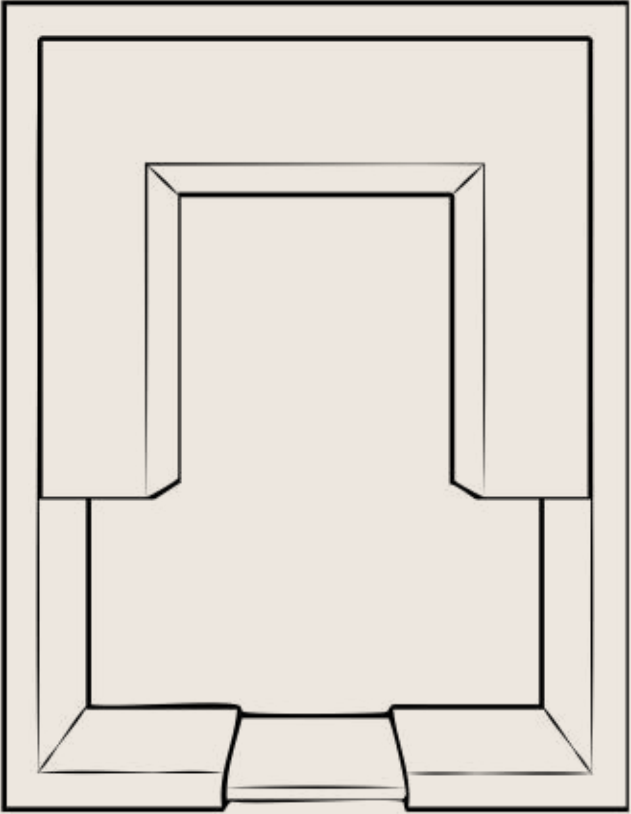
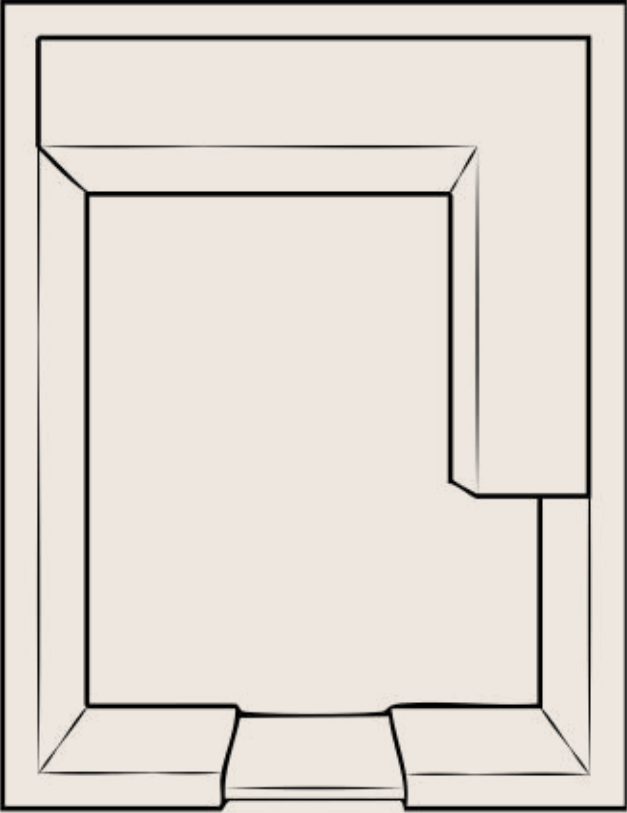
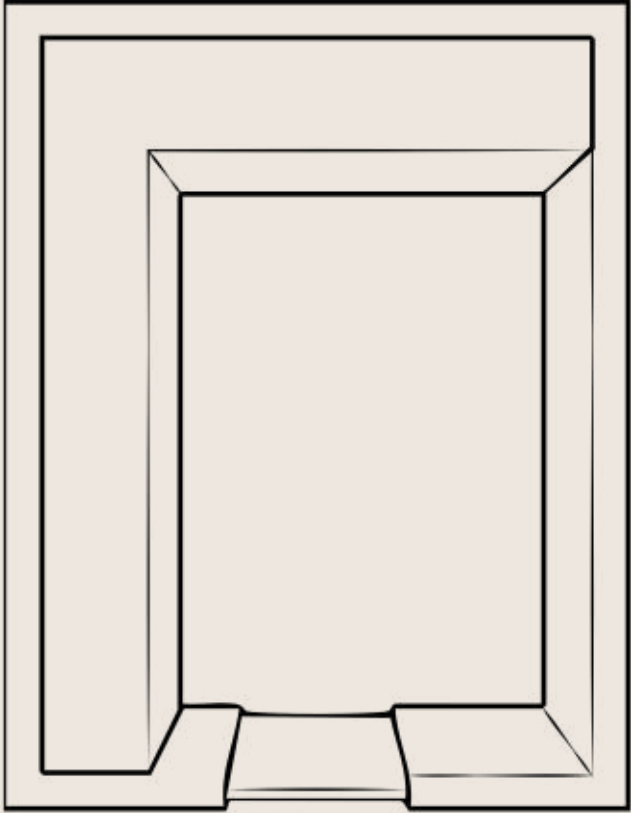
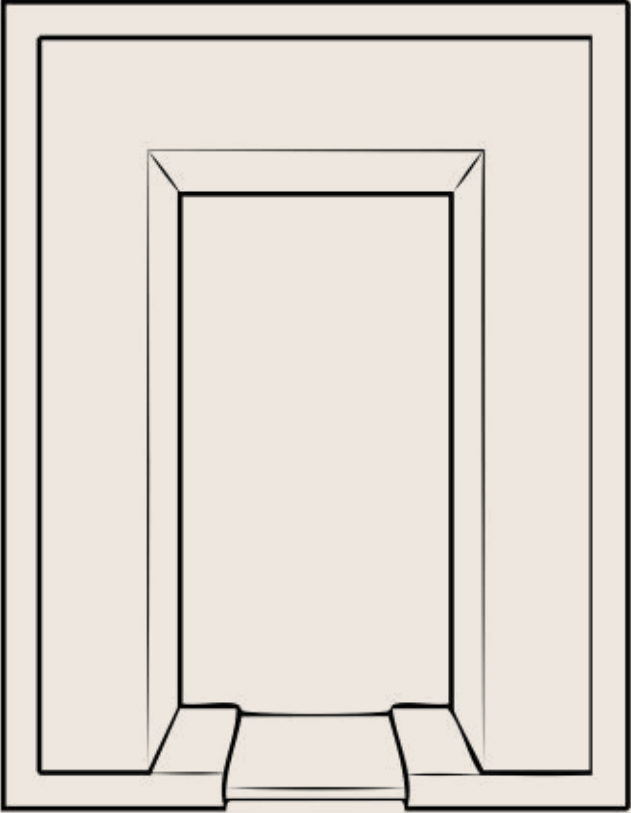
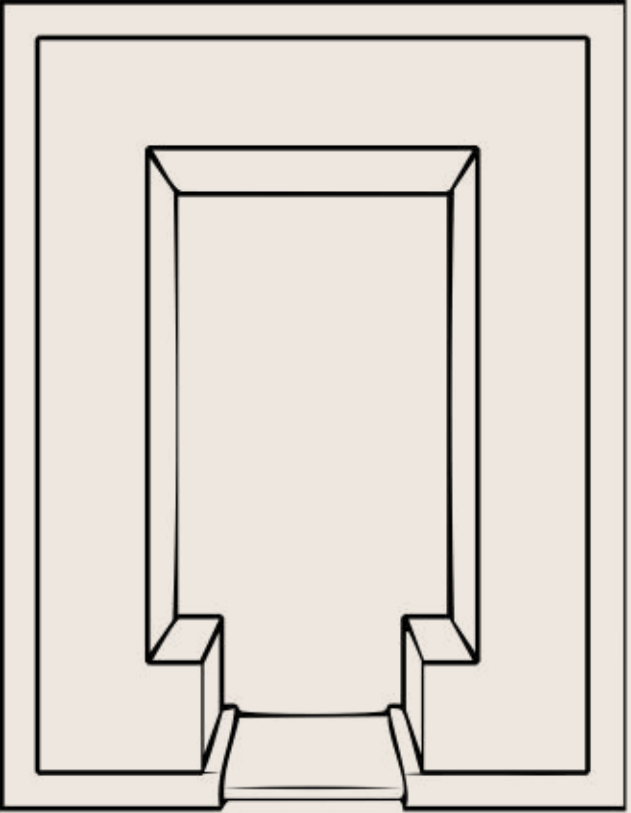
- Thermal Insulation within joinery (our specialist joinery is thermally insulated)
- Doors - to have seals all round
- Glass - double or triple glazed (single glazing can work in some instances)
- Correct first-fix services must be in place (we will guide you through this process)

[Contact Us](#)



# Example Wine Room layouts

Wine Rooms

Single wall		Single Wall - Visible ends		Double Walls - Facing		C Shaped - Visible ends	
L Shaped - Visible end		L Shaped - Wall to wall		C Shaped - Wall to wall		4 Walls - Visible ends	

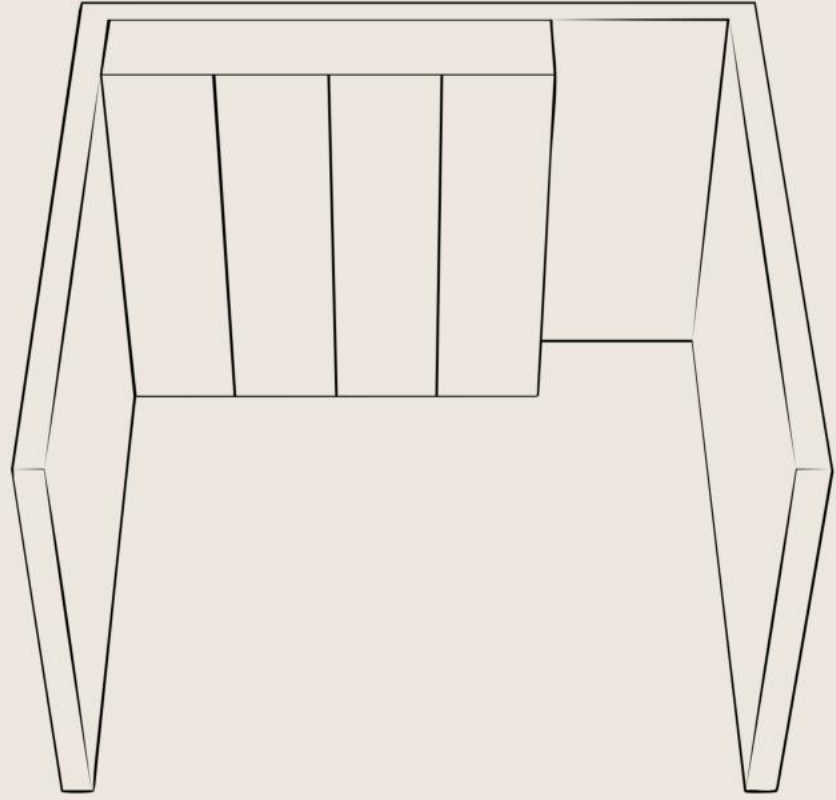
Don't worry If the layout you are looking for isn't shown, talk to us about tailored solutions\*



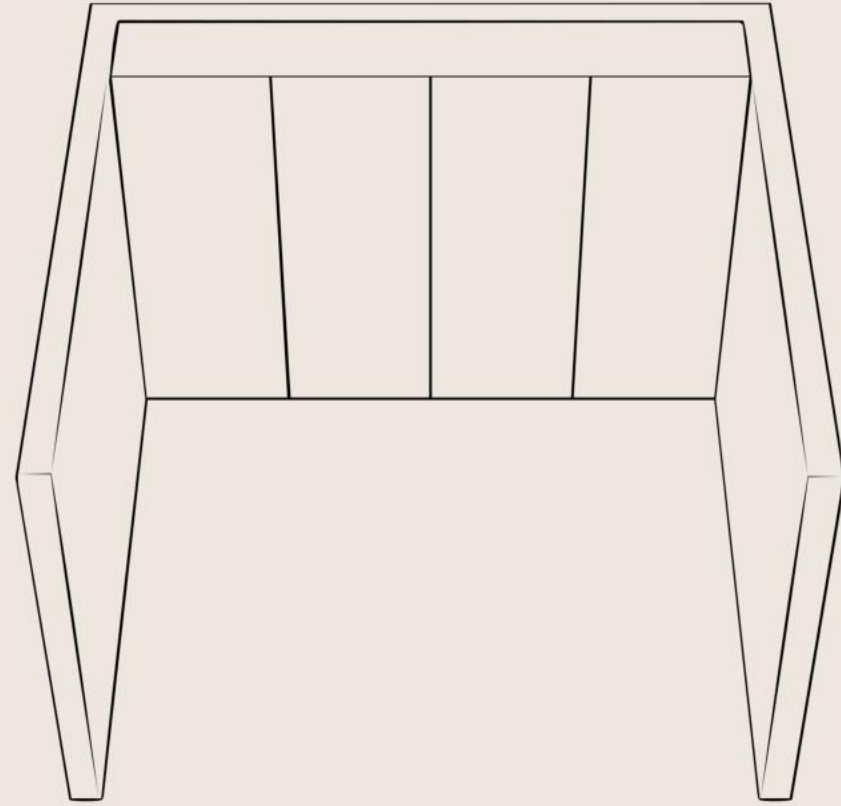
# Example Wine Wall layouts

## Wine Walls

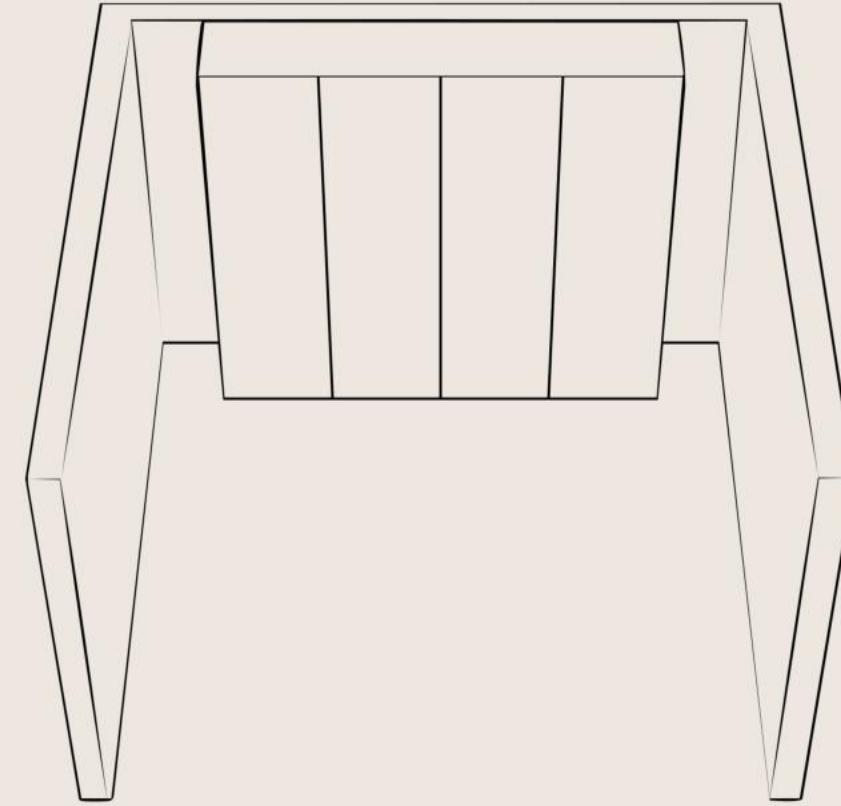
Single wall - Visible End



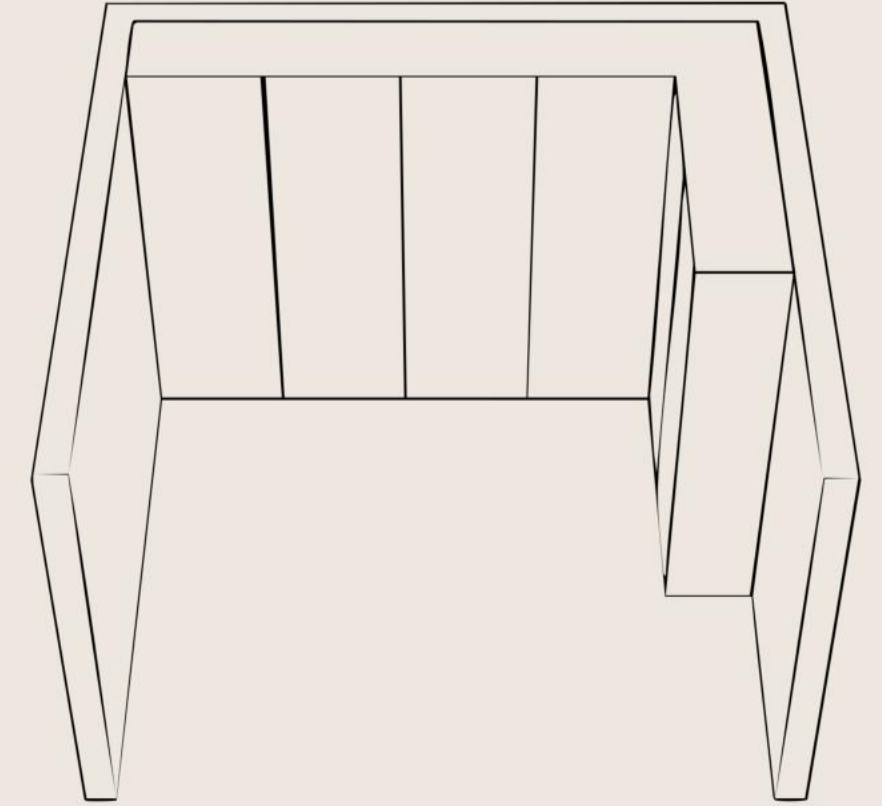
Single Wall - wall to Wall



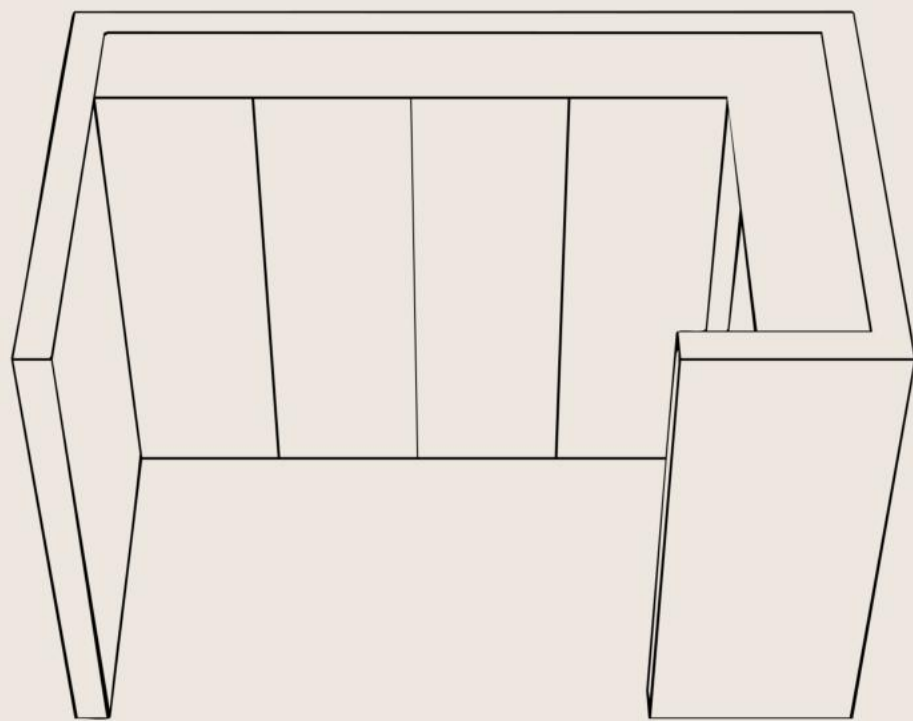
Single Wall - visible ends



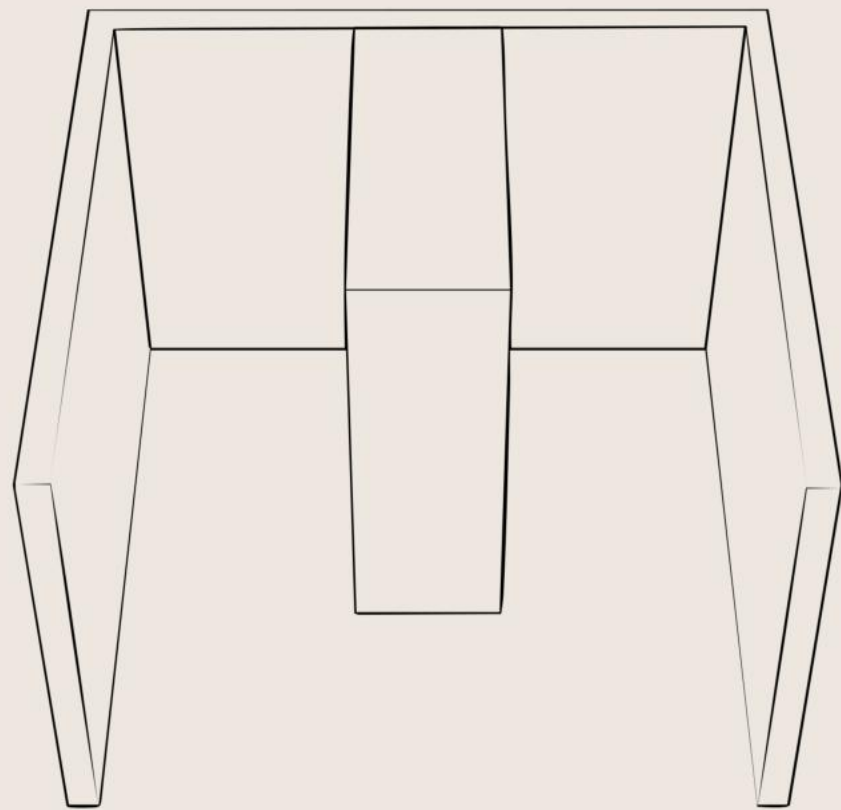
L Shaped - Visible end



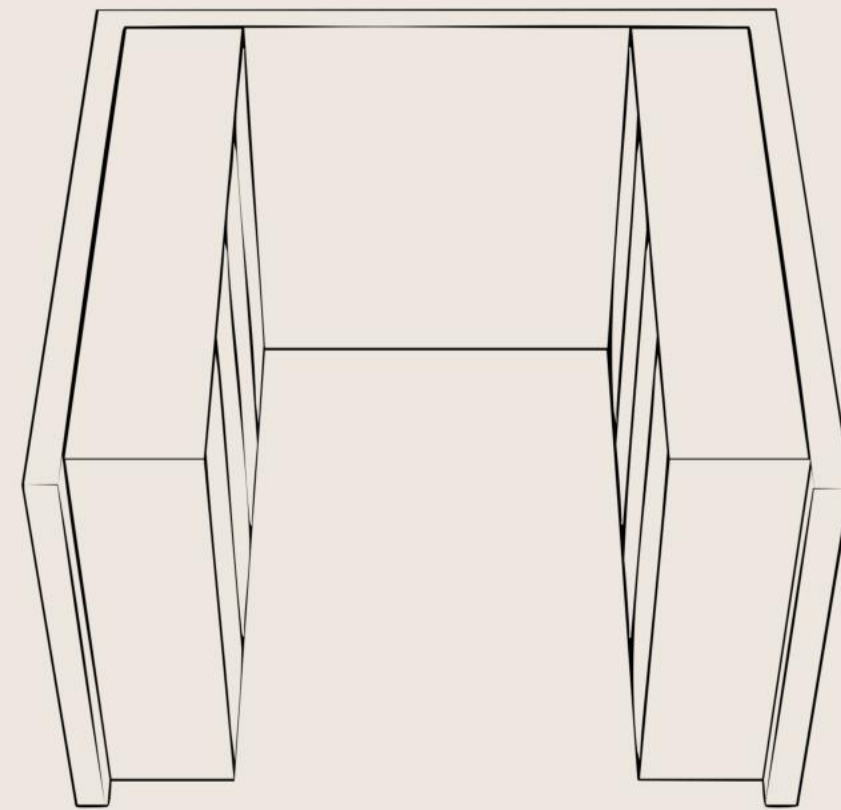
L Shaped - Closed ends



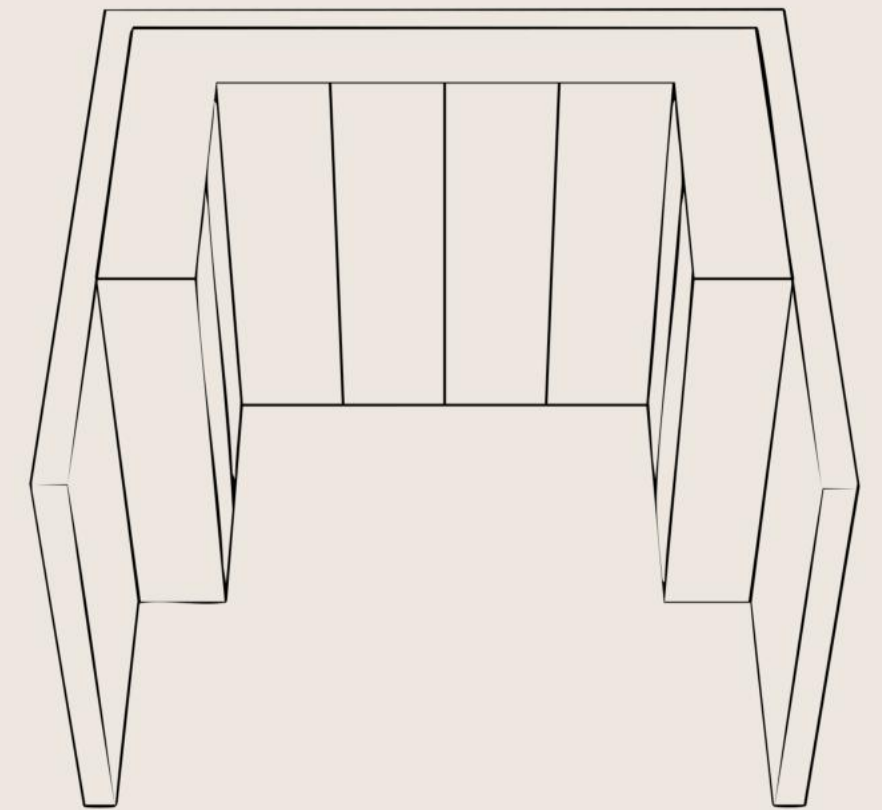
Double sided



Double walls - Facing



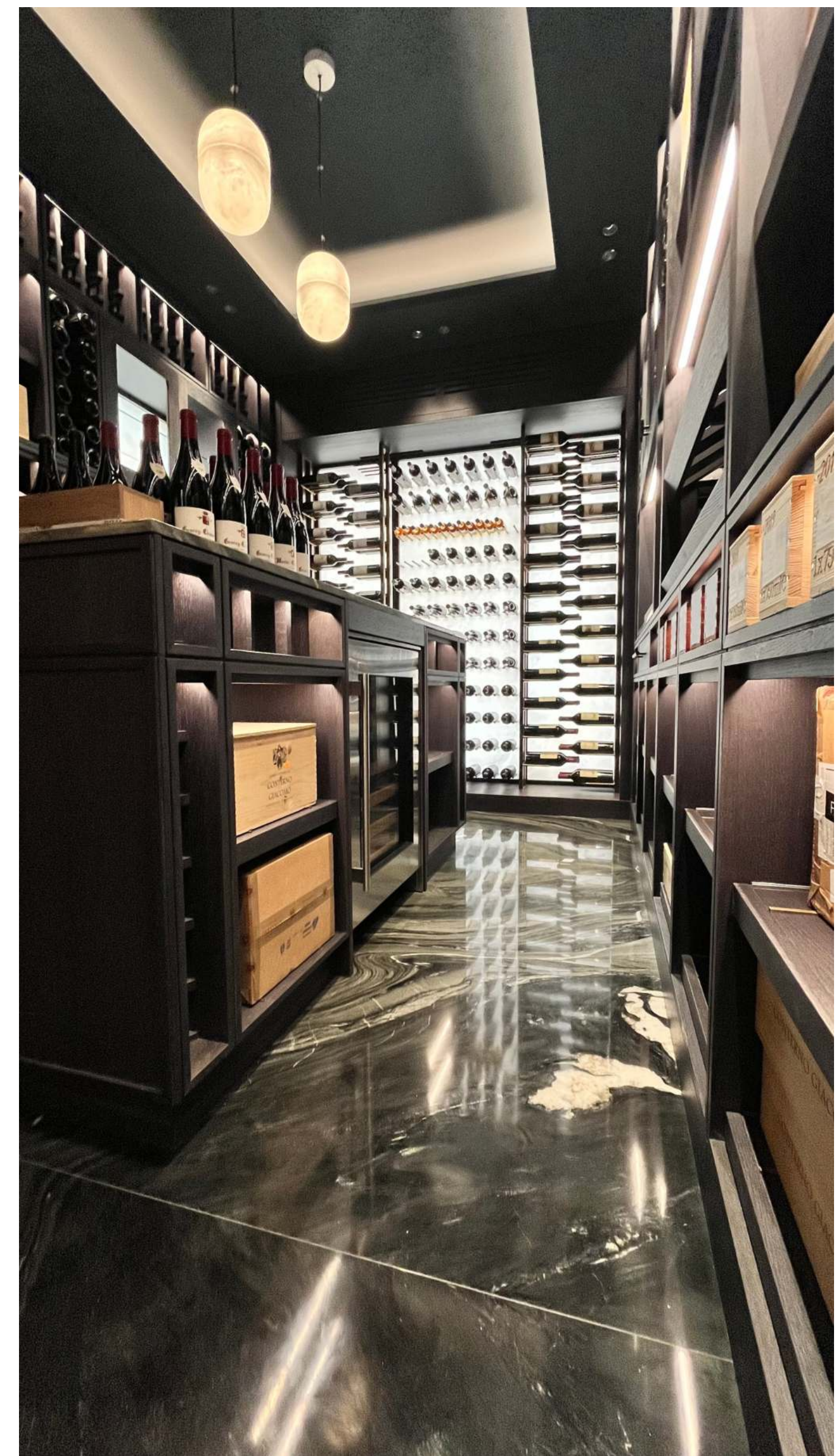
C- Shaped - Visible ends



Don't worry If the layout you are looking for isn't shown, talk to us about tailored solutions



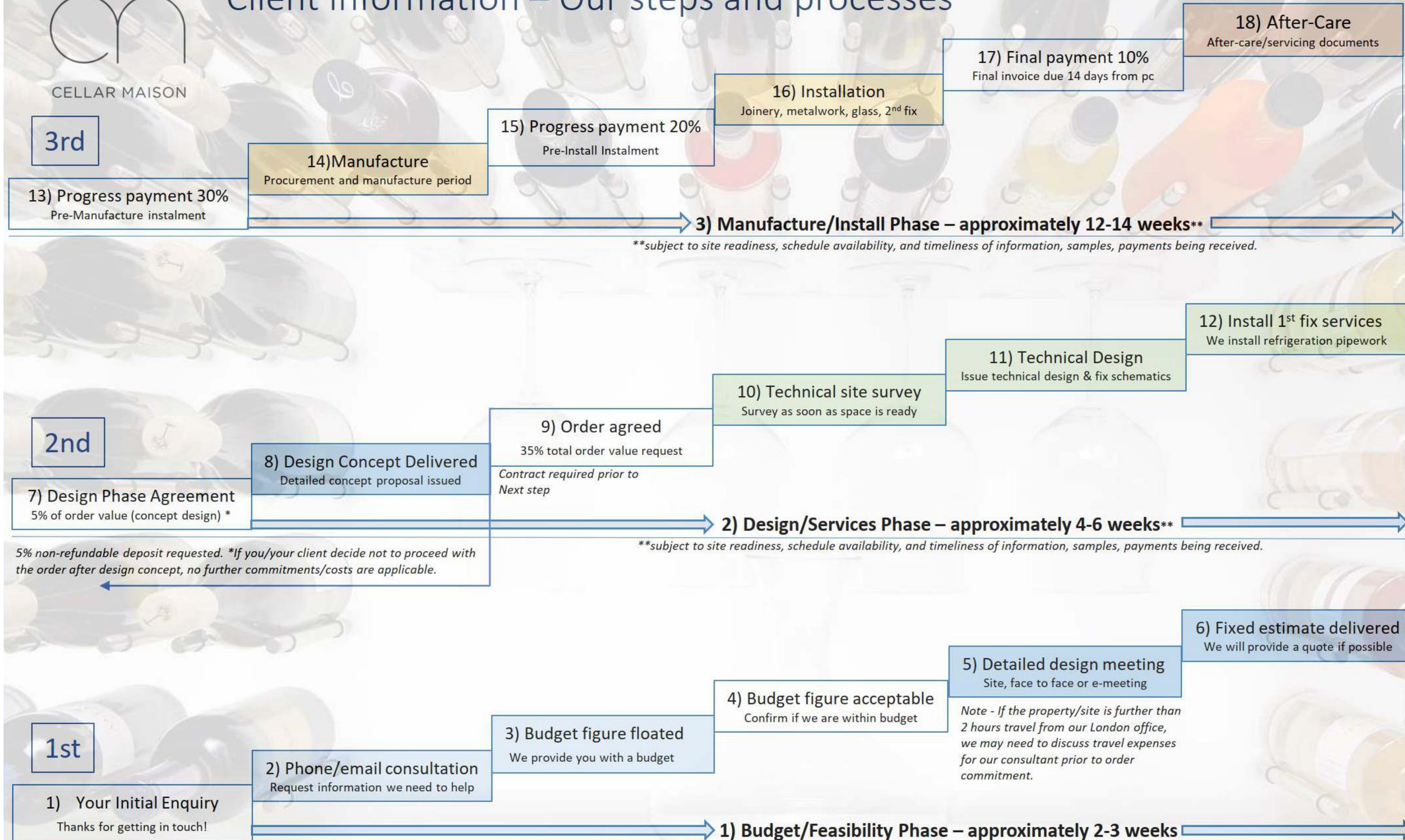
Did you know we undertake major works projects?





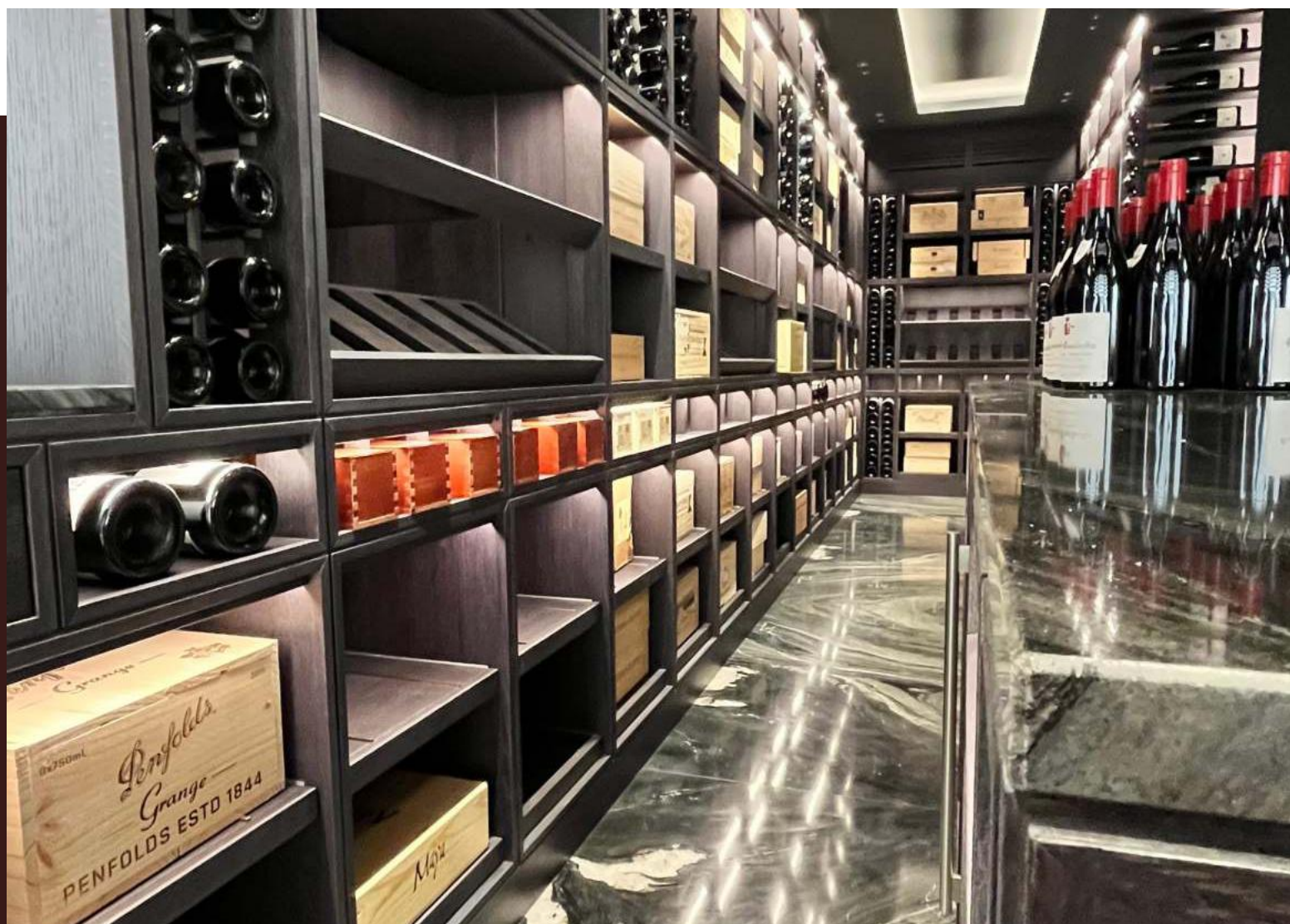


# Client Information – Our steps and processes





# How much does bespoke storage cost?



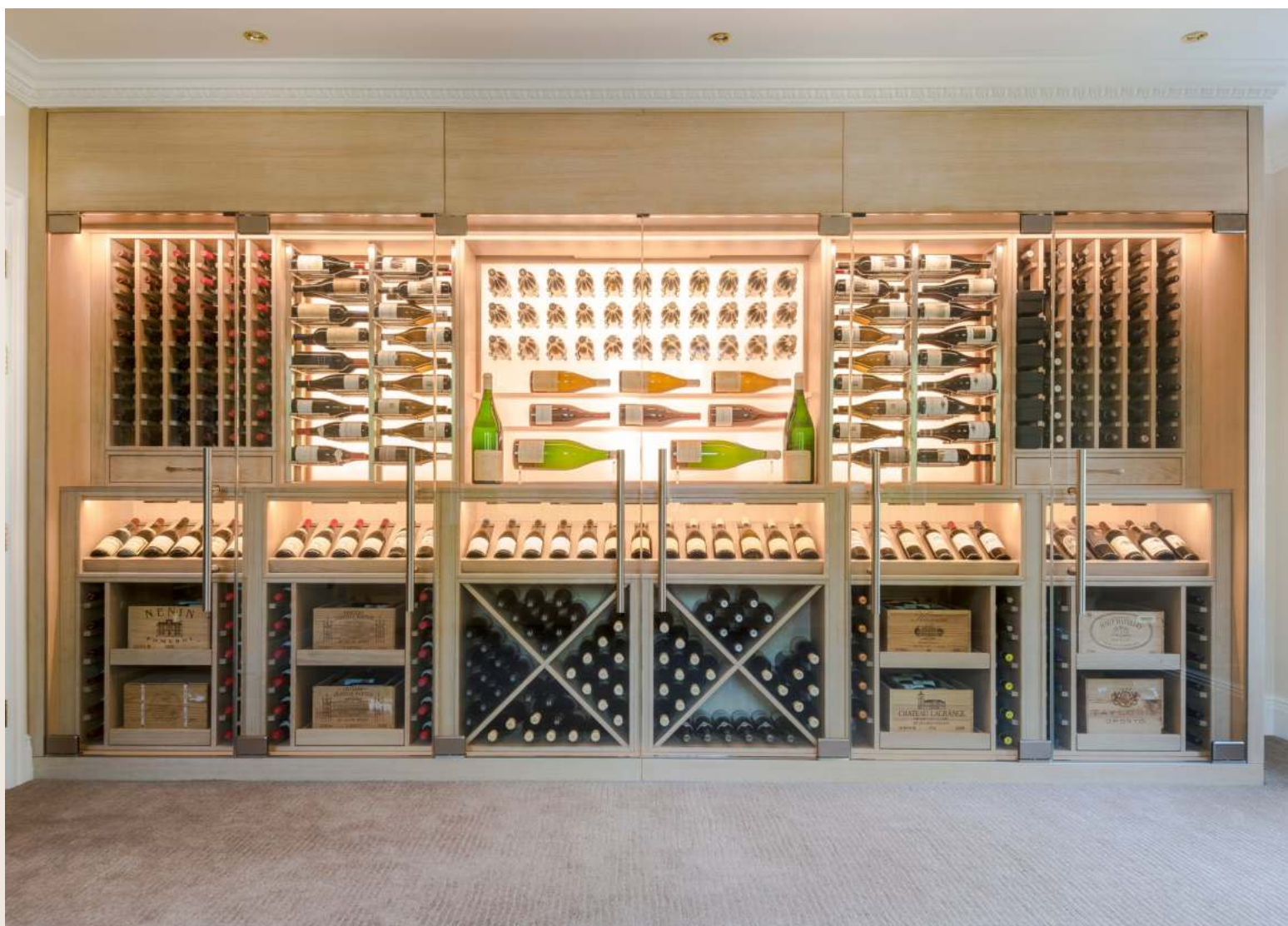
Wine Rooms

Price Guide:  
Our bespoke wine rooms can start from:  
£12,000+VAT without climate control.  
£25,000+VAT climate controlled option.

Like a Free Estimate?  
Complete the Design Planner below, or email  
info@cellarmaison.com

Wine Room Portfolio

Design Planner (bespoke)



Wine Walls

Price Guide:  
Our bespoke wine rooms can start from:  
£18,000+VAT without climate control.  
£28,000+VAT climate controlled option.

Like a Free Estimate?  
Complete the Design Planner below, or email  
info@cellarmaison.com

Wine Wall Portfolio

Design Planner (bespoke)



Wine Rack (configurable)

Price Guide:  
Modular wine racks, storage & display:  
From as little as £925+VAT for a 1.2m display

Like a Free Estimate?  
Complete the Design Planner below, or email  
info@cellarmaison.com

Brochure Download

Design Planner (configurable)





# Join us online.

Keep up to date with the latest trends and technology.

---



[cellarmaison.com](https://cellarmaison.com)



[@cellarmaison](https://www.instagram.com/cellarmaison)



[cellarmaison.com](https://www.linkedin.com/company/cellarmaison)



[@cellarmaison](https://www.facebook.com/cellarmaison)





# m CELLAR MAISON

Bespoke Wine Cellars

Click below to find out more.

[Schedule a call](#)

[Bespoke Wine Planner](#)

[Configurable Wine Planner](#)

[View Our Wine Rooms](#)

[View Our Wine Walls](#)

[View Our Configurable Racks](#)

UK office: THE OLD BREWERY, Smallfield Works, Station Road, Surrey, RH6 9HW, UK

Taking on projects throughout the UK, Europe, Australia and New Zealand

cellarmaison.com  
+44 (0) 203 633 3286