

**REDUCE
RISK**

**DETER
CRIME**

**IMPROVE
EFFICIENCY**

YOUR EYES ON EVERY SITE



BIGVIEW™

Real-Time Visibility. Smarter Decisions. Call Today.

BIGVIEW.AI | 855-861-6916 | 10187 US-54 Augusta, Kansas 67010

FAST DEPLOYMENT

FULLY MOBILE



REDUCE RISK, LOWER INSURANCE COSTS.

Construction sites are prime targets for theft and vandalism, leading to costly delays and increased insurance premiums. BIGView trailers provide a proactive security solution that helps sites meet **builder's risk policy requirements**, reducing liability and keeping projects on track.

SMARTER DECISIONS, LESS TIME SPENT, MORE SAVINGS.

BIGView trailers give you real-time access to all your sites from one screen, allowing you to monitor progress, review incidents, and make quick, informed decisions. Reduce unnecessary travel, prevent delays, and cut costs—all while **keeping your projects secure and on track.**

MULTIPLY OVERSIGHT.

STREAMLINE PROGRESS.

ENSURE SECURITY.

CAPTURE PROGRESS, SHOWCASE SUCCESS.

LIVE STREAMS & TIMELAPSE

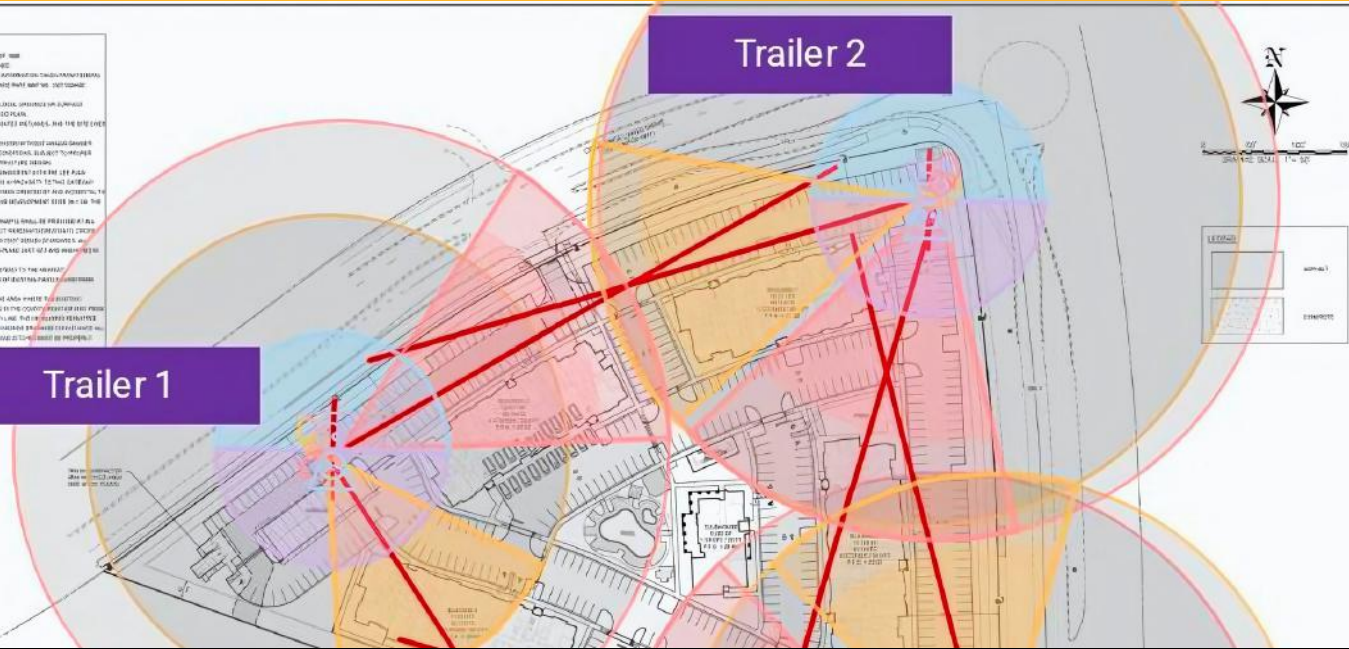
BIGView trailers do more than protect your site—they document its transformation. Our advanced cameras can create high-quality timelapses, giving you a powerful visual record of your project from start to finish. Whether for progress tracking, stakeholder updates, or marketing, **BIGView delivers clear, professional timelapses that showcase your work like never before.**



SCAN TO SEE EXAMPLES

CUSTOM COVERAGE SOLUTIONS FOR EVERY SITE

No two job sites are the same—that's why a one-size-fits-all security approach doesn't work. At BIGView, **we tailor surveillance solutions to your specific needs**, assessing your site's layout, risk factors, and security goals to create a plan that leaves no blind spots.



Our advanced surveillance technology, paired with strategic placement and optional pole-mounted expansion kits, ensures **total site visibility — day and night.**



BIGVIEW'S TECH: REDEFINING SECURITY STANDARDS

At the core of every BIGView trailer is a state-of-the-art head unit designed for unmatched site security. Featuring four HD cameras, powerful floodlights, deterrence strobes, a loudspeaker, and 5G LTE connectivity. It provides crystal-clear footage and real-time monitoring.

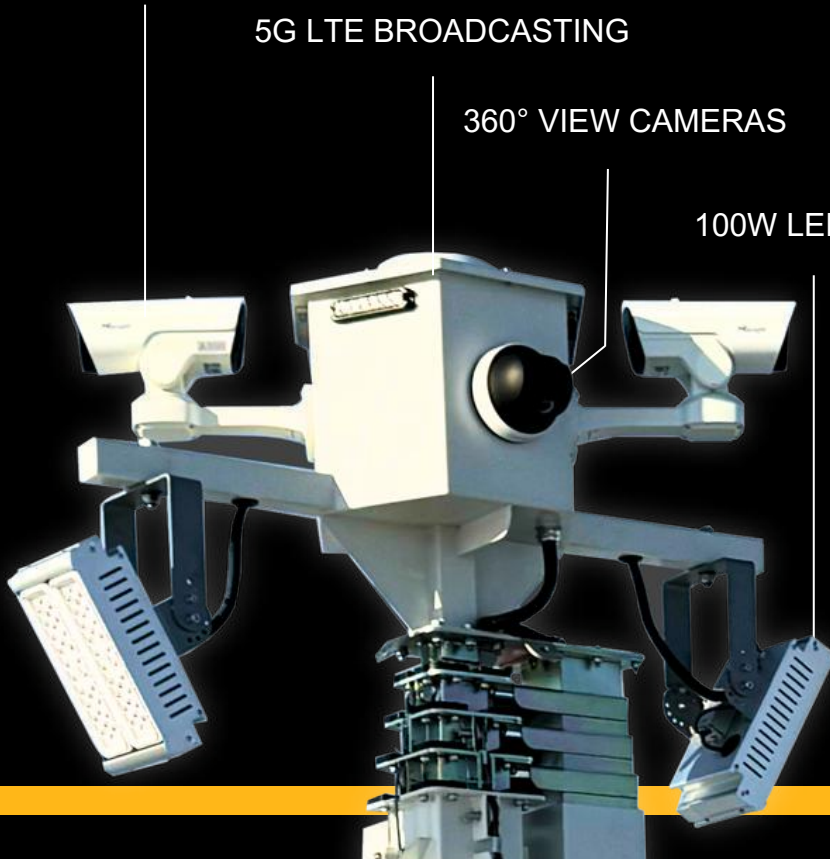
— **anytime, anywhere.**

23x ZOOM PTZ CAMERA

5G LTE BROADCASTING

360° VIEW CAMERAS

100W LED FLOOD LIGHTS



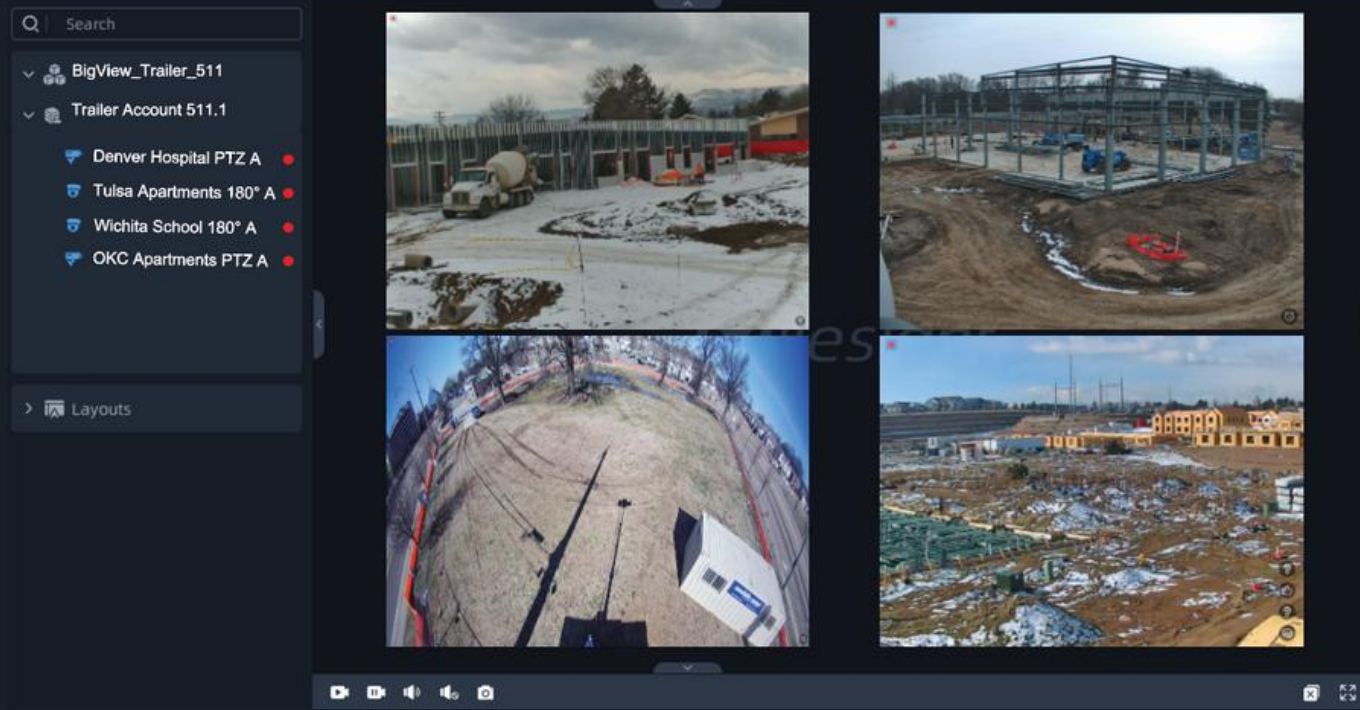
EXPANDABLE REMOTE KIT



The expandable pole mount kit extends surveillance beyond the perimeter, providing clear views of interior areas and **eliminating blind spots**. Perfect for monitoring job sites, equipment yards, or sensitive areas with ease.

SCAN FOR PRICING
DETAILS AND MORE

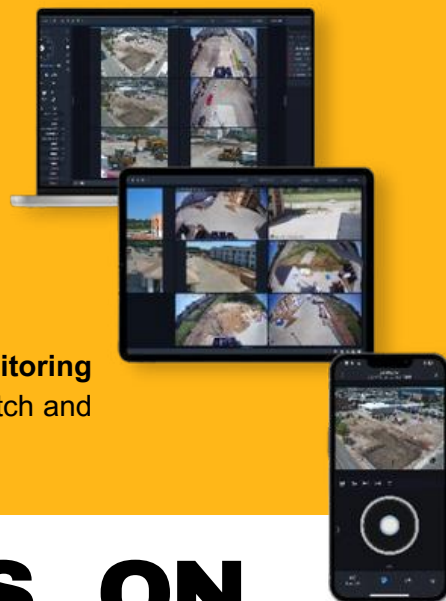




ALL OF YOUR SITE, ALWAYS IN SIGHT.

BIGView trailers come equipped with Milesight, an industry-leading VMS, giving you instant access to all your sites and can also seamlessly integrate with your existing system.

For added protection, our **optional UL Certified 24/7 monitoring service** ensures trained professionals are always keeping watch and can dispatch authorities on your behalf.



MULTIPLE SITES ON ONE PANE OF GLASS.





YOUR SECURITY, OUR COMMITMENT

At BIGView, we take a proactive approach to security, helping you reduce risk, protect assets, and stay ahead of threats. **More than just surveillance, we provide peace of mind** with tailored solutions and lasting partnerships. With BIGView, you get more than equipment—you gain a dedicated partner in safety and success.



**PROUD
MEMBERS
OF THE A.G.C**



"BIGView trailers have completely changed the way we manage our job sites. The visible presence alone deters theft, but the real game-changer is the ability to monitor multiple sites in real-time. I can assess progress, review incidents, and make quick decisions—like stopping crews from heading to a flooded site—all without wasting time traveling. It's not just security, it's smarter site management."

– Stan S., Regional Superintendent