

PROM OUTFITS/ACCESSORIES

HIRE CATALOGUE



There are a selection of second-hand dresses, suits and accessories in a variety of different colours and styles for our Year 11 students to hire for Prom 2023.



If you would like to try on one of the prom outfits, ask about deposits or have a look at the selection of accessories below, then please speak with Mrs Phipps in person or by email:

e.phipps@thepolesworthschool.com

Welcome to our Year 11 Prom 2023 Outfits/Accessories Hire Catalogue!

Disclaimer: All outfits and accessories require a deposit before they can be hired however, once the item/items have been returned in their original state then the deposit will be given back.





Light Blue Beaded Halter Neck Dress
Size 10



Sage Green Laced Shoulder Dress (Pouch Bag to the right included)
Size 10



Silk Pouch Bag comes with the Sage Green Dress to the left



Dark Blue Crystal Court Shoes: Size 4



Silver Floral Beaded Dress (front)
Size 10



Silver Floral Beaded Dress (back)



Red Strapless, Ruched above the knee Dress
Size 8



Mauve with Black Overlay One-Shoulder Dress (front)
Size 18



Mauve with Black Overlay One-Shoulder Dress (back)



Black V-Neck Dress
Size 16



Navy Blue Multiway Dress (front)
Size 18



Navy Blue Multiway Dress (back)



Royal Blue Silver Sequin above the knee Dress
Size 8



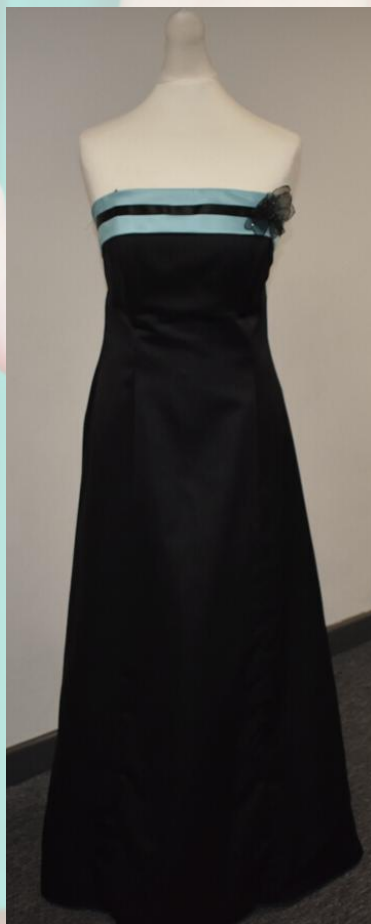
Navy Blue Embellished Dress with Train (front)
Size 8/10



Navy Blue Embellished Dress with Train (back)



Blue Satin Boned Dress with Bow Detail and Criss/Cross Straps at the back
Size 6/8



Strapless Black Satin Dress with Turquoise Detail
Size 12/14



Red Keyhole Front Dress with Criss-Cross Sequin Band Detail
Size 10



Black One Strap Crystal Detail Dress (front)
Size 16



Black One Strap Crystal Detail Dress (back)



**White Princess Dress with Corset Top
Diamante Detail**
Size 10



Sky Blue Full Princess Dress with Sequined Bodice and Skirt
Size 8



Grey Pinstriped Two-Piece Suit with Shirt and Tie
Trousers: 30cm Waist and 31cm Length
Jacket: 36R
Shirt: 15.5" Collar



Black and Gold Chiffon Dress with Keyhole Front (front)
Size 10



Black and Gold Chiffon Dress with Keyhole Front (back)



Black Patent Point Kitten Heels: Size 6



Assortment of Jewellery and Hair Accessories



Lilac High Neck Backless Dress with Sequin and Pearl Detail (front)
Size 12



Lilac High Neck Backless Dress with Sequin and Pearl Detail (back)



Black Tuxedo Satin Lapel Two-Piece Suit Jacket: Size not stated
Trousers: 38S



Black Two-Piece Suit Jacket: 44R
Trousers (large)



Red Removable Straps Corset Dress with Back Gathered Waist (front)
Size 8/10



Red Removable Straps Corset Dress with Back Gathered Waist (back)



Coral V-Neck Ruched Dress (front)
Size 8/10



Coral V-Neck Ruched Dress (back)

Slim Fit Dark Blue Three-Piece Suit with Shirt and Tie (three images below)
Trousers: 30R (76cm)
Waistcoat: 38R (96.5cm)
Jacket: 38S (96.5cm)
Shirt: 15" Collar





Black and White Full Strapless Dress with Jewel Detail
Size 6



Black Empire Line Strapless Dress with Detachable Straps and Sequin Detail. Size 20



Black Laura Ashley Halter Neck Dress with Silver/Purple Detail
Size 16



Black Heart-Shaped Neckline Dress with Sequin Detailing and Gathered Chiffon Hem
Size 14



Red Laura Ashley Vintage Styled Ankle-Length Dress
Size 10



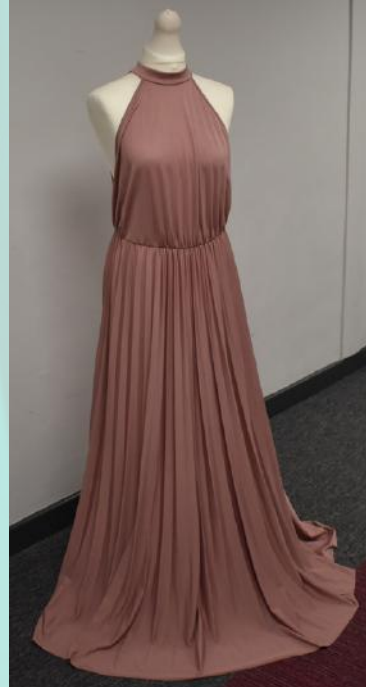
**Long Halter-Neck Blush Pink Dress with Satin Tie Up Waist Belt (at the back) and Beaded Neckline
Size 8**



**Long Navy Blue Halter-Neck Dress with Gathered Detail
Size 10, 12 and 14 available**



**Dark Green, Off The Shoulder Fishtail Dress with Heart-Shaped Neckline and flower/Lace Black Detailing
Size 18**



**Long Halter-Neck Dusky Pink Pleated Dress with Cut Out Back
Size 14**





Long Pale Green Dress with Pleated Bodice and Jewelled Detailing and Satin Criss-Cross Straps
Size 14



Long Ruched V-Neck Light Purple Dress
Size 12



Long Halter-Neck Pink Pleated Dress
Size 16