



The Galapagos Islands

8 DAYS OF WONDER
& AMAZEMENT



** Think biology class - with deck chairs **



Your 8-Day Itinerary *(subject to change)*

Day 1: En Route / Arrive in Quito, Ecuador
Overnight: Casa Gangotena – Quito

Day 2: Quito (B,L,R)
Guided walking tour of Old Town, market shopping, Jesuit Church of la Compañía, Casa del Alabado Archaeological Museum
Overnight: Casa Gangotena – Quito

Day 3: Quito / Flight to Baltra / Santa Cruz: Highlands / Puerto Ayora – Embarkation (B,L,D)
Santa Cruz Highlands, Puerto Ayora, giant tortoises at Charles Darwin Research Station
Overnight: *Isabela II*

Day 4: Bartolomé / Santiago: Sullivan Bay (B,L,D)
Beach walk, Pinnacle Rock, snorkel opportunity
Overnight: *Isabela II*

Day 5: Santa Cruz: Dragon Hill / Santiago: Buccaneer Cove Bay (B,L,D)
Lagoon walk, avian wildlife viewing, snorkel opportunity
Overnight: *Isabela II*

Day 6: Isabela: Punta Vicente Roca / Fernandina: Punta Espinoza (B,L,D)
Panoramic island viewing, glass-bottom boat ride, white sand beach, sea turtle spotting, farewell dinner
Overnight: *Isabela II*

Day 7: Baltra – Disembarkation / Flight to Quito, Ecuador (B,L)
Overnight: Wyndham Quito Airport Hotel

Day 8: Quito / Depart for U.S. (B)
(B=Breakfast, L=Lunch, D=Dinner, R=Reception)

Activity Level: Guests should be sure-footed on stairs and able to walk at least one mile on rocky, volcanic, and uneven ground, as some nature hikes will be on irregular and steep terrain. Guests should also be comfortable managing wet beach landings and boarding small vessels, both from shore and the deck of *Isabela II*. Maximum elevation: 9,350 feet in Quito, Ecuador.





Immerse

- During a full day tour of Quito, marvel at the gold leaf interior of the Jesuit Church of la Compañía—a fine example of the mix of European influences and indigenous art called the Baroque school of Quito; enjoy a lunch of Ecuadorian specialties; and view a unique collection of pre-Columbian art.

Uncover

- Observe with remarkable proximity the diversity of endemic species such as the Nazca and blue-footed boobies; giant tortoises; marine and land iguanas; the flightless Galapagos cormorant; and the famous Darwin's finches.
- Discover the myriad of aquatic wildlife in the clear waters of the world's second largest marine reserve.

Marvel

- Snorkel with sea lions, colorful tropical fish, and sea turtles—or observe them through a glass bottom boat.
- Explore secluded inlets and stroll sweeping white sand beaches such as Punta Espinoza, where a variety of animals frolic in a fine display of multi-species tolerance in the nearby lagoon.
- Visit dramatic and historic places, including the Charles Darwin Research Station.

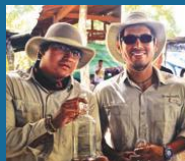
What's Included

- 3 nights hotel accommodations and 4 nights aboard the *Isabela II*
- A welcome reception in Quito, plus 7 breakfasts, 6 lunches, and 4 dinners, including a farewell dinner
- All excursions and presentations
- Complimentary use of kayaks, paddle boards, shorty wetsuits, and snorkeling equipment
- Galapagos National Park entrance fee and transit card
- Internal airfare (from Quito to the islands on day 3, and return to Quito on day 7)
- Gratuities to local guides, hotel porters, and drivers in Quito
- Airport transfers for guests arriving and departing during the suggested times



Your Expedition Leader

Viewing the Galapagos Islands alongside an Orbridge Expedition Leader is a special experience. While observing wildlife, they will offer expert descriptions of methods of survival and behaviors. Together on panga rides, nature walks, and aboard the *Isabela II*, you will gain understanding of the endangered species who inhabit the waters and land of the archipelago.

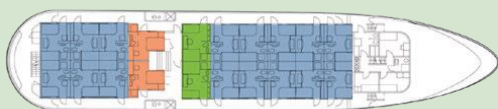


Orbridge



Isabela II

The 40-guest capacity of *Isabela II* provides 21 staterooms with spacious, comfortable accommodations and en suite facilities.



Cabin deck



Main deck



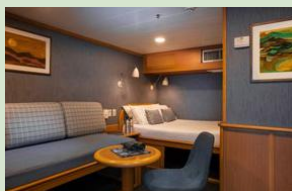
Standard

Full-size bed, window, private bathroom with shower.
128 sq. ft.



Classic Twin

Two twin beds, view window, private bathroom with shower.
139 sq. ft.



Classic Double

Full-size bed, view window, daybed, private bathroom with shower.
139 sq. ft.



Premium Suite

Queen bed, view window, wardrobe, private bathroom with shower.
170 sq. ft.

Hotel Accommodations (subject to change)

CASA GANGOTENA – QUITO

Before embarkation, stay at five-star Casa Gangotena. Located across from Plaza San Francisco in the heart of Quito's Spanish Colonial Old Town, the hotel offers easy access to the rich culture, tradition, and charm of the city's historic center.



WYNDHAM QUITO AIRPORT HOTEL

Conveniently located near the Mariscal Sucre International Airport, the Wyndham Quito Airport Hotel offers comfortable and convenient accommodations for the last night of the program.



Optional Pre-Tour Mashpi Lodge



The breathtaking surroundings of the Mashpi Rainforest Biodiversity Reserve look and feel like a dream—misty clouds, crashing waterfalls, and endemic species of wildlife found in the Ecuadorian Chocó, one of the most diverse ecosystems in the world. Take the unparalleled opportunity to visit both a cloud forest and a rainforest—each rich with a myriad of flora and fauna species, in every layer—from below the forest floor to above the canopy.

Pre-Tour Itinerary *(subject to change)*

Day +1: En Route / Arrive Quito, Ecuador
Overnight: Casa Gangotena

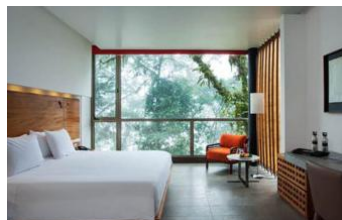
Day +2: Mashpi Lodge / Mashpi Reserve (B,L,D)
Morning drive to Mashpi, forest activities, night walk
Overnight: Mashpi Lodge

Day +3: Mashpi Lodge / Mashpi Forest (B,L,D)
Leisure time, forest exploration, lectures
Overnight: Mashpi Lodge

Day +4: Mashpi / Quito / Main Program (B,L)
Late morning group transfer to Quito to join the main program

What's Included

- 1 night accommodations at Casa Gangotena in Quito and 2 nights accommodations at award-winning Mashpi Lodge
- 3 breakfasts, 3 lunches, and 2 dinners
- Entrance to Mashpi Reserve
- *Dragonfly* aerial tram experience
- Full guiding services, including interpretation on all activities and experiences within the reserve, and use of spotting scopes and binoculars
- Specialized lectures and field presentations on research conducted in the reserve by local experts
- All transportation for excursions using vehicle transport in the reserve; and all gratuities and portage
- Group transfers from Quito Mariscal Sucre International Airport to Casa Gangotena during suggested arrival times, from Casa Gangotena to Mashpi Lodge, and return to Quito to join the main program



Optional Post-Tour Machu Picchu



Travel to the mist-shrouded mountain citadel of the Incas. So remote and inaccessible that it was left untouched by the Spanish conquistadors, Machu Picchu was unknown to the outside world until Hiram Bingham rediscovered it in 1911.

Post-Tour Itinerary *(subject to change)*

Day 7: Depart Main Program from Quito to Lima, Peru

Depart Quito and arrive in Lima, Peru for an overnight

Overnight: Wyndham Costa del Sol Lima Airport

Day 8: Arrive Cusco, Peru / Sacred Valley (L,D)

After arrival, lunch with sweeping views of the Sacred Valley

Overnight: Sonesta Posadas del Inca – Yucay

Day 9: Sacred Valley / Machu Picchu (B,L,D)

Stroll Ollantaytambo, scenic Vistadome train to Machu Picchu, guided tour of “The Lost City of the Incas”

Overnight: Inkaterra Machu Picchu Pueblo Hotel

Day 10: Machu Picchu / Sacred Valley / Cusco (B,L,D)

Morning guided tour with time to hike at your own pace, Vistadome train ride to Ollanta, return to Cusco

Overnight: Aranwa Cusco Boutique Hotel

Day 11: Cusco / Saqsayhuaman / Kenko / Villa Tipón / Cusco (B,L,D)

San Pedro Market, Qorikancha (Temple of the Sun), Saqsayhuaman and Kenko archaeological sites, private home lunch at Villa Tipon with Pachamama experience

Overnight: Aranwa Cusco Boutique Hotel

Day 12: Cusco (B,L,D)

Morning tour of local artisans or museums, afternoon at leisure, evening farewell dinner

Overnight: Aranwa Cusco Boutique Hotel

Max elevation: 11,200 ft. in Cusco, Peru

Day 13: Cusco / Flight to Lima / Depart for U.S. (B,L)

Morning at leisure, flight to Lima, evening flights depart for U.S.

Group Day Room: Hospitality Suite at the Wyndham Costa del Sol Lima Airport
(or similar accommodations)

What's Included

- 5 nights premium accommodations and a group day room on departure day
- 5 breakfasts, 6 lunches, and 5 dinners
- Fully guided tours and field presentations from local experts
- All ground excursion transportation, including Vistadome train through the Urubamba Valley
- Luggage portage
- Gratuities to guides, drivers, and waiters for included meals
- Airport assistance for guests arriving and departing during the suggested times

