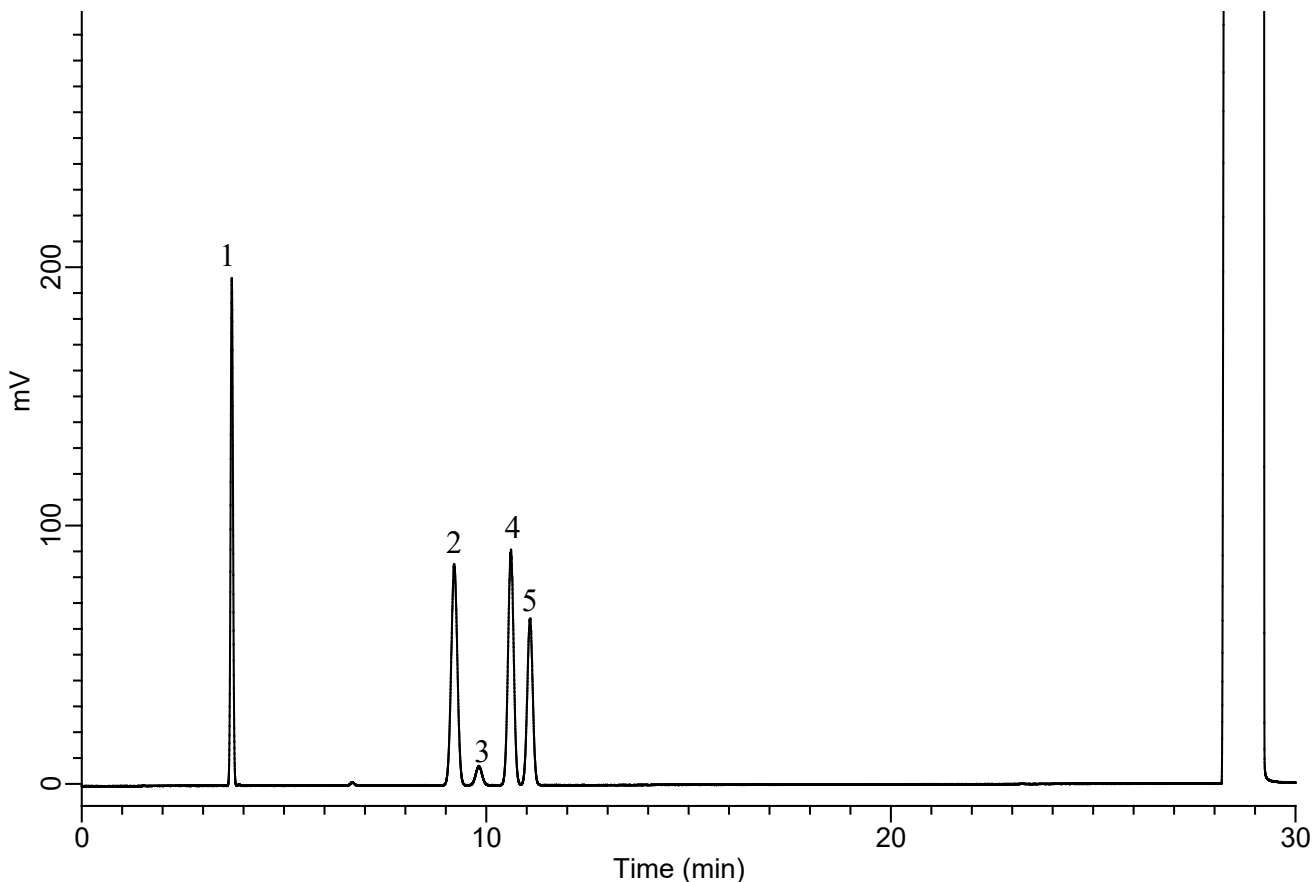


InertSearch for GC

InertCap Applications

Residual solvents in pharmaceuticals (JP18 Standard stock solution Class 1)

Data No. GA 322-0155



Conditions

System : GC4000 Plus-FID
Column : InertCap 624MS
0.32 mm I.D. × 30 m df = 1.80 μm
Col. Cat. No. : 1010-64747
Col. Temp. : 40 °C(20 min) - 10 °C/min
- 240 °C(20 min)
Carrier Gas : He 2.20 mL/min (35cm/sec)
Injection : Split 20:1
250 °C
Detection : FID Auto Range
250 °C
Sample Size : 1.0 μL
Analyte in Dimethyl sulfoxide

Analyte (R.T. min)

1. 1,1-Dichloroethene (3.707)
2. 1,1,1-Trichloroethane (9.202)
3. Carbon tetrachloride (9.817)
4. Benzene (10.609)
5. 1,2-Dichloroethane (11.083)