



PHARO
CATTLE COMPANYTM

2025
AI Sire Directory



Your ONLY Source for TENET® Certified Bulls



A.I. — Help or Hindrance

Many progressive cow/calf producers have been using artificial insemination (AI) in an attempt to improve the profitability and the genetic base of their cowherd. Unfortunately, A.I. has taken most commercial ranchers in the wrong direction. The more they AI, the less profitable and less efficient their cowherd becomes. Does this mean that AI has no value and won't work?

Absolutely not, but A.I. will never be any better than the bulls you are using. There are bulls that will help you meet your breeding objectives and there are bulls that will actually hinder your breeding program. It's up to you to select the right bulls. A word of caution, though. Don't be misled by pretty pictures and big numbers.

Although most of the bulls available through the major AI companies take pretty side-view pictures and have impressive EPDs, they don't have what the commercial rancher needs. For the most part, they are tall, slab-sided bulls with too much birth weight, too much growth, too much milk, and not near enough guts, muscle and fleshing ability. They were produced by high-maintenance, pampered cows in a high-input, artificial environment. A bull with a frame score under 6 is a rarity. So, unless you want to produce high-maintenance, hard-keeping cows that weigh 1400 to 1800 pounds, these bulls simply won't work.

We suggest you use bulls whose mothers, sisters and daughters are proving themselves in real-world ranching environments. The bulls you use should be coming from cowherds that are treated as tough as or tougher than your own. How else are they going to be able to move your cowherd in the right direction?

An AI program can be a very cost effective tool to improve the profitability and the genetic base of your cowherd. It will allow you to sample some of the best genetics available without actually owning the bulls. However, if you don't select and use the right bulls, it will be a total waste of time and money.

~ Kit Pharo



Your Source for Grass-Based Genetics

If you are serious about reducing cow size, and if you are serious about increasing thickness and fleshing ability, and if you are serious about calving ease and cow efficiency, and if you are serious about increasing early maturity and grass efficiency, then you have come to the right place. Our goal is to provide the genetics that will help you minimize expenses and maximize profits. We have the Biggest and Best selection of low-maintenance, grass-based genetics in the world!

Moderate Size...

Contrary to popular opinion, it's impossible to produce an efficient, easy-fleshing, 1200-pound cow with bulls that are over a 4 frame score. Although we've seen some 6-frame cows that only weigh 1200 pounds, it's not a pretty sight. They are tall, thin, gutless cows that are very frail looking.

Many people mistakenly believe any cow under a 5-frame is a miniature. They're wrong! Just for the fun of it, we challenge you to take a tape measure and see how tall 48 or 50 inches really is. You'll discover that 3 and 4-frame cows are not really as small as you thought they were. When you add some thickness to a smaller framed cow you have a package that is without equal. Our mature 3 and 4-frame cows weigh 1100 to 1250 pounds. That's big enough!

Frame Score	Mature Cow Hip Height	Mature Bull Hip Height
2	46	50
3	48	52
4	50	54
5	52	56
6	54	58

Calving Ease and Fertility...

If you are concerned about profitability, then calving ease and fertility are the two most important traits you should be selecting for. It doesn't matter how much growth potential a calf has if it is born dead. Dead calves have distressingly low weaning weights. Likewise, open cows produce zilch in the way of weaning weights. True fertility is more a function of fleshing ability than anything else — and fleshing ability is more a function of low maintenance requirements than anything else. Maintenance requirements *must* be met *before* reproduction can take place.

DNA Tested...

In addition to getting an **Igenity DNA Profile** on our bulls, we are now DNA testing our bulls for **A2 Beta Casein** and **TENET®**. A2/A2 beta-casein is a milk protein that improves the nutritional value and digestibility of the cow's milk. An A2/A2 cow can theoretically raise a bigger calf with less milk than A1/A2 or A1/A1 cows. TENET® may prove to be the biggest game changer in the history of the beef industry. Animals that are Certified TENET® have the genetics for the highest level of Beef Tenderness. Compared to other bull producers, we excel in both of these areas. TENET® is a registered trademark of Callipyge Genetics, LLC, used by Pharo Cattle Company™ with permission. All other uses require approval from Callipyge Genetics, LLC.

Grass-Based Genetics...

We have put together the Biggest and Best selection of low-maintenance, grass-based genetics in the world. In addition to Angus, Red Angus and Polled Hereford, we have some South Poll, Mashona and Tarentaise bulls. We also have some Heat-Tolerant Composite bulls and Tarentaise Composite bulls. There are a total of 77 bulls to choose from — with bulls to fit every budget.

Quantity Discounts: 10% Discount on 250 units and 20% Discount on 500+ units

Free Shipping (continental US) on orders of 100 straws or more (savings of \$165). To place an order, call us at **800-311-0995** or send an email to **Bulls@PharoCattle.com**.

~ SIRE INDEX ~

Angus SiresPage

Alamo.....	23
Back 2 Basics.....	16
Bam Bam.....	25
Bench Mark.....	8
Beral of Wye.....	12
Bo Jangles.....	21
Bullseye.....	12
Cha Ching.....	13
Cinch.....	19
Colorado Rebel.....	18
Commissioner.....	8
Daily Double.....	5
Double Your Profit.....	14
Down Town.....	10
East Bound & Down.....	11
EZ Come EZ Go.....	13
Fat Chance.....	21
Fortune.....	19
Galleon.....	15
Gambino.....	29
Gamechanger.....	29
Hayden.....	9
Hickory.....	7
High Five.....	10
High Point.....	16
High Roller.....	18
Hobnob.....	6
Jacks Fork.....	7
Jake.....	17
James Henry.....	14
Jester.....	25
José Cuervo.....	6
Little Big Man.....	9
Little Mo.....	28
Mojo.....	20
Ranger.....	27
Razors Edge.....	23
Riptide.....	26
Ruger.....	22
Sledge Hammer.....	24
Yellowstone.....	27

Lowline Sire Page

Bruce.....	30
------------	----

Red Angus Sires Page

5-Star Gold.....	42
Braveheart.....	39
Cliff.....	36
Crandall.....	43
Durango.....	41
Festus.....	38
Forte.....	40
Gold Mine.....	37
Gold Standard.....	43
Hawkeye.....	35
Hercules.....	38
Herd Quitter.....	31
Hiawatha.....	39
Higgins.....	32
Jango.....	36
Johnny Angel.....	32
Johnny B Special.....	33
Johnny Mizzou.....	34
Parker.....	42
Yazzou.....	35

Polled Hereford Sires Page

Axel.....	44
Clemson.....	45
Jackpot.....	45

Tarentaise Sire Page

Colfax.....	46
-------------	----

Tarentaise Composite Sires Page

Colombo.....	47
Elijah.....	48
Tallahassee.....	47

Heat-Tolerant Sires Page

Callado.....	51
El Jefe.....	53
Generalissimo.....	52
Go Get 'Em.....	53
He-Man.....	51
Hondo.....	50
Tarzan.....	50
Zim Bob.....	49

BLACK ANGUS



Daily Double

Birth Date: 9/27/16 **Reg. # :** 18814203 **A2 Beta Casein:** A2/A2
EPDs: **B.Wt.** -1.4 **W.Wt.** +33 **Y.Wt.** +50 **Milk** +15
Frame: 4.0 (est) **Mature Wt.:** N/A **Price:** \$40/straw \$35/certificate

Our Genetic Predictions

Calving Ease: *****	Udder: *****
Fleshing Ability: *****	Disposition: ****

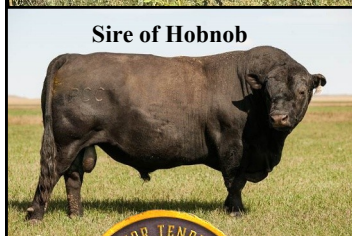
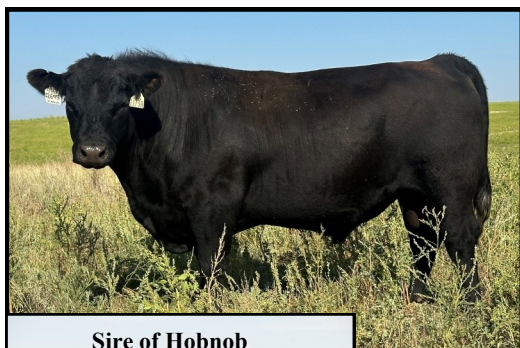


Woodstone J Eric 8715
PCC Pay Day 1065A
PCC Dixie Erica Y1040
PCC D-J Daily Double 2748D
Emblazon CAR 103
CAR Emblazon Maid 312
Dixie Erica CH CAR 109

Woodstone Eric 8063
Woodstone Lady Jane 3275
PCC OH Pledge 2357P
PCC Dixie Erica T7040
OCC Emblazon 854E
Emulous Eulima CAR 4C
OCC Emblazon 854E
Emulous Eborea CAR E02C

Daily Double is our WOW-Factor bull! His sons and daughters are outstanding! He is a Pay Day son that is double-bred Emblazon on the bottom side of his pedigree. Pay Day's sire is an old-Irish-bred bull. Pay Day's dam is a Pledge daughter that we are flushing at 14 years of age. Daily Double has an outstanding Igenity score for tenderness. His calving ease direct EPD is in the top 3% of the Angus breed. His maintenance energy (\$EN) EPD is in the top 2% of the breed. Daily Double has sired some of the very best bulls to go through the PCC™ program. He is co-owned with D Bar J Cattle in Missouri.

BLACK ANGUS



Sire of Hobnob



PCC Hobnob 1173H

PCC Pay Day 1065A
PCC D-J Daily Double 2748D
CAR Emblazon Maid 312

PCC FSR Everclear 1913C
PCC Kimberly E7101
FSR Kimberly B4081

Hobnob

Birth Date: 5/28/20 **Reg. # :** 20048121 **A2 Beta Casein:** A2/A2
EPDs: B.Wt. -1.8 W.Wt. +35 Y.Wt. +60 Milk +18
Frame: 4.0 (est) **Mature Wt.:** N/A **Price:** \$40/straw \$35/certificate

Our Genetic Predictions

Calving Ease: *****	Udder: *****
Fleshing Ability: *****	Disposition: *****

Woodstone J Eric 8715
PCC Dixie Erica Y1040
Emblazon CAR 103
Dixie Erica CH CAR 109

PCC FSR Jake 1950Y
FSR Elkin 948
PCC FSR Rebel Yell 1959Z
CH Kimberly 6105

Hobnob is one of eight outstanding Daily Double sons working in PCC herds. He goes back to Jake and Rebel on the bottom side of his pedigree. Hobnob was a favorite in our 2021 Montana Sale. He is an extremely thick bull with tremendous masculinity, muscling and grass efficiency. His birth weight EPD is in the top 5% of the Angus breed. His \$EN EPD is also in the top 3% of the Angus breed. Hobnob is co-owned with Luis Valles in Mexico and Lost Creek Cattle Company in North Dakota.



Semen is available for export for \$50 (US) per straw.



PCC José Cuervo 1163J

PCC Pay Day 1065A
PCC D-J Daily Double 2748D
CAR Emblazon Maid 312

PCC EZ Come EZ Go 1060C
PCC Modest Rose F8073
PCC Modest Rose A3060

José Cuervo

Birth Date: 5/15/21 **Reg. # :** 20274699 **A2 Beta Casein:** A2/A2
EPDs: B.Wt. -2.9 W.Wt. +33 Y.Wt. +56 Milk +20
Frame: 4.5 (est) **Mature Wt.:** N/A **Price:** \$40/straw \$35/certificate

Our Genetic Predictions

Calving Ease: *****	Udder: *****
Fleshing Ability: *****	Disposition: *****

Woodstone J Eric 8715
PCC Dixie Erica Y1040
Emblazon CAR 103
Dixie Erica CH CAR 109

PCC D-J Easy Money 2739Z
PCC Miss Pine Bank Z2053
PCC Iron Man 049
PCC Modest Rose Y1045

It is too early to know for sure, but we think this bull may prove to be the BEST of the Daily Double sons. We have never seen another bull as masculine or as impressive at 18 months of age. He is out of a great EZ Come EZ Go daughter. José's birth weight EPD is in the top 2% of the Angus breed. His \$EN is also in the top 4% of the breed. Semen is only available in 1/4 cc straws. José Cuervo is co-owned with Glen Wilkinson in Texas and Lost Creek Cattle Company in North Dakota.

BLACK ANGUS

Hickory

Birth Date: 5/27/20 **Reg. # :** 20048119 **A2 Beta Casein:** A2/A2
EPDs: **B.Wt.** -1.2 **W.Wt.** +24 **Y.Wt.** +43 **Milk** +24
Frame: 4.0 (est) **Mature Wt.:** N/A **Price:** \$40/straw \$35/certificate

Our Genetic Predictions

Calving Ease: *****	Udder: *****
Fleshing Ability: *****	Disposition: *****



PCC Hickory 1171H

PCC Pay Day 1065A
PCC D-J Daily Double 2748D
CAR Emblazon Maid 312

PCC FSR Everclear 1913C
PCC Matrix Erica E7116
FSR Matrix Erica B4109

Woodstone J Eric 8715
PCC Dixie Erica Y1040
Emblazon CAR 103
Dixie Erica CH CAR 109
PCC FSR Jake 1950Y
FSR Elkin 948
PCC FSR Back in Black 1999Z
FSR Matrix Erica 817

Hickory is another outstanding son of the great Daily Double bull. His dam goes back to Jake, Rebel and Ruger. He was the high-selling bull in our 2021 Montana Bull Sale. Hickory is a heavy-muscled bull with tremendous thickness. His birth weight EPD is in the top 10% of the Angus breed. His \$EN value is also in the top 1% of the breed. Hickory is co-owned with Furracabad Station in Australia and Lost Creek Cattle Company in North Dakota. **Very limited semen inventory.**



Jacks Fork

Birth Date: 8/25/21 **Reg. # :** 20379288 **A2 Beta Casein:** A2/A2
EPDs: **B.Wt.** -2.0 **W.Wt.** +32 **Y.Wt.** +54 **Milk** +18
Frame: 3.5 (est) **Mature Wt.:** N/A **Price:** \$20/straw \$35/certificate

Our Genetic Predictions

Calving Ease: *****	Udder: *****
Fleshing Ability: *****	Disposition: *****



Pending

PCC D-J Jacks Fork 2771J

PCC Pay Day 1065A
PCC D-J Daily Double 2748D
CAR Emblazon Maid 312

PCC FSR Gator 1869B
PCC EZ Gal 716E
D-J Miss EZ 503C

Woodstone J Eric 8715
PCC Dixie Erica Y1040
Emblazon CAR 103
Dixie Erica CH CAR 109
PCC FSR Jake 1950Y
FSR Bluebell 2007
PCC D-J Easy Money 2739Z
CAR Miss Emblazon 308

Jacks Fork is the latest Daily Double son to enter the PCC program. He goes back to Jake and Easy Money on the bottom side of his pedigree. Jacks Fork has a very impressive 5+ rating for grass efficiency, muscling and hair coat. His calving ease direct EPD is in the top 2% of the Angus breed. Jacks Fork is co-owned with D Bar J Cattle in Missouri. **Limited semen inventory.**

BLACK ANGUS



Bench Mark

Birth Date: 5/14/01 **Reg. # :** 14050287 **A2 Beta Casein:** A2/A2
EPDs: B.Wt. -0.8 W.Wt. +18 Y.Wt. +37 Milk +19
Frame: 3.0 **Mature Wt.:** N/A **Price:** \$15/straw \$35/certificate

Our Genetic Predictions

Calving Ease: *****	Udder: *****
Fleshing Ability: *****	Disposition: ****

PCC Bench Mark L81

DHD Traveler 6807
OCC Broadside 876B
Revolution Rose of R R 9239
Bear of Wye Umf 6591
OCC Juanada 722F
OCC Juanada 728D

QAS Traveler 23-4
Bemindful Maid DHD 0807
PBC 707 1M F0203
Revolution Rose of R R 4064
Lambdin of Wye Umf 6278
Blackbird of Wye Umf 6324
OCC Bullion 822B
OCC Juanada 801B

Bench Mark has had a huge impact on the PCC program! He is a well-proven 5-star calving ease bull that sires calves with extra thickness and fleshing ability. His daughters still have picture-perfect udders in their teens! Bench Mark's dam was a favorite Bear of Wye daughter that we flushed a couple of times. Co-owned with Dale Kostur. **Limited semen inventory.**



Commissioner

Birth Date: 3/10/15 **Reg. # :** 18258662 **A2 Beta Casein:** A2/A2
EPDs: B.Wt. -3.6 W.Wt. +25 Y.Wt. +44 Milk +26
Frame: 4.0 (est) **Mature Wt.:** N/A **Price:** \$40/straw \$35/certificate

Our Genetic Predictions

Calving Ease: *****	Udder: *****
Fleshing Ability: *****	Disposition: ****



Semen is available for export for \$50 (US) per straw.



PCC D-J Commissioner 2715C

OCC Moderator 825M
PCC D-J X-citement 2764X
CM Merle 918E
PCC OH Pledge 2357P
D-J BAX Audrey 123Y
BAX Elizabeth Audrey 519-26

OCC Headliner 661H
OCC Dixie Erica 845K
DHD Traveler 6807
Merle DHD 4844
OCC Homer 650H
CM Merle 863L
BAX Elite 16-4182
BAX Audrey Erica 26-9

Commissioner has been extremely popular in the United States, Canada and Australia. He is an extremely thick bull with tremendous masculinity. His birth weight and calving ease direct EPDs are both in the top 1% of the Angus breed. Commissioner's maintenance energy (SEN) EPD is in the top 3% of the breed. Commissioner is co-owned with the McDaniel Ranch in Montana and D Bar J Cattle in Missouri.

BLACK ANGUS



Hayden

Birth Date: 4/17/10 **Reg. # :** 16761830 **A2 Beta Casein:** A1/A2
EPDs: B.Wt. -1.7 W.Wt. +4 Y.Wt. +14 Milk +13
Frame: 4.0 (est) **Mature Wt.:** N/A **Price:** \$15/straw \$35/certificate

Our Genetic Predictions

Calving Ease: *****	Udder: *****
Fleshing Ability: ****	Disposition: *****

PCC FSR Hayden 2071X

MH Tank 54	Lodge of Wye	Career of Wye
	MH Mina 836	Lorena of Wye
		OCC Broadside 876B
		MO Miss Awesome 3100
	OCC Hunter 928H	OCC Focus 813F
MH Clova Pride 637S		OCC Dixie Erica 960E
MH Clova Pride 3154		MH Rainmaker 127
		Black Tooth Clova 215Y

Hayden is somewhat of an outcross to our program. He is a grandson of Lodge of Wye, who was born in 1963 (62 years ago). Hayden has proven to be an udder improver in the PCC program. He is a 5-star calving ease bull with a birth weight EPD in the top 5% of the Angus breed. He is an extremely low-maintenance bull with an energy EPD in the top 1% of the breed. Co-owned with Seven Spades Cattle Company in Colorado and Flying S Ranch in Kansas.



Little Big Man

Birth Date: 5/25/14 **Reg. # :** 18085038 **A2 Beta Casein:** A2/A2
EPDs: B.Wt. -4.2 W.Wt. +6 Y.Wt. +19 Milk +20
Frame: 2.5 **Mature Wt.:** N/A **Price:** \$20/straw \$35/certificate

Our Genetic Predictions

Calving Ease: *****	Udder: *****
Fleshing Ability: *****	Disposition: *****

PCC SSCC Little Big Man 1740B

MH Tank 54	Lodge of Wye
PCC FSR Hayden 2071X	MH Mina 836
MH Clova Pride 637S	OCC Hunter 928H
	MH Clova Pride 3154
PCC SSCC Mojo 1704X	Dunlouse Jipsey Earl E161
SSCC Lacy 2734Z	SSCC Miss Basin 4705
SSCC Lacy 4716	OCC Keno 681K
	SSCC Lacy J 07B9

Little Big Man is a Hayden son who lives up to his name. He is a powerhouse bull in a small package. Little Big Man was used naturally at PCC Headquarters for several years. He has extreme calving ease with a birth weight EPD and a calving ease direct EPD in the top 1% of the Angus breed. He is an extremely low-maintenance bull with an energy value (\$EN) in the top 2% of the Angus breed. Little Big Man is co-owned with Seven Spades Cattle Company in Colorado.

BLACK ANGUS

High Five

Birth Date: 5/15/20 **Reg. # :** 20048106 **A2 Beta Casein:** A2/A2
EPDs: **B.Wt.** -5.3 **W.Wt.** +7 **Y.Wt.** +26 **Milk** +19
Frame: 3.5 (est) **Mature Wt.:** N/A **Price:** \$15/straw \$35/certificate

Our Genetic Predictions

Calving Ease: *****	Udder: *****
Fleshing Ability: *****	Disposition: *****



PCC High Five 1181H

PCC FSR Hayden 2071X
PCC SSCC Little Big Man
SSCC Lacy 2734Z

PCC Bench Mark L81
PCC Modest Eileen E7070
PCC Modest Eileen S6023

MH Tank 54
MH Clova Pride 637S
PCC SSCC Mojo 1704X
SSCC Lacy 4716

OCC Broadside 876B
OCC Juanada 722F
BAX Elite 16-4182
PCC Modest Eileen 281

High Five is a Little Big Man son out of a very nice Bench Mark daughter. His birth weight and calving ease direct EPDs are both in the top 1% of the Angus breed. He is an extremely low-maintenance bull with an energy value (\$EN) in the top 2% of the Angus breed. High Five is co-owned with Greg Jones in Colorado.



Semen is available for export for \$20 (US) per straw.

Down Town

Birth Date: 5/13/14 **Reg. # :** 18085047 **A2 Beta Casein:** A2/A2
EPDs: **B.Wt.** -1.8 **W.Wt.** +25 **Y.Wt.** +48 **Milk** +10
Frame: 4.0 (est) **Mature Wt.:** N/A **Price:** \$15/straw \$35/certificate

Our Genetic Predictions

Calving Ease: *****	Udder: *****
Fleshing Ability: ****	Disposition: *****

PCC FSR Hayden 2071X	MH Tank 54	Lodge of Wye
SSCC Idaho Lady 0740X	MH Clova Pride 637S	MH Mina 836
SSCC Idaho Lady 8733U	PCC OH Pledge 2357P	OCC Hunter 928H
		MH Clova Pride 3154
		OCC Homer 650H
		CM Merle 863L
		Mon Reposa Rito (Idaho)
		SSCC Blackcap Lady 200

Down Town was the leadoff bull in our 2015 Fall Bull Sale. He is a Hayden son out of a Pledge daughter. Down Town produces thick, deep-bodied, early-maturing sons and daughters. He is a 5-star calving ease bull with a birth weight EPD in the top 5% of the Angus Breed. He is an extremely low-maintenance bull with an energy EPD in the top 1% of the Angus breed. Down Town is co-owned with Seven Spades Cattle Company in Colorado, Bruns Angus in Nebraska and D Bar J Cattle in Missouri.

BLACK ANGUS



East Bound & Down

Birth Date: 8/29/17 **Reg. # :** 19158643 **A2 Beta Casein:** A2/A2

EPDs: **B.Wt.** -1.3 **W.Wt.** +12 **Y.Wt.** +28 **Milk** +14

Frame: 3.5 (est) **Mature Wt.:** N/A **Price:** \$20/straw \$35/certificate

Our Genetic Predictions

Calving Ease: *****	Udder: *****
Fleshing Ability: *****	Disposition: *****

PCC FSR Hayden 2071X	MH Tank 54
PCC SSCC Down Town 1719B	MH Clova Pride 637S
SSCC Idaho Lady 0740X	PCC OH Pledge 2357P
PCC D-J East Bound & Down 2752E	SSCC Idaho Lady 8733U
PCC Pay Day 1065A	Woodstone J Eric 8715
D-J Miss Payday 555C	PCC Dixie Erica Y1040
D-J Miss Emblazon 223Z	PCC Scat 1000W
	CAR Miss Emblazon 308

East Bound & Down is our favorite Down Town son. With Hayden, Pledge and Idaho on top and with Pay Day, Scat and Emblazon on the bottom, this bull's pedigree is stacked for maternal greatness. His phenotype matches his genotype. He is a heavy-muscled bull that stays pig-fat year-round! East Bound's birth weight EPD is in the top 10% of the Angus breed. His \$EN EPD is in the top 1% of the breed. East Bound is co-owned with D Bar J Cattle in Missouri.

BLACK ANGUS



Beral of Wye

Birth Date: 1/29/06 Reg. #: 15600072 A2 Beta Casein: A1/A2
 EPDs: B.Wt. -4.0 W.Wt. +8 Y.Wt. +14 Milk +17
 Frame: 3.0 Mature Wt.: N/A Price: \$40/straw \$35/certificate

Our Genetic Predictions

Calving Ease: **** Udder: *****
 Fleshing Ability: **** Disposition: *****

SOLD OUT



Beral of Wye UMF 9288

Manning of Wye
 Milady of Wye
 Bear of Wye UMF 6591
 Alexina of Wye UMF 6437
 Leonid of Wye
 Alexina of Wye UMF 6749
 Bolton of Wye UMF 6045
 Blackbird of Wye UMF 5362

After using him AI for a couple of years, we purchased a controlling interest in Beral of Wye in the summer of 2011. He has had a tremendous impact on our program. Beral is intensely linebred. He traces back to Gaird of Dalmeny, the foundation sire of the Wye program, 186 times. His dam produced until she was age 14. Beral's birth weight, calving ease direct and \$EN EPDs are all in the top 1% of the Angus breed. **Very limited semen inventory.**



Bullseye

Birth Date: 5/21/14 Reg. #: 18058333 A2 Beta Casein: A1/A2
 EPDs: B.Wt. -2.5 W.Wt. +31 Y.Wt. +52 Milk +22
 Frame: 4.0 (est) Mature Wt.: N/A Price: \$40/straw \$35/certificate

Our Genetic Predictions

Calving Ease: ***** Udder: *****
 Fleshing Ability: ***** Disposition: *****



PCC Bullseye 1057B

Alap of Wye UMF 8329
 Beral of Wye UMF 9288
 Blackbird of Wye UMF 7620
 PCC OH Pledge 2357P
 PCC Dixie Erica Y1043
 PCC Dixie Erica

Manning of Wye
 Alexina of Wye UMF 6968
 Angwin of Wye UMF 7097
 Blackbird of Wye UMF 6982
 OCC Homer 650H
 CM Merle 863L
 Emulation N Bar 5522
 PCC Dixie Erica S6046

Bullseye is right on target in the PCC program. He is a 20-star Beral of Wye son! Bullseye is an extremely masculine, heavy-muscled Beral son out of a favorite Pledge daughter. He stays in great shape year-round. Bullseye's birth weight EPD is in the top 2% of the Angus breed. His maintenance energy (\$EN) EPD is in the top 4% of the breed. He is co-owned with Landrigan Livestock and Shirley Crouch, both in Nebraska.

BLACK ANGUS



EZ Come EZ Go

Birth Date: 5/15/15 **Reg. # :** 18421535 **A2 Beta Casein:** A2/A2
EPDs: **B.Wt.** -1.2 **W.Wt.** +28 **Y.Wt.** +47 **Milk** +19
Frame: 4.0 (est) **Mature Wt.:** N/A **Price:** \$40/straw \$35/certificate

Our Genetic Predictions

Calving Ease: *****	Udder: *****
Fleshing Ability: ****	Disposition: *****



Semen is available for export for \$50 (US) per straw.



PCC EZ Come EZ Go 1060C

PCC Low Input 1052W
PCC D-J Easy Money 2739Z
D-J Miss Merle 033X

Beral of Wye UMF 9288
PCC Miss Pine Bank Z2053
PCC Miss Pine Bank W9051

Beral of Wye UMF 9288
PCC Eman Sheman 227
OCC Moderator 825M
CM Merle 918E

Alap of Wye UMF 8329
Blackbird of Wye UMF 7620
PCC TQ Patton N6T
PCC Miss Pine Bank T7050

EZ Come EZ Go was the leadoff bull in the 2016 Fall Sale in Nebraska. We have seen some very impressive EZ calves here at PCC Headquarters, in Texas, in Missouri and in Australia. He is double-bred to Beral of Wye. He is an extremely masculine, heavy-muscled bull with 5-star calving ease. His \$EN EPD is in the top 2% of the breed. EZ Come EZ Go is co-owned with Furracabad Station in Australia.

Cha Ching

Birth Date: 9/5/15 **Reg. # :** 18493345 **A2 Beta Casein:** A2/A2
EPDs: **B.Wt.** -2.9 **W.Wt.** +30 **Y.Wt.** +53 **Milk** +25
Frame: 4.0 (est) **Mature Wt.:** N/A **Price:** \$10/straw \$35/certificate

Our Genetic Predictions

Calving Ease: *****	Udder: ****
Fleshing Ability: *****	Disposition: *****

PCC D-J Cha Ching 2770C

PCC Low Input 1052W
PCC D-J Easy Money 2739Z
D-J Miss Merle 033X

PCC OH Overhaul 2335R
D-J Merle O 117Y
OH Merle S6151

Beral of Wye UMF 9288
PCC Eman Sheman 227
OCC Moderator 825M
CM Merle 918E

OH West Plains 3510
OH Georgina 3563
MVL 854E Emblazon 8P
CM Merle 734H

Cha Ching was the leadoff Angus bull in the 2017 Missouri Sale. He is another thick, heavy-muscled Easy Money son. He has a 5++ rating for fleshing ability. Cha Ching has an excellent Igenity score for tenderness. His birth weight EPD is in the top 2% of the Angus breed. Cha Ching's maintenance energy (\$EN) is in the top 5%. He is co-owned with Bruns Angus in Nebraska and D Bar J Cattle in Missouri.

BLACK ANGUS

James Henry

Birth Date: 8/29/21 **Reg. # :** 20379283 **A2 Beta Casein:** A2/A2
EPDs: **B.Wt.** -3.5 **W.Wt.** +20 **Y.Wt.** +40 **Milk** +21
Frame: 4.0 (est) **Mature Wt.:** N/A **Price:** \$40/straw \$35/certificate

Our Genetic Predictions

Calving Ease: *****	Udder: *****
Fleshing Ability: *****	Disposition: *****



PCC D-J James Henry 2749J

PCC Low Input 1052W
PCC D-J Conquistador 2707C
D-J Birch Cat 252Z
PCC FSR Gator 1869B
PCC D-J Erica 794E
D-J Erica 548C

Beral of Wye UMF 9288
PCC Eman Sheman 227
PCC Scat 1000W
KT Irvington 2895 384 1959
PCC FSR Jake 1950Y
FSR Bluebell 2007
PCC OH Pledge 2357P
OH Erica Lassie S6153

James Henry was the high-selling bull in our 2023 Missouri Bull Sale. He is a Conquistador son that goes back to Pledge twice on the bottom side of his pedigree. James Henry is a 20-star bull that we have high hopes for! His birth weight EPD is in the top 1% of the Angus breed. His \$EN EPD is also in the top 1%. James Henry has a 5+ hair coat! He is co-owned with D Bar J Cattle in Missouri and Stanley Cattle Company in Whipple, Ohio.



Sire of Double Your Profit

Double Your Profit

Birth Date: 9/18/16 **Reg. # :** 18814205 **A2 Beta Casein:** A2/A2
EPDs: **B.Wt.** -5.2 **W.Wt.** +10 **Y.Wt.** +18 **Milk** +22
Frame: 4.0 (est) **Mature Wt.:** N/A **Price:** \$15/straw \$35/certificate

Our Genetic Predictions

Calving Ease: *****	Udder: *****
Fleshing Ability: *****	Disposition: *****

PCC D-J Double Your Profit 2745D

Beral of Wye UMF 9288
PCC Low Input 1052W
PCC Eman Sheman 227
PCC Augustus 1010T
D-J Ida Blackcap 108Y
Blackcap 233 of SW40

Alap of Wye UMF 8329
Blackbird of Wye UMF 7620
OCC Emancipate 889E
Tiedale Lass 92-741
Mon Reposa Rito (Idaho)
CM Blackbird 724M
Forgeman of Wye UMF 8727
Blackcap Johnnie 233 of SW40

Double Your Profit is a Low Input son. He goes back to some Wye breeding on both sides of his pedigree. He is a very thick, heavy-muscled, masculine bull. Double Your Profit has an outstanding Igenity score for tenderness. His birth weight EPD and calving ease direct EPDs are both in the top 1% of the Angus breed. Double Your Profit's maintenance energy (\$EN) EPD is also in the top 1% of the breed. He is co-owned with D Bar J Cattle in Missouri.

BLACK ANGUS



Galleon

Birth Date: 9/4/19 **Reg. # :** 19771641 **A2 Beta Casein:** A2/A2
EPDs: **B.Wt.** -3.8 **W.Wt.** +22 **Y.Wt.** +48 **Milk** +22
Frame: 3.0 (est) **Mature Wt.:** N/A **Price:** \$40/straw \$35/certificate

Our Genetic Predictions

Calving Ease: *****	Udder: *****
Fleshing Ability: *****	Disposition: *****



PCC D-J Galleon 2760G

OCC Homer 650H
PCC OH Pledge 2357P
CM Merle 863L

PCC D-J Commissioner 2715C
D-J Ellen Belle 706E
D-J Annabelle 417B

OCC Focus 813F
OCC Dixie Erica 816B
OCC Joker 620J
CM Merle 918E

PCC D-J X-citement 2764X
PCC D-J BAX Audrey 123Y
PCC Scat 1000W
D-J Annabel 032X

Galleon is a very impressive Pledge son. Pledge has produced many impressive sons for the PCC program. His daughters have been beautiful, long lasting cows with excellent feet and udders. Galleon's dam is a Commissioner daughter that goes back to Bench Mark. Galleon's birth weight and calving ease direct EPDs are both in the top 1% of the Angus breed. His \$EN EPD is in the top 2%. Galleon is co-owned with D Bar J Cattle in Missouri.

BLACK ANGUS



Pictured at ten years of age

High Point

Birth Date: 6/1/11 **Reg. # :** 17195302 **A2 Beta Casein:** A2/A2
EPDs: **B.Wt.** -3.1 **W.Wt.** +32 **Y.Wt.** +49 **Milk** +19
Frame: 4.5 (est) **Mature Wt.:** N/A **Price:** \$15/straw \$35/certificate

Our Genetic Predictions

Calving Ease: *****	Udder: *****
Fleshing Ability: *****	Disposition: ****

PCC High Point 1054Y

OCC Homer 650H	OCC Focus 813F
PCC OH Pledge 2357P	OCC Dixie Erica 816B
CM Merle 863L	OCC Joker 620J
	CM Merle 918E
Emulation N Bar 5522	Emulation 31
PCC Dixie Erica U8031	Ankony 8F78 Lass 8F275
PCC Dixie Erica P411	OCC Emancipate 889E
	PCC Modest Dixie 209

High Point is another great Pledge son that has left his mark on the PCC program. His dam was our very best Emulation 5522 daughter. She produced a calf every year for 12 years. High Point was still working at 12 years of age. His birth weight and calving ease direct EPDs are both in the top 2% of the Angus breed. His \$EN EPD is also in the top 2%. High Point is a guaranteed udder improver! He is co-owned with Bruns Angus in Nebraska.



Back 2 Basics

Birth Date: 5/15/15 **Reg. # :** 18421533 **A2 Beta Casein:** A2/A2
EPDs: **B.Wt.** -1.1 **W.Wt.** +26 **Y.Wt.** +51 **Milk** +17
Frame: 4.0 (est) **Mature Wt.:** N/A **Price:** \$30/straw \$35/certificate

Our Genetic Predictions

Calving Ease: *****	Udder: *****
Fleshing Ability: ****	Disposition: *****



PCC Back 2 Basics 1056C

OCC Homer 650H	OCC Focus 813F
PCC OH Pledge 2357P	OCC Dixie Erica 816B
CM Merle 863L	OCC Joker 620J
	OCC CM Merle 918E
Beral of Wye UMF 9288	Alap of Wye UMF 8329
PCC Dixie Erica A3053	Blackbird of Wye UMF 7620
PCC Dixie Erica W9055	PCC Bench Mark L81
	BAA Dixie Erica 4103A

Back 2 Basics is a Pledge son that goes back to Beral of Wye and Bench Mark on the bottom side of his pedigree. He is a very thick, heavy-muscled bull. Back 2 Basic's birth weight EPD is in the top 10% of the Angus breed. He is an extremely low-maintenance bull with a \$EN EPD in the top 1% of the Angus breed. Back 2 Basics is co-owned with Furracabad Station in Australia.

BLACK ANGUS



Jake

Birth Date: 3/11/11 **Reg. # :** 17085993 **A2 Beta Casein:** A2/A2
EPDs: **B.Wt.** -3.7 **W.Wt.** +29 **Y.Wt.** +56 **Milk** +21
Frame: 4.0 (est) **Mature Wt.:** N/A **Price:** \$40/straw \$35/certificate

Our Genetic Predictions

Calving Ease: *****	Udder: *****
Fleshing Ability: *****	Disposition: *****



PCC FSR Jake 1950Y

OCC Homer 650H
PCC OH Pledge 2357P
CM Merle 863L

JAD Matrix M604
JAD Queen Mother S35
JAD Queen Mother 947

OCC Focus 813F
OCC Dixie Erica 816B
OCC Joker 620J
CM Merle 918E
OCC Emblazon 854E
JAD Annie 6604
Sitz Traveler 5556
JAD Queen Mother 5653

Jake has already made his mark in our program. Eight sons have been used in PCC cooperative herds. Jake is an extreme calving ease bull. His calving ease direct and birth weight EPDs are both in the top 1% of the Angus breed. Jake's calving ease maternal EPD is in the top 3% of the breed. His maintenance energy (\$EN) is also in the top 4% of the breed. Jake is co-owned with Flying S Ranch in Kansas.

BLACK ANGUS



PCC High Roller 1051Y

OCC Homer 650H
PCC OH Pledge 2357P
CM Merle 863L
Bear of Wye UMF 6591
SCC MS Bear 2261
SCC MS Broadside 044

OCC Focus 813F
OCC Dixie Erica 816B
OCC Joker 620J
OCC CM Merle 918E
Lambdin of Wye UMF 6278
Blackbird of Wye UMF 6324
OCC Broadside 876B
SCC MS Emulation 628

High Roller

Birth Date: 5/21/11 **Reg. # :** 17195299 **A2 Beta Casein:** A2/A2
EPDs: B.Wt. -1.0 W.Wt. +33 Y.Wt. +56 Milk +21
Frame: 4.5 (est) **Mature Wt.:** N/A **Price:** \$30/straw \$35/certificate

Our Genetic Predictions

Calving Ease: ****	Udder: *****
Fleshing Ability: ****	Disposition: *****

High Roller is a Pledge son out of a favorite Bear of Wye daughter that produced 14 calves without missing. He will produce long-lasting, fertile cows with great udders. High Roller's birth weight EPD is in the top 10% of the Angus breed. He is an extremely low-maintenance bull with a \$EN EPD in the top 3% of the breed. High Roller also has outstanding Igenity scores for marbling and tenderness. He is co-owned with Ohio Land and Cattle.



PCC Colorado Rebel 1057A

OCC Homer 650H
PCC MH Rebel 2009R
MH Beauty 148
Beral of Wye UMF 9288
PCC Dixie Erica Y1047
PCC Dixie Erica P411

OCC Focus 813F
OCC Dixie Erica 816B
OCC Emblazon 854E
MH Beauty 907
Alap of Wye UMF 8329
Blackbird of Wye UMF 7620
OCC Emancipate 889E
PCC Modest Dixie 209

Colorado Rebel

Birth Date: 5/8/13 **Reg. # :** 17741052 **A2 Beta Casein:** A2/A2
EPDs: B.Wt. -3.5 W.Wt. +18 Y.Wt. +45 Milk +25
Frame: 4.0 (est) **Mature Wt.:** N/A **Price:** \$30/straw \$35/certificate

Our Genetic Predictions

Calving Ease: *****	Udder: *****
Fleshing Ability: *****	Disposition: *****

Colorado Rebel is a very impressive Rebel son out of a Beral of Wye daughter that is out of our favorite P411 cow. He has an outstanding Igenity score for tenderness. He combines extreme thickness and fleshing ability with extreme calving ease. Colorado Rebel's birth weight EPD is in the top 1% of the Angus breed. His maintenance energy (\$EN) EPD is in the top 5% of the breed. Colorado Rebel is co-owned with Bruns Angus in Nebraska.

BLACK ANGUS



Fortune

Birth Date: 4/1/16 **Reg. # :** 18543272 **A2 Beta Casein:** A2/A2
EPDs: B.Wt. -2.3 W.Wt. +19 Y.Wt. +39 Milk +31
Frame: 3.5 (est) **Mature Wt.:** N/A **Price:** \$40/straw \$35/certificate

Our Genetic Predictions

Calving Ease: *****	Udder: *****
Fleshing Ability: *****	Disposition: *****



Semen is available in Australia for \$50 (US) per straw.



PCC OH Pledge 2357P
PCC FSR Jake 1950Y
JAD Queen Mother S35
PCC FSR Fortune 3599D

PCC FSR Wolverine 1943X
FSR Elkin 3157
FSR Elkin 948

OCC Homer 650H
CM Merle 863L
JAD Matrix M604
JAD Queen Mother 947

PCC MH Rebel 2009R
BR Missy 808 020 231
PCC MH Rebel 2009R
FSR Miss Five Star 770

Fortune is a very heavy-muscled Jake son with extreme calving ease and 5+ fleshing ability. He was in the top 5% of his contemporary group for grass efficiency and early maturity. Fortune's maintenance energy (\$EN) EPD is in the top 4% of the Angus breed. His birth weight EPD is in the top 3%. Fortune also has an outstanding Igenity score for tenderness. He is co-owned with Flying S Ranch in Kansas and Furracabad Station in Australia.



Cinch

Birth Date: 4/14/12 **Reg. # :** 17380927 **A2 Beta Casein:** A2/A2
EPDs: B.Wt. -2.6 W.Wt. +34 Y.Wt. +62 Milk +20
Frame: 4.0 (est) **Mature Wt.:** N/A **Price:** \$40/straw \$35/certificate

Our Genetic Predictions

Calving Ease: *****	Udder: ****
Fleshing Ability: *****	Disposition: ****



PAR Dakota Homer 95
PCC TQ Science 1843W
TQ Barbara 80R
PCC BA Cinch 2318Z

OCC Sampson 876S
BA Sampson 935V
V-Bar Janet 561

OCC Homer 650H
PAR Traveling Broadside 563
Feltens V Filibuster 6
TQ Band Lassie 32M
OCC Emblazon 854E
OCC Juanada 710K
V Bar Traveler 717G
Jannet of RR 770B

Cinch worked very well on a high-elevation ranch in the Colorado mountains for seven years. He has an outstanding Igenity score for tenderness. His birth weight and calving ease direct EPDs are both in the top 2% of the Angus breed. Cinch's maintenance energy (\$EN) EPD is in the top 3% of the Angus breed. He is co-owned with Pulliam Angus Ranch in Colorado and Bruns Angus in Nebraska.

BLACK ANGUS



Mojo

Birth Date: 4/18/10 **Reg. # :** 16777360 **A2 Beta Casein:** A2/A2
EPDs: **B.Wt.** -4.4 **W.Wt.** +14 **Y.Wt.** +15 **Milk** +36
Frame: 3.0 **Mature Wt.:** N/A **Price:** \$15/straw \$35/certificate

Our Genetic Predictions

Calving Ease: *****	Udder: ****
Fleshing Ability: *****	Disposition: *****

PCC SSCC Mojo 1704X	Betro of Classlochie	Rockie of Woodview
	Dunlouse Jipsey Earl E161	Bethrothed 19 of Classiochie
	Dunlouse Jipsey Clova C095	Bernardo of Classlochie
		Cannahars Jipsey Yoko Y485
	Mon Reposa Rito (Idaho)	Mon Reposa Shandar
	SSCC Miss Basin 4705	Lawsons Rim Rock 606-4003
	SSCC Miss Basin 191	OCC Emancipate 889E
		SSCC Miss Basin 1FT7

Mojo's sire, Jipsey Earl, is a 100% Scottish-bred bull that has worked well in our program. Mojo's dam is the easiest-fleshing Idaho daughter we have ever seen. Mojo combines extreme calving ease with tremendous thickness and eye appeal. His birth weight and calving ease direct EPDs are both in the top 1/2 of 1% of the Angus breed. His \$EN value is in the top 5% of the breed. Mojo is co-owned with Seven Spades Cattle Company in Colorado.

BLACK ANGUS



Bo Jangles

Birth Date: 2/23/18 **Reg. # :** 19296913 **A2 Beta Casein:** A2/A2
EPDs: B.Wt. -4.5 W.Wt. +18 Y.Wt. +29 Milk +33
Frame: 3.5 (est) **Mature Wt.:** N/A **Price:** \$40/straw \$35/certificate

Our Genetic Predictions

Calving Ease: *****	Udder: *****
Fleshing Ability: *****	Disposition: *****



PCC SSCC Bo Jangles 1702F

Dunlouse Jipsey Earl E161
PCC SSCC Mojo 1704X
SSCC Miss Basin 4705
SAV Fame 9312
SSCC Tiedale Lass 4706B
SSCC Lass Backer 8716U

Betro of Classlochie
Dunlouse Jipsey Clova C095
Mon Reposa Rito (Idaho)
SSCC Miss Basin 191
SAF Fame
SAV Juana 6232
CM Morgan 687M
SSCC Lass 4754

Bo Jangles may be one of those once-in-a-lifetime bulls. He is a Mojo son that combines extreme thickness with extreme calving ease. His birth weight and calving ease direct EPDs are both in the top 1/2 of 1% for the Angus breed. He is an extremely early-maturing bull with 5+ grass efficiency. He ties with Cha Ching, Conquistador and Mojo for the highest Igenity score for Heifer Pregnancy (fertility). Bo Jangles is co-owned with Seven Spades Cattle Company in Colorado and Furracabad Station in Australia.



Fat Chance

Birth Date: 3/29/18 **Reg. # :** 19300750 **A2 Beta Casein:** A2/A2
EPDs: B.Wt. +1.7 W.Wt. +40 Y.Wt. +76 Milk +31
Frame: 4.0 (est) **Mature Wt.:** N/A **Price:** \$20/straw \$35/certificate

Our Genetic Predictions

Calving Ease: *****	Udder: *****
Fleshing Ability: *****	Disposition: *****



PCC FSR Fat Chance 2013F

Sinclair Timeless 8BA4
PCC FSR Razz 1803B
Sinclair Eileen 2JP5 0Z2
PCC FSR Bud 2071B
FSR Clova Pride D6342
FSR Clova Pride B454

Sinclair In Time 6BT39
Sinclair Blackbird 2P8 7079
Dunlouse Jipsey Earl E161
Sinclair Eileen 0Z2 6J5
PCC Iron Man 049
FSR Elkine 242
Sinclair Timeless 8BA4
Sinclair C Pride 2PU17 8FC21

Fat Chance is a relatively new addition to our lineup. Three-fourths of his pedigree is a total outcross to the PCC program. We expect him to bring in some hybrid vigor. He is an early-maturing bull — with 5-star grass efficiency. Fat Chance has an Igenity score for calving ease of 8 out of 10. We are very confident in giving him 4-star calving ease. His DNA profile also indicates he will sire daughters with tremendous fertility. He is co-owned with Flying S Ranch in Kansas and Enrique Valles in Mexico.

BLACK ANGUS



Ruger

Birth Date: 5/12/07 **Reg. # :** 16101291 **A2 Beta Casein:** A2/A2
EPDs: **B.Wt.** -1.0 **W.Wt.** +37 **Y.Wt.** +54 **Milk** +22
Frame: 3.5 (est) **Mature Wt.:** N/A **Price:** \$40/straw \$35/certificate

Our Genetic Predictions

Calving Ease: *****	Udder: *****
Fleshing Ability: *****	Disposition: *****



PCC Ruger 1042T

OCC Anchor 771A
OCC Emancipate 889E
Dixie Erica of RR 4309

PCC Iron Man 049
PCC Queen 409
PCC Modest Queen 248

DHD Traveler 6807
OCC Juanada 709V
Shoshone Vantage JB23
Dixie Erica of RR 6124

DHLL Night Man
OCC Revolution Rose 802F
Moderator PC 4034
OCC Queen 868E

Ruger is a well-proven Emancipate son. His dam was a favorite Iron Man daughter that only weighed 1000 pounds. Ruger has left his mark in the PCC program. He is the sire of Real McCoy. Ruger has an Igenity DNA score of 9 out of 10 for calving ease. His birth weight EPD is in the top 10% of the Angus breed. He is a very low-maintenance bull with a \$EN energy value in the top 2% of the breed. Ruger is co-owned with the Flying S Ranch in Kansas. **Limited semen inventory.**

BLACK ANGUS



Pictured at three years of age

Alamo

Birth Date: 5/16/06 **Reg. # :** 15611939 **A2 Beta Casein:** A2/A2
EPDs: **B.Wt.** -1.0 **W.Wt.** +20 **Y.Wt.** +31 **Milk** +18
Frame: 3.5 **Mature Wt.:** N/A **Price:** \$10/straw \$35/certificate

Our Genetic Predictions

Calving Ease: *****	Udder: *****
Fleshing Ability: *****	Disposition: *****

PCC Alamo 1125S

OCC Anchor 771A
OCC Emancipate 889E
Dixie Erica of R R 4309

Bear of Wye Umf 6591
OCC Juanada 722F
OCC Juanada 728D

DHD Traveler 6807
OCC Juanada 709V
Shoshone Vantage JB23
Dixie Erica of R R 6124

Lambdin of Wye Umf 6278
Blackbird of Wye Umf 6324
OCC Bullion 822B
OCC Juanada 801B

This is an Emancipate son that doesn't seem to have any holes. His sons and daughters perform very well in the PCC program. Alamo is the result of flushing a favorite Bear of Wye daughter to Emancipate. His dam produced until she was 10 years old, when she was found dead late in the summer (lightning). Alamo's birth weight EPD is in the top 10% of the Angus breed. His \$EN value is in the top 1% of the breed. Co-owned with 4-P Farms in Colorado.



Sire of Razors Edge

Razors Edge

Birth Date: 3/15/21 **Reg. # :** 20088534 **A2 Beta Casein:** A2/A2
EPDs: **B.Wt.** -1.4 **W.Wt.** +44 **Y.Wt.** +71 **Milk** +22
Frame: 4.0 (est) **Mature Wt.:** N/A **Price:** \$40/straw \$35/certificate

Our Genetic Predictions

Calving Ease: ****	Udder: *****
Fleshing Ability: *****	Disposition: *****



PCC FSR Razors Edge 1830J

PCC Ruger 1042T
PCC FSR Real McCoy 1918X
FSR Miss Rebel 826

PCC Ruger 1042T
FSR Jilt D634
TQ Jilt 02Z

OCC Emancipate 889E
PCC Queen 409
PCC MH Rebel 2009R
FSR Miss Husker Legend 660

OCC Emancipate 889E
PCC Queen 409
PAR Dakota Homer 95
TQ Jilt 34P

Razors Edge is a Real McCoy son that is double-bred to Ruger. He is the result of a brother/sister mating — linebred for locked-in maternal greatness! He was the leadoff bull in our 2022 Colorado Spring Sale. Razors Edge has extreme muscling and thickness. His calving ease direct EPD is in the top 4% of the Angus breed. His \$EN value is in the top 2% of the breed. Razors Edge is co-owned with Flying S Ranch in Kansas and Storm Casper in Colorado.

BLACK ANGUS



Sledge Hammer

Birth Date: 2/28/18 **Reg. # :** 19158189 **A2 Beta Casein:** A2/A2

EPDs: **B.Wt.** -5.5 **W.Wt.** +34 **Y.Wt.** +54 **Milk** +26

Frame: 3.0 (est) **Mature Wt.:** N/A **Price:** \$20/straw \$35/certificate

Our Genetic Predictions

Calving Ease: *****

Udder: *****

Fleshing Ability: *****

Disposition: *****

PCC FSR Real McCoy 1918X	PCC Ruger 1042T
PCC FSR Cold Fire 1892C	FSR Miss Rebel 826
FSR Miss Rebel Star 864	PCC MH Rebel 2009
PCC FSR Sledge Hammer 1923F	FSR Leprechaun 649
MH Tank 54	Lodge of Wye
MH Prudence 727	MH Mina 836
MH Prudence 315	OCC Homer 650H
	MH Prudence 120

Sledge Hammer is a Real McCoy grandson with extreme calving ease. His birth weight and calving ease direct EPDs are both in the top 1/2 of 1% of the Angus breed. His \$EN value is in the top 3% of the breed. Sledge Hammer's sons and daughters are very impressive! He is co-owned with Flying S Ranch in Kansas.

BLACK ANGUS



Bam Bam

Birth Date: 3/29/20 **Reg. # :** 19911511 **A2 Beta Casein:** A2/A2
EPDs: B.Wt. -2.2 W.Wt. +52 Y.Wt. +80 Milk +21
Frame: 4.0 (est) **Mature Wt.:** N/A **Price:** \$20/straw \$35/certificate

Our Genetic Predictions

Calving Ease: *****	Udder: *****
Fleshing Ability: *****	Disposition: *****



PCC FSR Bam Bam 1920H

PCC OAO Amarillo 1237Z	PCC Del Rio 1031R
PCC FSR Ricochet 1935C	OAO Jean 8403
FSR Missy A3074	PCC FSR Real McCoy 1918X
	FSR Miss Rebel Star 880
PCC Ruger 1042T	OCC Emancipate 889E
FSR Dixie Erica A3071	PCC Queen 409
FSR Matrix Erica 817	OCC Homer 650H
	JAD Annie S24

Bam Bam is an extremely thick and easy-fleshing bull. His sire, Ricochet, goes back to two of our all-time favorite Angus bulls — Real McCoy and Magua. Bam Bam's birth weight EPD is in the top 3% of the Angus breed. His SEN EPD is in the top 5%. Bam Bam is co-owned with Seven Spades Cattle Company in Colorado and Flying S Ranch in Kansas.



Sire of Jester

Jester

Birth Date: 5/10/17 **Reg. # :** 19026311 **A2 Beta Casein:** A2/A2
EPDs: B.Wt. -0.8 W.Wt. +37 Y.Wt. +69 Milk +19
Frame: 4.0 (est) **Mature Wt.:** N/A **Price:** \$30/straw \$35/certificate

Our Genetic Predictions

Calving Ease: ****	Udder: *****
Fleshing Ability: *****	Disposition: *****



PCC BA Jester 2354E

PCC FSR Real McCoy 1918X	PCC Ruger 1042T
PCC FSR Total Package 1925A	FSR Miss Rebel 826
JAD Barbara S08	JAD Matrix M604
	JAD Miss Barbara 5652
PCC ICE Rebel Stout 2952X	PCC MH Rebel 2009R
BA Katy 426	BAA Barbara 5225A
KR Bando 602P-70-57	FCC Pacesetter 602P
	KR Bando 645L 57 115

Jester is a Real McCoy grandson that goes back to Rebel on both sides of his pedigree. He was one of our favorite bulls in the 2018 Nebraska Bull Sale. Jester's birth weight and calving ease direct EPDs are both in the top 15% of the Angus breed. His maintenance energy EPD is in the top 4% of the Angus breed. Jester is co-owned with 1883 Ranch and Bruns Angus, both in Nebraska.

BLACK ANGUS



Riptide

Birth Date: 3/21/16 **Reg. # :** 18660308 **A2 Beta Casein:** A2/A2
EPDs: **B.Wt.** -4.6 **W.Wt.** +13 **Y.Wt.** +39 **Milk** +24
Frame: 3.5 (est) **Mature Wt.:** N/A **Price:** \$40/straw \$35/certificate

Our Genetic Predictions

Calving Ease: *****	Udder: ****
Fleshing Ability: *****	Disposition: *****



PCC FSR Riptide 3598D

PCC FSR Real McCoy 1918X
PCC FSR Skywalker 1997A
FSR Miss Rebel 754

PCC Colorado Hunter 1062P
MH Clova Pride 20
MH Clova Pride 105

PCC Ruger 1042T
FSR Miss Rebel 826
PCC MH Rebel 2009R
4-P Rolla R522

Moderator PC 4034
PCC Dixie Erica 0122
Octoraro Rito 503
Black Tooth Clova 215Y

Riptide is a Real McCoy grandson that has been working in a high-elevation PCC cowherd in Colorado. He has a PAP score of 37. Riptide sires calves with tremendous thickness, muscling and fleshing ability. His sons have averaged 38 on their PAP scores. Riptide's birth weight EPD is in the top 1% of the Angus breed. His \$EN EPD is in the top 4% of the breed. Riptide is co-owned with Pulliam Angus Ranch in Colorado and Flying S Ranch in Kansas. **Limited semen inventory.**

BLACK ANGUS



Ranger

Birth Date: 4/28/13 **Reg. # :** 17788613 **A2 Beta Casein:** A2/A2
EPDs: **B.Wt.** +0.0 **W.Wt.** +35 **Y.Wt.** +54 **Milk** +20
Frame: 4.0 (est) **Mature Wt.:** N/A **Price:** \$15/straw \$35/certificate

Our Genetic Predictions

Calving Ease: ****	Udder: *****
Fleshing Ability: *****	Disposition: *****



PCC PL Ranger 2450A

OCC Emblazon 854E	DHD Traveler 6807
PCC OAO Open Range 1241Y	Dixie Erica of CH 1019
DDA Sandy 404	Banjo of Wye UMF 6413
	Miss Diamond Jumbo 587
MH Magua 27	OCC Homer 650H
Tuned Magua PL Y11	MH Roda Lass 033
Treffer Tune 6151	Treffer Validate 0329
	TAR Dona Tune 0067

Ranger's sire is an Emblazon son out of the Sandy 404 cow that produced until she was 16 years old. Ranger goes back to the great Magua bull on the bottom side of his pedigree. He worked very well on a high-elevation ranch for seven years. Ranger has an Igenity DNA score for calving ease of 9 out of 10. Use him on virgin heifers with confidence. His \$EN EPD is in the top 2% of the Angus breed. Co-owned with Pulliam Angus Ranch in Colorado and Landrigan Livestock in Nebraska.



Sire of Yellowstone

Yellowstone

Birth Date: 5/11/19 **Reg. # :** 19612319 **A2 Beta Casein:** A1/A2
EPDs: **B.Wt.** -1.5 **W.Wt.** +23 **Y.Wt.** +42 **Milk** +17
Frame: 4.0 (est) **Mature Wt.:** N/A **Price:** \$20/straw \$35/certificate

Our Genetic Predictions

Calving Ease: *****	Udder: *****
Fleshing Ability: *****	Disposition: ****

PCC 4-P Yellowstone 1409G

Beral of Wye UMF 9288	Alap of Wye UMF 8329
PCC Tom Cat 1064C	Blackbird of Wye UMF 7620
PCC Bench Lass X0063	MH Magua 27
	PCC Bench Lass T7038
PCC TQ Bonaparte N06W	Beral of Wye UMF 9288
TQ Onie 53A	TQ Elizabeth 6N
TQ Onie 88X	PCC TQ Thick Line N56U
	TQ Onie 93U

Yellowstone is a Tom Cat son that goes back to Beral of Wye on both sides of his pedigree. He had more guts and volume than any bull we had ever seen at 18 months of age. Yellowstone is a very early-maturing bull with 5-star grass efficiency. His birth weight EPD is in the top 10% of the Angus breed. His maintenance energy EPD is in the top 2% of the breed. Yellowstone is co-owned with Lost Creek Cattle in North Dakota and 4-P Farms in Colorado.

BLACK ANGUS



Little Mo

Birth Date: 5/21/17 **Reg. # :** 19118560 **A2 Beta Casein:** A2/A2

EPDs: **B.Wt.** -2.1 **W.Wt.** +34 **Y.Wt.** +48 **Milk** +21

Frame: 4.0 (est) **Mature Wt.:** N/A **Price:** \$40/straw \$35/certificate

Our Genetic Predictions

Calving Ease: *****	Udder: *****
Fleshing Ability: *****	Disposition: *****



PCC LCC Little Mo 3301E

PCC Ruger 1042T
PCC Back in Black 1999Z
FSR Miss Rebel Star 880

MH Sari 423
MH Miss Rainmaker 3131

OCC Emancipate 889E
PCC Queen 409
PCC MH Rebel 2009
FSR Miss Five Star 613

DHD Traveler 6807
Dixie Erica of CH 1019
GDAR Rainmaker 340
IOU Miss Maverick 718

Little Mo is a 20-Star bull. He is a Ruger grandson out of a 13-year-old Emblazon daughter. There is tremendous longevity in this bull's pedigree. Little Mo was the number one bull in our 2018 Colorado Fall Bull Sale for early maturity and grass efficiency. His birth weight EPD is in the top 4% of the Angus breed. His maintenance energy EPD is in the top 3% of the breed. He is co-owned with Lost Creek Cattle Company and Billy Scott, both in North Dakota. **Very limited semen inventory.**

BLACK ANGUS



GameChanger

Birth Date: 4/13/19 **Reg. # :** 19834607 **A2 Beta Casein:** A1/A2
EPDs: **B.Wt.** -0.2 **W.Wt.** +42 **Y.Wt.** +58 **Milk** +18
Frame: 3.0 **Mature Wt.:** N/A **Price:** \$40/straw \$35/certificate

Our Genetic Predictions

Calving Ease: ****	Udder: *****
Fleshing Ability: *****	Disposition: *****



GameChanger of Hague 918

DDA Pinebank 50H	Pinebank Waigroup 41/97
Old Fahrens Blaze 723C	Melisa 206 DDA
Ole Pridemere 385Y	Sinclair Everlast 6R107
	Old Pridemere 31U
Resurgam Ngahere U407	Pinebank Waigroup 41/97
Lady Ida of Hague 1624	Resurgam Souvenir S253
HAR Lady Ida Y070 1204	Dunlouse Excalibur Y070
	Lady Ida Manning Volga 9708

We added GameChanger and Gambino to our program to bring in some unique genetics from the Pinebank Angus program in New Zealand. This program has adhered to philosophies very similar to ours for over 50 years. GameChanger goes back to the great Pinebank Waigroup 41/97 bull on both sides of his pedigree. He is an extremely thick, easy-fleshing bull — with a 5++ disposition. His birth weight EPD is in the top 20% of the Angus breed. His \$EN EPD is in the top 3%. GameChanger is co-owned with Hague Angus Ranch.



Gambino

Birth Date: 4/10/19 **Reg. # :** 19834620 **A2 Beta Casein:** A2/A2
EPDs: **B.Wt.** -0.4 **W.Wt.** +29 **Y.Wt.** +44 **Milk** +16
Frame: 4.0 **Mature Wt.:** N/A **Price:** \$10/straw \$35/certificate

Our Genetic Predictions

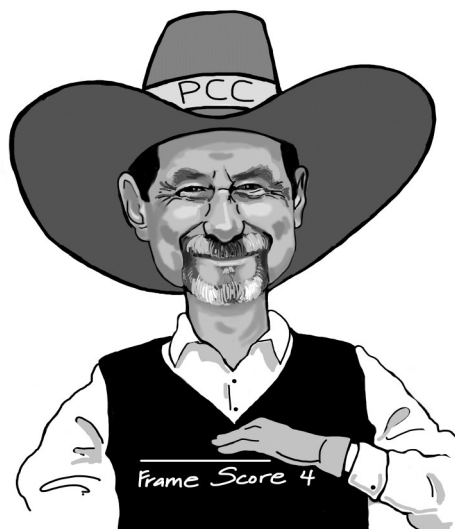
Calving Ease: ****	Udder: *****
Fleshing Ability: ****	Disposition: *****

Gambino of Hague 933

Pinebank Waigroup 45/02	Pinebank Waigroup 3/00
Pinebank Waigroup 152/04	Pinebank Waigroup 75/99
Pinebank Waigroup 86/96	Shalom 486/93
	Pinebank Waig 61/93
Dunlouse Jipsey Earl E161	Betro of Classlochie
Stella of Hague 1403	Dunlouse Jipsey Clova C095
DDA Stella 443	DDA Ally 69C
	DDA Stella 216

Gambino is the best son of Pinebank Waigroup 152/04 we have ever seen. His dam is a Jipsey Earl daughter. Jipsey Earl is a 100% old-Scottish-bred bull that is also the sire of our Mojo bull. We think this bull will match very well with our existing Angus genetics. Gambino stacks extra thickness onto a very moderate frame. His birth weight EPD is in the top 20% of the Angus breed. Gambino is co-owned with Hague Angus Ranch in Nebraska.

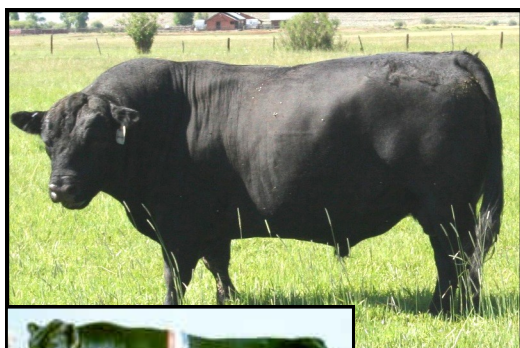
LOWLINE ANGUS



"A 4-frame cow is 50 inches tall. We have some thick, easy-fleshing, 4-frame cows that can easily weigh over 1200 pounds. A 4-frame bull is 54 inches tall. We have some thick, easy-fleshing 4-frame bulls that weigh well over a ton. That is big enough!"

"The only difference between a 4-frame and a 5-frame is two inches between the ground and the belly, which doesn't weigh anything and is impossible to eat."

~ Kit Pharo



Bruce

Birth Date: 4/20/06 **Reg. # :** 4636 **A2 Beta Casein:** A2/A2
Height: N/A **Weight:** N/A **Price:** \$8/straw \$35/certificate

Our Genetic Predictions



Bruce's Sire

SOLD OUT

Lazy G Bruce

Kintyre Dundee KLCP003
 Kintyre Robert the P
 Trangie K057

Murrumbong Roulette
 Murrumbong Susan
 Murrumbong Annabel

Framing Ease: *****	Culder: *****
Fleshing Ability: ***	Disposition: *****

Trangie M214 Rouseabout
 Trangie J303
 Trangie H011
 Trangie G166
 Mugga Regent R049
 Murrumbong Lucy May
 Brackengrae Beau Lad BR
 Trangie D060 (TRA D060)

Bruce is a fullblood Lowline bull. Some refer to Lowline Angus as miniature Angus. We don't like that term because it gives the wrong connotation. Lowline Angus are the real deal, and we believe they have a place in today's beef industry. Use Bruce on your 6-frame cows to produce thick, easy-fleshing 3-frame offspring in one generation. That saves years of time! Bruce's sire is one of the all-time winningest Lowline bulls in Australian history. His dam is a very structurally correct cow that was imported from Australia. Bruce is co-owned with James Rogers in Idaho. **Limited semen inventory.**

RED ANGUS



Herd Quitter

Birth Date: 5/13/11 **Reg. # :** 1485432 **A2 Beta Casein:** A2/A2
EPDs: **B.Wt.** -2.5 **W.Wt.** +48 **Y.Wt.** +73 **Milk** +25
Frame: 4.5 (est) **Mature Wt.:** N/A **Price:** \$40/straw

Our Genetic Predictions

Calving Ease: ****	Udder: *****
Fleshing Ability: *****	Disposition: *****



Semen is available for export for \$50 (US) per straw.



PCC Herd Quitter 4024Y

OCC No Doubt 622N
PCC Johnny B Good 4003R
PCC Sierra 539

MH Magua 27
PCC Miss Boot Jack S6022
PCC Miss Bootjack M67

PCC Colorado Hobo
OCC Vanessa 601L
BJR C-Chief 811
Beckton Sierra ZA30 RV

OCC Homer 650H
MH Roda Lass 033
PCC Colorado Hobo
PCC Miss Bootjack 301

Herd Quitter is our favorite Johnny B Good son. This bull has a very unique pedigree! His dam is a red Magua daughter that produced until she was 14 years old — and still had a great udder! Like most Johnny B Good sons, Herd Quitter combines calving ease with outstanding thickness, muscling, masculinity and fleshing ability. His birth weight EPD is in the top 32% the Red Angus breed. Herd Quitter has an outstanding Igenity score for tenderness. He is co-owned with Landrigan Livestock in Nebraska.

RED ANGUS



Johnny Angel

Birth Date: 5/14/08 **Reg. # :** 1273867 **A2 Beta Casein:** A2/A2
EPDs: B.Wt. -2.2 **W.Wt.** +34 **Y.Wt.** +48 **Milk** +25
Frame: 3.0 **Mature Wt.:** N/A **Price:** \$30/straw

Our Genetic Predictions

Calving Ease: ***	Udder: ****
Fleshing Ability: *****	Disposition: *****



PCC Johnny Angel 4094U

OCC No Doubt 622N
PCC Johnny B Good 4003R
PCC Sierra 539

PCC Cinco de Mayo H8130
PCC Cinco Lass L18
RKJ Hero 518 518 853

PCC Colorado Hobo
OCC Vanessa 601L
BJR C-Chief 811
Beckton Sierra Za30 RV
Buf Crk Copper 1924-5239
BKT Angel 9A40 BT
Lman Hero 9558
MCRT Kansas 099 648 518

Johnny Angel is a top-sort Johnny B Good son out of a Cinco de Mayo daughter. Cinco de Mayo is a maternal brother to our all-time favorite Angel cow. Johnny Angel has proven that he has what it takes to excel in a low-input, grass-based program. His calving ease direct EPD is in the top 40% of the Red Angus breed. His maintenance energy EPD is in the top 4% of the breed. Johnny Angel is co-owned with Agape Cattle Company in Texas. **Very limited semen inventory.**



Higgins

Birth Date: 9/12/20 **Reg. # :** 4460045 **A2 Beta Casein:** A2/A2
EPDs: B.Wt. -3.6 **W.Wt.** +33 **Y.Wt.** +49 **Milk** +24
Frame: 3.0 **Mature Wt.:** N/A **Price:** \$40/straw

Our Genetic Predictions

Calving Ease: ****	Udder: *****
Fleshing Ability: ****	Disposition: ****



PCC TCAG Higgins 5801H

PCC Johnny B Good 4003R
PCC Johnny Angel 4094U
PCC Cinco Lass L18

PCC ACT Crandall 5370C
ACT 1832
CFL 1240

OCC No Doubt 622N
PCC Sierra 539
PCC Cinco de Mayo H8130
RKJ Hero 518 518 853
RF 5-Star Gold 4550P
CFL 1325
PCC LLL Johnny Mizzou 5916W
0101 Jan Miller Chief

We are extremely excited about this bull. He has been used two years on heifers at PCC Headquarters in Colorado, as well as in a cooperative herd in Eastern Oklahoma. Higgins is a Johnny Angel son out of a Crandall daughter. He has perfect feet! Higgins' birth weight EPD is in the top 20% of the Red Angus breed. His maintenance energy EPD is in the top 3% of the breed. Higgins is co-owned with 5P Farms in Oklahoma and Terrell Creek Adapted Genetics in Missouri.

RED ANGUS



Johnny B Special

Birth Date: 4/27/11 **Reg. # :** 1485431 **A2 Beta Casein:** A2/A2
EPDs: **B.Wt.** -1.4 **W.Wt.** +34 **Y.Wt.** +55 **Milk** +13
Frame: 3.5 (est) **Mature Wt.:** N/A **Price:** \$30/straw

Our Genetic Predictions

Calving Ease: ***	Udder: *****
Fleshing Ability: ****	Disposition: *****



PCC Johnny B Special 4023Y

OCC No Doubt 622N
PCC Johnny B Good 4003R
PCC Sierra 539
BAA Viking 5105A
PCC Miss Roxie W9069
PCC Miss Roxie 620

PCC Colorado Hobo
OCC Vanessa 601L
BJR C-Chief 811
Beckton Sierra ZA30 RV
OCC BAA Slugger 310A
Black Bull Blackcap N4V
Buf Crk Hobo 1961
JWJ Rock & Fire 0083 1069

Johnny B Special was the leadoff Red Angus bull in our Fall 2012 Bull Sale. He is a Johnny B Good son that has produced some outstanding replacement females. The bottom side of his pedigree goes back to some Black Angus genetics with superb longevity and udder conformation. Like his sire, this bull had outstanding ultrasound data when he came off of our unique all-grass forage test. His calving ease direct EPD is in the top 22% of the Red Angus breed. His maintenance energy EPD is in the top 1% of the breed.

RED ANGUS



Johnny Mizzou

Birth Date: 9/7/09 **Reg. # :** 1370667 **A2 Beta Casein:** A2/A2
EPDs: **B.Wt.** -3.5 **W.Wt.** +44 **Y.Wt.** +71 **Milk** +24
Frame: 4.0 (est) **Mature Wt.:** N/A **Price:** \$40/straw

Our Genetic Predictions

Calving Ease: ****	Udder: *****
Fleshing Ability: *****	Disposition: *****



Semen is available for export for \$50 (US) per straw.

— Not Available in Canada —



PCC LLL Johnny Mizzou 5916W

OCC No Doubt 622N
PCC Johnny B Good 4003R
PCC Sierra 539
PCC Short Cut L05
LLL Shorty's Blackbird 404
LLL Blackbird 234

PCC Colorado Hobo
OCC Vanessa 601L
BJR C-Chief 811
Beckton Sierra ZA30 RV
Colorado Shorty 894F
PCC Miss Forager 839
LLL Bandicoot 005
LLL New Trends Blackbird 909

Johnny Mizzou was one of the most impressive Red Angus bulls to come through our Missouri forage test program. He rated a 5 and 5+ for everything we evaluated and scored. He is a Johnny B Good son out of a Short Cut daughter. Johnny Mizzou's maintenance energy EPD is in the top 7% of the Red Angus breed. His birth weight EPD is in the top 21%. This bull is doing great things in Red Angus programs around the world. Johnny Mizzou is co-owned with Triple L Red Angus in Missouri.

RED ANGUS

Yazzou



PCC Short Cut



PCC LLL Yazzou 5920A

Birth Date: 8/1/13 **Reg. # :** 1670103 **A2 Beta Casein:** A2/A2
EPDs: B.Wt. -3.6 W.Wt. +41 Y.Wt. +69 Milk +27
Frame: 4.0 (est) **Mature Wt.:** N/A **Price:** \$15/straw

Our Genetic Predictions

Calving Ease: ***	Udder: *****
Fleshing Ability: ****	Disposition: *****

PCC Johnny B Good 4003R PCC LLL Johnny Mizzou 5916W LLL Shorty's Blackbird 404 PCC Short Cut L05 LLL Lass X419 LLL Lass 419	OCC No Doubt 622N PCC Sierra 539 PCC Short Cut L05 LLL Blackbird 234 Colorado Shorty 894F PCC Miss Forager 839 PCC Short Cut L05 KG Lass 72
--	--

Yazzou's pedigree goes back to our great Short Cut bull three times. Short Cut naturally sired over 1000 calves in a ten year period (spring and fall calving herds). Yazzou's birth weight EPD is in the top 20% of the Red Angus breed. His maintenance energy value is in the top 3%. Yazzou is co-owned with Triple L Red Angus in Missouri. **Limited semen inventory.**

Hawkeye

Birth Date: 4/27/20 **Reg. # :** 4285143 **A2 Beta Casein:** A1/A2
EPDs: B.Wt. -4.1 W.Wt. +36 Y.Wt. +56 Milk +22
Frame: 2.5 **Mature Wt.:** N/A **Price:** \$40/straw



PCC BSR Hawkeye 4921H

PCC OH Care Free 5501B PCC ACT Extraordinary 5330E CFL 1315 Bruns Colorado High 117 BSR Daisy C552 CTM Daisy 611	PCC Kaycee Hobo 4004S OH MS Emulous M178 965W PCC Short Cut L05 CFL 1050 PCC Colorado High 4042P 5L CLASSY 295-5109 RF Lancelot 3192 RF Lark 831-1220-3142
---	---

Our Genetic Predictions

Calving Ease: *****	Udder: *****
Fleshing Ability: ****	Disposition: *****

Hawkeye is a small-framed Care Free grandson that goes back to the great Colorado High bull on the bottom side of his pedigree. He has an Igenity score of 8.5 out of 10 for calving ease. Hawkeye's birth weight EPD is in the top 13% of the Red Angus breed. His maintenance energy EPD is in the top 1%. Hawkeye is co-owned with Dry Creek Red Angus in Minnesota and Bar S Ranch in Kansas. **Very limited semen inventory.**

RED ANGUS



Sire of Cliff

PCC DC Cliff 5056C

Cliff

Birth Date: 4/29/15 **Reg. # :** 1741425 **A2 Beta Casein:** A2/A2
EPDs: **B.Wt.** -4.0 **W.Wt.** +51 **Y.Wt.** +79 **Milk** +29
Frame: 3.5 (est) **Mature Wt.:** N/A **Price:** \$15/straw

Our Genetic Predictions

Calving Ease: ***** **Udder:** *****
Fleshing Ability: ***** **Disposition:** *****

PCC D-7 Hoodoo 4718X
PCC DC Harvey 5025A
DC 357W Amy Cohi-345

PCC Hanky Panky 4013U
DC Hope Z230
PCC DC 023X Joyce

PCC RF MASH 4516T
Beckton Minola P826 DM
PCC Colorado High 4042P
DC 3145 124

PCC Señor Bajo 4024P
Beckton Angel CB82 JL
PCC OH Fabian 4261R
DC Rejoice N22K5

Cliff is a 20-Star bull that goes back to our favorite Angel cow on both sides of his pedigree. He is a very early-maturing bull. Cliff is being used naturally in PCC cooperative herds in Kansas and Texas. Sons and daughters are some of the best in the PCC Program. Cliff's calving ease direct EPD is in the top 15% of the Red Angus breed. His maintenance energy EPD is in the top 4%. Cliff is co-owned with Dry Creek Red Angus in Minnesota, Bar S Ranch in Kansas and R2 Ranch in Texas.



Sire of Jango

PCC DC Jango 5041J

Jango

Birth Date: 5/18/21 **Reg. # :** 4447605 **A2 Beta Casein:** A2/A2
EPDs: **B.Wt.** -3.5 **W.Wt.** +46 **Y.Wt.** +76 **Milk** +37
Frame: 4.5 (est) **Mature Wt.:** N/A **Price:** \$40/straw

Our Genetic Predictions

Calving Ease: ***** **Udder:** *****
Fleshing Ability: ***** **Disposition:** *****

PCC D-7 Amazon 4735A
PCC ACT Decatur 5316D
CFL 1325

Redhill 132Y Ripper 69B
OH Ms Emulous 69B 626D
OH Ms 147-437B

PCC RF MASH 4516T
DeWit Minola R25
PCC LLL Johnny Mizzou 5916W
1006 Miller Choctaw Chief

Redhill 28U Ripper 132Y
Beckton Indigo X072 N
PCC Kaycee Hobo 4004S
OH Ms Emulous CC 147



We are extremely excited about this bull. Jango's pedigree goes back to Johnny Mizzou on the top and Kaycee Hobo on the bottom. He is a very thick and easy-fleshing bull. Jango has an Igenity DNA score for calving ease of 8.5 out of 10. His calving ease direct EPD is in the top 18% of the breed. Jango is co-owned with Dry Creek Red Angus in Minnesota and Bruns Red Angus in Nebraska.

RED ANGUS



Gold Mine

Birth Date: 5/8/19 **Reg. # :** 4239466 **A2 Beta Casein:** A2/A2
EPDs: **B.Wt.** -4.9 **W.Wt.** +37 **Y.Wt.** +58 **Milk** +26
Frame: 4.5 (est) **Mature Wt.:** N/A **Price:** \$40/straw

Our Genetic Predictions

Calving Ease: *****	Udder: *****
Fleshing Ability: *****	Disposition: *****



Semen is available for export for \$50 (US) per straw.



PCC CTM Gold Mine 5149G

PCC Short Cut L05
PCC REI Super Pud 5216W
REI Star

PCC Gold Standard 4013T
CTM Betty 4013-823-001
CTM Lark 4429-3167-823

Colorado Shorty 894F
PCC Miss Forager 839
RF 5-Star Gold 4550P
PCC Colorado Angel M01
RF 5-Star Gold 4550P
PCC Colorado Dream P1051
PCC OH Cash Crop 4429P
RF Betty 831-6007-3167

Gold Mine is another outstanding Super Pud son. His dam is still going at 15 years of age. Gold Mine goes back to 5-Star Gold on both sides of his pedigree. He had impressive 5-star ratings for grass efficiency, masculinity, muscling and thickness. His birth weight and calving ease direct EPDs are both in the top 10% of the Red Angus breed. His calving ease maternal EPD is in the top 5% of the Red Angus breed. Gold Mine is co-owned with the McDaniel Ranch in Montana.

RED ANGUS



Festus

Birth Date: 5/13/16 **Reg. # :** 3599799 **A2 Beta Casein:** A2/A2
EPDs: **B.Wt.** -3.5 **W.Wt.** +35 **Y.Wt.** +55 **Milk** +27
Frame: 3.5 (est) **Mature Wt.:** N/A **Price:** \$40/straw

Our Genetic Predictions

Calving Ease: ****	Udder: *****
Fleshing Ability: *****	Disposition: *****



Semen is available for export for \$50 (US) per straw.



PCC Festus 4102D

PCC Short Cut L05
PCC REI Super Pud 5216W
REI Star

PCC Good As Gold 4010U
PCC Angel Z2070
PCC Angel U8066

Colorado Shorty 894F
PCC Miss Forager 839
RF 5-Star Gold 4550P
PCC Colorado Angel M01
RF 5-Star Gold 4550P
PCC Somethin' Special P1061
PCC Colorado Hobo
PCC Beckton Angel CB82 JL

Festus is an extremely masculine Super Pud son. He ain't no sissy bull! His sons are always high-selling bulls. Festus goes back to our favorite Angel cow on both sides of his pedigree. His birth weight EPD is in the top 21% of the Red Angus breed. His maintenance energy is in the top 5%. Festus has great foot and leg structure, which is missing in most of today's Red Angus programs. He is co-owned with Luis Valles of La Lagartija Cattle Company in Mexico.



Hercules

Birth Date: 5/14/20 **Reg. # :** 4383371 **A2 Beta Casein:** A2/A2
EPDs: **B.Wt.** -3.8 **W.Wt.** +54 **Y.Wt.** +78 **Milk** +32
Frame: 4.0 (est) **Mature Wt.:** N/A **Price:** \$40/straw

Our Genetic Predictions

Calving Ease: *****	Udder: *****
Fleshing Ability: *****	Disposition: *****



PCC CTM Hercules 5100H

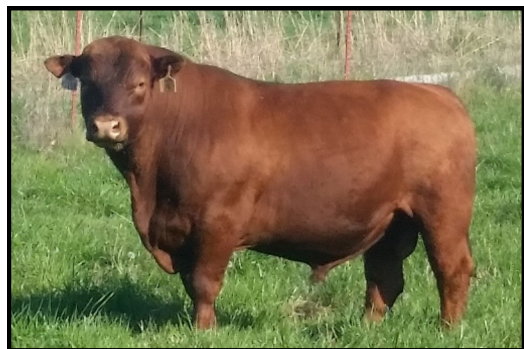
PCC Short Cut L05
PCC REI Super Pud 5216W
REI Star

PCC DC Meatball 5017X
CTM Lark X012-MTBL-A312
CTM Lark 2061 COHI X012

Colorado Shorty 894F
PCC Miss Forager 839
RF 5-Star Gold 4550P
PCC Colorado Angel M01
OCC Kissimmee 754K
DC Alice-77
PCC Colorado High 4042P
RF Lark 9015-1800-2193

Hercules is another Super Pud son that goes back to our all-time favorite Angel cow on both sides of his pedigree. He is the total package — with 5-star ratings for grass efficiency, fleshing ability, masculinity, muscling, thickness and fly resistance. His birth weight and calving ease direct EPDs are in the top 20% of the Red Angus breed. He has an Igenity DNA calving ease score of 8 out of 10. Hercules is co-owned with the McDaniel Ranch in Montana.

RED ANGUS



Braveheart

Birth Date: 9/13/14 **Reg. # :** 1738360 **A2 Beta Casein:** A2/A2
EPDs: B.Wt. -4.4 **W.Wt.** +36 **Y.Wt.** +57 **Milk** +35
Frame: 4.0 (est) **Mature Wt.:** N/A **Price:** \$15/straw

Our Genetic Predictions

Calving Ease: *****	Udder: *****
Fleshing Ability: ****	Disposition: *****

PCC Short Cut L05
PCC REI Super Pud 5216W
REI Star
PCC WFF Braveheart 4515B
OH Thompson 4203R
WFF Ms Emulous Thom 8501U
OH Ms Emulous Mm 4553
Colorado Shorty 894F
PCC Miss Forager 839
RF 5-Star Gold 4550P
PCC Colorado Angel M01
OCC No Doubt 622N
OH Miss Harpo 957
OCC Medicine Man 602M
SixL Ms Hobo 799

Braveheart is an extremely thick, heavy-muscled Super Pud son. He has great calving ease, with a calving ease direct EPD in the top 11% of the Red Angus breed. His maintenance energy EPD is in the top 3%. Braveheart is among the best we've seen for hair coat and fly resistance. He has been used heavily in PCC programs in five different states. Braveheart is co-owned with Walker Cattle Company in Missouri, Bar S Ranch in Kansas and R2 Ranch in Texas. **Limited semen inventory.**



Hiawatha

Birth Date: 4/4/20 **Reg. # :** 4285161 **A2 Beta Casein:** A2/A2
EPDs: B.Wt. -6.1 **W.Wt.** +37 **Y.Wt.** +64 **Milk** +34
Frame: 4.5 (est) **Mature Wt.:** N/A **Price:** \$40/straw

Our Genetic Predictions

Calving Ease: *****	Udder: *****
Fleshing Ability: *****	Disposition: *****



Semen is available for export for \$50 (US) per straw.



PCC REI Super Pud 5216W
PCC WFF Braveheart 4515B
WFF Ms Emulous Thom 8501U
PCC BSR Hiawatha 4930H
PCC LLL Weston 5912W
BSR Ruby C522
LRAR HV Ruby S013
PCC Short Cut L05
REI Star
OH Thompson 4203R
OH Ms Emulous Mm 4553
PCC Johnny B Good 4003R
LLL EZ Barbara 718
Beckton Saga F321 KJ
LRAR HV Ruby H17

Calving ease at its Very Best! Hiawatha's calving ease direct EPD is in the top 2% of the Red Angus breed. His calving ease maternal EPD is in the top 4%. His maintenance energy EPD is in the top 8%. Hiawatha is a Braveheart son that goes back to Johnny B Good on the bottom side of his pedigree. This bull is consistently producing extremely thick and heavy-muscled calves. He is being used heavily in the US and Australia. Hiawatha is co-owned with Bar S Ranch in Kansas.

RED ANGUS



Forte

Birth Date: 9/23/18 **Reg. # :** 4095492 **A2 Beta Casein:** A1/A2
EPDs: **B.Wt.** -4.2 **W.Wt.** +35 **Y.Wt.** +56 **Milk** +27
Frame: 4.0 (est) **Mature Wt.:** N/A **Price:** \$20/straw

Our Genetic Predictions

Calving Ease: *****	Udder: *****
Fleshing Ability: *****	Disposition: *****



Semen is available for export for \$25 (US) per straw.

PCC Kaycee Hobo 4004S
PCC OH Care Free 5501B
OH MS Emulous M178 965W
PCC D-7 Forte 4714F
SGG F60 Red Magua
D-7 Lydia B57
D-7 Lydia Y86

Sodak Oscar 0366
PCC Red Wing 055
BTF 037 M178
Ms Emulous 666
MH Magua 27
Kit's Juliana of Shortgrass
PCC RF MASH 4516T
Beckton Lydia M121 WR

Forte was the leadoff bull in our 2020 Missouri Bull Sale. He is a Care Free son that goes back to our great Magua bull on the bottom side of his pedigree. He is an extremely thick, heavy-muscled bull with great calving ease. His birth weight EPD is in the top 14% of the Red Angus breed. His maintenance energy EPD is in the top 7%. Forte is co-owned with Ozark Hills Genetics in Missouri and D Bar 7 Ranch in Indiana.

RED ANGUS



Durango

Birth Date: 5/23/16 **Reg. # :** 3567131 **A2 Beta Casein:** A2/A2
EPDs: **B.Wt.** -3.0 **W.Wt.** +28 **Y.Wt.** +47 **Milk** +21
Frame: 3.5 **Mature Wt.:** N/A **Price:** \$40/straw

Our Genetic Predictions

Calving Ease: *****	Udder: *****
Fleshing Ability: *****	Disposition: *****



PCC P-L Durango 5702D

MH Magua 27
PCC Sneaky Pete 1019X
PCC T Lass P416

REI Chunky's Remediate
Bruns T04-108
DGL Rose T04

OCC Homer 650H
MH Roda Lass 033
PCC Iron Man 049
PCC Enquisitive 212

OH Colorado Chunky 210
PCC Angel 352
Beckton Nexus L016
Beckton Rose J897 HD

Durango is somewhat of an outcross to the PCC program. He goes back to Magua (Angus bull with a red gene) on the top side of his pedigree. He goes back to Colorado Chunky and our favorite Angel cow on the bottom. Durango's calving ease direct EPD is in the top 20% of the Red Angus breed. His maintenance energy EPD is in the top 5%. Durango has outstanding ultrasound data for marbling and tenderness. He also has excellent foot and leg structure. Durango is co-owned with Landrigan Livestock in Nebraska.

RED ANGUS



Parker

Birth Date: 4/26/15 **Reg. # :** 1741453 **A2 Beta Casein:** A2/A2
EPDs: B.Wt. -3.1 **W.Wt.** +54 **Y.Wt.** +76 **Milk** +31
Frame: 3.5 (est) **Mature Wt.:** N/A **Price:** \$40/straw

Our Genetic Predictions

Calving Ease: ****	Udder: *****
Fleshing Ability: *****	Disposition: *****



PCC DC Parker 5055C

PCC Short Cut L05
PCC High Plains 4033X
PCC Colorado Angel P1055
PCC D-7 Hoodoo 4718X
DC Hanako A320
DC Jackie Y116

Colorado Shorty 894F
PCC Miss Forager 839
PCC Colorado Hobo
Beckton Angel CB82 JL
PCC RF MASH 4516T
Beckton Minola P826 DM
PCC Johnny B Good 4003R
DC Alice-77

Parker is an impressive Short Cut grandson out of a Hoodoo daughter that goes back to Johnny B Good. His sons have been very popular in all of our bull sales. Parker's calving ease direct EPD is in the top 15% of the Red Angus breed. He has a DNA score of 9 out of 10 for tenderness. He has been one of the most heavily used Red Angus sires in our program. He has also been heavily used in Australia. Parker is co-owned with Agape Cattle Company in Texas and Dry Creek Red Angus in Minnesota.



Dam of 5-Star Gold

5-Star Gold

Birth Date: 3/15/04 **Reg. # :** 1000253 **A2 Beta Casein:** A2/A2
EPDs: B.Wt. -2.2 **W.Wt.** +49 **Y.Wt.** +75 **Milk** +22
Frame: 4.0 **Mature Wt.:** N/A **Price:** \$20/straw

Our Genetic Predictions

Calving Ease: *****	Udder: *****
Fleshing Ability: ****	Disposition: *****

RF 5-Star Gold 4550P

Sams Prospector 133Z
RF Samson 9015
RF Marie 8968-473-1772
BKT Viking 8968 XM
RF Marie 8968-473-1772
RL Marie 94-976-473

TLA Northern Samurai
KBJ Round Lassie 18T
BKT Viking 8968 XM
RL Marie 94-976-473
Beckton Viking 8099X
Beckton Lana 7972 NV
RL DRNG 757-726-94
RL Marie 735-269-976

5-Star Gold was a very impressive bull. He had an extremely wide stance, along with a very thick and wide butt. 5-Star Gold is tightly linebred to a very special cow (pictured). He and his sire have the same momma. This cow produced until she was 15 years old. We are unable to determine for sure that 5-Star Gold is Tenet®. However, most of his sons are Tenet®. 5-Star Gold's DNA score for calving ease is 9 out of 10. He is co-owned with the R2 Ranch in Texas and the Red Fork Ranch in Wyoming.

RED ANGUS



Gold Standard

Birth Date: 5/15/07 **Reg. # :** 1211263 **A2 Beta Casein:** A2/A2
EPDs: B.Wt. -3.5 **W.Wt.** +43 **Y.Wt.** +65 **Milk** +26
Frame: 3.5 (est) **Mature Wt.:** N/A **Price:** \$40/straw

Our Genetic Predictions

Calving Ease: **** **Udder:** ****
Fleshing Ability: *** **Disposition:** *****



SOLD OUT

PCC Gold Standard 4013T

RF Samson 9015 Sams Prospector 133Z
RF 5-Star Gold 4550P RF Marie 8968-473-1772
RF Marie 8968-473-1772 BKT Viking 8968 XM
PCC Colorado Hobo RL Marie 94-976-473
PCC Colorado Dream P1051 Buf Crk Hobo 1961
PCC Sierra 539 RKJ Hero 433 804
BJR C-Chief 811
BKT Sierra 7360 DT

Over the years, we have used three top-sort 5-Star Gold sons out of ET daughters of the great Colorado Hobo bull and Johnny B Good's dam. We came to the conclusion that Gold Standard was the best of the bunch! Gold Standard's pedigree is stacked for maternal greatness from top to bottom. His maintenance energy EPD is in the top 7% of the Red Angus breed. Gold Standard also has an outstanding Igenity DNA score for tenderness. Gold Standard is co-owned with the McDaniel Ranch in Montana.



Crandall

Birth Date: 9/26/15 **Reg. # :** 3523190 **A2 Beta Casein:** A2/A2
EPDs: B.Wt. -2.6 **W.Wt.** +47 **Y.Wt.** +74 **Milk** +23
Frame: 4.0 (est) **Mature Wt.:** N/A **Price:** \$40/straw

Our Genetic Predictions

Calving Ease: **** **Udder:** *****
Fleshing Ability: **** **Disposition:** *****



PCC ACT Crandall 5370C

RF Samson 9015 Sams Prospector 133Z
RF 5-Star Gold 4550P RF Marie 8968-473-1772
RF Marie 8968-473-1772 BKT Viking 8968 XM
PCC ACT Crandall 5370C RL Marie 94-976-473
PCC LLL Johnny Mizzou 5916W PCC Johnny B Good 4003R
CFL 1325 LLL Shorty's Blackbird 404
1006 Miller Choctaw Chief 0244 Miller Choctaw Chief 373
0755 Miller H3554 Chief

Crandall is a 5-Star Gold son out of a Johnny Mizzou daughter. When he was evaluated at 15 months of age, he was given very impressive 5+ scores for muscling, masculinity and overall rating. We don't know of a bull in the Red Angus breed that has a better hair coat (the picture above was taken in January). Crandall's birth weight EPD is in the top 28% of the Red Angus breed. He is co-owned with Agape Cattle Company in Texas, 5P Farms in Oklahoma and Walker Cattle Company in Missouri.

POLLED HEREFORD



Axel

Birth Date: 9/7/13 **Reg. # :** 43509337 **A2 Beta Casein:** A2/A2
EPDs: **B.Wt.** +2.3 **W.Wt.** +52 **Y.Wt.** +73 **Milk** +19
Frame: 3.5 (est) **Mature Wt.:** N/A **Price:** \$40/straw \$35/certificate

Our Genetic Predictions

Calving Ease: **	Udder: *****
Fleshing Ability: *****	Disposition: *****



Semen is available for export for \$50 (US) per straw.



PCC OH Axel 9516A

ALH 0407 Payne 0850
ALH 0850 Payne 1111
ALH 386 Violet 0940

HPH N-15 QT Plato R-30
OH Lucy R-30 0508X
OH Vicki Lucy 704T

ALH 0246 Payne 0407
ALH 0424 Jane 0608
PW 934 Victor 386
ALH 0343 Violet 0616

HPH 6007 Carlos Plato N-15
HPH 6007 QT Sadie M-21
ALH 034 Plato Dom 0424
PPH Al's Predom Key Vick

Axel is the most impressive Hereford bull to go through the PCC program. He was purchased by a couple of seedstock producers in Canada — where he is leaving his mark. Axel has sired several top-sort bulls in the PCC program. He will add guts, volume and muscle to his offspring. He is the perfect baldy-maker. Axel is co-owned with Ozark Hills Genetics in Missouri, along with The 98 Ranch and Gemstone Cattle of Canada.

POLLED HEREFORD



Jackpot

Birth Date: 10/13/21 **Reg. # :** 44380302 **A2 Beta Casein:** A1/A1
EPDs: **B.Wt.** -2.0 **W.Wt.** +40 **Y.Wt.** +60 **Milk** +16
Frame: 4.5 (est) **Mature Wt.:** N/A **Price:** \$20/straw \$35/certificate

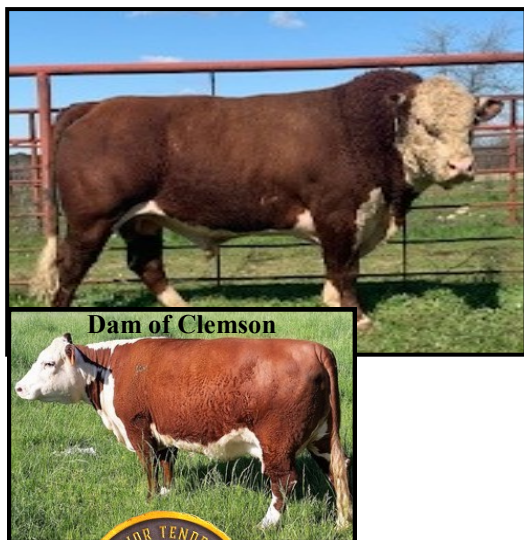
Our Genetic Predictions

Calving Ease: *****	Udder: ****
Fleshing Ability: ****	Disposition: *****

PCC Jackpot 9009J

PPH Domino Plato Rupert 2 PCC ACT Calvert 9374C NDPH M180 U73 Z3 BTF DPH Platw 167 5106 ET NDPH 5106 T16 Z34 DPH Grassie 4091 T16	NT Plato 19 209 PPH Plato Victor 1 DPH BTF 13 M180 DPH Grassie 4091 U73 NT Plato Rupert 167 TRM Queen 8126 BTF DPH E132 4091 DPH Vicky R275 H64
--	--

Jackpot was the leadoff Hereford bull in our 2023 Texas Bull Sale. He was added to our AI Sire lineup to replace his sire as our calving-ease Hereford bull. Jackpot's birth weight EPD is in the top 3% of the entire Hereford breed. He goes back to Neal Trask breeding on both sides of his pedigree. **Limited Semen Inventory.**



Dam of Clemson



Clemson

Birth Date: 2/1/15 **Reg. # :** 43662827 **A2 Beta Casein:** A1/A2
EPDs: **B.Wt.** +0.6 **W.Wt.** +38 **Y.Wt.** +54 **Milk** +14
Frame: 4.0 (est) **Mature Wt.:** N/A **Price:** \$30/straw \$35/certificate

Our Genetic Predictions

Calving Ease: ***	Udder: *****
Fleshing Ability: ****	Disposition: *****

Clemson 1129 Plato Y308 C310

NT Plato Rupert 4 BTF 4 3119 ET NT Austina 338 BTF 252 6104 Clemson 252 6104 Y308 Edisto 167 Plato Rupert U318ET	NT Plato Rupert 0590 NT Ldy Boc Grove NT Beau Blanch K5 NT Plato Austina BR WPHF Victor 964 252 FHC 283 454 529 NT Plato Rupert 167 NT Trm Lady Advance J5
---	---

Clemson is a product of Clemson University's effort to preserve the Neil Trask gene pool. He is an intensely linebred bull that traces back 40+ times to NT Rupert (AHA # 9446404). Clemson's birth weight EPD is in the top 14% of the Polled Hereford breed. Clemson has produced some beautiful, problem-free daughters. Clemson is co-owned with Agape Cattle Company in Texas.

TARENDAISE



Colfax

Birth Date: 5/20/05 **Reg. # :** 213038 **A2 Beta Casein:** A1/A1
EPDs: B.Wt. +1.1 W.Wt. -1 Y.Wt. +7 Milk +0
Frame: 4.0 (est) **Mature Wt.:** N/A **Price:** \$8/straw

Our Genetic Predictions

SOLD OUT

Calving Ease: ***	Udder: ****
Feeding Ability: ***	Disposition: ****

PCC Colfax 7004R

414

Bluegrass Energy	Black 8-Ball
PCC Chanel E522	SBT B1N
C-C Polled Coteau 64U	Hatfield Desert Extra
MCC Rebo B23	JK Chanel C125
	Polled Coteau S210
	0216 L64
	MCC Junior
	GHF Liz 519X

Colfax is the most impressive Purebred Tarentaise bull to go through the PCC program. He is a small-framed, breed-color bull with tremendous muscling and masculinity. He excelled in our all-grass program. Colfax combines the very best of our Tarentaise genetics. We flushed his dam at 14 years of age. Colfax sold in our 2006 Fall Bull Sale — and we were thrilled to have the opportunity to buy him back in 2009. He worked in a PCC Composite cowherd until he was injured at 10 years of age. **Limited semen inventory.**

Tarentaise Genetics

Tarentaise is a Continental breed that originated in the French Alps. They are noted for their fertility, milk production, meat-to-bone ratio and udder conformation. Compared to the British breeds, Tarentaise have a higher growth rate, higher milk production and produce a leaner carcass. Compared to most of the other Continental breeds, they excel in calving ease and fertility, while having a smaller mature size. Tarentaise is the most moderate-sized exotic breed that we know of. We no longer have many purebred Tarentaise. However, they continue to provide the foundation for many of our composite cattle.

Our Tarentaise Composite cattle were designed to provide the right genetic combination to fit our environment, as well as our production goals. They are 25 to 50 percent Tarentaise, 25 to 75 percent Red or Black Angus, and 0 to 25 percent Hereford. They can be red or black in color. Our Composite cows have the ability to wean our heaviest calves while holding their condition and rebreeding.

Why Composites? Crossbred cattle have always been much more efficient than straightbred cattle, but most crossbreeding systems are complicated and frustrating. They require too many breeding pastures, too many different breeds of bulls and too much time and management. Traditional crossbreeding also produces a lack of uniformity in calf size, cow size, muscling and milk production since several different breeds of bulls are used.

Composite bulls provide you with all the advantages of breed complementarity and hybrid vigor without all the problems associated with the typical crossbreeding system. Instead of using several different breeds of bulls you can use composite bulls to achieve the same results. You would not have to individually identify and sort cows into different breeding pastures to be bred by different breeds of bulls. In fact, you could run all of your cows in one herd with one set of composite bulls. This makes a rotational grazing system possible.

COMPOSITE



Pictured at two years of age



PCC P-L Colombo 7914C

PCC Foster H140
PCC Colfax 7004R
Tarentaise Dam 414

PCC P-L Cash Man 5726U
Red Angus Dam Z12
Red Angus Dam 0113

Colombo

Birth Date: 5/10/15

A2 Beta Casein: A1/A2

Description: Red/Polled (50% Red Angus; 50% Tarentaise)

Frame: 4.0 (est)

Mature Wt.: N/A

Price: \$20/straw

Our Genetic Predictions

Calving Ease: ****

Udder: *****

Fleshing Ability: ****

Disposition: *****

Bluegrass Energizer
PCC Chanel E522
C-C Polled Coteau 64U
MCC Rebo B23

PCC OH Cash Crop 4429P
OH Ms Emulous Mm 522R
Red Angus Sire
Red Angus Dam

Colombo was the leadoff Composite bull in our Colorado 2016 Fall Sale. He is a high-marbling bull that has 4+ ratings for thickness, masculinity and overall rating when we evaluated him prior to the sale. Colombo is a Colfax son. His dam goes back to Cash Crop (Red Angus). He is co-owned with Landrigan Livestock in Nebraska. **Limited Semen Inventory.**



Sire of Tallahassee

PCC Tallahassee 7043Z

OCC No Doubt 622N
PCC Johnny B Good 4003R
PCC Sierra 539

Bluegrass Energizer
PCC Miss Candi M53
SBT B1N

Tallahassee

Birth Date: 5/17/12

A2 Beta Casein: A2/A2

Description: Red/Polled (50% Red Angus; 50% Tarentaise)

Frame: 5.0 (est)

Mature Wt.: N/A

Price: \$8/straw

Our Genetic Predictions

Calving Ease: ***

Udder: ****

Fleshing Ability: *****

Disposition: *****

PCC Colorado Hobo
OCC Vanessa 601L
BJR C-Chief 811
Beckton Sierra ZA30 RV

Bluegrass Black 8-Ball
SBT B1N
Hatfield Desert Extra
Tarentaise Dam 9316

Tallahassee was the leadoff Composite bull in our Colorado 2013 Fall Bull Sale. His dam produced in our PCC herd until she was 13 years old. She was sold because her last calf died for unknown reasons prior to weaning. We don't keep cows in the PCC program unless they wean a calf every year. Tallahassee is co-owned with the CJ Schemper Farm in Kansas.

COMPOSITE



Elijah

Birth Date: 4/12/99

A2 Beta Casein: A2/A2

Description: Black/Polled (50% Angus; 50% Tarentaise)

Frame: 3.0

Mature Wt.: 1800+

Price: \$20/straw

Our Genetic Predictions

Calving Ease: ****

Udder: ****

Fleshing Ability: ****

Disposition: ****



MCC Elijah 934

OCC Anchor 771A
OCC Emancipate 889E
Dixie Erica of RR 4309

C-C Polled Coteau 64U
Tarentaise Dam
Tarentaise Dam

DHD Traveler 6807
OCC Juanada 709V
Shoshone Vantage JB23
Dixie Erica of RR 6124

Polled Coteau S210
0216 L64
Tarentaise Sire
Tarentaise Dam

Elijah was an extremely thick, easy-fleshing, heavy-muscled bull — in a 3-frame package. He has been used on well over 500 first-calf heifers with very few problems. It is very rare to find a bull this stout that has this much calving ease. Elijah was still working in a PCC cooperative herd at 11 years of age. He is co-owned with Matney Cattle Company in Wyoming and Landrigan Livestock in Nebraska.

Heat-Tolerant Genetics

Since 2015, we have been experimenting with several different breeds and breed combinations to come up with some excellent genetic solutions to heat stress. The one thing we want to minimize is the use of Brahman genetics. Although Brahman cattle excel in heat tolerance, they are too big and inefficient to fit our low-input program. Brahman and Brahman-cross cattle also lack fertility, which is the most important economic trait for cow-calf producers. Two more problems with Brahman-cross cattle are disposition and carcass quality.

For the most part, we are experimenting with Bos Taurus breeds of cattle that have Spanish and/or African origins. These include Mashona, Creollo, Romosinuano, Tuli, Senepol and South Poll. Although we are working with some purebred tropical cattle, we much prefer to create composite breeds that are the result of using our thick, easy-fleshing, moderate-sized Red and Black Angus cattle as the base. The resulting composite cattle have a much more acceptable and marketable appearance.

Mashona is an indigenous breed from Africa that originated with the Shona people in Zimbabwe. The breed was developed under natural selection without any external inputs for thousands of years in an extremely harsh and unforgiving environment. Mashona cattle have extremely low maintenance requirements. They are very fertile and easy fleshing. They are highly mobile grazers that have the ability to browse. They have early carcass maturity and finish well on grass. Mashona excel in hot and/or humid environments with low-quality forages. They work well on endophyte-infected fescue. They have a very high resistance to parasites and disease. Best of all, Mashona is a Bos Taurus breed.

HEAT TOLERANT



Zim Bob

Birth Date: 6/15/15

A2 Beta Casein: A1/A1

Description: Red/Polled (100% Mashona)

Frame: 2.0

Mature Wt.: 1600

Price: \$40/straw

Our Genetic Predictions

Calving Ease: ****

Udder: *****

Fleshing Ability: ****

Disposition: *****



Semen is available for export for \$50 (US) per straw.



Many believe Zim Bob will prove to be the best Mashona bull in modern times. He is a favorite of Jaime Elizondo and Johann Zietsman. We are using Zim Bob heavily to produce some Heat-Tolerant Composite cattle. He is also being heavily used in Australia and Mexico. We recently sold 4000 units to a customer in Paraguay. We sold some semen to a Mashona breeder in Zimbabwe where the breed originated to improve his genetics. Zim Bob is co-owned with Luis Valles of La Lagartija Cattle Company in Mexico.

HEAT TOLERANT



Tarzan

Birth Date: 3/15/12

A2 Beta Casein: A2/A2

Description: Dark Red/Scurred (100% Mashona)

Frame: 3.5

Mature Wt.: N/A

Price: \$35/straw



Our Genetic Predictions

Calving Ease: ****

Udder: *****

Fleshing Ability: *****

Disposition: *****

Prior to Zim Bob, Tarzan was the most favored and heaviest used Mashona bull in the PCC program. We used him on our thick, easy-fleshing Red Angus cows. The results have been very impressive! Check out the picture of our Diamond bull. Tarzan does NOT have horns! Those are scurs; they are not attached to the skull. Tarzan is co-owned with D Bar 7 Ranch in Indiana and Walker Cattle Company in Missouri. **Limited semen inventory.**



Hondo

Birth Date: 3/18/19

A2 Beta Casein: A2/A2

Description: Black/Polled (50% Mashona; 50% Red Angus)

Frame: 4.0 (est)

Mature Wt.: N/A

Price: \$10/straw

Our Genetic Predictions

Calving Ease: ****

Udder: *****

Fleshing Ability: *****

Disposition: ****



Semen is available for export for \$20 (US) per straw.

PCC Security 4011S
PCC R2R Everett 4622D
R2R Rachel 874A
PCC R2R Hondo 8000G

PCC Short Cut L05
PCC Colorado Dream P1052
RF 5-Star Gold 4550P
R2R Rachel 874R

Multi-Sire Mashona Bull
Black Mashona 375

Hondo is the result of breeding an extremely thick, easy-fleshing Red Angus bull to a black Mashona cow. Therefore, he is heterozygous black. He was the leadoff Black Composite bull in our 2020 Alabama Sale. Hondo has a very impressive 5+ rating for both hair coat and fly resistance! He is co-owned with the R2 Ranch in Texas and Furracabad Station in Australia.

HEAT TOLERANT



He-Man

Birth Date: 4/22/20

A2 Beta Casein: A2/A2

Description: Red/Polled (25% Mashona; 25% Romo; 50% Red Angus)

Frame: 4.5 (est)

Mature Wt.: N/A

Price: \$30/straw

Our Genetic Predictions

Calving Ease: ****

Udder: *****

Fleshing Ability: ****

Disposition: *****



PCC WCC He-Man 8626H

Tarzan M157
PCC WFF Diamond 7558D
SCCC Ms Emulous Spud 4015B

Garza Romo 650
WFF801F (Romosinuano/Red Angus Cross)
Red Angus Dam

Multi-Sire Mashona Sire
Mashona Dam
PCC REI Super Pud 5216W
WFF Ms Emulous LC 114Y

Romosinuano Sire
Romosinuano Dam
Red Angus Sire
Red Angus Dam

He-Man is a Diamond son out of a 50% Romosinuano cow. Therefore, he is 25% Mashona and 25% Romosinuano. The Romosinuano breed is a tropically-adapted Bos Taurus breed that originated in the Sinú valley of northern Colombia, South America. We really like this breed combination! He-Man has 5-star muscling, thickness and masculinity, along with 4+ fleshing ability. He is co-owned with Walker Cattle Company in Missouri and Beryl Landis in Georgia.



Callado

Birth Date: 3/27/19

A2 Beta Casein: A2/A2

Description: Red/Polled (50% Mashona; 50% Red Angus)

Frame: 4.0 (est)

Mature Wt.: N/A

Price: \$20/straw

Our Genetic Predictions

Calving Ease: ****

Udder: ****

Fleshing Ability: *****

Disposition: *****



PCC R2R Callado 8010G

PCC Little Bear 4114X
R2R Cedar 327B
TR Cedar NT327

OH Colorado Chunky 210
Beckton Angel CB82 JL
PCC DC Meatball 5017X
TR Cedar NT327

Callado is a very impressive Quieto son out of a powerful Red Angus cow that goes back to our all-time favorite Angel cow. He was a very popular bull at our 2020 Alabama Sale. When evaluated prior to the sale, Callado received impressive 5-star scores for fleshing ability, muscling, thickness, masculinity, hair coat and overall rating. He is co-owned with the R2 Ranch in Texas and Landrigan Livestock in Nebraska.

HEAT TOLERANT



Generalissimo

Birth Date: 3/23/19

A2 Beta Casein: A2/A2

Description: Red/Polled (50% Romosinuano; 50% Red Angus)

Frame: 4.5 (est)

Mature Wt.: N/A

Price: \$15/straw

Our Genetic Predictions

Calving Ease: ****

Udder: *****

Fleshing Ability: *****

Disposition: *****

PCC LLL Johnny Mizzou 5916W	PCC Johnny B Good 4003R
PCC Jaw Dropper 4007D	LLL Shorty's Blackbird 404
PCC TB Weave 5048R	MH Magua 27
PCC D-7 Generalissimo 7700G	PCC Enamor 372
Panchico	Romosinuano Sire
Romosinuano Dam E353	Romosinuano Dam
Romosinuano Dam	Romosinuano Sire
	Romosinuano Dam

The Romosinuano breed is a tropically-adapted *Bos Taurus* breed that originated in the Sinú valley of northern Colombia, South America — near the equator. They appear to be the most heat tolerant of the various breeds we are working with. Generalissimo is the result of breeding a Romo cow to an extremely stout Johnny Mizzou son. He was the best of the five Romo-cross bulls we sold in our 2020 Alabama sale. Generalissimo was the only one of the five with 5-star fleshing ability. He was also the only one that combined a 5+ hair coat with 5+ fly resistance. He is co-owned with the D Bar 7 Ranch in Indiana.

SOUTH POLL



Sire of Go Get 'Em

Go Get 'Em

Birth Date: 3/28/19 **Reg. # :** 41659 **A2 Beta Casein:** A2/A2

Description: Red/Polled (100% South Poll)

Frame: 4.0 (est) **Mature Wt.:** N/A **Price:** \$15/straw

Our Genetic Predictions

Calving Ease: ****	Udder: ****
Fleshing Ability: ****	Disposition: *****

PCC OH Go Get 'Em 8106G

Holiday 1123
OF Otium's Osceola
JL 869 4029 041411

BTF 4401 Dynamite 9401
VLCC 9401 5422 25
BTF 3422 2001 5422

BTF Bonafide 5447 9405
BTF 240 1572 4206
MT 416 Dandy 869
MT 4029

BTF 0446 M446 4401
BTF 5430 B0358
BTF 1742 1960 3422
BTF 6530 0891 TS 2001

South Poll is a relatively new composite breed that was created by Teddy Gentry. It has a locked-in breed combination of 25% Red Angus, 25% Polled Hereford, 25% Senepol and 25% Barzona. Although this breed is very heat tolerant, it will perform very well in more temperate climates. They grow hair when they need to. Go Get 'Em was the leadoff bull in our first-ever Alabama Bull Sale. He has a dog-gentle 5+ disposition. He also has 5+ grass efficiency, muscling and masculinity. He combines a 5-star hair coat with 4+ fly resistance. Go Get 'Em is co-owned with Bent Creek Farm in Virginia and Ozark Hills Genetics in Missouri.



El Jefe

Birth Date: 8/23/21 **Reg. # :** 46709 **A2 Beta Casein:** A2/A2

Description: Red/Polled (100% South Poll)

Frame: 4.0 (est) **Mature Wt.:** N/A **Price:** \$10/straw

Our Genetic Predictions

Calving Ease: ****	Udder: *****
Fleshing Ability: ****	Disposition: *****

PCC OH EL JEFE 8170J

33737 Holiday 9405 1307 1712
36305 Holiday 1712 00513 1586
34178 Holiday 00513

32700 SVR RH60 1572 12410
40452 ECC 12410 525 8019
40427 ECC 97 307 525

31964 BTF Bonafide 5447 9405
24047 BTF 9513 MRS 1307
32683 Holiday 869 9408 Romeo 0428
32058 HH 1549 RH470 88

31172 BTF 1542 Cassanova RH60
31095 UGA 1512 1572 4213
32298 MR. Stone House 7701 1710 907
34972 ECC 778 055 307

El Jefe was the leadoff South Poll bull in our 2023 Texas Sale. He is out of a six-year-old cow with a perfect udder. El Jefe has impressive 5-star ratings for masculinity, thickness, overall rating, hair coat and disposition. With a 63-pound birth weight and a birth weight ratio of 106%, we think he will prove to have superb calving ease. El Jefe is co-owned with Ozark Hills Genetics in Missouri.

PHARO CATTLE COMPANY™
44017 COUNTY ROAD Z
CHEYENNE WELLS, CO 80810

PRSRT STD
US POSTAGE PAID
PERMIT NO. 28
Grand Island, NE

Phone: 1-800-311-0995

Email: Kit@PharoCattle.com
Tyson@PharoCattle.com

Website: PharoCattle.com

ADDRESS SERVICE REQUESTED



The Biggest and Best Selection of
Low-Maintenance, Grass-Based Genetics
In the World