



# HOUSE OF HEARTHESIDE

## EMPLOYEE DIRECTORY



Coldwell Banker Hearthside is a family-run company built on integrity, expertise, and a belief in the power of people working together to create positive change in the communities we serve across Pennsylvania and New Jersey.

Since 1991, our mission has been to deliver an unmatched experience—for every buyer, seller, agent, and employee. We invest in high performers through ongoing training and development, equipping them to tackle any real estate challenge with confidence and care.

Rooted in values like trust, loyalty, and fairness, we've grown into a market leader with deep community ties and a reputation for excellence. Financially strong and locally focused, we take pride in doing good work with great people.

At the core of it all? We treat everyone like family. Always have. Always will.



## *Jamie Mancuso*

### **Chief Executive Officer**

As the Chief Executive Officer of all of the entities under the Cross Keys Management umbrella, Jamie Mancuso is responsible for the corporate direction and strategic growth of the company, with a focus on residential and commercial real estate operations, exceptional service for buyers and sellers, and recruitment and retention of the area's most talented real estate professionals.

As the son of Coldwell Banker Hearthside founder and chairman Frank Mancuso, Jamie is committed to ensuring an unsurpassed experience for every buyer, seller, agent, and employee.

## *Robin Mancuso*

### **Chief Operating Officer**

As Chief Operating Officer of all of the entities under the Cross Keys Management umbrella, Robin Mancuso oversees day-to-day operations of the company with an emphasis on providing end-to-end residential and commercial real estate solutions through essential mortgage, title, insurance, land development, and relocation services to clients in search of a trusted partner and simplified one-stop approach.

With her complete understanding of state regulation laws, real estate closing procedures, and the need for a high level of customer service, Robin demonstrates a firm commitment to ensuring all customers enjoy an exceptional transactional experience from start to finish.





## *Cliff Lewis*

### **Chief of Growth & Acquisitions**

As Chief of Growth and Acquisitions, Cliff spearheads expansion by identifying and exploring new market opportunities, ensuring a smooth path for growth and innovation. He helps lead negotiations with prospective partners and acquisitions, bringing strategic insight and precision to every deal.

As founder and leader of the Cliff Lewis Experience team, Cliff's role goes beyond growth and transactions, he serves as a mentor and coach to leaders and agents alike —helping them maximize their potential and embrace new opportunities for success.

---

**TRUE STRENGTH LIES IN LEADING WITH  
INTEGRITY, STANDING BY OUR VALUES, AND  
LIFTING EACH OTHER LIKE FAMILY.**

---

# CBH OFFICE LOCATIONS



[WWW.CBHRE.COM](http://WWW.CBHRE.COM)

# CORE SERVICES



Multiple Locations  
484-284-9270  
E: [Info@ConnectClosing.com](mailto:Info@ConnectClosing.com)  
W: [ConnectClosing.com](http://ConnectClosing.com)



Newtown: 215-322-6633  
Bethlehem: 610-489-3073  
E: [Info@SkyClosings.com](mailto:Info@SkyClosings.com)  
W: [SkyClosings.com](http://SkyClosings.com)



212 N. Main St., Doylestown, PA  
267-352-9120  
E: [Marketing@BlueEdgeTeam.com](mailto:Marketing@BlueEdgeTeam.com)  
W: [BlueEdgeTeam.com](http://BlueEdgeTeam.com)



488 Norristown Road, Suite 241  
Blue Bell, PA 19422  
610-234-3840  
E: [Info@BSkyLoans.com](mailto:Info@BSkyLoans.com)  
W: [BlueSkyHomeFinance.com](http://BlueSkyHomeFinance.com)

# OPPORTUNITIES



100 Brandywine Blvd, 1st Fl.  
Newtown, PA 18940  
215-489-6100



100 Brandywine Blvd, 1st Floor  
Newtown, PA 18940  
215-489-6100  
E: [Info@SkyLeads.com](mailto:Info@SkyLeads.com)



100 Brandywine Blvd, 1st Floor  
Newtown, PA 18940  
Phone: 267-350-5555  
[www.cbhre.com/relocation](http://www.cbhre.com/relocation)



# HEARTHSIDE

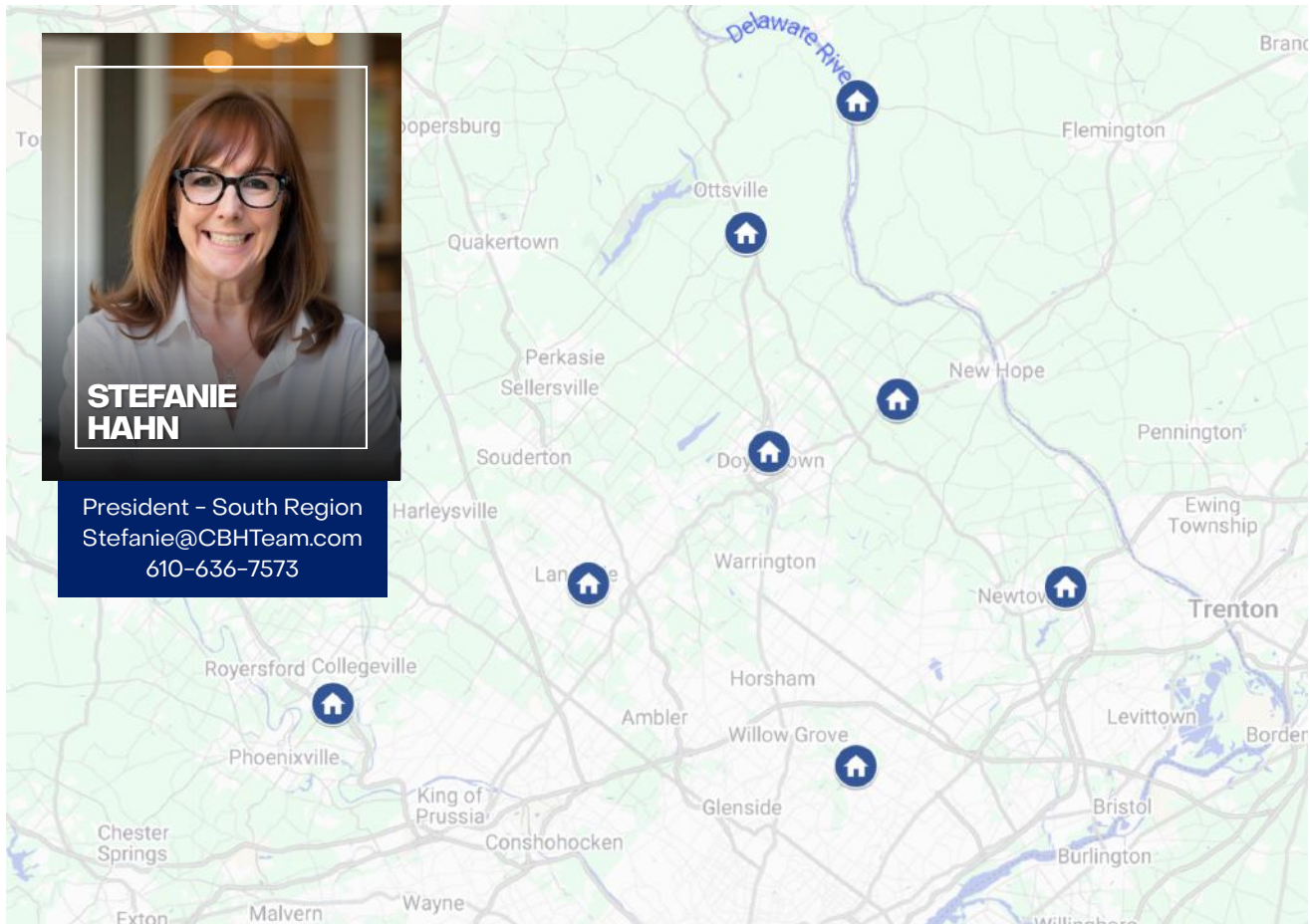
AT YOUR SIDE

Hearthside At Your Side is an agent-led initiative that focuses on giving back to community organizations within the Coldwell Banker Hearthside footprint in various areas such as: those in need, military families, local food banks, adopt-a-pet programs and much more.

Coldwell Banker Hearthside has a long-standing heritage of community giving. With more than 500+ agents and 50 employees, we have significant reach into the areas and neighborhoods where we operate, and it's through that reach that we can make a real difference.



# COMPANY LEADERSHIP



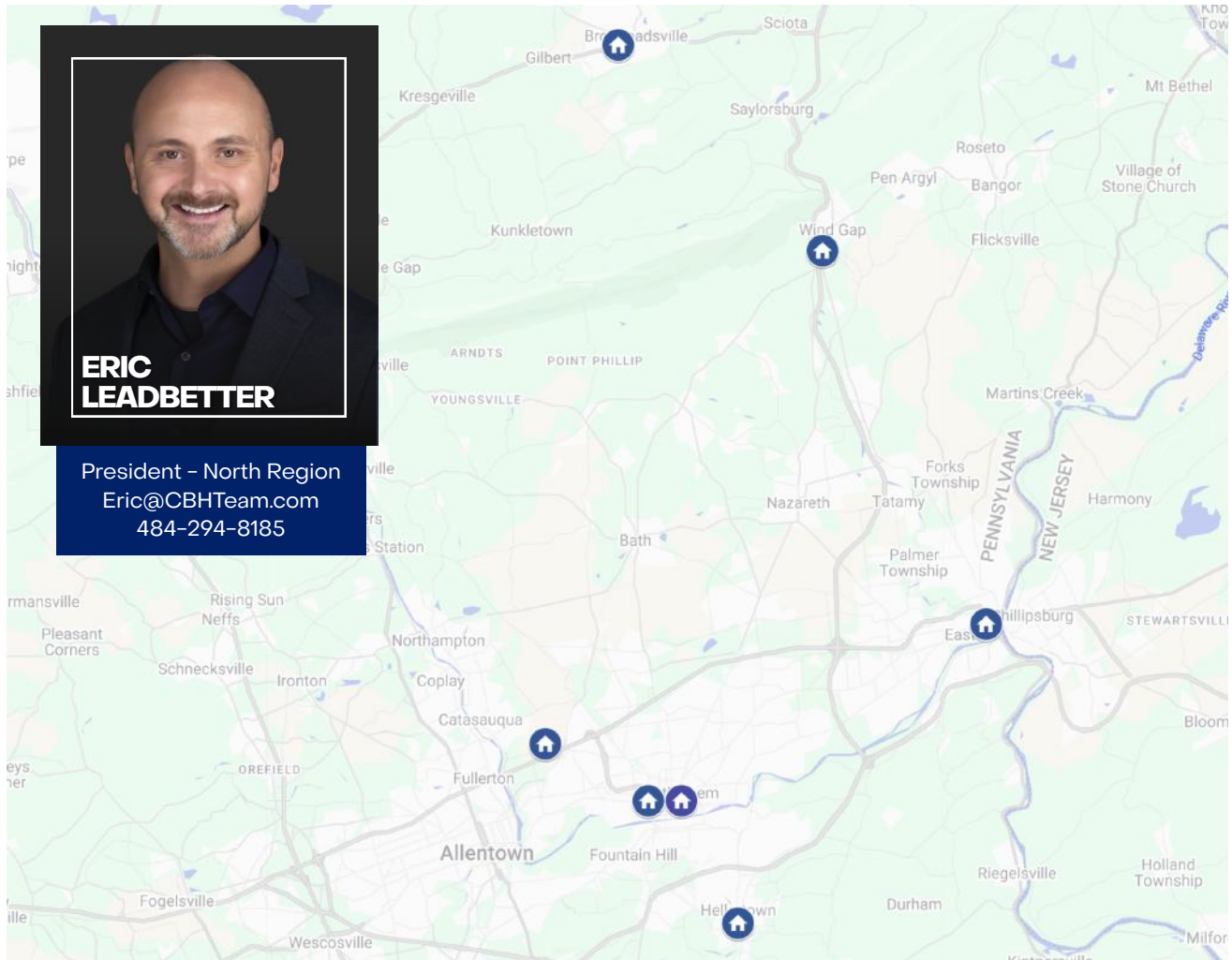
## *President - Delaware Valley Region*

Stefanie Hahn is driven by growth—bringing in talented agents, helping them crush their goals, and building a culture they're proud to be part of. She leads with heart and hustle, building strong teams, smart systems, and big opportunities for the people around her.

As a real estate exec, Stefanie focuses on what moves the needle: strategic recruiting, retention, and building real relationships—within the company, across the industry, and out in the community. Challenges? That's her zone. Whether she's solving a problem, building a strategy, or rolling up her sleeves to get it done, she's all in.

Her mission? Empower people, support smart growth, and create a place where success isn't just possible—it's expected.

# COMPANY LEADERSHIP



## *President - North Region*

From solo agent to powerhouse team leader, Eric Leadbetter's real estate journey is all about grit, growth, and helping others level up. Over the past decade, he's built a high-performing team of 18, owned multiple brokerages, and coached countless agents toward success.

He's known for his ability to tap into what drives people and show them what's possible —with "I am determined to make this work" as both a personal mantra and a mindset he shares with others.

Named one of the Most Influential Men in the Lehigh Valley, Eric brings heart, hustle, and a sharp eye for talent to every part of the business. Whether it's building teams or guiding clients, he's focused on creating a real estate experience that's second to none.



# COLDWELL BANKER | HEARTHSIDE Company Leadership



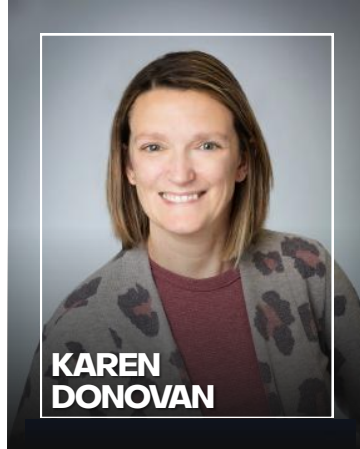
**EMILEE  
COOGAN**

Communication & Engagement  
Emilee@CBHteam.com



**LEAH  
D'ANGELO**

Director of Marketing  
Leah@BlueEdgeTeam.com



**KAREN  
DONOVAN**

Director of Connect Closing  
Karen@ConnectClosing.com



**ANGELA  
FELVER**

Accounting Manager  
AngelaF@CrossKeysTeam.com



**PAUL  
KERNICKY**

Director of IT  
Paul@CBHTeam.com



**FRANK  
MANCUSO**

Partner - Blue Sky Home Finance  
FMancuso@BSkyLoans.com



**KELLIE  
MITCHELL**

Director of Relocation  
Kellie@CBHrelo.com



**JACQUIE  
NACE**

Sky Settlement Manager  
Jacquie@SkyClosings.com



**DONNA  
SACCO**

Director Agent Development  
Donna@CBHTeam.com



**NICK  
SMITH**

Lead Center Manager  
Nick@CBHTeam.com



**TRACEY  
ZARZYCKI**

Lead Center Director  
Tracey@CBHrelo.com

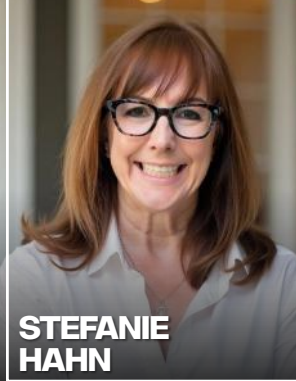


# COLDWELL BANKER | HEARTHSIDE Regional & Office Leadership



**ERIC  
LEADBETTER**

President - North Region  
Eric@CBHTeam.com



**STEFANIE  
HAHN**

President - South Region  
Stefanie@CBHTeam.com



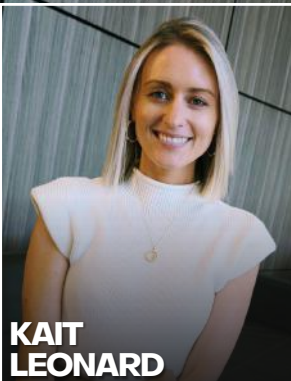
**DONNA  
SACCO**

Director Agent Development  
Donna@CBHTeam.com



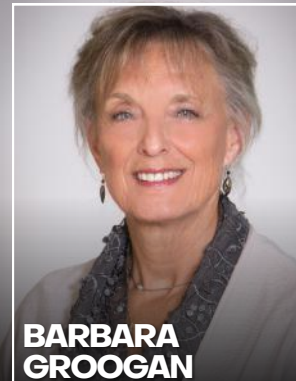
**VINCE  
RANGE**

Collegetown Manager  
Vince@CBHTeam.com



**KAIT  
LEONARD**

Doylestown Sales Director  
Kait@CBHTeam.com



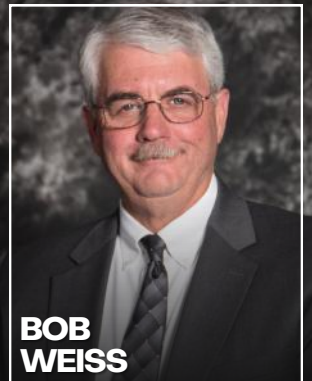
**BARBARA  
GROOGAN**

Frenchtown Manager  
Barbara@CBHTeam.com



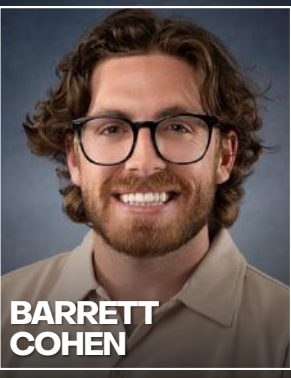
**LARRY  
BONNER**

Hellertown Manager  
Larry@CBHTeam.com



**BOB  
WEISS**

Huntingdon Valley Manager  
Bob@CBHTeam.com



**BARRETT  
COHEN**

Huntingdon Valley Sales Director

Huntingdon Valley Sales Director  
Barrett@CBHTeam.com



**LARRY  
PESESKI**

Commercial Manager  
PeseskiAndAssociates@gmail.com



**CHRIS  
HARDING**

Newtown Sales Director  
Chris@CBHTeam.com



**JOHN  
SUCHY**

Ottsville Manager  
John@CBHTeam.com



# COLDWELL BANKER | HEARTHSIDE Support Departments

## FINANCE



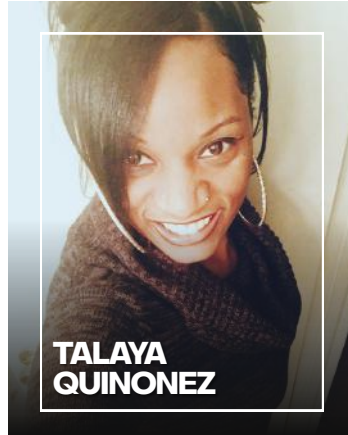
**ANGELA  
FELVER**

Accounting Manager  
AngelaF@CrossKeysTeam.com



**MATT  
MAKOS**

Accounting Manager  
Matt@CrossKeysTeam.com



**TALAYA  
QUINONEZ**

Commissions & Escrows  
Talaya@CrossKeysTeam.com



**BEN  
RITZHEIMER**

Finance Associate  
Ben@CrossKeysTeam.com

## TECHNOLOGY



**PAUL  
KERNICKY**

Director of IT  
Paul@CBHTeam.com



**ALEX  
OLAH**

IT Specialist  
Alex@CBHTeam.com



**MIKE  
MOYER**

IT Specialist  
Mike@CBHTeam.com

## OFFICE COORDINATORS & COMPLIANCE



**DIANE  
BONDURA**

Office Coordinator & Compliance  
Diane@CBHteam.com



**JUDY  
HEALEY**

Office Coordinator & Compliance  
Judy@CBHteam.com



**ANGI  
JASIONOWSKI**

Operations Admin  
Angela@ConnectClosing.com



**KELLY  
VAN OSTEN**

Office Coordinator & Compliance  
Kelly@CBHteam.com



# COLDWELL BANKER | HEARTHSIDE Support Departments

## AGENT GROWTH & DEVELOPMENT



**RYAN  
SEGURA**

Agent Growth & Development  
Specialist  
Ryan@CBHteam.com

## ONBOARDING & ENGAGEMENT



**EMILEE  
COOGAN**

Onboarding and Engagement  
Specialist  
Emilee@CBHteam.com

## SOCIAL MEDIA



**JEREMY  
BRANDT**

Company Social Media  
Jeremy@CBHteam.com

## OPERATIONS AND EDUCATION



**MAKAYLA  
DORIETY**

Operations & Education  
Makayla@CBHteam.com

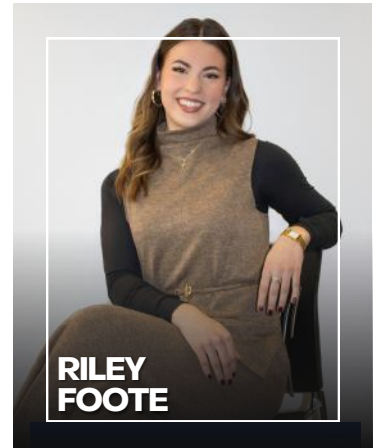
## TRANSACTION COMPLIANCE



**PAUL  
MYERS**

Compliance  
PaulM@CBHteam.com

## NORTH REGION RECRUITER



**RILEY  
FOOTE**

Recruiter  
Riley@CBHteam.com

## SKY LEADS



**TRACEY  
ZARZYCKI**

Lead Center Director  
Tracey@CBHrelo.com

## BLUE SKY LEADS



**NICK  
SMITH**

Lead Center Manager  
Nick@CBHTeam.com



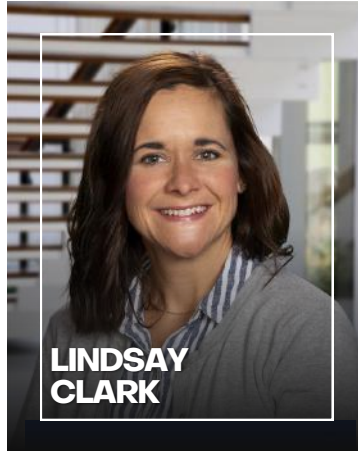
# Support Departments

## BLUEEDGE MARKETING



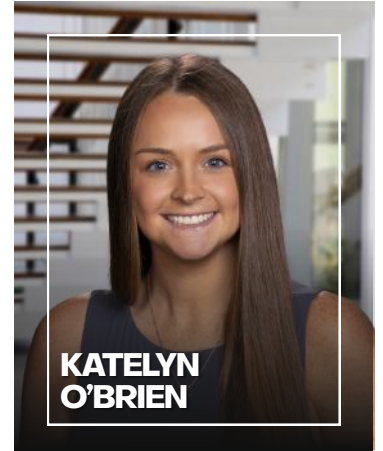
**LEAH  
D'ANGELO**

Director of Marketing  
Leah@BlueEdgeTeam.com



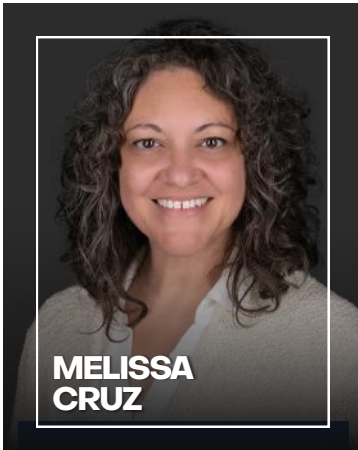
**LINDSAY  
CLARK**

Marketing Advisor  
Lindsay@BlueEdgeTeam.com



**KATELYN  
O'BRIEN**

Marketing Advisor  
Katelyn@BlueEdgeTeam.com



**MELISSA  
CRUZ**

Marketing Advisor  
Melissa@BlueEdgeTeam.com



**LAUREN  
GOODYEAR**

Marketing Advisor  
Lauren@BlueEdgeTeam.com



**STEPHANIE  
WASHINGTON**

Marketing Advisor  
Stephanie@BlueEdgeTeam.com

## CORPORATE RELOCATION



**KELLIE  
MITCHELL**

Director of Relocation  
Kellie@CBHrelo.com

## RELOCATION AGENT SUCCESS



**MARGE  
WINGATE**

Relocation Agent Success  
Marge@CBHrelo.com

MEET OUR  
**CONNECT**  
CLOSING   
TEAM

---

**YOUR TRANSACTION  
ASSISTANTS**



**Karen Donovan**  
Transaction Operations Mgr.  
Karen@ConnectClosing.com  
610-858-8264



**Keyla  
Machado-Gabriel**  
Transaction Coordinator  
Processor  
Keyla@ConnectClosing.com  
610-858-7951



**Christina Hilferty**  
Transaction Coordinator  
Processor  
Christina@ConnectClosing.com  
610-858-7406



**Joe Kelly**  
Transaction Coordinator  
Processor  
Joe@ConnectClosing.com  
610-858-8364



**Chrissy Smythe**  
Transaction Coordinator  
Processor  
Chrissy@ConnectClosing.com  
610-858-3948

**WHAT OUR AGENTS SAY...**

"I had no idea that transaction coordination existed before. The checklist of items that my TC handled was very thorough and customized to me." - John

---

"My TC was incredible. I cannot imagine doing another transaction without her!" - Sheila

---

"Awesome. Just awesome." - Nick



**Jacquie Nace**  
Title Operations Manager  
Jacquie@SkyClosings.com  
610-349-7966



**Frank Amari**  
Settlement Closer  
Frank@SkyClosings.com  
610-349-9255



**Terry Forte**  
Settlement Closer  
Terry@SkyClosings.com  
610-349-3118



**Kristen Hamm**  
Settlement Closer  
Kristen@SkyClosings.com  
610-737-6599



**Kim Heit**  
Settlement Closer  
Kim@SkyClosings.com  
610-349-8589



**Barbara Mims**  
Settlement Closer  
Barbara@SkyClosings.com  
610-737-5872



**Lisa Roach**  
Settlement Closer  
Lisa@SkyClosings.com  
610-349-9394



**Krista Reichel**  
Settlement Closer  
Krista@SkyClosings.com  
610-737-1016



**Tina McGuire**

Title Curative Manager  
Tina@SkyClosings.com  
610-858-0105



**Ashley Hepler**

Title Curative Processor  
Ashley@SkyClosings.com  
610-858-8611



**Kaylynn Ramos**

Title Curative Processor  
Kaylynn@SkyClosings.com  
267-846-0978



**Cheryl Salib**

Title Curative Processor  
Cheryl@SkyClosings.com  
610-737-1309



**Jennifer Strohl**

Title Curative Processor  
Jennifer@SkyClosings.com



**Vicki Esterly**

Pre & Post Closing Processor  
Vicki@SkyClosings.com  
484-519-2594



**Nancy Magobet**

Post Closing Processor  
Nancy@SkyClosings.com  
267-598-3936



**Dana Cook**

Pre & Post Closing Manager  
Dana@SkyClosings.com  
267-598-3932



**Kelly Griffith**

Order Data Entry  
Kelly@SkyClosings.com  
215-694-5989

# Meet Our **BLUE SKY** Team

HOME FINANCE



**FRANK MANCUSO**  
MANAGING PARTNER

215-801-8799  
FMancuso@BSkyLoans.com  
NMLS# 122891  
FrankMancusoBlueSky.com



**DARCY TERMAN**  
LOAN OFFICER

267-246-7500  
DTerman@BSkyLoans.com  
NMLS# 1878894  
DarcyTermanBlueSky.com



**ALEX PECORA**  
LOAN OFFICER

609-558-1895  
APecora@BSkyLoans.com  
NMLS# 2214399  
AlexBlueSky.com



**FRANCESCA MANCUSO**  
LOAN OFFICER

215-774-2666  
Francesca@BSkyLoans.com  
NMLS# 2644299  
FrancescaBlueSky.com



**JUSTIN LEE**  
LOAN OFFICER

484-747-1839  
JLee@BSkyLoans.com  
NMLS# 1680067  
JustinBlueSky.com

## OUR MISSION

To serve our customers with honesty, integrity and competence.

## OUR GOAL

To provide home loans to our clients while providing them with the lowest interest rates and closing costs possible.



# CBH OFFICES

## ALLENTOWN

968 Postal Road, Suite 210  
Allentown, PA 18109  
Phone: 610-465-5600

## BETHLEHEM (LINDEN)

622 Linden Street  
Bethlehem, PA 18018  
Phone: 610-936-9953

## DOYLESTOWN

212 N. Main Street  
Doylestown, PA 18901  
Phone: 215-340-3500

## FRENCHTOWN

57 Bridge Street  
Frenchtown, NJ 08825  
Phone: 908-996-7151

## HUNTINGDON VALLEY

2600 Philmont Ave, Suite 100  
Huntingdon Valley, PA 19006  
Phone: 215-379-2002

## LANSDALE

600 E. Main Street  
Lansdale, PA 19446  
Phone: 215-855-5600

## OTTSVILLE

7531 Easton Road  
Ottsville, PA 18942  
Phone: 610-847-3300

## SLATE BELT/WIND GAP

31 W. 1st Street  
Wind Gap, PA 18091  
Phone: 610-863-8444

## BETHLEHEM (BROAD)

316 W Broad Street  
Bethlehem, PA 18018  
Phone: 610-936-9960

## COLLEGEVILLE

100 Springhouse Drive, Suite 100  
Collegeville, PA 19426  
Phone: 610-489-7700

## EASTON

60 North 4th Street  
Easton, PA 18042  
Phone: (484) 838-1004

## HELLERTOWN

186 Main Street  
Hellertown, PA 18055  
Phone: 610-838-0440

## LAHASKA

5895 Lower York Road, P.O. Box 299  
Lahaska, PA 18931  
Phone: 215-794-1070

## NEWTOWN

100 Brandywine Blvd., 1st Floor  
Newtown, PA 18940  
Office: 267-350-5555

## POCONO

1656 Rt. 209, Unit 13  
Brodheads ville, PA 18322  
Phone: 610-936-9953



**COLDWELL BANKER**  

---

**HEARTHSIDE**