

im **imagemakers**

CORPORATE FASHION



# STYLE REFERENCE

Catalogue 35 / V5 26

# LADIES SUITING WAISTCOATS

## SHAKIRA WAISTCOAT

### FITTED

Waistcoat, Tie Buckle,  
Mock Pockets, LINED

#### LENGTH

Approx. 52cm centre back

#### SIZES

26 - 54

Model wears size 32

SIZES 26 - 48

**R645.00**

SIZES 50 - 54

**R680.00**



Approx. 52cm centre back

RUBY RED

SANDSTONE

PLATINUM

GREY PINSTRIPE

SHADOW

GUNMETAL GREY

# KENDALL WAISTCOAT

## REGULAR FIT

Fashionable Gilet, Inseam Pockets, Back Buckle Detail, Side Slits, LINED

### LENGTH

Approx. 78cm centre back

### SIZES

28 - 54

SIZES 28 - 48  
**R860.00**

SIZES 50 - 54  
**R920.00**



Model wears size 32

Model wears size 42



Approx. 78cm centre back

# LADIES SUITING JACKETS

## ARIANA JACKET

### REGULAR FIT

Long Sleeve Double  
Breasted Peak Lapel,  
Flap Pockets, LINED

#### LENGTH

Approx. 69cm centre back

#### SIZES

28 - 44

\*Optional +5cm sleeve length

Model wears size 32

SIZES 28 - 44  
**R990.00**



RUBY RED

SANDSTONE

PLATINUM

GREY PINSTRIPE

SHADOW

GUNMETAL GREY

# BETH JACKET

## FITTED

Short Sleeve, Peak Lapel,  
2 Button, Flap Pockets,  
LINED

## LENGTH

Approx. 70cm centre back

## SIZES

28 - 54

SIZES 28 - 48  
**R890.00**

SIZES 50 - 54  
**R950.00**



# LADIES SUITING JACKETS

## PAMELA JACKET

### FITTED

Long Sleeve Fitted Jacket,  
Wide notch lapel, Flap  
Pockets, Hip Length, LINED

#### LENGTH

Approx. 66cm centre back

#### SIZES

26 - 48

\*Optional +5cm sleeve length

Model wears size 32

SIZES 26 - 48  
R1020.00



### MACHINE WASHABLE

All garments are machine  
washable, including our  
blazers and jackets.



RUBY RED

SANDSTONE

PLATINUM

GREY PINSTRIPE

SHADOW

GUNMETAL GREY



Model wears size 42

Model wears size 32

# CHARLI JACKET

## REGULAR FIT

Long Sleeve Jacket, Wide notch lapel, Regular Fit, 2 Button, LINED

### LENGTH

Approx. 69cm centre back

### SIZES

28 - 54

\*Optional +5cm sleeve length

SIZES 28 - 48
<b>R970.00</b>
SIZES 50 - 54
<b>R1030.00</b>



# LADIES SUITING TOP

## KHOSI TOP

### REGULAR FIT

Short Cap Sleeve,  
Panelled Back Zip, UNLINED

#### LENGTH

Approx. 63cm centre back

#### SIZES

28 - 54

SIZES 28 - 48  
**R510.00**

SIZES 50 - 54  
**R550.00**

Model wears  
size 32

Model wears  
size 42



RUBY RED

SANDSTONE

PLATINUM

GREY PINSTRIPE

SHADOW

GUNMETAL GREY



Model wears size 32

## HANNA PANTS

### REGULAR FIT

High Waist Wide Leg, Pockets

#### LENGTH

Approx. 82cm inside leg

#### SIZES

28 - 48

\*Optional +7cm length

SIZES 28 - 48  
R580.00

# LADIES SUITING PANTS



Model wears size 32

## CAPRICE PANTS

### FITTED

Mid Rise, Skinny Cropped Pants with Side Slit

#### LENGTH

Approx. 68cm inside leg

#### SIZES

26 - 48

SIZES 26 - 48  
R580.00

RUBY RED

SANDSTONE

PLATINUM

GREY PINSTRIPE

SHADOW

GUNMETAL GREY



Model wears size 32

## CHRISTINE PANTS

### REGULAR FIT

Mid Rise, Classic Straight Leg Pants, Improved fit

#### LENGTH

Approx. 79cm inside leg

#### SIZES

26 - 48

\*Optional +7cm length

SIZES 26 - 48  
R580.00



**MACHINE  
WASHABLE**

All garments are machine washable, including our blazers and jackets.

# LADIES SUITING PANTS

## HELGA PANTS

### RELAXED FIT

High Rise, Partly Elasticated, Adjustable Waist, Pockets

#### LENGTH

Approx. 79cm inside leg

#### SIZES

28 - 54

\*Optional +7cm length

SIZES 28 - 48

**R580.00**

SIZES 50 - 54

**R620.00**



Approx. 79cm inside leg

Model wears size 44

Model wears size 32



RUBY RED

SANDSTONE

PLATINUM

GREY PINSTRIPE

SHADOW

GUNMETAL GREY

# MALEBO PANTS

## RELAXED FIT

High Waist, Curvy Fit,  
Part Elastic Straight Leg, Pockets

### LENGTH

Approx. 79cm inside leg

### SIZES

28 - 54

\*Optional +7cm length

SIZES 28 - 48  
**R580.00**

SIZES 50 - 54  
**R620.00**



Approx. 79cm inside leg

Model wears  
size 32

Model wears  
size 44



# LADIES SUITING DRESSES

## LOUISE DRESS

### REGULAR FIT

Short Sleeve, A-Line Dress,  
UNLINED

#### LENGTH

Approx. 98cm centre back

#### SIZES

28 - 54

\*Optional +10cm length

SIZES 28 - 48  
**R790.00**

SIZES 50 - 54  
**R840.00**



RUBY RED

SANDSTONE

PLATINUM

GREY PINSTRIPE

SHADOW

GUNMETAL GREY



Model wears size 32

## RAMONA DRESS

SIZES 26 - 48  
R780.00

### FITTED

Sleeveless Split Neck Shift Dress,  
UNLINED

#### LENGTH

Approx. 98cm centre back

#### SIZES

26 - 48

\*Optional +10cm length



Model wears size 32

## RAVEN DRESS

SIZES 28 - 48  
R860.00

### REGULAR FIT

Sleeveless Double Breast, Peak Lapel,  
Blazer Dress, Belted, Pockets, LINED

#### LENGTH

Approx. 102cm centre back

#### SIZES

28 - 48

# LADIES SUITING SKIRTS

## MBALI SKIRT

### RELAXED FIT

Adjustable Waist 60cm Skirt  
with Optional 10cm  
Extra Length, UNLINED

#### LENGTH

Approx. 60cm centre back

#### SIZES

28 - 54

\*Optional +10cm length

SIZES 28 - 48  
**R530.00**

SIZES 50 - 54  
**R580.00**



Model wears  
size 42

Model wears  
size 32



Approx. 60cm centre back

RUBY RED

SANDSTONE

PLATINUM

GREY PINSTRIPE

SHADOW

GUNMETAL GREY



Model wears  
size 32

## SUSAN SKIRT

### FITTED

60cm Pencil Skirt,  
Mock Welt Pocket,  
UNLINED

#### LENGTH

Approx. 60cm centre back

#### SIZES

28 - 54

SIZES 28 - 48  
**R510.00**

SIZES 50 - 54  
**R550.00**



Model wears  
size 42

## SANDILE SKIRT

### FITTED FIT

Fit and Flare Suiting Skirt,  
UNLINED

#### LENGTH

Approx. 68cm centre back

#### SIZES

28 - 54

SIZES 28 - 48  
**R510.00**

SIZES 50 - 54  
**R550.00**

ALL  
**PEARL  
POLYESTER  
BLOUSES**  
AT A  
GLANCE



NAOMI



ASTRID



ANYA



ROSE



KIM



KOURTNEY



CHANEL



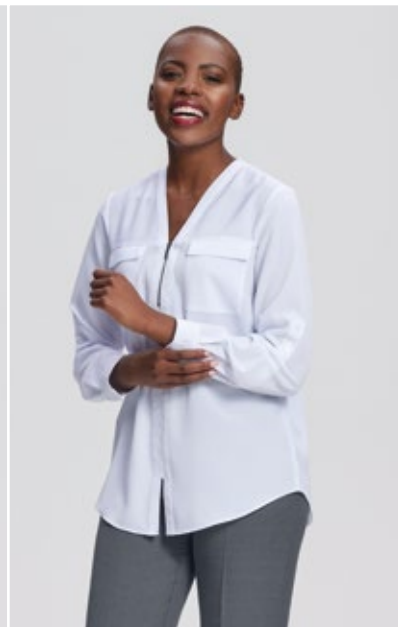
MICHELLE



BECKY



KAYLA



SABRINA

# PEARL POLYESTER BLOUSES

## NAOMI BLOUSE

### REGULAR FIT

Sleeveless V Neck,  
Double Layer Split Front

#### LENGTH

Approx. 64cm centre back

#### SIZES

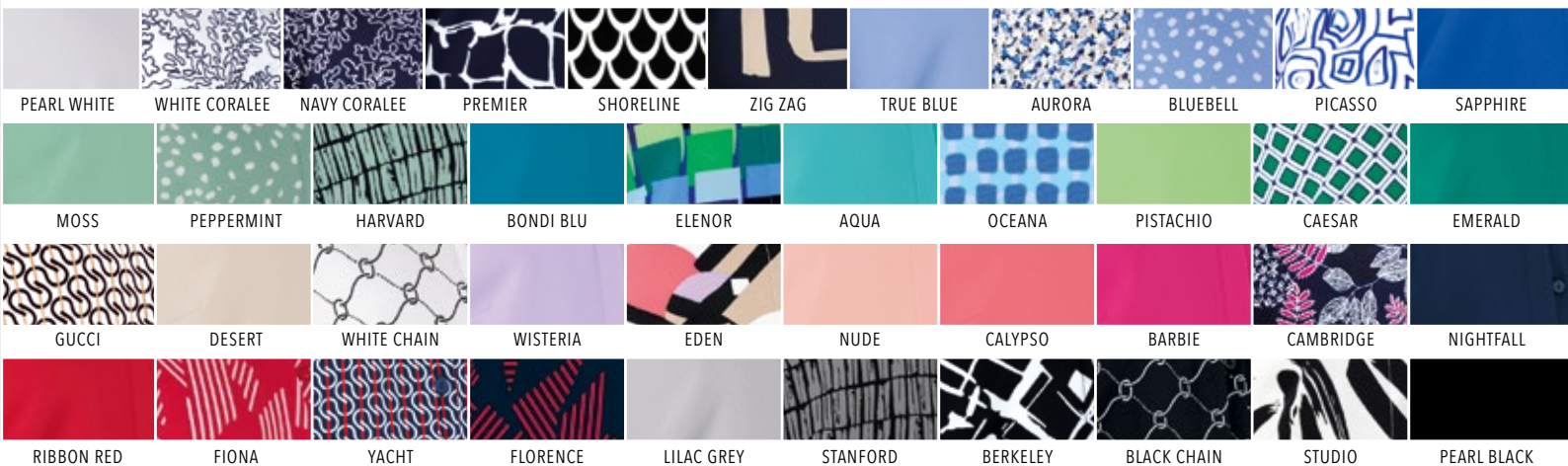
28 - 54

*Model wears size 32*

SIZES 28 - 48  
**R440.00**

SIZES 50 - 54  
**R470.00**

Approx. 64cm centre back



# PEARL POLYESTER BLOUSES

## ANYA BLOUSE

### RELAXED FIT

V-Neck, Double Layer Blouse

#### LENGTH

Approx. 64cm centre back

#### SIZES

26 - 54

\*Optional +10cm extra body length

Model wears size 32

SIZES 26 - 48  
**R550.00**

---

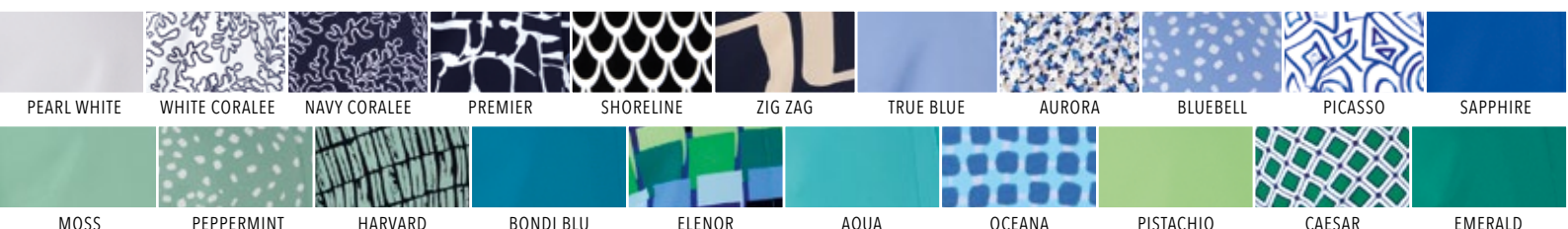
SIZES 50 - 54  
**R580.00**

Approx. 64cm centre back



### NO IRON REQUIRED

All garments are easy care. Just wash and wear and go, go, go!



# ROSE BLOUSE

## RELAXED FIT

Short Sleeve, Front and  
Shoulder Pleats,  
Collared Top

### LENGTH

Approx. 70cm centre back

### SIZES

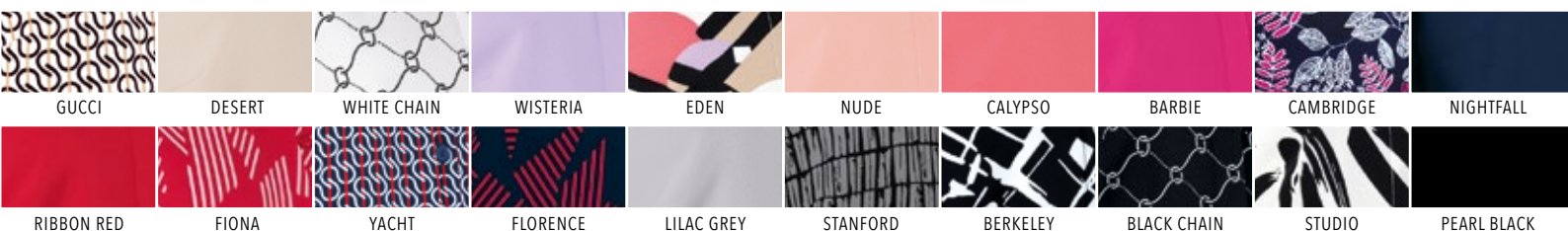
28 - 54

SIZES 28 - 48  
**R520.00**

SIZES 50 - 54  
**R540.00**

Model wears  
size 32

Model wears  
size 42



# PEARL POLYESTER BLOUSES

## ASTRID BLOUSE

**FITTED**

Removable Tie, Mandarin Collar,  
Flutter Sleeve Detailed Top

**LENGTH**

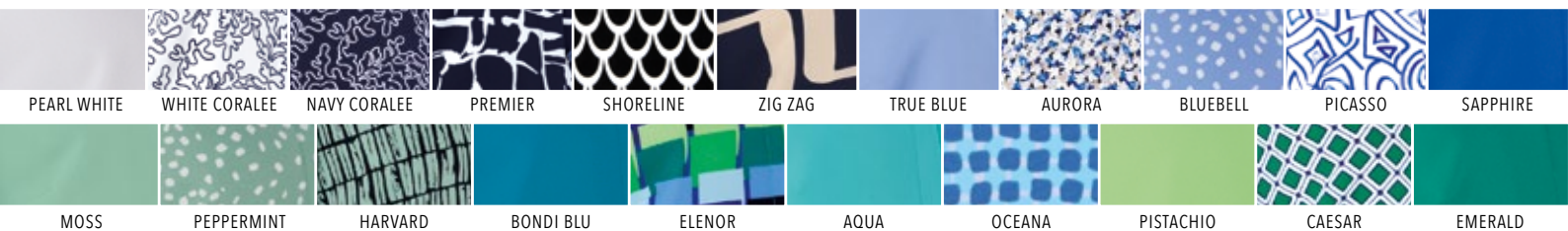
Approx. 64cm centre back

**SIZES**

26 - 48

Model wears size 32

SIZES 26 - 48  
R520.00



**MICHELLE  
BLOUSE**

**FITTED**

3/4 Sleeve Tab, Mandarin Collar,  
2 Button Top

**LENGTH**

Approx. 67cm centre back

**SIZES**

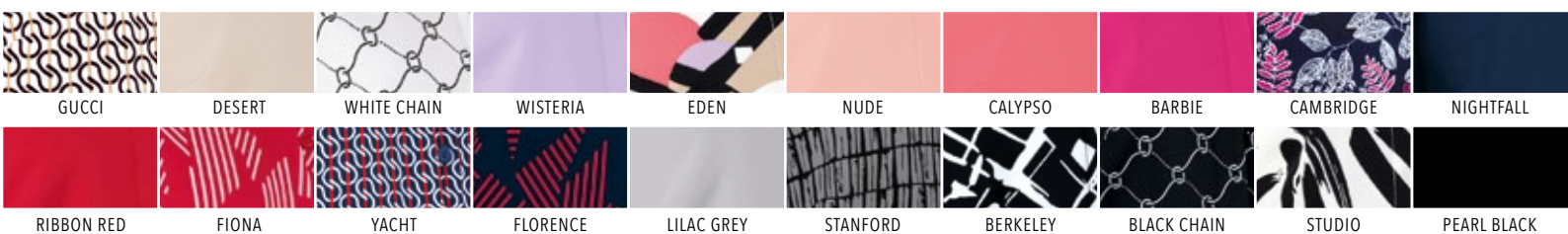
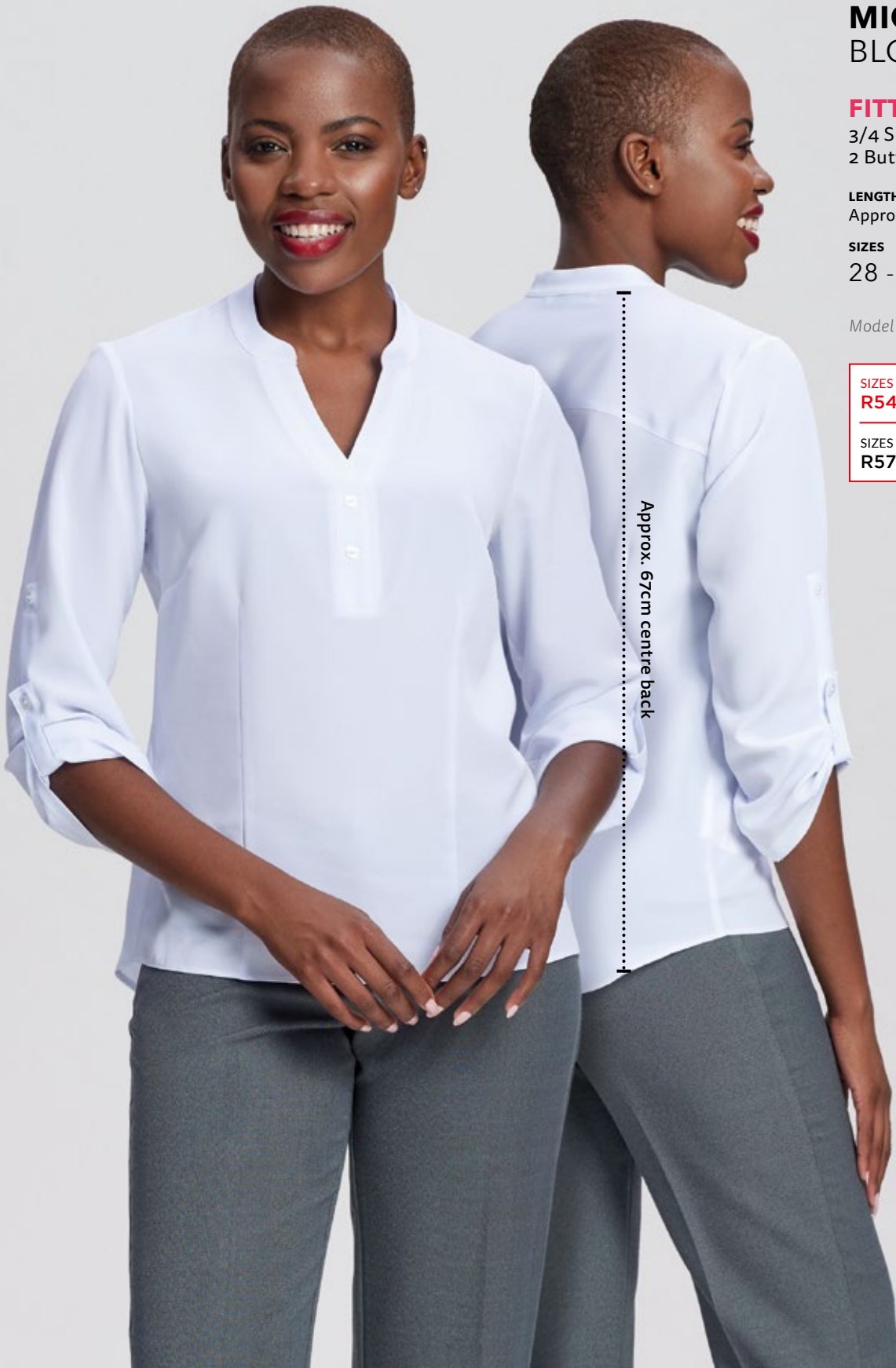
28 - 54

*Model wears size 32*

SIZES 28 - 48  
**R540.00**

SIZES 50 - 54  
**R570.00**

Approx. 67cm centre back



# PEARL POLYESTER BLOUSES

## KIM BLOUSE

**FITTED**

Short Sleeve Tuck Detail,  
Button Down Blouse

**LENGTH**

Approx. 65cm centre back

**SIZES**

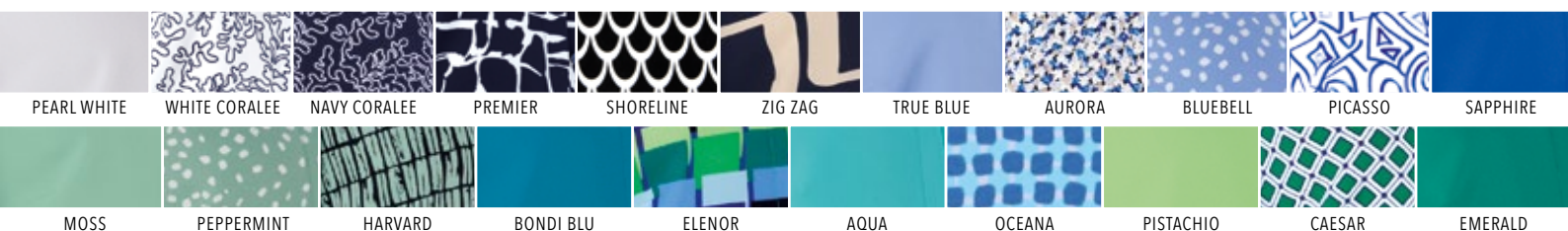
26 - 54

SIZES 26 - 48  
**R440.00**

SIZES 50 - 54  
**R480.00**

Model wears  
size 42

Model wears  
size 32



# KOURTNEY BLOUSE

## FITTED

Long Sleeve Tuck Detail, Button Down Blouse

### LENGTH

Approx. 65cm centre back

### SIZES

26 - 54

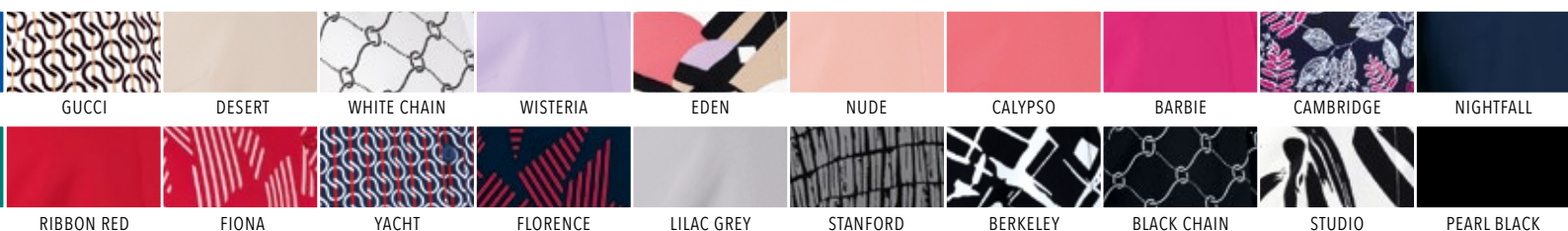
\*Optional +5cm sleeve length

SIZES 26 - 48  
R470.00

SIZES 50 - 54  
R500.00

Model wears size 32

Model wears size 42



# PEARL POLYESTER BLOUSES

## KAYLA BLOUSE

### RELAXED FIT

Long Sleeve, Shawl Neckline,  
Pleat Detailed Top

#### LENGTH

Approx. 70cm centre back

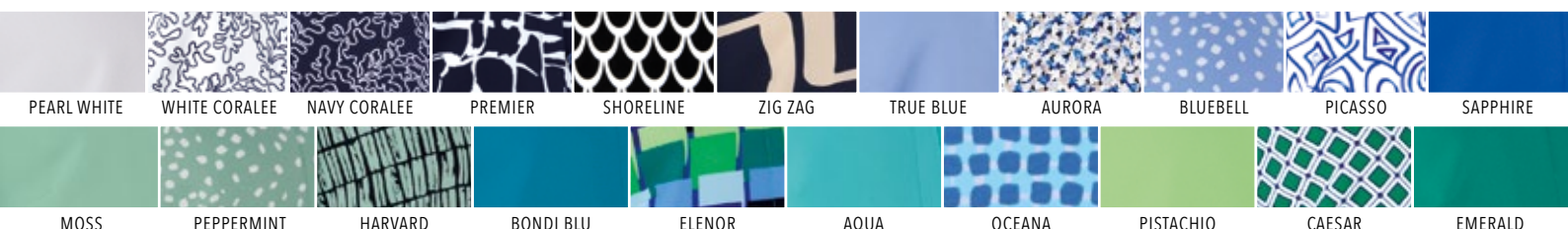
#### SIZES

28 - 48

\*Optional +5cm sleeve length

Model wears size 32

SIZES 28 - 48  
R540.00



# CHANEL BLOUSE

## REGULAR FIT

Long Sleeve Blouse  
with Tie Detail

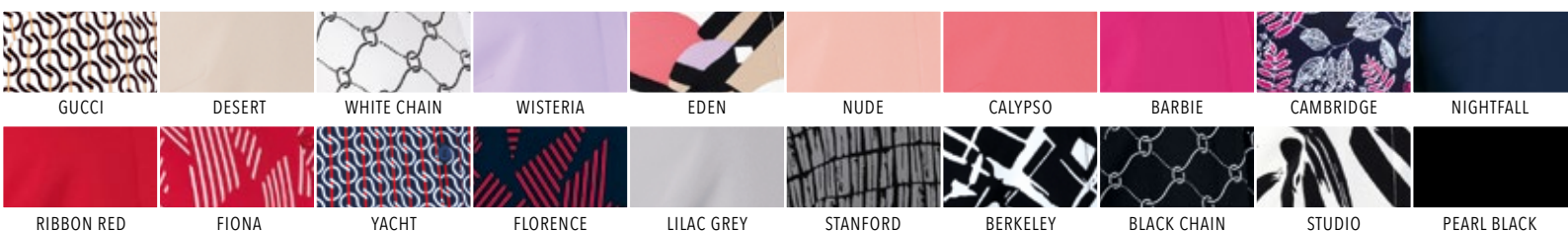
**LENGTH**  
Approx. 67cm centre back

**SIZES**  
28 - 48

*Model wears size 32*

SIZES 28 - 48  
R560.00

Approx. 67cm centre back



# PEARL POLYESTER BLOUSES

## BECKY BLOUSE

### REGULAR FIT

Long Sleeve, Boxy Blouse  
with Curved Hem  
and Wide Cuff

#### LENGTH

Approx. 62cm centre back

#### SIZES

26 - 54

Model wears size 32

SIZES 26 - 48

**R545.00**

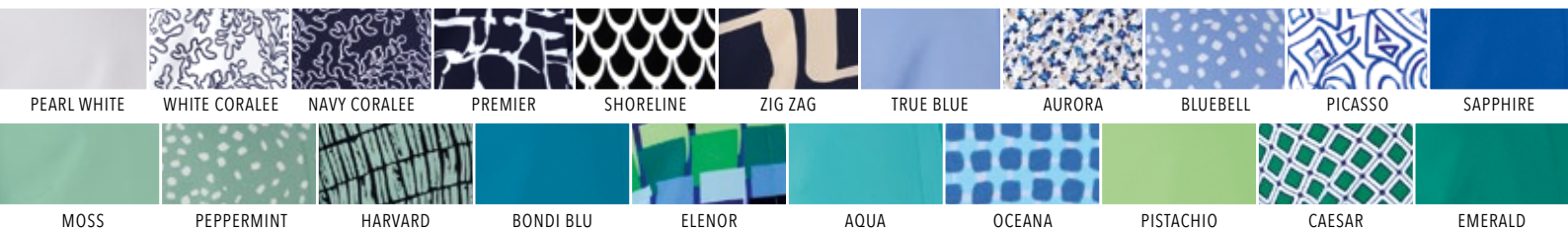
SIZES 50 - 54

**R575.00**



### NO IRON REQUIRED

All garments are easy  
care. Just wash and wear  
and go, go, go!



# SABRINA BLOUSE

## RELAXED FIT

Long Sleeve Blouse, Front Pockets & Zip, Roll Up Tab Sleeves, Back Pleat - Loose Fit

### LENGTH

Approx. 71cm centre back

### SIZES

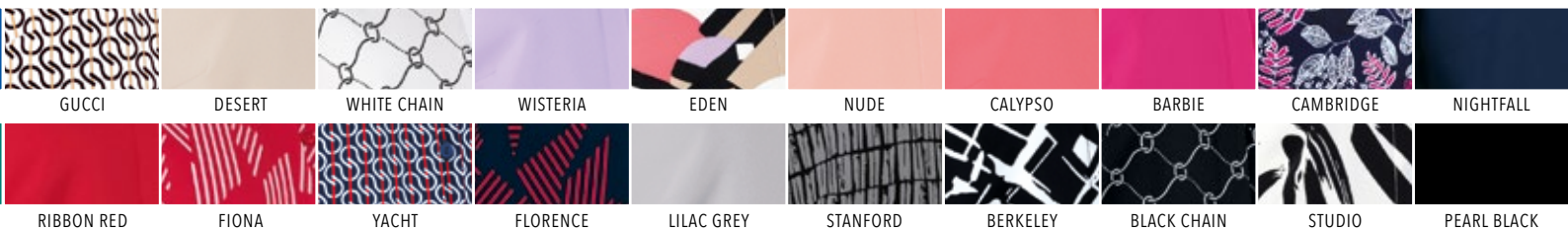
26 - 54

SIZES 26 - 48  
**R560.00**

SIZES 50 - 54  
**R590.00**

Model wears  
size 42

Model wears  
size 32



# PEARL POLYESTER SKIRT

## SOFIA SKIRT

### FITTED

Fit and Flare Soft Skirt,  
UNLINED

#### LENGTH

Approx. 68cm centre back

#### SIZES

28 - 54

Model wears size 32

SIZES 28 - 48  
**R530.00**

SIZES 50 - 54  
**R570.00**



PEARL POLYESTER  
SKIRT & DRESSES ARE  
ONLY AVAILABLE IN  
COLOURS & PRINTS  
SHOWN BELOW



GUCCI



CALYPSO



EDEN



BARBIE



CAMBRIDGE



RIBBON RED



FIONA



YACHT



FLORENCE



NIGHTFALL



ZIG ZAG



PREMIER



NAVY CORALEE



SAPPHIRE

**CIARA  
DRESS**

**REGULAR FIT**

Short Sleeve Soft  
Shift Dress, UNLINED

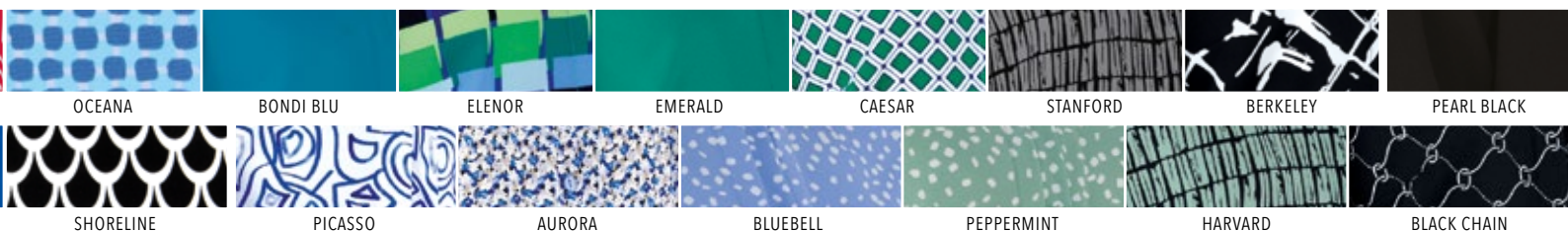
**LENGTH**  
Approx. 96cm centre back

**SIZES**  
26 - 48

\*Optional +7cm extra body length

Model wears size 32

SIZES 26 - 48  
**R600.00**



# PEARL POLYESTER DRESSES

## ELMARIE DRESS

### RELAXED FIT

Long Tab Sleeve,  
Button through Shirt  
Soft Dress, Pockets, Belted,  
Side Slits, UNLINED

#### LENGTH

Approx. 96cm centre back

#### SIZES

28 - 54

\*Optional +7cm extra body length

SIZES 28 - 48  
**R680.00**

SIZES 50 - 54  
**R770.00**

Model wears  
size 32

Model wears  
size 42



GUCCI



CALYPSO



EDEN



BARBIE



CAMBRIDGE



RIBBON RED



FIONA



YACHT



FLORENCE



NIGHTFALL



ZIG ZAG



PREMIER



NAVY CORALEE



SAPPHIRE

**RIHANNA  
DRESS**

**RELAXED FIT**

Short Sleeve, Front and  
Shoulder Pleats, Collared Dress,  
UNLINED

**LENGTH**

Approx. 100cm centre back

**SIZES**

28 - 54

\*Optional +7cm extra body length

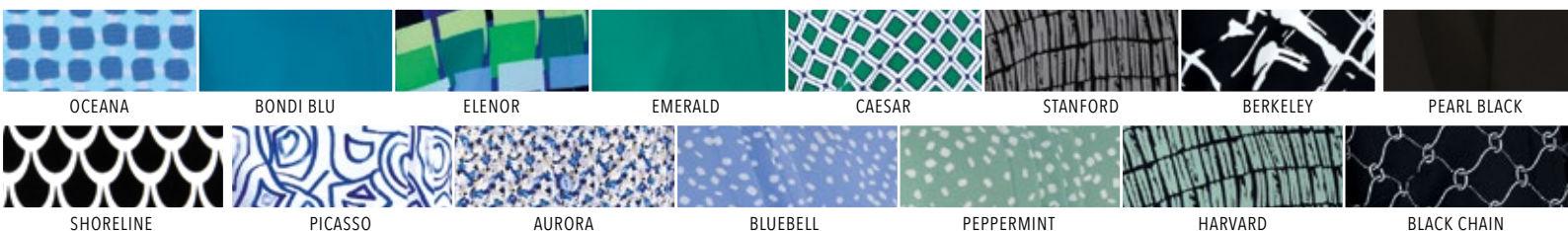
SIZES 28 - 48  
**R600.00**

---

SIZES 50 - 54  
**R660.00**

Model wears  
size 32

Model wears  
size 42





COTTON RICH SHIRTS ARE ONLY AVAILABLE IN COLOURS & PRINTS SHOWN RIGHT

GEMINI	MEADOW	AMAZON	SAGE	MONACO	KINGSTON	FEATHERS	PLAIN WHITE	PLAIN BLACK
ARIES	HAMILTON	CHELSEA	AZURE	INDIGO	LIBRA	RIO	GREYSTONE	GREY GINGHAM
ARCHER	TOPAZ	COBALT	COASTAL CHECK	INK NAVY	BLUE NAVY DOT	BOTANICAL	WESTON	OLYMPIC

**VICTORIA  
SHIRT**

**REGULAR FIT**

Long Sleeve, Concealed Button,  
Wide Cuff Shirt

**LENGTH**

Approx. 65cm centre back

**SIZES**

28 - 54

*Model wears size 32*

SIZES 28 - 48  
**R540.00**

SIZES 50 - 54  
**R570.00**

Approx. 65cm centre back



# LADIES COTTON RICH SHIRTS

## LEXI SHIRT

### REGULAR FIT

Short Sleeve Classic Curved Panel Line Shirt

#### LENGTH

Approx. 65cm centre back

#### SIZES

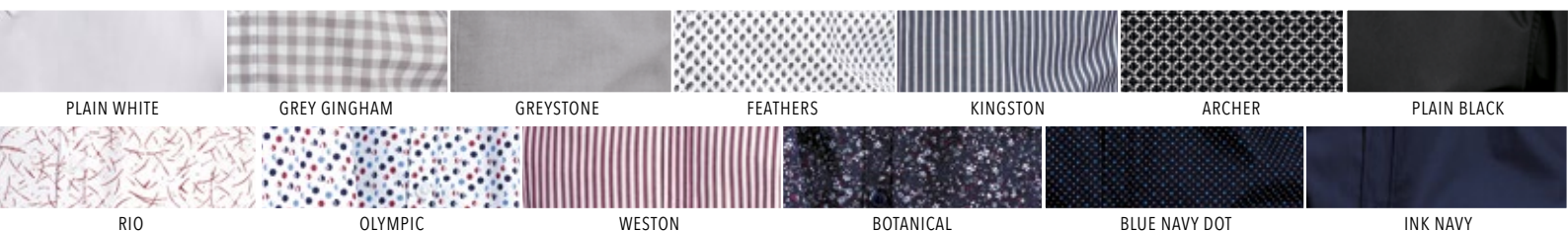
26 - 54

SIZES 26 - 48  
**R510.00**

SIZES 50 - 54  
**R540.00**

Model wears size 32

Model wears size 42



# LADIES COTTON RICH SHIRTS

## LIANDRI SHIRT

### REGULAR FIT

Long Sleeve Classic Curved Panel Line Shirt

#### LENGTH

Approx. 65cm centre back

#### SIZES

26 - 54

\*Optional +5cm sleeve length

SIZES 26 - 48  
**R530.00**

SIZES 50 - 54  
**R560.00**

Model wears  
size 32

Model wears  
size 42



# SILKY STRETCH KNIT STYLES



NAVY  
Silky Stretch Knit

PREMIER  
Silky Stretch Knit

ROYAL  
Silky Stretch Knit

CEASAR  
Silky Stretch Knit

JADE  
Silky Stretch Knit

WHITE  
Silky Stretch Knit

ASIAN  
Silky Stretch Knit

RED  
Silky Stretch Knit

GRAPHIC  
Silky Stretch Knit

BLACK  
Silky Stretch Knit



Approx. 105cm centre back

## JASMIN DRESS

**FITTED**  
Short Sleeve, Wrap Dress

**LENGTH**  
Approx. 105cm centre back

**SIZES**  
XS - 2XL

*Model wears size S*

SIZES XS - 2XL  
**R660.00**



Approx. 64cm centre back

## POLO TOP

**REGULAR FIT**  
Long Sleeve PoloNeck  
Knit Top

**LENGTH**  
Approx. 64cm centre back

**SIZES**  
XS - 3XL

*Model wears size S*

SIZES XS - 3XL  
**R420.00**



|.....|  
Approx. 63cm centre back  
|.....|

# LYDIA T-SHIRT

**FITTED**

Short Sleeve Basic Crew Neck T-Shirt

**LENGTH**  
Approx. 63cm centre back

**SIZES**  
XS - 3XL

*Model wears size S*

SIZES XS - 3XL  
**R350.00**



|.....|  
Approx. 77cm centre back  
|.....|

# LERATO TOP

**RELAXED FIT**

Short Sleeve Top,  
Flared to the Bottom

**LENGTH**  
Approx. 77cm centre back

**SIZES**  
XS - 3XL

*Model wears size S*

SIZES XS - 3XL  
**R495.00**

# SILKY STRETCH KNIT STYLES



NAVY  
Silky Stretch Knit

PREMIER  
Silky Stretch Knit

ROYAL  
Silky Stretch Knit

CEASAR  
Silky Stretch Knit

JADE  
Silky Stretch Knit

WHITE  
Silky Stretch Knit

ASIAN  
Silky Stretch Knit

RED  
Silky Stretch Knit

GRAPHIC  
Silky Stretch Knit

BLACK  
Silky Stretch Knit



Approx. 85cm centre back

## VALENTINA COATIGAN

### RELAXED FIT

Long Sleeve Knit Coatigan

**LENGTH**

Approx. 85cm centre back

**SIZES**

XS - 3XL

Model wears size S

SIZES XS - 3XL  
**R540.00**

## PHELISA PANTS

### RELAXED FIT

Half Elastic Knit Lounge Pants with Pockets

**LENGTH**

Approx. 79cm inside leg

**SIZES**

XS - 3XL

Model wears size S

SIZES XS - 3XL  
**R470.00**



Approx. 79cm inside leg

Our Silky Stretch Knit collection is made from a mix of woven knit fabric. It's easy to care for, comfortable to wear, drapes beautifully, and looks great on all body shapes and sizes.



- 1/ PREMIER Silky Stretch Knit
- 2/ ROYAL Silky Stretch Knit
- 3/ CAESAR Silky Stretch Knit
- 4/ JADE Silky Stretch Knit
- 5/ NAVY Silky Stretch Knit



- 6/ ASIAN Silky Stretch Knit
- 7/ WHITE Silky Stretch Knit
- 8/ RED Silky Stretch Knit
- 9/ GRAPHIC Silky Stretch Knit
- 10/ BLACK Silky Stretch Knit



**MACHINE  
WASHABLE**

All garments are machine washable, including our blazers and jackets.



Navy Pin Dot

RUBY RED

SANDSTONE

PLATINUM

GREY PINSTRIPE

SHADOW

GUNMETAL GREY

**JACOB  
WAISTCOAT**

**REGULAR FIT**

Regular Waistcoat,  
Adjustable Back Buckle,  
LINED

**LENGTH**

Approx. 58cm centre back

**SIZES**

34 - 54

*Model wears size 34*

SIZES 34 - 48  
**R680.00**

SIZES 50 - 54  
**R730.00**

Approx. 58cm centre back



# MENS SUITING BLAZERS

## DAVID BLAZER

### SLIM FIT

Slim Fit Blazer,  
One Button, LINED

#### LENGTH

Approx. 72cm centre back

#### SIZES

32 - 48

\*Optional +5cm sleeve length

Model wears size 34

SIZES 32 - 48  
**R1250.00**



Approx. 72cm centre back

RUBY RED

SANDSTONE

PLATINUM

GREY PINSTRIPE

SHADOW

GUNMETAL GREY

**JIM  
BLAZER**

**REGULAR FIT**  
Regular Fit Blazer, LINED

**LENGTH**  
Approx. 73cm centre back

**SIZES**  
32 - 54

\*Optional +5cm sleeve length

Model wears size 34

SIZES 32 - 48
<b>R1250.00</b>
SIZES 50 - 54
<b>R1310.00</b>

Approx. 73cm centre back



# MENS SUITING PANTS



## DYLAN PANTS

### SLIM FIT

Slim Fit Pants, With Flat Front, 4 Pockets

#### LENGTH

Approx. 84cm inside leg

#### SIZES

28 - 48

\*Optional +5cm length

SIZES 28 - 48  
R610.00

RUBY RED

SANDSTONE

PLATINUM

GREY PINSTRIPE

SHADOW

GUNMETAL GREY



Model wears size 34

# JAKE PANTS

## REGULAR FIT

Regular Fit Pants, With Flat Front, 4 Pockets

**LENGTH**  
Approx. 84cm inside leg

**SIZES**  
28 - 48

\*Optional +5cm length

SIZES 28 - 48  
**R610.00**



BLACK MAGIC

ANCHOR

NAVY PINSTRIPE

SUEDE BLUE

NAVY PIN DOT

PACIFIC NAVY

# MENS COTTON RICH SHIRTS

## ETHAN SHIRT

### SLIM FIT

Long Sleeve, Slim Fit Shirt

#### LENGTH

Approx. 75cm centre back

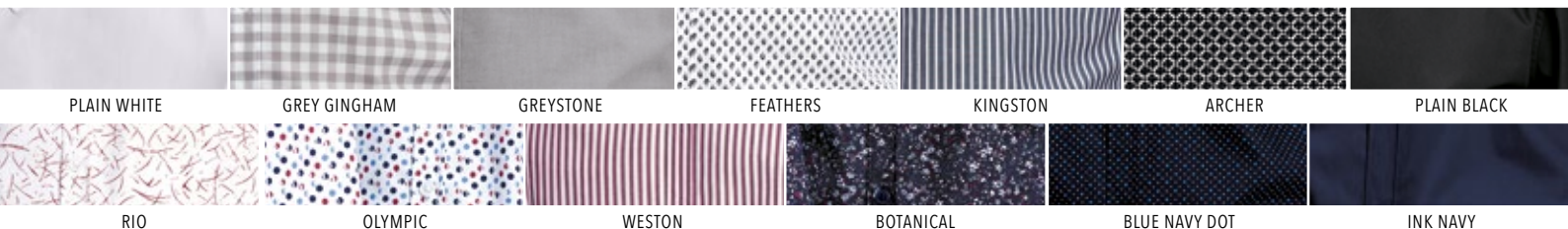
#### SIZES

XS - XL

\*Optional +5cm sleeve length

Model wears size M

SIZES XS - XL  
R555.00



# DEAN SHIRT

## REGULAR FIT

Long Sleeve, Regular Fit Shirt

**LENGTH**  
Approx. 76cm centre back

**SIZES**  
XS - 3XL

\*  
Optional +5cm sleeve length

Model wears size L

**SIZES XS - 3XL**  
**R555.00**

Approx. 76cm centre back



# MENS COTTON RICH SHIRTS

## STUART SHIRT

### RELAXED FIT

Long Sleeve, Relaxed Fit Shirt, Pocket

#### LENGTH

Approx. 77cm centre back

#### SIZES

XS - 4XL

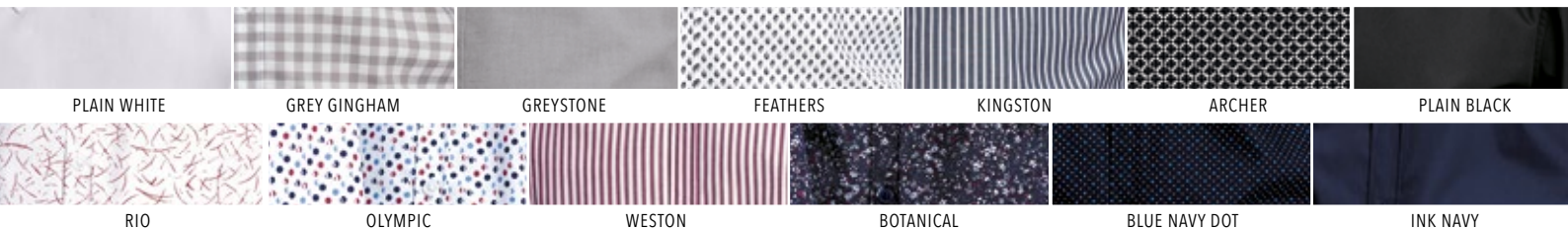
\*Optional extra +5cm sleeves & 10cm body length

Model wears size L

SIZES XS - XL  
**R555.00**

SIZES 2XL - 4XL  
**R605.00**

Approx. 77cm centre back





Approx. 76cm centre back

## DAN SHIRT

### REGULAR FIT

Short Sleeve, Regular Fit Shirt

#### LENGTH

Approx. 76cm centre back

#### SIZES

XS - 3XL

Model wears size L

SIZES XS - 3XL  
R540.00



Approx. 77cm centre back

## SCOTT SHIRT

### RELAXED FIT

Short Sleeve, Relaxed Fit Shirt, Pocket

#### LENGTH

Approx. 77cm centre back

#### SIZES

XS - 4XL

\*Optional extra +10cm body length

Model wears size L

SIZES XS - XL  
R540.00

SIZES 2XL - 4XL  
R590.00



# WINTER WARMERS / PULLOVERS & SCARF



.....|  
Approx. 64cm centre back  
.....|

## JULIA PULLOVER

### REGULAR FIT

Ladies 1/4 Zip Knit Melton Pullover

#### LENGTH

Approx. 64cm centre back

#### SIZES

XS - 2XL

Model wears size S

SIZES XS - 2XL  
R550.00



## CHUNKY SCARF

Knit Melton Chunky  
Winter Scarf

#### LENGTH

180cm x 48cm

#### SIZES

ONE SIZE FITS ALL

ONE SIZE  
R350.00



.....|  
Approx. 72cm centre back  
.....|

## JUDE PULLOVER

### REGULAR FIT

Mens 1/4 Zip Knit  
Melton Pullover

#### LENGTH

Approx. 72cm centre back

#### SIZES

XS - 2XL

Model wears size S

SIZES XS - 2XL  
R580.00

# LILAH COAT

## REGULAR FIT

Long Sleeve Softshell Trench Coat,  
100% Water Resistant,  
UNLINED

**LENGTH**

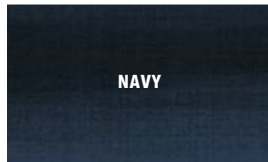
Approx. 94cm centre back

**SIZES**

XS - 2XL

Model wears size S

SIZES XS - 2XL  
**R850.00**



NAVY



Approx. 94cm centre back



Approx. 70cm centre back

# LOGAN COAT

## REGULAR FIT

Long Sleeve Zip Front Softshell  
100% Water Resistant Jacket,  
UNLINED

**LENGTH**

Approx. 70cm centre back

**SIZES**

XS - 2XL

Model wears size M

SIZES XS - 2XL  
**R830.00**

# WINTER WARMERS / COATS



## LYNN COAT

### REGULAR FIT

Classic Melton Coat with Pockets, LINED

#### LENGTH

Approx. 92cm centre back

#### SIZES

XS - 2XL

Model wears size S

SIZES XS - 2XL  
**R1345.00**



## ASHA COAT

### REGULAR FIT

Ladies Long Sleeve Asymmetric Front, Melton Coat, LINED

#### LENGTH

Approx. 98cm centre back

#### SIZES

XS - 2XL

Model wears size S

SIZES XS - 2XL  
**R1450.00**

# NOAH COAT

## REGULAR FIT

Classic Melton Coat  
with Pockets, LINED

### LENGTH

Approx. 90cm centre back

### SIZES

XS - 2XL

Model wears size M

SIZES XS - 2XL  
**R1490.00**



Approx. 92cm centre back

CAMEL MELTON

NAVY MELTON

CHARCOAL MELTON

BLACK MELTON



Approx. 82cm centre back

# WAYNE COAT

## REGULAR FIT

Mens Long Sleeve Concealed  
Front Funnel Neck Melton  
Coat, LINED

### LENGTH

Approx. 82cm centre back

### SIZES

XS - 2XL

Model wears size M

SIZES XS - 2XL  
**R1590.00**

# SERVICE ESSENTIALS

Built for performance and designed for service, this functional uniform range supports teams in fast-paced, service-driven environments.

From the floor to clinical settings and behind the scenes, it meets everyday demands without compromising comfort or a professional look.

Created for long hours and constant movement,

- ✓ Lightweight
- ✓ Soft-touch finishes
- ✓ Quick dry technology
- ✓ Hypoallergenic
- ✓ Breathable
- ✓ Easy-care practicalities

So your team can focus on the job, not their uniform.



WELLNESS



DENTAL



MEDICAL



HEALTH



CARE

# LAURA TOP

## REGULAR FIT

Short Sleeve Tunic Top,  
Sweetheart Neckline with  
Optional Contrast Detail,  
Double Front Pockets

### LENGTH

Approx. 72cm centre back

### SIZES

28 - 54

Model wears size 32

SIZES 28 - 48  
**R440.00**

SIZES 50 - 54  
**R485.00**



Approx. 72cm centre back

RED  
Mini Matt  
CHARCOAL  
Mini Matt



Approx. 72cm centre back

# LUPITA TOP

## REGULAR FIT

Short Sleeve Tunic Top,  
Shaped Neckline with  
Optional Contrast Detail

### LENGTH

Approx. 72cm centre back

### SIZES

28 - 54

Model wears size 32

SIZES 28 - 48  
**R440.00**

SIZES 50 - 54  
**R485.00**

BLACK  
Mini Matt

NAVY  
Mini Matt

ROYAL  
Mini Matt

TURQUOISE  
Mini Matt

WHITE  
Mini Matt

RED  
Mini Matt

CHARCOAL  
Mini Matt

BLACK  
Mini Matt

NAVY  
Mini Matt

ROYAL  
Mini Matt

TURQUOISE  
Mini Matt

WHITE  
Mini Matt

Approx. 78cm centre back



## WINONA TOP

### REGULAR FIT

Short Sleeve Button Front,  
Collar with Optional  
Contrast Detail,  
Pockets in the Panel

**LENGTH**

Approx. 72cm centre back

**SIZES**

28 - 54

Model wears size 32

SIZES 28 - 48  
**R440.00**

SIZES 50 - 54  
**R485.00**

## DOREEN TOP

### REGULAR FIT

Short Sleeve Top, V-Neck,  
Front Pockets with Optional  
Contrast Detail, Hidden  
Pen Pocket

**LENGTH**

Approx. 72cm centre back

**SIZES**

28 - 54

\*Optional +7cm extra length

Model wears size 32

SIZES 28 - 48  
**R440.00**

SIZES 50 - 54  
**R485.00**

Approx. 81cm centre back





Approx. 77cm inside leg

## AYANDA PANTS

SIZES 28 - 48  
R450.00

SIZES 50 - 54  
R490.00

### RELAXED FIT

Jogger Style Pants,  
Fully Elasticated Waist  
and Cuff, Cargo Pocket

#### LENGTH

Approx. 77cm inside leg

#### SIZES

28 - 54

SIZES 28 - 48  
R440.00

SIZES 50 - 54  
R490.00

## MONICA SKIRT

### REGULAR FIT

60cm Skirt With Part  
Elastic Waist, UNLINED

#### LENGTH

Approx. 60cm centre back

#### SIZES

28 - 54

\*Optional +10cm extra length



Approx. 77cm centre back

## HILARY PANTS

SIZES 28 - 48  
R450.00

SIZES 50 - 54  
R490.00

### REGULAR FIT

Part Elasticated Waist,  
2 Side Pockets,  
Zip Front Pants

#### LENGTH

Approx. 78cm inside leg

#### SIZES

28 - 54

\*Optional +7cm extra length



Approx. 78cm inside leg

# SERVICE ESSENTIALS

Approx. 75cm inside leg

- RED  
Mini Matt
- CHARCOAL  
Mini Matt
- BLACK  
Mini Matt
- NAVY  
Mini Matt
- ROYAL  
Mini Matt
- TURQUOISE  
Mini Matt
- WHITE  
Mini Matt



## THEMBA TOP

### REGULAR FIT

Short Sleeve Male Scrub Top,  
Optional Contrast Detail,  
3 Pockets

#### LENGTH

Approx. 75cm centre back

#### SIZES

XS - 4XL

*Model wears size M*

SIZES XS - 2XL  
**R440.00**

SIZES 3XL - 4XL  
**R485.00**



Approx. 81cm centre back

## THULANI PANTS

### RELAXED FIT

Jogger Style Pants, Fully Elasticated Waist and Cuff, Cargo Pocket

#### LENGTH

Approx. 81cm inside leg

#### SIZES

28 - 48

Model wears size 32

SIZES 28 - 48  
R450.00



Approx. 84cm inside leg

## PHILIP PANTS

### REGULAR FIT

Mens Pants, Part Elasticated, Side Pockets, Zip Front

#### LENGTH

Approx. 84cm inside leg

#### SIZES

28 - 48

\*Optional +5cm extra length

Model wears size 32

SIZES 28 - 48  
R450.00

# STYLE FOR EVERY BODY

Everyone is unique, therefore our range comes in various fits and sizes. To make it easier for everyone to find the best styles that flatter their body type, we have classified our styles into the following **'FIT' categories:**

## FITTED

These garments are designed to closely follow the contours of the body, providing a more snug and form-fitting silhouette, enhancing the figure.

## REGULAR FIT

Regular fit garments are shaped to lightly sit on your body, giving it some form without being too tight. Regular fit is the most traditional & suits a wide range of body types.

## RELAXED FIT

Relaxed fit is a looser and more comfortable cut, allowing for more freedom of movement.

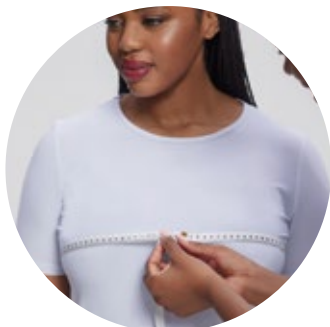


# LADIES SIZE GUIDE

GARMENT SIZE	BUST	HIP	KNITWEAR & COATS
26	73 - 76cm	80 - 83cm	XS 28 - 30
28	77 - 80cm	84 - 87cm	S 32 - 34
30	81 - 84cm	88 - 91cm	M 36 - 38
32	85 - 88cm	92 - 95cm	L 40 - 42
34	89 - 93cm	96 - 100cm	XL 44 - 46
36	94 - 98cm	101 - 105cm	2XL 48 - 50
38	99 - 103cm	106 - 110cm	3XL 52 - 54
40	104 - 108cm	111 - 115cm	
42	109 - 114cm	116 - 121cm	
44	115 - 120cm	122 - 127cm	
46	121 - 126cm	128 - 133cm	
48	127 - 132cm	134 - 139cm	
50	133 - 138cm	140 - 145cm	
52	139 - 144cm	146 - 151cm	
54	145 - 150cm	152 - 157cm	

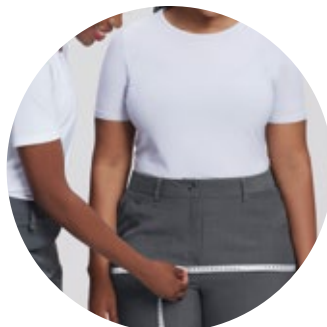


## HOW TO MEASURE UP



**(A.) BUST**

Measure around the fullest part of the bust, keeping the tape level and straight. Keep one finger between the tape and the body.



**(B.) HIPS**

Measurement over the fullest part of your bottom / thighs.

Don't guess your size, ask a friend to measure you with a tape measure to help you order the right size. Compare your measurements with the chart above.

**\* PLEASE NOTE**

Compare your measurements with the chart above. If your size falls between two sizes, we recommend that you choose the larger size.



## SUIT YOURSELF

Everyone is unique, therefore our range comes in various fits and sizes. To make it easier for everyone to find the best styles that flatter their body type, we have classified our styles into the following **'FIT' categories:**

### SLIM FIT

These garments are designed to closely follow the contours of the body, providing a more sleek and form-fitting silhouette without creating an uncomfortable fit.

### REGULAR FIT

Regular fit garments are shaped to lightly sit on your body, giving it some form without being too tight, creating a tailored silhouette.

### RELAXED FIT

This is the most traditional fit. It is looser on the body providing a more comfortable cut & look allowing for more freedom of movement.

# MENS SIZE GUIDE

MENS SHIRTS, KNITWEAR & COATS			MENS BLAZERS		MENS PANTS	
GARMENT SIZE	NECK	CHEST	GARMENT SIZE	CHEST	GARMENT SIZE	WAIST
XS	36cm	81-87cm	34	87cm	28	72cm
S	38cm	87-94cm	36	92cm	30	77cm
M	40cm	97-104cm	38	97cm	32	82cm
L	42cm	107-114cm	40	102cm	34	87cm
XL	44cm	117-124cm	42	107cm	36	92cm
2XL	46cm	127-134cm	44	112cm	38	97cm
3XL	48cm	137-144cm	46	117cm	40	102cm
4XL	50cm	147-154cm	48	122cm	42	107cm
			50	127cm	44	112cm
			52	132cm	46	117cm
			54	137cm	48	122cm

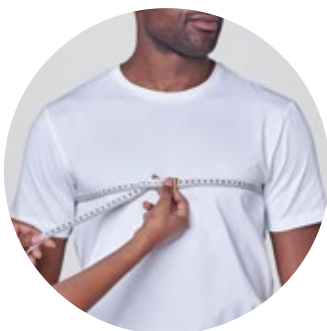


## HOW TO MEASURE UP



**A. NECK**

Don't guess your size, ask a friend to measure around your neck at collar level. Make allowance for comfort.



**B. CHEST**

Measure around the fullest part of the chest, keeping the tape level and straight. Keep one finger between the tape and the body.



**C. WAIST**

Measurement over waist position, where you would naturally wear your belt.

**\* PLEASE NOTE**

Compare your measurements with the chart above. If your size falls between two sizes, we recommend that you choose the larger size.

## IMPORTANT

Prices can change prior to confirmation of order, as they are based on current fabric costs and are subjected to fluctuating exchange rates.

Slight shade differences may occur between different dye-lots in fabric deliveries, also between different fabric qualities of the same colour, which are commercially acceptable by fabric supplier standards.

All garments are made to order, changes to orders will only be accepted, provided that they are received, in writing, and are not in the production cycle yet.

## PACKAGING & DELIVERY

### DELIVERY

**Delivery can be expected within 8+ weeks of the date of order confirmation, unless otherwise advised.** Imagemakers cannot, however, be held

responsible for delivery delays brought about by unforeseen circumstances beyond our control.

For example: Delays in fabric delivery, strikes, etc.

Customers shall not be entitled to cancel such order on the basis of late delivery.

- The delivery charge per garment must be included for postage/packaging. Refer to Price List for delivery charges.
- Orders are delivered by courier service
- Should you confirm in writing that you make your own arrangements, for collection of the goods at our premises, no courier fee will be charged.
- NOTE: There is a minimum delivery charge per order, refer to price list.

### SOUTH AFRICA

If Imagemakers courier is used, there is a minimum charge of R150 per order or R10 per garment, whichever is the greater.

### FOR NAMIBIA, BOTSWANA, ESWATINI AND LESOTHO

It is compulsory to use Imagemakers' courier, in order for no VAT to be charged. There is a minimum delivery charge of R900 per order or R20 per garment, whichever is the greater. If you use your own courier, you will be charged VAT.

### OTHER COUNTRIES OUTSIDE OF SOUTH AFRICA

Will be quoted on an ad hoc basis.

## EASY ORDERING

Request your web account so you can place your orders online. If you have more than one branch, orders can be captured per branch.

**All prices are quoted exclusive of VAT and delivery. Delivery period is approximately 8+ weeks from the date of order confirmation.**

## PAYMENT TERMS

A 50% deposit is payable on confirming the order, the balance is payable after manufacturing, before Imagemakers can despatch.

**PLEASE NOTE: Unless ordered from our stock range, all garments are manufactured, in available styles/colours/sizes, specifically to order.**

## CONTINUITY

We are committed to ensure that the styles, fabrics and colours presented in this catalogue will continue to be available as shown. However, as we continuously develop and update our ranges, we do reserve the right to withdraw / replace existing fabrics, styles, colours and designs.

**ALL PRICES ARE  
QUOTED EXCLUSIVE  
OF VAT AND DELIVERY.**

**DELIVERY PERIOD IS APPROX.  
8+ WEEKS FROM THE DATE OF  
ORDER CONFIRMATION.**





**im** **imagemakers**  
CORPORATE FASHION

 **WHATSAPP** 066 476 0105

 **CAPE TOWN** 0861 366011

**JOHANNESBURG** 0861 366011

**BOTSWANA** 0861 366011

**WINDHOEK** 00264 61 300 614

 **sales@imagemakers.co.za**