

2023



South Tipperary
Development CLG

PROGRESS REPORT



Contact Details:

Head Office

Unit 2C, Carrigeen Commercial Park,
Clogheen Road,
Cahir,
Co. Tipperary.

Tel: 052 7442652

Email: info@stdc.ie

Website: www.stdc.ie

Company Registration No.: 449731

CHY No.: 18085

Registered Charity No.: 20068684



Comhlacht Forbairt
Thiobraid Árann Theas CTR

A WORD FROM OUR CHAIRPERSON & CEO



We are pleased to present the South Tipperary Development CLG (STDC) Progress Report for 2023, which outlines our key activities and actions over the past year. Despite ongoing challenges in the wider socio-economic environment, STDC has remained focused on its mission to strengthen community engagement, support individuals, promote business development, and encourage sustainable growth.

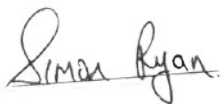
A significant milestone this year was our role in supporting the preparation of the Tipperary LEADER Local Development Strategy (LDS) 2023-2027. This strategic plan offers a clear framework for rural development in Tipperary over the coming years. It was one of the first LDS in the country to be approved by the Department of Rural and Community Development.

We successfully concluded the Social Inclusion and Community Activation Programme (SICAP) 2018-2023 and have secured the contract for SICAP 2024-2028, ensuring the continued delivery of essential services across South Tipperary. Four new caseworkers joined our Local Area Employment Services (LAES) team enabling us to assist more individuals in securing meaningful employment. Two new staff members also joined our SICAP team as part of the Community Car Initiative. This enabled STDC to respond to the needs of Ukrainians living in rural areas under “Offer a Home Scheme”, by addressing gaps in public transportation and ensuring access to essential services such as healthcare, employment, and education.

Throughout 2023, we continued to deliver a range of programmes, including the Rural Social Scheme, Tús, Rural Recreation, Traveller Primary Health Care Project and Early Years services. These programmes have made a positive impact in the areas of social inclusion, rural development, education, employment support, and climate action.

During the year, STDC undertook a comprehensive rebranding initiative to modernise our public image and improve outreach. This included the development of a new visual identity, the redesign of our website, and the enhancement of our social media presence across multiple platforms.

Our progress and accomplishments of 2023 reflect the hard work and commitment of our staff, who have been central to delivering our programmes. We also appreciate the support of our Board Members who have given freely of their time and whose contributions have been instrumental in steering the organisation.



Simon Ryan Chairperson



Isabel Cambie CEO

Our work throughout the year would not have been possible without the support and trust of our funders on whose behalf we deliver our various programmes. This is inclusive of State Agencies and the Local Authority. We would like to acknowledge our appreciation to all of our partners who support us in various aspects of our work.

As we look to the future, we remain committed to building on the progress we have made, seeking out new opportunities, and continuing to support sustainable development and social inclusion in our community.



South Tipperary
Development CLG

Invested in you & your Community

ABOUT US

South Tipperary Development CLG (STDC) is a Community Led Local Development Company. It is a not-for-profit registered charity overseen by a voluntary board of directors representing community, farming, business and state agency sectors.

South Tipperary Development CLG supports communities, individuals, families, and small businesses in South Tipperary (Clonmel Borough District, Tipperary Cahir, Cashel Municipal District and the Carrick-on-Suir Municipal District).

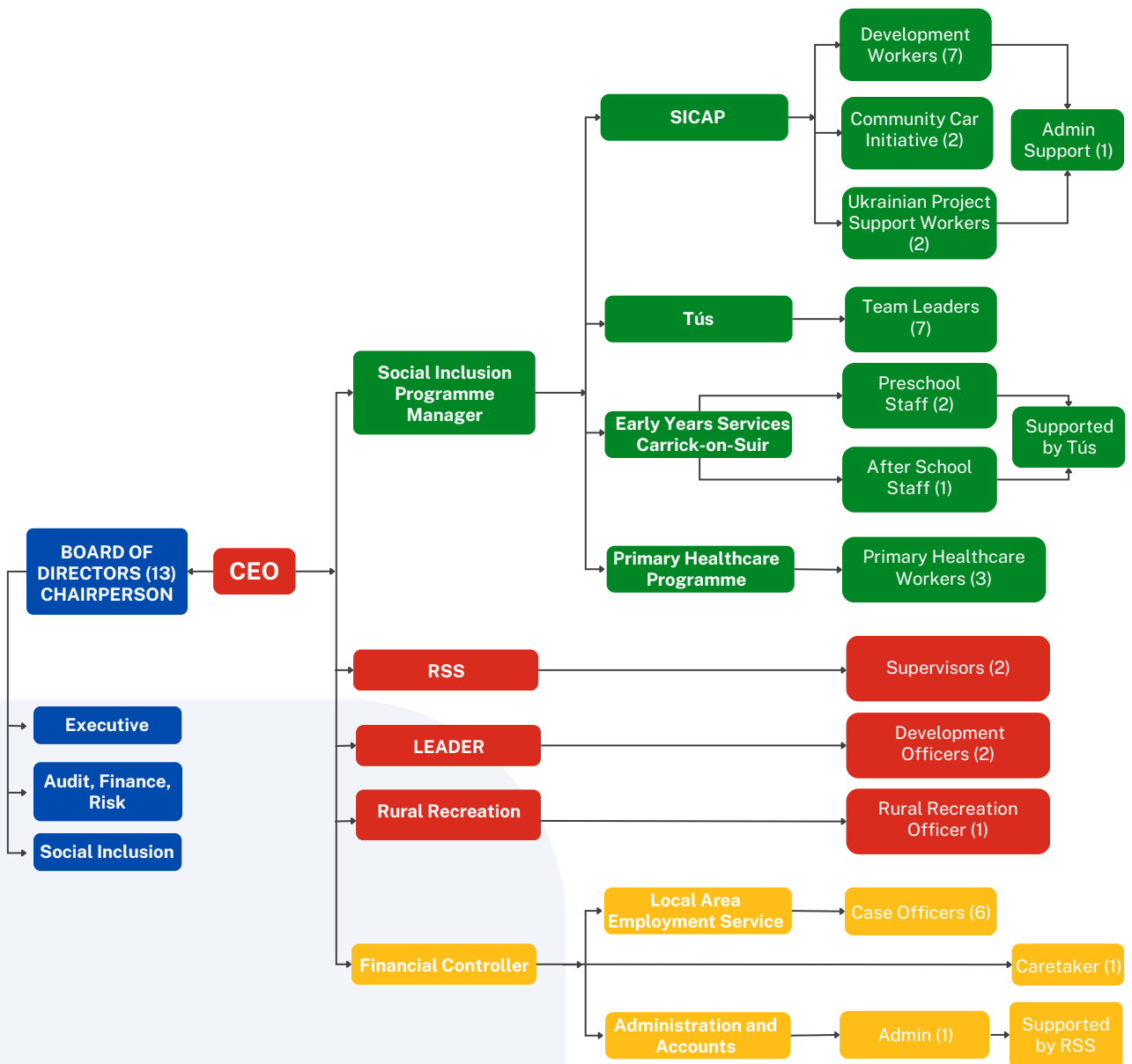
South Tipperary Development CLG managed the following Programmes and Services in 2023:

- Early Years Services
- Local Area Employment Services (LAES)
- Rural Development (LEADER) Programme
- Rural Recreation (RR)
- Rural Social Scheme (RSS)
- Social Inclusion and Community Activation Programme (SICAP)
- Traveller Primary Health Care Project (TPHCP)
- Tús (Community Work Placement Initiative)
- Ukrainian Refugee Support Programme & Community Car initiative (CCI)



SOME OF STDC STAFF TEAM

COMPANY STRUCTURE



OUR VISION

To be a catalyst for positive change, fostering a thriving, inclusive, and sustainable South Tipperary so that our environment is protected and where every individual and community can reach their full potential.

OUR MISSION

Leading the way, STDC supports, empowers and provides resources to individuals, local groups and enterprises through the delivery of publicly funded programmes. We are invested in people and their communities, responding flexibly to needs and challenges, facilitating sustainable development, thereby enhancing the quality of life in South Tipperary.

SUSTAINABLE DEVELOPMENT GOALS

Throughout all our work we are informed by and seek to contribute to the Sustainable Development Goals



OUR DIRECTORS



Simon Ryan
Chairperson



P.J. English
Vice Chairperson



Carmel Troy
Secretary



P.J. Maher



Michael Ryan



Sean Cooney



Kevin Ryan



Pat O'Brien



Fiona Kennedy



Maureen Fahey



Emer Leahy



Marion O'Neill

Our Board operates with transparency and accountability, ensuring the highest standards of governance and ethical conduct. We actively engage in strategic planning sessions, evaluate initiatives, and provide invaluable guidance to our dedicated team, fostering an environment of innovation and impact-driven actions.

OUR IMPACTS 2023



€1.7 M

Funding Directly Invested
in South Tipperary



€2.4 M

Additional Funding
Leveraged



2001

Individuals Received
One-to-One Support



176

Community and
Voluntary Groups
Supported



53

Jobs Created in
Enterprises We
Supported



55

Businesses Supported (Start-
ups, Existing and Social
Enterprises)



145

Disadvantaged Families
Supported



708

Ukrainian Refugees Supported
Through Various Programmes



410

Voluntary Hours
Given by the Board



150,696

Hours spent by Tús & RSS
Participants Working in the
Community

OUR FUNDERS AND PARTNERS



Rialtas
na hÉireann
Government
of Ireland

Tionscadal Éireann
Project Ireland
2040



Có-mhaoinithe ag an
Aontas Eorpach

Co-funded by the
European Union



An Roinn Coimirce Sóisialaí
Department of Social Protection



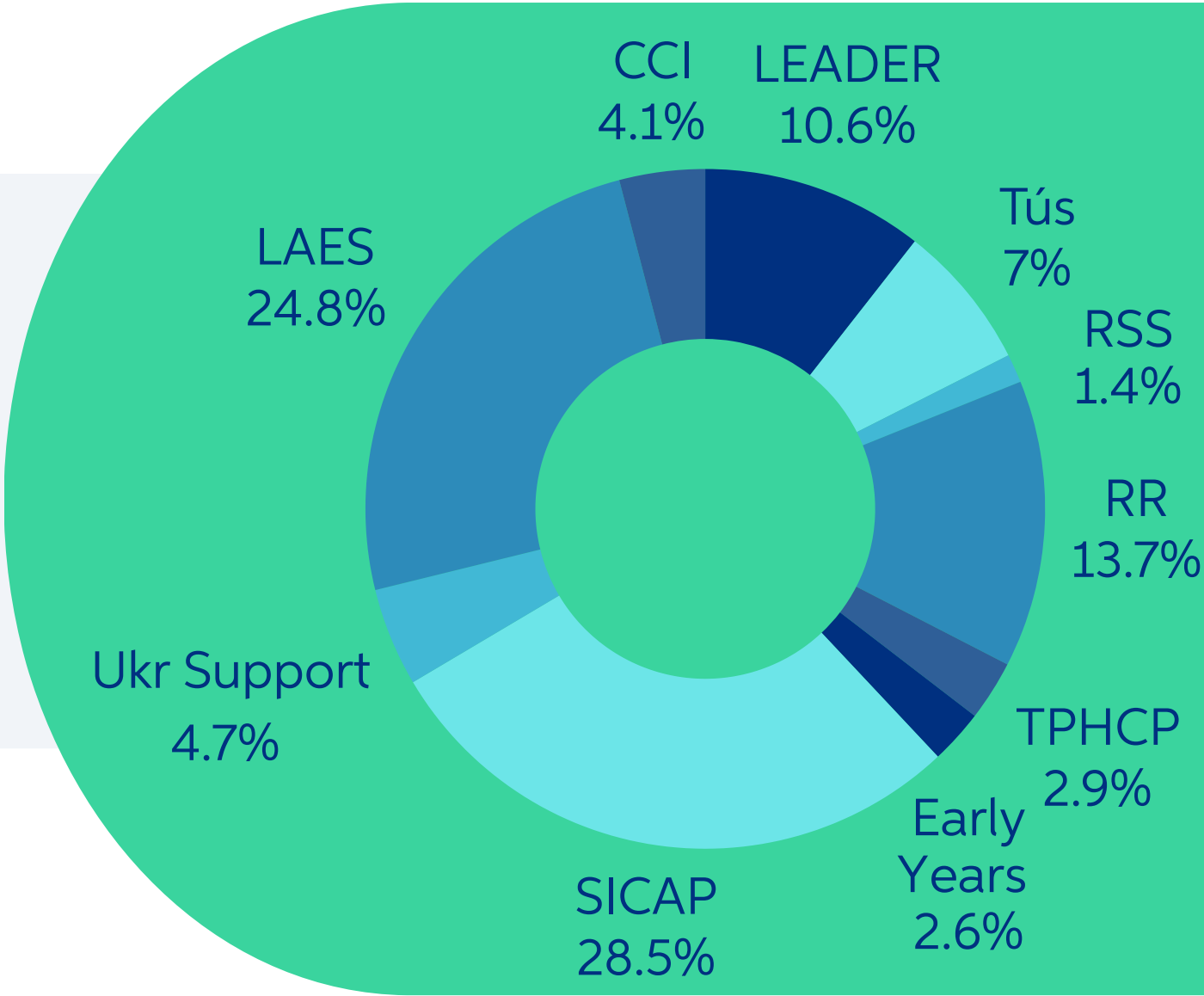
An Roinn Leanaí, Comhionannais,
Míchumais, Lánpháirtíochta agus Óige
Department of Children, Equality,
Disability, Integration and Youth



An Roinn Forbartha
Tuaithe agus Pobail
Department of Rural and
Community Development



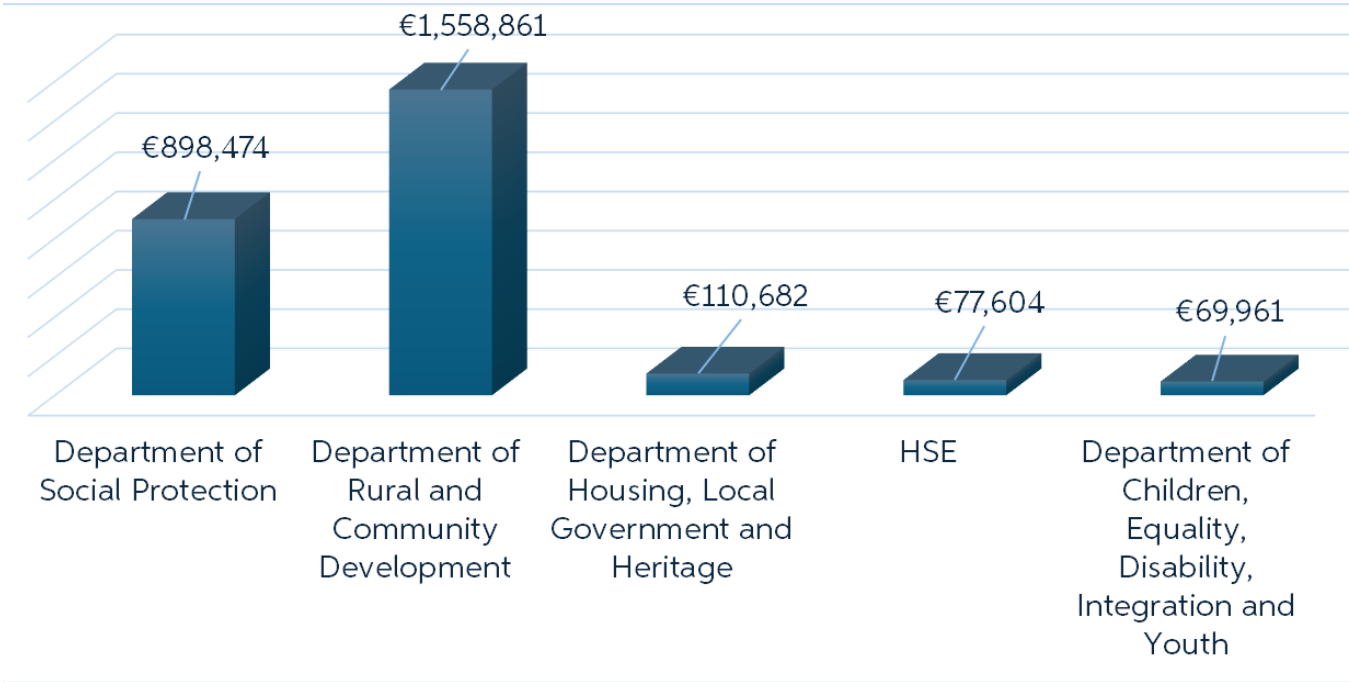
INCOME 2023 BY PROGRAMME



GOVERNANCE

- STDC’s Board has systems and procedures in place to ensure that the organisation is managed in an effective and transparent manner
- There were 10 board meetings held in 2023
- STDC’s board is compliant with the Charities Governance Code

FUNDING BY GOVERNMENT DEPARTMENT



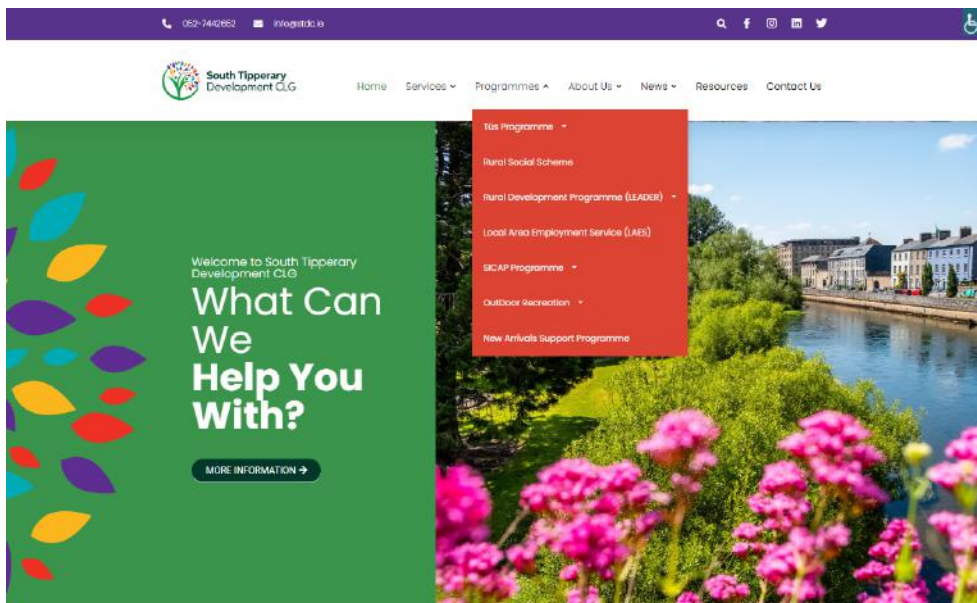
HOW FUNDING SUPPORTED LOCAL DEVELOPMENT ACTIVITIES

DIRECT PROGRAMME DELIVERY
€ 1,742,825

GENERAL OVERHEADS
€563,666

OUR NEW BRAND IDENTITY AND COMMUNICATIONS

In 2023, STDC took on the challenge of updating our communications with all our stakeholders. We engaged a branding company to help us to modernise our social media and website, and in the process we also updated our logo. Through staff focus groups and consultations we drew up the content for the new website. Since its launch in Autumn 2023, STDC.ie has had increased usage and in a user survey was commented on as “attractive”, “professional” and “easy to use”.



Our new logo and tagline were developed to represent STDC as a company which is approachable, informative, empowering, trusted, professional and forward thinking. It is focussed on people, as individuals or part of wider communities, as the core of our work. Our range of programmes are represented by the coloured leaves. The symbol of the tree has been retained, demonstrating both growth and our commitment to environmental protection. Overall, the logo represents diversity, creativity and working together for both the company and the communities and individuals that we serve.



South Tipperary
Development CLG

Invested in you & your Community

EARLY YEARS SERVICES



Funded by Túsla and Pobal

LITTLE ORCHARD PRE-SCHOOL SERVICE

South Tipperary Development Company (STDC) runs the Little Orchard Community Playschool, located at Killonerry Close in Carrick-on-Suir. This preschool is fully regulated by Tusla, the Child and Family Agency, ensuring that we meet all health, safety, and educational standards. Little Orchard is part of the government-funded Early Childhood Care and Education (ECCE) scheme, which provides free preschool education for up to two years before children enter primary school. Our two staff are trained in early childhood education and follow the Aistear curriculum framework, which is designed to support children's learning across various areas such as communication, well-being, identity, and exploring their environment.

Our Outcomes 2023

- ▶ 8 children enrolled under the ECCE scheme
- ▶ Service compliant with Tusla and Pobal requirements as demonstrated by inspection reports
- ▶ Result of parent survey showed satisfaction with our early years services and staff

At Little Orchard Preschool, STDC followed the Aistear curriculum by creating play-based learning activities that encourage children to explore their environment, communicate, and develop a strong sense of well-being and identity. The preschool staff carefully plan daily activities that align with Aistear's key themes, ensuring that each child's emotional, social, and cognitive development is nurtured in a supportive and engaging environment. The photos below demonstrate this:



Wibbly Wobble Bike Programme participants



Kids tending to the vegetable patch

UNDER THE TREE AFTERSCHOOL SERVICE

STDC provides an Afterschool service at Commeragh View in Carrick-on-Suir. This service is approved by Tusla and follows the Child Care Act 1991 standards. We focus on providing a high-quality experience that caters to each child's needs, supports their well-being, and develops their skills. Children get help with their homework, enjoy a healthy snack, and participate in various supervised activities.

The After School programme benefits from the Community Childcare Subvention (CCS) Programme and parents can get financial support through the National Childcare Scheme, which helps make after-school care more affordable based on family income or the child's age.



Our Outcomes 2023

- ▶ 13 children registered in the service
- ▶ Result of parent survey showed satisfaction with Under the Tree services, and staff engagement with the children
- ▶ Two Tús Participants received valuable work experience placements in the Afterschool services

Our After School program goes beyond just helping with homework and providing a safe space. We aim to offer enjoyable learning experiences where children can interact with friends outside of school and pick up new skills. From basic cookery to arts and crafts, the program is designed to encourage curiosity and support skill development in a relaxed and engaging environment.



Afterschool premises

LOCAL AREA EMPLOYMENT SERVICE

Intreo | Partner

Funded by Department of Social Protection

The Local Area Employment Services (LAES) is funded by the Department of Social Protection (DSP), which works with long term unemployed clients who are farthest from the labour market and who experience barriers to labour market participation.

People in receipt of Job-seekers payments are referred to the LAES by the DSP and we work with each client to support and assist them towards gaining employment. Our caseworkers provide a supportive and friendly service to assist job seekers in their journey towards employment. Our caseworkers offer specialised services in job search skills including tailored CVs, career guidance, information and training, education options, assistance in job applications and interview skills and support. The service is personalised to suit each person's needs.

Our Outcomes 2023

- ▶ 4 new caseworkers joined the team
- ▶ 574 clients engaged in the service
- ▶ 4.5/5 Customer Satisfaction rating
- ▶ Established 5 outreach offices
- ▶ 567 Personal Progression Plans completed with clients



Some of our team attending the Tipperary ETB Open Morning in the Construction Skills Training day in Tipperary Town



Our caseworkers with their Waterford colleagues, attending training and information day around adult literacy

OFF THE GROUND

From having no employment service programme in the past, in 2023 STDC successfully expanded the Local Area Employment Service (LAES) in conjunction with its partners Waterford Leader Partnership and Waterford Area Partnership. We recruited and trained six full-time caseworkers who set up five outreach offices, reaching over 570 long-term unemployed clients.

Our caseworkers worked tirelessly to understand each client's unique challenges and strengths, providing tailored support that included CV preparation, interview planning, and skills training.

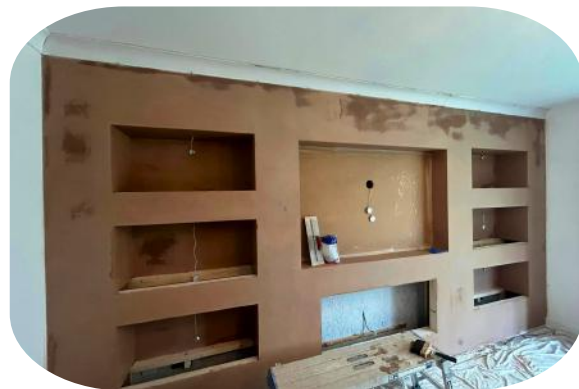


“
My Caseworker is extremely helpful, making complex processes clear and always taking the time to listen to my concerns. His pleasant demeanour has made our interactions very positive.

LAES CLIENT

The impact has been profound. Many clients, previously facing significant barriers to employment, have now found stable and rewarding jobs, contributing to the local economy and improving their quality of life.

JOHN'S JOURNEY



John had been out of work for a period of time when he was referred to the LAES. His caseworker quickly recognised that he had a strong background in plastering and construction work and was eager to get back on his feet, but seemed to have limited opportunities. It was clear that John had an interest in starting his own business and his LAES caseworker connected him with an officer from SICAP, another programme operated by STDC. John was provided with guidance on business planning, budgeting, marketing and the various financial supports

This support and guidance gave him the tools and confidence he needed to turn his dream into reality. With ongoing support from both programs, John launched his own plastering business, Casey Plastering Services. His dedication and hard work, combined with the support and resources from his caseworkers, led to his business thriving in the local community.

RURAL DEVELOPMENT (LEADER) PROGRAMME



Funded by the EU and the Department of Rural & Community Development

The EU LEADER programme provides funding and support to communities and businesses to carry out projects that contribute to the development of their area. STDC delivers the programme in South Tipperary with our partners in Tipperary County Council and the Local Community Development Committee. In 2023 the last LEADER programme (2014-22) was completed having invested €6.2m across 128 enterprise and community projects and creating or sustaining over 300 jobs.

During 2023, STDC carried out an extensive community consultation in preparation for the new LEADER programme 2023-2027. We played a key role in developing the Tipperary Local Development Strategy which was one of the first approved in Ireland.

Our Outcomes 2023

- ▶ €725k grant aid invested in 19 community projects
- ▶ €710k grant aid invested in 12 enterprises
- ▶ 10 Social Enterprise and 3 SMART Village plans developed
- ▶ 118 people completed training in sustainable Development



Participants on STDC Biodiversity Training Field Trip March 2023

MURALS AT TIPPERARY TOWN

This exciting community-based arts project was spearheaded by Tipperary Town Revitalisation CLG (TTR) and funded under LEADER. Five unique street murals under the themes of Youth, Biodiversity, Heritage and Culture were designed and installed by world-renowned national and international artists across the town. The process of creating these stunning works of art included extensive community engagement from local community and voluntary groups, young people, schools, tidy towns groups and residents' associations. Creative workshops and community events gave the community a true sense of ownership of the project.

The impact of these Murals in prominent locations is really striking and they are some of the most shared and promoted images from the town. STDC has worked closely with TTR and secured LEADER funding for a number of heritage, landscape design and planning projects in Tipperary Town.



The Tipp Town Murals Project has attracted so much positive attention. It really created a buzz around the town when the street artists were working. The help from STDC has been invaluable in getting the LEADER funding approved.

MICHAEL BEGLEY, MANAGER, TIPPERARY TOWN REVITALISATION

BLOOMING IN BALLYPOREEN



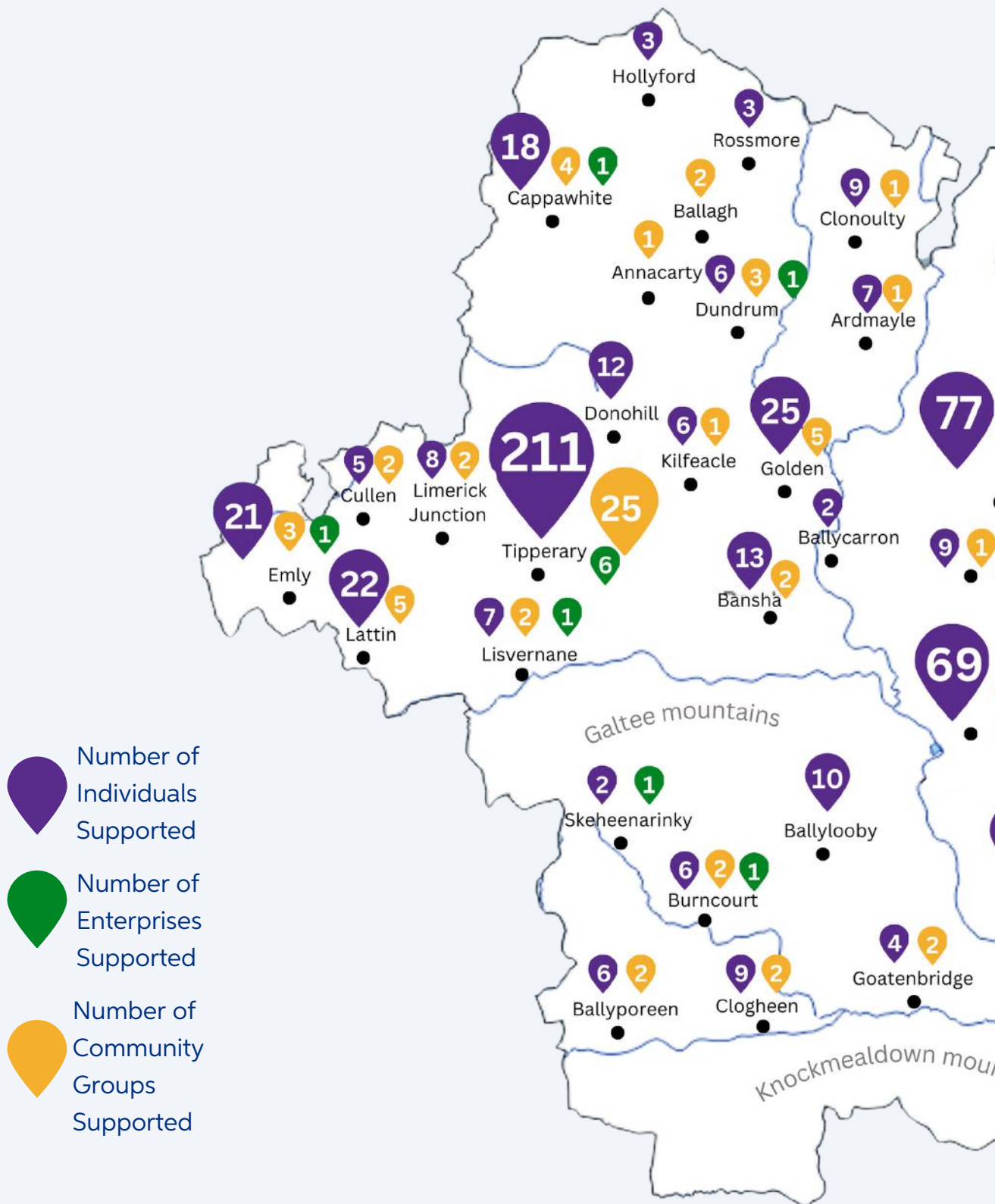
The community garden is a brilliant amenity to have in our locality. Its a great place for young people to meet their friends and it is so safe, it is just fantastic to have an amenity like this in our community. Its good for myself also to meet friends, go for a walk after work and just chill.

MICHAEL GEARY, BCC

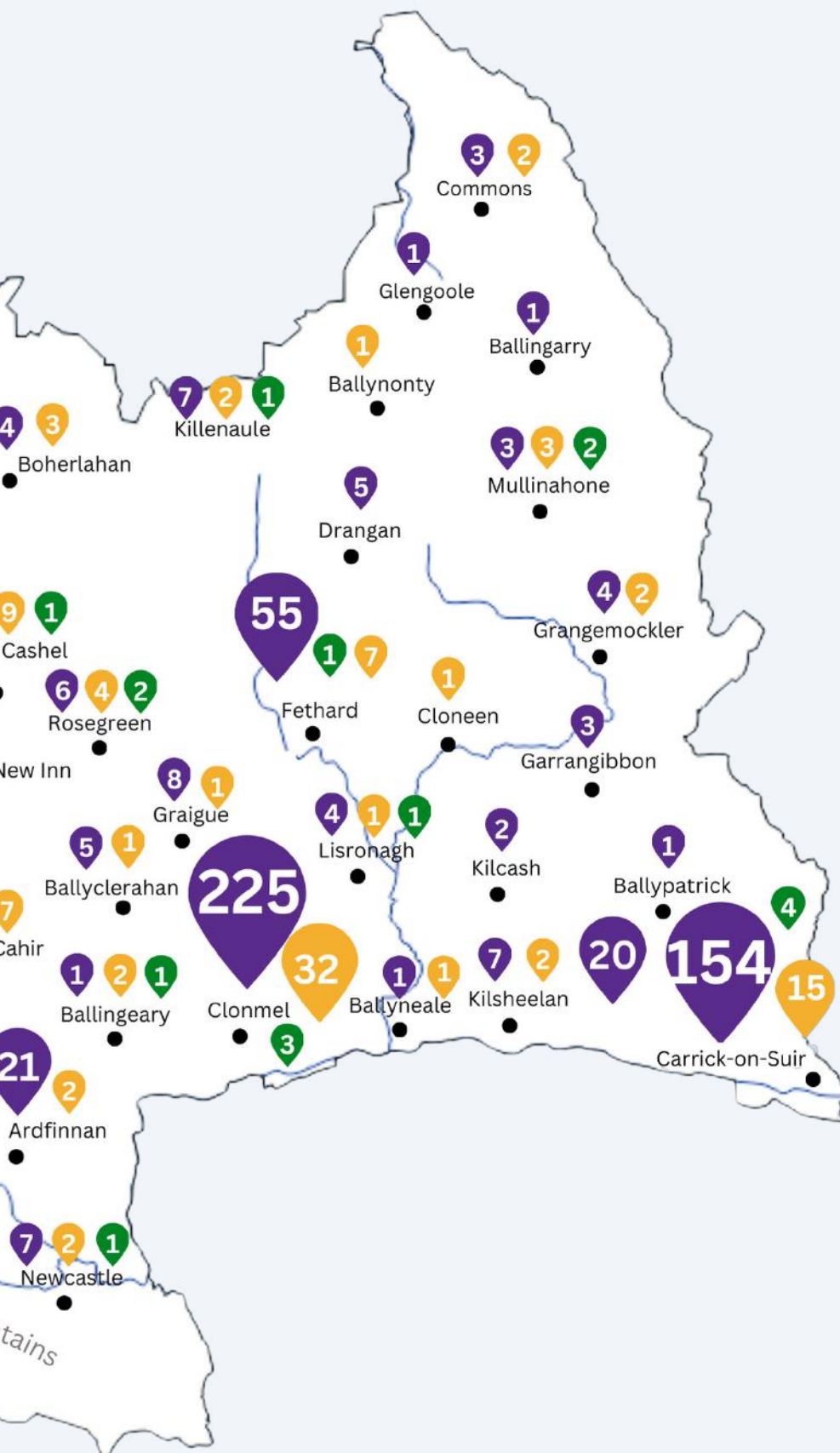
Ballyporeen Community Council (BCC) is a dynamic community group that has led the revitalisation of the area since 1978. STDC has a long track record of supporting them to implement their development plans. Most recently, they sought funding to develop a community eco biodiversity garden and social recreational area. With LEADER funding, Ballyporeen now has a wonderful multifunctional space with wildflower meadows, trees, native shrubs, nest boxes, seating etc.

The river has been fenced off leaving a wild strip adjacent to a community walkway. There is also a hard area for tennis and handball including a practice wall. The garden has become an oasis for health and wellbeing with people of all ages and abilities visiting to relax or socialise or informally play sport. As one resident told us "We regularly walk along the path in the Community Garden. It is a pleasure to see the growth of the trees and shrubs which enhance the area and see many insects too. Our Orchard grew a few apples for its first season which was very encouraging."

OUR IMPACT ACROSS



SOUTH TIPPERARY 2023



*Please note that in the interest of clarity, locations are approximate and could have been combined

RURAL RECREATION



**Rural
Recreation
Officer**

Funded by the Department of Rural and Community Development

STDC has employed a Rural Recreation Officer since 2008. The RRO covers all of County Tipperary. The work of the RRO is guided by the strategic values of “Embracing Ireland’s Outdoors 2023 – 2027”. This focuses on bringing a more joined-up approach to the development of outdoor recreation infrastructure. STDC plays a pivotal role in delivering on this important work in County Tipperary. Maintenance of walkways is another key element of our work. STDC, aided by participants on our Rural Social Scheme, work with and support landowners and communities along Walk Scheme Trails. We support other communities in their work in development and enhancement of walking trails within their local area.

Our Outcomes 2023

- ▶ 12 Walks Schemes managed and monitored in 2023. 174 landowners received a combined payment of €224,000. Additional €16,300 secured for general maintenance.
- ▶ Supported Tipperary Tourism in promoting Tipperary’s walks and recreational amenities. Also assisted in making of the TV programme Tracks and Trails about St. Declan’s Way.
- ▶ 1 walking trail received funding under the Outdoor Recreation Infrastructure Scheme with a total value of €20,000
- ▶ 7 walking trails received funding under the Walks Scheme Development Fund to a total value of €54,224



A new kissing gate installed at Suirville



Hiking on a trail

TIPPERARY IS A WALKERS PARADISE

The East Munster Way goes from Carrick-on-Suir to Clogheen in Tipperary. It partly passes through Co. Waterford and links up with the Avondhu Way and the South Leinster Way to form part of a coast-to-coast walking route.

Bill, a 77-year-old retired sea captain from Houston, Texas, recently walked the East Munster Way and South Leinster Ways. He said what he enjoyed most about his walk on the East Munster Way was that the hiking paths in this region aren't famous for any particular natural wonders like the more popular routes offered. Instead, they offer a chance for quiet walks amidst working farms and rolling hills." Bill also had the highest praise for the local Bed & Breakfast hosts, whose warm hospitality made his stay truly special.



It wasn't just the accommodation that left a mark; the cosy, inviting atmosphere of the small pubs he visited became cherished highlights of his journey.

South Tipperary Development Company (STDC) plays a vital role in developing and maintaining walking routes, such as the East Munster Way which is walked by the casual walkers and hikers alike. With Increasing foot traffic comes the necessity for upkeep and improvement works. Recent improvement works carried out by STDC along the East Munster Way have included a full redesign and installation of the trailhead map boards at many key points along the route e.g. at Carrick on Suir, Kilsheelan, Clonmel and Clogheen.

Additionally, Trail re-routes over the years have resulted in the need for two new trailheads with all information and trail metrics updated to current standards.

STDC collaborates with stakeholders which include Tipperary and Waterford County Councils and Coillte to ensure the trail's long-term sustainability and its positive impact in the local area. Through our ongoing walk maintenance and development work and our joined work with partners, STDC is committed to ensuring that walking routes across South Tipperary are accessible and enjoyable for all users.

— “ —

I enjoyed walking on top of a hill and looking down at the patchwork quilt of farms, knowing there was ancient history in the patterns of these stone walls.

BILL, AN AVID HIKER

RURAL SOCIAL SCHEME



Funded by the Department of Social Protection

The Rural Social Scheme (RSS) is an income support initiative to provide part-time employment opportunities in community and voluntary organisations for farmers in receipt of certain social welfare payments. Participants on the RSS work 19.5 hours per week which can be flexible to accommodate the participants' farming responsibilities.

The work undertaken on the RSS is varied and is to support local community, voluntary and not-for-profit organisations. Work can include maintaining community and sporting facilities, tidy towns work, working in community cafes and shops, working in charity shops, providing administrative support to community and voluntary groups, social care and support of the elderly.

Our Outcomes 2023

- ▶ 29 participants on the Rural Social Scheme worked over 30,888 hours in communities
- ▶ All participants received training relevant to their roles e.g. Manual Handling, Small engine maintenance, etc
- ▶ Participants provided essential services to 33 communities who availed of the RSS Participants
- ▶ 6 Tidy Towns Groups increased their scores as a result of the work carried out by RSS Participants



RSS Participants performing essential Village and Walking Trail maintenance

RSS - MATCHING SKILLS WITH JOBS

Richard Walsh is heading into his eighth year of work placement on the Rural Social Scheme. He works with Clonmel Tourism which incorporates Kilsheelan Tidy Towns Group and has a keen interest in conservation and environmental matters making Clonmel Tourism and Kilsheelan Tidy Towns a perfect match for him. Richard brings his own creative skill set to the planting of shrubs as can be seen from the picture. Additionally, he is involved in the maintenance of a publicly accessible walled garden on the Blueway from Clonmel to Kilsheelan.



Richard is always keen to progress and learn more about himself and what he can bring to his work and others on any given day. He has completed a number of training courses which are based on his own area of interest and relevant to his work placement on the Rural Social Scheme. Richard enjoys his work on the RSS. He loves being out and about in the community.

“

Richard is a vital cog of Kilsheelan tidy towns machine. He is very interested in our gardening and biodiversity work. This has helped Kilsheelan to win a gold medal in the Tidy Towns competition for the last 7 years.

SIMON MOLLOY – CLONMEL TOURISM

A LIFELINE FOR ANNACARTY TEA ROOMS

Annacarty Tea Rooms is a remarkable Social Enterprise which was set up in the quiet rural village in west Tipperary in November 2015 in response to the closure of most other services in the village. The local and wider community have embraced this excellent facility and enjoy the quality service provided by the tearooms in comfortable surroundings where people can meet, eat and socialise.



South Tipperary Development has been supporting this venture since its inception. Currently STDC has two Rural Social Scheme participants Paula and Patricia working in the Tea rooms. Their work is essential to the continued success of the business. Paula loves the atmosphere and enjoys being able to reconnect with people after being at home for many years rearing her children. Patricia loves the social interaction and being able to get out and work in her community.

“

The Rural Social Scheme is vital to the ongoing success of this enterprise. We just would not be able to keep the door open without the support of the Local Development Company.

LIAM O'BRIEN MANAGEMENT COMMITTEE

SOCIAL INCLUSION AND COMMUNITY ACTIVATION PROGRAMME

Funded by Department of Rural and Community Development

The Social Inclusion and Community Activation Programme (SICAP) is an initiative designed to help individuals and communities who are experiencing disadvantage. SICAP offers a range of services to qualifying individuals including training, employment supports, and other help with starting a business. As part of our work on SICAP, we aim to give people the skills and confidence they need to improve their situation. SICAP also works directly with local communities, helping them to identify their specific needs and challenges. In conjunction with the community, it then provides support tailored to address these needs. SICAP is about giving people and communities the tools and support they need to overcome barriers and build better futures for themselves.

Our Outcomes 2023

- ▶ Supported 473 Individuals (exceeding our target)
- ▶ Supported 42 Local Community Groups (exceeding our target)
- ▶ 51 individuals progressed into employment or self-employment.
- ▶ 247 individuals participated in either accredited or unaccredited training
- ▶ 6 social enterprises supported



SICAP Staff, Tipperary County Council staff and members at the opening of Glenconnor Estate in Clonmel (a Community supported by SICAP)

CARRICK MEALS ASSIST - SICAP ROLLS IN

Carrick-on-Suir Meals Assistance Service, a Social Enterprise based in Carrickbeg is a voluntary self-funded group dedicated to providing hot nourishing food to pensioners. In 2023 they availed of a SICAP Social Enterprise grant to purchase a new item of kitchen equipment to ensure the safe and correct sealing of freshly prepared dinners. Carrick Meals Assistance Service provides 200 freshly prepared meals per week, Monday to Friday to older people living in Carrick on Suir and the wider area. The service is run by a team of almost 30 volunteers all of whom play valuable roles in preparing, cooking and delivering food to the older people living alone who use the service.



“
Replacing the sealer was a significant cost for us to cover but was made much easier thanks to the social enterprise grant we received from SICAP. The new machine allows us to work safely providing the meals and comply with health and safety requirements

DEBBIE COONEY AND JAMES O'NEILL, CARRICK MEALS ASSIST

In South Tipperary SICAP supports the development, capacity and sustainability of a range of social enterprises including community centres, meals on wheels services, community cafes, cultural and heritage centres to name but a few.

SUPPORTING PEOPLE TO A BETTER FUTURE

At 39, Jane (name changed) was juggling the demands of raising her child alone, managing a part-time cleaning job, and dealing with financial pressures. Her initial engagement with SICAP was difficult. Her anxiety led her to miss 3 appointments. Understanding her struggles, the SICAP officer reached out with phone calls and reassurance, ultimately helping Jane attend her first appointment. As part of developing a Personal Action Plan several problems surfaced: substance issues, ongoing recovery challenges, and low self-confidence, worsened by a recent family bereavement. It was evident that Jane required more than just job readiness support; she needed assistance with these broader issues.



Her SICAP Officer helped Jane work through her issues whilst providing her with practical supports to apply for full-time positions that matched her skills. With ongoing support, Jane gained confidence and attended an interview for a full-time job, and was shortlisted for the position and placed on a panel. This accomplishment provided a significant boost to her self-esteem.

SICAP's intervention made a noticeable difference in Jane's outlook and ability to face future challenges.

“
I met with one of the SICAP Development Officers, who guided me through every step along my journey. The support I received was exceptional, and for the first time in years, I am optimistic about my future.

SICAP CLIENT

TRAVELLER PRIMARY HEALTH CARE PROJECT

Funded by the HSE

The Primary Health Care for Travellers Project (PHCTP) is a partnership between the HSE And South Tipperary Development Company. The project focuses on the promotion of health and wellbeing within the community by delivering key health messages in accordance with the HSE Social Inclusion Southeast Community Healthcare (SECH) Traveller Health Programme.

The STDC Traveller Primary Health Project was established in 1999. It works with Traveller Families in Clonmel, Cahir, Fethard, Carrick on Suir and Killenaule. It is a peer led programme in which Travellers engage and work with their own community to promote physical, social and mental wellbeing of Travellers. There are currently 3 part time Traveller Healthcare Workers And 1 Co Ordinator.

The work is underpinned by a community development approach, using peer led and culturally sensitive ways of working to engage the target population.

The 3 key areas of health that were prioritised for the team in 2023 were mental health, cardiovascular health and diabetes management and prevention.

Our Outcomes 2023

- ▶ Cardiovascular and diabetes health messages delivered to over 80 participants
- ▶ Mental health and wellbeing workshops delivered to over 80 participants
- ▶ Worked Across 8 Locations inclusive of Clonmel, Cahir, Fethard, Carrick on Suir and Killenaule
- ▶ Positively impacted 80 families through tailored support
- ▶ Period Dignity Project reached over 100 women



Members of the Traveller Healthcare Project taking part in events to mark Mental Health Week

YOUTH ART GROUP

An 8-week Art and Culture Workshop was delivered to a group of 10 young girls as a positive mental health initiative. The primary purpose was to bring a group of young girls together in a supportive and friendly atmosphere where they could chat and jointly create a piece of art with support from the community health workers. The group created a piece of art that focused on the persons relationships with their own history, culture and significant others and places. This project gave the girls an opportunity to explore who they are and also to explore what Traveller culture means to them. The art group gave the girls a social outlet and time for them to chat with each other which is so important for the health and wellbeing of the girls. It also gave them the space to speak freely and openly about issues that are important to them. The girls engaged very well in the project and enjoyed creating the piece. The group also led to increased engagement with the Health project and signposting to services in the community ie local youth club.



SUPPORTING MOTHERS AT TIPPERARY UNIVERSITY HOSPITAL

The Primary Healthcare for Travellers Project has been a member of the Tipperary University Hospital Inclusion Group since 2020. The group meets every quarter of the year.

Most Traveller women attend the maternity services and often have large families. From discussions with the local Traveller women they had reported that most of their engagements with maternity services in TUH were positive but some identified that more information around appointments and what to expect would be helpful. The PHCTP hosted an information morning for the Traveller women in The Clonmel Resource Centre.



“

Really enjoyable morning with the Traveller women. There was great interaction and questions. This was really good to meet with the staff and to get this information

ELLEN O' REILLY

The morning was facilitated by the Director of Midwifery along with a dietician, women's physiotherapist and a midwife. 20 Traveller women attended the event. 2 of the participants attended with newborn babies and 1 of the participants was due to have her baby. The facilitators gave the participants information of what to expect at antenatal appointments along with information on postnatal care and breastfeeding. Advice on accessing follow up care was also given.

TÚS (COMMUNITY WORK PLACEMENT INITIATIVE)



Funded by the Department of Social Protection

The Tús Programme offers individuals who have been unemployed for at least one year the chance to find part-time work placements with local community and voluntary organisations. It helps participants regain a work routine, develop new skills, and build confidence while contributing to their communities. Participants work 19.5 hours per week for a year, with access to training to enhance their skills for future employment. Many participants found their time on Tús to be very beneficial.

Tús is vital to the effective functioning of many communities in South Tipperary, particularly since Covid where many people have stood back from volunteering in their local community.

Our Outcomes 2023

- ▶ 113 communities benefited from 119,808 hours work provided by Tús participants
- ▶ €25,800 invested in community projects to support work carried out by participants
- ▶ Role specific core skills training provided to all participants
- ▶ 33% of participants who were previously long term unemployed progressed to training, alternative placement or employment



Tús team leaders attending Age Action Expo in the TUS Campus in Thurles



Tús participant getting Old St Marys Church ready for the Christmas festivities.

FINDING PURPOSE THROUGH THE TÚS PROGRAMME : SEAN'S TESTIMONIAL

Sean, from Lisronagh, shares how participating on the Tús Programme has positively impacted his life. Sean joined the scheme in April 2023. At the outset, he met with his Team Leader who chatted to Sean about his interests, skills and hobbies. His Team leader recommended a placement with Moyle Rovers GAA. Sean says "I am thoroughly enjoying the experience. It's better than staying at home doing nothing,"



Due to health reasons, Sean can only work part-time, and after a year of unsuccessfully applying for jobs, he found himself frustrated. "I was sending CVs left, right and centre, and getting nothing,". Sean went on to say that the Tús Programme has provided him with a new sense of purpose. "It gets me out of the house, gives me responsibility, and I love the flexibility of fitting in my 19.5 hours each week. Plus, I enjoy doing something different." He wholeheartedly recommends the programme to others in similar situations.

A FITTING PLACE FOR THE COMMUNITY

The Edel Quinn Grotto is part of the community of the Old Bridge area of Clonmel. It is to be found next to the old church and graveyard of St. Nicholas' Church. The site was formerly known as "The Bleach Yard" where residents would wash clothes in the stream that flowed through the site. In the 1950's a committee was formed of the local residents who transformed the site into the religious grotto which still stands today, incorporating a statue of our Lady of Lourdes with St. Bernadette kneeling in prayer. Over the years the committee dwindled, and the upkeep of the site was overseen by the local resident's association. The committee set about cutting the grass and the shrine was tidied up for the annual Mass which takes place early on the June Bank Holiday Monday every year.

The Tús Programme and STDC came on board in 2015 to help with the upkeep and maintenance of the Grotto. Thanks to the innovation of many of the Tús participants and financial support from STDC, the Grotto has become not a labour but a labour of love. This has been done by the Tús participants through removing some of the tired shrubbery/tree's and replacing those with a variety of plants/shrubs and flower boxes which were built by the Tús participants and now produce life and colour throughout the year.



“

Thanks to the great work carried out by the Tús participants, the Grotto now offers a space within a busy community to sit and reflect on life

OLD BRIDGE GROTTO RESIDENTS COMMITTEE

UKRAINIAN REFUGEE SUPPORT PROGRAMME & COMMUNITY CAR INITIATIVE



Funded by Department of Rural and Community Development & Tipperary County Council

The main objectives of the Ukrainian Refugee Support Programme are to provide support for the medical, educational, cultural needs and job opportunities for refugees living in South Tipperary and to unify them and facilitate their integration into Irish society. Also, organise and deliver local events that support integration.

The Community Car Initiative (CCI) is an appointment-based service which provides essential transportation to Ukrainian refugees in hard-to-reach areas not currently serviced by public transport in South Tipperary.

Our Outcomes 2023

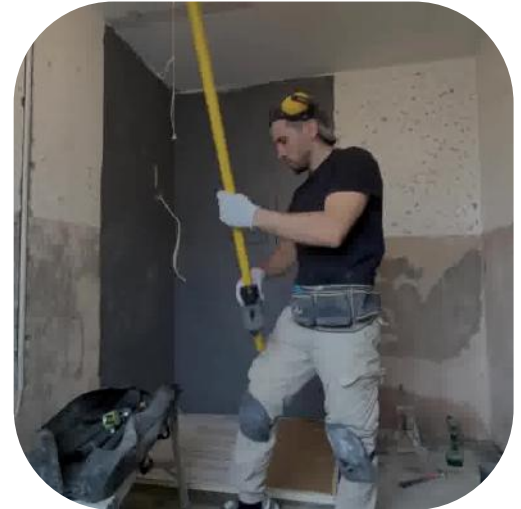
- ▶ 16 short-term and long-term courses were provided (Employment readiness, health and well-being, arts and crafts)
- ▶ 10 events were organised to facilitate integration
- ▶ 15 trips were facilitated for integration and cultural awareness
- ▶ 6 collaboration projects took place
- ▶ CCI stats:
 - Distance travelled 50119 km
 - Requests 729
 - June-highest request number 134 people
- ▶ Fáilte Isteach (English language) classes:
 - 3 locations
 - 62 students
 - 18 tutors
 - 400 classes



Community Car waiting for clients

BRICK BY BRICK: ASAN'S ROAD TO SUCCESS

Asan fled the war in Ukraine and arrived in Ireland in the autumn of 2022. His first place of residence was the Dundrum House Hotel, where he received support to improve his English language skills and successfully completed the SAFE PASS course, which was facilitated by Ukrainian Support workers from STDC in November. The support from STDC was invaluable for Asan. Ukrainian Support workers provided him with the resources and training he needed to adjust to his new surroundings, helping him to settle in and build a future. Their dedication to helping refugees like him made it easier for Asan to join the workforce and gave him the confidence to chase his dream of starting his own business.



“

My genuine desire and the assistance of the STDC staff guided me to success.

**ASAN, UKRAINIAN
REFUGEE**

Given Asan's extensive experience in interior finishing, he worked at the hotel restoring rooms for newly arrived Ukrainians. Thoughts of starting his own business never left Asan's mind, and soon, that dream became a reality. He opened his own business, primarily focusing on bathroom and kitchen renovations, as well as other types of interior and exterior work. Since the spring, Asan has hired another Ukrainian who also completed the SAFE PASS course organized by STDC. As he began working for himself, Asan met other professionals specializing in plumbing and electrical work, which significantly expanded the range of services his company could offer.

Asan is actively learning about new materials and technologies that are common in this country. This is not easy when your level of English is not high enough, but he is making an effort. "Starting to work in Ireland, I could never have imagined how my life would unfold. Now I can say that if you have a strong desire and put in the effort, you can always succeed; it may not happen right away, but it will come with time." Currently, Asan has no issues finding work or clients. After working for about a year as a sole trader, he is now able to be independent from social welfare and is considering relocating, as bigger cities offer more opportunities.



SUPPORTED COMMUNITY & VOLUNTARY ORGANISATIONS

| | |
|---|----------------|
| ABI Acquired Brain Injury | SICAP |
| Aherlow GAA | Tús, RSS |
| Aherlow Road Resident's Group | RSS |
| Aherlow-Kilross Community Council | Tús, RSS |
| Annacarty Tea Rooms | RSS, Tús |
| Ardfinnan Community Council | RD |
| Ardfinnan Tidy Towns | Tús |
| Ardfinnan, Ballybacon, Grange, Newcastle Gunclub (ABGN) | Tús, RR |
| Ardmayle Graveyard | Tús |
| Ballagh Mens Shed | SICAP |
| Ballagh Social Centre Group | SICAP |
| Ballylooby Community Council | RD |
| Ballylynch Community Coming Together Group | SICAP |
| Ballylynch Residents Committee | Tús, SICAP |
| Ballyneale Tidy Towns & Community Sports Field | Tús |
| Ballynonty Community | SICAP |
| Ballyporeen Community Council CLG | RD |
| Ballyporeen GAA | RD |
| Bansha GAA | Tús |
| Bansha NS | Tús |
| Boherlahan Community Association (BCA) | SICAP |
| Boherlahan Dualla GAA | Tús |
| Burncourt Celtic | Tús |
| Burncourt Community Centre | RSS, Tús |
| Cahir Community Centre | Tús |
| Cahir Daycare Centre | Tús |
| Cahir Development Association CLG | RD, Tús, SICAP |
| Cahir GAA Traveller Support | SICAP |
| Cahir GAA Club | Tús |
| Cahir Mens Shed | SICAP |
| Cahir Tidy Towns | Tús |
| Canon Hayes Recreation Sports Centre | RSS |
| Cappawhite Community Resource Centre and Gym | Tús, SICAP |
| Cappawhite Active Retirement | SICAP |
| Cappawhite GAA Club | RD, Tús |
| Cappawhite Old & New Graveyards Committee | Tús, RSS |
| Carrick Davins GAA | Tús |
| Carrick on Suir Amateur Musical Society | SICAP |
| Carrick on Suir Development Association (COSDA) | RD |
| Carrick on Suir Handball Association | Tús |

SUPPORTED COMMUNITY & VOLUNTARY ORGANISATIONS

| | |
|--|------------|
| Carrick on Suir Mens Shed | SICAP |
| Carrick on Suir LGBTI Group | SICAP |
| Carrick on Suir Musical Society | Tús |
| Carrick Swans GAA | Tús |
| Cashel & District Social Services | Tús, SICAP |
| Cashel Tidy Towns | Tús |
| Circle of Friends Cancer Support Group, Tipperary Town | Tús |
| Clanwilliam RFC | Tús |
| Clerihan Community Group | RSS, Tús |
| Clogheen Tidy Towns | RSS, Tús |
| Clogheen Mens Shed | SICAP |
| Clonmel Celtic FC | Tús |
| Clonmel Junction Festival | Tús |
| Clonmel Men's Shed | SICAP |
| Clonmel Og GAA | Tús |
| Clonmel Golf Club | Tús |
| Clonmel Rugby Club | RSS, Tús |
| Clonmel Stadium | Tús |
| Clonmel Tourism | RSS |
| Clonmel Town FC | RD |
| Clonmel Union of Parishes | Tús |
| Clonmel Youth Training Enterprise | Tús |
| Clonoulty Tidy Towns | Tús |
| Cluain Training & Enterprise Centre | SICAP |
| Commons Residents Group | SICAP |
| Commons Tidy Towns | SICAP.Tús |
| Cooleens & Heywood Close Residents Group | SICAP |
| Cullen Graveyard | RSS |
| Cullen Tidy Towns | RSS |
| Cullen-Lattin AFC | RSS |
| Daltons Heritage House | Tús |
| Dualla Community Association CLG | RD |
| Dundrum Men's Group | SICAP |
| East Munster Way, Graige group | RR |
| Elm Tree Community Centre | Tús |
| Emly Community Council | RSS |
| Emly GAA | RSS |
| Emly Historical Research | Tús |
| Fethard and District Day Care CLG | RD, Tús |
| Fethard and Killusty Ballroom CLG | RD |

SUPPORTED COMMUNITY & VOLUNTARY ORGANISATIONS

| | |
|---|--------------|
| Fethard Commerce & Tourism | Tús |
| Fethard Men's Shed | SICAP |
| Fethard Regional Community Sport and Recreational Campus CLG | RD, Tús |
| Fethard Youth Centre (Community Council) | Tús |
| Glen Dara Residents Association, Mullinahone | SICAP |
| Glenconnor Hill Residents Association | Tús, SICAP |
| Glengoole Community Group | RR |
| Goatenbridge-Ballybacon Development | Tús |
| Golden Kilfeacle ICA | SICAP |
| Golden Tidy Towns | Tús |
| Golden-Kilfeacle GAA | Tús, RSS |
| Grange Development Association | RD |
| Grangemockler Active Retirement | SICAP |
| Grangemockler Community Sportsfield | RSS |
| Hillview Sports Club | Tús |
| Irish Wheelchair Association Community Centre, Tipperary Town | Tús, SICAP |
| IWA Shop, Tipperary Town | Tús |
| K Plan Community Centre | Tús |
| Kickham Place Residents Association, Mullinahone | SICAP |
| Kilfeacle & District RFC | RSS |
| Killenaule Senior Citizens Club | SICAP |
| Killenaule Women's Group | SICAP |
| Kilross Tidy Towns | Tús, RSS |
| Kilsheelan Tidy Towns | Tús |
| Knockanrawley Resource Centre | Tús, RSS, RD |
| Knockavilla-Donaskeigh Kickhams GAA | RSS, Tús |
| Knockmealdown Active | Tús, RSS, RR |
| Larkspur Park | Tús |
| Lattin GAA | RSS |
| Lattin Tennis Club | Tús |
| Lattin Tidy Towns | RSS |
| Lisronagh Residents Committee | Tús |
| Marl Bog / Multeen Way Committee | RR |
| Marlfield Village Association | Tús |
| Millenium Family Resource Centre | SICAP |
| Mochara Charity Shop | Tús |
| Monard Hall - Ladies Group | SICAP |
| Moyle Rovers GAA | Tús |
| Mullinahone Community Council | RD |
| Mullinahone Mens Shed | SICAP |

SUPPORTED COMMUNITY & VOLUNTARY ORGANISATIONS

| | |
|--|------------|
| NCBI, Carrick on Suir | Tús |
| NCBI, Cashel | Tús |
| NCBI, Tipperary Town | Tús |
| New Inn Tidy Towns | Tús, RD |
| New Inn Parish Council | Tús |
| Newcastle Community Alert | RSS |
| Newcastle NS | RSS |
| Oakland Drive Daycare | Tús |
| Old Bridge Community Association | SICAP, Tús |
| Old Bridge FC | Tús |
| Old St Mary's Clonmel | Tús |
| Oola Youth Club | Tús |
| Pause Slowbreath Start Talking (PSST! - ARH) | SICAP |
| Rehab Care, Bridgewater House | Tús |
| Rehab Care, Knocklofty | RSS |
| River Bank Project | Tús |
| River Rescue Base | Tús |
| Rosegreen Development Association | Tús |
| Rockwell Rovers GAA | Tús |
| Sologheadbeg GAA | RSS |
| South Tipperary Arts Centre | Tús |
| South Tipperary GAA, Clonmel | Tús |
| St Patricks Residents Association | Tús |
| St. Declans Way Committee | RR |
| St. Johns Cathedral Parish Council | Tús |
| St. Johns Residents Group, Carrick | SICAP |
| St. Marys Choral Society | Tús |
| St. Micheal's Junior Boys School | RSS |
| St. Patrick's GAA Club, Cloneen | RD |
| St. Pauls Church, Cahir | Tús |
| St. Vincent de Paul, Carrick on Suir | Tús |
| St. Vincent de Paul, Clonmel | Tús |
| St. Vincent de Paul, Cahir | Tús |
| St.Mary's Church of Ireland | RSS |
| St.Nicholas Boxing Club | Tús |
| Sue Ryder Foundation | Tús |
| The Commons-Ballingarry Community Field | Tús |
| Three Drives Family Resource Centre | Tús |
| Tipperary Citizens Information Centre | Tús |
| Tipperary Clonmel Community LGBTQ+ Pride | SICAP |

SUPPORTED COMMUNITY & VOLUNTARY ORGANISATIONS

| | |
|--|----------|
| Tipperary Community Council / Community Centre | Tús, RSS |
| Tipperary Food Producers Network | RD |
| Tipperary Greenway Project | RD |
| Tipperary Rural Traveller Project | SICAP |
| Tipperary Hills Pitch and Putt Club | Tús |
| Tipperary Mens Shed Network | SICAP |
| Tipperary Hills Handball Alley | SICAP |
| Tipperary Midwest Community Radio | RSS |
| Tipperary Tidy Towns | Tús |
| Tipperary Tourism Clg | RD |
| Tipperary Town Chamber of Commerce | Tús |
| Tipperary Town FC | Tús |
| Tipperary Town Revitalisation CLG | RD, RR |
| Wilderness Rovers FC | Tús |
| Youth Work Ireland Tipperary | Tús, RD |





South Tipperary Development CLG



WWW.STDC.IE



[/SOUTH TIPPERARY DEVELOPMENT COMPANY](https://www.facebook.com/SOUTH TIPPERARY DEVELOPMENT COMPANY)



[/SOUTH TIPPERARY DEVELOPMENT COMPANY](https://www.instagram.com/SOUTH TIPPERARY DEVELOPMENT COMPANY)



[/SOUTH-TIPPERARY-DEVELOPMENT-COMPANY](https://www.linkedin.com/company/SOUTH-TIPPERARY-DEVELOPMENT-COMPANY)



[/STHTIPPDEVCO](https://twitter.com/STHTIPPDEVCO)

