

HOTEL ALEXANDRA

A Timeless Experience Unlocks



OVERVIEW

An additional new line to the established hotel chain managed by Harbour Plaza Hotels & Resorts. Hotel Alexandra is a design-led hotel situated at the heart of Hong Kong Island, exquisitely designed melding timeless Victorian elegance and modern concepts.



LOCATION

The convenient Hotel Alexandra is situated at the heart of Hong Kong Island on the prominent North Point waterfront with spectacular view of the Hong Kong's famous Victoria Harbour and city skyline.



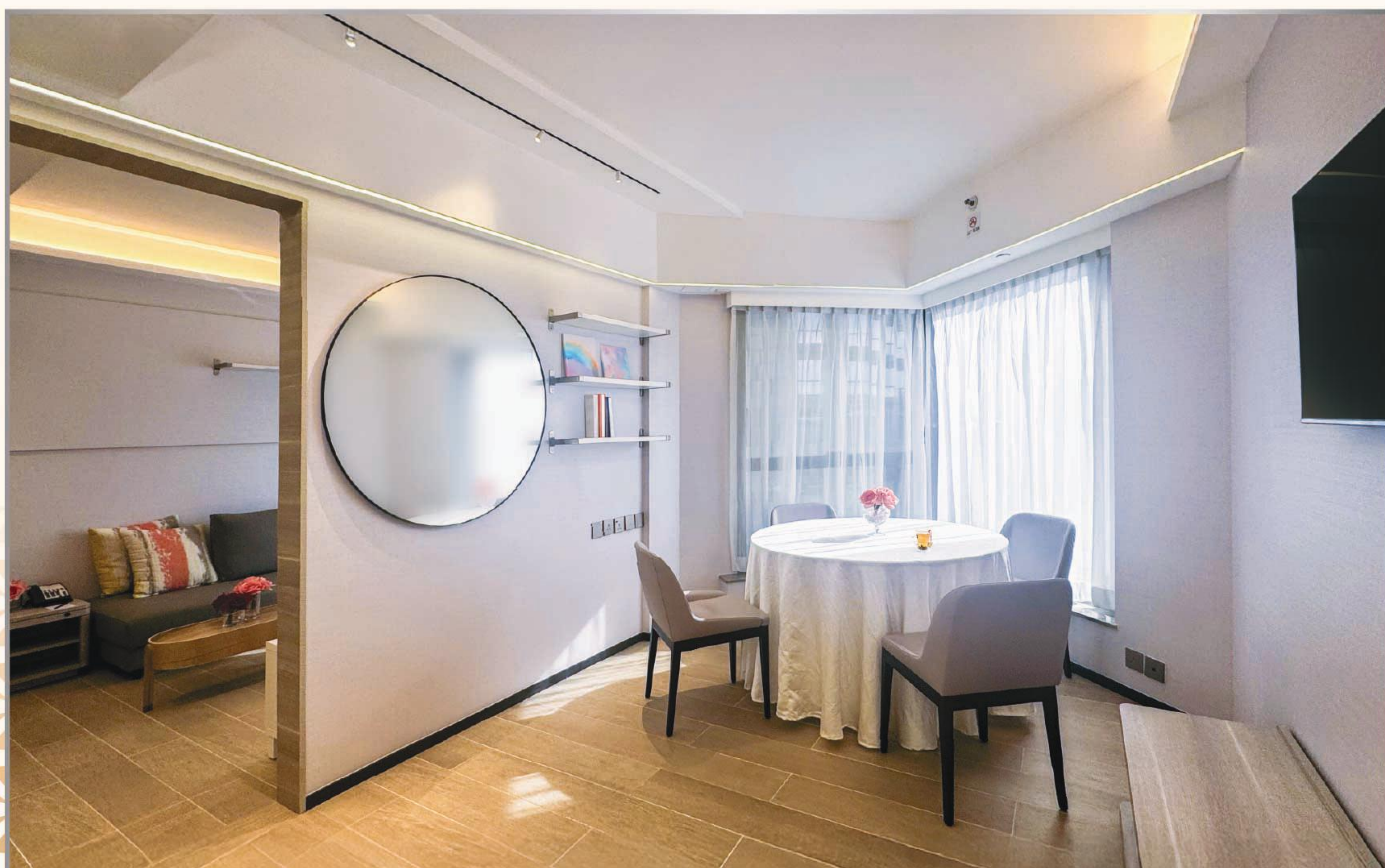
ACCOMMODATION

840 comfortable rooms and suites, all guest rooms feature wood grain floor tiles and individual ventilation system with a myriad of modern facilities which creates a welcoming and comfortable atmosphere.



Alexandra Suite

Designed for comfort and sophistication, the suite offers two bedrooms with ensuite bathrooms, a stylish living area, and a dining space for four. A food preparation area with a 3-door refrigerator, microwave, and washing machine adds convenience, making it ideal for families or groups seeking privacy and luxury.





King Suite

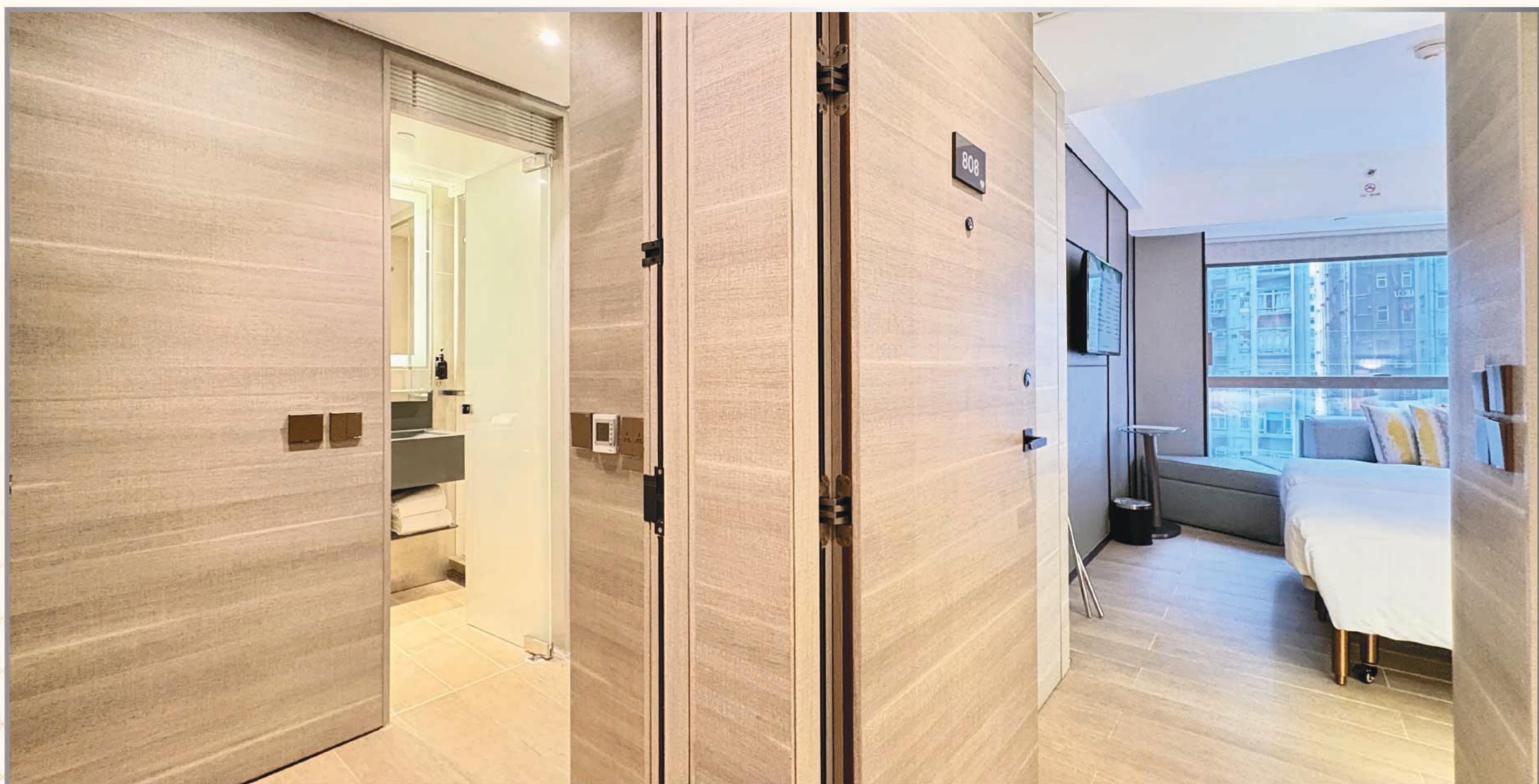
Enjoy incredible city views in the spacious modern suite, featuring a relaxing bedroom with work desk, a separate ample living and dining area with lush furnishings and elegant décor.





Heart

Quaint and cozy stylish connecting rooms appointed with work desk and choice of double, twin beds or combo, Suitable for up to 4 people.



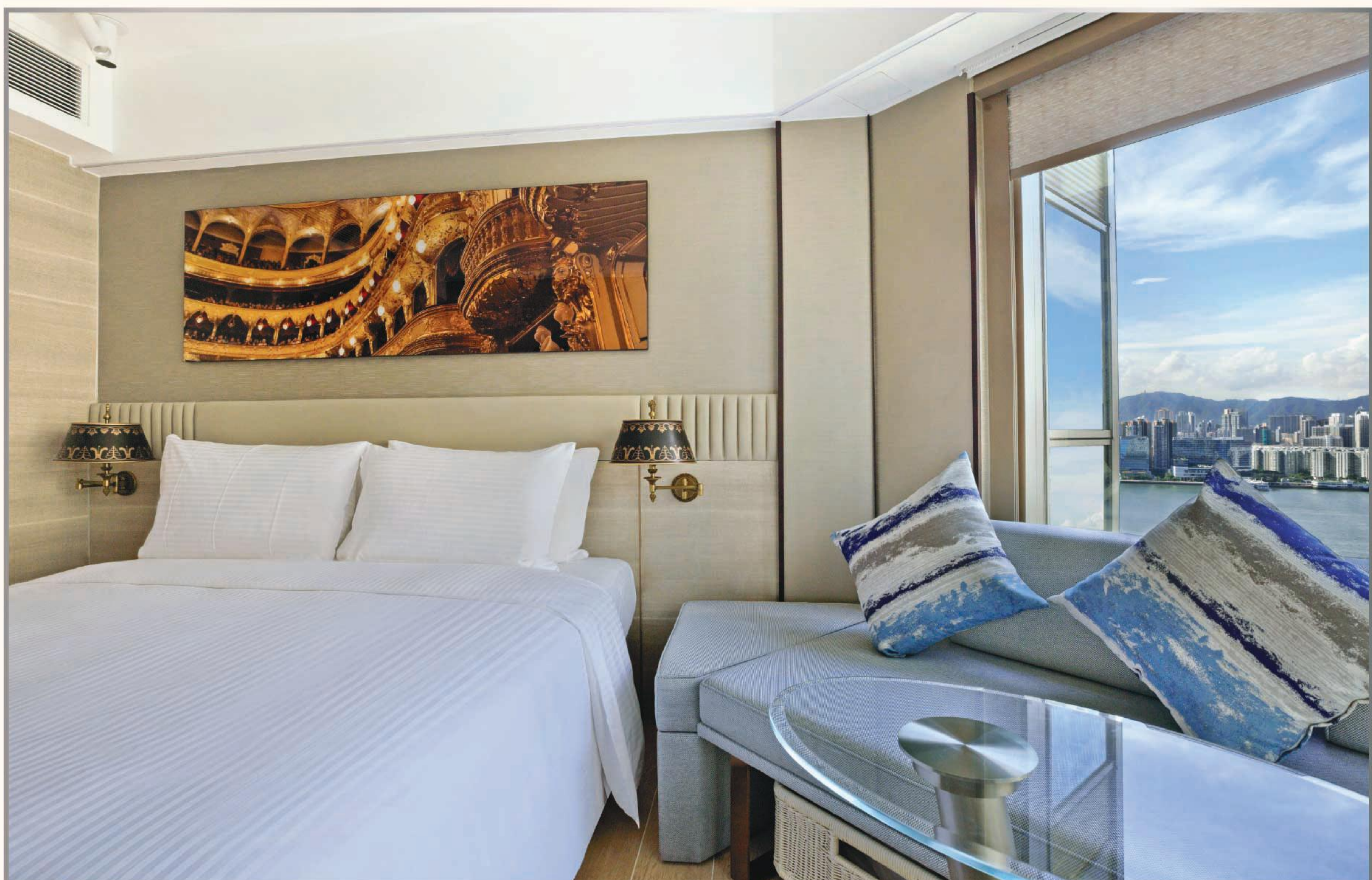


Queen Suite

Spacious modern suite offering a contemporary styling living room with sofa separate from the privacy of the bedroom with work desk, offering an abundance of space for relaxation and work. featuring full-size windows that overlook the sweeping views of nearby community.

Spade

Design-led connecting rooms in natural tone featuring plush double or twin beds and bed sofas. The rooms offer panoramic city views through the full-size windows. Suitable for up to 6 people.



Clover

Modern designer room with 1 double bed or 2 single beds and bed sofa, overlooking stunning views of Victoria Harbour or the vibrant city. Suitable for up to 3 people.



Diamond

Artisanal guestroom with comfortable bedding and work desk, offering cityscape views. Suitable for up to 2 adults and 1 child.



TRANSPORTATION

AIRPORT

Guest can choose from Hotel Limousine (Harbour Plaza Hotels & Resorts Airport Representative Counter B09), the Airport Express Line (approx. 44 minutes), taxi (approx. 50 minutes) or bus (Cityflyer A11, get off at Electric Road Market, approx. 90 minutes).

HIGH SPEED RAIL

Hong Kong West Kowloon Station is located in the city center, adjacent to the MTR Austin Station on the Tuen Ma Line. Guests have the options to travel to and from the hotel via taxis or private cars, with a convenient 17-minute drive from the station. Alternatively, guests can easily access the MTR to reach the hotel.

MTR STATION

The hotel is a two-minute walk from MTR Island Line Fortress Hill station (Exit B). MTR Fortress Hill connects the Hotel to the city's busiest sections.



FACILITIES

SWIMMING POOL

Surrounded by lush plants, the outdoor swimming pool creates a natural protective barrier, offering privacy while being the perfect place to enjoy a nice and refreshing swim under the sun.

Opening Hour :

08:00 - 20:00 (May - September)

09:00 - 20:00 (October - November)

Closed (December - April)





FITNESS CENTRE

Revitalize and stay active at the well-equipped Fitness Centre, where you can explore a variety of workout options to suit your fitness goals.

Opening Hour: 07:00 - 23:00

West Wing Lobby Floor



Café &

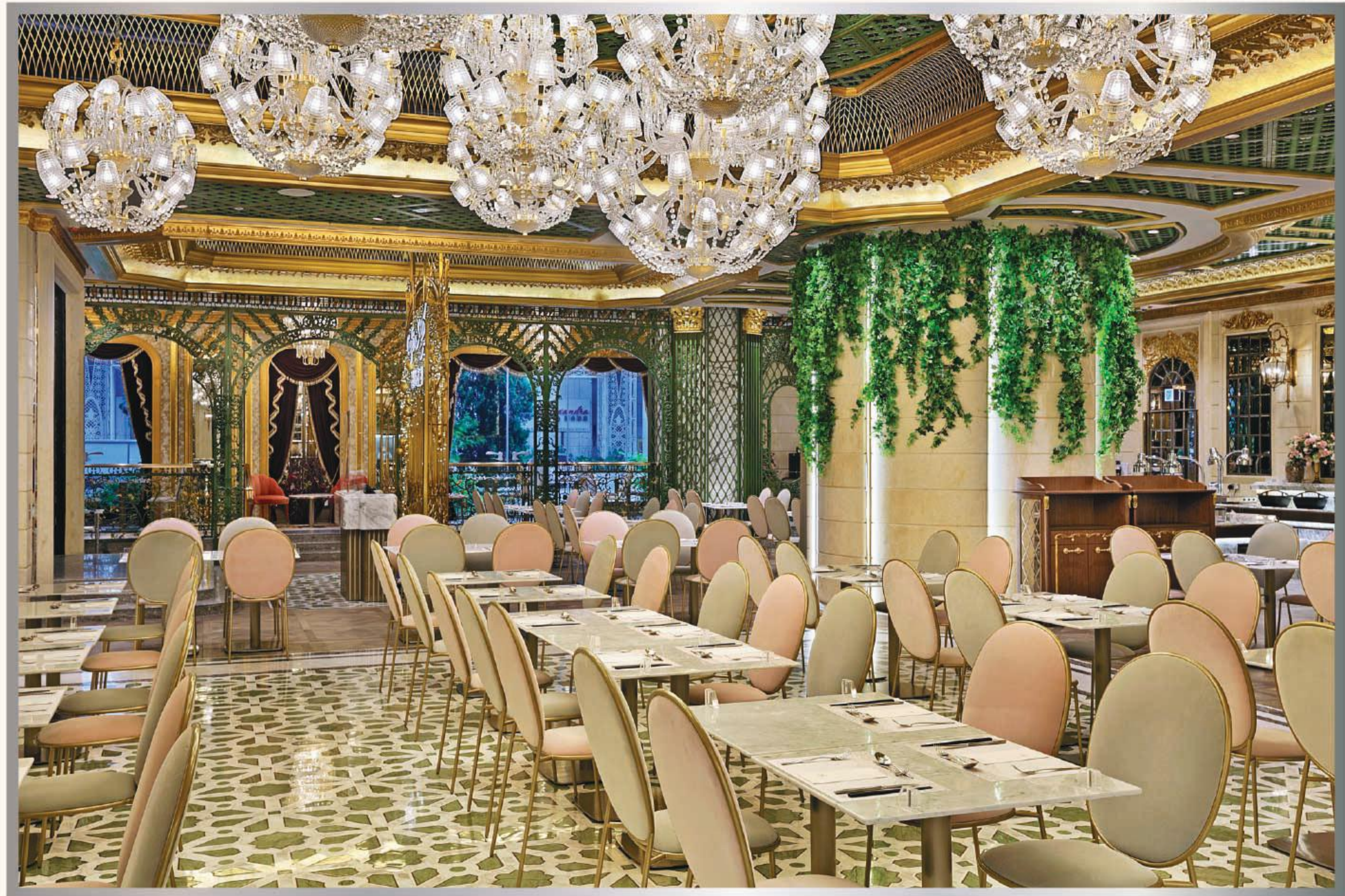
歷山餐廳



DINING

CAFÉ A

Be invited by a cosy ambiance featuring designer-led décor furnishings at the Café A. Restaurant is located on the Lobby Floor with lavish design. An extensive array of all day International a-la-carte, lunch set, afternoon tea set, semi-buffet and full buffet.



ALICE'S CORNER

Alice's Corner is the perfect spot for mouth-watering cakes, scrumptious sandwiches and a cup of your favourite tea or coffee to take away.





MEETING & EVENTS

Located on the Lobby Floor, the stunning Grand Ballroom is perfect for medium to large-scale conferences, events, cocktail functions and meetings. Measuring an expansive 935 sq. m. (9,990 sq. ft.) with 4 m. (13 ft.) ceiling height. Configurable into 3 separate venues for more intimate gatherings.

Features a spacious pre-function area measuring 275 sq. m. (2,940 sq. ft.) that extends towards the Grand Ballroom, an ideal venue for pre-dinner drinks and socializing.



MEETING ROOM - BUSINESS & SPECIAL OCCASIONS

Occupies up to 60 sq. m. (650 sq. ft.) and up to 2.3 m. (7.6 ft.) ceiling, adaptable to suit your business and occasion needs.



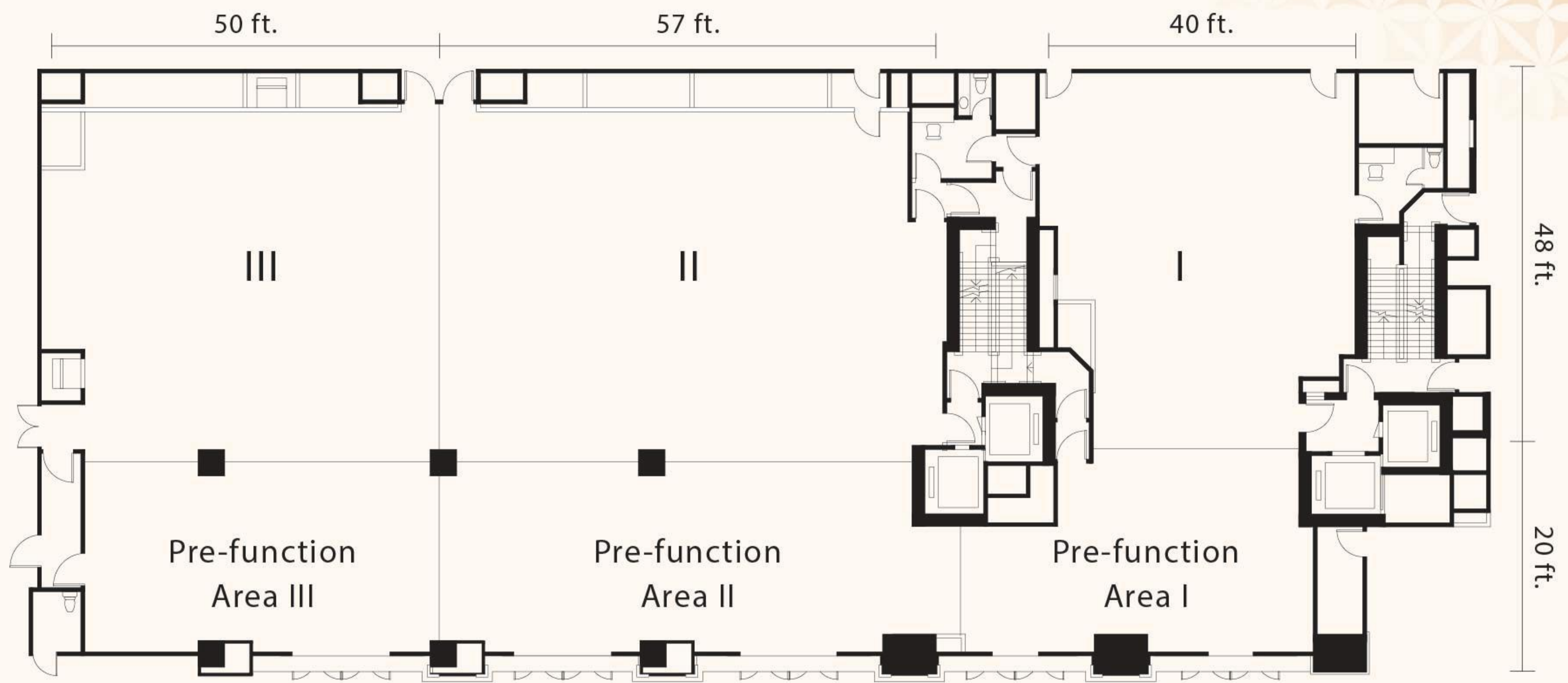
GRAND BALLROOM - WEDDING

An extravagant Grand Ballroom adorned with impressive crystal chandeliers, engraved golden doors and majestic décor.

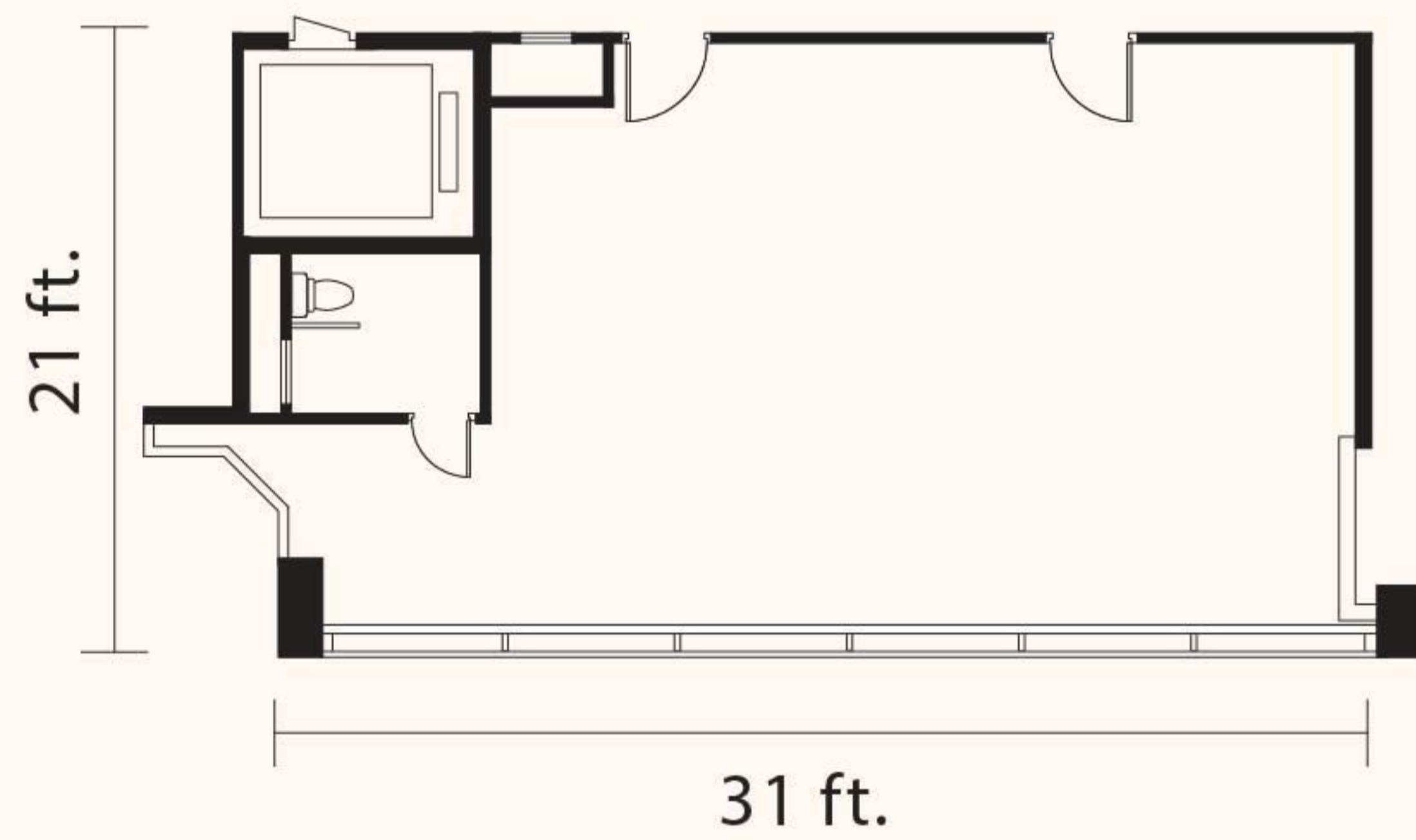


FLOOR PLAN AND CAPACITY

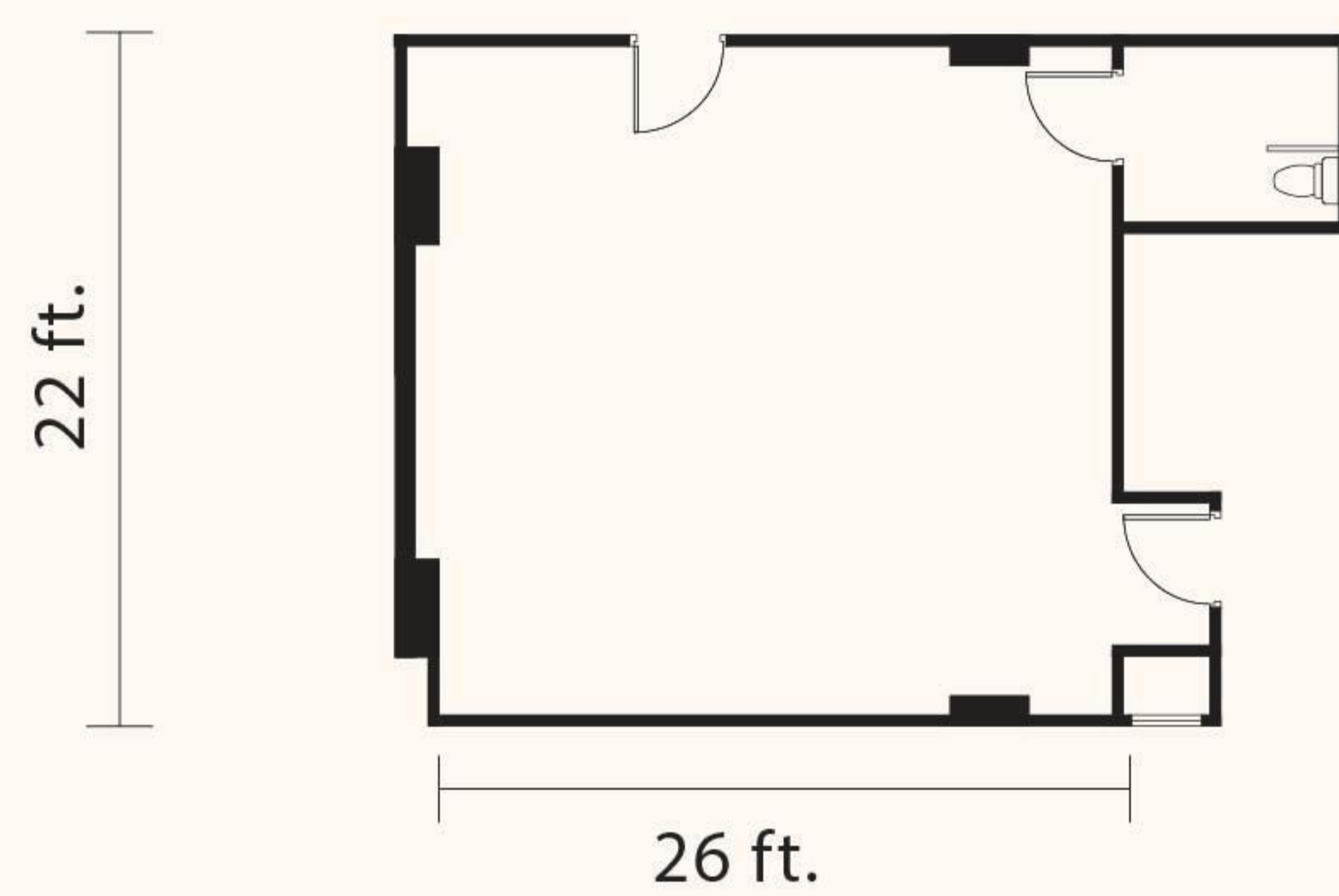
Grand Ballroom I - III



Meeting Room I / Salon



Meeting Room III



Function Space	Area		Height		Cocktail	Banquet	Classroom	Theatre	U-Shape
	m ²	ft ²	m	ft	pax	table	pax	pax	pax
Grand Ballroom I	180	1,920	4	13	120	8	72	140	46
Grand Ballroom II	255	2,730	4	13	180	13	120	220	52
Grand Ballroom III	225	2,400	4	13	160	11	96	200	46
Grand Ballroom II - III	480	5,130	4	13	340	24	216	420	72
Grand Ballroom I & Pre-function Area I	255	2,720	4	13	180	12	102	200	58
Grand Ballroom II & Pre-function Area II	362	3,870	4	13	250	18	180	320	52
Grand Ballroom III & Pre-function Area III	318	3,400	4	13	220	15	138	280	46
Grand Ballroom II - III & Pre-function Area II - III	680	7,270	4	13	470	33	318	600	72
Grand Ballroom I - III & Pre-function Area I - III	935	9,990	4	13	650	45	420	800	-
Meeting Room I / Salon	60	650	2.1	7	40	3	30	60	24
Meeting Room III	53	570	2.3	7.6	35	2	25	50	19

HOTEL *Alexandra*

32 City Garden Road, North Point, Hong Kong
(MTR Fortress Hill Station, Exit B)

Tel: (852) 3893 2888 | Email: enquiry@hotelalexandrahk.com

www.hotelalexandrahk.com