

# AVON

CAMPAIGN 24

Special  
offer!  
details  
inside

gifts that  
**DAZZLE**

**NEW! LIMITED EDITION**



**Glamorous Pearly Gift Set\***

Three-piece set. Glass pearlesque beads with dazzling silvertone-plated fireballs and clear glass stone accents. 16½" L with 3½" extender. Pierced drops, 1" L. Bracelet: one size fits most.

**525-290**

**\$39.99 if purchased separately**

**THIS BROCHURE ONLY.  
LIMITED QUANTITIES.**

\*Glamorous Pearly Gift Set purchase does not qualify toward this or any other offer and is available this brochure only.

Enjoy special prices and offers with an Avon account or Representative.



it's a  
**PEARLY PARTY**

GLAMOROUS PEARLY GIFT SET\*  
**ONLY \$19.99** WITH ANY  
\$15 HOLIDAY PURCHASE  
FROM PAGES 4-53.

*necklace,  
earrings and  
bracelet set*

NEW! LIMITED EDITION

# holiday GLAMOUR

## Violet Jewel-Tone Collection

Amethyst-colored  
and clear stones  
set in silvertone.

### Necklace and Earrings Set

16 1/2" L with  
3 1/2" extender.  
Pierced drops, 3/4" L.

522-248

reg. \$24.99

**\$19.99 the set**

### Tennis Bracelet

7 1/2" L with  
1" extender.

522-271

reg. \$16.99

**\$12.99**

### Hoop Earrings

1" diam. Pierced.

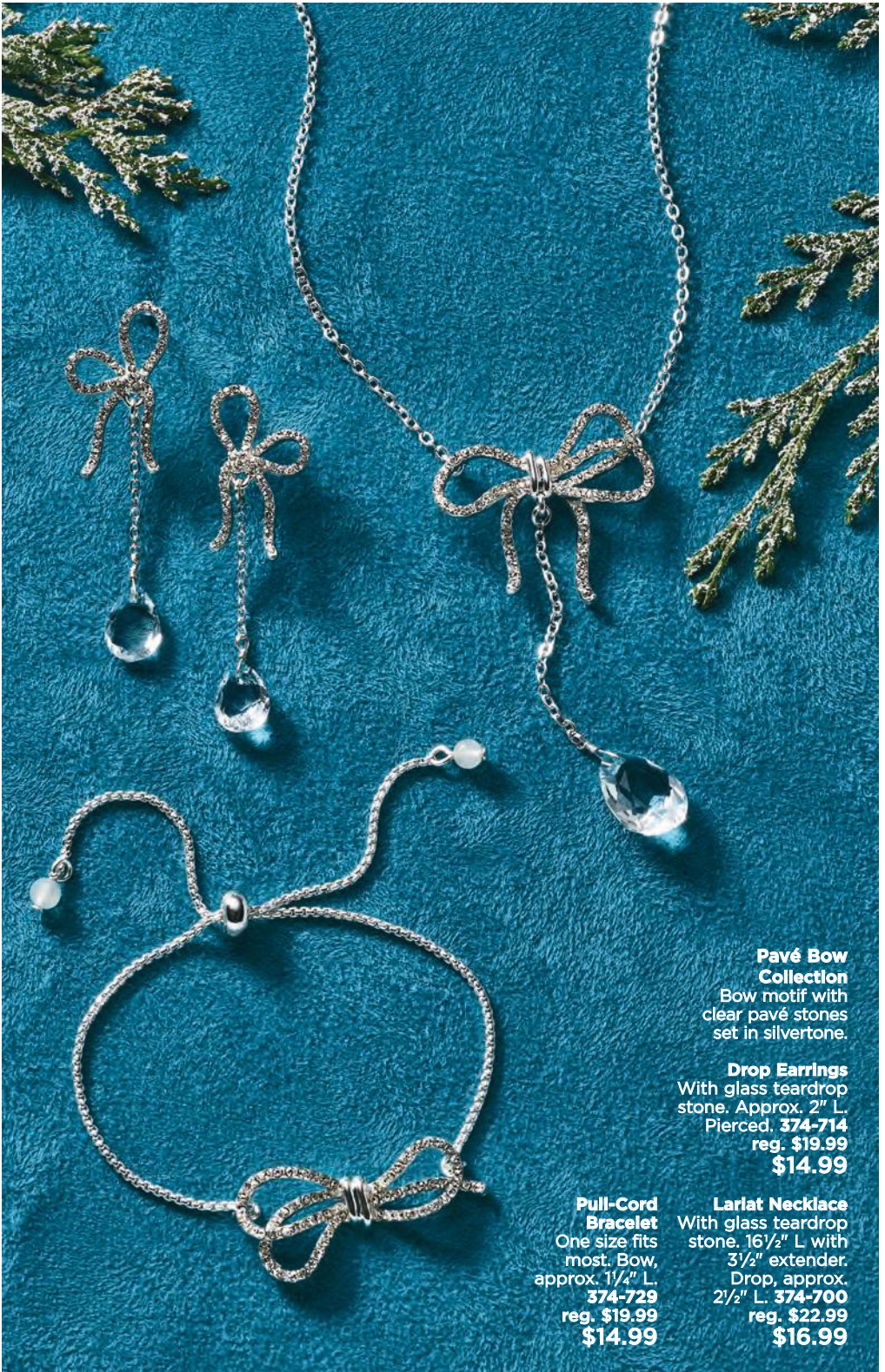
522-362

reg. \$12.99

**\$9.99**

*necklace and  
earrings set*





**Pavé Bow  
Collection**

Bow motif with  
clear pavé stones  
set in silvertone.

**Drop Earrings**

With glass teardrop  
stone. Approx. 2" L.  
Pierced. **374-714**  
reg. \$19.99  
**\$14.99**

**Pull-Cord  
Bracelet**

One size fits  
most. Bow,  
approx. 1 1/4" L.  
**374-729**  
reg. \$19.99  
**\$14.99**

**Lariat Necklace**

With glass teardrop  
stone. 16 1/2" L with  
3 1/2" extender.  
Drop, approx.  
2 1/2" L. **374-700**  
reg. \$22.99  
**\$16.99**

*necklace,  
earrings and  
bracelet set*



**Exquisite Look of Emerald  
3-Piece Set**

Emerald-like glass stones set in the look of rhodium-plated metal. 16 1/2" L with 3 1/2" extender. Pierced drops, 1 1/4" L. Bracelet: one size fits most. **522-453**  
reg. \$24.99

**\$19.99 the set**



**Faux-Gemstone  
9-Piece Multi-Pack  
Collection**

Nine-pair earring pack with multicolored glass stones set in silvertone. Pierced studs, approx. 1/2". **522-381**  
reg. \$22.99

**\$16.99 the pack**

*9-pair  
earring  
pack*

# evergreen SPLENDOR

NEW! LIMITED EDITION

## **Green Beaded Collection**

Green faceted glass beads with hematite-colored glass beads and accents set in hematite-plated metal.

### **Layered Necklace**

Four-row necklace.  
16½" L with  
3½" extender.

**522-472**

reg. \$24.99

**\$19.99**

### **3-Row Stretch Bracelet Set**

Set of 3.

One size  
fits most.

**522-597**

reg. \$16.99

**\$12.99**

**the set**

### **Earrings**

Pierced drops,  
2½" L.

**522-563**

reg. \$12.99

**\$9.99**

*set of  
3 bracelets*



# set to FÊTE

## **Festive Ornament Collection**

Ornaments: green and red enamel with green and red stone accents; plus ivory faux pearls, goldtone bells and red beads.

## **Necklace**

16½" L with 3½" extender. Charms, ¾"-1" L. **221-400** reg. \$24.99 **\$19.99**

## **Drop Earrings**

2¼" L. Pierced. **221-510** reg. \$16.99 **\$12.99**

## **Stretch Bracelet**

One size fits most. Charms, approx. ¾" L. **221-620** reg. \$19.99 **\$14.99**

## **Pin**

Green and red enamel with green, red and clear stone accents. 2" L. **221-668** reg. \$19.99 **\$14.99**





**NEW! LIMITED EDITION**

**Winter Garden  
Collection**

Multicolor glass stones  
set in goldtone.

**Necklace**

14½" L with  
3½" extender.

**266-119**

reg. \$84.99

**\$64.99**

**Statement Earrings**

2" L. Pierced.

**266-229**

reg. \$32.99

**\$24.99**

**Stretch  
Bracelet**

One size  
fits most.

**266-123**

reg. \$44.99

**\$34.99**

**Statement Ring**

Sizes:

6 **266-233**

8 **266-252**

10 **266-271**

reg. \$19.99

**\$14.99**

**Metal Strap  
Watch**

Bracelet watch  
set in rose  
goldtone.

8" L with 26mm  
diam. case.

**266-305**

reg. \$64.99

**\$49.99**



NEW! LIMITED EDITION



# a touch of **ELEGANCE**

**Midnight Shimmer  
Collection**

Dark blue glass beads.

**Lariat Necklace**

With glass seed beads.

25½" L with

3½" extender.

Y drop, 5" L.

**523-149**

reg. \$32.99

**\$24.99**

**Coll Bracelet**

With hematite glass beads.

One size fits most.

**522-601**

reg. \$19.99

**\$14.99**

**Hoop Earrings**

1½" diam. Pierced.

**523-479**

reg. \$12.99

**\$9.99**



*necklace and  
earrings set*

**Mystic Lace Collection**  
Glass stones with the look of mystic  
topaz set in hematite-plated metal.

**Stretch Bracelet**  
One size fits most.  
**375-543**  
reg. \$19.99  
**\$14.99**

**Y Necklace and  
Earrings Set**  
20" L with 3/2"  
extender. Drop, 2" L.  
Pierced studs, 3/4" L.  
**375-539**  
reg. \$22.99  
**\$16.99 the set**

NEW! LIMITED EDITION

# 12 nights of SPARKLE



pack of 12  
earrings,  
necklaces and  
bracelets



## Sparkle and Shine Mega Set

Includes eight pairs of pierced studs, hoops or drops (range from 1/4" to 1/2" diam.; drops, 1" L); two necklaces (with 3 1/2" extenders) and two bracelets (one size fits most). With a mix of colored stones, clear stone accents or faux pearls set in silvertone or goldtone. **264-723 reg. \$52.99**

**\$39.99**  
pack of 12



### Everything Merry

#### 12-Piece Earrings Pack

Mix of colored studs and drops set in silvertone or goldtone. Range from 1/4" to 1/2" L. Pierced.

258-038 reg. \$24.99

**\$19.99 the pack**



pack of 12 earrings

Wreath (Green)/  
Goldtone  
219-858



Reindeer (Red)/  
Goldtone  
219-915



Angel (Green/Red)/  
Silvertone  
219-972

### Happy Holidays Collection

With colored enamel and clear pavé or colored stone accents.

Wreath  
(Green Beads)/  
Goldtone  
221-122



Angel  
(Red Beads)/  
Silvertone  
221-380



### Drop Earrings

1" L. Pierced.  
reg. \$12.99

**\$9.99 each pair**

### Stretch Bracelet

With the look of Murano glass beads and metal-tone rondelles. One size fits most. Charm, approx. 3/4" L.  
reg. \$16.99

**\$12.99 each**



Reindeer  
(Ivory Beads)/  
Goldtone  
221-141

NEW! LIMITED EDITION



Heart/  
Goldtone  
524-126

Star/  
Sivertone  
524-460

Heart/  
Goldtone  
524-437

Cross/  
Sivertone  
524-441

Oval (Star)/  
Sivertone  
524-217

Round (Cross)/  
Sivertone  
524-260

**Shaky Pendant Necklace**  
Pendant with colored stones and metal-plated accents. 16½" L with 3½" extender. Pendant, 1" L. reg. \$16.99  
**\$12.99 each**

**Shaky Motif Pull-Cord Bracelet**  
With colored beads. One size fits most. Charms, ¼" to ½" L. reg. \$16.99  
**\$12.99 each**



Amethyst/  
Sivertone  
523-866

Sodalite/  
Goldtone  
523-961

Tiger's Eye/  
Sivertone  
524-111

Tiger's Eye/  
Sivertone  
524-001

Sodalite/  
Goldtone  
524-069

Amethyst/  
Sivertone  
524-016

**Precious Energy  
Collection**  
With semi-precious  
stones.

**Hoop Earrings**  
Approx. 1½" diam.  
Pierced.  
reg. \$12.99  
**\$9.99 each pair**

**Stretch Ring**  
One size fits most.  
Stone, approx. ½" W.  
reg. \$12.99  
**\$9.99 each**

# show your SPIRIT

**Shimmer  
Hoop Earrings**  
Accented with  
silver stones.  
1½" diam.  
Pierced.  
Red 375-213  
Black 375-194  
Clear 375-209  
reg. \$16.99  
**\$12.99  
each pair**

**NEW! LIMITED EDITION**



**Filigree Initial Necklace**

Domed filigree initial set in silvertone.

Necklace, 16 1/2" L with 3 1/2" extender.

Pendant, 1" L.

reg. \$12.99

**\$9.99 each**



A

374-810



B

375-046



C

375-050



D

375-065



E

375-070



G

375-084



J

375-099



K

375-103



L

375-118



M

375-122



N

375-137



P

375-141



R

375-156



S

375-160



T

375-175



V

375-180



# merry MOMENTS

## Scattered Rhinestone Watch

Leatherlike  
strap, 9" L.  
Silvertone case  
with rhinestone-  
accented dial,  
35mm diam.

Blue 375-471

Red 375-486

Black 375-490

reg. \$53.99

**\$42.99**

each



*necklace,  
earrings and  
ring set*

## Preclous Poinsettia 3-Piece Set

Goldtone  
with green,  
red and clear  
stone accents.  
16½" L with  
3½" extender.  
Pendant,  
approx. 1" L.  
Pierced studs,  
approx. ½" L.  
Ring, approx.  
½" W.

Sizes:

6 375-505

8 375-524

10 375-510

reg. \$22.99

**\$16.99**

3-piece set





**Sterling Silver  
Half Eternity  
Wedding Band  
With CZs. 1/8" W.**

Sizes:

5 375-562 8 375-596

6 375-577 9 375-600

7 375-581 10 375-615

reg. \$49.99

**\$39.99**

**Sterling Silver  
Trinity  
Engagement Ring  
1/4" W. CZ stone,  
approx. 1.25-carat  
weight equivalent.**

Sizes:

5 375-620 8 375-668

6 375-634 9 375-672

7 375-649 10 375-687

reg. \$58.99

**\$44.99**



**Stainless Steel  
Footprints In the Sand Necklace**

Stainless steel with goldtone accents.  
Three-layer functional locket with  
inscription. 17" L with 1" extender.  
Pendant, 1" L. **375-558**

reg. \$49.99

**\$39.99**

**STERLING SILVER**

**Sterling Silver  
CZ Cross Necklace**

Sterling silver with  
CZ pavé accents.  
17" L with 1" extender.  
Pendant, 1" L.

**524-805**

reg. \$69.99

**\$54.99**

**Sterling Silver  
Tree of Life Necklace**

Sterling silver with  
genuine amethyst and  
clear CZ accents.  
17" L with 1" extender.  
Pendant, 3/4" L.

**524-810**

reg. \$69.99

**\$54.99**

NEW! LIMITED EDITION

# time to TREASURE

**Women's Crystal Watch**

Metal bracelet watch, 8" L.  
Jet dial with bezel crystal  
stones and glass crystal  
accents, 32mm diam. case.

**524-480**

reg. \$64.99

**\$49.99**



NEW! LIMITED EDITION

RSVP  
party!



◆ **Velvet  
Long-Sleeve  
Dress**

Black long-sleeve knee-length dress with scoop neck, smocked waist and zipper closure on back. Polyester/spandex. Center back length: 38" on M; 40" on 1X. Machine wash, dry flat. Imported

XS(0-2) **369-230**

S(4-6) **369-279**

M(8-10) **369-450**

L(12-14) **369-465**

XL(16) **369-484**

1X(18W-20W) **369-537**

2X(22W-24W) **369-556**

3X(26W-28W) **369-594**

reg. **\$66.99**

**\$52.99**

Model is wearing Green Beaded Layered Necklace, sold on page 7.  
Size chart on page 23.



Model is wearing  
Shimmer Hoop  
Earrings, sold on  
page 15, and Slim  
Faux-Suede Pant,  
sold on page 22.



❖ **Crushed Velvet Pintuck Tunic**

Grey long-sleeve V-neck tunic with button-front placket and pintuck detail. Polyester/spandex. Center back length: 29" on M; 30" on 1X. Machine wash, line dry. Imported.

XS(0-2) <b>370-298</b>	XL(16) <b>370-499</b>
S(4-6) <b>370-302</b>	1X(18W-20W) <b>370-522</b>
M(8-10) <b>370-389</b>	2X(22W-24W) <b>370-541</b>
L(12-14) <b>370-465</b>	3X(26W-28W) <b>370-613</b>

reg. \$53.99  
**\$42.99**

❖ **Faux-Leather Blazer**

Black blazer with peak lapel and one button closure on front, long sleeves with button detail, slit pockets and back vent. Lined. Polyester/spandex with polyurethane coating. Polyester lining. Center back length: 28" on all sizes. Dry clean only. Imported.

XS(0-2) <b>445-960</b>	XL(16) <b>448-477</b>
S(4-6) <b>448-386</b>	1X(18W-20W) <b>448-921</b>
M(8-10) <b>448-405</b>	2X(22W-24W) <b>449-000</b>
L(12-14) <b>448-462</b>	3X(26W-28W) <b>449-014</b>

reg. \$74.99  
**\$59.99**

Pink top, jeans and earrings are not available.

# wrapped in **HOLIDAY STYLE**

## **A. ♦ Faux-Fur Trim Cape**

Plaid cape with fringe and faux-fur collar. Hook-and-eye closure on front. Body and collar, 100% polyester. Dry clean only. Missy: 56" L x 53" W. Plus: 61" L x 58" W. Imported.

Missy **369-924**

Plus **369-981**

reg. **\$64.99**

**\$49.99**

## **B. ♦ Slim Faux-Suede Pant**

Black slim-fitting faux-suede pants with elastic waist. Polyester/spandex. Inseam: 28 $\frac{1}{2}$ " on all sizes. Hand wash, line dry. Imported.

XS(0-2) **450-048**

S(4-6) **450-330**

M(8-10) **451-360**

L(12-14) **451-446**

XL(16) **451-450**

1X(18W-20W) **451-685**

2X(22W-24W) **451-833**

3X(26W-28W) **451-852**

reg. **\$49.99**

**\$39.99**

Model is wearing Sequin Ballet Flat, sold on page 23.



A

B

E

**NEW! LIMITED EDITION**

Model is wearing Sunburst Jewelry Collection, sold on Avon.com.

**C. ❖ Lace-Sleeve Top**

Red long-sleeve top with lace detail, round neck and cuffs. Body: polyester/spandex. Lace: polyester. Center back length: 24½" on M; 26" on 1X. Machine wash, line dry. Imported.

XS(0-2) **369-996**  
 S(4-6) **370-044**  
 M(8-10) **370-082**  
 L(12-14) **370-188**  
 XL(16) **370-211**  
 1X(18W-20W) **370-230**  
 2X(22W-24W) **370-245**  
 3X(26W-28W) **370-264**  
**reg. \$49.99**  
**\$39.99**

**D. ❖ Long-Sleeve Sequin Pocket Tee**

Black long-sleeve soft V-neck tee with sequin detail on pocket. Rayon/spandex/sequins. Center back length: 22½" on M; 25" on 1X. Machine wash, dry flat. Imported.

XS(0-2) **369-609**  
 S(4-6) **369-670**  
 M(8-10) **369-719**  
 L(12-14) **369-742**  
 XL(16) **369-776**  
 1X(18W-20W) **369-780**  
 2X(22W-24W) **369-848**  
 3X(26W-28W) **369-871**  
**reg. \$32.99**  
**\$24.99**



**E. ❖ Sequin Ballet Flat**

Silver sequin ballet flat with contrasting black toe cap and wavy cushion insole. Man-made materials. Half sizes, order size up. Imported.

6M **369-030** 9M **369-082**  
 7M **369-044** 10M **369-097**  
 8M **369-078** 11M **369-169**  
**reg. \$37.99**  
**\$28.99**



APPAREL SIZE CHART			
SIZE	BUST	WAIST	HIP
XS 0/2	30.5"-32"	23.5"-25"	32.5"-34"
S 4/6	33.5"-35"	26.5"-28"	35.5"-37"
M 8/10	36.5"-38"	29.5"-31"	38.5"-40"
L 12/14	39.5"-41"	32.5"-34"	41.5"-43"
XL 16	43"-44"	35.5"-36.5"	44.5"-45.5"
1X 18W/20W	46.5"-48.5"	39"-41"	48"-50"
2X 22W/24W	50.5"-52.5"	43"-45"	52"-54"
3X 26W/28W	54.5"-56.5"	47"-49"	56"-58"

Enjoy special prices and offers with an Avon account or Representative.



3-piece set includes headband

Models are wearing 2-Pack Christmas Socks with Scrunchie, sold on page 25. Size chart on page 23.

❖ **Snowflake Sleepshirt**

Snowflake-print green Henley-style long-sleeve sleepshirt with front placket and buttons. Polyester/spandex. Center back length: 32" on M; 34" on 1X. Machine wash, line dry. Imported.

XS(0-2) <b>204-772</b>	XL(16) <b>205-908</b>
S(4-6) <b>205-180</b>	1X(18W-20W) <b>205-912</b>
M(8-10) <b>205-817</b>	2X(22W-24W) <b>205-927</b>
L(12-14) <b>205-893</b>	3X(26W-28W) <b>207-619</b>

reg. \$42.99  
**\$32.99**

❖ **Candy Cane Striped Pajama Set**

Red and white striped long-sleeve round-neck top. Matching pull-on bottom with elastic waistband and side pockets. Includes matching headband. Top and bottom: cotton. Neckline trim: cotton/spandex. Center back length for top: 25½" on M; 27" on 1X. Bottom inseam: 30" for all sizes. Machine wash and dry. Imported.

XS(0-2) <b>202-909</b>	L(12-14) <b>203-336</b>	2X(22W-24W) <b>203-393</b>
S(4-6) <b>203-135</b>	XL(16) <b>203-340</b>	3X(26W-28W) <b>204-768</b>
M(8-10) <b>203-321</b>	1X(18W-20W) <b>203-355</b>	

reg. \$56.99

**\$44.99 the set**



# O COZY night



3-piece  
set  
includes  
headband

NEW! LIMITED EDITION

#### ◆ Christmas Tree Pajama Set

Multicolor Christmas tree print, navy blue long-sleeve round-neck top with side slits. Matching pull-on jogger bottom with rib cuff, elastic waistband and side pockets. Includes matching headband. Top and bottom: 100% cotton. Neckline trim and bottom rib cuff: cotton/spandex. Top: center back length: 25½" on M; 27½" on 1X. Bottom inseam: 29½" on all sizes. Machine wash and dry. Imported.

XS(0-2) **230-855**

S(4-6) **232-399**

M(8-10) **232-403**

L(12-14) **232-676**

XL(16) **232-680**

1X(18W-20W) **246-569**

2X(22W-24W) **246-607**

3X(26W-28W) **246-611**

reg. **\$56.99**

**\$44.99 the set**



two pairs  
of socks  
+ hair  
scrunchie

#### ◆ 2-Pack Christmas Socks with Scrunchie

Red and green Santa and black and red reindeer socks. Comes with red scrunchie with jingle bells. Fits shoe sizes 6-10. Socks: polyester/spandex; scrunchie: 100% polyester. Machine wash and dry (socks only). Imported.

**194-177**

reg. **\$12.99**

**\$9.99 the set**

#### ◆ Whimsical Holiday Slipper

Red faux-sherpa upper with green embroidered Christmas tree and candy cane striped insole. Man-made materials. Imported.

S(5-6) **171-738**

M(7-8) **171-962**

L(9-10) **171-977**

XL(11-12) **171-981**

reg. **\$20.99**

**\$15.99**

Enjoy special prices  
and offers with  
an Avon account or  
Representative.

**White/Black**  
S(5-6) 169-473  
M(7-8) 169-860  
L(9-10) 169-894  
XL(11-12) 170-291

❖ **Plaid Button-Detail Slipper**  
Plaid upper with matching button detail, black faux-fur lining and trim. Man-made materials. Imported.  
reg. \$23.99  
**\$17.99 each pair**

**Green/Black**  
S(5-6) 168-022  
M(7-8) 168-037  
L(9-10) 168-151  
XL(11-12) 168-166

**Red/Black**  
S(5-6) 168-170  
M(7-8) 168-792  
L(9-10) 169-200  
XL(11-12) 169-435

Enjoy special prices and offers with an Avon account or Representative.

**PLAID**  
tidings!

**NEW! LIMITED EDITION**



**A. ❖ Foil-Printed Slipper Bootie**

Foil leopard-print upper with faux-fur lining, matching bow and pom-pom detail. Man-made materials. Imported.

reg. \$32.99

**\$24.99 each pair**

**Grey**

S(5-6) **246-755**

M(7-8) **248-447**

L(9-10) **248-557**

XL(11-12) **248-739**

**Tan**

S(5-6) **246-630**

M(7-8) **246-650**

L(9-10) **246-664**

XL(11-12) **246-736**

**B. ❖ Fair Isle Unisex Slipper**

Blue-and-white-knit Fair Isle slip-on slipper with grey faux-sherpa lining. Man-made materials. Imported.

S(5-6) **248-800**

M(7-8) **249-348**

L(9-10) **251-196**

reg. \$22.99

**\$16.99**

XL(11-12) **251-330**

XXL(13-14) **255-942**

**C. ❖ Classic Unisex Slipper**

His or hers slip-on slipper with faux-sherpa lining. Man-made materials. Imported.

reg. \$22.99

**\$16.99 each pair**

**Tan**

S(5-6) **004-848**

M(7-8) **004-829**

L(9-10) **004-647**

XL(11-12) **004-484**

XXL(13-14) **004-465**

**Black**

S(5-6) **004-226**

M(7-8) **004-264**

L(9-10) **004-374**

XL(11-12) **004-412**

XXL(13-14) **004-450**

**Grey**

S(5-6) **151-331**

M(7-8) **151-350**

L(9-10) **151-403**

XL(11-12) **151-480**

XXL(13-14) **151-547**

**UNISEX SIZE CHART**

	women	men
S	5-6	↘
M	7-8	5-6
L	9-10	7-8
XL	11-12	9-10
XXL	13-14	11-12



NEW! LIMITED EDITION

A woman with short blonde hair is sitting cross-legged on a white background. She is wearing a white ribbed sweater and matching white ribbed leggings. On her feet are purple fuzzy slippers with white stripes. She is holding a green gift box with a white ribbon bow on top of her head with both hands. She has a wide, joyful smile.

wishing you the  
**WARM + FUZZIES**

◆ **Rhinestone Faux-Fur Slipper**  
Faux-fur slippers with rhinestone  
detail. Man-made materials. Imported.  
reg. \$20.99  
**\$15.99 each pair**

**Purple**

S(5-6) **376-630** L(9-10) **376-918**  
M(7-8) **376-812** XL(11-12) **376-980**

**Pink**

S(5-6) **377-000** L(9-10) **377-053**  
M(7-8) **377-015** XL(11-12) **377-110**

**Blue**

S(5-6) **375-911** L(9-10) **375-945**  
M(7-8) **375-926** XL(11-12) **375-950**



# SANTA'S TOY SHOP: open for business



#### ◆ Toy Shop Tabletop Light-Up

Santa and the elves are busy making toys for all the good boys and girls! Center tree spins. Shop lights up. Plays eight holiday tunes (see page 31). Switch for lights, sound and movement, lights with movement or off. Takes three AA batteries (not included) with 4.5V 5000mA DC jack (adapter not included). 9 1/4" L x 5" W x 9 1/2" H. Polyresin, plastic. Imported. 283-937  
reg. \$64.99

**\$49.99**



#### DON'T FORGET THE BATTERIES!

#### ◆ Cell Strong Batteries

Alkaline. Not rechargeable.  
**36 Pack AA Batteries 116-023**  
**36 Pack AAA Batteries 116-980**  
reg. \$29.99  
**\$22.99 each pack of 36**



**PLAYS EIGHT HOLIDAY TUNES:**  
*We Wish You a Merry Christmas*  
*Hark! The Herald Angels Sing*  
*Jingle Bells*  
*Silent Night*  
*Deck the Halls*  
*Joy to the World*  
*The First Noel*  
*O Christmas Tree*



❖ **Santa in Stocking Tabletop Light-Up**

Santa's door opens and our jolly friend pops out, ready to go! Stocking house, tree and street lamps light up. Switch for lights, sound and movement, lights with movement or off. Takes three AA batteries (not included) with 4.5V 5000mA DC jack (adapter not included). 9 1/4" L x 5" W x 9 1/2" H. Polyresin, plastic. Imported.

**539-125**  
 reg. \$64.99  
**\$49.99**



❖ **Holiday Hills Ski Land  
Light-Up**

Christmas at the ski resort! Skiers shush down and head back up for more thrills. Lights up and plays eight holiday tunes (see page 31). Switch for lights, sound and movement, lights with movement or off. Takes three AA batteries (not included) with 4.5V 5000mA DC jack (adapter not included). 7½" L x 7¼" W x 9¼" H. Polyresin, plastic. Imported. **278-559**  
reg. \$64.99  
**\$49.99**



❖ **Santa's Midnight Sleigh  
Ride Light-Up**

Santa's ready to ride! The jolly ol' elf and his tiny reindeer dash up and down over our bottle brush forest. Trees and sleigh light up. Plays eight holiday tunes (see page 31). Switch for lights, sound and movement, lights with movement or off. Takes three AA batteries (not included) with 4.5V 5000mA DC jack (adapter not included). 8¾" L x 5" W x 12½" H. Polyresin, plastic. Imported. **278-525**  
reg. \$64.99  
**\$49.99**







**NEW!  
LIMITED EDITION**

❖ **Holiday Church  
Tabletop Light-Up**

O come all ye faithful! Church and town square light up. Center Christmas tree spins. Plays eight holiday tunes (see page 31). Switch for lights, sound and movement, lights with movement or off. Takes three AA batteries (not included) with 4.5V 5000mA DC jack (adapter not included). 9<sup>1</sup>/<sub>4</sub>" L x 5" W x 9<sup>1</sup>/<sub>2</sub>" H. Polyresin, plastic. Imported.

**281-767**

reg. \$64.99

**\$49.99**



❖ **Holiday Hills Swing  
Light-Up**

Swing into the holidays! Child swings back and forth as Santa looks on and skaters take a turn around the rink. Trees light up. Plays eight holiday tunes (see page 31). Switch for lights, sound and movement, lights with movement or off. Takes three AA batteries (not included). 7<sup>1</sup>/<sub>2</sub>" L x 7<sup>1</sup>/<sub>4</sub>" W x 9<sup>1</sup>/<sub>4</sub>" H. Polyresin, plastic. Imported.

**281-733**

reg. \$69.99

**\$54.99**





**Santa**  
013-519

**Snowman**  
012-728

❖ **Sledding Christmas Shelf Sitter Light-Up**

Santa and his snowman buddy are ready for holiday fun! Cheeks light up on each character. On/off switch.

Takes two AA batteries (not included). Each, 10" L x 4 1/2" W x 11 1/2" H.

Polyester, metal. Imported.  
reg. \$34.99

**\$26.99 each**



❖ **Over the Door Santa Greeter Light-Up**

Motion-sensor Santa greets guests with a twinkle in his cheeks. Hangs over the door. Cheeks light up. On/off switch. Takes three AA batteries (not included). 24" L x 20" W x 2" H.

Polyester. Imported.  
282-209

reg. \$44.99

**\$34.99**



*Greets guests and says:  
"Merry Christmas to all,  
and to all a good night!"*



## NEW! LIMITED EDITION

### A. ♦ Countdown to Christmas Plush

Our snowman is counting it down! Inflatable interior and base with snowman fabric overlay, detachable scarf and felt candy cane. Move the candy cane each day in December as it gets closer to Christmas. Some assembly required. Foot pump included. 15" L x 11" W x 28" H. Polyester, plastic. Imported.

**014-606**  
reg. \$49.99  
**\$29.99**

A

*Stands 28" tall*



B

*Stands 25" tall*



### B. ♦ Sledding Christmas Greeter Light-Up

Let's go sledding! Sled lights up. Santa's hands can be secured to sled with hook and loop. On/off switch. Takes two AA batteries (not included). Sled: 7 1/2" L x 2 1/2" W x 19 1/2" H. Santa: 10" L x 4" W x 25" H. Wood, polyester. Imported.

**014-352**  
reg. \$58.99  
**\$49.99**



◆ **Woodland Winter Village Light-Up**

Sculpted woodland scene with back-lit filigree design creates a cozy silhouette of our fave festive friends. On/off switch. Takes two AAA batteries (not included). 13¼" L x 2" W x 8¾" H. MDF wood. Imported. **283-980**  
reg. \$49.99  
**\$39.99**



◆ **Christmas Tree Village Set**

Let's head to the village tree stand 'cause it's time to pick out the Christmas tree! Lights up. Takes three AA batteries. On/off switch. Tree stand: 5¾" L x 4" W x 7" H; pickup truck: 5¼" L x 2½" W x 2¾" H; side trees: 3" L x 2" W x 2" H. Polyresin, plastic. Imported. **282-854**  
reg. \$58.99  
**\$49.99 3-piece set**

◆ **Bright Moments Bottle Brush Tree Set Light-Up**

Quintessential bottle brush Christmas trees with holiday lights. Each takes three AA batteries (not included). On/off switch. Each, 3" diam. Small: 6" H; medium: 7<sup>3</sup>/<sub>4</sub>" H; large: 10<sup>1</sup>/<sub>4</sub>" H. Plastic, metal. Imported.

**238-291**

reg. \$39.99

**\$29.99 set of 3**



◆ **Bright Moments Inspirational Pewter Ornament**

Embossed with the 2023 Avon Fine Collectibles stamp on back. Includes velvet keepsake pouch and easy-to-hang tassel. 2<sup>1</sup>/<sub>8</sub>" W x 2<sup>3</sup>/<sub>4</sub>" L. Pewter, polyester. Imported. **234-573**

reg. \$20.99

**\$15.99**



◆ **Bright Moments Hurricane Glass Set Light-Up**

Houses and snowflakes light up.

Each takes three AA batteries (not included). On/off switch. Each, 3<sup>1</sup>/<sub>2</sub>" diam. Small: 4" H; large 8" H. Glass.

Imported. **234-611**

reg. \$32.99

**\$24.99 set of 2**



◆ **Bright Moments Glass Tree Light-Up**

Santa is on the scene! Lights up and plays eight holiday tunes (see page 31). Takes three AA batteries (not included). Switch for lights only, lights and sound or off.

Glass, plastic, resin.

4" diam. x 10<sup>1</sup>/<sub>2</sub>" H.

Imported.

**235-584**

reg. \$39.99

**\$29.99**



all is CALM...



◆ **Season's Blessings Cross Light-Up**

Back-lit nativity scene with an inscription from Luke 1:14: "And you will have joy and gladness; and many will rejoice at his birth." Can be hung up or placed on a flat surface. On/off switch. Takes two AAA batteries (not included). 10" L x 1 1/2" W x 13" H. MDF wood, plastic. Imported. **284-020**

reg. \$44.99  
**\$34.99**



◆ **Holy Family Ornament Light-Up**

Mary, Joseph and baby Jesus light up the Christmas tree. On/off switch. Takes three LR44 button cell batteries (included). 3 1/2" L x 3" W x 4 1/2" H. Porcelain. Imported. **284-034**

reg. \$16.99  
**\$12.99**



# all is BRIGHT



◆ **Peace on Earth Faux-Candle Light-Up**

Let there be peace on Earth! Flameless light flickers inside. On/off switch. Takes two AA batteries (not included). 4<sup>3</sup>/<sub>4</sub>" L x 4<sup>3</sup>/<sub>4</sub>" W x 6<sup>1</sup>/<sub>2</sub>" H. Porcelain, plastic. Imported. **284-049**

reg. \$32.99

**\$24.99**



◆ **Peace on Earth Angel Light-Up**

Hark! The herald angels sing! With a goldtone "Peace" charm, our angel shimmers with glowing stars on her gown. Flameless light flickers inside. On/off switch. Takes two LR44 button cell batteries (included). 5" L x 3<sup>1</sup>/<sub>4</sub>" W x 11" H. Porcelain, metal. Imported. **283-994**

reg. \$39.99

**\$30.99**



# holiday open house



## 7 Days of Avon Beauty

Celebrate the season with seven makeup and skin care must-haves! Each door opens to a beautiful surprise! Paperboard, 7 $\frac{1}{8}$ " W x 2" D x 12 $\frac{7}{8}$ " H.

163-069 reg. \$66

\$29.99

7-piece set

## Includes:

- Isa Knox LXNEW Ultimate Rejuvenating Day Cream Mini, .5 fl. oz.
- fmg LOVE at 1st Lash Mini Mascara in Blackest Black, .13 fl. oz.
- fmg Glimmer Lip Plumper, .3 fl. oz.
- Isa Knox LXNEW Ultimate Rejuvenating Serum Mini, .23 fl. oz.
- fmg Glimmer Diamonds Eyeliner in Black Ice, .01 oz. net wt.
- fmg Glimmer Lip Glaze in Flash, .3 fl. oz.
- Farm Rx Super Greens Refreshing Gel Cleanser Mini, 1 fl. oz.



Beginning  
163-020



New Classic  
162-794

**NEW!  
LIMITED  
EDITION**

**fmg Eye Moment  
Palette**

Multi-finish  
eyeshadow palette  
to create your  
best holiday eyes!  
Includes 10  
sensational shades  
in satin, shimmer,  
glitter and matte  
finishes, mirror and  
brush applicator.  
Each, .03 oz. net wt.  
reg. \$35  
**\$22 each**

**fmg Glimmer  
Wish for a Kiss**

Thirty of our best-selling  
fmg Glimmer Satin Lipstick  
shades in take-to-every-  
party sample sizes housed  
in a cute keepsake metal  
tin. Comes in gift box.  
Each, .021 oz. net wt.

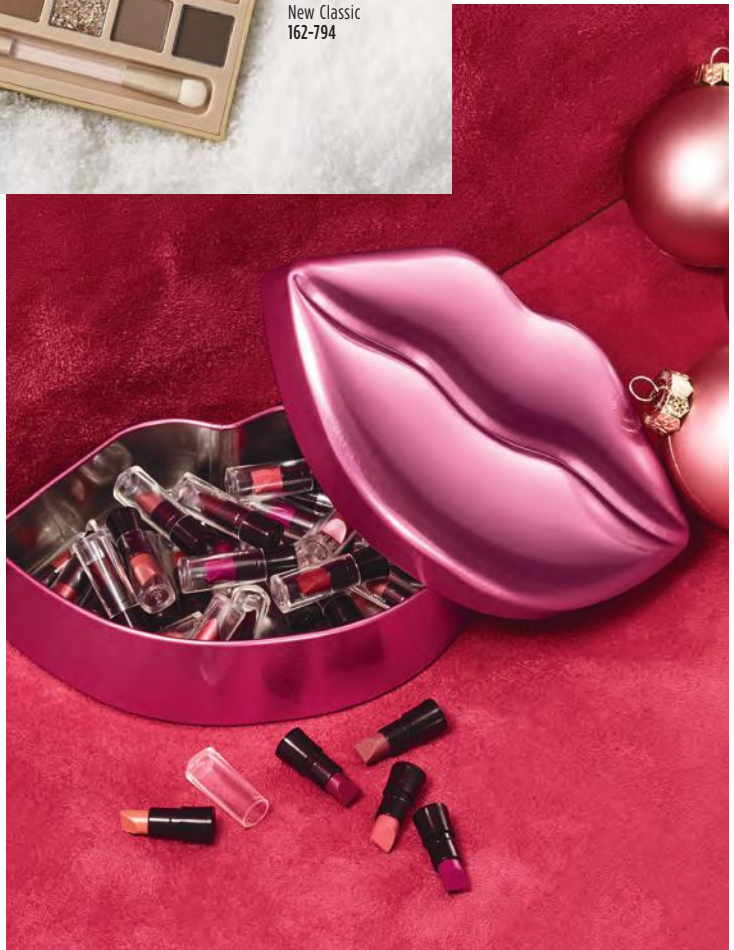
**Includes shades:**

Luna, Wild Rose, Rose  
Angel, Sierra Sunset, Poppy,  
Violet Night, Hibiscus,  
Firebolt, Thunderbird, Fog,  
Eclipse, Aster, Wild Cherry,  
Tulip, Constellation,  
Morning Glory, Plum  
Blossom, Desert Moon,  
Equinox and Twilight.

**164-031 reg. \$100**

**\$29.99**

**31-piece set**



Enjoy special prices and offers with  
an Avon account or Representative.

NEW! LIMITED EDITION

**fmg Glimmer Pout Perfect  
Mini Lipstick Gift Set**

Perfect your pout with a trio of cult-fave fmg Glimmer Satin mini lipsticks. Comes in gift box. Each, .04 oz. net wt.

Includes shades:

- Luna
- Plum Blossom
- **Holiday Set Exclusive!**  
French Rose

164-490 reg. \$36

**\$29.99**

3-piece set



# nifty +



**fmg Mini Makeup  
Essentials Kit**

Your must-have merry makeup essentials all ready to go for every holiday event.

Includes:

- **Holiday Set Exclusive!**  
fmg Glimmer Duo  
Eyeshadow Compact,  
.14 oz. total net wt.
- fmg LOVE at 1st Lash  
Mini Mascara in  
Blackest Black, .13 fl. oz.
- fmg Glimmer Mini  
Satin Lipstick in  
Wild Rose, .04 oz. net wt.
- **Be Blushed Cheek Color**  
in Blushing Nude,  
.14 oz. net wt.
- **Clear Green Pouch,**  
Zippered. 4¾" L x 4¾" H  
x 4" D. PVC. Imported.

163-460 reg. \$55

**\$40**

5-piece set

**fmg Expert Tips  
Nail Art Tool Kit**

Merry your mani and get nails in tip-top shape with this handy kit!

**Includes:**

- Foam nail buffer block, 7" L.
- Nail buffer, 7" L.
- Two nail files, each, 7" L.
- Cuticle pusher, 5" L, stainless steel.
- Dual-ended marbling and dotting tool, 4" L, metal alloy.
- Cuticle cutter, stainless steel.
- Nail clipper, 2½" L, stainless steel.
- Storage box, 7½" L x 3½" H, plastic.

**006-970 reg. \$30**

**\$16**

**9-piece set**



*After you prep,  
add some nail color,  
sold on page 92!*

# gifts

**VDL Expert Slim  
Glow Lip Balm  
Special Edition Set**

Sparkle through the holidays and beyond with supersoft lips and hands! Comes in gift box.

**Includes:**

- **VDL Expert Slim Glow Lip Balm** in Pink Sparkle, .08 oz. net wt.
- **VDL Lumilayer Perfumed Hand Cream** in rose and peony scent, 1.01 oz. net wt.

**168-018 reg. \$28.99**

**\$19.99**

**2-piece set**



Enjoy special prices and offers with an Avon account or Representative.

**Men's Fragrance Essentials Gift Set**

*fresh aromatic*

Elevate your fragrance experience  
with our best-selling classics!  
Comes in gift box.

Includes:

- **Black Suede Eau de Toilette**,  
Bergamot, soft leather and  
oakmoss. 3.4 fl. oz.
- **Wild Country Cologne**,  
Lavender, coriander seed  
and sandalwood. 3 fl. oz.
- **Wild Country Aftershave Splash**,  
4 fl. oz.

217-195 reg. \$57

**\$29.99**

**3-piece set**



**magnifiSCENTS!**



**Haiku Serenity Gift Set**

*fresh green floral*

Delight in the serenity of a beautiful Japanese garden, blooming with Japanese yuzu, delicate muguet and blonde woods. Comes in gift box.

Includes:

- Haiku Eau de Parfum, 1.7 fl. oz.
- Haiku Hair & Body Mist, 3.25 fl. oz.
- Haiku Intense Travel Spray, .3 fl. oz.

217-161 reg. \$57

**\$29.99**

**3-piece set**

Enjoy special prices and offers with an Avon account or Representative.

# ho, ho, HYDRATION!



## belif in wonder holiday set

Celebrate explosive hydration!  
One full-size fave plus two minis.  
Limited-edition kit includes:

- The True Cream Moisturizing Bomb, 1.68 fl. oz.
- Aqua Bomb Hydrating Body Moisturizer, 1.01 fl. oz.
- Moisturizing Eye Bomb, .16 fl. oz.

Comes in festive holiday gift box.

**208-562 reg. \$42**

**\$38**

**3-piece set**



**NEW!  
LIMITED  
EDITION**



**belif glow on the go holiday travel kit**

Five must-have mini sizes.

Limited-edition kit includes:

- The True Cream Moisturizing Bomb, .33 fl. oz.
- The True Cream Aqua Bomb, .33 fl. oz.
- Moisturizing Eye Bomb, .16 fl. oz.
- Aqua Bomb Hydrating Toner, .67 fl. oz.
- Aqua Bomb Jelly Cleanser, 1.01 fl. oz.

Comes in festive holiday gift box.

**210-736 reg. \$30**

**\$23**

**5-piece kit**

Enjoy special prices and offers with an Avon account or Representative.

# holiday BESTIES

## The Face Shop

### x earp earp Herb Day 365 Foaming Cleanser Trio Trial Kit

Mini daily cleansers  
infused with naturally  
derived herbal and fruit  
extracts. Each, 2 fl. oz.

Boxed set includes:

- **Lemon & Grapefruit**  
Freshen oily skin.
- **Acerola & Blueberry**  
See a clearer  
complexion.
- **Aloe & Green Tea**  
Hydrate dry skin.

904-947 reg. \$11

**\$8.40**

**3-piece kit**



## The Face Shop

### x earp earp Best Sellers Set

Three skin care beauties,  
all in one cute kit.

Boxed set includes:

- **The Therapy**  
**Vegan Blending Cream**  
Lower layer of emulsified  
cream with an upper layer  
of oil-gel cream. .33 fl. oz.
- **Rice Water Bright**  
**Foaming Cleanser**  
Gently moisturizing foam  
with rice extract. 1.01 fl. oz.
- **Real Nature**  
**Rice Face Mask**  
Brightening and softening  
sheet mask with rice  
extract. .7 oz. net wt.

918-060 reg. \$10

**\$8**

**3-piece kit**







**The Face Shop x earp earp  
Real Nature Mask Sheet Set**

With naturally derived ingredients.

10 single-use sheet masks.

Each, .7 oz. net wt. Boxed set includes:

- **Honey mask** Hydrates for an extra glow.
- **Aloe and Potato masks**  
Hydrate and soothe.
- **Lemon and Rice masks** Brighten.
- **Avocado and Green Tea masks** Hydrate.
- **Red Ginseng, Blueberry and Pomegranate masks** Help firm.

900-717 reg. \$11

**\$8.80**

**10 masks**

NEW! LIMITED EDITION



**Isa Knox LXNEW Ultimate Day and Night Gift Set**  
With peony extract, plus niacinamide and panthenol. See younger skin blossom. Full-size day and night creams. Comes in gift box.

**Includes:**

- **Rejuvenating Day Cream**, 1.7 fl. oz.
- **Rejuvenating Dual Night Cream** Volume Cream/Firming Cream. Each, .85 fl. oz.

**213-716**  
reg. \$100  
**\$39.99**  
2-piece set

## GIVE beautifully

**Farm Rx Skin De-Stressing Gift Set**  
Visibly improve wrinkles. Plus, massage with the relaxing wand to help ease facial tension. Comes in gift box.

**Includes:**

- **Farm Rx Bakuchiol Serum**, 1 fl. oz.
- **Farm Rx Bakuchiol Cream**, 3.04 fl. oz.
- **Holiday Set Exclusive! Acupressure Wand**  
Lightly massage T-shaped end of wand upward to enhance absorption of serum and cream.

**213-807**  
reg. \$106  
**\$35**  
3-piece set



# winter DELIGHTS

## Avon Senses Strawberry White Hot Chocolate Winter Bath Collection

An indulgent treat for your winter body care routine. Soften your skin all over while you enjoy the fresh and fruity scent of luscious strawberries with the silky sweetness of decadent white chocolate.



### Body Lotion

Smooths and softens with moisture-rich shea butter and vitamin E. 8 fl. oz.  
150-320 reg. \$17  
**\$10.99**

### Bubble Bath

Sweet and refreshing, delicious bubbles. 16.2 fl. oz.  
150-373 reg. \$11  
**\$7.99**

### Candle

One wick. Soy-wax blend. 3" diam. x 3 1/2" H. Burn time, 40 hours. 7 oz. net wt.  
150-392 reg. \$18  
**\$12.99**

### Hair & Body Mist

With aloe vera extract, leaves hair and skin feeling refreshed. 8 fl. oz.  
150-369 reg. \$18  
**\$10.99**

NEW! LIMITED EDITION

# YOUR GIFT is served



**Daily Moments  
Vegan Hand Cream  
Holiday Set**

Includes three  
of your favorites.

• **Midnight Street**

A sensual fragrance infused  
with luscious fruit notes.

• **Sunset Rooftop**

A cool fragrance infused  
with a touch of sweetness.

• **Morning Florist**

A floral fragrance featuring  
fresh rose blooms.

Each, 1.0 fl. oz.

Comes in gift box.

217-817 reg. \$9.99

**\$6.99**

**3-piece set**



**Mini-Size  
Holiday Hand Cream**  
Can't decide? Get them both!  
Each, 1.7 fl. oz. reg. \$3  
**\$2.49 each**

**Skin So Soft  
Pear and Freesia**  
217-200

**Moisture Therapy  
Soothing and Hydrating**  
Fragrance-free.  
217-750



great  
stocking  
stuffers!

**Bath Bomb Ornament**  
Hang 'em on your  
Christmas tree. Then run  
'em under water in your  
tub and unwind with  
warm winter scents!  
Each, 1.6 fl. oz. reg. \$10  
**\$8 each**

**Star**  
(Coconut Milk)  
150-426

**Christmas Tree**  
(Brown Sugar)  
150-411



## ANEW ULTIMATE / ANEW PLATINUM / ANEW POWER SERUM

### A. Anew Ultimate

#### Multi-Performance Eye System

Visibly smooths crow's-feet and de-puffs under-eye bags. Cream, .5 oz. net wt. Elixir, .09 oz. net wt.

854-433 reg. \$42

**\$27.99**

### B. Anew Ultimate Multi-Performance Day Cream Broad Spectrum SPF 25

You'll see wrinkles fade and youthful vibrance return. 1.7 oz. net wt.

763-307 reg. \$42

**\$27.99**

### C. Anew Ultimate Night Repair Serum

With peptides, licorice, hyaluronic acid and niacinamide. Diminishes the appearance of fine lines and visibly improves skin tone and texture. Use PM before moisturizer. 1 fl. oz.

625-355 reg. \$45

**\$26.99**

### D. Anew Ultimate Multi-Performance Night Cream

It works while you sleep to revive and recreate the look of youthful skin. 1.7 oz. net wt.

763-311 reg. \$42

**\$27.99**

### E. Anew Ultimate Supreme Eye Balm

Infused with squalane, sunflower seed oil and antioxidant vitamin E. Moisturizing formula. Wear alone or under makeup. 0.1 oz. net wt.

625-340 reg. \$45

**\$26.99**



### Anew Ultimate Supreme Dual Elixir

Follow with Advanced Performance Crème. Serum/Oil, .67 fl. oz. each.

588-421 reg. \$60

### Anew Ultimate Supreme

#### Advanced Performance Crème

With Black Pearl Extract.

See a dramatic difference in deep wrinkles and skin radiance.

1.7 oz. net wt.

014-735

reg. \$60

**\$38.99**

each



### ANEW Ultimate Regimen Set

Includes three full-size moisturizers plus one try-it-size serum.

- **Multi-Performance Day Cream Broad Spectrum SPF 25**

1.7 oz. net wt.

- **Multi-Performance Night Cream**

1.7 oz. net wt.

- **Multi-Performance Eye System**

Cream, .5 oz. net wt.

Elixir, .09 oz. net wt.

- **Anew Power Serum**

.24 fl. oz.

4-PIECE  
BOXED KIT

923-228

reg. \$128

**\$54.99**



**FREE**

Isa Knox LXNEW Ultimate Rejuvenating Eye Serum with any \$40 skin care purchase, pages 54-78. **\$50 value.**

Sold separately on page 56. Limited quantities.

**Anew Platinum Age Delay Serum**

With niacinamide (vitamin B3) and panthenol (pro-vitamin B5), plus peptides that help visibly boost elasticity and lift facial contours for a more youthful look. Use AM and PM before moisturizer. 1 fl. oz.

**625-609**  
reg. \$45  
**\$26.99**



**NEW**

**Anew Platinum Sculpting Body Serum**

With niacinamide, panthenol (pro-vitamin B5) and powerful peptides, effective anti-aging ingredients known to help boost moisture, leaving skin looking firmer, smoother and more youthful. 6.7 fl. oz.

**506-249** reg. \$45  
**\$26.99**



**Anew Platinum Firm and Sculpt Cream for Neck and Chest**

With Peptide Lifting Complex. For skin on your neck and chest, vulnerable to sagging. Use PM after cleansing. 1.7 oz. net wt.

**763-584** reg. \$42  
**\$27.99**



**Anew Platinum Night Cream**

Skin appears smoother overnight, resculpted over time. 1.7 oz. net wt.

**753-439**  
reg. \$42  
**\$27.99**



**Anew Platinum Eye & Lip Cream**

Visibly smooths and reshapes the area around eyes...and lips, too! Dual applicator. .5 oz. net wt.

**328-072**  
reg. \$42  
**\$27.99**



**Anew Platinum Day Cream Broad Spectrum SPF 25**

Fight gravity...or sun damage? With this cream, you can do both. 1.7 oz. net wt.

**184-146**  
reg. \$42  
**\$27.99**



**Anew Platinum Regimen Set**

Includes three full-size moisturizers plus one try-it-size serum.

- **Day Cream Broad Spectrum SPF 25**  
1.7 oz. net wt.
- **Night Cream**  
1.7 oz. net wt.
- **Eye & Lip Cream**  
.5 oz. net wt.
- **Anew Power Serum**  
.24 fl. oz.

**4-PIECE BOXED KIT**  
**923-467** reg. \$128  
**\$54.99**



**Anew Power Serum**

Visibly improves wrinkles, radiance, firmness and texture. Use AM and PM after cleansing, as your treatment before moisturizing. 1 fl. oz.

**417-187**  
reg. \$45  
**\$26.99**



## ISA KNOX LXNEW ULTIMATE Rejuvenating collection



**Isa Knox LXNEW Ultimate Rejuvenating Multi-Corrector**  
 Luxurious paeonol-infused serum with niacinamide and panthenol to help visibly address key signs of aging. Skin looks smoother and more youthful. Pat into areas prone to fine lines and wrinkles before moisturizer. 1.7 fl. oz. **496-595**  
 reg. \$50  
**\$34.99**

**Isa Knox LXNEW Ultimate Rejuvenating Day Cream**  
 With paeonol, visibly reduces wrinkles and improves the look of elasticity, radiance and skin texture. With nutmeg to help visibly even skin tone. 1.7 fl. oz.  
**351-892**  
 reg. \$50  
**\$39.99**



**Isa Knox LXNEW Ultimate Rejuvenating Serum**  
 With paeonol and ceramides, visibly improves elasticity, radiance and skin texture, and reduces the appearance of wrinkles. 1.35 fl. oz.  
**756-624** reg. \$56  
**\$44.99**



**Isa Knox LXNEW Ultimate Rejuvenating Eye Serum**  
 Infused with paeonol and niacinamide to help visibly reduce fine lines around the eye area and depuff under-eye bags. 1 fl. oz. **567-177**  
 reg. \$50  
**\$39.99**



**Isa Knox LXNEW Ultimate Rejuvenating Balm Stick**  
 With peony extract, plus a firming complex featuring castor, moringa and argan oils. Apply to forehead, eyes and neck, or anywhere you want extra care. .24 fl. oz.  
**267-593**  
 reg. \$24  
**\$19.99**



**Isa Knox LXNEW Ultimate Rejuvenating Dual Night Cream**  
 With paeonol and macadamia oil. Volume Cream: Rice bran extract helps visibly plump skin. Firming Cream: Helps boost collagen and elastin. Each, .85 fl. oz.  
**564-015**  
 reg. \$50  
**\$39.99**





Innovative formulas with organic hibiscus extract help skin look lifted from every angle



**Isa Knox LXNEW Platinum Sculpting Oil Serum**

Hibiscus extract-infused serum, with rejuvenating peptides and antioxidants. Skin looks firmer and more lifted. 1.35 fl. oz. **318-720 reg. \$56 \$44.99**

**Isa Knox LXNEW Platinum Sculpting Day Cream**

Infused with moisturizing hibiscus extract and soothing ceramide. Visibly tightens facial contours. 1.7 fl. oz. **318-845 reg. \$50 \$39.99**

**Isa Knox LXNEW Platinum Sculpting Night Cream**

With firming hibiscus extract, ceramide, squalane and shea butter. Skin looks firmer, smoother and more defined. 1.7 fl. oz. **318-850 reg. \$50 \$39.99**

**Isa Knox LXNEW Platinum Sculpting Eye Cream**

With hibiscus extract, panthenol and antioxidants. Leaves the delicate eye area looking firmer, brighter and more defined. .84 fl. oz. **318-883 reg. \$50 \$39.99**

**Isa Knox LXNEW Platinum Sculpting Neck and Chest Cream**

With hibiscus extract, ceramide, shea butter, panthenol and squalane to help vulnerable skin along the neck and chest appear firmer, smoother and lifted. 1.7 fl. oz. **548-069 reg. \$50 \$39.99**



## SKIN CARE COLLECTIONS save on all your faves

### CLEANSERS & HAND CARE SET

**Silicone Glove  
Protective Hand Cream**  
3.4 fl. oz.

**Isa Knox LXNEW Clean  
2-in-1 Exfoliating  
Cleansing Balm**  
3.5 oz. net wt.

**Isa Knox LXNEW Clean  
Balancing Gel Cleanser**  
5 fl. oz.

**3-PIECE SET**  
**\$39.99**  
**\$48 VALUE**  
380-060



### SMOOTH & MOISTURIZE SET

**Farm Rx  
Green Goddess Cream**  
3.04 fl. oz.

**Isa Knox Anew Clinical Collagen  
Booster Microneedling Polisher**  
1.7 fl. oz.

**Isa Knox Anew Clinical  
Line Eraser with Retinol [1.0%]  
Advanced Retinol Serum**  
1 fl. oz.

**3-PIECE SET**  
**\$39.99**  
**\$128 VALUE**  
380-113



### CLEANSE ROUTINE PLUS SET 1

**the true cream  
aqua bomb  
aloe**  
1.69 fl. oz.

**Herb Day 365 Amino Acid  
Cleansing Foam - Aloe**  
5.7 fl. oz.

**Rice Water Bright  
Facial Massage Cream**  
6.7 fl. oz.

**3-PIECE SET**  
**\$34.99**  
**OVER \$77 VALUE**  
380-257



**ISA KNOX LXNEW  
ULTIMATE SET**

Isa Knox LXNEW  
Ultimate Rejuvenating  
Balm Stick  
.24 fl. oz.

Isa Knox LXNEW  
Ultimate Rejuvenating  
Day Cream  
1.7 fl. oz.

**2-PIECE SET**  
**\$32.99**

**\$74 VALUE**

855-076



**CLEANSE ROUTINE PLUS SET 2**

Daily Moment  
Vegan Hand Cream -  
Midnight Street 1 fl. oz.

Rice Water Bright  
Mild Cleansing Water 16.9 fl. oz.

Rice Water Bright  
Foaming Cleanser 10 fl. oz.

Rice Water Bright Cleansing  
Facial Wipes 50 sheets.

**4-PIECE SET**  
**\$19.99**

**OVER \$42 VALUE**

380-166



**CALENDULA PLUS SET**

Calendula Essential Moisture  
Cream 1.69 fl. oz.

Calendula Essential Moisture  
Serum .67 fl. oz.

Calendula Essential Moisture  
Eye Cream .67 fl. oz.

Rice Water Bright  
Foaming Cleanser 5 fl. oz.

**4-PIECE SET**  
**\$21.99**

**OVER \$47 VALUE**

380-424



**Isa Knox Anew Clinical Line Eraser with Retinol Targeted Treatment**

In just one week, the look of deep lines is smoothed and resurfaced. Use PM. .67 fl. oz. **729-397** reg. \$40 **\$23.99**

**Isa Knox Anew Clinical Line Eraser with Retinol Treatment**

Great for first-time retinol users. Use AM/PM. 1 oz. net wt. **729-382** reg. \$45 **\$27.99**



**Isa Knox Anew Clinical Collagen Booster Eye Lift Pro Dual Eye System**

With a peptide complex to help boost skin renewal. In one week, eye area looks lifted, firmer and tighter. Gel, .33 fl. oz. Cream, .33 fl. oz.

**729-435** reg. \$40 **\$23.99**



**Isa Knox Anew Clinical Line Eraser with Retinol [1.0%] Advanced Retinol Serum**

Our highest dose of retinol. Dramatically reduces the appearance of fine lines, wrinkles and dark spots. 1 fl. oz. **390-751** reg. \$50 **\$39.99**



**100%** showed clinical improvement of fine lines and wrinkles in one week, with increased results over time.

**Isa Knox Anew Clinical Collagen Booster Microneedling Polisher**

At-home alternative to micro-dermabrasion and micro-needling procedures. Visibly diminishes pores, fine lines and wrinkles. Skin looks smoother and more radiant.

1.7 fl. oz. **798-592** reg. \$34 **\$19.99**



**Isa Knox Anew Clinical Collagen Booster Firming Cream**

With peptides that boost skin renewal to help to visibly firm skin and restore youthful bounce. Also infused with moisturizing and skin-plumping niacinamide and squalane.

For optimal results, apply following Rejuvenating Serum Ampoules.

Hygienic, airless pump. 1.7 fl. oz.

**069-327** reg. \$45 **\$27.99**



**Isa Knox Anew Clinical Collagen Booster Rejuvenating Serum Ampoules**

Powerful peptide blend boosts skin renewal. 60 capsulated single-use ampoules.

.008 fl. oz. each.

**803-077** reg. \$62.50 **\$49.99**



**Isa Knox Anew Clinical Revitalize & Reveal Extra Strength Retexturizing Peel**  
 Results similar to a 35% pro glycolic peel.\* 30 fragrance-free pads. 2" diam.  
**729-420**  
 reg. \$40  
**\$23.99**

\*In 6 out of 8 attributes tested over a 7-week period.



**Isa Knox Anew Clinical Revitalize & Reveal Resurfacing Expert Smoothing Fluid**  
 79% as effective as a pro micro-dermabrasion without the same irritation.  
 1 fl. oz.  
**852-282**  
 reg. \$44  
**\$27.99**



**Isa Knox Anew Clinical Revitalize & Reveal Advanced Wrinkle Corrector**  
 In just two weeks, wrinkles appear reduced. 1.7 fl. oz.  
**914-576**  
 reg. \$40  
**\$23.99**



**Isa Knox Anew Clinical Revitalize & Reveal Intensive Peel**  
 An intensive resurfacing peel similar to pro acid peels. With AHA and PHA.  
 1 fl. oz.  
**780-025**  
 reg. \$45  
**\$27.99**



**Isa Knox Anew Clinical Revitalize & Reveal Resurfacing Lotion for Body**  
 Exfoliates with gentle yet effective AHA lactic acid. Moisturizes with shea butter.  
 5 fl. oz. **390-785** reg. \$34  
**\$19.99**

**Skinvincible Deep Recovery Cream**  
 Lessens the look of age damage in weeks. Use PM.  
 1 oz. net wt. **290-351**  
 reg. \$40  
**\$23.99**



**Avon Solutions Nurtura Replenishing Cream**  
 Adds moisture to dry skin.  
 1.7 fl. oz.  
**908-263**  
 reg. \$14  
**\$9.99**



**Avon Solutions Anti-Aging Cream**  
 Moisturizing formula works to visibly smooth the appearance of fine lines and wrinkles.  
 1.7 fl. oz.  
**906-681** reg. \$14  
**\$9.99**



**Avon Solutions Dramatic Firming Cream**  
 Skin looks and feels smoother. 1.7 fl. oz.  
**374-657**  
 reg. \$14  
**\$9.99**



**Avon Solutions Banishing Cream Skin Discoloration Improver**  
 Visibly improves skin tone.  
 2.5 fl. oz. **463-374**  
 reg. \$14  
**\$9.99**



**Avon Care Silicone Glove Protective Hand Cream**  
 Lasting protection from dryness.  
 3.4 fl. oz.  
**366-887**  
 reg. \$6  
**\$2.69**



## ANEW VITAMIN C / ISA KNOX ANEW SOLAIRE

### Anew Vitamin C Overnight Radiant Mask

Visibly improves texture and boosts radiance. Apply after cleansing, treating and moisturizing.

1.7 fl. oz.  
157-086  
reg. \$36  
**\$19.99**



### Anew Vitamin C Warming Peel

With vitamin C flakes and natural seeds, exfoliates with a warming sensation.

3.4 fl. oz.  
936-425  
reg. \$27  
**\$15.99**



### Anew Vitamin C Brightening Serum

Skin is visibly energized and brightened with the power of 10% pure vitamin C. 1 fl. oz.

522-066  
reg. \$44  
**\$24.99**



### Anew Vitamin C Illuminating Priming Moisturizer

With natural citrus extracts. Wear alone or under makeup.

1.7 fl. oz. 868-508  
reg. \$34  
**\$18.99**

### Anew Vitamin C Brightening Eye Cream

Visibly reduces dark circles. Leaves under-eye area looking brighter and more even-toned.

.5 fl. oz.  
868-512 reg. \$34  
**\$18.99**

### Anew Vitamin C Antioxidant Lip Treatment

Nourishes lips with vitamins C and E.

.13 oz. net wt.  
784-547  
reg. \$14  
**\$7.99**



### Anew Vitamin C Illuminating Body Serum

Light-reflecting pigments leave skin looking luminous.

6.7 fl. oz. 157-071  
reg. \$34  
**\$19.99**



### Anew Vitamin C Nourishing Body Butter

With hydrating shea butter and sodium PCA, enriched with niacinamide, helps restore radiance with vitamins C and E to defend against free radical damage.

Uplifting fruity-floral and citrus scent. 7.8 fl. oz.

**443-767 reg. \$32  
\$17.99**

### Anew Vitamin C Glow Body Scrub

Sugar-based formula with pineapple and papaya enzymes and coffee seed extract exfoliates dry, dull skin, while a blend of sunflower seed and sweet almond oils replenishes moisture. Refreshing citrus scent.

9 oz. net wt.

**443-752 reg. \$36  
\$19.99**



**100%  
mineral  
sunscreen  
with no  
white cast!**

### Isa Knox Anew Solaire Everyday Mineral Face Protection Cream Broad Spectrum SPF 50

Lightweight formula with zinc oxide. Suitable for sensitive skin. Water-resistant (40 minutes). 1.7 fl. oz.

**437-143  
reg. \$29  
\$22.99**



### Isa Knox Anew Solaire Everyday Face Protection Lotion Broad Spectrum SPF 50

Creamy lotion formula. Wear alone or under makeup. 1.7 fl. oz.

**911-400  
reg. \$29  
\$22.99**



### Isa Knox Anew Solaire Active Face & Body Protection Lotion Broad Spectrum SPF 50

Water-light formula glides on smoothly all over face and body. 2.7 fl. oz.

**154-948  
reg. \$31  
\$24.99**

## HYDRA FUSION

### Anew Hydra Fusion Nighttime Facial Treatment

Visibly plumps skin. Increases moisture by 3X.

Relaxing rose scent. 1.7 oz. net wt. **139-429**

reg. \$34

**\$18.99**



### Anew Hydra Fusion Gel Cream

Skin appears smoother, refreshed and plumped

with lasting hydration. 1.7 oz. net wt. **266-893**

reg. \$34

**\$18.99**



### Anew Hydra Fusion De-Puffing Eye Serum

With caffeine and a cooling ceramic tip. Instantly boosts hydration around the eye area by 3X. Eyes look and feel refreshed. .5 fl. oz. **137-737**

reg. \$34

**\$18.99**

### Anew Hydra Fusion 1.5% Hyaluronic Acid Serum

With three different molecular sizes of HA that reach multiple layers of skin's surface to visibly plump skin.

1 fl. oz.

**290-390**

reg. \$44

**\$24.99**



### Anew Hydra Fusion Cleansing Micellar Water

Gently lifts dirt, oil and makeup while boosting hydration. No need to rinse off.

10.1 fl. oz.

**139-380**

reg. \$14

**\$8.99**







normal to dry skin

**Nourishing Cream Cleanser**  
With panthenol (vitamin B5), rosemary and soapwort extracts. Removes impurities and makeup while restoring moisture. 5 fl. oz.  
**717-990 reg. \$12**  
**\$9.99**

normal, dry and combination skin

**Balancing Gel Cleanser**  
Gel to foam. With panthenol (vitamin B5). Amino acid-based ingredients derived from coconut help remove oil and impurities while rebalancing skin. 5 fl. oz.  
**718-010 reg. \$12**  
**\$9.99**

oily to normal skin

**Soothing Whipped Oil Cleanser**  
Amino acid-based ingredients derived from coconut eliminate impurities and excess oil. With panthenol (vitamin B5) and aloe. 5 fl. oz.  
**718-025 reg. \$16**  
**\$12.99**

normal, dry, combination and oily skin

**2-in-1 Exfoliating Cleansing Balm**  
Melts away makeup and impurities. With panthenol (vitamin B5) and bamboo stem powder. Spatula included. 3.5 oz. net wt.  
**718-006 reg. \$30**  
**\$24.99**

**Cleansing Brush**  
Includes one brush head. Requires two AA batteries (not included).  
**679-266**  
reg. \$47  
**\$28.99**



## FARM RX formulated with natural ingredients

**NEW**

### Farm Rx Pineapple Plus Radiance Boosting Mask

With natural alpha hydroxy acid, plus an antioxidant-rich fruit complex to help skin look smoother and more radiant.

3 fl. oz.

456-266 reg. \$37  
**\$27.99**

### Farm Rx Pineapple Plus Instant Glow Toner

Revitalizing toner helps visibly minimize pores. Use AM and PM after cleansing.

5 fl. oz. **027-382**

reg. \$25  
**\$17.99**

### Farm Rx Pineapple Plus Brightening Jelly Serum

Helps improve dull, dry skin and reduce the appearance of fine lines, wrinkles and pores. Skin looks radiant.

1 fl. oz. **027-440** reg. \$44  
**\$32.99**



96%  
natural

87%  
natural

89%  
natural

### Farm Rx Amazon Berry Boost Moisturizing & Firming Mask

Ultra-moisturizing face mask with acai berry, Brazil nut oil plus murumuru and cupuaçu butters. Helps skin look firmer, smoother and tighter.

3 fl. oz. **413-052**

reg. \$37  
**\$27.99**



85%  
natural

### Farm Rx Amazon Berry Boost Smoothing & Firming Body Cream

With moisturizing and nourishing Brazil nut oil plus murumuru and cupuaçu butters.

5 fl. oz. **027-655**

reg. \$25  
**\$17.99**



86%  
natural

**Farm Rx Super Greens  
Multivitamin Moisture Cream**  
Locks in essential nourishing moisture. Use daily after cleansing, serums and treatments. 3.04 fl. oz. **314-141 reg. \$37**  
**\$27.99**

**Farm Rx Super Greens  
Cooling Gel**  
Lightweight moisturizer helps soothe and cool skin. As needed, after serum apply a thicker layer as a mask to hydrate overnight. 3.04 fl. oz. **354-227 reg. \$37**  
**\$27.99**

**Farm Rx Super Greens  
Nourishing Cleansing Balm**  
Helps boost moisture barrier as it dissolves makeup and impurities. For normal, dry, combination, oily and sensitive skin types. 3.3 fl. oz. **516-944 reg. \$41**  
**\$30.99**

**Farm Rx Super Greens  
Refreshing Gel Cleanser**  
With soothing aloe. Convenient pump. Eco-friendly packaging and glass bottle. Use AM/PM. 8.11 fl. oz. **913-049 reg. \$25**  
**\$17.99**

**Farm Rx Super Greens  
Refreshing Gel Cleanser Refill\***  
Includes two refills. 16.9 fl. oz. **913-053 reg. \$37**  
**\$27.99**  
\*Not shown.

**Farm Rx Super Greens  
Refreshing Eye Cream**  
With nourishing Super Greens formula, plus cucumber extract. Hydrates and helps skin feel soothed. Green tea helps visibly de-puff. 1 fl. oz. **412-826 reg. \$31**  
**\$22.99**



88%  
natural

98%  
natural

86%  
natural

87%  
natural

85%  
natural



**NEW**  
**Farm Rx  
Super Greens  
Trial Kit**  
Includes two try-it sizes:  
• Cooling Gel, 1.7 fl. oz.  
• Multivitamin Moisture Cream, 1.7 fl. oz.  
**496-270 reg. \$25**  
**\$17.99**





**Farm Rx Green Goddess Cream**  
100mg CBD. Helps soothe and visibly reduce redness. Use AM/PM after serum. For added radiance, follow with Facial Oil. 3.04 fl. oz. **338-027**  
reg. \$44  
**\$32.99**

**Farm Rx Green Goddess High Dose Serum**  
300mg CBD. Skin feels softer and soothed. Use AM/PM after cleansing, before CBD cream or facial oil to visibly boost results. 1 fl. oz. **338-031**  
reg. \$50  
**\$37.99**

**Farm Rx Green Goddess Facial Oil**  
100mg broad spectrum CBD. Suitable for sensitive skin. Rich in omega acids and vitamin E. Use AM/PM after cleansing and serum. Fragrance-free. 1 fl. oz. **934-733** reg. \$50  
**\$32.99**

**Farm Rx Bakuchiol Serum**  
Concentrated lightweight oil-textured formula penetrates skin's surface to target fine lines, wrinkles and dullness without irritation. 1 fl. oz. **247-417**  
reg. \$44  
**\$32.99**



98%  
natural

**Farm Rx Bakuchiol Eye Cream**  
Visibly reduces dark circles, fine lines and wrinkles without irritating the delicate eye area. 1 fl. oz. **565-834**  
reg. \$37  
**\$27.99**



89%  
natural

**Farm Rx Bakuchiol Cream**  
Moisturizing cream with bakuchiol, a plant-based alternative to retinol that you can use during the day. Visibly reduces wrinkles. Vegan. Hypoallergenic. Suitable for sensitive skin. 3.04 fl. oz. **004-044**  
reg. \$44  
**\$32.99**



92%  
natural

## THE FACE SHOP Jeju Aloe

### Jeju Aloe Refreshing Face Mask

With soothing aloe, helps hydrate and nourish dry winter skin. Single-use mask. 1.01 fl. oz.

**069-480**  
reg. \$3  
**\$2.50**



### Jeju Aloe Fresh Soothing Foam Cleanser

Gentle gel-to-foam formula hydrates as it cleanses. With soothing aloe, moisturizing panthenol and other refreshing herbal extracts such as cica, camellia leaf, licorice root and rosemary. 5 fl. oz.

**450-090**  
reg. \$11.99  
**\$9.99**



### Jeju Aloe Fresh Soothing Gel

With 95% aloe vera extract, instantly hydrates and soothes dry, sensitive skin. Infused with other soothing herbal extracts, like chamomile, lemon balm, rosemary and lavender. For face and body. 10.1 fl. oz.

**984-304** reg. \$8  
**\$6.99**



### Jeju Aloe Fresh Ice Soothing Gel

3-in-1 gel with aloe vera extract. Use as moisturizer, soothing after-sun care or facial pack. Refrigerate for enhanced cooling. Apply to dry, sensitive, irritated areas of face and body. 10.1 fl. oz.

**925-402**  
reg. \$11  
**\$8.99**



**NEW**

### Jeju Aloe Body Wash

Helps moisturize dry skin while it cleanses, leaving skin feeling nourished. Light aloe scent. 13.5 fl. oz.

**069-509** reg. \$12  
**\$8.99**

**NEW**

### Jeju Aloe Hand and Body Lotion

With aloe vera extract, known to calm and soothe irritated skin and dry hands. Clinically proven to help dry skin feel nourished for 48 hours. 13.5 fl. oz.

**069-441** reg. \$12  
**\$8.99**

# THE FACE SHOP Rice Water Bright

## Rice Water Bright Light Facial Cleansing Oil

Removes every trace of makeup and gently cleanses impurities on skin. With jojoba oil and rice water extract, known to visibly brighten and moisturize skin. 5 fl. oz. **720-199** reg. \$14 **\$11.99**

**Rice Water Bright Facial Cleansing Lotion**  
Rice bran oil helps brighten skin. Gently removes makeup and impurities. 6.76 fl. oz. **720-184** reg. \$12 **\$9.99**



## Rice Water Bright Facial Massage Cream

With rice water, enriched with vitamins, ceramide and minerals. Use after cleansing 2-3 times a week. 6.7 fl. oz. **450-200** reg. \$24 **\$19**



## Smaller Size! Rice Water Bright Foaming Cleanser

Same formula as the 10 fl. oz. Rice Water Bright Foaming Cleanser in a more convenient size for your medicine cabinet. 5 fl. oz. **478-479** reg. \$8 **\$6.49**



## Rice Water Bright Mild Cleansing Water

Removes makeup and impurities with micelles, so no need to rinse off! Use with a cotton pad. 16.9 fl. oz. **288-360** reg. \$14.40 **\$12**



## A. Rice Water Bright Foaming Cleanser

Light whipped foam leaves skin feeling cleansed and refreshed. With rice water and soapwort extract. Skin looks clear and bright. 10 fl. oz. **508-093** reg. \$13 **\$11**

## B. Rice Water Bright Rice Bran Gentle Exfoliating Cleanser

Daily scrub with organic rice bran powder, rice bran oil and hydrated silica. 10 fl. oz. **376-865** reg. \$15.99 **\$12.99**

## C. Rice Water Bright Cleansing Facial Wipes

Great on the go. With rice extract to moisturize while cleansing. Removes eye makeup. 50 sheets. **508-108** reg. \$11 **\$9**





**Toner**  
Balancing.  
AM/PM, use  
after cleansing,  
before serum  
and moisturizer.  
5 fl. oz. **124-142**  
reg. \$8.25  
**\$6.80**

**Emulsion**  
Replenishing.  
Semi-liquid.  
AM/PM, after  
cleansing or toning,  
before serum,  
moisturizer.  
5 fl. oz. **876-976**  
reg. \$8.25  
**\$6.80**

**Cream**  
Moisturizing.  
AM/PM, after  
cleansing, toning  
and serum.  
1.69 fl. oz. **124-635**  
reg. \$9.25  
**\$7.60**

**Rice & Ceramide Trial Kit**

Moisturizing skin care set replenishes and refreshes your look. Try all three, or to use as a complete travel kit. Three-piece boxed mini sizes. Includes:  
Toner, 1.15 fl. oz.  
Emulsion, 1.15 fl. oz.  
Cream, 0.34 fl. oz.  
**543-617 reg. \$8.75**  
**\$7.20 the kit**



## THE FACE SHOP Herb Day cleansers

### Herb Day 365 Amino Acid Facial Foaming Cleanser

Vegan mild hypoallergenic cleanser with cica. Formulated for optimal pH balance. For a moisturized and comforted feeling without tightness, even after cleansing. Each, 5.7 fl. oz. reg. \$11.50  
**\$9.60 each**

#### Peony

Helps visibly boost skin clarity, and helps hydrate and soothe skin.  
**546-229**

#### Aloe

Helps moisturize and soothe dry, itchy skin.  
**544-393**



### Herb Day 365 Master Blending Facial Foaming Cleanser - Mung Bean & Mugwort

For trouble-prone skin. Formulated with naturally derived herbal and fruit extracts, and coconut-derived moisturizing ingredients. Free of synthetic colorants and parabens. 5.7 fl. oz. **135-093 reg. \$5.25**  
**\$4.40**



### Herb Day Cleansing Tissue

Removes makeup and impurities. With soapwort, lady's mantle, lily, chamomile and cornflower. 70 sheets. **134-450 reg. \$5.75**  
**\$4.80**







**Calendula Essential Moisture**  
Daily skin care for irritated and sensitive skin. With moisturizing calendula extract, a soothing herb complex, and the ultimate hydrator, hyaluronic acid.

**A. Serum**  
A moisturizing and soothing serum that helps calm skin and enhance hydration. 1.35 fl. oz.  
**980-533**  
reg. \$13.50  
**\$11.20**

**B. Eye Cream**  
A lightweight, non-greasy, moisturizing and soothing eye cream. .67 fl. oz.  
**409-823**  
reg. \$12.50  
**\$10.40**

**C. Cream**  
A moisturizing cream that instantly hydrates while it gently helps soothe dry, itchy, irritated skin. 1.69 fl. oz.  
**465-400** reg. \$13.50  
**\$11.20**



**The Face Shop**

**Rich Hand V Special Care Hand Mask**

Coated masks contain nourishing lotion with sunflower seed oil and urea for instant moisturization. Two disposable masks, one for each hand.

541-724 reg. \$4

**\$3**



**The Face Shop Smile Foot Mask**

Disposable foot mask with naturally moisturizing urea, shea butter and collagen for baby-soft feet! Refreshes with peppermint oil. Contains two masks, one for each foot.

535-957 reg. \$4.79

**\$3.99**



## Give your hands a moment of scented bliss



### Daily Moment Vegan Hand Cream

Deeply moisturizing daily vegan hand cream with a long-lasting scent. Eco-friendly and vegan-certified. Each, 1.0 fl. oz. reg. \$4  
**\$3.29 each**

**1—Sunrise Bedroom**  
Bergamot, lavender and cedarwood.  
**741-940**

**2—Morning Florist**  
Lemon, Bulgarian rose and violet leaf.  
**741-955**

**3—Noon Park**  
Grapefruit, hyacinth and iris.  
**754-636**

**4—Sunset Rooftop**  
Pear, rose and patchouli.  
**757-931**

**5—Midnight Street**  
Cassis, rose and amber.  
**762-334**

**6—Dawn Attic**  
Orange blossom, pimento and vetiver.  
**762-353**



**explosive hydration...  
all over!**



**BELIEVE IT!**

## **3 steps in 1**

**balm → cream → oil**

melts away makeup and impurities  
while cleansing skin with hydration

### **aqua bomb makeup removing cleansing balm**

*For dryness, dullness  
& uneven texture*

Gently removes all traces of  
makeup in one step. Smooth and  
refreshing like sherbet. With lotus  
flower and marshmallow root, herbs  
known to help boost moisture and  
radiance. No oily residue. For a  
double cleanse, follow with  
aqua bomb jelly cleanser. 3.3 fl. oz.

**443-179 reg. \$46**

**\$38**

**BELIF** believe in truth for your skin

**belif** believe in truth  
**aqua bomb**  
 hydrating body moisturizer  
 With skin brightening niacinamide

Instantly hydrates with a soft, lightweight gel texture? **Yes** 100%  
 Leaves skin feeling smooth, not sticky? **Yes** 100%  
 Mineral oils **0%\***  
 Synthetic fragrances **0%\***  
 Synthetic organic dyes **0%\***  
 Animal origin ingredients **0%\***  
 Dermatologically tested

With 2 Napiers formulas: hyaluronic acid, niacinamide  
 \*The numbers represent percentage of ingredients added

**BELIEVE IT!**  
**93%**  
 of people agreed skin appears smoother\*

**aqua bomb**  
 hydrating body moisturizer  
 For dryness, dullness & uneven skin tone  
 A favorite lightweight gel moisturizer with lady's mantle, an herb known for its antioxidant and soothing benefits—now for your body. Intense hydration for visibly firmer, clearer and brighter skin. Silky finish. For all skin types. 10.13 fl. oz.  
**443-040 reg. \$36 \$30**

\*Based on a clinical study.



**the true cream aqua bomb**  
 For dryness, dullness & uneven texture  
 Water-based refreshing gel-cream cools and hydrates. (Full size not available.)  
 Try-it size, .84 fl. oz.  
**235-713 reg. \$24 \$22**



**the true cream moisturizing bomb**  
 For dryness, loss of elasticity & firmness  
 Creamy, cushiony, whipped texture, envelops skin with intense moisture.  
 Full size, 1.68 fl. oz.  
**948-463 reg. \$42 \$38**  
 Try-it size, .84 fl. oz. (not shown)  
**498-139 reg. \$24 \$22**



**the true cream aqua bomb aloe**  
 For redness, irritation & dryness  
 Moisturizing gel-cream with aloe vera extract to instantly soothe the skin, plus hydrating hyaluronic acid and soothing vitamin E.  
 1.69 fl. oz.  
**788-284 reg. \$42 \$38**



**BELIEVE IT!**

**96%**  
of people said their skin felt hydrated after cleansing\*

**aqua bomb jelly cleanser**

*For dryness, dullness & uneven texture*

Jelly to foam. Amino acids and glycerin-based cleansing agents gently cleanse.

5.41 fl. oz. **445-353 reg. \$35 \$30**

\*Based on a clinical study.

**aqua bomb hydrating toner**

*For an extra boost of hydration*

Lightweight water-based toner, with hyaluronic acid, honeysuckle flower extract and baobab tree seed extract. Leaves skin looking soft and smooth with a healthy-looking glow. Use after cleansing, before serum and moisturizer.

6.75 fl. oz. **952-974 reg. \$36 \$30**



**moisturizing eye bomb**

*For dryness, loss of elasticity & firmness*

Lightweight, refreshing eye cream cools on contact. Helps keep eye area looking firm, resilient and smooth.

.84 fl. oz. **445-478 reg. \$53 \$48**



**aqua bomb sleeping mask**

*For dull, dry, fatigued skin*

Unique jelly-pudding texture!

Skin feels replenished overnight. Explosive hydration for smoother skin and a healthy glow.

2.53 oz. net wt. **514-717 reg. \$42 \$38**



**Mission Luxereve Cream**

Perfect for dry skin.

With luxurious oils and other moisturizing ingredients for a more youthful, sculpted appearance. Use AM/PM, after Mission Luxereve Serum. In AM, follow with sunscreen.

1.76 oz. net wt. **635-740 reg. \$350 \$280**



**Mission Luxereve Lotion**

Lightweight hydration ideal for normal skin.

Improves the appearance of elasticity and firmness, and helps even tone and texture. Use AM/PM, after Serum. In AM, follow with sunscreen.

3.77 oz. net wt. **713-459 reg. \$95 \$80**



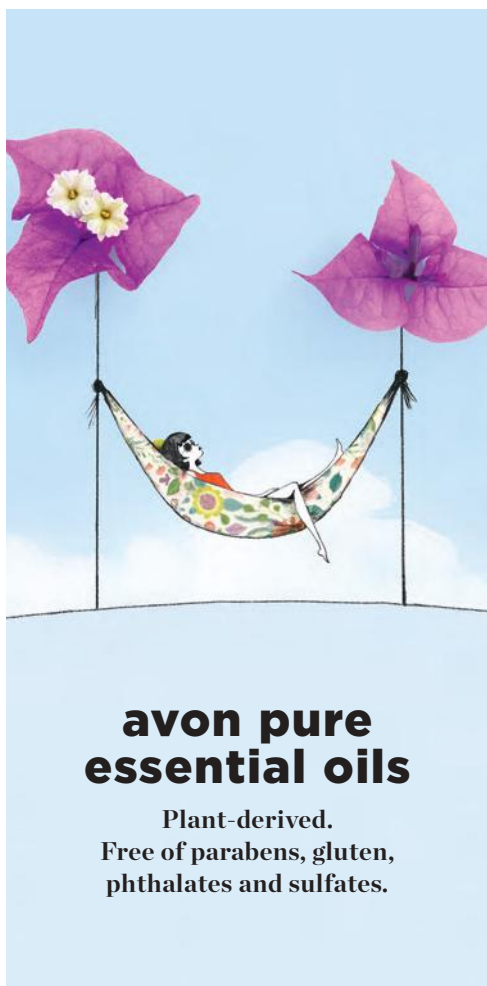
**Mission Luxereve Serum**

Deluxe regenerating serum

formulated to help boost skin elasticity and firmness. Use AM/PM, before moisturizing with Cream or Lotion.

1.01 fl. oz. **635-754 reg. \$225 \$180**





## avon pure essential oils

Plant-derived.  
Free of parabens, gluten,  
phthalates and sulfates.

### Avon Pure Roll-On De-Stress Essential Oil

With lavender and peppermint. Apply directly on skin. Instantly transform your day. Contains sweet almond oil, a carrier oil. .34 fl. oz. **098-963** reg. \$24 **\$19**



### Avon Pure Diffuser

LED light-up diffuser with three different settings releases a fine mist of essential oil and water into the air so that you can easily fill your space with the essence of the oils. 6 1/2" H. USB connection. **915-424** reg. \$39 **\$32**



### Avon Pure Essential Oil Case

Fits up to 48 essential oils and roll-ons. Man-made material with easy maintenance. Two padded stackable trays for added protection of glass bottles. Includes handle and all-around zipper. 8 3/4" L x 6 1/8" W x 7 1/2" H. **179-470** reg. \$51 **\$41**



### Avon Pure Ceramic Aroma Diffuser

Premium ceramic. Whisper-quiet. Also functions as a humidifier. BPA-free plastic water reservoir. Auto shutdown on timer or when the water runs out. 6.8 fl. oz. capacity. Approx. 3 3/4" diam. x 6 3/4" H. **141-846** reg. \$71 **\$57**



re:tune

INNER BEAUTY\*

Feel good on the inside  
so you can look great  
on the outside.

## ANTI-AGING ANTIOXIDANTS

Neutralize free radicals  
and defend skin from  
the look of aging



**re:tune Inner Beauty Youth Boost**  
With ingredients that help improve  
the clarity and hydration of skin  
while boosting antioxidant levels to  
help skin better defend itself from  
the look of aging.\* 60 tablets.

456-137  
reg. \$34  
\$28





## re:TUNE INNER BEAUTY feel good inside, look great outside

### re:tune Inner Beauty HydraBoost

Helps boost hydration and visibly soften lines with hyaluronic acid.\* 30 vegetarian capsules.

**122-761**  
reg. \$34  
**\$28**



### re:tune Inner Beauty Clear Complexion

Supports a visibly clear, even complexion. Helps balance the gut microbiome.\* 30 capsules.

**123-332**  
reg. \$36  
**\$30**



### re:tune Inner Beauty Hair, Skin & Nail Health

Promotes a healthy response to skin stressors while helping build healthy hair, skin and nails.\* 60 tablets.

**396-908**  
reg. \$42  
**\$33**



### re:tune Inner Beauty Metabolism Boost

A natural, plant-based energy and metabolism booster that helps you burn more calories.\*† 60 vegetarian capsules.

**907-195**  
reg. \$35  
**\$28**



### re:tune Inner Beauty Hydration

Supercharge your water for optimal hydration and more energy, and to boost skin health. Contains electrolytes, B vitamins and antioxidants.\* Berry flavor. 20 packets.

**966-140**  
reg. \$27  
**\$22**



### re:tune Inner Beauty Hunger Block

Helps reduce your food cravings for hours.\* 60 vegetarian capsules.

**906-920**  
reg. \$31  
**\$25**



\*These statements have not been evaluated by the Food and Drug Administration. This product is not intended to diagnose, treat, cure or prevent any disease. †With reduced dietary intake and exercise.



**HELLO,  
LIP LOVERS  
SAVE UP  
TO 30%!**

























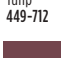

*pages 83-87*

**FIND YOUR  
POWER COLOR**



Enticing and inspiring spectrum of versatile and expressive shades.

**fmg Glimmer Satin Lipstick**  
 Lightweight, smooth and creamy formula. Infused with antioxidant pomegranate extract. Buildable medium-to-full coverage. Soft satin finish. .10 oz. net wt. reg. \$11 **\$7.69**

 Desert Moon 449-803	 Stellar 726-550	 Windstorm 883-845
 Cyclone 890-566	 Twilight 449-822	 Sierra Sunset 890-805
 Luna 895-170	 Equinox 449-818	 Honeyflower 726-531
 Aster 448-769	 Poppy 897-651	 Blaze 896-880
 Dahlia 726-350	 Constellation (Shimmer) 449-731	 Wild Cherry 449-708
 Plum Blossom 449-765	 Rose Angel 897-939	 Aurora 726-584
 Hibiscus 898-021	 Wildflower 898-040	 Eclipse 448-740
 Wildrose 898-533	 Tulip 449-712	 Celestial 895-352
	 Morning Glory 449-750	 Violet Night 898-548



Aurora  
726-584



Featured shade: fmg Cashmere Essence in Summer Berry.

Good Housekeeping Magazine 2022 Beauty Award Winner

**fmg Cashmere Essence Lipcream**

Plant-based Bio-Retinol, known for effective anti-aging properties without the harsh irritation, improves lip hydration and protection. With ginseng cell extract, antioxidant meadowfoam seed oil and vitamin E. High-shine finish.

.11 oz. net wt. **reg. \$22 \$15.49**



Cherry Rush 876-870 Cozy Rosy 879-626



Coral Charm 879-148 Honey Mandarin 876-024



Summer Berry 881-766 Plush Peony 873-977

Summer Berry 881-766



Lush color and shine.

Mauvelous 334-681

**fmg Cashmere Rouge Lacquer**

High-performance all-day wear. Dual-ended. Full-coverage color dries quickly without feathering. Moisturizing top coat locks color in place for a high-shine finish. Transfer-, smudge- and feather-proof.

.20 oz. total net wt. **reg. \$22 \$15.49**



Pinkfection 336-919 Ravishing Rose 334-749 Beautifully Bare 334-715



Berry Bliss 336-335 Mauvelous 334-681 Stunning Scarlet 334-825



## GLIMMER LIP

Get your lips ready for prime time!

### fmg Glimmer Lip Polish

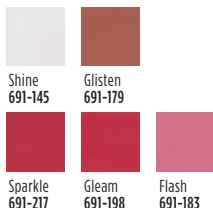
Sugar-based formula gently buffs away dry, flaky skin for softer, smoother lips. Helps polish and prepare lips for effortless color application. A blend of vitamin E, moisturizing squalane, and extracts of blueberry, strawberry and raspberry leaves lips feeling supple, pampered and kissably soft. .35 oz. net wt. **594-677 reg. \$14 \$8.99**



Drench lips in dimensional color and shine.

### fmg Glimmer Lip Glaze

Non-sticky creamy formula gives hours of wear without feathering. With antioxidant vitamin E. Buildable sheer-to-medium coverage. .3 fl. oz. reg. \$11 **\$6.99**



Gleam 691-198



Keep your pout soft and kissable!

### fmg Glimmer Lip Conditioner

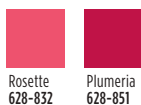
With mango seed butter, vitamin E, and jojoba and sunflower seed oils. Leaves dry, cracked lips feeling soft and smooth. .12 oz. net wt. **794-578 reg. \$12 \$8.29**



Brightens lips and cheeks.

### fmg Glimmer Lip & Cheek Stain

Highly pigmented shades that wear all day. Lightweight gel formula blends and builds like a dream, providing the perfect pop of gorgeous luminous color. Brush tip applicator. Transfer-proof. Free from parabens and fragrance. Vegan. .19 fl. oz. reg. \$14 **\$9.99**



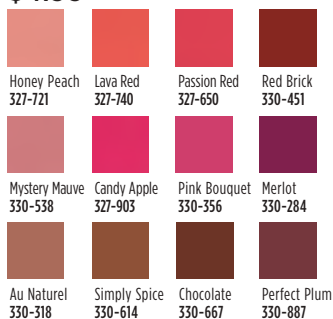
Plumeria 628-851



Prevents feathering.

### fmg Glimmer Lipliner\*

Long-wearing. Retractable. Matte finish. .01 oz. net wt. reg. \$9 **\$4.99**



Passion Red 327-650

\*Packaging may vary.

# BUTTER ME UP



Luscious lip butter, high-shine  
gloss and sheer color all in one!

**fmg LOVE Lip Butter**

Ultra-creamy formula, infused with nourishing cupuaçu seed butter, mango extract and apricot kernel and olive fruit oils, leaves lips feeling soft and kissable with intense moisture and shine. Non-sticky. Buildable coverage. Click pen applicator delivers right amount of color. Vanilla scented. Free from parabens, sulfates and phthalates. .09 oz. net wt. reg. \$17

**\$12.99**



Love Affair  
063-242



Pucker Up  
063-128



Secret Crush  
063-147



Tease  
063-132



Flirtatious  
063-219



Rendezvous  
063-166

Featured shade:  
fmg LOVE Lip Butter in  
Love Affair.

# LIP

Deeply moisturizing lip oil.

**TPSY Drunk Shiny Lip Oil**

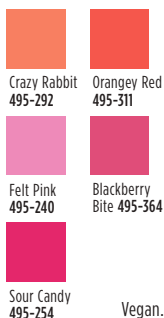
Instantly absorbed. A tint of color that matches every lip. No residue. No stickiness. Infused with jojoba, argan and castor oils. .13 oz. net wt. reg. \$15 **\$10.49**



Get kiss-ready with the perfect partner.

**TPSY Forever Lip Marker**

Hydrating formula that stays on lips all day. Unique marker design allows for easy application. Kiss-proof. .08 fl. oz. reg. \$15 **\$10.49**

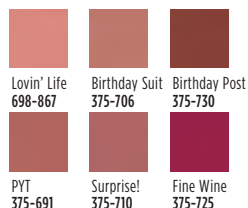


Vegan. Earth-friendly packaging.

A nude pout for every party.

**fmg Glimmer Birthday Balm Lip Crayon**

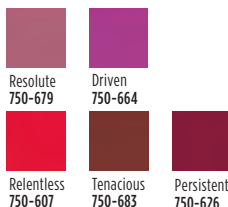
Butter-soft balm with a sheer color and shine. .1 oz. net wt. reg. \$12 **\$8.99**



A burst of vivid color with a featherlight feel and velvety soft matte finish.

**Mattitude Liquid Lip**

Weightless, non-drying formula that lasts for hours. Poppy seed oil and vitamin E nourish lips. Paraben-, sulfate- and phthalate-free. .13 fl. oz. reg. \$13 **\$8.99**



## LASHES + BROWS

Lash-hugging heart-, flower- and cylinder-shaped lengthening fibers for voluminous, waterproof wear.

### LOVE at 1st Lash Waterproof Mascara

Love Waterproof Complex™ with Lashrez, olive oil and vitamin E. Transfer-resistant. Clump-, flake- and smudge-proof. .3 fl. oz.

#### Waterproof Blackest Black

293-805

reg. \$15

**\$12.99**

*cobra brush lifts & curls*



Ultrafine felt tip sculpts, fills and shapes brows and enhances your look to perfection.

Espresso Martini  
860-420

### TPSY Snatched Brow & Freckle Marker

Long-wearing formula. Free from parabens and talc.

.01 oz. net wt. reg. \$15

**\$12**



Espresso Martini  
860-420



Irish Cream  
549-228



Spiked Macchiato  
860-416



Volumizing and lengthening heart-shaped fibers + intense black pigments.

### fmg LOVE at 1st Lash Mascara

Love Complex™ with lycopene, olive oil and vitamin E. Transfer-resistant. Clump-, flake- and smudge-proof. .3 fl. oz.

#### Blackest Black 698-670

reg. \$15

**\$12.99**



Long and healthy.

### fmg Glimmer SuperExtend Nourishing Mascara

Enriched with vitamin E, and argan and coconut oils. Won't clump, smudge or flake off.

Each, .237 fl. oz.

#### Brown Black 698-852

**Black 698-848**

reg. \$11

**\$8.99**



Super volume.

### fmg Glimmer SuperShock Volumizing Mascara

Instant high-gloss lushness. .338 fl. oz.

#### Black 698-829

reg. \$11

**\$8.99**



Waterproof volume.

### fmg Glimmer Wash-Off Waterproof Mascara

Washes off easily with soap and water. .21 oz. net wt.

#### Black 723-107

reg. \$10

**\$7.99**





## EYES + BROWS



**MATTE Tigress**  
741-333



**MATTE Icon**  
741-439



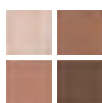
**MATTE Bombshell**  
741-170



**MATTE Calypso**  
741-261



**MULTI Tempress**  
884-731



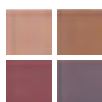
**MULTI Idol**  
900-975



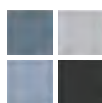
**MULTI Maven**  
884-750



**MULTI Siren**  
901-493



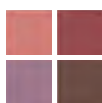
**MULTI Mistress**  
883-902



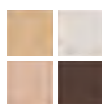
**MULTI Vixen**  
901-474



**MULTI Minx**  
885-738



**MULTI Darling**  
880-789



**MULTI Goddess**  
901-330



**MULTI Muse**  
880-459

For Multi Quad finishes, visit Avon.com.

Color-coordinated shades work together for expressive eye looks that last all day.

### fmg Glimmer Eyeshadow Quad

Creamy soft powder formula hugs lids with rich color for all-day wear without the fallout. Free from parabens and fragrance. Available in Multi or All Matte. .21 oz. total net wt. **reg. \$15**

**\$11.99**



**MATTE Tigress**  
741-333

Universal clear shade for a professional sculpted look.

### fmg Colors of LOVE

#### Hi-Brow Sculpting Brow Gel

Flexible, flake-proof formula. With moisturizing aloe and nourishing hyaluronic acid. Soft matte finish. Tapered micro-brush ensures precise application. Wear alone or over your favorite brow products. Free from parabens, phthalates and fragrance. .11 fl. oz.

#### Universal Love (Clear)

**536-695**

**reg. \$17**

**\$12.99**



Amp up brows with a sweep of tinted gel for a full, fluffy look.

### fmg Colors of LOVE

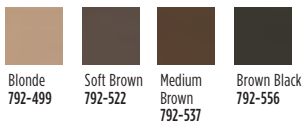
#### Hi-Brow Tinted Brow Gel

Water-resistant, smudge- and flake-proof formula fills, grooms and shapes for 24-hour wear. With heart-shaped fibers, clay and vitamin E. Soft matte finish. Tapered micro-brush. .11 fl. oz. **reg. \$17**

**\$12.99**



**Medium Brown**  
792-537



**Blonde**  
792-499

**Soft Brown**  
792-522

**Medium Brown**  
792-537

**Brown Black**  
792-556

Vivid stay-all-day shimmery color.

**fmg Glimmershadow  
Liquid Eyeshadow\***

Long-wearing, no-smudge, no-crease, buildable formula with no messy fallout. Ultrafine pearl finish. Water-resistant. Paraben-, phthalate- and sulfate-free. .07 fl. oz. reg. \$12

**\$8.99**



**MATTE SATEEN**  
Citrine  
451-120



**MATTE SATEEN**  
Pink Sapphire  
448-591



**MATTE SATEEN**  
Tiger's Eye  
500-585



**MATTE SATEEN**  
Jasper  
500-566



**SHIMMER**  
Pink Topaz  
479-150



**SHIMMER**  
Crystal Lilac  
479-040



**SHIMMER**  
Rose Gold  
469-095



**SHIMMER**  
Bronze Age  
469-100



**GLITTER**  
Peach Sapphire  
469-057



**GLITTER**  
Fool's Gold  
469-076



**GLITTER**  
Ultramarine  
469-042

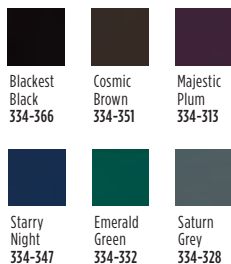
**MATTE SATEEN**  
Citrine  
451-120



# GLIMMER LINERS



Soft sheen finish.  
**fmg Glimmer Cream Eyeliner\***  
 Long-wearing. Retractable.  
 .01 oz. net wt. reg. \$9  
**\$4.99**



Starry Night  
334-347



Unique cap with built-in sharpener!  
**fmg Glimmer Always On Point Eyeliner\***  
 Smudge- and waterproof. Creamy, smooth formula stays color-true all day. Free from parabens, sulfates and talc. .01 oz. net wt. reg. \$9  
**\$6.79**



Black  
016-389



Subtle sparkle.  
**fmg Glimmer Diamond Eyeliner\***  
 Long-wearing. Retractable.  
 .01 oz. net wt. reg. \$9  
**\$4.99**



Teal Sparkle  
331-606



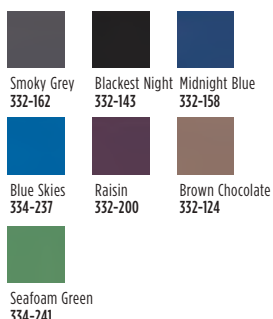
For natural-looking brows.  
**fmg Glimmer Brow Definer\***  
 Infused with nourishing castor oil, aiding in hair growth, and coconut oil. Smudge-, transfer-, sweat- and waterproof. Retractable. .01 oz. net wt. reg. \$9  
**\$4.99**



Brunette  
331-242



Smudge- and sweatproof.  
**fmg Glimmer Waterproof Eyeliner\***  
 Long-wearing. Retractable.  
 .01 oz. net wt. reg. \$9  
**\$4.99**



Midnight Blue  
332-158



Easy-glide, quick-dry precision felt-tip liner delivers rich color with long-lasting wear.  
**fmg Glimmer Liquid Eyeliner**  
 Matte finish. Removes with ease using soap and water or makeup remover. Transfer-, sweat- and waterproof. .037 fl. oz. **Blackest Black 354-380**  
 reg. \$12  
**\$9.99**

## GLIMMER NAIL



Rose Citrine  
843-057



Stolen Sapphire  
842-998



Smoky Quartz  
843-042

# FLEX YOUR METAL

**NEW**

Mani of the moment:  
matte metallics!

### fmg Glimmer Matte-Ilic Crystals Nail Lacquer

Innovative nail lacquer combines vibrant color with a matte crystal finish. Long-wearing formula dries quickly and provides a protective shield against chipping.

Free from parabens, toluene, formaldehyde and camphor. .4 fl. oz.

reg. \$10  
**\$7.99**

Rose Citrine  
843-057

Max shine and vivid color for a salon-worthy manicure that lasts!

### fmg Glimmer Nail Lacquer

Gel-like cushion texture. Nail-strengthening formula dries smooth and even for lasting wear that does not chip. No UV light needed. Free from parabens, talc, gluten, phthalates and fragrances.

.4 fl. oz.  
reg. \$10  
**\$7.99**



SATIN  
Black Hole  
Burgundy  
740-648



SATIN  
Night Sky  
Berry  
740-629



SATIN  
Supernova  
Red  
740-633



SATIN  
Lost Galaxy  
Plum  
740-614



SATIN  
Full Moon  
Flush  
740-671



SATIN  
Cool  
Comet  
740-667



SATIN  
Lunar Tan  
740-652



SATIN High  
Magnitude  
Mauve  
740-781



METALLIC  
Meteorite  
Rose  
740-800



METALLIC  
Golden  
Galaxy  
740-796



SATIN  
Night Sky  
Berry  
740-629

# GLIMMER

Get mistake-free manis at home.

## fmg Glimmer Nail Lacquer Eraser Pen

Glide over nail edges after applying nail lacquer for a clean and perfected manicure. .135 fl. oz.

**704-443**

reg. \$10

**\$7.49**



Creamy formula for cheeks and lips.

## fmg Glimmer Be Blushed Cheek Color

Glides on smoothly without streaking for a natural flush of color. Buildable coverage. Soft dewy finish. With skin-nourishing vitamin E for antioxidant benefits. Free from parabens, phthalates and fragrance. .14 oz. net wt.

reg. \$14

**\$10.99**

Blushing Nude  
022-911



Icy Petal  
022-854



Blushing  
Nude  
022-911



Golden  
Rose  
022-840



Tropical  
Peach  
022-964



Crushed  
Berry  
022-945

Subtle yet eye-catching radiance.

## fmg Glimmer Powder Illuminator

Finely milled powder creates a multi-dimensional luminous glow instantly. Lightweight buildable formula with vitamin E builds and blends effortlessly, providing a naturally radiant finish. Free from parabens, phthalates and fragrance.

.35 oz. net wt. reg. \$14

**\$9.99 each**

Rosé  
463-628



Rosé  
463-628



Prosecco  
905-580

Instant pop of color.

## fmg Glimmer Powder Blush

Richly pigmented, silky pressed powder hugs cheeks. Weightless formula with ultrafine pearls for added dimension and vivid payoff blends effortlessly. Buildable coverage and soft matte finish. With skin-nourishing vitamin E for antioxidant benefits. Free from parabens, phthalates and fragrance.

.28 oz. net wt.

reg. \$14

**\$9.99**

Petal Pink  
618-209



Petal Pink  
618-209



Pink Passion  
618-213

# CATHYCAT

Create a sultry cat-eye look with this rich, long-wearing liquid liner.

## fmg CathyCat Nine Lives Precision Liquid Eyeliner

Slim-tip brush delivers a precise line of waterproof and sweat-proof color that will not skip, tug or smudge. .068 fl. oz.

**Blackest Black**  
800-829  
reg. \$18  
**\$14.99**



Perfectly designed false lashes add length, dimension and volume.

## fmg CathyCat LushLashes

Vegan. Includes one pair of false lashes and glue. Available in two flirty styles! reg. \$11  
**\$8.99 each**



Soft & Sultry  
959-304

Fierce & Flared  
960-050

No-budge, water-resistant lashes, from dawn to dusk.

## fmg CathyCat Play All Day Mascara

Long-wearing mascara coats each lash with rich pigments that will not budge or smudge for nine lives of perfect wear. Nourishing formula with a blend of conditioning coconut and argan oils and lash-supporting panthenol. Removes easily with soap and water. .28 oz. net wt.

**Blackest Black**  
904-712  
reg. \$17  
**\$13.99**



Lengthen, curl and captivate!

## fmg CathyCat Curl & Flare Mascara

Long-lasting mascara applies evenly. Uniquely curved brush provides major lift, extraordinary curl and impressive length. Nourishing formula with a blend of conditioning coconut and argan oils and lash-supporting panthenol. .28 oz. net wt.

**Blackest Black**  
901-269  
reg. \$17  
**\$13.99**



Take your brow game to new heights!

## fmg CathyCat High Arch Precision Brow Pencil

Long-wearing cream-to-powder pencil glides on smoothly, creating a well-defined look. Waterproof formula stays in place without budging or smudging for perfectly gorgeous brows. .01 oz. net wt. reg. \$15

**\$11.99**



Light Brown  
837-438

Ash Brown  
837-610



Brown  
837-442

Black Brown  
837-639



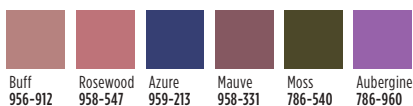
Brown  
837-442

Matte shadow stick colors and defines for all-day play.

## fmg CathyCat Shadow Gaze Matte Color Stick

Comfortable, long-wearing formula provides the perfect amount of playtime for blending and building color intensity. Once the shade sets, it will not budge or smudge. .0476 oz. net wt. reg. \$17

**\$13.99**



Buff  
956-912

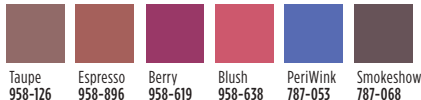
Rosewood  
958-547

Azure  
959-213

Mauve  
958-331

Moss  
786-540

Aubergine  
786-960



Taupe  
958-126

Espresso  
958-896

Berry  
958-619

Blush  
958-638

PeriWink  
787-053

Smokeshow  
787-068

Rosewood 958-547



## GLOKOLOR Clean. Vegan. Hydration.

Rich serum  
pampers lips.

### fmg GLOKOLOR Lip Serum Pencil

Infused with a burst of peppermint oil, a nourishing lip booster complex and argan oil. Lips feel smooth and refreshed. Free from parabens and fragrance.

.06 oz. net wt.

787-508 reg. \$20

\$16



Ultrafine water-based  
formula awakens skin  
while locking makeup  
in place.

### fmg GLOKOLOR Hybrid Face Mist

Spritz it anytime, anywhere for an instant boost of moisture to refresh skin. With aloe vera, agave and algae extracts to help soothe and nourish the complexion. Dermatologically tested. Free from parabens and sulfates. 2.7 fl. oz.

787-599

reg. \$24

\$20



Prep step with  
instant boost  
of moisture!

### fmg GLOKOLOR Hybrid Face Primer

Light, breathable formula softens the appearance of imperfections while creating a flawless canvas for makeup. With aloe vera, agave and algae extracts to help soothe and nourish the complexion. Dermatologically tested. Free from parabens and sulfates.

1 fl. oz.

787-637

reg. \$24

\$20





## CASHMERE FACE

Nougat (W) 126-107		
Marshmallow (N) 131-849	Macadamia (W) 136-525	Ganache (WO) 136-889
Cappuccino (N) 136-893	Chai (WO) 136-559	Toasty (N) 139-027
Praline (N) 141-406	Tiramisu (W) 137-278	Soufflé (N) 139-730
Muffin (W) 142-307	Gingerbread (C) 142-311	Pudding (N) 146-097
Amaretto (N) 146-188	Latte (W) 147-480	Brownie (WO) 147-461
Hazelnut (W) 147-495	Cognac (W) 147-681	Pecan (N) 149-699
Java (W) 149-722	Clove (N) 149-756	Truffle (C) 150-263

Featured shade:  
24 Hour Foundation In Java.

Good Housekeeping Magazine  
2021 Beauty Award Winner.

**fmg Cashmere 24 Hour Foundation\***  
24 hours of comfortable, breathable wear.  
Full, flexible coverage. Soft-focus matte finish.  
Visibly blurs pores and fine lines for a smoother  
complexion. With antioxidant botanical extracts.  
Water-resistant. Vegan. 1 fl. oz. **reg. \$32**  
**\$24.50**

\*Available in Cool (C),  
Neutral (N), Warm (W)  
and Warm Olive (WO) undertones.

\*\*Available in Cool (C), Neutral (N) and  
Warm (W) undertones.

Enjoy special prices and  
offers with an Avon account  
or Representative.



## CASHMERE FACE luxury in the shade of you

2-in-1 powder can be worn wet or dry.

### fmg Cashmere Compact Powder Foundation\*\*

Use as foundation or setting powder. Buildable medium-to-full coverage. Soft-focus matte finish. Amino-acid-coated pigments control shine. With collagen, lavender oil, and artichoke and chamomile extracts. Includes mirror compact and sponge. .40 oz. net wt. **reg. \$36**

**\$30**



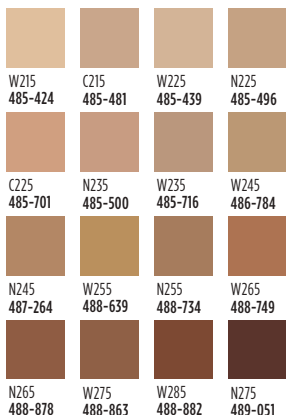
N150  
111-658

Velvety soft-matte color.

### fmg Cashmere Cushion Foundation\*\*

Enriched with soothing calendula extract, moisturizing squalane and skin-brightening niacinamide. Helps to cover the look of imperfections. Light-to-medium coverage. Includes sponge puff applicator. Free from parabens, phthalates and fragrance. .42 oz. net wt. **reg. \$27**

**\$24.50**



W275  
488-863

24 hours of comfortable, breathable wear.

### fmg Cashmere 24 Hour Concealer\*

Full coverage. Soft-focus matte finish. Visibly corrects dark circles and imperfections. With antioxidant botanical extracts. Water-resistant. .20 fl. oz.

**reg. \$22**

**\$16**



Toffee (W)  
123-662



Packaging may vary.



**FREE**

**fmg Oil Rewind Roller Ball**, with any \$30 Cashmere face or eye purchase, pages 96–99. \$16 value. Sold separately on page 102. Limited quantities.



## CASHMERE EYE

Expertly curated 9-shade palettes to create an array of looks.

### **fmg Cashmere Eyeshadow Palette**

Long-wearing creamy powder shadows in satin, matte and sparkling finishes. Crease- and smudge-proof. Talc-, paraben- and fragrance-free. .63 oz. total net wt. reg. \$40

**\$33 each**



Enchanted Eyes  
401-440



Essential Eyes  
404-745

Essential Eyes  
404-745

# CARESS OF CASHMERE



## CASHMERE EYE

Intense, decadent black shades with dazzling jewel undertones for dramatic results.

### fmg Cashmere 24 HR Cream Eyeliner

Comfortable kohl formula with 24-hour wear. Waterproof, matte finish. Smudge applicator to blend. Vegan. Paraben-, phthalate- and fragrance-free. .04 oz. net wt.

reg. \$18  
\$15



Midnight  
566-830



Midnight 566-830  
Nightfall 565-451

Rich black pigmented formula with extreme staying power.

### fmg Cashmere Ultimate Volume Mascara

Leaves lashes feeling soft. Won't budge, smudge or transfer. Triple sphere brush hugs lashes. Removes easily. Vegan. .27 fl. oz.

**Rich Black 153-736**  
reg. \$22  
\$18



Fills in brows as it boosts color.

### fmg Cashmere 24 Hour Brow Pomade

Smudge-proof, sweat-proof formula. Matte finish. Comes with dual-ended applicator with angled-tip brush and spoolie, 4 1/2" L. .14 oz. net wt.

reg. \$24  
\$20



Light Brown  
423-705



Blonde 423-710  
Light Brown 423-705



Brown 423-356  
Ash Brown 423-208



Dark Brown 423-227  
Black Brown 423-212

Smother, brighter, flawless-looking eyes.

### fmg Cashmere Under Eye Primer

Helps concealer wear all day. Infused with caffeine, green tea extract and vegan collagen to help diminish the appearance of dark circles, puffiness and fine lines. Free from parabens, phthalates and fragrance.

.317 oz. net wt.  
010-429 reg. \$22  
\$18



## MATCH MAKEUP

Primes, protects and perfects.

### fmg Match Prime Face Perfector

Flaw-blurring mattifying primer with SPF 20. Shine-defying microspheres visibly minimize pores and fine lines. Sheer breathable coverage suitable for all skin tones. Soft-focus matte finish. Free from oil and parabens.

1 fl. oz.  
932-377  
reg. \$14  
**\$11.49**



Camouflage imperfections.

### fmg Match Wand Correcting Stick

Minimizes skin concerns without creasing or caking! With shea butter and vitamin E. Free from parabens, phthalates and sulfates.

.21 oz. net wt. reg. \$16  
**\$12.99**



Pistachio: neutralizes redness 726-770



Gelato: brightens dullness 726-785



Sherbet: neutralizes dark circles and marks 726-790

Pistachio 726-770



Conceal + Contour + Highlight

### fmg Match Wand Foundation Stick

Instantly blurs and perfects skin. Helps to control oil and shine. Full and flexible all-over coverage in a demi-matte finish. Water-resistant. With shea butter and antioxidant vitamin E. Perfect for easy touch-ups. Free from parabens, sulfates and phthalates. Vegan.

.21 oz. net wt.  
reg. \$16  
**\$12.99**

Truffle (C) 596-297

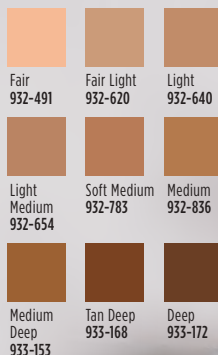


Instantly hydrates, blurs and evens tone!

### fmg Match Filter Serum Tint Foundation

Infused with hyaluronic acid, vitamin E and a berry complex. Demi-matte powder finish. Buildable sheer-to-medium coverage. Suitable for all skin types. Includes sponge applicator. Free from talc, parabens and fragrance. .31 oz. net wt.

reg. \$18  
**\$14.99**



Soft Medium  
932-783



Available in Warm (W), Neutral (N) and Cool (C) undertones.



Mineral-infused loose powder and brush in one!

**fmg Match Set Finishing Powder To-Go**  
Creates an invisible veil that controls shine and sets makeup. Lightweight formula diffuses light and visibly blurs pores and fine lines. Silky-soft matte finish never looks cakey. Free from talc, parabens and fragrance. .09 oz. net wt. **227-063**  
reg. \$19  
**\$14.99**



Creates an invisible veil that controls shine and sets makeup.

**fmg Match Set Finishing Powder**  
Lightweight mineral-infused loose powder formula diffuses light and visibly blurs pores and fine lines. Silky-soft matte finish never looks cakey. Includes puff applicator. Free from talc, parabens and fragrance. .22 oz. net wt.  
**932-472**  
reg. \$17  
**\$13.99**



Helps control oil and create a shine-free canvas.

**fmg Match Blur Oil Control Primer Balm**  
Sheer mattifying formula. Special blurring powder microspheres help reduce the look of fine lines and pores. With nutmeg extract for antioxidant benefits. Includes sponge applicator. Free from talc and parabens. .59 oz. net wt.  
**932-381**  
reg. \$19  
**\$15.99**



Blend of ultrafine rose quartz, ruby and tourmaline.

**fmg Match Dust Finishing Powder**  
Weightless loose mineral powder diffuses light, visibly blurs pores and controls shine. Soft matte finish. Includes no-spill twist-and-lock sifter. Free from talc, oil and parabens. .21 oz. net wt. **reg. \$17**  
**\$13.99**

Translucent Fair-Light  
594-720

Translucent Medium-Deep  
594-768



Translucent  
Medium-Deep  
594-768

Helps camouflage as it corrects and brightens.

**fmg Match Corrector Brightening Perfector**  
Creamy veil of color helps blur flaws and reduce the appearance of fine lines, dark circles and blemishes. Buildable sheer-to-medium coverage with a demi-matte finish. Free from talc, parabens, sulfates, alcohol and fragrance. .11 oz. net wt.  
**reg. \$13**  
**\$9.99**

Fair-Light  
932-396

Medium  
932-415

Tan-Deep  
932-434



Medium  
932-415

## MAKEUP MUST-HAVES

### fmg Vanity Organizer

Makeup-theme print. Four compartments with two removable inside dividers, three outer pockets and lattice elastic straps. Folds for easy storage. 9½" L x 6" W x 5" H. Polyester. Imported.

**022-816 reg. \$30**  
**\$22.99**



**NEW**

### fmg Set & Fix Spray

Lightweight formula controls oil and creates a protective shield, keeping makeup smudge-proof and looking fresh all day. Conditions and smooths skin. Ultrafine mist dries quickly to an invisible finish. Non-greasy, non-sticky. Free from parabens, sulfates, phthalates and silicones.

1.7 fl. oz. **416-707**  
**reg. \$15**  
**\$9.99**



### fmg Makeup Remover Wipes

Formulated with antioxidant vitamin E and an extract blend of aloe, chamomile, cucumber, marshmallow root and soothing oat. Leaves skin feeling soft and clean. Fragrance-free. Resealable pack of 24 wipes.

**333-867 reg. \$9**  
**\$7.49 each**



### fmg Oil Rewind Roller Ball

Reusable 360° rotating volcanic-stone roller instantly absorbs oil and grease. Control shine throughout the day without disturbing makeup. Ideal for touching up makeup on the go. Clean after each use. 1" W x 3" H. Plastic handle, protective cap. Imported.

**508-294**  
**reg. \$16**  
**\$12.99**



### fmg Moisturizing Eye Makeup Remover Lotion

Cleans, refreshes and moisturizes around the delicate eye area as it whisks away makeup.

2.5 fl. oz.  
**543-272**  
**reg. \$8**  
**\$5.99**



### fmg Express Makeup Brush Wash

Alcohol-free formula. Contains soothing aloe vera and green tea extract. Bristles are left conditioned with no leftover residue.

1 fl. oz. **141-368**  
**reg. \$12**  
**\$9.99**



### fmg Waterproof Lip & Eye Makeup Remover

Dual-layer oil and water remover leaves skin fresh and clean. Mineral-, talc- and paraben-free.

3.7 fl. oz.  
**352-243**  
**reg. \$12**  
**\$7.99**



## DUAL-ENDED BRUSHES & MORE

### fmg Kabuki Brush

With soft, angled bristles to effortlessly blend pressed or loose powder formulas. Retractable.

Cap keeps the brush head safely covered when not in use.  
3 3/4" L x 1" diam.

**732-370**  
reg. \$16  
**\$13.99**



### fmg Flawless Complexion Sponge

With a full rounded bottom for all-over makeup application and blending, and flat side for contouring, highlighting and concealing.

2 1/2" L x 1 1/2" W.  
100% PU,  
latex-free.

**140-160**  
reg. \$9  
**\$6.99**



### fmg Unready Makeup Remover Cloth

Dual-sided cloth makes makeup removal quick and easy. Gently exfoliates skin. 100% polyester. 9 7/8" sq. Machine wash and dry. Imported.

**230-176**  
reg. \$12  
**\$9.99**



### fmg Eyeshadow Blending Brush

With a soft, domed crease brush on one end and a flattened, all-over eyeshadow brush on the other to apply and buff eyeshadow. 6" L.

**933-320**  
reg. \$14  
**\$10.99**



### fmg Complexion Blending Brush

With a dense, rounded buffing foundation brush on one end and a precise, rounded concealer brush on the other to create a flawless canvas. 6 1/2" L.

**933-210** reg. \$21  
**\$16.99**



### fmg Blush & Contour Brush

With a tapered, oval blush brush on one end and a fluffy, angled contour brush on the other to add color and dimension.

7 1/4" L. **933-259**  
reg. \$20  
**\$15.99**



### fmg Precision Eye Brush

With an angled eyeliner brush on one end and a pointed pencil brush on the other to highlight or add depth to eyes. 5 1/4" L.

**933-187**  
reg. \$14  
**\$10.99**



# Far Away

A wanderlust for the exotic.





**Far Away  
amber floral***Top:* Bergamot,  
Freesia, Peach*Mid:* **Jasmine Absolute,**  
Ylang-Ylang,  
Orange Blossom*Dry:* Vanilla Absolute,  
Musk, **Enticing Amber****Original  
Eau de Parfum**  
1.7 fl. oz.  
**685-712**  
reg. \$25  
**\$18.99****Intense  
Eau de Parfum**  
1.7 fl. oz.  
**931-332**  
reg. \$31  
**\$25.99****Shimmering  
Body Mist**  
3.25 fl. oz.  
**618-945**  
reg. \$20  
**\$15.99****Hair & Body Mist**  
3.25 fl. oz.  
**572-536**  
reg. \$16  
**\$11.99****Intense Luxury  
Body Crème**  
5 fl. oz.  
**806-300**  
reg. \$23  
**\$18.99**Enjoy special prices and offers with  
an Avon account or Representative.**FREE****Vellment Himalaya Pink Salt Exfoliating Soap**  
with any \$25 fragrance purchase, pages 105 thru 125. \$8 value.  
Sold separately on page 143. Limited quantities.

FAR AWAY a world full of infinite possibilities



**Far Away Ball  
Eau de Parfum**  
*fruity floral*  
Sparkling grapefruit,  
salted tuberose and  
golden amber.  
1.7 fl. oz.  
**451-389**  
reg. \$25  
**\$18.99**



**Far Away Infinity  
Eau de Parfum**  
*fruity floral*  
Radiant bergamot,  
jasmine sambac and  
sensual sandalwood.  
1.7 fl. oz.  
**318-481**  
reg. \$25  
**\$18.99**



**Far Away Gold  
Eau de Parfum**  
*amber floral*  
Ylang-ylang,  
Indian jasmine and  
Madagascar vanilla.  
1.7 fl. oz.  
**685-727**  
reg. \$25  
**\$18.99**

## FRAGRANCE SETS save on all your faves



### SET INCLUDES:

**Far Away Eau de Parfum**  
*amber floral*  
Freesia, sheer jasmine and enticing amber. 1.7 fl. oz.

**Far Away Roll-On Anti-Perspirant Deodorant**  
2.6 fl. oz.

**Candid Cologne**  
*amber floral*  
Bergamot, tuberose and patchouli. 1.7 fl. oz.

**3-PIECE SET**  
**\$22.99**  
**OVER \$46 VALUE**  
525-467



### SET INCLUDES:

**Far Away Bali Eau de Parfum**  
*fruity floral*  
Sparkling grapefruit, salted tuberose and golden amber. 1.7 fl. oz.

**Far Away Roll-On Anti-Perspirant Deodorant**  
2.6 fl. oz.

**Candid Cologne**  
1.7 fl. oz.

**3-PIECE SET**  
**\$22.99**  
**OVER \$46 VALUE**  
527-201



### SET INCLUDES:

**Far Away Gold Eau de Parfum**  
*amber floral*  
Ylang-ylang, Indian jasmine and Madagascar vanilla. 1.7 fl. oz.

**Far Away Roll-On Anti-Perspirant Deodorant**  
2.6 fl. oz.

**Candid Cologne**  
1.7 fl. oz.

**3-PIECE SET**  
**\$22.99**  
**OVER \$46 VALUE**  
526-076

# lush layers

your favorite scent, anytime, anywhere.



**NEW**

**LIMITED EDITION**

**Intense Parfum Stick**

Take your signature scent to go! Purse- and travel-friendly, no-mess solid formula delivers the same fragrance impression as an eau de parfum. Easy glide-on application. Leaves no residue, melts quickly into skin. Each, .11 oz. net wt.

**Haiku Intense 184-165**

**Rare Pearls Intense 184-184**

**Far Away Intense 184-170**

reg. \$23

**\$19.99 each**

## HAIKU serene. divine. elegant.

### Haiku

#### *fresh green floral*

Japanese yuzu, delicate  
muguet and blonde woods.

#### Original Eau de Parfum

1.7 fl. oz. **601-030**

reg. \$25

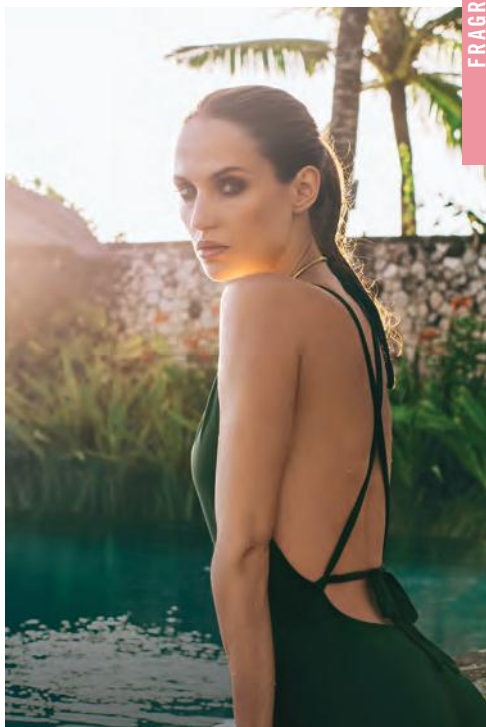
**\$18.99**

#### Hair & Body Mist

3.25 fl. oz. **572-574**

reg. \$16

**\$11.99**



FRAGRANCE

#### Intense Eau de Parfum

1.7 fl. oz. **097-110**

reg. \$31

**\$25.99**

#### Intense Travel Spray

.3 fl. oz. **880-353**

reg. \$16

**\$12.99**



#### Intense Luxury Body Crème

5 fl. oz. **806-239**

reg. \$23

**\$18.99**



## HAIKU a serene garden of pure bliss



**Haiku Kyoto Flower**  
*fresh green floral*  
Violet leaf, white peony  
and soft cotton musk.

**Original**  
**Eau de Parfum**  
1.7 fl. oz.  
144-352  
reg. \$25  
**\$18.99**

**Intense**  
**Eau de Parfum**  
1.7 fl. oz.  
578-811  
reg. \$31  
**\$25.99**



**Haiku Sacred Intense**  
**Eau de Parfum**  
*fruity floral*  
Discover a divine blend  
of uplifting tangerine,  
rose de mai and  
earthy driftwood.  
1.7 fl. oz.  
579-750  
reg. \$31  
**\$25.99**



**Haiku Reflection**  
**Eau de Parfum**  
*fresh green floral*  
Radiant water accord,  
acacia blossom and  
amber wood.  
1.7 fl. oz.  
617-657  
reg. \$25  
**\$18.99**



## RARE a treasure beyond compare

### Rare Pearls

#### *soft floral*

Shimmering magnolia, white pepper and creamy rosewood.

#### Eau de Parfum

1.7 fl. oz.

**761-615**

reg. \$25

**\$18.99**

#### Hair & Body Mist

3.25 fl. oz.

**572-851**

reg. \$16

**\$11.99**



### Rare Gold Intense

#### Eau de Parfum

#### *amber floral*

Opulent notes of mandarin zest, ylang-ylang and golden amber.

1.7 fl. oz.

**784-126**

reg. \$31

**\$25.99**



### Rare Amethyst

#### Eau de Parfum

#### *fruity floral*

Passionate plum, blooming violet and rich sandalwood.

1.7 fl. oz.

**933-062**

reg. \$25

**\$18.99**





**Imari Amor**  
*woody floral*

*Top:* Mandarin, Lychee,  
**Black Currant**, Green Notes

*Mid:* Rose, Jasmine, Neroli,  
Ylang-Ylang, **Precious Orris**

*Dry:* Sandalwood, Amber,  
Patchouli, **Warm Musk**

**Eau de Parfum**  
1.7 fl. oz.  
**762-573**  
reg. \$25  
**\$17.99**



**Imari**  
**Eau de Toilette**  
*amber floral*

Italian bergamot,  
tempting jasmine  
and amber.

1.7 fl. oz.  
**871-496**  
reg. \$25  
**\$18.99**



**Imari Seduction**  
**Eau de Toilette**  
*amber floral*

Wild berries,  
hypnotic purple  
orchid and patchouli.

1.7 fl. oz.  
**452-897**  
reg. \$25  
**\$18.99**





# RÊVE EN CUBE

Explore an enchanting space where fantasy blooms, romance is uninhibited and true beauty comes to life.

## **Rêve en Cube** **Letter from the Stars** **Eau de Parfum** *fruity floral*

The stars beam brightly against the evening sky, guiding you to a dreamy world that shines with fragrant sparkling notes.

3.4 fl. oz. **809-238**

reg. \$70

**\$59**

*Top:* **Radlant Grapefruit,**  
Lemon

*Mid:* **Sweet Gardenia,**  
Jasmine

*Dry:* **Fuzzy Peach,**  
Balsamic



## **Rêve en Cube** **Misty Green Eau de Parfum** *soft floral*

Get lost in a field of dreams, where lush greenery is surrounded by uplifting notes, creating a serene escape.

3.4 fl. oz.

**850-863**

reg. \$70

**\$59**

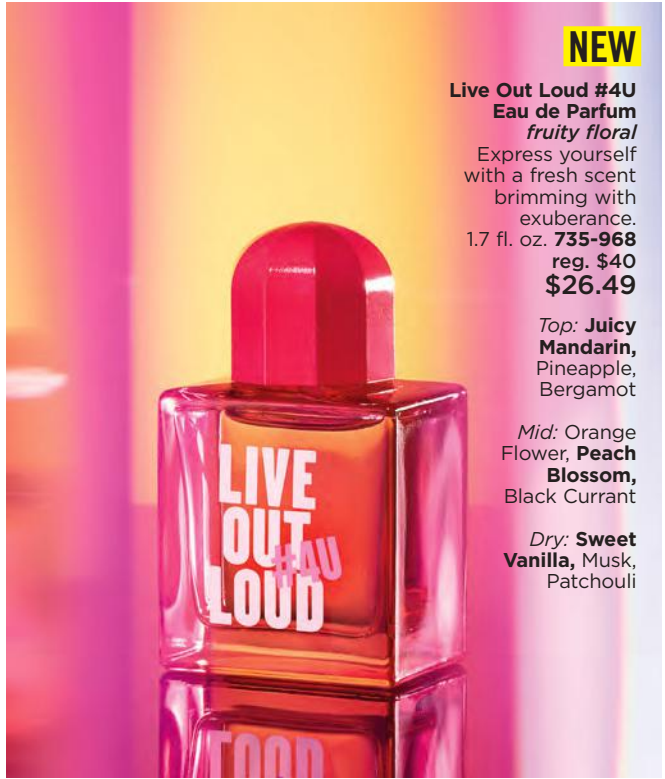
*Top:* **Bergamot,**  
Grapefruit,  
Mandarin,  
Lemon

*Mid:* **Neroli,**  
Jasmine,  
**Lily of the Valley**

*Dry:* **White Musk,**  
Vetiver,  
Amber Wood



IT'S YOUR  
LIFE  
OWN IT



**NEW**

**Live Out Loud #4U**  
**Eau de Parfum**  
*fruity floral*

Express yourself  
with a fresh scent  
brimming with  
exuberance.

1.7 fl. oz. **735-968**  
reg. \$40  
**\$26.49**

*Top:* **Juicy**  
**Mandarin,**  
Pineapple,  
Bergamot

*Mid:* Orange  
Flower, **Peach**  
**Blossom,**  
Black Currant

*Dry:* **Sweet**  
**Vanilla,** Musk,  
Patchouli



**Live Out Loud**  
**Eau de Parfum**  
*fruity floral*

A free-spirited  
expression of sweet  
wild strawberry,  
sparkling mimosa  
and comforting  
fluffy vanilla.

1.7 fl. oz.  
**142-000**  
reg. \$40  
**\$26.49**





Leaves skin feeling soft, silky and beautifully scented, with no greasy residue!

**NEW**

**Dry Oil Spray**

Fast-absorbing lightweight nourishing oil replenishes moisture instantly. Use on damp skin for the perfect post-shower glow. Each, 3.25 fl. oz.

**Today soft floral**

Magnolia blossoms, hibiscus petals and silk musk. **463-886**

**Avon Prima amber floral**

Delicate plum, pink rose and white patchouli. **463-910**  
reg. \$22  
**\$17.99 each**



**Today  
Eau de Parfum  
soft floral**

Magnolia blossoms, hibiscus petals and silk musk. 1.7 fl. oz.  
**325-920**  
reg. \$30  
**\$26.49**

L I V E

Y O U R

D R E A M

**Avon Classics  
Dreamlife  
soft floral**

A magical blend perfect  
for every fantasy.

*Top:* **Mimosa Flower,**  
Hyacinth, Apricot

*Mid:* **Aspirational Rose,**  
Ylang-Ylang, Vanilla

*Dry:* Patchouli,  
Sandalwood,  
**Glowing Amber**

**Cologne**  
1.7 fl. oz.  
**236-227**  
reg. \$18  
**\$13.49**



ALWAYS  
BEAUTIFUL

**Timeless Cologne**  
*soft floral*  
Cardamom, jasmine  
and patchouli.  
1.7 fl. oz.  
**037-930**  
reg. \$18  
**\$13.49**



**Topaze Cologne**  
*soft floral*  
Jasmine, rose  
and sheer musk.  
1.7 fl. oz.  
**735-217**  
reg. \$18  
**\$13.49**



**Night Magic Cologne**  
*woody floral*  
Neroli, jasmine  
and musk.  
1.7 fl. oz.  
**168-682**  
reg. \$18  
**\$13.49**



**Sweet Honesty Cologne**  
*soft floral*  
Lily of the valley,  
rose and cedarwood.  
1.7 fl. oz.  
**037-595**  
reg. \$18  
**\$13.49**



**Odyssey Cologne**  
*soft floral*  
Tuberose,  
ylang-ylang and  
warm oakmoss.  
1.7 fl. oz.  
**168-697**  
reg. \$18  
**\$13.49**



**Free O<sub>2</sub>**  
**Eau de Toilette**  
*fresh green floral*  
White peach tea,  
airy honeysuckle  
and musk.  
1.7 fl. oz.  
**265-658**  
reg. \$18  
**\$13.49**



**Candid Cologne**  
*amber floral*  
Bergamot,  
tuberose and  
patchouli.  
1.7 fl. oz.  
**038-295**  
reg. \$18  
**\$13.49**



**LYRD Artisan Cannabis Oud Eau de Parfum**  
*fresh citrus*

Sweet pomelo, rich agarwood and earthy cannabis leaves. Contains .01% of CBD. This eau de parfum does not contain THC.  
1.7 fl. oz.  
254-544  
reg. \$60  
**\$49**



**LYRD Oud Rose**  
*woody floral*  
Spicy saffron, romantic rose and velvety patchouli.

**Eau de Parfum**  
1.7 fl. oz.  
954-412  
reg. \$38  
**\$32**

**Travel Spray**  
.3 fl. oz.  
448-496  
reg. \$21  
**\$17**



**LYRD Sparkling Neroli Eau de Parfum**  
*fresh citrus*

Sparkling neroli, bergamot and warm musk.  
1.7 fl. oz.  
572-521  
reg. \$36  
**\$29**



**LYRD Honeysuckle Blossom Eau de Parfum**  
*soft floral*

Apple blossom, honeysuckle nectar and vanilla orchid.  
1.7 fl. oz.  
616-282  
reg. \$24  
**\$20**



**LYRD Peony Rosé Eau de Parfum**  
*soft floral*

Peony petals, pink currant and sheer musk.  
1.7 fl. oz.  
616-210  
reg. \$24  
**\$20**



# Seasonal Delights

Get ready for the holidays!  
Apple picking, tree trimming  
and pumpkin pie, oh my!

## LIMITED EDITION

### ◆ LYRD Candle

Three-wick, 11 oz. candle gives 30 hours of burn time. 4 1/4" diam. x 3 1/8" H. Glass jar, paper dust cover, soy blend wax. Assembled in USA.

reg. \$25

**\$19.99 each**



### ◆ LYRD Enchanted Snowy Forest Candle

Take a magical walk in a winter wonderland as fresh snow falls and the air fills with notes of frost, pine and smoked woods. **082-069**

### ◆ LYRD Let's Go Apple Picking! Candle

Family fun time at the apple orchard! Delight in the aroma of cozy cinnamon, juicy red apple and crisp cashmere woods. **082-001**

### ◆ LYRD Sticky Cinnamon Goodness Candle

Yummy! Fluffy warm dough, drizzled with sinfully sweet cinnamon sugar and ooey-goey golden caramel. **082-020**

### ◆ LYRD Save Room for Pumpkin Coconut Pie Candle

Did someone say pie? A warm fall hug with notes of shredded coconut, creamy pumpkin puree and sweet vanilla bean extract. **082-054**

# MESMERIZE

**Mesmerize Ultimate**  
**Eau de Toilette**  
*woody fougère*  
Black pepper,  
zesty pomelo and  
sensuous patchouli.  
3.4 fl. oz. **897-030**  
reg. \$36  
**\$27.99**



# MESMERIZE

CAPTIVATE AT  
A SINGLE GLANCE

**Mesmerize Cologne**  
*fresh aromatic*  
Bergamot, spicy  
cardamom and amber.  
3.4 fl. oz.  
**871-458**  
reg. \$25  
**\$18.99**



**Mesmerize Black**  
**Eau de Toilette**  
*woody fougère*  
Pepper, addictive nutmeg  
and tonka bean.  
3.4 fl. oz.  
**305-667**  
reg. \$25  
**\$18.99**



**Mesmerize Platinum**  
**Ultimate Eau de Toilette**  
*woody floral*  
Crisp pear, violet  
and warm amber.  
3.4 fl. oz.  
**179-633**  
reg. \$36  
**\$27.99**





## FRAGRANCE SETS save on all your faves

---



**SET INCLUDES:**

**Mesmerize Cologne**  
*fresh aromatic*  
Bergamot, spicy cardamom and amber. 3.4 fl. oz.

**Perceive Cologne**  
*fresh aromatic*  
Sparkling citrus, sage and cedarwood. 3.4 fl. oz.

**2-PIECE SET**

**\$23.99**

**\$50 VALUE**

981-142

---



**SET INCLUDES:**

**Mesmerize Black Eau de Toilette**  
*woody fougère*  
Pepper, addictive nutmeg and tonka bean. 3.4 fl. oz.

**Perceive Cologne**  
3.4 fl. oz.

**2-PIECE SET**

**\$23.99**

**\$50 VALUE**

981-161

---



**SET INCLUDES:**

**Black Suede Eau de Toilette**  
*fresh aromatic*  
Bergamot, soft leather and oak moss. 3.4 fl. oz.

**Perceive Cologne**  
3.4 fl. oz.

**2-PIECE SET**

**\$20.99**

**\$47 VALUE**

980-768

---

# BLACK SUEDE ULTIMATE

EFFORTLESSLY COOL



**Black Suede  
Ultimate**  
*woody fougère*  
A dynamic blend of  
lemon, rich lavender  
and tonka bean.

**Eau de Toilette**  
3.4 fl. oz.  
792-412 reg. \$27  
**\$22.99**

**Body Moisturizer**  
6.7 fl. oz. 003-894 reg. \$19  
**\$14.99**

**Body Wash**  
6.7 fl. oz. 003-875 reg. \$19  
**\$14.99**

**Black Suede  
Eau de Toilette**  
*fresh aromatic*  
Fusion of bergamot,  
soft leather and  
oak moss.  
3.4 fl. oz.  
908-703  
reg. \$22  
**\$14.99**



**Black Suede  
Hair & Body Wash**  
5 fl. oz.  
366-318  
reg. \$8  
**\$3.99**



**Black Suede  
Aftershave  
Conditioner**  
3.4 fl. oz.  
367-238  
reg. \$8  
**\$3.99**



## MEN'S FRAGRANCES

**Studio 1886 Gentleman**  
*woody fougère*  
Dynamic blend of geranium, black pepper and cedarwood.

**Eau de Toilette**  
1.7 fl. oz. **708-750**  
reg. \$50  
**\$39**

**Aftershave Lotion**  
6.7 fl. oz. **708-927**  
reg. \$16  
**\$12.99**



**Studio 1886 Legendary**  
**Eau de Parfum**  
*woody fougère*  
Vibrant lemon, crisp lavender, patchouli and salted amber.  
1.7 fl. oz.  
**269-820**  
reg. \$50  
**\$39**



**Wild Country Cologne**  
*fresh aromatic*  
A rugged blend of lavender, coriander seed and sandalwood.  
3 fl. oz.  
**086-466**  
reg. \$22  
**\$14.99**



**Wild Country**  
**Hair & Body Wash**  
5 fl. oz. **364-080**  
reg. \$8  
**\$3.99**



**Wild Country**  
**Aftershave Splash**  
4 fl. oz.  
**366-432**  
reg. \$13  
**\$10.49**



**Perceive Cologne**  
*fresh aromatic*  
Sparkling citrus, sage and cedarwood.  
3.4 fl. oz.  
**194-550**  
reg. \$25  
**\$18.99**



**Avon Exploration**  
**Eau de Toilette**  
*fresh aromatic*  
Fresh orange, silver sage and vetiver.  
2.5 fl. oz.  
**593-666**  
reg. \$25  
**\$18.99**



## SCENTED ESSENTIALS

### Avon Classics Hand Cream

Moisturizing formula with jojoba seed oil and vitamin E. Leaves skin lightly scented. Each, 2.5 fl. oz.

**Sweet Honesty 234-789**

**Night Magic 235-440**

**Timeless 234-740**

reg. \$6

**\$3.99 each**



### Body Scrub & Wash

Gentle formula cleanses as it removes rough, dry skin. Skin is refreshed, smooth and beautifully scented. Each, 6.7 fl. oz.

**Haiku 143-208**

**Far Away 143-360**

reg. \$12

**\$9.99 each**



### Body Lotion

Luxurious moisturizer leaves skin soft and scented. Each, 6.7 fl. oz.

**Far Away 082-881**

**Rare Pearls 082-915**

**Haiku 447-820**

reg. \$10

**\$6.99 each**

# Creamy softness

**Perfumed Skin Softener**  
Moisturizing formula leaves skin soft and scented.

- Each, 5 fl. oz.
- Haiku **813-973**
- Candid **103-926**
- Far Away **812-981**
- Night Magic
- Evening Musk
- 104-129**
- Odyssey **104-171**
- Sweet Honesty
- 104-463**
- Timeless **104-478**
- Imari **818-239**
- reg. \$8
- \$3.99 each**



**Deodorant Stick**

All-day freshness in your favorite classic Avon scent! Nourishing formula glides on smoothly without leaving any residue. Lasting odor protection. Each, 1 oz. net wt.

- Wild Country 692-012**
- Black Suede 705-602**
- Rare Pearls 727-891**
- Haiku 727-906**
- reg. \$12
- \$9.99 each**

**Gentology Herb & Aloe All-Over Wash**  
For face, hair and body. With aloe and natural herbal extracts.  
10.1 fl. oz.  
**533-347**  
reg. \$16  
**\$13.65**

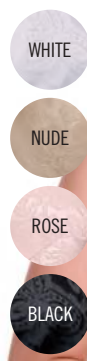


**Bar Soap**  
Moisturizes as it gently cleanses, leaving skin lightly fragranced.  
Each, 3.17 oz. net wt.  
**Black Suede 495-565**  
**Wild Country 495-570**  
reg. \$6  
**\$3.99 each**



**BALI®** shape-smoothing styles to contour your curves

Shown:  
Rose.



❖ **Bali® Satin Tracings® Minimzer Underwire Bra (3562)**

Back closure. Lightly lined.

Polyester/nylon/spandex.

Hand wash, line dry. Imported.

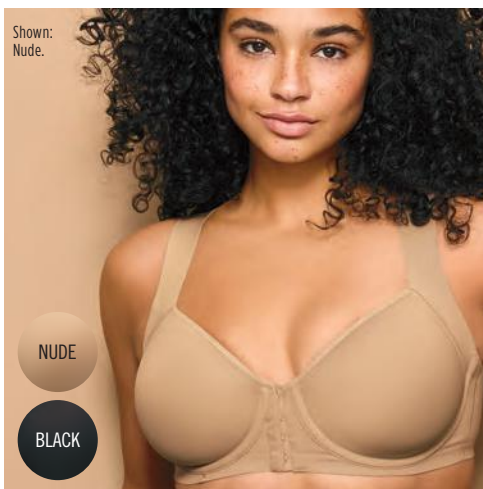
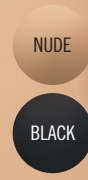
**White:** 34-48C,D,DD,DDD.

**Nude, Rose or Black:** 34-42C,D,DD,DDD.

reg. \$48

**\$36.99**

Shown:  
Nude.



❖ **Bali® One Smooth U® Posture Boost with EverSmooth™ Back Underwire Bra (DF3450)**

Designed for all-over back support and smoothing. Features breathable cups to help keep you cool and no-slip straps. Front closure. Nylon/spandex. Hand wash, line dry. Imported. Sizes: 36-44C,D,DD (all colors).

reg. \$48

**\$38.99**

Shown:  
White.



❖ **Bali® One Smooth U® Lace Minimzer Underwire Bra (DF3386)**

Minimizes up to 1½". Lightweight with sheer inserts. Full coverage. Power mesh provides extra cup support, opacity, back and side smoothing.

Adjustable, convertible straps. Hand wash, line dry. Imported. Nylon/spandex. **White,**

**Evening Blush or Black:** 34-42C,D,DD,DDD.

**Nightfire Red:** 36-40C,D,DD. reg. \$49

**\$39.99**

Shown:  
Taupe.



❖ **Bali® Comfort Revolution® EasyLite™ Breathable Racerback Bra (DF3499)**

Racerback pullover wirefree bra with mesh back. Cool Comfort® technology. Nylon/spandex. Hand wash, line dry. Imported.

Sizes: S, M, L, XL, 2XL, 3XL (all colors).

reg. \$48

**\$38.99**

- WHITE
- GENTLE PEACH
- NUDE
- SAND-SHELL
- CRYSTAL GREY
- BLUE VELVET
- BLACK



Shown: Sandshell.

❖ **Playtex® 18 Hour® Ultimate Lift and Support Wirefree Bra (4745)**  
 Nylon/polyester/cotton/spandex.  
 Hand wash, line dry. Imported. **White, Nude or Sandshell:** 36-42B; 36-44C,D; 38-46DD,DDD. **Gentle Peach, Crystal Grey, Blue Velvet or Black:** 36-40B; 36-44C,D; 38-44DD,DDD. **reg. \$39**  
**\$32.99**

Shown: Almond.

- WHITE
- PINK PIROUETTE
- ALMOND
- BLACK



❖ **Playtex® Ultra Soft Comfortflex Fit® Convertible Wirefree Bra (US4830)**  
 Wire-free comfort. Lightly lined. Adjustable straps. Lightweight and flexible. Back closure. Nylon/spandex. Hand wash, line dry. Imported. Sizes: S-3X (all colors).  
**reg. \$46**  
**\$36.99**

Shown: Nude Stripe.

- WHITE STRIPE
- NUDE STRIPE
- BLACK STRIPE



❖ **Playtex® Secrets® Perfectly Smooth® Underwire Bra (US4747)**  
 Smooths side and back bulges. 4-Way TruSUPPORT® design. Back closure. Lightly lined. Nylon/spandex/polyester/cotton. Hand wash, line dry. Imported. Sizes: 36-42B; 36-44C,D,DD; 36-42DDD (all colors).  
**reg. \$46**  
**\$37.99**

Shown: Nude.

- WHITE
- NUDE
- BLACK



❖ **Playtex® Smoothing Minimizer Wirefree Bra (US4697)**  
 Back closure. Lightly lined. Nylon/spandex. Hand wash, line dry. Imported. Sizes: 36-44C,D,DD,DDD (all colors).  
**reg. \$39**  
**\$33.99**

Playtex® is a registered trademark used under license.

## SKIN SO SOFT Botanical Essence / Original



**Botanical  
Essence Bath Oil**  
With nourishing  
botanical extracts.  
Uplifting herbal  
scent. 16.2 fl. oz.  
**027-253**  
reg. \$31  
**\$24.99**

### Original Bath Oil

Hydrates during  
or after bath  
or shower.

16.9 fl. oz.

**439-040**

reg. \$24

**\$16.99**



### Original Shower Gel

Gently cleanses  
and hydrates.

5 fl. oz.

**933-005**

reg. \$8

**\$5.19**



### Bonus-Size Original Body Lotion

33.8 fl. oz.

**336-043**

reg. \$20

**\$13.99**





**Bonus-Size Original Shower Gel**  
Gently cleanses and hydrates.  
33.8 fl. oz.  
**170-731**  
reg. \$18  
**\$13.99**



**Original Body Lotion**  
48 hours of moisture.  
11.8 fl. oz.  
**761-634**  
reg. \$11  
**\$7.69**



**Gelled Body Oil**  
Dries to a silky finish.  
6.76 fl. oz. **939-500**  
reg. \$13  
**\$8.69**

**Bath Oil Spray**  
Locks in hydration.  
5 fl. oz. **194-325** reg. \$14  
**\$9.29**

**Bonus-Size Bath Oil**  
Keeps skin hydrated after bath or shower. 25 fl. oz.  
**037-690** reg. \$30  
**\$21.69**



**Original Replenishing Hand Cream**  
24+ hours of moisturization.  
3.4 fl. oz.  
**941-268**  
reg. \$5  
**\$2.69**



**Original Beauty Bar Soap**  
Skin-nourishing bar soap.  
Creamy lather. Suitable for daily use on face, body and hands.  
3.17 oz. net wt. **543-110**  
reg. \$4.50  
**\$3.49**



# SKIN SO SOFT Soft & Sensual

**Bonus-Size  
Soft & Sensual  
Shower Gel**  
33.8 fl. oz.  
171-848  
reg. \$18  
**\$13.99**

**Soft & Sensual  
Body Lotion**  
11.8 fl. oz.  
934-312  
reg. \$11  
**\$7.69**

**Soft & Sensual  
Replenishing  
Hand Cream**  
3.4 fl. oz.  
867-315  
reg. \$5  
**\$2.69**

**Bonus-Size  
Soft & Sensual  
Body Lotion**  
33.8 fl. oz.  
336-062  
reg. \$20  
**\$13.99**



**Bonus-Size  
Soft &  
Sensual  
Bath Oil**  
25 fl. oz.  
862-920  
reg. \$30  
**\$21.69**



**Soft & Sensual  
Shower Gel**  
Gently  
cleanses  
and hydrates.  
5 fl. oz.  
435-600  
reg. \$8  
**\$5.19**



**Soft & Sensual  
Bath Oil**  
Hydrates  
during or  
after a bath  
or shower.  
16.9 fl. oz.  
504-614  
reg. \$24  
**\$16.99**



**Soft & Sensual  
Beauty Bar Soap**  
3.17 oz. net wt. 543-215  
reg. \$4.50  
**\$3.49**



**Soft &  
Sensual  
Gelled  
Body Oil**  
Dries to a  
silky finish.  
6.76 fl. oz.  
908-244  
reg. \$13  
**\$8.69**



**Soft & Sensual  
Antiperspirant  
Roll-On**  
2.6 fl. oz.  
714-861  
reg. \$3.60  
**\$2.69**



# SKIN SO SOFT

## Radiant Moisture Replenishing Hand Cream

3.4 fl. oz.  
941-272  
reg. \$5  
**\$2.69**



## Bonus-Size Radiant Moisture Body Lotion

33.8 fl. oz.  
337-346  
reg. \$20  
**\$13.99**



## Radiant Moisture Shower Gel

Gently cleanses and hydrates.  
5 fl. oz. 435-777  
reg. \$8  
**\$5.19**

## Bonus-Size Radiant Moisture Shower Gel

33.8 fl. oz.  
433-922  
reg. \$18  
**\$13.99**

## Radiant Moisture Bonus-Size Bath Oil

With argan oil. Peony and musk scent.  
25 fl. oz.  
249-788  
reg. \$30  
**\$21.69**



## Bonus-Size Supreme Nourishment Body Lotion

33.8 fl. oz.  
337-475  
reg. \$20  
**\$13.99**



## Comforting Shea Bath Oil

16.9 fl. oz.  
015-071  
reg. \$24  
**\$16.99**



## Supreme Nourishment Enriching Coconut Oil

Oil Wash  
11.8 fl. oz.  
933-703  
reg. \$15  
**\$9.99**



## Supreme Nourishment Enriching Coconut Oil Lip Balm

Coconut flavor.  
.14 oz. net wt.  
958-370  
reg. \$2  
**\$1.39**



## Fresh & Smooth Sensitive Skin

With meadowfoam oil and aloe. Fragrance-free.

## Facial Hair Removal Cream

1 fl. oz. 605-088 reg. \$10

## Body Hair Removal Cream

4.2 fl. oz. 923-448 reg. \$10

**\$5.99 each**



LET'S  
CLEAR  
SOME  
THINGS  
UP



developed for  
all skin types, with  
gently exfoliating  
salicylic acid



## Skin So Soft for Acne-Prone Skin

### FOR FACE

**A. Soothing Spot Gel**  
Skin looks radiant, even-toned. With rosemary, madecassoside and mint extracts. Leave on, dries clear. .5 fl. oz.  
**072-721 reg. \$18**  
**\$13.99**

**B. Foaming Cleanser**  
With plant-based scrub, rosemary, madecassoside and mint extracts. 5 fl. oz.  
**041-647 reg. \$17**  
**\$12.99**

### FOR BODY

**C. Soothing Gel**  
Helps visibly improve tone and texture. Cooling sensation. With glycerin, allantoin and panthenol. Leave on, dries clear. 6.1 fl. oz. **040-636**  
**reg. \$20**  
**\$15.99**

**D. Exfoliating Body Wash**  
Nondrying, nonirritating. With rosemary oil. 10.1 fl. oz. **041-556**  
**reg. \$20**  
**\$15.99**

**E. Gentle Body Wash**  
Nondrying, nonirritating. With rosemary oil. 10.1 fl. oz. **039-325**  
**reg. \$20**  
**\$15.99**

**F. Body Pads**  
Pre-soaked exfoliating cotton pads. Helps even tone. With hyaluronic acid and panthenol. 70 pads. **039-330**  
**reg. \$30**  
**\$24.99**

Suitable for daily use and free of synthetic fragrances.

## AVON SENSES Gratitude

### ❖ A. Candle

1 wick. Soy-wax blend. 3" diam. 3½" H. Burn time, 40 hours. 7 oz. net wt.

**504-686**

reg. \$23

**\$18.99**

Place candle on trivet or holder before lighting to protect furniture. Never leave burning candles unattended. Keep away from children and pets.

### B. Room Spray

Instantly refresh your home.

3.25 fl. oz.

**361-851**

reg. \$13

**\$10.99**

### C. Air Diffuser

Six diffuser reeds.

Fragrance oil, 2.37 fl. oz.

**504-724**

reg. \$30

**\$24.99**

### D. Bath Salts

Pour a handful under warm running water. With sea salt, glycerin and sunflower seed oil. Use 1-3 times a week. 12.5 oz. net wt.

**504-557**

reg. \$23

**\$18.99**

### E. Shower Steamers

Place one on shower shelf and activate with shower steam (avoid heavy stream of water). Each, 1 oz. net wt.

**504-428**

reg. \$26

**\$20.99**

six shower steamers

## AVON SENSES GRATITUDE LAVENDER & CEDARWOOD

Fill your space with the calming and soothing scents of lavender and cedarwood.



## SENSES Cozy Vanilla & Coconut



### A. Body Mist

With aloe vera extract, refreshes and leaves skin feeling soothed.  
8 fl. oz. **034-888**  
reg. \$18  
**\$14.99**

### B. Shower Gel

Moisturizing cleanser derived from coconut.  
10 fl. oz. **035-190**  
reg. \$17  
**\$13.99**

### C. Body Lotion

Smooths and softens with moisture-rich shea butter and vitamin E. 8 fl. oz.  
**035-152** reg. \$17  
**\$13.99**

### D. Hand Soap

With moisturizing glycerin, leaves hands feeling clean and soft.  
10.1 fl. oz. **852-081**  
reg. \$13.99  
**\$10.99**

### E. Hand Cream

With shea butter and antioxidants, leaves dry hands feeling buttery smooth.  
2.5 fl. oz. **015-029**  
reg. \$6  
**\$4.99**

### F. Body Scrub

Remove dry, dead skin while shea butter and olive and avocado oils help moisturize.  
9 oz. net wt.  
**530-314** reg. \$22  
**\$17.99**

## COZY VANILLA & COCONUT

Envelop yourself in a cozy cloud of comforting vanilla, creamy coconut and calming chamomile.

Free from parabens, mineral oil, silicone, phthalates and dyes.



## SENSES Fresh Bergamot / Sparkling Grapefruit



### Hand Cream

With shea butter and antioxidants.

2.5 fl. oz. **852-498** reg. \$6

**\$4.99**

### Hand Soap

With moisturizing glycerin.

10.1 fl. oz. **852-297** reg. \$13.99

**\$10.99**

### Shower Gel

Coconut-derived cleanser.

10 fl. oz. **034-873**

reg. \$17

**\$13.99**



### FRESH BERGAMOT & WILD MINT

A fresh bouquet of dewy flowers mixed with spicy bergamot, clean wild mint and luminous solar musk.

Free from parabens, mineral oil, silicone, phthalates and dyes.



### Hand Cream

With shea butter and antioxidants.

2.5 fl. oz. **852-120** reg. \$6

**\$4.99**

### Hand Soap

With moisturizing glycerin.

10.1 fl. oz. **852-115** reg. \$13.99

**\$10.99**

### Body Mist

With refreshing aloe vera extract.

8 fl. oz. **034-687**

reg. \$18

**\$14.99**



### SPARKLING GRAPEFRUIT & ORANGE BLOSSOM

A juicy mix of zesty grapefruit, bright orange blossom, delicate honeysuckle and luscious peach.



# SENSES Bubble Bath / Shower Gel



**Cherry Blossom Bubble Bath**  
Flirty and sweet.  
24 fl. oz.  
425-033  
reg. \$11  
**\$8.99**



**Vanilla Cream Bubble Bath**  
Rich and creamy.  
24 fl. oz.  
214-220  
reg. \$11  
**\$8.99**



**Cucumber Melon Bubble Bath**  
Fresh and sweet.  
24 fl. oz.  
688-950  
reg. \$11  
**\$8.99**



**Orange & Honeysuckle Bubble Bath**  
Fresh and sunny.  
24 fl. oz.  
047-808  
reg. \$11  
**\$8.99**



**Endless Ocean Bubble Bath**  
Marine and breezy.  
24 fl. oz.  
425-048  
reg. \$11  
**\$8.99**



**Lily & Honeysuckle Blossom Bubble Bath**  
Fragrant and refreshing.  
24 fl. oz.  
423-394  
reg. \$11  
**\$8.99**



**Soft Pink Bubble Bath**  
Lilac and rose.  
24 fl. oz.  
425-052  
reg. \$11  
**\$8.99**



**Sensitive Skin Bubble Bath**  
Chamomile scent.  
24 fl. oz.  
213-151  
reg. \$11  
**\$8.99**



**Lavender Garden Bubble Bath**  
Soft and serene.  
24 fl. oz.  
424-735  
reg. \$11  
**\$8.99**



**Blushing Cherry Blossom Hydrating Shower Gel**  
5 fl. oz.  
423-299  
reg. \$6  
**\$3.69**



**Silky Vanilla Hydrating Shower Gel**  
5 fl. oz.  
462-105  
reg. \$6  
**\$3.69**



**Fresh Cucumber & Melon Hydrating Shower Gel**  
5 fl. oz.  
462-071  
reg. \$6  
**\$3.69**



**Juicy Pomegranate & Mango Hydrating Shower Gel**  
5 fl. oz.  
462-139  
reg. \$6  
**\$3.69**



**Exfoliation Mitt**  
 Helps remove dead skin, and keeps skin feeling soft and smooth. Microfiber jacquard, with nylon spandex cuff.  
**439-734 reg. \$11**  
**\$8.99**



**Body Massager**  
 Helps stimulate circulation and relieve tension in muscles, especially in back and limbs. Fits into palm for easy control and flexibility with customizable pressure.  
**439-920 reg. \$11**  
**\$8.99**



**Smooth Moves Anti-Cellulite Massager**  
 Use with gel to help firm and smooth skin. Rotating rollers help promote circulation and reduce the appearance of cellulite. Plug-in device. **011-296** reg. \$70  
**\$62.99**



**Smooth Moves Anti-Cellulite Cooling Gel**  
 L-carnitine and chai hu help target fat cells.  
 6.7 fl. oz. **722-722** reg. \$21  
**\$12.99**



**Affirm Yourself Firming Body Cream**  
 Caffeine complex helps skin look more toned.  
 6.7 fl. oz. **522-970** reg. \$21  
**\$12.99**



# recharge

**Avon Aromatherapy Body Lotion Bright Day Ahead**

Charge your day with positive energy. With citrus and ginger fragrance oils to uplift your mood. 5.8 fl. oz. **584-670** reg. \$17 **\$13.99**



# refresh

**Avon Aromatherapy Body Lotion Bye-Bye Stress**

Take a moment to de-stress. With refreshing spearmint and eucalyptus fragrance oils for stress relief and mental clarity. 5.8 fl. oz. **584-684** reg. \$17 **\$13.99**



# relax

**Avon Aromatherapy Body Lotion Sleep Tight Zzz**

Unwind after a long day. With rose and lavender fragrance oils to help promote a restful sleep. 5.8 fl. oz. **584-866** reg. \$17 **\$13.99**



**Avon Aromatherapy Minding My Mood 4-in-1 Essential Oil Blends**

Natural multipurpose fragrance oils.

**Energize** With lively mandarin and stimulating ylang-ylang.

**Calm** With comforting lavender and soothing star anise.

Each, 1.7 fl. oz. **606-376** reg. \$32

**\$25.99 boxed set of 2**



## MOISTURE THERAPY / PHYSIOGEL / MICROBIOME

### Moisture Therapy Calming Relief Hand Cream

With colloidal oatmeal. Relieves the itchiness associated with dry hands. 4.2 fl. oz. **786-349** reg. \$6 **\$2.69**



### Moisture Therapy Intensive Healing & Repair Hand Cream

Relieves extremely dry, chapped hands. Fragrance-free. 4.2 fl. oz. **482-937** reg. \$6 **\$2.69**



### Moisture Therapy Intensive Healing & Repair Extra Strength Cream

24-hour moisturization. Fragrance-free. 5.3 oz. net wt. **772-972** reg. \$8 **\$5.39**



### Moisture Therapy Bonus-Size Body Lotions

Each, 33.8 fl. oz. reg. \$20 **\$14.99 each**

#### Intensive Healing & Repair Body Lotion

72-hour moisture for extra-dry skin. Fragrance-free. **611-644**

#### Daily Skin Defense Body Lotion

Helps restore moisture to everyday dry skin. **603-028**

#### Calming Relief Body Lotion

Soothes and relieves dry, itchy skin. Fragrance-free. **611-663**



**Physiogel Hypoallergenic Daily Moisture Therapy Dermo-Cleanser for face**

Soap-free facial cleanser for dry and sensitive skin. 5 fl. oz. **094-384** reg. \$24 **\$18.99**



**Physiogel Daily Moisture Therapy Facial Cream\***

For normal to dry sensitive skin. 5.1 fl. oz. **847-511** reg. \$42 **\$33.49**



\*The National Eczema Association has awarded the Seal of Acceptance™ to Physiogel Hypoallergenic Daily Moisture Therapy Facial Cream.



**Moisture Therapy Balance + Soothe Body Lotion**

Skin looks softer and healthier. 13.2 fl. oz. **438-082** reg. \$25 **\$20**

**Moisture Therapy Balance + Soothe Body Wash**

Softens as it gently cleanses. 13.2 fl. oz. **438-078** reg. \$23 **\$18**

**Avon Microbiome by REACH® Hygiene Deodorant Stick**

Floral citrus scent. Aluminum-free. 24-hour odor protection. 2.65 oz. net wt. **524-528** reg. \$13 **\$10.99**





**Veilment CBD Dry Body Oil**  
 Lightweight. Nongreasy. Quickly nourishes skin with instantly replenishing hydration while it helps reduce redness and soothe irritation so skin looks healthy and radiant. Free of fragrance, mineral oil, parabens, phthalates and THC. 3.73 fl. oz. **869-485** reg. \$37 **\$30**



**Veilment CBD Nourishing Body Cream**  
 Skin feels soft, smooth and nourished. Jasmine scent. No THC. 5 fl. oz. **524-513** reg. \$33 **\$29.50**



**Veilment CBD Nourishing Body Cream (Tube)**  
 Same formula as original, now in a convenient tube. Skin feels soft, smooth and nourished. Jasmine scent. No THC. 6.7 fl. oz. **254-229** reg. \$38 **\$33**



**Veilment CBD Soothing & Nourishing Body Cream**  
 Concentrated formula. Visibly soothes and smooths. Geranium scent. No THC. 1.7 fl. oz. **524-509** reg. \$33 **\$29.50**



**Veilment Hemp Seed Oil Dry Body Oil**  
 Light, easily absorbed. Helps deeply nourish and hydrate dry and irritated skin. Fragrance-free. Hypoallergenic. 5 fl. oz. **564-106** reg. \$35 **\$28**



**Veilment Lumière Sunless Tanning Serum**  
 Mix and blend into daily body moisturizer for a customized, natural glow. Suitable for different skin tones. With skin-nourishing hemp seed oil. Each, 1.01 fl. oz. reg. \$24 **\$19.99 each**



Light/Medium 422-307

Medium/Dark 422-326

**An innovative exfoliating body wash that cools and refreshes with an ultimate veil of moisture**

**Glacial Water**

**Cooling Body Scrub & Cleanser**

Fresh Canadian glacial water with gently exfoliating apricot seed, moisturizing ceramides, cooling menthol and a clean peppermint scent. 13.5 fl. oz. **735-399** reg. \$15 **\$13.69**



**HIMALAYA PINK SALT**

Calming sage scent.

**Exfoliating Soap**

Daily body scrub and cleansing bar, with Himalayan pink salt, walnut shell, apricot seed and cranberry powder. 5.3 oz. net wt. **260-440** reg. \$8 **\$6**

**Body Scrub & Cleanser**

Himalayan pink salt. 13.5 fl. oz. **708-252** reg. \$15 **\$13.69**



**Dead Sea Salt**

**Body Scrub & Cleanser**

Israeli Dead Sea salt. Energizing citrus-ginger scent. 13.5 fl. oz. **707-988** reg. \$15 **\$13.69**



**Black Rose**

**Body Scrub & Cleanser**

French rose oil and apricot-seed powder. Aromatic black rose scent. 13.5 fl. oz. **707-969** reg. \$15 **\$13.69**





- **protects against** mosquitoes, deer ticks, no-see-ums, sandflies, gnats and biting midges
- **repels deer ticks** that may carry and transmit Lyme disease
- **DEET-free/PABA-free**
- **water-resistant**
- **SPF 28 & SPF 30**

## Expedition for all-in-one protection from sun+bugs

### BUG GUARD PLUS IR3535® EXPEDITION

No need to wash off.  
Dermatologist-tested.

#### A. Aerosol Spray

**SPF 28**  
Repels mosquitoes for 8 hours, deer ticks for 12 hours.  
4 oz. net wt.  
521-370 reg. \$20  
**\$14.99**

#### B. Family Size Pump Spray

**SPF 30**  
8 fl. oz. 255-259  
reg. \$24  
**\$17.99**

#### C. Pump Spray

**SPF 30**  
Repels mosquitoes for 8 hours, deer ticks for 10 hours.  
4 fl. oz. 255-278 reg. \$15  
**\$9.99**



Read and follow label directions and precautions.



## Gentle Breeze protects against sun+bugs+water

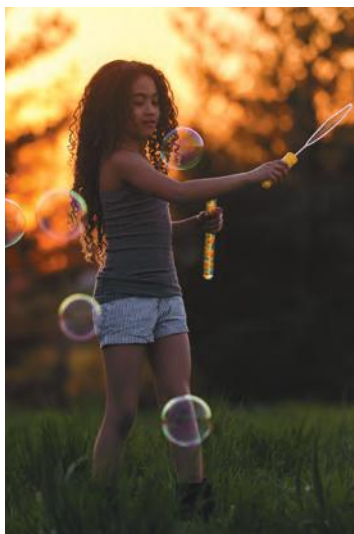
- **SPF 30**
- **water-resistant**
- **DEET-free/PABA-free**
- **with vitamin E & aloe**
- **repels mosquitoes** that may carry and transmit the Zika virus

### BUG GUARD PLUS IR3535® GENTLE BREEZE SPF 30 LOTION

No need to wash off.  
Dermatologist-tested.  
4 fl. oz. 851-324  
reg. \$15  
**\$9.99**







- **protects against** mosquitoes, deer ticks, sandflies, no-see-ums, gnats, biting midges and black flies
- **repels deer ticks** that may carry and transmit Lyme disease
- **DEET-free/PABA-free**
- **with vitamin E & aloe**



**Anti-Itch Spray\***  
Provides temporary  
itch relief from  
insect bites. 2 fl. oz.  
**972-031 reg. \$11  
\$7.69**

\*Does not repel insects.

## Picaridin for when bugs are most active dawn+dusk



### BUG GUARD PLUS PICARIDIN

**A. Travel Size Pump Spray**  
2 fl. oz. **009-600**  
reg. \$12  
**\$8.99**

**B. Pump Spray**  
Repels mosquitoes  
for 8 hours, deer ticks  
for 12 hours. 4 fl. oz.  
**255-373 reg. \$15  
\$9.99**

**C. Family Size Pump Spray**  
8 fl. oz. **255-187**  
reg. \$24  
**\$17.99**

**D. Towelettes**  
Repels mosquitoes for  
8 hours, deer ticks for  
12 hours. Resealable bag  
holds 8 packets. Each  
towelette, 9" L x 5½" W.  
Each, .3 fl. oz.  
**269-562 reg. \$16  
\$11.69 pack of 8**

**E. Aerosol Spray\*\***  
Repels mosquitoes for  
6 hours, deer ticks for  
7 hours. 4 oz. net wt.  
**315-243 reg. \$20  
\$14.99**

Read and follow label directions and precautions. \*\*Aerosol Spray does not contain aloe.



**Avon Shower Brush**  
 Long handle to easily reach down back. Brush helps to remove dead skin cells as it cleanses. Back of brush features many massage nubs. Non-slip comfort handle has a convenient hanging loop for easy storing and allows brush to dry quickly.  
**904-727 reg. \$10**  
**\$7.99**

**Veilment Care Moisturizing Bar Soap**  
 Derived from olive oil and infused with coconut oil.  
 2.8 oz. net wt.  
**380-864**  
 reg. \$2.50  
**\$1.99**



**Moisture Therapy Intensive Healing & Repair Moisturizing Lip Treatment Balm**  
 .14 oz. net wt.  
**285-117**  
 reg. \$2  
**99¢**



**Avon Flavor Savers Lip Balm**  
 Vanilla **209-501**  
 Melon **209-334**  
 Each, .14 oz. net wt.  
 reg. \$2  
**99¢ each**



**Veilment Care Lip Balm**  
 Infused with naturally moisturizing jojoba oil and coconut oil to keep lips soft and supple all day. Delicately scented and tinted.  
 Cherry **604-168**  
 Strawberry **602-720**  
 Each, .14 oz. net wt.  
 reg. \$2  
**99¢ each**



# DEODORANTS

## Roll-On Anti-Perspirant Deodorant

Each, 2.6 fl. oz. reg. \$3.60

**\$2.69 each**



**Candid**  
656-095  
**Far Away**  
836-226  
**Haiku**  
836-264  
**Imari**  
180-887  
**Rare Gold**  
836-250  
**Rare Pearls**  
906-897  
**Night Magic**  
Evening Musk  
836-298  
**Odyssey**  
836-317  
**Sweet Honesty**  
941-579  
**Timeless**  
941-583



**On Duty Unscented**  
926-820  
**On Duty Sport**  
094-365  
**On Duty Original**  
393-970  
**Cool Confidence Original**  
926-777  
**Cool Confidence Baby Powder**  
926-815  
**Feelin' Fresh Original**  
925-546



**Black Suede**  
337-403  
**Mesmerize**  
663-442  
**Wild Country**  
941-602

**Perfumed Liquid Deodorant**  
Soft floral scent.  
2 fl. oz.  
687-681  
reg. \$6  
**\$4.50**



## FOOT WORKS

### Overnight Renewing Cream

3.4 fl. oz.  
295-205  
reg. \$9  
**\$5.99**



### Deep Moisturizing Cream

2.5 fl. oz.  
308-962  
reg. \$6  
**\$4.69**



### Intensive Moisture Foot Cream

Suitable for diabetics.  
2.5 fl. oz.  
302-012  
reg. \$6  
**\$4.99**



### Foot Works Intensive Callus Cream

3.4 fl. oz.  
851-310  
reg. \$7  
**\$5.99**



### Maximum Strength Cracked Heel Cream

2.5 fl. oz.  
310-404  
reg. \$7  
**\$5.99**



### Arthritis Achy Foot and Muscle Cream

2.5 fl. oz.  
314-194  
reg. \$7  
**\$5.99**



### Deodorizing Spray

Can also be used in footwear.  
3.5 oz. net wt.  
313-236  
reg. \$10  
**\$7.99**



### Pedicure Kit

Case, 3 1/2" L x 4 3/4" W. Metal, man-made materials. Includes: nail clipper, toenail clipper, nail file, scissors, cuticle pusher.  
121-029  
reg. \$11  
**\$8.39**



### Pedicure Tool

4-in-1 tool! Plastic.  
3 1/8" L x 1 3/4" W x 1 1/2" H.  
Includes: fine-grain file, metal file, pumice, brush.  
592-712 reg. \$11  
**\$8.39**



# PERIOE HIMALAYA / WHITENING ESSENTIALS / PERIOE MICROBIOME

## Perioe Himalaya Pink Salt Toothpaste Tube Ice Mint

Pink gel paste with aloe vera essence beads. Fluoride-free. 3.4 oz. net wt. **883-276 reg. \$6 \$5**



## Whitening Essentials Toothpaste Perioe Black Charcoal Clean Mint

With 10X more activated charcoal (compared to Blanc Charcoal\*) to help remove stains and brighten teeth. 5.5 oz. net wt. **820-622 reg. \$11 \$9.19**



\*Sold online only.

## Whitening Essentials Toothpaste Original Cool Mint

With highly effective whitening agents to keep your smile bright. 5.5 oz. net wt. **478-259 reg. \$10 \$8.19**



## Perioe Microbiome Toothpaste

With fluoride, plus microbiome technology containing prebiotics to help maintain a healthy oral care balance.

### Whitening

Helps remove stains and brighten smile while fighting cavities. With charcoal and lemon extract. Cool Mint flavor. 4.1 oz. net wt. **543-287 reg. \$7 \$5.99**



### Total Care

Helps fight plaque and cavities, and promotes fresh breath. With charcoal and propolis extract. Strong Mint flavor. 5.4 oz. net wt. **543-268 reg. \$6 \$4.99**



REACH® & LISTERINE® FLOSS always remember to floss!



**LISTERINE®  
Ultraclean® Access® Flosser**  
Long ergonomic handle  
with nonslip grip. Unflavored  
floss heads. 239-360 reg. \$6  
**\$4.79**  
includes 8 floss heads



**LISTERINE®  
Ultraclean® Access® Mint  
Flosser Refill**  
Disposable mint-flavored floss  
heads. For use with the  
**LISTERINE® Ultraclean®  
Access® Flosser. 239-374**  
reg. \$7  
**\$5.64 pack of 28**

**LISTERINE®  
Ultraclean® Access®  
Unflavored Flosser Refill**  
Disposable unflavored floss  
heads. For use with the  
**LISTERINE® Ultraclean®  
Access® Flosser. 239-393**  
reg. \$7  
**\$5.64 pack of 28**



**REACH®  
Unflavored Waxed Floss**  
Accepted by the American  
Dental Association.  
55 yards. 239-317  
reg. \$3  
**\$1.99**



**LISTERINE®  
Cool Mint™ Floss**  
Waxed coating is shred-  
resistant. Mint flavor for  
the feeling of clean, fresh  
breath. 55 yards.  
239-355  
reg. \$5  
**\$3.99**



**LISTERINE®  
Ultraclean® Mint Floss**  
With patented MICRO  
GROOVES® technology for  
greater plaque removal and  
superior cleaning. 30 yards.  
239-321  
reg. \$5  
**\$3.99**

REACH® / PERIOE DUAL SONIC Portable Electric Toothbrush

**REACH® Interdental Brush**

Angled 14°, like dental tools. Helps clean hard-to-reach spots, including back corners. Removes up to 30% more plaque compared to brushing alone! Customized for different spaces between teeth. Specially coated wire for gum protection. Ribbed edge for a better grip. **reg. \$5 \$3.99 each**



**WIDE** Pack of 10 **630-164**  
**TIGHT** Pack of 10 **630-934**  
**EXTRA TIGHT** Pack of 10 **630-236**

**REACH® Professional Floss Picks**

Acute angle (14°), like dental tools, for better reach. Sturdy pick easily fits between teeth. Dented handle for a better grip. Mint flavor. Pack of 90. **630-179 reg. \$6 \$4.59 pack of 90**



**GOOD VIBES TO GO**

**Perioe Dual Sonic Portable Electric Toothbrush**



MICRO AND GENERAL BRISTLES FOR EXCEPTIONAL CLEANING

TWO-MINUTE TIMER WITH 30-SECOND INTERVALS/AUTO OFF FUNCTION

LONG HANDLE COMFORT GRIP

HYGIENIC CAP FOR ON-THE-GO CONVENIENCE!

❖ **Perioe Dual Sonic Portable Electric Toothbrush**  
 Battery powered—great on the go! Adjustable dual mode (strong/gentle). Up to 27,000 vibrations per minute. Four replaceable brush heads. AAA alkaline replaceable battery included. **432-376 reg. \$45 \$36.99 4 brush heads**

❖ **Perioe Dual Sonic Portable Electric Toothbrush Refillable Heads**

Mix of four types of bristles targets different areas: molar, teeth surface, interdental, gum. Replace heads every three months. **433-430 reg. \$12 \$9.99 includes 2 brush heads**



# ELASTINE SALON DE COLOR



## Elastine Salon de Color

100% grey coverage and rich, long-lasting color..without ammonia, parabens, mineral oil or benzophenone. For luxurious and healthy-looking hair. No appointment necessary. **reg. \$9.99 \$7.99 each**

### BROWNS

Make faded brown color vibrant!

#### 4B / Dark Chocolate Brown 039-727



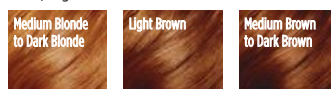
#### 5CB / Medium Chestnut Brown 040-110



### AUBURNS

Refresh, brighten or deepen color.

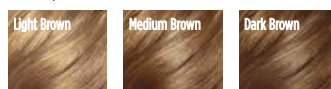
#### 6R / Light Auburn 044-608



### BLONDES

Lighten roots or completely color.

#### 7BL / Natural Dark Blonde 047-827



### Advance Techniques 360 Nourish with Moroccan Argan Oil Leave-In Treatment

Moisturizes dry, damaged hair. Infuses it with instant shine and silky smoothness.

2 fl. oz.  
511-411  
reg. \$16  
**\$11.69**



### Advance Techniques Dry Ends Serum

Helps mend and nourish split ends instantly. With pro-vitamin B. Hair looks smooth and silky.

2 fl. oz. **883-261**  
reg. \$11  
**\$7.99**



### Advance Techniques Daily Shine 2-in-1 Shampoo & Conditioner

Leaves hair feeling clean, conditioned and frizz-free. Suitable for daily use.

11.8 fl. oz.  
803-230  
reg. \$11  
**\$8.99**







# KICK BRASS

Visibly **repair damaged hair**. Keep it looking **vivid** and **brass-free** with healthy **shine**.

## Elastine Salon de Color Color Vibe

Nonirritating formula, suitable for any hair/scalp type.

Purple Shampoo **436-109**

Purple Conditioner **436-955**

Each, 8.4 fl. oz. reg. \$17

**\$13.99 each**



## WHAT'S IN IT

### VIOLET PIGMENT

helps neutralize brassy yellow and orange tones

### CAMELLIA OIL & GREEN TEA EXTRACT

help protect and define hair color

- **HYDROLYZED KERATIN**
- **PANTHENOL** • **COLLAGEN**

help repair weakened and damaged hair

### HYALURONIC ACID

helps hydrate hair and scalp and reduce frizziness

### APPLE CIDER VINEGAR

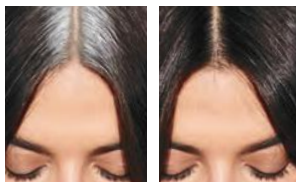
helps boost radiance



## Root Touch-Up

An instant way to cover up your roots and bare spots. Built-in mirror. Each, .25 oz. net wt. reg. \$18 **\$15.99 each**

## SIMULATION



before touch-up

after touch-up



Reddish Brown  
243-627

Light Brown  
244-642

Dark Brown  
245-213

Black  
245-251

# ELASTINE PROPOLITHERA / BEE CURLY

## ELASTINE PROPOLITHERA

### Volumizing

Enhances texture so hair looks fuller, thicker, stronger. Each, 16.9 fl. oz.

**A. Shampoo**

**892-607**

**B. Conditioner**

**892-870**

### Damage Repair

Helps hair appear smooth and manageable.

Each, 16.9 fl. oz.

**C. Shampoo**

**053-082**

**D. Conditioner**

**638-681**

### E. Hair Oil Serum

Helps to strengthen, protect, moisturize and smooth hair, and to add shine while styling.

5.7 fl. oz. **895-190**

### F. Hair Mask

Enriched with nutrients to help deeply nourish hair and mend damaged split ends.

10.1 fl. oz.

**150-301**

reg. \$18  
**\$15.99 each**



## ELASTINE PROPOLITHERA BEE CURLY

A patented technology\* that helps care for curly hair to create silky, super-lustrous curls even after the first use.

### Shampoo

16.9 fl. oz.

**059-975**

reg. \$29

**\$23.99**



### Conditioner

16.9 fl. oz.

**060-846**

reg. \$29

**\$23.99**



### Serum

5.7 fl. oz.

**061-565**

reg. \$29

**\$23.99**



\*Shampoo and conditioner only.

## ELASTINE PROPOLITHERA REJUVENATING styling boosters

### Aloe Dual-Active Hair Serum

Intense hydration with vitamins, minerals and other nutrients to bring damaged or chemically processed hair back to life.

3.4 fl. oz.  
**102-585**  
 reg. \$30  
**\$25**



### Leave-In Conditioner

Hydrates and nourishes dry hair, infusing it with rich luster.

8.1 fl. oz.  
**102-570**  
 reg. \$19  
**\$15**



### Serum Treatment

Upon contact with water, nutrient-rich, moisturizing liquid visibly transforms into a creamy formula. 7.8 fl. oz.

**359-821**  
 reg. \$22  
**\$18**



### Curl Cream

Rich hydration for bouncy, defined curls. Reduces frizz for a smooth, healthy-looking shine. 5 fl. oz.

**102-475**  
 reg. \$19  
**\$15**



Rejuvenating hair treatment for a lustrous-looking shine enriched with **GOLD-Polypeptide Protein Complex** to help repair and strengthen damaged hair and keep it looking silky smooth and voluminous.

### Hair Deep Conditioning Treatment Cap

Nourishing deep-conditioning treatment mask replenishes moisture in one cap application. With the bee goodness of propolis (tree sap and beeswax), honey and royal jelly for healthy-looking body and shine. Berry, rose and peony scent. Use as needed. Single-use cap. 1.4 oz. net wt.

**053-761**  
 reg. \$8  
**\$6.99**



**1** After shampooing, remove excess water. Cover all hair with cap.



**2** Adjust cap to size of your head.



**3** Lightly massage for even absorption of nutrients.



**4** Remove cap after 10-15 minutes. Rinse thoroughly.



## SPRING IS IN THE HAIR!

Shampoo and conditioner in one, with patented 2-in-1 technology, moisturizes hair while controlling odors so it looks and feels fresh and smooth, with a **fragranced formula** to give it a forever-springtime scent. Free of sulfates and parabens. Suitable for daily use.

### Love Me

Jasmine and ylang-ylang. 8.4 fl. oz.  
154-857 reg. \$16  
**\$12.99**

### Fresh Citrus

Lime, mandarin and basil. 8.4 fl. oz.  
154-876 reg. \$16  
**\$12.99**

### Pure Breeze

White rose and Bulgarian rose. 8.4 fl. oz.  
154-861 reg. \$16  
**\$12.99**

# STYLING BRUSH-UP

for all hair types

**NEW**

**Avon Detangling Comb**

Glides through wet or dry hair without tugging or pulling.

**504-820**  
reg. \$5.99  
**\$4.99**



**NEW**

**Avon Blow-Dry Round Hairbrush**

Smooth and straighten, or curl and wave. Easy, painless styling with comfort handle.

**504-800**  
reg. \$17.99  
**\$14.99**



**NEW**

**Avon Detangling Hairbrush**

Flexible bristles move through knots and tangles and minimize pain and split ends.

**504-815**  
reg. \$12.99  
**\$9.99**



**NEW**

**Avon Compact Hairbrush**

Pop it in your purse and go. Use on wet or dry hair.

**504-743**  
reg. \$9.99  
**\$7.99**

## CBD / HEMPHARMX / MOISTURE ESSENTIALS

### Elastine HempharmX

Shampoo and conditioner with cold-extracted hemp seed oil. Contains omega 3-6-9, known to help moisturize and nourish hair and prevent breakage with weightless hydration that delivers full volume. Vegan formulas. Both silicone-free. Shampoo is sulfate-free.

**Hydrating Shampoo**  
359-836  
**Hydrating Conditioner**  
360-544  
Each, 13.5 fl. oz.  
reg. \$24  
**\$20 each**



### Elastine CBD & Hemp Seed Oil Cooling & Soothing Conditioner

Helps moisturize dry hair. Free from parabens and sulfates. No THC. 11.8 fl. oz.

**436-989**  
reg. \$23  
**\$19**



### Elastine Moisture Essentials

With richly moisturizing ceramide to help visibly strengthen strands, protect hair from wear and tear, and promote elasticity and shine.

### ceramide + biotin

Helps dry, damaged hair look and feel fuller and healthier.

**Shampoo 495-106**  
**Conditioner 495-110**  
Each, 12.7 fl. oz. reg. \$9  
**\$6.99 each**

### ceramide + argan oil

Helps moisturize and reduce split ends, and keeps locks looking shiny and smooth.

**Shampoo 495-125**  
**Conditioner 495-130**  
Each, 12.7 fl. oz. reg. \$9  
**\$6.99 each**



## want volume?

### Rosemary & Sea Salt

With rosemary to help promote thicker hair and scalp health, sea salt to add body.

**Volumizing Shampoo 240-556**

**Volumizing Conditioner 246-831**

Each, 6.7 fl. oz.

reg. \$4.50

**\$3.79**  
each



# Elastine Botanicals

Infused with revitalizing babassu seed oil, chamomile flower water and lemon chestnut extract, and pH balanced, like healthy hair, it helps bring damaged hair back to life, adding dewy moisture for a smooth, natural-looking sheen.

NO • Parabens • Silicone • Mineral oil  
• Triclocarban • Triclosan

## dry hair?

### Cherry Blossom & Hyaluronic Acid

Moisturize dry, damaged hair with our hyaluronic acid-infused formula as thirsty strands drink it up.

**Moisturizing Shampoo 239-943**

**Moisturizing Conditioner 240-059**

Each, 6.7 fl. oz.

reg. \$4.50

**\$3.79**  
each



## frizzy hair?

### Argan & Castor

With nourishing ingredients, helps protect hair from damage and breakage. Adds luster and smoothness.

**Anti-Frizz Shampoo 150-866**

**Anti-Frizz Conditioner 150-904**

Each, 6.7 fl. oz.

reg. \$5.39

**\$4.49**  
each



## CHI® ESSENTIALS / CHI® ESSENTIALS REVIVE KERATIN + BONDING

### CHI® Essentials Replenishing Shampoo

Gentle daily shampoo with essential vitamins, minerals and amino acids. No sulfates or parabens, so it won't strip hair of natural oils. Safe for color-treated hair.

12 fl. oz.  
589-140  
reg. \$20  
**\$16.99**



### CHI® Essentials Moisturizing Conditioner

Lightweight daily conditioner. Infused with aloe to lock in rich moisture. With vitamins A and B to help strengthen hair from roots to ends, increase elasticity and help smooth split ends and frizz.

12 fl. oz.  
589-409  
reg. \$20  
**\$16.99**



### CHI® Essentials Repairing Serum

Deeply penetrating-yet-lightweight serum helps strengthen, protect, moisturize and smooth. With vitamin A to help seal split ends, and rosemary to help boost volume and shine.

6 fl. oz. 589-413  
reg. \$33  
**\$27.59**



### CHI® Essentials Revive Keratin + Bonding Restoring Shampoo

Cleanses, moisturizes and protects against split ends and frizz.

12 fl. oz. 451-192  
reg. \$25  
**\$19.99**

### CHI® Essentials Revive Keratin + Bonding Protecting Serum

Apply to damp or dry hair for smoothness and shine, and as a hair shield from the sun.

3 fl. oz. 451-340  
reg. \$42  
**\$34.99**

### CHI® Essentials Revive Keratin + Bonding Restoring Conditioner

Helps restore dry, damaged and brittle hair.

12 fl. oz. 451-211  
reg. \$25  
**\$19.99**





## CHI® PRO STYLERS & TOOLS for salon-quality results

### CHI® ENVIRO 54® Natural Hold Hair Spray

For brushable hold.  
Lightweight. Fast-drying.  
No build-up. Anti-humidity.  
Thermal protectant for  
blow-drying. With silk  
to help build hair's  
strength and resilience,  
and natural botanicals  
to add volume and  
enhance shine.  
Paraben-free.  
10 oz. net wt.  
**908-450**  
reg. \$26.50  
**\$21.50**



### BioSilk® Silk Therapy®

Replenishes and reconstructs to help  
repair and protect all hair types. Tames  
frizz and flyaways and leaves hair silky  
smooth with reflective shine. Helps  
shield hair from UV rays, heat and  
humidity. 5.64 fl. oz.

**011-349**  
reg. \$35  
**\$28.99**



### CHI® 1\"/>

Ceramic Pro Spin 'n' Curl  
Preset temperature  
controls with adjustable  
timers and LED screen  
display. For any hair type.  
12\"/>

Use only as directed.  
**471-527**  
reg. \$199  
**\$179**

### ATTACHMENTS INCLUDED



### CHI® Advanced Ionic Compact Hair Dryer

Powerful 1875-watt ion  
generator emits negative  
ions to reduce drying time.  
Lightweight, compact  
design. Rapid Clean  
Technology with Blue LED  
light for cleaner air during  
styling. Adjustable heat and  
air-speed settings. Removable  
filter. 6½ ft. cord. Use only as  
directed. **471-474** reg. \$150  
**\$135**



## DR. GROOT your solution to thinning hair



### Premium Scalp Cleansing Brush

Helps promote cleansing of residue while massaging to reinvigorate health of scalp as it helps to stimulate circulation. **065-776**

reg. \$19

\$16



### Scalp Fortifying Serum Treatment

Moisturizes and helps support healthy hair roots and growth.

6.7 fl. oz.

**782-271**

reg. \$35

\$29



### Scalp Fortifying Hair-Thickening Shampoo

With coconut oil, cleanses as it helps moisturize dry scalp and hair.

13.5 fl. oz.

**778-014**

reg. \$35

\$29



# KEEP SCALP & HAIR FLAKE-FREE

## What's in it:

**3% SALICYLIC ACID**  
Clears and helps prevent flakes and itching associated with dandruff.

**Panthenol**  
Helps hydrate, soothe and protect hair.

**NIACINAMIDE**  
Helps refresh scalp by helping to retain moisture.

**BIOTIN**  
(Vitamin B7)  
Known to help visibly improve hair volume.

**CAFFEINE**  
Known to help visibly improve scalp condition.

**GINGER, ROSEMARY, FRESH MINT**  
Three plant-derived scalp-care ingredients.

**MENTHOL**  
Helps scalp feel cool, clean and refreshed.

No sulfates or parabens.



**Anti-Dandruff Scalp Care Shampoo**  
No silicones.  
10.1 fl. oz. **451-412**  
reg. \$27  
**\$21.99**

**Anti-Dandruff Scalp Care 2-in-1 Shampoo and Conditioner**  
10.1 fl. oz. **451-431**  
reg. \$27  
**\$21.99**

# THE WOW DEAL

**5-PIECE SET  
ONLY \$40**

**\$156 VALUE**

**965-306**

SMOOTH, REFRESH AND REVITALIZE  
YOUR SKIN AND HAIR.



## COLLECTION INCLUDES:

**fmg Makeup Remover Wipes**  
Pack of 24 wipes.  
\$9 value

**JUMBO SIZE  
ANEW Platinum Night Cream**  
2.5 oz. net wt.  
\$52 value

**Anew Power Serum**  
1 fl. oz.  
\$45 value

**CHI® Essentials Revive Keratin + Bonding Restoring Shampoo**  
12 fl. oz.  
\$25 value

**CHI® Essentials Revive Keratin + Bonding Restoring Conditioner**  
12 fl. oz.  
\$25 value



Enjoy special prices and offers with an Avon account or Representative.

© 2023 The Avon Company. All rights reserved.

## CAMPAIGN 24, 2023

THE AVON COMPANY  
165 BROADWAY, NY, NY 10006

To place an order, call:



Pk of 10 59371-9



Single 59367-9

Brochure effective until \_\_\_\_\_

Find me at [www.avon.com/repstore/](http://www.avon.com/repstore/) \_\_\_\_\_



Not applicable in  
Puerto Rico or  
the Caribbean.



See our commitment at  
[www.avon.com/animal-welfare](http://www.avon.com/animal-welfare)

**RETURN POLICY** If you are not satisfied, return any item within 45 days. View Avon's full 45-Day Return Policy at [avon.com/shipping-returns](http://avon.com/shipping-returns).