



**Sagal Group's Total Lifecycle Care Promise:**  
Peace of Mind for your Workplace Furniture

#LoveWhereYouWork

**sagal\*** creating  
inspirational  
spaces

LOVE  
WHERE  
YOU  
WORK  
STARTS  
WITH  
YOU

#LOVEWHEREYOUWORK

## Why?

Sagal Group **exists** to create amazing spaces for people to enjoy. With a strong focus on spaces within commercial offices and some crossover into the leisure and retail markets.

Sagal Group work with **like-minded** design, construction and furniture partner professionals, **supporting** both them and their clients through the **entire process** of developing and delivering a furniture solution that embraces the **overall design brief, aspirations, function and form.**

Rather than being merely a single factory producer with little or no control over product design, we **partner** with a small number of **selected factories** in the UK, Europe and Scandinavia.

This collaborative business structure allows us to **blend the right skills** and craftsmanship needed for the varied requirements of all our clients and partner professionals.

## Our Core Values

Communication is at the forefront of who we are, supporting our clients with our expertise and knowledge within the industry. As a team, and individuals we have a passion for what we do meaning that we can excel, engage, and inspire.

These are our top 5 Values we live by to get us out of bed on Monday, You can't sell something if you don't believe it, and we really do **#LoveWhereYouWork** with a glass of wine and an appropriate cheeseboard selection.. Ooh and some Lego.

- **BE YOURSELF**
- **BE PASSIONATE**
- **OWNERSHIP (OWN IT)**
- **PERFORMANCE (PURSUE YOUR GOALS)**
- **CUSTOMER SUCCESS (SHARE SUCCESS)**



## What is Sustainability?

In recent years, sustainability has become an increasingly important issue in society, and businesses are expected to play their part in creating a more sustainable future. But what exactly does sustainability mean in the workplace, and how can companies ensure they are acting in a socially and environmentally responsible way?

At Sagal Group, we don't just tick boxes when it comes to sustainability and ethics - we take action. We are dedicated to reducing our environmental impact in every aspect of our business, from design to transportation, installation, and recycling.



We Give A Crap Toilet paper features in our showroom bathrooms because its good for the planet, plastic free and made with sustainable materials.



**Change is inevitable... whether that's team growth, a merger, a downsize, a relocation, or perhaps a complete change in the way you work.**

Wherever your business takes you, or however your business evolves, when you purchase furniture from us, you are covered by our TLC – Total Lifecycle Care at no additional cost to ensure you always #lovewhereyouwork.

## TLC Lifecycle Care

Annual Health Check | Full Factory Warranty | Continuity Programme | Global Delivery | WFH (Homeworking) Delivery | Product Training | Performance & Utilization Audit | New Solutions Development | Future Planning & Implementation  
Reuse, Repurpose, Recycle (3Rs)

### Why?

Industry Standards are full of hollow promises and statements that cannot be fulfilled. We are the **ONLY** company in our industry taking **COMPLETE RESPONSIBILITY** for our furniture product, from design, through production, delivery, service and end of use.

### Who?

All of our customers are automatically covered by Total Lifecycle Care at no cost to them.





## TLC Lifecycle Care – What’s in it for me?

**Annual Health Check** - in person, ongoing support is at the heart of Total Lifecycle Care. Each year, we contact you to arrange a site visit and carry out our detailed check on all of your Sagal products, train your employees, perform upgrades and make sure your furniture is 100% just as you need it.

**Full Factory Backed 10 Year Warranty** Complete peace of mind for you. If there is a manufacturing defect, we'll put it right. No problem.

**Continuity Programme** - we want to support your success. We aim to make sure our products are available to you into the future so you can experience the great furniture you select now for years to come.

**WFH (Homeworking) Delivery** – hybrid working - employees combining office and home working is provided for completely via our dedicated service MyHomeHive

**Global Delivery** - we can support your business globally.

Through our partners, we can give your teams across the world the same industry beating products and support.

**Performance & Utilization Audit** – get the very best from your space. Deep analysis to show where your business needs to focus, be that private working, team spaces, training areas, video conference etc

**Reuse, Repurpose Recycle (3Rs)** - We take responsibility with our ongoing customers for all unwanted furniture. TLC allows us to work with you when change is needed to Reuse, Repurpose and Recycle, delivering on our Environmental and Sustainable promise to reduce our impact to a minimum thereby helping to secure a better world for future generations.

Supporting the UK target for Net Zero Carbon Emissions.

## Design & Production

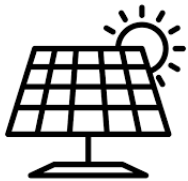
Our commitment to sustainability begins with designing high-quality furniture with a long lifespan, backed by extensive warranties and high levels of recyclability. This approach reduces the need for replacements, drives down the life cycle costs of our products, and minimizes waste that ends up in landfills. We also prioritize raising awareness among our clients about sustainability, especially when it comes to recycling and re-purposing their furniture.



## Design & Production

Our factories always promotes as active protection of the environment, taking into consideration the impact of environmental resources at the initial stages of creation and product development.

Two of our factories also use a 70kw photovoltaic system guaranteeing maximum energy efficiency across all production lines.



### What is Photovoltaic?

Photovoltaic used solar power, PV energy is clean unlike traditional resources, and unlike traditional resource's they do not create any harmful greenhouse gases, pollute ground water, or deplete and natural resources.





## Design & Production - Materials

### **Steel Components:**

we are committed to reducing our environmental impact in every way we can. That's why all our aluminium and steel components are fully recyclable. In fact, our Insieme ranges are made from 55% recycled steel and are 100% recyclable. But we don't stop there. We always strive to re-use our furniture before recycling it, whether that's by reconfiguring, repurposing or moving it on as pre-loved furniture.

### **Veneers and Timber:**

We source our veneers and timber from FSC-accredited suppliers who practice sustainable forestry, supporting responsible resource management.

### **Plastic Components:**

We use materials with an ATSM recycling code wherever possible, making it easy to identify and recycle plastic components.



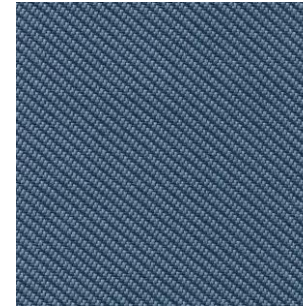
## Design & Production - Materials

### Fabrics and Upholstery:

We're committed to using materials that have a minimal environmental impact, and we're constantly exploring new options and technologies to achieve this goal. As part of this commitment, we offer several textiles with recycled content, providing our clients with sustainable and environmentally responsible options.

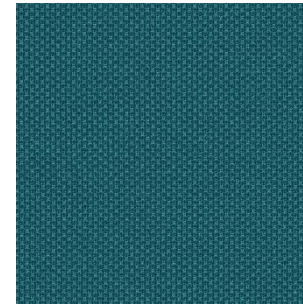
### Foams

Our furniture foams, which are produced without the use of harmful substances such as halogenated flame retardants, HFCs, and methylene chloride. In addition to offering high-quality and comfortable products, we are dedicated to making a positive impact on the environment and promoting a more sustainable future. To this end, we actively seek out and work with factories that share our values and are committed to innovating and finding sustainable alternatives. (Such as 3D Printing Foams) Our furniture foams, which are produced without the use of harmful substances such as halogenated flame retardants, HFCs, and methylene chloride.



#### Camira Oceanic

Made from 100% post-consumer recycled polyester  
Non metallic dyestuffs  
Certified to the EU Ecolabel  
Certified to OEKO-TEX®  
Standard 100  
Certified to Indoor  
Advantage™ Gold



#### Fidivi ONE Recycled

Knitted fabric, 100%  
Recycled Polyester from  
bottles.  
Certified to OEKO-TEX®



#### Svensson Debut

Certified to OEKO-TEX®

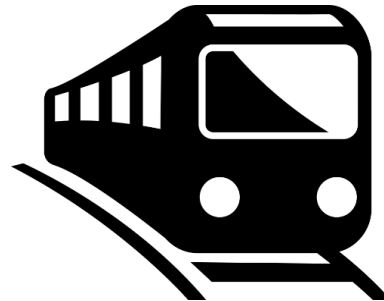
**Wool 78 %**  
Viscose 10 %  
Rami 12 %  
Recycled material: 25%

## Transport & Logistics

Choosing sustainable transportation is one of our top priorities.



Our sustainable practices include promoting cycling to work. **Two people cycling 150km each for a week can save 144kg of CO2 emissions compared to taking the train.** Join us in creating a greener future! #sustainability #cycling #carbonfootprint"



In 2022, we opted to take the train to the Orgatec design fair in Cologne, **saving approximately 438kg of CO2 emissions** compared to flying. We are committed to reducing our carbon footprint and promoting environmentally friendly practices. #sustainability #carbonfootprint"



Wherever possible we combine deliveries and installation, this is detailed on our quotes as an **Eco-Van run** as it just makes logical sense. Similarly when specifying furniture for our customers we will do our best to accumulate as much as possible from 1 factory rather than many – unlike a dealer.

## Goals – Always improving

**Increase product lifespan:** We will continue to design and manufacture quality furniture with a long lifespan, supported by extensive warranties and high levels of recyclability, to reduce the need for replacements and minimize what goes to landfill.

**Reduce waste:** We will strive to minimize waste throughout the entire production process, from design to recycling, by implementing circular economy principles, such as reducing raw material usage, reusing waste materials, and improving recycling capabilities.

**Raise awareness:** We will raise awareness among clients and stakeholders about sustainability and the importance of recycling furniture, to encourage responsible consumption and reduce waste.

**Obtain certifications:** We will seek and maintain ISO14001 accreditation for our factories to demonstrate our commitment to environmental management and continuous improvement.

**Improve production methods:** We will work closely with our factories to develop and implement more environmentally friendly methods of production, including new technologies and processes that reduce raw material usage, emissions, and hazardous by-products.

**Measure and monitor:** We will regularly measure and monitor our environmental impact, including our carbon footprint, waste generation, and resource usage, to identify areas for improvement and set targets for reduction.

**Encourage suppliers:** We will work with our suppliers to ensure that they also adhere to sustainable and ethical practices, including responsible sourcing of materials, reducing waste, and minimizing environmental impact.

**Support recycling:** We will support recycling initiatives and processes to ensure that end-of-life furniture is recycled and kept out of landfill, and explore innovative recycling solutions to further reduce waste.

## What Our Customers Say..



Thanks to Sagal and their patience we have beautiful furniture to complement our fabulous new office refurbishment.

- nDreams

@SAGALGROUP  
LOVEWHEREYOUWORK



From the introduction to the installation, we had confidence in their service. We have been very pleased with the outcome.

- TheCityUK

@SAGALGROUP  
LOVEWHEREYOUWORK

Quick turn around and very responsive. Great job on our office solutions and Natalie was great to work with.

- WebsterHart

@SAGALGROUP  
LOVEWHEREYOUWORK

Everything starts from a positive/can do position and they then work hard to deliver the project - Sagal is an absolute pleasure to work with.

- Farebrother

@SAGALGROUP  
LOVEWHEREYOUWORK





## Knowledge Centre

Check out our latest posts

<https://www.sagalgroup.co.uk/knowledge-centre/>

READ ›



### IS OFFICE FURNITURE AN ASSET TO MY BUSINESS?

Yes, office furniture can be considered an asset to a business. An asset is something that has value and can [...]



### HOW DOES OFFICE FURNITURE AFFECT PRODUCTIVITY?

Office furniture can have a significant impact on both productivity and wellbeing in the workplace. In terms of productivity, the [...]



### DOWNSIZING YOUR OFFICE SPACE? READ THIS FIRST.

Christian Logue, MD of Sagal Group, explores how a well-thought-through design can make a smaller office a hugely productive space. [...]

LOVE WHERE YOU WORK  
STARTS WITH YOU

#LOVEWHEREYOUWORK

Christian Logue

chris@sagalgroup.co.uk  
07768 295 607

Natalie Rice

natalie@sagalgroup.co.uk  
07557 569 083

