



RHINOCO TRADE SPECIALS

WE ARE HERE TO SUPPORT YOU

CAMERAS - ALARMS - INTERCOMS - ACCESS - LIGHTING
SOLAR - BATTERY STORAGE - DISPLAYS - ELECTRICAL



Unbeatable offers for the professional installer

We promise to deliver you the best brands, warranty and local Australian technical support to help you succeed and grow your business!



BUY ONLINE NOW: VISIT RHINO.AU

CALL (02) 9671 6711 - SALES@RHINO.AU
SAME DAY SHIPPING - VISIT US IN STORE



We're dedicated to winning you more business.

RhinoCo Technology is your premier **wholesale and distribution** company, specialising in CCTV, security, alarms, lighting, electrical and battery systems.

We have branches located across Sydney for local pickups, and with fast Australia-wide shipping, RhinoCo always has you covered.

We are dedicated to your business' success and, by becoming a RhinoCo Technology customer, we promise to share our **over 45 years experience** to help you achieve that success.



RhinoCo Superstore, Guildford NSW

RhinoCo Technology Locations:

McGraths Hill Head Office & Support
9 Hannabus Place McGraths Hill, NSW 2756

Haberfield Showroom & Sales Office
223-225 Ramsay Street Haberfield, NSW 2045

Guildford Showroom & Sales Office
577 Woodville Road Guildford, NSW 2161

Take advantage of our over 45 years experience

At RhinoCo, we will do whatever it takes to help you deliver incredible installations that earn you more and bring value to your business.

Leverage our 45 years of industry experience and let us show you how we can inspire your trade business.



Frank Ferrara, Director



The best Australian brands.

Succeed using our market leading Australian brands. Choose our well known, unique & protected brands to add value to your installations.



Industry leading warranty.

RhinoCo backs our brands and products with a leading 4 year or greater warranty on our professional CCTV, alarm, access control and intercoms.



Providing excellent support.

Save time and effort and get the answers you need with our Australian-based expert technical support team and detailed online knowledge base (Visit <http://help.c5k.info>).



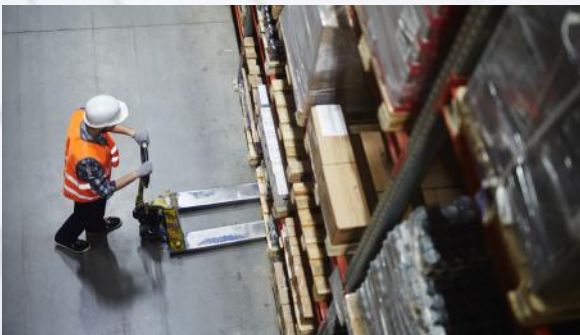
Scan to visit our knowledge base



We have you covered with our national distribution centre.

Our distribution centre in Mulgrave, NSW with over 4,000m² of space for stock.

We're ready to supply you with whatever you need. With our huge national distribution centre filled with stock and same day shipping Australia-wide, we'll make sure you always get what you need for your job.



Same day shipping.

We ship nationally within one day from our distribution centre, with same day delivery for the Sydney Metro area.



Same day trade approval.

Sign up with your ABN and relevant license(s) and we'll immediately set you up with a trade account and dedicated sales representative.

Ready to supply you for your next installation



Here to save you time.

Get to your next job or finish the day earlier - save time on your next install with pre-configured systems in CCTV, WiFi, intercoms, access control & more.



Tools to help you succeed.

Leverage our marketing materials to support your quotes and win jobs - business cards, custom brochures, posters, demo stands & more.



Unique winning solutions.

We custom engineer solutions to your creative installation problems to achieve a winning solution. Ask us how we can support you in your next project.



It is our mission to support and inspire your installation business.

Let us prove it to you.



Alarms & Surveillance

Latest AI-powered NVRs, new from Watchguard



AI People & Vehicle Detection



AI Quick Search



Face Recognition

New small form NVRs with big AI features

Face Recognition and AI people/vehicle detection in 4CH, 8CH & 16CH models



Compact AI Series 4 - 16 Channel NVRs

- Record beyond Ultra HD up to 16.0MP (4920 x 3264)
- Available in 4, 8 and 16 channel systems with built in PoE
- AI human/vehicle motion detection by NVR up to 4 channels
- AI human/vehicle tripwire/intrusion by NVR up to 2 channels
- AI face recognition & AI face database up to 1 channel
- Improved 4K decoding performance over Compact Series
- Up to 2 x SATA ports for up to 20TB HDD storage



NVR4COM-I
(4CH, 4 PoE, 1 HDD)

NVR8COM-I
(8CH, 8 PoE, 1 HDD)

NVR16COM-I
(16CH, 16 PoE, 2 HDD)

[Log in/Sign up to view price](#)

NEW



NEW



Professional AI Series 8 Channel NVR

- Record beyond 12.0MP (up to 256Mbps); H.265+
- AI human/vehicle motion detection up to 4 channels
- AI human/vehicle tripwire/intrusion up to 2 channels
- AI face recognition & AI face database up to 1 channel
- Perform AI functions even when using non-AI cameras
- Built-in 8 x PoE, 2 x HDD bays, alarm input/output

NVR8PRO-I
(8CH, 8 PoE, 2 HDD)



Professional AI Series 32 Channel NVR

- Record beyond 12.0MP (up to 320Mbps); H.265+
- AI human/vehicle motion detection up to 12 channels
- AI human/vehicle tripwire/intrusion up to 12 channels
- AI face recognition & AI face database up to 4 channel
- Perform AI functions even when using non-AI cameras
- 16 x PoE, 8 x ePoE, 4 x HDD, alarm input/output

NVR32PRO16P-12
(32CH, 16 PoE, 4 HDD)

[Log in/Sign up to view price](#)



Recorders for every job size



Compact Series 4 - 16 Channels NVRs

- In 4, 8 and 16 channel systems, all channels PoE
- Support for up to 8.0MP / 4K camera resolution
- 1/2 x HDD bays with HDMI and VGA display outputs
- Support for AI cameras; IVS rules & motion detect
- Quick configure phone/tablet remote view via QR code

NVR4COM3 **NVR8COM3** **NVR16COM3**
 (4CH, 1 x HDD) (8CH, 1 x HDD) (16CH, 2 x HDD)

[Log in/Sign up to view price](#)



Professional Series 4 - 32 Channel NVRs

- Available in 4, 8, 16, 24 and 32 channel systems
- Records up to 12.0MP resolution (4000 x 3000)
- All PoE (32PRO 16 x PoE); ePoE (8CH, 16CH & 32CH)
- Up to 4 x HDD ports, max. 40TB HDD capacity
- Support for AI cameras; IVS rules & motion detect
- Easy phone setup via QR code; live view & playback

NVR4PRO4 **NVR8PRO7** **NVR16PRO7** **NVR24PRO6** **NVR32PRO16P3**
 (4CH, 2 HDD) (8CH, 2 HDD) (16CH, 4 HDD) (24CH, 4 HDD) (32CH, 16 PoE, 4 HDD)



Ultimate Series 32 - 64 Channel NVRs

- High performance surveillance Intel® Core™ processors
- Record up to 12.0MP resolution (4000 x 3000)
- 8 x SATA ports up to 10TB, max. 80TB HDD capacity
- Hot-spare & hot-swapping support (64CH only)
- 384Mbps bandwidth to handle large number of inputs
- RAID profiles support for HDD optimisation / redundancy
- 2 x gigabit RJ45 inputs, Alarm I/O programmable outputs
- Live view, playback & record via your phone/tablet

NVR32ULTNPV2 **NVR64ULT8S**
 (32CH, No PoE, 8 HDD) (64CH, No PoE, 8 HDD)

[Log in/Sign up to view price](#)





Alarms & Surveillance

Professional camera systems for home & small business

6.0
MEGAPIXEL



NEW



4CH 6.0MP CCTV Kit (1TB, 4 Cams)

- 1 x 4CH NVR, 4 x PoE, 1 x HDD bay, 80Mbps
- 1 x Pre-installed 1TB SkyHawk surveillance HDD
- 4 x Turret cameras, 6.0MP@25fps, 2.8mm (103°), 30m infrared, full metal IP67 housing, PoE/12VDC

NVRKIT-L461-4C
(4CH, 4CAM, 1TB)



Add up to
4 additional
IP cameras



8CH 6.0MP CCTV Kit (2TB, 4 Cams)

- 1 x 8CH NVR, 8 x PoE, 1 x HDD bay, 80Mbps
- 1 x Pre-installed 2TB SkyHawk surveillance HDD
- 4 x Turret cameras, 6.0MP@25fps, 2.8mm (103°), 30m infrared, full metal IP67 housing, PoE/12VDC

NVRKIT-L862-4C
(8CH, 4CAM, 2TB)

[Log in/Sign up to view price](#)

High value installs with Watchguard Compact Series



4.0
MEGAPIXEL

4K
ULTRA HD



Compact Series Bullet

- 4.0MP@20fps, 8.0MP@15fps
- 30m infrared, 2.8mm lens (102°)
- Starlight, WDR, IP67 metal chassis
- Tripwire/intrusion video analytics

VSIPC-4BIRS2
(4MP, 102°)

VSIPC-8BIRS
(8MP, 105°)

[Log in/Sign up to view price](#)



4.0
MEGAPIXEL

4K
ULTRA HD



Compact Series Dome

- 4.0MP@20fps, 8.0MP@15fps
- 30m infrared, 2.8mm lens (102°)
- Starlight, WDR, IP67 & IK10 chassis
- Tripwire/intrusion video analytics

VSIPC-4DIRD2
(4MP, 102°)

VSIPC-8DIRD
(8MP, 105°)

[Log in/Sign up to view price](#)



4.0
MEGAPIXEL

4K
ULTRA HD



Compact Series Turret

- 4.0MP@20fps, 8.0MP@15fps
- 30m infrared, 2.8mm lens (102°)
- Starlight, WDR, IP67 metal chassis
- Tripwire/intrusion video analytics

VSIPC-4DIRG2
(4MP, 102°)

VSIPC-8DIRG2
(8MP, 105°)

[Log in/Sign up to view price](#)

The perfect image every time with VIP Vision

Remote zoom adjust in 4MP and 8MP / 4K with Pro Series IP cameras



Pro Series Motorised Lens IP Cameras

Available in bullet, vandal dome and turret models

4.0MP@20fps, 8.0MP@15fps, 2.7~13.5mm lens (112°~46°), up to 60m IR, WDR (120dB), tripwire/intrusion, audio/alarm (excl. turret), IP67, IK10 (dome only), 12VDC/PoE

VSIPP-4BIRMG
(4.0MP Bullet)

VSIPP-8BIRMG
(8.0MP Bullet)

VSIPP-4DIRMD
(4.0MP Dome)

VSIPP-8DIRMD
(8.0MP Dome)

VSIPP-4DIRMG
(4.0MP Turret)

VSIPP-8DIRMG
(8.0MP Turret)



4.0
MEGAPIXEL

4K
ULTRA HD

[Log in/Sign up to view price](#)



Professional IP Solutions

Offer the latest in AI and performance with VIP Vision




NEW

Pro AI Series

4.0 MEGAPIXEL **6.0** MEGAPIXEL **4K** ULTRA HD

The next generation in AI to drive your installs

Deliver amazing AI features with improved camera performance & image quality



AI People & Vehicle Detection
Gen. 2

Improved AI Detection

Up to 99% AI detection accuracy of people and vehicles when using AI motion detection or video rules. AI detects people up to 12m and vehicles up to 18m (2.8mm lens).



AI Scene Adaptive

AI Scene Optimisation

Using deep learning algorithms, the camera will optimise in-camera settings such as WDR, exposure and brightness to automatically to deliver the best video evidence result.



AI Quick Search

AI Quick Search

When paired with an AI NVR, your camera enables rapid footage search via clothing or vehicle colour when using AI motion detection. Quickly zero in on all key playback events.

Eliminate false alarms with AI Person & Vehicle Detection

AI

ARTIFICIAL INTELLIGENCE

Huge range to suit whatever the job requires

18 different models in 4MP, 6MP and 8MP to cater to almost every installation



4.0
MEGAPIXEL

6.0
MEGAPIXEL

4K
ULTRA HD

- AI People & Vehicle Detection Gen. 2
- AI Scene Adaptive
- AI Quick Search
- Starlight Camera

WARRANTY
4
YEARS
WARRANTY

VIP vision

Pro AI Series Fixed Lens Cameras

- Available in vandal dome, bullet or turret
- Next generation image quality & AI features
- 4.0/6.0/8.0MP@25fps, wide angle 2.8mm lens, up to 30m infrared, Starlight, microSD, WDR, IP67 weather rated (IK10 dome)

4.0 Megapixel	6.0 Megapixel	8.0 Megapixel
VSIPP-4BIRG-I2 (Bullet)	VSIPP-6BIRG-I2 (Bullet)	VSIPP-8BIRG-I2 (Bullet)
VSIPP-4DIRD-I2 (Dome)	VSIPP-6DIRD-I2 (Dome)	VSIPP-8DIRD-I2 (Dome)
VSIPP-4DIRG-I2 (Turret)	VSIPP-6DIRG-I2 (Turret)	VSIPP-8DIRG-I2 (Turret)

[Log in/Sign up to view price](#)



4.0
MEGAPIXEL

6.0
MEGAPIXEL

4K
ULTRA HD

- AI People & Vehicle Detection Gen. 2
- AI Scene Adaptive
- Starlight Camera

WARRANTY
4
YEARS
WARRANTY

VIP vision

Pro AI Series Varifocal Cameras

- Available in vandal dome, bullet or turret
- Next generation image quality & AI features
- 4.0/6.0/8.0MP@25fps, 2.7~13.5mm motorised varifocal lens, up to 60m infrared, Starlight, microSD, WDR, IP67 weather rated (IK10 dome)

4.0 Megapixel	6.0 Megapixel	8.0 Megapixel
VSIPP-4BIRMG-I2 (Bullet)	VSIPP-6BIRMG-I2 (Bullet)	VSIPP-8BIRMG-I2 (Bullet)
VSIPP-4DIRMD-I2 (Dome)	VSIPP-6DIRMD-I2 (Dome)	VSIPP-8DIRMD-I2 (Dome)
VSIPP-4DIRMG-I2 (Turret)	VSIPP-6DIRMG-I2 (Turret)	VSIPP-8DIRMG-I2 (Turret)

[Log in/Sign up to view price](#)



Professional IP Solutions

Install CCTV, security lighting & alarm in a single camera



Pro AI Series Active Deterrence Turret Cameras

- New range in 6.0MP / 8.0MP with the latest Pro AI Series features
- Superior 24/7 colour low light performance and AI scene adaptive
- 30m infrared illumination for discreet operation pre-detection; White LED light can be customised for always-on or on-trigger
- Red/blue LED light & siren activates on AI people/vehicle detection
- Easy one-tap arming & disarming via phone/tablet application
- Customisable siren tones or voice messages play on trigger
- Speak remotely via the smartphone/tablet application
- Stream up to 6.0MP@25fps / 8.0MP@25fps, fixed lens 2.8mm (97°)
- Built-in dual mics and 1/1 alarm interface (input/output)
- MicroSD slot, H.265+, true WDR (120dB), IP67 weather rated

VSIPP-6DG-ID3
(6.0MP Turret)

VSIPP-8DG-ID3
(8.0MP Turret)

[Log in/Sign up to view price](#)



Infrared -> AI Detection -> Red & Blue Strobe with Siren

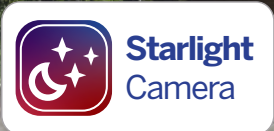


Professional IP Solutions

Panoramic captures entire scenes with a single camera



AI People & Vehicle Detection



Starlight Camera



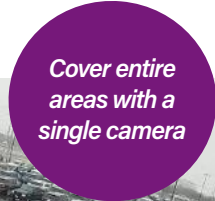
Pro AI Series Panoramic Cameras

- Single sensor with wide angle lens saves on panoramic cost
- 170° view by default, 180° with distortion control disabled
- AI people/vehicle detection via IVS & smart motion detection
- Stream 4.0MP@25fps (default), supports 5MP@20fps
- Wide angle infrared: 20m (bullet), 15m (dome)
- Starlight performance in low-light (colour 0.01lx@F2.0)
- H.265+, microSD slot, true WDR (120dB), SSA and ePTZ
- Built in mic (bullet & dome), 1/1 alarm & audio I/O
- Compact housing with IP67 rating (IK10, dome only)

VSIPP-4DIRW-I
(4.0MP Dome)

VSIPP-4BIRW-I
(4.0MP Bullet)

[Log in/Sign up to view price](#)





Professional IP Solutions

Combine infrared and visible light for incredible results



Dual Lens Technology



Face Capture



24/7 Colour



People Counting



AI People & Vehicle Detection



800m Extended PoE



Ultimate AI Series Dual Lens Turret Camera

- Combines infrared & visible light images for detail in low light scenes
- Combined images preserve colour detail where minimal light is available; infrared simultaneously reveals areas in complete darkness
- AI people & vehicle detection via motion or tripwire/intrusion rules
- AI people counting / flow control (supported by standard NVRs)
- Face Capture for up to 16CH face recognition with AI NVR*
- 50m infrared illumination and customisable white LED light
- White LED light can be customised for always-on or on-trigger
- Stream up to 4.0MP@25fps with fixed lens 2.8mm (97°)
- Built-in microphone and loudspeaker for two-way talking
- Extended Power Over Ethernet up to 800m cable run (@10Mbps)
- Alarm input/output, microSD slot, H.265+, IP67 weather rated

VSIPU-4DIRG-IM
(4.0MP Dual Lens Turret)

[Log in/Sign up to view price](#)



Dual lens & sensor overlays IR and visible light for low-light detail



Professional IP Solutions

Best in AI and image quality with the Ultimate AI Series



Face Capture



People Counting



AI People & Vehicle Detection



Extended PoE



4.0 MEGAPIXEL

4K ULTRA HD



Ultimate AI Series Motorised Lens Cameras

- AI people detection for people counting; flow control use
- People counting / flow control supported by standard NVRs
- Face Capture for additional face recognition with AI NVR*
- AI people/vehicle detection via IVS & smart motion detection
- Stream up to 4.0MP/8.0MP@25fps, Infrared functions
- 1/1.18" sensor, auto iris (DC), True WDR (120dB), ePoE
- Alarm/audio I/O (excl. turret), MicroSD, IP67, IK10 (dome)
- Standard lens (2.7 ~ 12mm), zoom lens (8-32mm)
- * AI NVRs required for face recognition functions

[Log in/Sign up to view price](#)

VSIPU-4BIRM-I (4.0MP Bullet)
 VSIPU-4DIRM-I (4.0MP Dome)
 VSIPU-4DIRMG-I (4.0MP Turret)

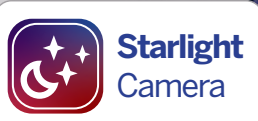
VSIPU-4BIRM-IZ (4.0MP Zoom Bullet)
 VSIPU-4DIRM-IZ (4.0MP Zoom Dome)

VSIPU-8BIRM-I2 (8.0MP Bullet)
 VSIPU-8DIRM-I2 (8.0MP Dome)
 VSIPU-8DIRMG-I (8.0MP Turret)



Professional IP Solutions

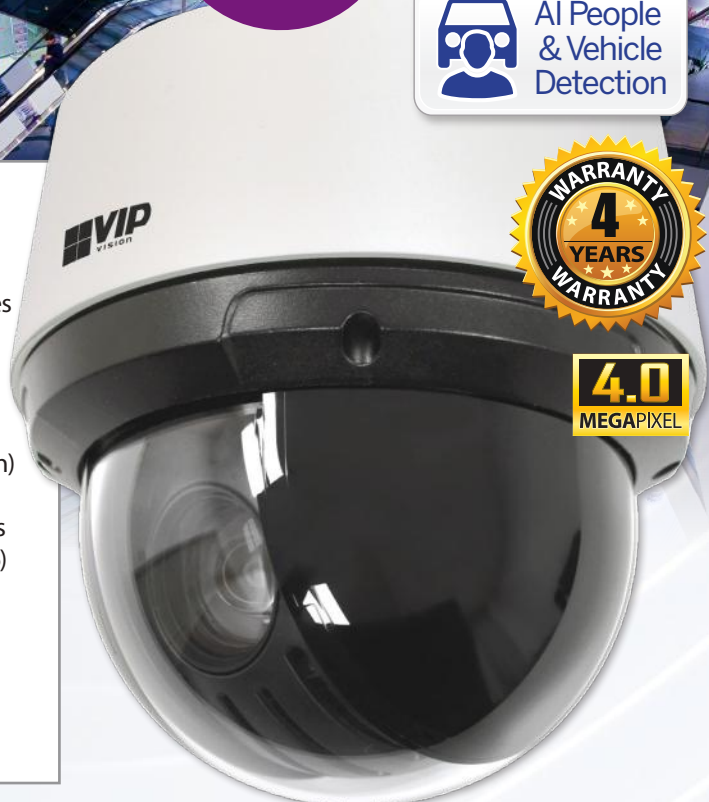
Professional AI and PTZ features in a compact dome



NEW



4.0
MEGAPIXEL



Pro AI Series 4.0MP Compact PTZ Dome

- Only Ø168 x 171mm; discreet size PTZ with great features
- Ideal for where larger sized PTZ would be undesirable
- 25x optical zoom, endless 360° panning and -5°~90° tilt
- Stream up to 4.0MP at 25fps, 5~125mm lens (53~3.3°)
- 6 x infrared illuminators for 100m maximum distance
- AI people & vehicle detection (motion; tripwire/intrusion)
- Trigger alerts and PTZ auto-tracking using AI detection
- Search playback by person and vehicle detection events
- Starlight performance in low-light (colour 0.005lx @ F1.6)
- 1/1 audio and 2/1 alarm interfaces (input/output)
- MicroSD slot, H.265+, true WDR (120dB), IP66 & IK10
- Metal backing plate for install; no back box required

VISIPPTZ-4IRC-1
(4.0MP, 25x Zoom)

[Log in/Sign up to view price](#)

New recessed PTZ speed dome now with AI

High speed, 32x lossless zoom and 50fps - ideal in gaming, banking & more



Pro AI Series 2.0MP Recessed PTZ Dome

- 32x optical zoom, endless 360° panning and 0°~90° tilt
- Ultra fast 500°/s preset pan and tilt speed (350°/s manual)
- Stream up to 2.0MP at 50fps, 4.9~156mm lens (63~2.2°)
- AI face capture for use with face recognition AI NVRs
- AI people & vehicle detection (motion; tripwire/intrusion)
- Trigger alerts and PTZ auto-tracking using AI detection
- 1/1 audio and 2/1 alarm interfaces (input/output)
- MicroSD slot, H.265+, true WDR (120dB), IK10 rated

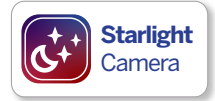
VISIPPTZ-2C-1
(2.0MP, 32x Zoom)

[Log in/Sign up to view price](#)

NEW



Full HD
1080



Updated Pro AI Series PTZ with superior performance



Pro AI Series PTZ Dome Cameras

- 25x and 32x optical zoom, endless 360° panning, -15°~90° tilt
- AI people & vehicle detection (tripwire and intrusion rules)
- Search playback by person and vehicle detection events
- Trigger alerts and PTZ auto-tracking using AI detection
- Stream up to 8.0MP at 25fps (4.0MP@25fps, 2.0MP@50fps)
- Starlight performance in low-light (colour 0.005lx@F1.35)
- LED infrared illumination system up to 150m IR distance
- 1/1 audio interface and 2/1 alarm interface (input/output)
- MicroSD slot, H.265+, true WDR (120dB), IP67 weather rated
- Incl. bracket for wall mount; ceiling drop mount sold separately

VSIPPTZ-2IRP-I
(2.0MP, 25x Zoom)

VSIPPTZ-4IRP-I2
(4.0MP, 32x Zoom)

VSIPPTZ-8IRP-I2
(8.0MP, 25x Zoom)

[Log in/Sign up to view price](#)



Full HD
1080

4.0
MEGAPIXEL

4K
ULTRA HD



Full HD
1080



Pro AI Series 2.0MP Positioning Camera

- Endless 360° pan -90° ~ +90° tilt
- Stream Full HD 2.0MP@50fps
- 4.8 ~ 120mm lens (61~2.8°)
- Starlight; min. illumination 0.005lx,
- 150m distance LED infrared
- AI human/vehicle detection via motion & tripwire/intrusion rules
- Trigger auto-tracking via AI events
- True WDR, audio/alarm I/O, IP67
- Junction box included, wall mount sold separately (VSBKTB730W)



VSIPPTZ-2IRW-I VSBKTB730W
(2.0MP PTZ) (Wall mount)

[Log in/Sign up to view price](#)



4.0
MEGAPIXEL



Pro AI Series 4.0MP Mini PTZ Dome

- 4.0MP@25fps; 2.8 ~ 12mm varifocal lens (97~32°)
- 4x optical zoom, 355° pan and 5° ~ +90° tilt adjust.
- AI people & vehicle detection (motion & IVS rules)
- Starlight; min. illumination colour at 0.005lx
- 15m LED infrared, true WDR, audio I/O, PoE+
- MicroSD slot for edge recording up to 256GB
- IK08/IP66 rated housing, only Ø128mm x 65mm

VSIPPTZ-4IRM-I
(4.0MP PTZ)

[Log in/Sign up to view price](#)



Professional IP Solutions

The ultimate AI PTZ for enterprise applications



AI Auto Tracking



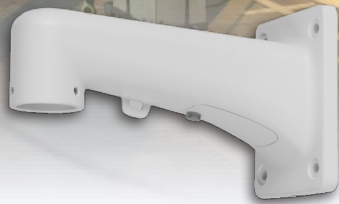
Starlight Camera



AI People & Vehicle Detection



Face Recognition



Ultimate AI Series 8.0MP 40x Zoom PTZ Dome

- Stream 8.0MP 4K Ultra HD (3840 x 2160) at 25fps
- 40x optical zoom, endless 360° panning, -30°~90° tilt
- Long range LED infrared up to 500m IR distance
- Starlight low light colour performance at 0.005lx@F1.35
- AI face capture & face recognition performed in-camera
- AI people & vehicle detection (motion; tripwire/intrusion)
- Search playback by person and vehicle detection events
- Trigger alerts and PTZ auto-tracking using AI detection
- Optical defogging and auto-sensing smart IR/lens wiper
- 1/1 audio, 2/1 alarm, 1 x RS485 and BNC analogue output
- MicroSD slot, H.265+, true WDR (120dB), IP67 weather rated
- Powered via Hi-PoE or included 36VDC power supply

VSPPTZ-8IRU-12
(8.0MP, 40x Zoom)

[Log in/Sign up to view price](#)

See AI PTZ Auto Tracking in action

Scan code to watch our video



Specialty AI cameras with amazing functionality



Panorama Series 8.0MP AI Cameras

- 4 x 2.0MP 1/2.8" sensors; stream 4096 x 1800 at 25fps
- 30m range 180° infrared range & auto ICR day/night
- AI detect vehicle density & set vehicle count thresholds
- AI detection to identify people and vehicles
- AI detect crowds, set thresholds & map on heatmap
- H.265 high efficiency video compression support
- MicroSD card slot for edge recording up to 256GB
- Audio & alarm I/O, IP67 weather & IK10 vandal rated

VSIPPA-8BIR-I (Bullet)
VSIPPA-8DIR-I (Dome)

[Log in to view price](#)

VSBKTA120-SG (Box) VSBKTB300C-SG (Ceiling)
VSBKTA150-SG (Pole) VSBKTB303W-SG (Wall)



Fisheye Series AI Dome Cameras

- Cover 360° day and night with a single camera
- Indoor 5.0MP & outdoor 12.0MP models (@25fps)
- Each model features 10m 360° infrared illumination
- Ceiling/floor/wall dewarp* modes, ePTZ, ePanorama
- AI queue management & AI area people counting
- Built in mic, audio & alarm I/O, microSD slot
- IP67 and IK10 rated (12.0MP model only)
- *Select NVRs support fisheye dewarping

VSIPFE-5IR-I (5.0MP) VSIPFE-12IR-I (12.0MP)

[Log in to view price](#)



*Dewarp NVRs: NVR8PRO7, 16PRO7, 24PRO6, 32PRO16P3, 32ULT, 64ULT



Pinhole Series Cameras

- -2S2: 2.0MP@25fps, 2.8mm (108°), 12VDC only, 35x44mm
- -4M/4L: 4.0MP@25fps, 2.8mm (101°), PoE, 8m cable

VSIPPH-2S2 (Square) VSIPPH-4M + 4L (Lens & module)

[Log in to view price](#)



AI People Counting Camera

- Stereo 2 x 3.0MP for people counting
- Visualise with heatmap & export data
- 10m IR, built-in mic, true WDR, IP67

VSIPLD-3IR (Dual Lens)





Professional IP Solutions



Superb licence plate recognition for your next project



Full HD
1080

4.0
MEGAPIXEL



Traffic Series Varifocal AI ANPR Bullet Cameras

- Available in standard and long-range varifocal lenses
- Capture number plates for vehicles going up to 30km/h
- Stream up to 4.0MP@25fps; superb low light at 0.002lx
- 3.2 ~ 10.5mm lens (standard), 10~55mm lens (long-range)
- Automatic number plate detection distance up to 30m
- White/blacklist control; automatically open gates via ANPR (optocoupler input/output for gate barrier control)
- Identifies vehicle size, colour and travelling direction
- Supports shutter speed windowing; set min/max speed
- Edge enhancement for number plate detail and legibility
- IP67 weather rated housing; includes mounting bracket

VSIPNP-2BIRM-I2
(Standard, 2.0MP)

VSIPNP-4BIRM-IZ
(Long-range, 4.0MP)

[Log in to view price](#)



We can assist with your next ANPR CCTV project





Professional IP Solutions

Rapid deployment solar CCTV with built-in 4G access

NEW



Pro Solar Series 4.0MP 4G Bullet Camera

- Stream 4.0MP (2688 x 1520) at 25fps, 2.8mm lens (102°)
- 50m infrared LED range; 30m warm white LED light
- High-performance *4G data module (suits all networks)
- Back/highlight compensation & true WDR (120dB)
- MicroSD slot for recording at the edge up to 256GB
- *4G SIM, data plan & microSD card sold separately
- PIR + camera detection reduces false detection alarms
- Built-in 5W monocrystalline solar & 10Ah Li-ion battery
- **General mode:** 24 hours (standard camera mode)
- **Sleep mode:** PIR sensing mode, up to 10 days uptime
- H.265 encoding for efficient storage & streaming
- IP67 weather rated housing for outdoor use

VSIPSLR-A41
(4.0MP 4G Camera)

[Log in to view price](#)

See the 4G Solar Bullet in action

Scan code to watch our video



ENSA™

Solar LED Lighting

Power & Illuminate Your Next Install with ENSA™



ENSA™

Solar Powered Lighting & Battery Systems

- Solar systems to power your next installation
- Pre-configured & ready for implementation
- Use for lighting, CCTV, WiFi, access & more
- High conversion rate monocrystalline panels
- Large capacity lithium batteries (LiFePO4)
- Fully adjustable LED lighting modules
- 180lm/W with microwave motion sensor
- Set parameters with included remote
- Optional bird spike strip included
- Ø50~60mm diameter pole mount



Configure Use
with Included
Remote



*Pole/base not included with SSL-B units, sold separately

56W Solar System

- 56W Monocrystalline Panel
- 218Wh LiFePO4 Battery
- 20W 180lm/W Area Light
- 145 x 75° Beam Angle
- 12.8VDC Output Voltage

SSL-B20MC

80W Solar System

- 80W Monocrystalline Panel
- 320Wh LiFePO4 Battery
- 30W 180lm/W Area Light
- 145 x 75° Beam Angle
- 12.8VDC Output Voltage

SSL-B30MC

120W Solar System

- 120W Monocrystalline Panel
- 500Wh LiFePO4 Battery
- 50W 180lm/W Area Light
- 145 x 100° Beam Angle
- 12.8VDC Output Voltage

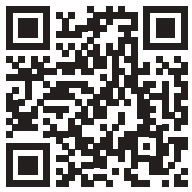
SSL-B50MC

180W Solar System

- 180W Monocrystalline Panel
- 1200Wh LiFePO4 Battery
- 60W 180lm/W Area Light
- 145 x 100° Beam Angle
- 25.6VDC Output Voltage

SSL-B60MC

Log in/Sign up to view price



Units Construction VIP Vision™ Timelapse

Watch on YouTube



Solar Powered CCTV Surveillance

- 120W & 180W Solar Systems + AI surveillance
- Fully configured and ready for installation
- Remote view via 4G* or 5GHz wireless links
- 4.0MP IR PTZ included, other options available*
- Surveillance grade microSD storage included
- 500Wh or 1200Wh high capacity batteries

*SIM sold separately, camera changes may increase cost. Built pole & base delivery dependent on area, contact your sales rep for details.

SLR-B120-4G/4W SLR-B180-4G/4W
(120W Panel, 4G/WiFi) (180W Panel, 4G/WiFi)

[Log in to view price](#)



Hinged Pole & Base Kits

- 4.5m hinged galvanised pole, no need for ladder or for working at heights
- Heavy duty, reinforced base 500kg, available assembled or unassembled

SLR-POL4.5H (4.5m pole)
SLR-POLBASE (Unassembled)
SLR-POLCONC(Assembled Base)



Professional HDCVI Surveillance

Upgrade existing coax installs to AI with Securview



Compact Series AI HDCVI DVRs

Pro Series AI HDCVI DVRs

- Face recognition up to 2 channels (via BNC only)
- AI person/vehicle detection via IVS (2CH) & SMD (8CH)
- Records 8.0MP@7fps, 5.0MP@12fps and 2.0MP@25fps
- Supports HDCVI, HDTV, AHD, Analogue & IP inputs
- H.265 compression, HDMI/VGA, remote view

- Face recognition up to 2 channels (via BNC only)
- AI person/vehicle detection via IVS (2CH) & SMD (8CH)
- Records 8.0MP@7fps, 5.0MP@12fps and 2.0MP@25fps
- Supports HDCVI, HDTV, AHD, Analogue & IP inputs
- Up to 2 x HDD bays (20TB total), H.265, alarm I/O

CVR8COM3 (8CH, 1 HDD) **CVR16COM3** (16CH, 1 HDD)

CVR8PRO5 (8CH, 2 HDD) **CVR16PRO5** (16CH, 2 HDD)

[Log in to view price](#)



Pro 2.0MP Fixed Lens HDCVI Cameras

- 2.0MP, 2.8mm lens (109°), 30m infrared illumination
- 0.001lx colour, true WDR, HDCVI/AHD/TVI/SD switchable
- Built-in microphone, 12VDC, IP67 weather rated

VSCVI-2DIRG (Turret) **VSCVI-2BIRG** (Bullet)

[Log in to view price](#)



Pro 2.0MP Motorised VF HDCVI Cameras

- 2.0MP, 2.7~13.5mm (108° ~ 30°), up to 80m infrared
- 0.001lx colour, true WDR, HDCVI/AHD/TVI/SD switchable
- Built-in microphone, 12VDC/24VAC, IP67 (IK10 dome)

VSCVI-2DIRMD (Dome) **VSCVI-2BIRMG** (Bullet)

[Log in to view price](#)

Cameras support dual power & interface with all coax DVRs



Pro 5.0MP Fixed Lens HDCVI Cameras

- 5.0MP, 2.8mm lens (111°), up to 30m infrared
- 0.001lx colour, true WDR, HDCVI/AHD/TVI/SD
- Audio I/O, 12VDC, IP67 (IK10 dome)

VSCVI-5BIRG2 (Bullet) VSCVI-5DIR2.8D (Dome) VSCVI-5DIRG2 (Turret)

[Log in to view price](#)



5.0 MEGAPIXEL



Pro 5.0MP Motorised VF HDCVI Cameras

- 5.0MP, 2.7~13.5mm (113°~31°), up to 80m IR
- 0.001lx colour, true WDR, HDCVI/AHD/TVI/SD
- Audio I/O, 12VDC/24VAC, IP67 (IK10 dome)

VSCVI-5BIRMG2 (Bullet) VSCVI-5DIRMD (Dome) VSCVI-5DIRMG2 (Turret)

[Log in to view price](#)



5.0 MEGAPIXEL



Pro Series 8.0MP HDCVI Cameras

- 8.0MP, 2.8mm (111°), 3.7~11mm (112~46°)
- Huge 1/2" sensor, ultra low light 0.005lx
- True WDR (120dB), 2D/3D DNR, (PIR detect)
- HDCVI/AHD/TVI/SD switchable, IP67, 12VDC

VSCVI-8BIRG (Bullet) VSCVI-8BIRP (PIR Bullet) VSCVI-8DIRMG (VF Turret)

[Log in to view price](#)



4K ULTRA HD



Ultimate Series 8.0MP HDCVI Cameras

- 8.0MP, 3.7 ~ 11mm (112°~46°), auto iris
- 0.005lx, 50m/100m IR (dome/bullet), true WDR
- Audio/alarm I/O, HDCVI/SD, 12VDC/24VAC
- On-camera zoom adjustment, IP67 (IK10 dome)

VSCVI8MPFBIRM (Bullet) VSCVI8MPVDIRM (Dome)

[Log in/Sign up to view price](#)



4K ULTRA HD



Professional IP Solutions

Secure your CCTV and alarm installs with SECCAB



**Fits up to
2RU Sized
NVR**



**Monitor & NVR sold separately*



SECCAB: The all-in-one vertical security cabinet for CCTV & alarms installations

- Lockable wall mounted storage of CCTV & alarm systems
- Fit up to 24" monitor, with 50/75/100 VESA mounts*
- Capacity: 2RU, 240~480mm width, 465mm depth
- Integrated 4 x outlet powerboard & 2 x cabinet locks
- Cable management knockouts from all cabinet sides
- SPCC steel construction and white powder coating
- Suits vertical port input monitors (HDMI adapter available)

SECCAB
(2RU Cabinet)

[Log in/Sign up to view price](#)

FLASHVIEW™

Visual Sensation Delivered

Professional CCTV grade monitors and accessories



FLASHVIEW™ Full HD CCTV Monitors

- Full HD 1080p (1920 x 1080)
- Made for 24/7 CCTV operation
- 1 x HDMI and 1 x VGA inputs
- VESA 75 (22") / 100 (24") mounts
- Vertical inputs for SECCAB LCDFL24G

LCDFL22G
(22" 1080p)

LCDFL24G
(24" 1080p)

FLASHVIEW™ 2-way 4K HDMI Splitter

- 1 x HDMI input, 2 x HDMI output
- Supports up to 4K Ultra HD & 3D
- Easy plug-and-play installation
- Includes 5VDC power supply

HDMI-SPL2P3
(HDMI Splitter)

FLASHVIEW™ HDMI Extender Over CAT6

- Transmit HDMI via CAT6 up to 50m
- Supports up to Full HD 1080p & 3D
- Up to 225MHz/2.5Gps bandwidth
- Incl. 2 x 5VDC 1A PSUs

HDMI-EXT50M
(HDMI over CAT6)

FLASHVIEW™ 4K Copper/Fibre HDMI Cables

- 4K@60Hz, 18Gbps; also in easy-install cables



HDMI-1C (1m)

HDMI-2C (2m)

HDMI-5C (5m)

HDMI-10C (10m)

HDMI-10F (Fibre, 10m)

HDMI-20F (Fibre, 20m)



HDMI-10FC (Fibre, 10m)

HDMI-20FC (Fibre, 20m)

HDMI-30FC (Fibre, 30m)

HDMI-50FC (Fibre, 50m)

Wall and Ceiling Monitor Brackets



LCDBKT-A15T (13~30" Wall Mount)

LCDBKT-A30TS2 (17~42" Tilt & Swivel Wall Mount)

LCDBKT-A50T2 (37-70" Television Wall Mount)

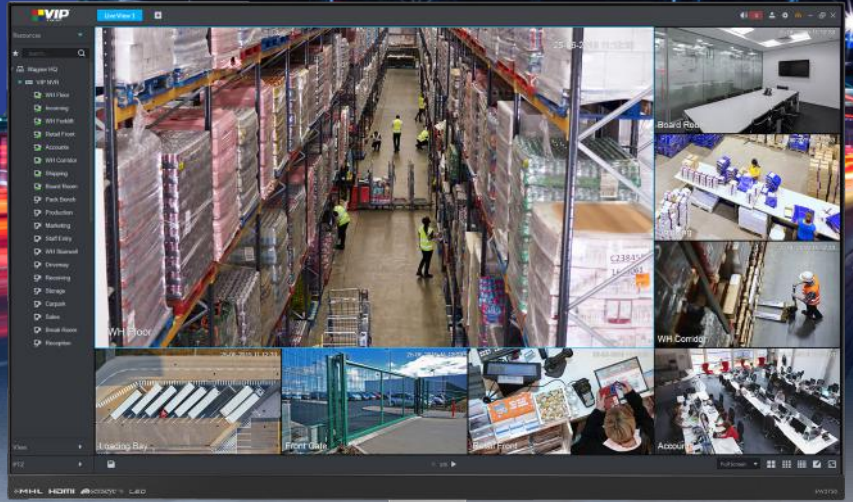
LCDBKT-A35C (23 - 42" Tilt & Swivel Ceiling Mount)



Professional IP Solutions

Centrally managed systems with VIP Vision and DSS

Includes 256 Video Channel Licences



VIP Vision Security Management Centre

- DSS GUI makes large system management simple
- Centralised CCTV, access control & intercom management
- Set different access rights hierarchies per user/group
- Pre-activated 256 video channels, cost effective licensing
- Manage building access w/ RFID tag & fingerprint scan
- Event & alarm logging, searching, timestamp & overlay
- Create impressive live video walls displays
- Intelligent functions + ANPR, AI & face recognition
- PTZ control/tour, fisheye dewarp, audio, alarm, etc.
- Manual and automatic system backup/restore
- Built-in 1TB HDD - supports 3x 2.5" HDDs for storage
- High reliability with hot standby & hot swapping HDDs



Manage combined systems:

UP TO **256** VIDEO CHANNELS UP TO **1000** INTERCOM DEVICES UP TO **64** CONTROLLED DOORS

*Surveillance grade monitors sold separately to NVR-SMC1

NVR-SMC1
(1RU size)

[Log in/Sign up to view price](#)

Deliver a great result & save time on your next installation



19" Rackmount Data Cabinets

- Available in wall & floor mount designs
- 4RU to 18RU; 450mm or 600mm depths
- Lockable, 5mm tempered glass door, fixed shelf incl.*
- Removable side panel; holes for cable management

Pre-assembled Wall Mount Cabinets:

RMC-B4U450W2 (4RU 450mm)

RMC-B6U450W2 (6RU 450mm)

RMC-B12U450W2 (12RU 450mm)

Need a bigger cabinet? Just ask your sales rep!

We also stock patch panels, blank panels, power strips, fans, cable management and more.



Log in to view price

Cabinets available up to 47RU size

*Fixed shelves included in some cabinets only

We pre-install HDDs for you free of charge

Add microSD cards to your IP cameras for automatic network replenishment



VIP Vision MicroSD Cards

- Perfect for ANR & edge recording
- Available in 32, 64, 128 & 256GB
- UHS-I class 10 microSDHC
- 80MB/s read, 10MB/s write

VIPSD32GB

VIPSD128GB

VIPSD64GB

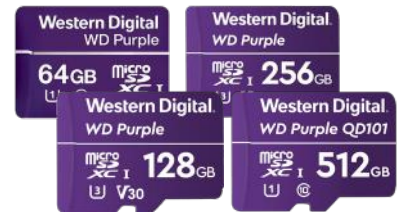
VIPSD256GB



Seagate SkyHawk HDDs

- Surveillance grade built for 24/7 use
- Available in capacities up to 20TB
- Up to 550TB/year workload rating
- 1.5M hrs MTBF, 3 year warranty

Ask us about our best deals on Skyhawk HDDs



Western Digital.

Surveillance MicroSD Cards

- Built for continuous data writing
- Ideal for edge recording applications
- Available in capacities up to 1TB
- Can be rewritten over 1000 times

Ask us about our best deals on WD microSD cards

Price match guarantee on CCTV storage

We strictly use & recommend CCTV grade storage - get the best deal from Rhino



Professional IP Solutions

Build impressive video walls using up to 9 displays



Add up to 9 displays to support large CCTV installs



NVD-A6 (6x HDMI)
NVD-A9 (9 x HDMI)

[Log in to view price](#)



Network Video Decoders

- Network-roaming decoder displays all video feeds
- Video wall splicing for up to 36 channels per monitor
- Split screen control with zoom/merge/roam/overlay
- Support for audio, alarm, two-way talk, RS232, RS485
- Fisheye dewarp & multi-video split display
- Manage via web browser or VIP Vision™ SmartPSS
- **NVD-A6:** Decode 8CH 4K / 32CH 1080p / 128CH D1
- **NVD-A9:** Decode 12CH 4K / 48CH 1080p / 144CH D1



Pro Network PTZ Keyboard

- RS232, RS485, USB, RJ45 connection
- Control PTZ and NVR/DVRs
- Joystick, 3.2" LCD, presets keyboard

VSIPPTZKBV2



SECURVIEW

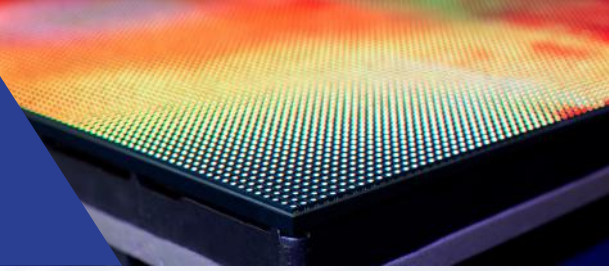
LED Infrared Illuminators

- Flood light style illuminators, IP66 rated
- Models with beam angle & range:
 - 11W: 30° (90m) / 60° (50m) / 120° (20m)
 - 28W: 30° (170m) / 60° (100m) / 120° (50m)
 - 60W: 30° (280m) / 60° (150m) / 120° (75m)

All wattages in 30/60/120°: **VSIR11W VSIR28W VSIR60W**



Deliver a great result & save time on your next installation



Passive HDCVI Baluns

- Coax video signal over UTP
- Supports HDCVI/TVI/AHD signals
- 250m/400m range (1080p/720p)
- Supports CAT5/5e/CAT6 UTP



- VSBALHDP (Balun pair)
- VSABLHDP4 (4 Port)
- VSABLHDP8 (8 Port)



Ethernet over Coax Extenders

- Data/Power (via PoE switch) over coax
- 400m@100Mbps, 1000m@10Mbps*
- Combine converter pair and transmitter/receiver; (*RG59 coax)



Extend Up to 1000m

- VSEOCPAIRV2 (Converter Pair)
- VSEOC-ATX (Transmitter)
- VSEOC-ARX (Receiver)



HDCVI Output Controller

- Switch compatible cameras between coax technologies without HDCVI DVR or tester
- Plug & play operation
- Switch between HDCVI, HDTVI, AHD & analogue
- Use with cameras with switchable video output
- 2 x AAA batteries included



Easy In-line Use

VSSELECT101

Log in to view price



HDCVI Video Isolator

- Solve image interference caused by ground loops
- 75Ω BNC male to female
- 100MΩ insulation resistance
- 800V isolation voltage
- 600V ESD contact discharge
- 4KV 10/700us surge protection
- 400mm cable length



VSGLI



High Fidelity CCTV Microphones

- 12VDC microphones for use with CCTV cameras
- Up to 150m² pickup range omni-directional
- Digital noise reduction and voice enhancement
- Available in plastic or aluminium alloy housing

- VSAMICA2 (Plastic)
- VSAMICB2 (Metal)

Log in to view price



CCTV & Alarm Warning Signs

- Quality corflute signs & stickers for visual deterrence
- Available in A3 (sign only) and A4 sizes
- VSCDSCS: Small stickers 100 x 130mm size

Corflute Portrait Signs:

- VSA24 (A4 size)
- VSA24A3 (A3 size)

Warning Landscape Stickers:

- VSCDSC (4 x A4 CCTV)
- VSCDSA (4 x A4 alarm)
- VSCDSCS (4 x Small CCTV)

SECURVIEW

Professional Vehicle Surveillance

The total in-vehicle camera and GPS tracking solution

Monitor vehicle cameras, set geo-fences and playback GPS location

Full HD
1080



SECURVIEW

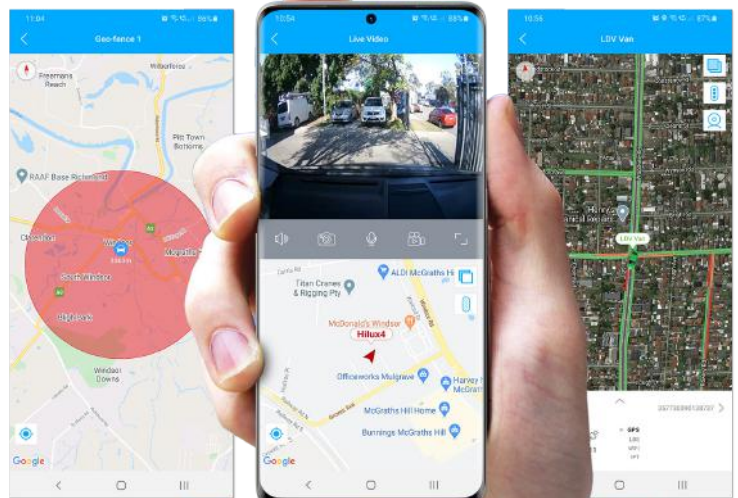
4G/WiFi In-Vehicle Surveillance and GPS Tracking System

- 1080p road-facing windscreen camera
- Separate B&W cabin camera (ext. lead available)
- Real-time, precision GPS tracking with set geo-fencing, event tracking playback
- Voice chat and live view video at any time from connected app; store via microSD card
- Driver behaviour live alerts for speed; g-sensor
- Manage multiple units and send device commands via smartphone app or PC
- Free lifetime licence for app & online platform
- Includes power harness, mounting kits, alarm button, relays & more

MDVR-J400
(SIM card, phone & SD card not included)

Log in to view price

The best in vehicle monitoring with **free** lifetime management platform access via PC or smartphone



Securview mobile CCTV for your next vehicle installation



4G / WiFi / GPS Mobile HDCVI DVR

- 8 channel DVR records 1080p / 2.0MP@25fps
- Built-in precision GPS for coordinates overlay
- 4G for remote view & WiFi for footage access
- 2 x 2.5" SATA HDD bays and SD card storage
- 6~36VDC, audio, alarm, RS485 and RS232 inputs
- Single DIN, vibration-dampening chassis
- Combine with HDCVI mobile cameras below



Full HD
1080

MCVR-GPS8GW
(8CH, 2 HDD)

[Log in to view price](#)

M12 Camera Leads
MCVR-CABLE3M (3m)
MCVR-CABLE6M (6m)

MCVR-CABLE12M (12m)
MCVR-CABLE18M (18m)
MCVR-VGACABLE3M (0.3m, VGA)



7" and 10" LCD Vehicle Monitors

- Avail in 7" and 10" models
- 12VDC input, incl. brackets
- HDMI / VGA / AV / BNC*
(*excludes LCD7SD3)

LCD7SD3 (7" 480p)

LCD10SD3 (10" 720p)

LCD10FHD (10" 1080p)



Mobile Wedge Dome

- 2.0MP@25fps, 2.8mm (111°)
- 20m IR, 0.005lx low light
- Auto day/night (IR cut)
- IP67 / IK10, M12 connector
- Optional shield bracket



VSCV2MPVDIRFTV3
(Bumper Bullet)
VSBKTA201W (Shield)



Mini Dome Camera

- Stream 2.0MP (1920x1080)
- 2.8mm lens (H: 101° view)
- Built-in mic & 20m infrared
- IP67 rated metal body
- Auto day/night (IR cut filter)
- Heavy duty M12 connector

VSCVIM-2DIR
(Mini Dome)



Bumper Camera

- Stream 2.0MP (1920x1080)
- 2.8mm lens (H: 106° view)
- Built-in mic & 20m infrared
- IP67 rated metal body
- Auto day/night (IR cut filter)
- Heavy duty M12 connector

VSCVIM-2CIR
(Bumper)



Twin Dash Camera

- Stream 2.0MP@25fps
- **Rear:** 2.1mm (164° view)
- **Front:** 2.8mm (127° view)
- Built-in mic & 3m infrared
- Auto day/night (electronic)
- Adhesive adjustable mount

VSCVIM-2TT
(Dash Cam)



Bumper Bullet

- Stream 2.0MP (1920x1080)
- 2.8mm lens (H: 106° view)
- Built-in mic & 20m infrared
- IP67 rated metal body
- Auto day/night (IR cut filter)
- Heavy duty M12 connector

VSCVIM-2BT
(Bumper Bullet)



Professional Vehicle Security

Wide range of mobile safety and security for vehicle installs



Auto-Arm
2-point Cut
Valet Mode



Advanced Car Alarm & Immobiliser

- Top quality Australian Standards Approved car alarm
- Door, bonnet and boot protection
- Integrated central locking relays, keyless entry
- 1 x AU standards approved 3-point immobiliser
- 2 x Water resistant rolling code keyfobs
- 1 x Mini coded backup battery siren
- 1 x Intelligent glass break sensor

RAV3



Two-point Keypad Immobiliser

- 70% of vehicle thefts are due to stolen keys
- Code must be entered before ignition
- 3min lock after 3 incorrect attempts
- Vehicle protection against key theft
- Automatic arm; less disruption to normal use
- High security all-black wiring harness
- Valet mode: temporary auto arming bypass

IM007



Heavy Duty Central Locking Kits & Door Motors

- Superior quality central locking kits, in 2 door and 4 door kits
- High torque motors ideal for use with rigid door locking mechanisms
- Individual door locking motors & cable lock adapters available

CLKHD (4-door kit) CLKHD2D (2-door kit) DLHD101 (Master motor) DLHD102 (Slave motor) CLKHDCABLE (Lock adapter)

[Log in to view price](#)



Mobile safety, GPS tracking, vehicle cameras & accessories



4G GPS Vehicle Tracker

- GPS and 4G* / GSM antennas
- for 11 ~ 36VDC vehicles
- Real-time speed & location tracking
- <200g lightweight, 105 x 65mm
- Online platform management including historical reports, visit www.rhinotracks.com.au



RHINOTRACKS-ST5
(*SIM not incl.)

Full HD
1080



Rhino

1080p Dash Cam (16GB)

- 3" LCD, 1080p camera with WDR
- LED light, time/date/number plate footage overlay, incl. mount bracket, charge cables, 16GB microSD

MDVR-HDV7



Rhino

2.4GHz Reverse Kit

- Connects in seconds,
- 12m transmission distance
- 7" LCD, 2 AV channels
- 420TVL 2.8mm lens (120°)
- 30m infrared, IP67 rated
- 12V/24VDC, incl. remote

MSKIT-WRC



Rhino

Reversing Sensor Kit

- Four sensor reverse kit
- 40KHz ultrasonic sensors
- 2.5m detect distance
- Includes siren, sensors, control box and hole saw
- 12VDC 20~200mA

MSKIT-RV4



Rhino

4.3"/7.0" LCD Monitors

- 4.3" (flip up display) & 7.0" (incl. stand), 480 x 234 (16:9)
- Triggered on reverse
- 2/4 video inputs (4.3"/7.0")
- Includes mounting kits
- 12VDC power input

MSMON-4 (4.3")

MSMON-7 (7.0")



Rhino

Relays & Pin Switches

- 40A, 12VDC, 5 pin relay
- PINSW: metal pin switch, 5 x 65mm, screw adjust
- 409: 35x53mm straight
- 410: 45x60mm right angle

40ARELAY (Relay)

PINSW (Metal)

PIN409 (Straight)

PIN410 (Right angle)

Rhino Vehicle safety and reversing assist cameras



Bracket/
flush (18mm),
400TVL, IP67

MSCAM-B18

Flush (18mm),
420TVL, 5m IR,
IP67

MSCAM-FI18

Bracket (28mm),
420TVL, 5m IR,
IP67

MSCAM-BI28

Screw mount
(28mm),
420TVL, IP67

MSCAM-S28

Number Plate
camera, 420TVL,
5m IR, IP67

MSCAM-NPI

Bumper mount,
420TVL, 5m IR,
IP68

MSCAM-TI

Mini dome
mount, 420TVL,
5m IR, IP67

MSCAM-MD

Mini dome with
audio, 420TVL,
5m IR, IP67

MSCAM-MDA

Log in/Sign up to view price

Compatible for use with HDCVI mobile DVRs (requires connector change to M12 aviation connector).



Professional IP Solutions

Scalable IP intercom solutions perfect for apartments



Connect up to 200 indoor monitors



Full HD 1080



Apartment Series IP Door Station

- 1/2.9" 2.0MP camera with wide 158° view angle
- Dial to call each residence individually
- NFC card reader; access up to 10,000 cards
- Connect with intercom monitor(s) via network
- Backlit interface & night-time white light
- Power over Ethernet (12VDC, 802.3af)
- IP55/IK08 weather & vandal resistant front plate
- Avail. with flush or surface box (sold separately)

INTIPADSD
(Door Station)

Mounting Boxes
INTIPADSDFB (Flush)
INTIPADSDSB (Surface)

We can help with your next intercom project

Ask us about intercom pre-configuration to save you time on your next install



Touchscreen IP Indoor Intercom Monitors



- 7" TFT capacitive touch screen (1024 x 600)
 - Record and snapshot video calls/messages
 - Prevent unwanted calls with Do Not Disturb mode
 - Alarm system integration, microSD storage*
 - Powered via PoE or 12VDC
- * Unit must be opened to access microSD slot, microSD card sold separately



INTIPMONKW
(White)



INTIPMONKB
(Black)

Log in to view price

Intercom solutions for multi-residence buildings & duplexes



2 Button Residential Door Stations

Calls monitor groups; call up to 10 monitors per button (20 total)
 2.0MP wide camera (140°), NFC card unlock, PoE/12VDC, alarm I/O, RS485, aluminium chassis, surface mount
 Add door expander to control a second strike via monitor



INTIPDSS2
(2-Button)



4 Button Residential Door Stations

Calls monitor groups; call up to 10 monitors per button (40 total)
 2.0MP wide camera (140°), NFC card unlock, PoE/12VDC, alarm I/O, RS485, aluminium chassis, surface mount
 Add door expander to control a second strike via monitor



INTIPDSS4
(4-Button)

Intercom 2-wire upgrades and 4-wire replacement kits



2-Wire Residential Intercoms

Upgrade existing intercoms using existing 2-wire cabling, add remote view capability with network controller, 7" TFT capacitive touch-screen, add microSD 64GB, record / snapshot video calls/messages; door station includes surface box

INTIPMON2W2
(7" Monitor)

INTIPRDSG
(Door Station)

INTIPPOE2W2
(Network Controller)

[Log in to view price](#)



4-Wire Intercom Kit

Quick replacement for 4 & 6 core systems. Slim door station, monitor, 12VDC PSU; Add up to 3 monitors
 *Local only, no remote view possible

INTKIT-A1
(Monitor, door station, PSU)

INTKIT-A1-MON
(Additional monitor)

[Log in to view price](#)



Professional IP Solutions

New PoE intercom kits to save you time and money



Residential Complete IP Intercom Kit (J Series)

INTIPRKITJ2
(Complete Kit)

- Surface mount intercom kit with door station, monitor & switch
- 1 x 1MP intercom door station
- 1 x 7" black indoor monitor
- 1 x 4-port 100M PoE switch
- Remote view via devices/app

Switch to white monitor at no extra charge



Residential Complete IP Intercom Kit (G Series)

- Surface mount intercom kit with door station, monitor & switch
- 1 x 2MP intercom door station
- 1 x 7" white indoor monitor
- 1 x 4-port 100M PoE switch

INTIPRKITG-P
(Complete Kit)



Log in to view price



Door Unlock Module

- Unlock a 2nd door via RS485
- *Cannot trigger independently

INTIPDM
(Expander)

Single residence IP door stations call up to 10 monitors



G Series Door Station

2.0MP (160°), 2-wire or Ethernet, 12VDC / PoE, alarm I/O, RS485, flush or surface mount (incl. surface), IP65 front panel

INTIPRDSG
(2.0MP)

INTIPRDSGFB (Flush)



J Series Door Station

1.0MP (122°), 12VDC / PoE, alarm I/O, RS485, NFC card reader, surface mount, IP65 front panel

INTIPRDSJ
(1.0MP)

[Log in to view price](#)



D-Series Door Station

2.0MP (158°), 12VDC / PoE, alarm I/O, RS485, NFC card reader, code keypad, flush or surface mount, IP65 front panel

INTIPRSD (Door Station)

INTIPADSDFB (Flush)

INTIPADSDB (Surface)



IP PoE Indoor Monitors

7" touchscreen (1024 x 600), PoE / 12VDC, microSD storage (inside unit, sold separately), alarm integration, flush wall bracket included

INTIPMONKW (White)

INTIPMONKB (Black)



IP PoE Handset Monitors

7" touchscreen (1024 x 600), wall or desktop mount, PoE / 12VDC, microSD storage, flush wall bracket included

INTIPMONDWH2 (White)

INTIPMONDBH2 (Black)

INTIPMONDH-B (Desk mount)



Residential & Apartment IP Monitor

7" TFT capacitive touchscreen (800 x 480 pixels), add microSD card for up to 32GB storage, record / snapshot video calls/messages; DND

INTIPMON (White)

INTIPMONPOE (PoE Switch)



Residential IP PoE Large Indoor Monitor

10" TFT touch-screen (1024 x 600), wall mount, PoE / 12VDC, record & snapshot, microSD card storage

INTIPMONGBL
(Black)

[Log in to view price](#)





Professional IP Solutions

Professional access control made easy with VIP Vision



Professional & Compact IP Access Controllers

- Quick-install, affordable access control in small to medium enterprise
- Available in 2-door 2-way, 4-door 1 & 2-way & 8-door 1-way controllers
- Access management & CCTV integration via free Smart PSS software
- Cascade up to 255 slave controllers for over 2000 total door capacity
- Configure users/roles & departments; up to 100,000 cards & 150,000 records
- Anti-passback, multi-door unlock, multi-card open, door time-out & more
- ACCON-2C41: Compact plastic body, 4 x readers, 9/5 input/output, 9~15VDC
- ACCON-2P22: Pro metal body, 4 x readers, 8/4 input/output, 240VAC
- ACCON-2P41: Pro metal body, 4 x readers, 9/5 input/output, 240VAC
- ACCON-2P42 & 2P81: Pro metal body, 8 x readers, 20/12 input/output, 240VAC

ACCON-2C41
(Com, 4-door 1-way)

ACCON-2P22
(Pro, 2-door 2-way)

ACCON-2P41
(Pro, 4-door 1-way)

ACCON-2P42 / 2P81
(Pro, 4-door 2-way)
(Pro, 8-door 1-way)



Access Control Readers

- Professional card, keypad & fingerprint access readers, LED indicators & backlit buttons, tamper protection
- NFC card readers (13.56MHz), keypad code entry & fingerprint entry models



ACRDR-2PC

ACRDR-2LKC

ACRDR-2MKC

ACRDR-2SC

ACRDR-2SKC

ACRDR-25FC

[Log in/Sign up to view price](#)

Watchguard access: Perfect for standalone installations



Standalone Access Control Systems

- 125KHz card & code access, setup via reader
- Door chime relay, tamper switch & vandal lockout
- Data I/O bus for multi-station systems
- Add up to 3 x slave ACRDR100 access readers
- Add split decoded controllers for additional security
- Units include 2 x access control key cards; 12VDC

Split-Decoder for Standalone Systems

- Splits unlock signal from reader, prevents sabotage
- Terminals for alarm integration, 3 output relays
- Connect up to 3 keypads/readers; incl: 2 x keyfobs
- Power input: 12~24VDC auto-adjusting



ACRDR100
(IP55 rated)



ACRDR102
(IP55 rated)



ACRDR103
(IP65 rated)



ACRDR101
(incl. 2 keyfobs)

*125KHz cards also available

[Log in/Sign up to view price](#)



Electric Strikes and Electromagnetic Door Locks

*MAGLOC brackets also available



Steel body, mortise-mount, fail-secure, 12VDC

ACLOC100



Steel body, surface-mount, fail-secure, 12VDC

ACLOC101



Chrome body, surface-mount, fail-secure, 12VDC

ACLOC104



Stainless steel, mortise, fail-safe/secure, monitored, 12VDC

ACLOC102



Stainless steel, mortise, fail-safe/secure, monitored, 12/24V AC/DC

ACLOC105



Aluminium-zinc, surface-mount, fail-safe, 270kg holding force, 12V/24VDC

MAGLOC100S



Aluminium-zinc, mortise-mount, fail-safe, 270kg holding force, 12V/24VDC

MAGLOC100M

[Log in/Sign up to view price](#)



ACDSW100



ACDSW101



ACDSW102



Door Release Switches

- Door releases, 500,000 MTBF
- **ACDSW100:** Heavy duty, sandblasted aluminium, 3 outputs (N.O, N.C, COM)
- **ACDSW101:** Slim, stainless steel, 2 outputs (N.O, COM)
- **ACDSW102:** Touch button, aluminium, 3 output (N.O, N.C, COM), red/green status LEDs, adjustable output timer 1~40s



13.56 MHz



13.56MHz RFID Card/Keyfobs

For VIP Vision Access Control systems
Mifare NFC chip, read-only memory

ACKEY103
(Card, 1pc)

ACKEY104
(Keyfob, 1pc)



Professional IP Solutions

Connect and power your installations with VIP Vision



Supports Hi-PoE up to 60W per port



Rackmount Managed Fast Hi-PoE Switches

- Fast 100Mbps PoE+ Base-T device ports
- Gigabit 1000Mbps Base-T & SFP Base-X uplink ports
- L2 Managed switch for security & switch customisation
- 30W per port with 2 x 60W orange Hi-PoE ports
- Total PoE load: 240W (-SWA16), 360W (-SWA24)
- Rackmount tabs for cabinet mounting

[Log in/Sign up to view price](#)

VSPOE-SWA16
(16 port, 2x SFP & RJ45 uplink)

VSPOE-SWA24
(24 port, 2x SFP & RJ45 uplink)



Rackmount Managed Gigabit Hi-PoE Switches

- Gigabit 1000Mbps PoE+ Base-T device ports
- 2 x SFP Base-X uplink ports for fibre backbone
- 2 x Base-T (RJ45) uplink ports (VSPOE-SWB16G3 only)
- L2 Managed switch for security & switch customisation
- 30W per port; 2 x 60W orange Hi-PoE ports; 240W total (360W -SWC24)
- Rackmount tabs for cabinet mounting

VSPOE-SWB16G2
(16 port, 2x SFP uplink)

VSPOE-SWB16G3
(16 port, 2x SFP & RJ45 uplink)

VSPOE-SWC24
(24 port, 2x SFP uplink)

PoE switches & accessories in 100M fast & 1000M gigabit



Fast Hi-PoE Switches

- 4 & 8 port fast switches 100M
- Supports DIN rail mounting
- 1000M RJ45 & SFP uplinks
- 30W load per port (60W HiPoE)
- Total 60W (-4H) / 96W (-8H)
- -30°~65°C operating temp.

VSPOE-SW4H VSPOE-SW8H
(4 Port) (8 Port)

[Log in to view price](#)



Fast Hi-PoE Desktop Switches

- 4 & 8 port fast desktop switches 100M,
- 2 x RJ45 uplinks: 10/100M (-4F), 10/100/1000M (-8G)
- 30W per port (60W HiPoE); total 60W (-4F) / 96W (-8G)

VSPOE-SWA4F VSPOE-SWA8G
(4 Port) (8 Port)

Extend up to 250m at 10Mbps



Gigabit Hi-PoE Switch

Desktop PoE switch, 1000M gigabit PoE ports, 30W per port & 1 x HiPoE port, 96W total

VSPOE-SWB8G
(8 Port, 96W)



Gigabit Fibre PoE Switch

4 x 1000M gigabit PoE ports, 4 x SFP fibre ports, 1000M uplink port, 30W per port & 1 x HiPoE port 90W

VSETH-SW9GF2
(9 Port, 120W, SFP)



Mini GBIC Fibre Adapters

LC connector single mode & multi-mode fibre adapters for use with switch SFP ports, supports OM1/2/3/4 (-MM1); SMF (-SM1)

SFPM1 (Multi-mode)
SFPM1 (Single-mode)



Extended PoE Switch

- Extends PoE up to 800m to supported ePoE cameras
- Extends to 300m@100Mbps and up to 800m at 10Mbps
- Total PoE load up to 120W
- 8 x 100M PoE device ports
- 30W/port, 2 x 60W HiPoE
- RJ45 & SFP 1000M uplinks
- DIN rail mountable
- -30°~65°C operating temp.

VSPOE-SW8E
(8 port, ePoE)

[Log in to view price](#)



PoE Midspan, Injector & Extender

PoE Midspan & Extender: 60W midspan, Delivers PoE to IP cameras up to 300m (<8W per cam) via 3 x PoE extenders

PoE Injector: 30W PoE+, 1000Mbps, 240VAC

VSPOE-IN30 VSPOE-MS VSPOE-EX
(Injector) (Midspan) (Extender)

[Log in/Sign up to view price](#)

Wireless links pre-configured to save you time

Bridge or Point to Multi-Point



Pre-Configured 5.8GHz Wireless AP Bridges

- Point-to-point & point-to-multipoint applications
- We program units for plug & play, saving you time
- 5.8GHz wireless access point, 900Mbps transfer speeds
- Up to 5km point-to-point range (LoS, H:60° / V:30°)
- PoE; pole & wall mount kits included; IP65 rated

LGAP300
(Single Unit)

Pre-configured links at no extra charge

LGAP300-PACKA
(2 x Wireless APs)

LGAP300-PACKB
(3 x Wireless APs)

[Log in to view price](#)

Incl. Stainless Pole Mount Ties



2.4/5GHz Wireless AP

- Build & extend WiFi access
- 2.4/5GHz antennas (1300Mbps)
- PoE; IP65 for outdoor use

LGAP200
(1300Mbps)



4G Wireless Access Point

- 4G LTE connection to wired & WiFi network
- 2 x 2.4GHz & 1 x 4GHz antennas
- 5VDC or PoE; SIM card/plan sold separately



LGAP100-4G
(300Mbps, 4G)

WiFi & Ethernet accessories to integrate with surveillance



5 Port Gigabit Switch

- 1000M gigabit Ethernet switch
- Unmanged switch plug & play
- 5VDC, -10~50°C working temp.

VSETH-SW5G2
(5 port)



16 & 24 Port Gigabit Ethernet Switches

- 1000M gigabit Ethernet switches in professional full metal enclosure
- Unmanged switch, overvoltage protection up to 6kV
- 100~24VAC, includes rackmount tabs for cabinet mounting

VSETH-SW16G
(16 port)

VSETH-SW24G
(24 port)

[Log in to view price](#)



Connect to
NVR / DVRs
via WiFi



Dual Band USB WiFi Adapter

Connect your NVR to WiFi, 2.4GHz @ 400Mbps, 5GHz @ 867Mbps, 3.0 USB interface

WT-D1300
(Wifi Adapter)

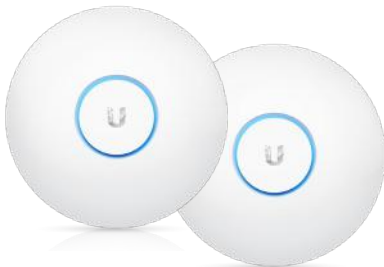


4G/WiFi Modem Router

- LTE CAT4 up to 150Mbps
- 4 x Gigabit (1000M) for LAN/WAN
- 250m WiFi coverage, 32 devices
- 1 x USB port; 1 x RJ11 for VoIP
- 4G: FDD 700/900/1800/2100/2600
- 3G UMTS B1/B8 1900/2100Mhz

VSWAN4GHWI
(4G SIM not incl.)

ANTENNA3M(4G, SMA, 3m)



UniFi Access Points

- Dual-band, powered by PoE
- 5 GHz band, 2.4 GHz band
- **U6LR**: 3Gbps, long range
- **NANOHD**: 2Gbps, value model

WT5-U6LR (WiFi 6)
WT5-UAPNANOHD



Bridge Access Points

- 5GHz point to point solutions
- 2x2 MIMO technology
- **ULB**: 120°, 25dBm, 1000M
- **UNS**: 43°, 27dBm, 100M

WT5-ULB (Litebeam)
WT5-UNS (Nanostation)



PowerBeam AC Antenna

- Mechanical $\pm 20^\circ$ up/down tilt
- 5GHz, 25dBi gain, up to 450Mbps
- Range >25km in ideal conditions
- Includes radome shield

WT5-UPBAC52
(5.8GHz, 25dBi)



AVOL

Professional Electrical Supplies

Scalable energy storage with AVOL Genius systems

Hybrid inverter integrates with existing solar systems

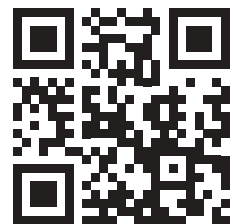


Genius Complete On/Off-grid Energy Storage System

- 5kW Hybrid Inverter with LFP Battery
- Expand up to 20kWh battery storage
- Retrofit to existing solar power system*
- Connect up to 4 battery modules
- Mobile app - access anytime, anywhere
- Peak load shifting
- Battery priority
- Easy set-up and install
- AC/DC surge protection
- IP65 weather rated

*Check with your sales representative for supported systems

Find out more about AVOL Genius:



Deliver battery storage to thousands of solar installs



Up to 20kWh battery storage



Premium CATL battery cells



Flexible & robust solar panels



Easy monitoring with phone app



Streamline modular design



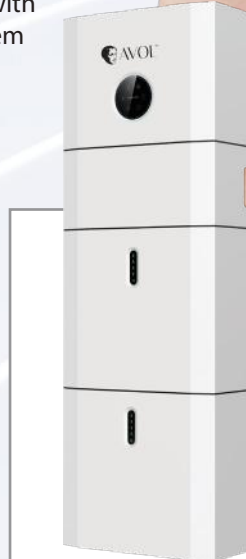
New or retrofit with existing PV system



Genius 5 System

- 1 x 5Wh LiFePO4 Battery
- 1 x 5kW Hybrid Inverter
- 5000W Output Power

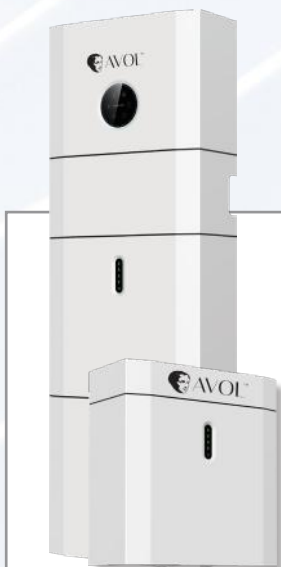
[Log in to view price](#)



Genius 10 System

- 2 x 5Wh LiFePO4 Battery
- 1 x 5kW Hybrid Inverter
- 1 x 10kW expander set
- 5000W Output Power

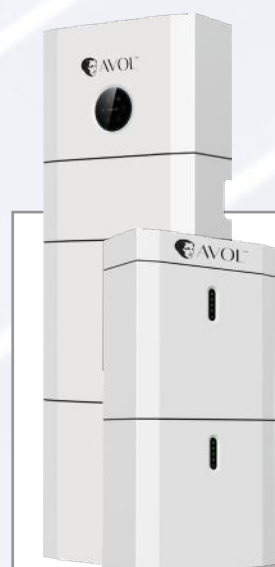
[Log in to view price](#)



Genius 15 System

- 3 x 5Wh LiFePO4 Battery
- 1 x 5kW Hybrid Inverter
- 1 x 15kW expander set
- 5000W Output Power

[Log in to view price](#)



Genius 20 System

- 4 x 5Wh LiFePO4 Battery
- 1 x 5kW Hybrid Inverter
- 1 x 20kW expander set
- 5000W Output Power

[Log in to view price](#)



AVOL

Professional Electrical Supplies

Add back-up power and deliver more installation value



Offer battery backup with every CCTV system sold



UPS-C Series Line Interactive UPS

- Power backup & protection for up to 4 AUS 3-Pin devices
- Alarm alerts for battery mode, faults and low power
- Line interactive UPS with simulated sinewave output
- Boost and buck AVR for voltage stabilisation
- Auto-voltage regulation, RJ45 passthrough protection

UPS-C1000-L
(600W, 3 inputs)

UPS-C1500-L
(900W, 4 inputs)

[Log in to view price](#)

Prevent footage loss and protect equipment



PE Series Tower UPS - Step Wave

- Line interactive uninterruptible power supply
- Step wave, standard AU sockets, LED or LCD display
- Auto-voltage regulation, RJ45 over-voltage protection

UPS650VA (360W, 2 inputs, 28min@72W)

UPS850VA (480W, 2 inputs, 26min@95W)

UPS1000VA (600W, 4 inputs, LCD, 44min@120W)

UPS1500VA (900W, 4 inputs, LCD, 32min@180W)

UPS2000VA (1200W, 4 inputs, LCD, 24min@240W)



PR Series Tower UPS - Sine Wave

- Pure sine waveform for greater stability and compatibility
- Connect devices easily via IEC320 sockets
- AVR stabilises output voltage
- RJ45 protection against line overvoltage for LAN/ADSL

UPS1000VA-S (1000W, 4 inputs, LCD, 44min@120W)

UPS1500VA-S (1500W, 4 inputs, LCD, 32min@180W)

UPS2000VA-S (2000W, 4 inputs, LCD, 24min@240W)

[Log in to view price](#)



Add Battery Pack to Extend Uptime



PR Series Rackmount UPS - Sine Wave

- Line interactive uninterruptible power supply (2U size)
- Pure sinewave for greater stability & device compatibility
- IEC sockets (up to 8 x 10A, 1 x 16A), LCD info display
- Auto-voltage regulation, RJ45 over-voltage protection

UPS1700VAXCRM (1350W, 8 input, 30min@270W)

UPS2200VAXCRM (1800W, 8 input, 47min@360W)

UPS3300VAXCRM (2700W, 9 input, 31min@540W)

Only 330mm Depth - Fits in 450mm Deep 19" Racks



Compact Rackmount UPS - Sine Wave

- Online UPS for zero-delay power supply switching (2U)
- Pure sinewave for greater stability & device compatibility
- IEC sockets (up to 6 x 10A, LCD info display)
- Auto-voltage regulation, RJ45 over-voltage protection
- USB port & HID protocol interfacing with Windows PCs
- RS232 for PSU management & local/remote shutdown

UPS1100VA-ORM (900W, 6 input, 32min@180W)

Hardwired business security systems up to 64 Zones



Complete Hardwired WGAP864 Alarm System

- 8 zone expandable up to 64 zones
- 8 partitions, up to 5 programmable outputs (expandable up to 25)
- Dedicated panic zone
- Monitored siren output
- Kit includes 864 panel, choice of white/black keypad, 12V7A backup battery, 3 x dual-tech PIRs, 2 x reed switches, outdoor siren/strobe, indoor piezo siren, 24VDC PSU
- Expand for more zones, app control, wireless TX/RX & more



WGAP864PACK
(8 Zone Alarm Kit)

WGAP864PW2
(Panel + White Keypad):
WGAP864KPW/B
(White or Black Keypad):

WGAP864EXP816 (8 zone expander, 8-16)
WGAP864EXP1664 (8 zone expander, 16+)
WGAP864WRX2 (2CH wireless RX & keyfobs)
WGAP864WRX16V2 (16CH wireless RX)



WiFi / IP Module for 864

- 864 alarm control via HYYP app
- Support RJ45 or WiFi connection
- Arm, disarm, trigger outputs & more

WGAP864IPMW
(Phone not incl.)



Watchguard Hardwired Siren and Strobes

- **W24SIREN**: Euro-style siren, 115dB piezo siren, blue strobe, tamper
- **COS**: Complete outdoor siren, AC/DC 115dB siren, tamper, strobe
- **WGSIR-500**: Polycarbonate, battery backup, 120dB, tamper, strobe, IP55 rated
- **WGSIR-900**: Polycarbonate, battery backup, 120dB, tamper, strobe, IP54 rated

W24SIREN **COS** **WGSIR-500** **WGSIR-900**

[Log in to view price](#)

*Internal sirens also available (flush & surface)

Wide range of hardwired sensors to support your install



TAKEX Wide Angle & Curtain PIRs

- PIR detectors, 11m range, 84° beam
 - Pet immune: Immune up to 20kg
 - Curtain: Vertical beam up to 16.5m
- PIR-T45WP (Pet Immune)
PIR-T46C (Curtain PIR)
PIR-T4BKT (Bracket)



Honeywell PSA Smoke Detectors

- Photoelectric, 9V backup, NO/NC
 - Interconnects up to 24 smoke alarms
 - Certified to AS3786:2014 standard
- SMODET4-N (4-Wire)
- Standalone Models
SMODET240V (Mains Power)
SMODET9V1 (Wireless)



Watchguard™ Heavy Duty Reed Switches

- Heavy duty, install with up to 50mm gap, NC reed switch output, 10W rated, 250mm leads, zinc alloy
 - 106 x 16 x 16mm dimensions
- RSW-M1 (Grey)
RSW-M1W (White)
RSW-M1B (Brown)



Watchguard™ Hardwired PIR Detectors

- PIRHDWT2: 15m PIR sensor, dual pyro, tamper, N.C, incl. brackets
- ALH-PIRMW: 15m PIR/microwave sensor, N.C, tamper, wall mount
- ALH-PIRGS: 15m PIR+glass/shock sensor, N.C, 10m glass break dist.
- ALH-PIR360: 360° N.C/N.O PIR sensor, Ø8m range (at 4.5m height)

PIRHDWT2 ALH-PIRMW ALH-PIRGS ALH-PIR360

[Log in to view price](#)

Watchguard™ Hardwired Reed Switches and Accessories



N.C reed switch, 19mm gap, also in grey or brown

RSW-P1 (White)

Compact white N.C wired reed switch

DSRLW

Large ROLA style N.C wired reed switch

DSRHDW2

Concealed N.C/ N.O wired reed switch (white)

DCRW

Heavy duty roller shutter door N.C wired reed switch

DRSR

Supervised wireless reed switch for 864 panel, 100m LoS

WGAP864WDCV2

Door loops, stainless steel tube, metal box or plastic clip

DLW (plastic)
DLB (metal)

[Log in to view price](#)



Alarms & Surveillance

Wireless alarms that interface with your CCTV installation



Watchguard D1 Series 4G / WiFi Alarm System

- Supports up to 150 wireless peripherals (6 sirens, 64 keyfobs)
 - WiFi (2.4GHz) and 4G connectivity for app control & alerts
 - 433MHz, code hopping, AES128 encrypted wireless tx
 - Utilise app to arm/disarm, monitor & check battery status
 - Calls and/or SMS up to 5 phone numbers on alarms
 - Built-in lithium battery up to 12hrs standby uptime
 - Wide range of additional accessories sold separately
- *SIM card sold separately

Integrate alarm system with CCTV video link



Kit includes:
 Alarm hub, PIR, reed switch & keyfob
 ALMKIT-D1 (Alarm kit)

[Log in to view price](#)



Watchguard Force wireless security for ease of operation



JUST ASK
amazon alexa

works with the
Google Assistant



* 4G SIM for, SMS & B2B monitoring sold separately

Watchguard Force Wireless WiFi / 4G Alarm Pack

The perfect alarm solution for homes & small businesses. Receive real-time notifications, control and monitor the alarm system via the smartphone app when connected to WiFi

- 4G & Contact ID for back to base monitoring*
- WiFi self monitoring via Smart Home app
- Quick config of wide range of alarm sensors
- Reliable backup with 6 hours battery uptime
- Add up to 50 sensors, 10 remotes & 50 tags
- SMS power loss notifications*
- Kit includes alarm hub, indoor PIR & bracket, reed switch, 2 x keyfob & 2 x RFID tags

ALL-PACK1
(WG Force Kit)

[Log in to view price](#)



Sensors & Accessories for Watchguard Force Alarms

- Indoor PIR & Reed (-PIR1), Indoor PIR (-PIR2), Outdoor PIR (-PIR3), Vibration & Reed (RSW1), Reed (RSW2)
- Wireless smoke detector (-SMD1), Outdoor Siren & Strobe (-SIR1), Indoor AC Siren (-SIR2)
- Panic Button (-PNB1), PTZ Camera (-PTZC)

ALL-PIR1 ALL-PIR2 ALL-PIR3 ALL-RSW1 ALL-RSW2 ALL-SMD1 ALL-SIR1 ALL-SIR2 ALC-PNB1 WGF-PTZC

[Log in/Sign up to view price](#)

Stylish LED Light Fixtures Designed and Made in Italy



Switch
Colour
Temp.



Round & Square LED Bollard Lights

- In grey/black models in different styles; 2700K/4000K/6500K switchable

Carlo (6W)
FU-CAR-6G
FU-CAR-6B

Ester (10W)
FU-EST-10G
FU-EST-10B

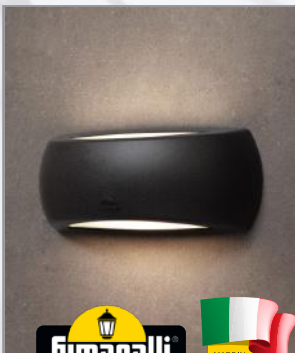
Pina (18W)
(Black Only)
FU-PIN-18B

In-ground LED Lights

- IP67, shock resistant, black/grey

Ceci (6W)
FU-CEC-6G
FU-CEC-6B

Log in to view price



Switch
Colour
Temp.



Wallwashing LED Bulkhead Lights

- In grey/black models in different styles; 2700K/4000K/6500K switchable

Francy (6W)
FU-FRA-6G
FU-FRA-6B

Lorenza (3W)
FU-LOR-3G
FU-LOR-3B

Abram (3W)
FU-ABR-3G
FU-ABR-3B

Wall Recessed LED Lights

- IP55, shock resistant, black/grey

Nina (6W)
FU-NIN-7G
FU-NIN-7B

Log in to view price

Elegant Fixtures with Matching Poles & Mounts



40W Giorgio LED Area Lights

- 4800lm (120lm/W), 2700K/4000K/6500K
- Ø60mm mount, IP66, shock resistant
- 4 x GX53 LED bulbs
- Available in black or grey

Giorgio (40W)

FU-GIO-40G
FU-GIO-40B

[Log in to view price](#)



Gino LED Area Lights

- Available in 50W & 60W, 4000K
- Ø60mm, IP65, shock resistant
- 1 x E27 LED bulb
- Available in black or grey

Gino (50W)

FU-GIN-50G
FU-GIN-50B

Gino (60W)

FU-GIN-60G
FU-GIN-60B



50W Vivi LED Hanging Light

- 5300lm (120lm/W), 4000K warm white
- Ø60mm mount, IP65, shock resistant
- E27 LED bulb
- Available in black or grey

Vivi (50W)

FU-VIV-50G
FU-VIV-50B



50W Beppe LED Hanging Light

- 5300lm (120lm/W), 4000K warm white
- Ø60mm mount, IP65, shock resistant
- E27 LED bulb
- Available in black or grey

Beppe (50W)

FU-BEP-50G
FU-BEP-50B

[Log in to view price](#)

Stylish, light metal poles & brackets for LED & CCTV



**OVER
20%
OFF**



Febo & Ektor Light Poles

- Italian modern design light poles
- Ø60mm mount for lights & brackets
- Uses FumaTech® pole technology
- Poles incl. J-bolts & bolt template
- Available in black or grey colour
- Supports pilar & midipilar (right)



- Hot dip galvanised structural inner pole
- High density, rigid & durable PU expance
- Rust-free, shock resistant, UV stabilised, self extinguishing resin outer pole



**Febo (1m,
Black Only)**
FU-FEB-1B

Ektor (2.5m)
FU-EKT-25G
FU-EKT-25B

Ektor (4m)
FU-EKT-4G
FU-EKT-4B

Ektor (6m)
FU-EKT-6G
FU-EKT-6B

[Log in to view price](#)

Midipilar Pole Brackets

- 470mm from pole, grey/black
- FU-MID-P1G / B (Single)
- FU-MID-P2G / B (Double)
- FU-MID-P3G / B (Triple)



Pilar Pole Brackets

- 610mm from pole, grey/black
- FU-PIL-P1G / B (Single)
- FU-PIL-P2G / B (Double)



Midipilar Wall Brackets

- 420mm from wall, grey/black
- FU-MID-WG / B



Pilar Wall Brackets

- 650mm from wall, grey/black
- FU-PIL-WG / B



New Lot Light Base

- Pedestal for surface or ceiling mount
- Ø60mm mount; grey/black colours

FU-NEW-G
FU-NEW-B



We can specify poles for your installation

Ask us about integrating CCTV or lighting to your Fumagalli poles or bases

ENSA™

LED Lighting & Energy Saving

Deliver efficiency and security with ENSA Lighting



ENSA™

LFL-B2 Series Pro LED Flood Lights

- Superb 150lm/W luminous efficacy, >70 CRI
- Built with high performance Lumiled LEDs
- Wide 120° beam angle, circular light distribution
- 3000K/5000K warm/cool white colour temp.
- Outstanding 50,000hrs rated LED lifespan
- Aluminium & toughened glass construction
- IP65 weather rated, 5 year warranty

[Log in to view price](#)

LFL-B20-W2 (20W, 3000K)
LFL-B20-C2 (20W, 5000K)

LFL-B30-W2 (30W, 3000K)
LFL-B30-C2 (30W, 5000K)

LFL-B50-W2 (50W, 3000K)
LFL-B50-C2 (50W, 5000K)

LFL-B80-C2
(80W, 5000K)

LFL-B100-C2
(100W, 5000K)

LFL-B150-C2
(150W, 5000K)

LFL-B200-C2
(200W, 5000K)

ENSA™

LFL-C2 Series Sensor Flood Lights

- 120lm/W luminous efficacy, >80 CRI
- Effective light distribution with 120° beam angle
- Adjustable PIR detection up to 12m with a 140° arc
- Adjustable on-time delay (5s ~ 5min)
- 5000K cool white, 35,000hrs rated LED lifespan
- 180° adjustable U-bracket & PIR bracket for flexibility
- IP65 weather rated, 3 year warranty



LFL-C20-CS2-5
(20W, 2400lm)

LFL-C30-CS2-5
(30W, 3600lm)

LFL-C50-CS2-5
(50W, 6000lm)

[Log in to view price](#)

ENSA™

LED Lighting & Energy Saving

High power LED flood lighting for large projects



Ask how we can assist you with your next project

Advice, resources and lighting simulations for your LED project submission

ENSA™

LFL-F Series High Power LED Floods

- Available in 480W, 720W and 960W models
- Lumileds LEDs exceptional light output (+165lm/W)
- 60° beam angle, >80 CRI, 6500K cool white, IP66
- Customise lighting for large areas perfectly with 360° rotate & 140° tilt individually adjustable LED modules
- Ask us about lighting simulation & project assistance

LFL-F480-C (480W, 79,200lm) LFL-F720-C (720W, 118,800lm) LFL-F960-C (960W, 158,400lm)

[Log in to view price](#)



*360° Rotate
& 140° Tilt
Modules*



ENSA™

LED Lighting & Energy Saving

Performance LED lighting for your next project



ENSA™

LSL-B Series: LED Area/Street Lights

- Built in photocell models for dusk/dawn switching
- Available in 150W and 200W models
- Versatile mounting with 5 adjustable light brackets
- Slip fit, fixed/adjust pole, trunnion & yoke wall mounts
- 135lm/W, 5000K cool white, >70 CRI, 50,000hrs lifespan
- 155 x 85° beam angle, 1~10V / PWM dimmable
- IP66/IK08 weather/vandal rated, 20KV surge protection



LSL-B150-CP
(150W, 20,250lm)

LSL-B200-CP
(200W, 27,000lm)

[Log in to view price](#)



LSL-BKTS
(Slip Fitter)



LSL-BKTT
(Trunnion)



LSL-BKTY100 (150W)
LSL-BKTY200 (200W)
(U-Wall Mount)



LSL-BKTP
(Fixed Pole)



LSL-BKTA
(Adjust. Pole)

ENSA™

LFL-G2 Series: High Power LED Floods

- Superb 160lm/W luminous efficacy, >80 CRI
- Available in 240W, 360W, 480W, 720W & 960W
- 180° adjustable U-bracket to direct luminaires
- Incredible 100,000hrs rated LED lifespan
- 5000K cool white colour temperature
- Wide 60°x100° beam angle models (30° optional)
- IP67 weather rated; ideal for sporting grounds



LFL-G240-C2
(240W, 38,400lm)

LFL-G360-C2
(360W, 57,600lm)

LFL-G480-C2
(480W, 81,600lm)

LFL-G720-C2
(720W, 115,200lm)

LFL-G960-C2
(960W, 153,600lm)

[Log in/Sign up to view price](#)

ENSA™

LED Lighting & Energy Saving

Commercial high bays with superior energy efficiency

IP69K rated for food prep facilities



ENSA™

LHB-D Series UFO High Bays

- Light-weight high bays in 100W, 150W & 200W
- 130lm/W, >80 CRI, 50,000hrs rated LED lifespan
- Compact IP66 weather rated body; metal eyelet
- 5700K cool white, 90° beam angle as standard
- Optional: 60° / 120° lenses; 180° U-bracket

LHB-D100-C
(100W)

LHB-D150-C
(150W)

LHB-D200-C
(200W)

[Log in/Sign up to view price](#)



ENSA™

LHB-F Series: Food Grade High Bays

- Available in 100W, 150W or 200W models
- 135lm/W, >80 CRI, 50,000hrs rated LED lifespan
- IP69K rated for pressure cleaning in food prep facilities
- In 4000K & 5700K natural or cool white, 120° beam angle
- NSF, ETL, DLC, SAA, IPART, VEET certifications

LHB-F100-C/N
(100W)

LHB-F150-C/N
(150W)

LHB-F200-C/N
(200W)

[Log in/Sign up to view price](#)

ENSA™

LED Lighting & Energy Saving

Efficient lighting upgrades done in a flash



ENSA™

E27 and E40 Retrofit LED Lights

- E27 and E40 screw-fit LED bulbs, up to 130lm/W
- >80 CRI, >15,000hrs lifespan, 4000K natural white
- Ø138 x 231mm (Round style, 45W, E27 base only)
- Ø110 x 275mm (Tulip style, 40W, E27 or E40 base)

Round:

LBL-D45-E27N
(E27 only)

Tulip:

LBL-D40-E27N
LBL-D40-E40N

E27 Lamp Holders 1.5m

LHC-E27-15 (bare wire)
LHC-E27-15P (inc. plug)



ENSA™

E40 Retrofit LED High Bay Lights

- Quick upgrade to LED high bays, in 100W & 160W, E40 base
- 125lm/W, >80 CRI, 25,000hrs rated LED lifespan
- 4000K natural or 6500K cool white colour temp.
- Superb lighting performance, frosted for minimal glare

100W:

LBL-D100-E40C/N
(cool/natural)

160W:

LBL-D160-E40C/N
(cool/natural)

LED Base Converters

E27P-E40L (E27 power to E40 light)
E40P-E27L (E40 power to E27 light)



ENSA™

2CH Mains Voltage 433.92MHz Receiver

- Remote control any 240VAC load up to 1000W
- 2 relay outputs (latched/timed), 100m RF range LoS
- Trigger via wireless alarm sensors, eg: PIR/reed switch*
- Add up to 128 remotes (2 remotes included)
- IP55 weather/dust rated, sheltered mounting

ENSA-RS1

[Log in to view price](#)



Remote control any 240VAC load

ENSA™

LED Lighting & Energy Saving

Intelligent lighting to improve security & energy savings



ENSA™

IP65 LED Sensor Batten Lights

- 2ft/4ft models, microwave sensor, set on-time duration
- **S2/SE Series:** Adjustable 2 stage dim (100% -> Dim -> Off), +80lm/W, 120° beam angle, 35,000hrs LED lifespan, IP65
- **SE Series:** 2hrs up-time backup battery, AS2293.3
- **S Series:** On/off mode only (100% -> Off), +75lm/W, 140° beam angle, 50,000 LED lifespan, IP65 rated

S2 - Sensor, SE - Sensor/Battery

LEDBT18WS2 (2ft, 18W)

LEDBT36WS2 (4ft, 36W)

LEDBT18WSE (2ft, 18W)

LEDBT36WSE (4ft, 36W)

S - Sensor Batten

LEDBT18WS (2ft, 18W)

LEDBT36WS (4ft, 36W)

[Log in to view price](#)



ENSA™

16W LED Oyster Light Series

- In standard, sensor & sensor+battery backup
- 1200lm, 120° beam angle, 30,000hrs lifespan
- 3000K warm (-W) or 5000K cool (-C) colour temp.
- Frosted diffuser, IP66 & IK10 weather/vandal rated
- **Sensor:** Adjustable on-time delay / standby modes
- **Battery:** 3.7V 1500mAh NiMH >5hr uptime at 1.2W

LOL-A16-W/C
(Standard)

LOL-A16-WS2/CS2
(Sensor Light)

LOL-A16-WSE/CSE
(Sensor & Battery)

[Log in to view price](#)

Commercial LED lighting for new fitouts or LED upgrades






ENSA™

LPL-C Series LED Panel Lights

- 40W, 4800lm (120lm/W), 110° beam angle
- 5000K cool white colour temperature
- Frosted diffuser, 3 different mounting options
- UGR <22, 300 x 1200mm hole cut size

LPL-C40-C (40W, 4800lm)

Mounting Kits
 LPL-C-S (Surface)
 LPL-C-R (Recessed)
 LPL-C-H (Hanging)


ENSA™ Intelligent Motion Sensor & Dusk/Dawn Switches





<ul style="list-style-type: none"> • 12m 180° • Wall mount • PIR detection • IP65 rated <p>ENSA-PS1</p>	<ul style="list-style-type: none"> • 4m x 20m • Corridors • PIR detection • IP20 rated <p>ENSA-PS2</p>	<ul style="list-style-type: none"> • Ø6m 360° • Recessed • PIR detection • IP20 rated <p>ENSA-PS3</p>	<ul style="list-style-type: none"> • Ø20m 360° • Ceiling mount • PIR detection • IP65 rated <p>ENSA-PS4</p>	<ul style="list-style-type: none"> • Ø8m 360° • Concealed • Microwave • Indoor only <p>ENSA-MS1</p>	<ul style="list-style-type: none"> • Ø16m 360° • Ceiling mount • Microwave • IP20 rated <p>ENSA-MS2</p>	<ul style="list-style-type: none"> • 2 ~ 100 Lux • DIN rail/probe • Dusk/dawn • IP65 rated <p>ENSA-LC3</p>	<ul style="list-style-type: none"> • 5 ~ 50 Lux • Wall clip • Dusk/dawn • IP65 rated <p>ENSA-LC1W</p>
--	---	--	--	--	--	---	--

[Log in to view price](#)



ENSA™

18W PIR Sensor Tube Lights

- 4ft / 1200mm, T8 standard size
- 18W, 80lm/W, 120° beam angle
- 8m PIR motion detection
- 60s on-time, dims to 30% on standby
- Includes LED starter for upgrades

LTU-C18-CS (1800lm)





ENSA™

13.5W LED Linkable Cabinet Light

- 1050lm output, 3000K warm white
- Connect up to 3 LED lights together
- 10 year rated lifespan (30,000hrs)
- Incl. end-to-end connectors, surface and right angle mounting clips

LEDDBR13W3K (13.5W, 3000K)



AVOL

Professional Electrical Supplies

Excellent value for performance with AVOL lighting



LHB-E Series LED High Bays

- High 100lm/W light output in 100W, 150W & 200W
- 90° beam angle, >80 colour rendering index
- 35,000hrs LED lifespan, 6000K cool white colour temp.
- IP65 rated, neat integrated driver design
- Pre-terminated 3-pin AC plug, mounting eyelet

LHB-E100-C
(100W)

LHB-E150-C
(150W)

LHB-E200-C
(200W)

[Log in to view price](#)



LSL-C Series LED Street Lights

- 110lm/W light output in 50W, 100W, 150W & 200W
- 90° x 130° beam angle, >80 colour rendering index
- 35,000hrs LED lifespan, 6000K cool white colour temp.
- IP65 rated, neat integrated driver design
- Underterminated power; Ø62mm pole installation

LSL-C50-C
(50W)

LSL-C100-C
(100W)

LSL-C150-C
(150W)

LSL-C200-C
(200W)

[Log in to view price](#)



AVOL

Professional Electrical Supplies

Ultimate value LED flood lighting with AVOL H-Series



H Series LED Flood Lighting

- Available in 50W, 100W, 150W and 200W models
- 80lm/W, 6000K, 120° beam, IP66 rated, preterminated AC plug
- **Sensor Flood (-CS):** 12m arc PIR motion sensor, in 50W, IP65

LFL-H50-C
(50W, 4000lm)

LFL-H100-C
(100W, 8000lm)

LFL-H150-C
(150W, 12000lm)

LFL-H200-C
(200W, 16000lm)

LFL-H50-CS
(50W, Sensor)



[Log in/Sign up to view price](#)



TPS-15TE100
(100m Drum)

1.5mm² Twin & Earth Flat TPS Cable



TPS-15TA100
(100m Drum)

1.5mm² Twin Active Flat TPS Cable



TPS-15SD100
(Red, 100m Drum)

1.5mm² SDI Cable



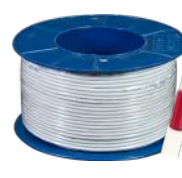
TPS-25TE100
(100m Drum)

2.5mm² Twin & Earth Flat TPS Cable



TPS-25TA100
(100m Drum)

2.5mm² Twin Active Flat TPS Cable



TPS-25SD100
(Red, 100m Drum)

2.5mm² SDI Cable

New electrical range by AVOL



Three Phase Round Pin Plugs (250V, 500V)

- 3, 4 & 5 Round Pin
- Available from 10A - 50A
- IP66 weather rated



Angled Electrical Pin Plugs (250V, 500V)

- 3, 4 & 5 Round Pin
- Available from 10A - 50A
- IP66 weather rated



Extension Sockets (250V, 500V)

- 3, 4 & 5 Round Pin Sockets
- Available from 10A - 50A
- IP66 weather rated



Industrial Sockets

- 3, 4 & 5 Round Pin, 3 Flat Pin Sockets
- Available from 10A- 50A, IP66 rated



Industrial Switch & Socket

- Surface mounted sockets with hinged lids and rotary switch
- 3, 4 & 5 Round Pin, 3 Flat Pin Sockets
- Available from 10A - 50A, IP66 rated

[Log in to view price](#)



3 Flat Pin Plug & Extension Socket (250V)

- Available in 10A & 15A
- IP66 weather rated



Weather Resistant Power Point (250V)

- Available in single, double, and with extra switch
- IP53 rated



3 Pin Flat Appliance Inlet (250V)

- Available in 10A and 15A
- IP66 weather rated



Round Pin Appliance Inlets (250V, 500V)

- Available in 3, 4 & 5 Round Pin
- Available from 10A - 50A, IP66 rated

AVOL complete electrical & comms conduit (AS/NZ2053)



Medium Duty Rigid Conduit (4m)

- Telecom/Electrical, PVC-U material
- Complies to AS/NZS 2053 standard
- In white or grey; 5 year warranty

- CON100 (Ø20mm Grey)
- CON101 (Ø25mm Grey)
- CON102 (Ø32mm Grey)
- CON103 (Ø40mm Grey)
- CON104 (Ø50mm Grey)
- CON105 (Ø63mm Grey)

- CON120 (Ø20mm White)
- CON121 (Ø25mm White)
- CON122 (Ø32mm White)

- Heavy Duty for Solar Cabling**
CON161 (Ø25mm, Grey HD)



Orange Heavy Duty Rigid Conduit (4m)

- PVC-U, AS/NZ2053, 5 year warranty

- CON140 (Ø20mm)
- CON141 (Ø25mm)
- CON142 (Ø32mm)
- CON143 (Ø40mm)
- CON144 (Ø50mm)
- CON145 (Ø63mm)



90° Sweep Bends, Solid Elbows, Inspection Elbows & Tees

- 90° Sweep Bends
- Inspection Elbows



HD & MD Corrugated Conduit Bundle Lengths Ø20mm - Ø50mm

- White MD (50m)
- Orange HD (25m)
- Grey HD Solar (Ø25mm, 25m)



1/2/3/4-way Junction Boxes & Deep Junction Boxes

- Junction boxes
- Deep Junction boxes



Galvanised & Stainless Half Saddles, Plastic Saddles, Saddle Spacers

- Galvanised Steel Half Saddles
- Plastic Saddles
- Saddle Spacers

[Log in to view price](#)



Couplings, Reducers, Locating Flanges, Nylon & Extension Rings

- Conduit Couplings
- Plain Conduit Reducers
- Locating Flanges



Quick Fit & Surface Plug Bases, Double Power Points

- Quick Fit Plugs
- Surface Plug Bases
- Double Power Points



Electrical Grid Plates (Blank, 1-6 Gang), 1-Gang Light Switch

- Electrical Grid Plates
- 1-Gang Light Switches



Junction Boxes, Terminal Boxes, C-clips & Terminal Blocks

- Junction Boxes
- Fixed Terminal Boxes
- Single Terminal Block (50pcs)



SECURVIEW

Professional CCTV Accessories

Best value deals on essential CAT5 & CAT6 data cable



SECURVIEW

CAT5E/CAT6 305m Pullboxes

- 305m unterminated network cable
- Supports Power over Ethernet
- ACMA approved
- **CAT5e:** Blue, yellow & white, Ø0.47mm
- **CAT6:** Available in blue, red and grey

CAT5EBLU-47MM
(CAT5e Blue)
CAT5EYL-47MM
(CAT5e Yellow)
CAT5EWH
(CAT5e White)

CAT6BLU-50MM
(CAT6 Blue)
CAT6RED-50MM
(CAT6 Red)
CAT6GRA-50MM
(CAT6 Grey)



Modular RJ45 Plugs
RJ45PLUG-C5 (CAT5)
RJ45PLUG-C6 (CAT6)

[Log in to view price](#)



CAT5E UTP Cable 305m Pullbox

- 305m UTP CAT5e cable
- Blue sheath, Ø0.45mm
- Copper conductor

CAT5PFM920-B
(CAT5, Blue)



CAT6 UTP Cable 305m Pullbox

- 305m UTP CAT6 cable
- Blue sheath, Ø0.53mm
- Copper conductor

CAT6-B531
(CAT6, Blue)

Cable rolls for alarm, CCTV and access control installs



100m 4-Core and 6-Core Alarm Cable

7 / 0.20mm

D4CC (4-Core)

D6CC (6-Core)

14 / 0.20mm

D4CC2 (4-Core)

D6CC2 (6-Core)



100m Figure 8 Cable Rolls

White, blue or red/black

DF8C (14/0.20, white)

DF8C2 (24/0.20, blue)

DF8C4RB (24/0.20, R/B)

DF8C4W (24/0.20, W)

DF8C3 (48/0.20, R/B)



100m Power/Coax Cable

- 100% copper conductor; 95% braiding; 75Ω RG59 coax cable
- 24/0.20mm figure 8 cable

DCOAXPWR24FCBP
(100m roll)



200m 6-Core Access Cable

- Shielded cable for access control
- 6-core 7/0.20mm, tinned copper
- Aluminium foil shielded, grey PVC

AC200G
(200m roll)



200m Combo Access Cable

- Figure 8/4/6/6-core combo cable
- 24/0.2 (fig.8), 7/0.2 shielded (6-core), 14/0.2 (4-core), 14/0.2 (6-core)

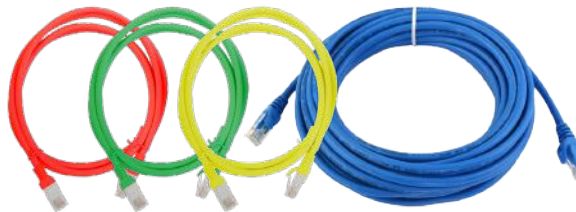
APAC200G
(200m roll)



Combined Power and 4K BNC Video Lead

- Preterminated; for HDCVI CCTV
- Combine 2pcs for 60m@4K

VIDPWR30RG59
(30m)



CAT5/6 Pre-terminated Leads

- CAT5E and CAT6 patch leads in variety of colours
- Ask us about custom colour patch leads in CAT5 or CAT6

CAT5E Leads (Blue)

NETCABLE20-Z (20m)

NETCABLE30-Z (30m)

CAT6 Patch Leads (Various Colours)

NETCABLE025X6 (0.25m)

NETCABLE050X6 (0.50m)

Available in
wide range of
colours

Log in to view price

We have the power supplies to suit your alarm or CCTV job



SECURVIEW

Heavy Duty CCTV PSUs

- 18 individually fused outputs; compact metal case
- Thermal cutoff, short circuit, high voltage & over current

PS12VDC10A18CHB (12VDC 10A output)

PS24VAC10A18CH (24VAC 10A output)



DIN Rail Adjustable Voltage PSUs

- 12VDC 7.5A and 24VDC 4A models; 88~264VAC input
- Current limiting on overload, auto-shutdown on over voltage/temperature; free air convection cooling

PSDR12V7A2 (12VDC 7.5A)

PSDR24V4A2 (24VDC 4.0A)

[Log in to view price](#)

Rhino

4 Port 12VDC PSU

- Isolated power outputs
- 4 x 12VDC at 0.7A outputs
- 100~240VAC input voltage
- 4 x DC plug terminated



PS12VDC700-4

SECURVIEW

4 Channel 12V PSU

- 4CH 12VDC 5A supply
- Adjustable output 12~13.8V
- 100~240VAC input voltage
- High voltage & overcurrent protection



PS12V5A4CH

Rhino

12VDC PSUs

- 2A and 5A models

PS2000SM (2A)

PS5000SM (5A)



Watchguard

12VDC Lead Acid Batteries

- Available in 7A and 1.2A
- Sealed lead acid batteries

D12V7A

D12V1.2A

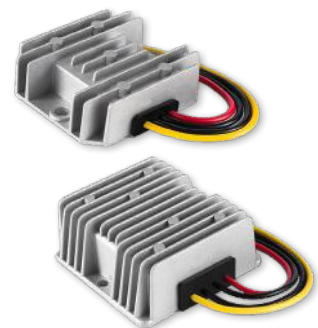
SECURVIEW

DC Power Converters

- Convert DC 12V~24V or 24V~12V
- Wide input and stable output voltage
- 18~35V to 12V; 11~16V to 24V
- Overcurrent & overvoltage protection
- IP68, anti-vibration, dustproof

VSPOWCONVERTER1 (12 to 24V)

VSPOWCONVERTER2 (24 to 12V)



SECURVIEW

Leads & Connectors

- BNC, Power and RJ45 plugs and cable connectors
- Contact us for our full range and bulk pricing



DC4CHLOOM (4-way DC splitter)

DC5CHLOOM (5-way DC splitter)

DC8CHLOOM (8-way DC splitter)

VSDCPFTB/MTB (DC to Term. block)

VSFBNCTWIST (BNC twist connect.)

VSFBNCS9 (RG59 BNC connector)



Superb WiFi air conditioning with 6 year warranty

World's largest residential AC manufacturer



Inverter WiFi Air Conditioner Systems

- Manufacturer 6-year parts and labour warranty
- Full inverter air con systems with indoor & outdoor unit
- Ideal for homes, offices and small businesses
- Up to 7.1kW cooling & heating; air flow up to 361L/sec
- Control via WiFi for iOS/Android (local IR remote incl.)

AC4200-(I/O) (2.5kW, 175L/s) AC4204-(I/O) (5.2kW, 236L/s) AC4206-(I/O) (7.1kW, 361L/s)



Pre-insulated Pair Coil

- Available in 3 gauges
- Pre-insulated pair coil
- 410A rated; 20m rolls



ACA-PC01 (¼~⅜", 6.35 ~ 9.53mm)
 ACA-PC02 (¼~½", 6.35 ~ 12.70mm)
 ACA-PC03 (¼~⅝", 6.35 ~ 15.88mm)



AC Unit Wall Mounts

- Bracket for outdoor units
- Adjustable feet and position
- **-WB01:** 450 x 350 x 700mm
- **-WB02:** 550 x 450 x 850mm



ACA-WB01 (120kg rated)
 ACA-WB02 (150kg rated)

[Log in to view price](#)



100mm Air Conditioning Ducting

- 100mm split ducting, 2m lengths (103x68mm)
- Flame retardant PVC, durable finish UV rated



DUCAC100DT
 (2m length duct)

- 100CC (Ceiling cap)
- 100CJ (Cover joint)
- 100FE (Flat elbow)
- 100FJ (Flex joint)
- 100TJ (Tee joint)
- 100VE (Vertical elbow)
- 100WC (Wall corner)

Connect with RhinoCo online for more

Gain access to tools and resources to help you win your next install job



Custom Marketing Material

Generate custom product brochures & business cards on our Portal, featuring your own business logo and details.



Quote with your Branding

Save your product selection as a quote for easy reordering & export equipment schedules using your branding.



Online Tools & Tech Support

Calculate CCTV system HDD storage with the Disk Calculator, and access our helpful online support database.



Exclusive Trade Deals

Gain access to trade customer pricing and exclusive special offers, with new products and offers added regularly.



For online sales & quick fulfilment, purchase online at www.rhino.au



Over 45 Years | Since 1978

M/L: 407530935

Get in touch with us or visit our Sydney branches:

(02) 9671 6711 | sales@rhino.au | www.rhino.au

McGraths Hill

Head Office & Distribution
9 Hannabus Place
McGraths Hill, NSW 2756

Haberfield

Showroom & Sales Office
223-225 Ramsay Street
Haberfield, NSW 2045

Guildford

Showroom & Sales Office
577 Woodville Road
Guildford, NSW 2161