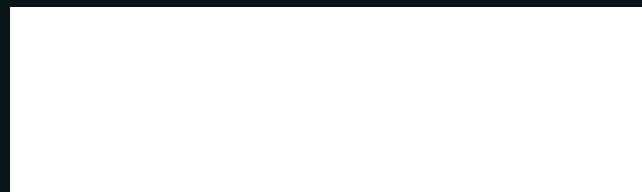


STICKERMANIA

Perfection is our goal excellence will be tolerated

BASIC / PREMIUM MATT / METAL / STONE & MARBLE / FABRIC & LEATHER / WOOD / VERSA-TILE

Description Guid



☉ Soft Matt ☉ **NEW** ☉ **SP-1014**

☉ Pattern name ☉ New pattern release ☉ Fire Retardant Material* ☉ Pattern unique code

CONTENTS

BASIC	4
PREMIUM MATT	8
METAL	20
STONE & MARBLE	24
FABRIC & LEATHER	28
WOOD	30
VERSA-TILE	36
ANTI-BACTERIA	38

BEAUTY IN AESTHETICS

Aesthetics, in short, is what makes you happy. Beauty in aesthetics can only be described as a feature of objects that are pleasurable to perceive, such as sunsets, landscapes, and pieces of art. All of these make aesthetics with beauty, art, taste, and now AG Stickermania Film.

Beauty is in the eye of the beholder, and AG Stickermania Film's architectural vinyl brings you the latest design palette from around the world, with hundreds of varieties in our premium metallics, woods, colors, textiles, fabrics, and new creative designs.

AG Stickermania Film's stunning finishes allow you to transform any area and substrate. Furniture, walls, washrooms, doors, and elevators are just a few areas you can quickly and effortlessly transform with little to no disruption. It is priceless to the environment by not using the materials it replicates and having to fill landfills without compromising luxury, quality, and beauty. You can instantly transform these areas with AG Film and match any building design theme with a vast array of finishes available to you.

Imagine being able to use stunning finishes of premium wood, marble, stone, fabric, leather, and more to walls and match the columns, ceilings, tables, and reception desk in the same exquisite material. The ability to transform old and new objects in situ into works of art. AG Film uses the latest in scientific technologies and can offer ranges in anti-fingerprint and anti-scratch. It is nonporous, so it is ideal for wet rooms and swimming pool areas. It is easy to clean, making it the perfect choice for high-risk medical facilities where hygiene is paramount.

BASIC / PREMIUM MATT / METAL / STONE & MARBLE / FABRIC & LEATHER / WOOD / VERSA-TILE

BASIC



SS-5012

AG Film's Solid Range offers a timeless selection of colors from around the world. Using a tetrachromatic approach to color selection, the Solid Range includes both classic and trendy colors that are sure to impress.

BASIC

BASIC / PREMIUM MATT / METAL / STONE & MARBLE / FABRIC & LEATHER / WOOD / VERSA-TILE

BASIC

SS-5033	SS-5010	SS-5021	SS-5009
SS-5028	SS-5025	SS-5016	SS-5005
SS-5030	SS-5023	SS-5037	SS-5013
SS-5020	SS-5034	SS-5012	SS-5007
SS-5011	SS-5018	SS-5004	SS-5006
NEW SS-5002	SS-5024	SS-5019	SS-5031
SS-5017	SS-5026	SS-5008	SS-5027



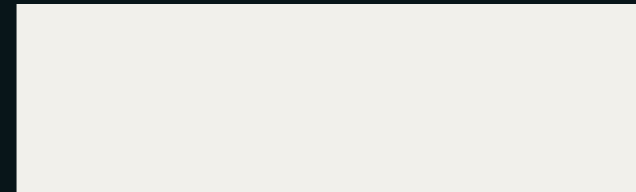
SOFT MATT



SP-1024

SOFT MATT

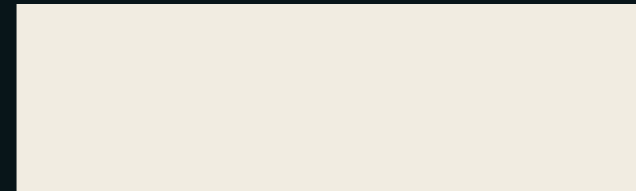
SOFT MATT



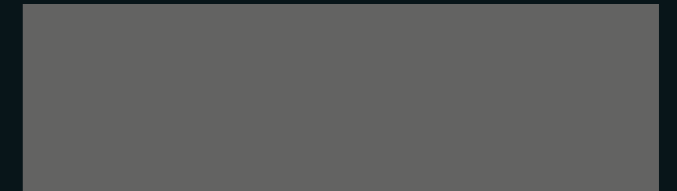
Soft Matt **NEW** SP-1014



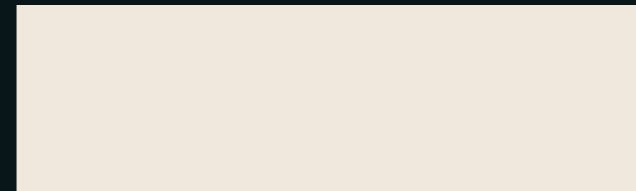
Soft Matt SP-1025



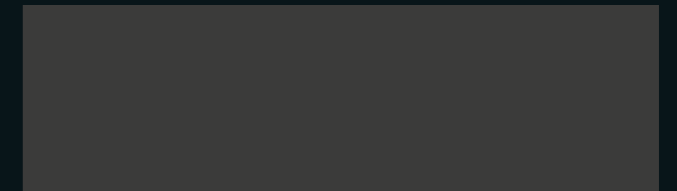
Soft Matt SP-1019



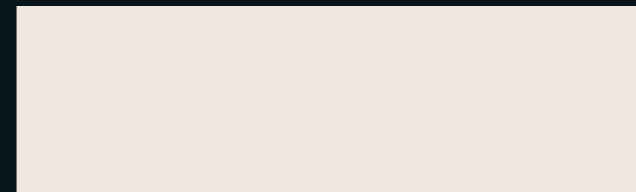
Soft Matt SP-1020



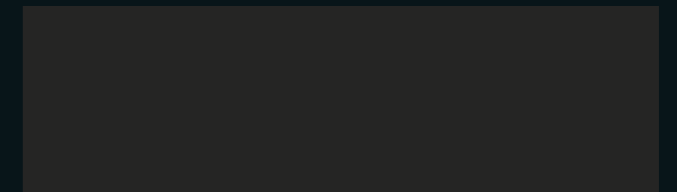
Soft Matt **NEW** SP-1015



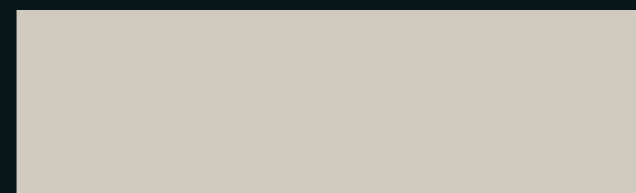
Soft Matt SP-1021



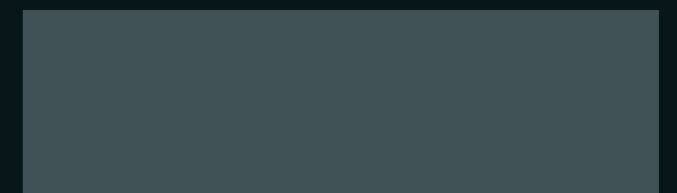
Soft Matt **NEW** SP-1017



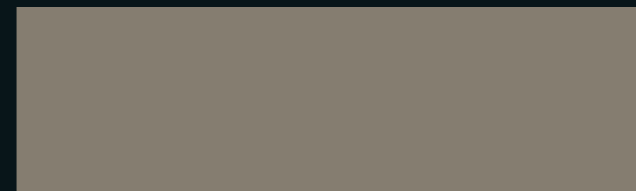
Soft Matt SP-1024



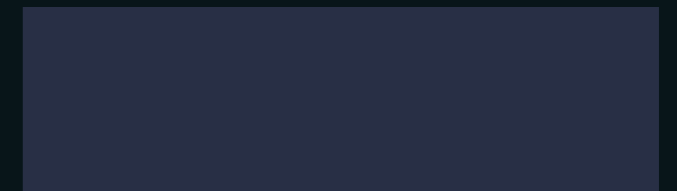
Soft Matt **NEW** SP-1018



Soft Matt SP-1022



Soft Matt **NEW** SP-1016



Soft Matt SP-1023

AG Soft Matt Premium is the newest addition to the Premium Range.

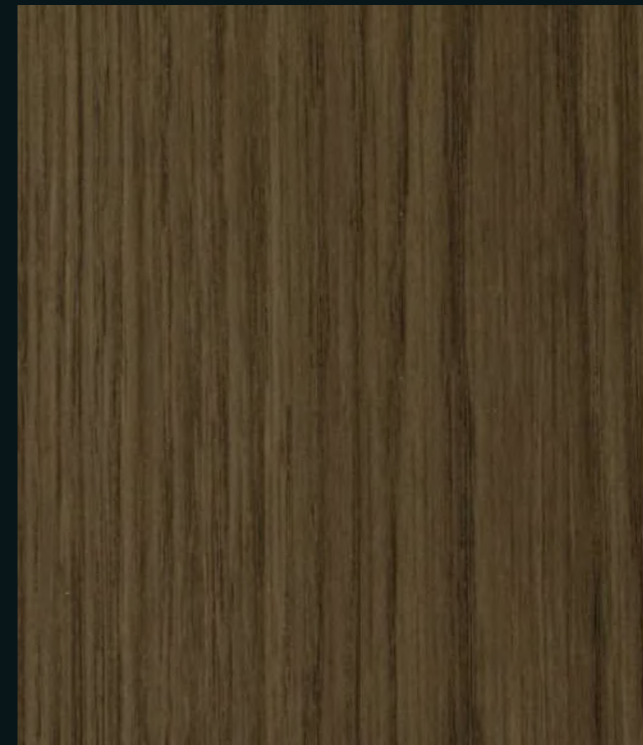
Using the latest in multi-layer printing technologies, Soft Matt Premium provides a soft-to-the-touch sensation while offering anti-fingerprint resistance.

PREMIUM WOOD

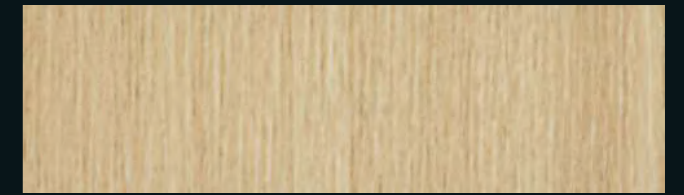


PREMIUM WOOD

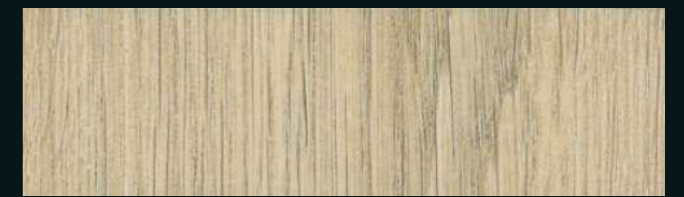
PREMIUM WOOD



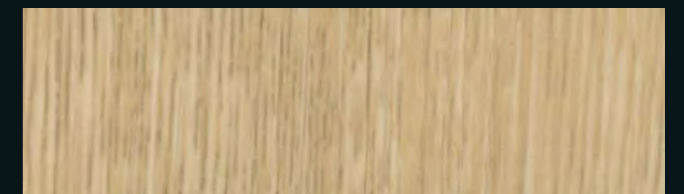
Oak **NEW** SP-1039



Ash SP-1054



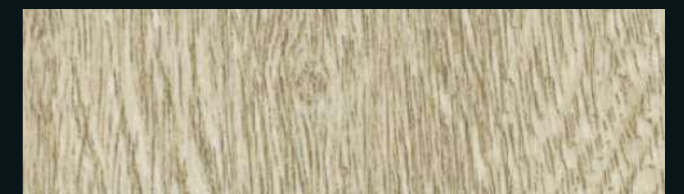
Oak SP-1058



Ash SP-1045



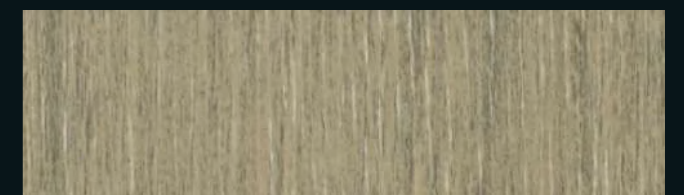
Oak SP-1057



Standard Oak SP-1060



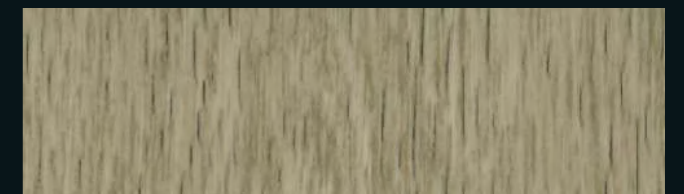
Pine SP-1049



Teak SP-1053



SP-1044



Oak SP-1041

Surfex Premium Wood Series simulates the natural aesthetics of wood with a realistic and lifelike appearance. Using advanced technology, it creates texture, tone, and depth of the material it symbolizes while offering anti-scratch properties.



Standard Oak

SP-1062



Ash

SP-1047



Rainy Teak

NEW SP-1038



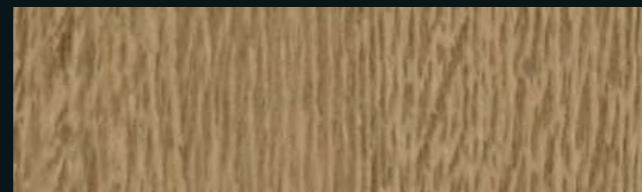
Oak

SP-1059



Standard Oak

SP-1061



Classic Oak

SP-1064



Ash

SP-1046



Oak

SP-1042



Classic Oak

SP-1065



Teak

SP-1051



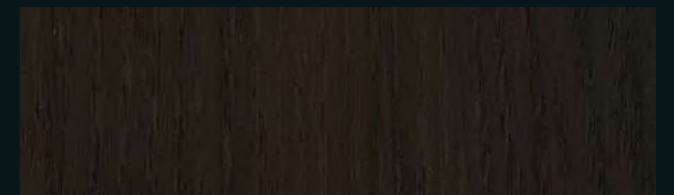
Teak

SP-1052



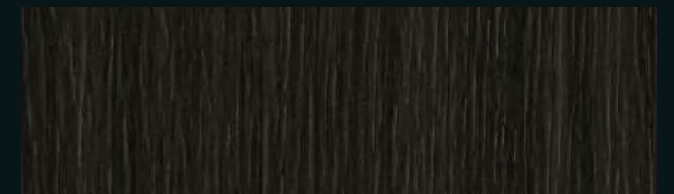
Pine

SP-1050



Ash

SP-1048



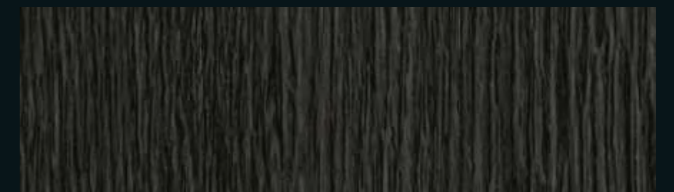
Ash

SP-1056



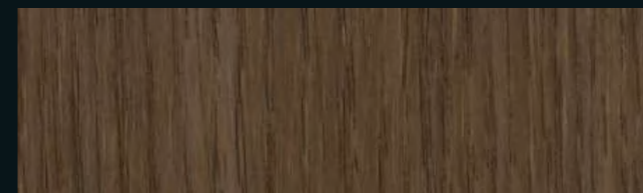
Primary Oak

NEW SP-1040



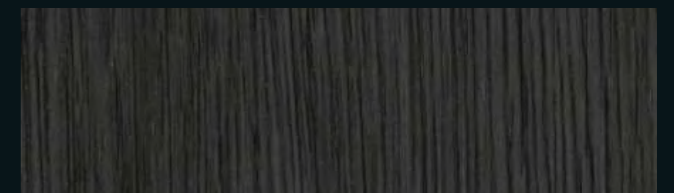
Standard Oak

SP-1063



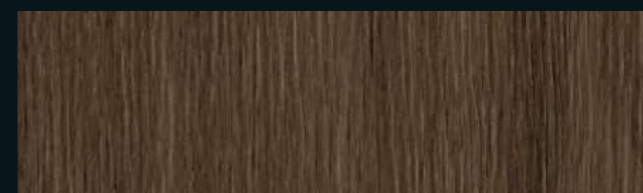
Oak

NEW SP-1037



Oak

SP-1043



Ash

SP-1055

PREMIUM METAL



SP-1011

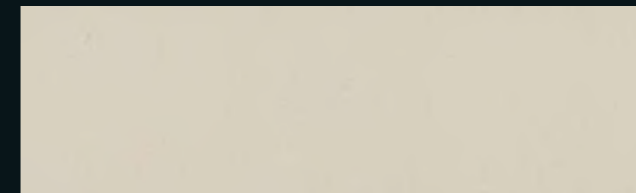
AG Metallic Range utilizes a variety of precious and semi-precious metals, including copper, steel, and gold. Using innovative technology and advanced design, **AG** Metallic Range closely resembles the metals they portray as lifelike. The multi-layer anti-abrasive materials capture both beauty and strength throughout the **AG** Metallic Range, using a variety of methods.

PREMIUM METAL



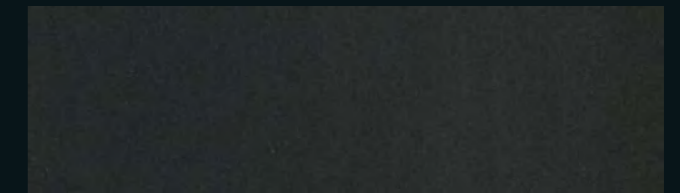
Blackened Steel (Blue)

NEW SP-1007



Matt Solid

SP-1011



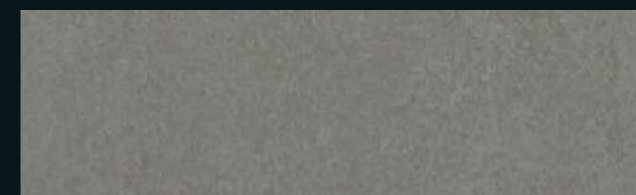
Blackened Steel (Bronze)

NEW SP-1008



Minimal Cloud

SP-1009



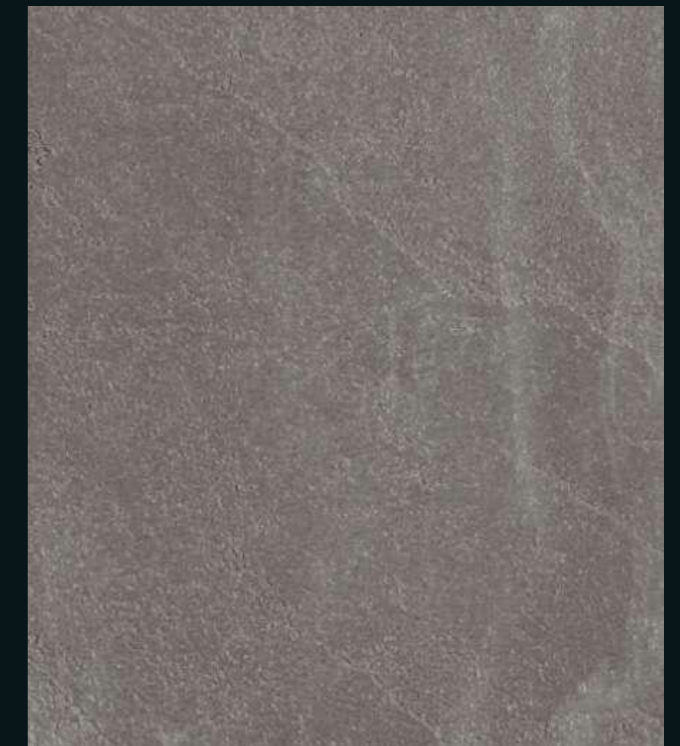
Minimal Cloud

SP-1010



Metal Slate

SP-1012



Cloud Metal

SP-1013

PREMIUM STONE



SP-1031

Marble is a natural stone renowned for its beauty and elegance. **AG**'s Stone range features a selection of exquisite varieties sourced from the best quarries across the world, including Travertine, Carrara, Volakas, Onyx, and Red Chigen. You'll love **AG**'s premium marble range for its lightweight and anti-abrasive properties that provide durability and sustainability.

PREMIUM STONE

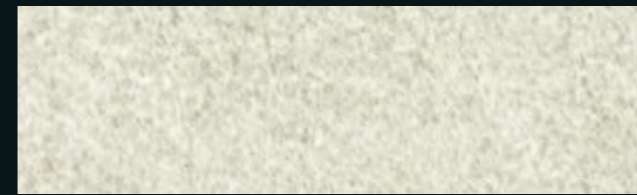
PREMIUM STONE



Matt Marble **NEW** SP-1030



Matt Marble **NEW** SP-1031



Travertine SP-1034



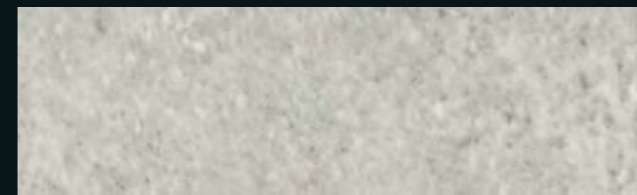
Travertine SP-1036



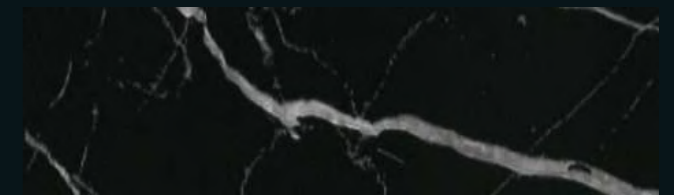
Travertine SP-1035



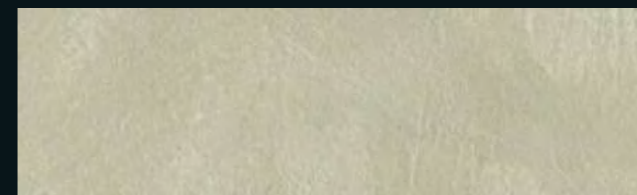
Matt Marquina **NEW** SP-1032



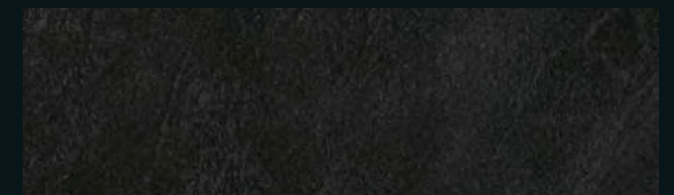
Urban Stone **NEW** SP-1026



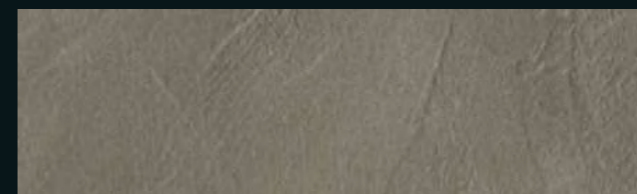
Matt Marquina **NEW** SP-1033



Brush Cement **NEW** SP-1027



Brush Cement **NEW** SP-1029



Brush Cement **NEW** SP-1028



Brush Cement **NEW** SP-1029

PREMIUM FABRIC

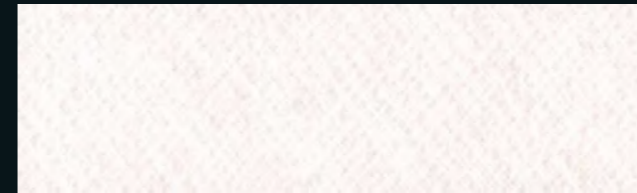


SP-1006

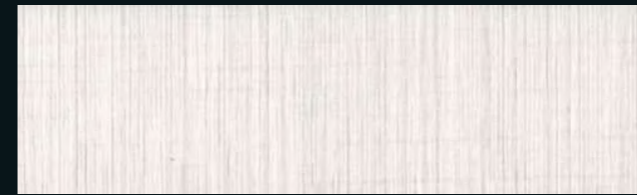
AG fabric range utilizes multi-layer embossing advancements to offer a textured touch and extra durability making it ideal for high-traffic areas.

PREMIUM FABRIC

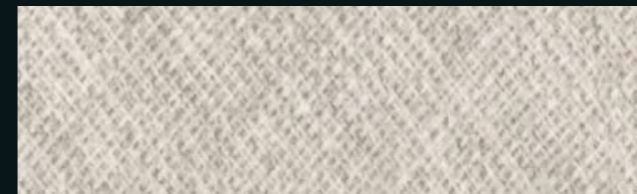
PREMIUM FABRIC



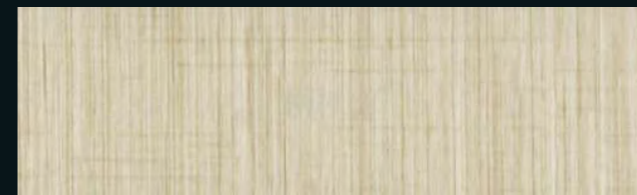
Real Fabric SP-1006



Warm Linen SP-1001



Real Fabric SP-1004



Warm Linen SP-1002



Real Fabric SP-1005



Warm Linen SP-1003

METAL



SM-2010

The Metallic Range features a selection of copper, steel, gold, and various precious and semi-precious metals. **AG** innovative technology and advanced design closely resemble the metals they portray, with multi-layer anti-abrasive materials that capture both beauty and strength throughout the **AG** Metallic Range.

METAL

METAL



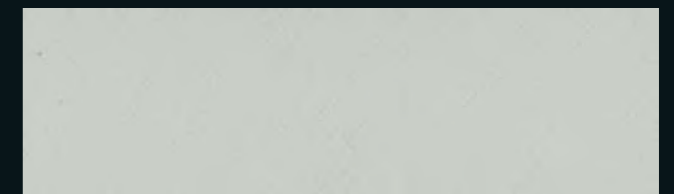
Dolphin Bronze **NEW** SM-2010



Metal SM-2015



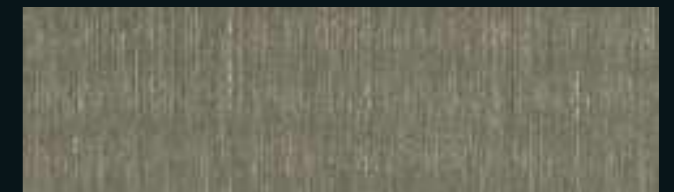
Metal SM-2021



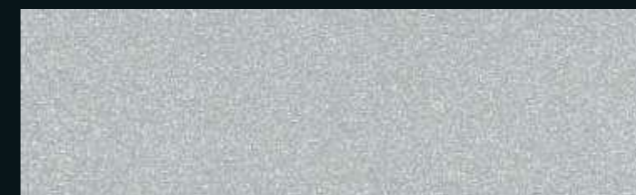
Saffiano SM-2024



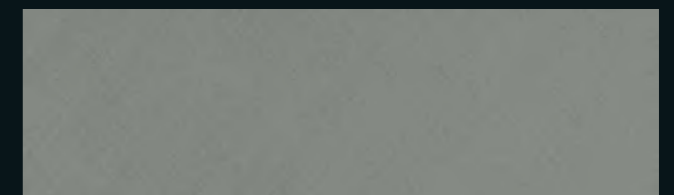
White Gold **NEW** SM-2001



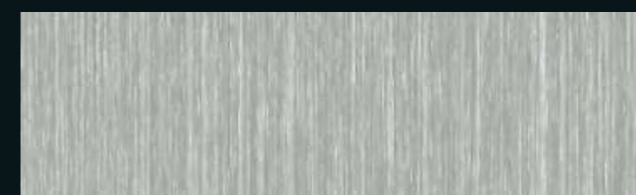
Metal Hairline Silver **NEW** SM-2011



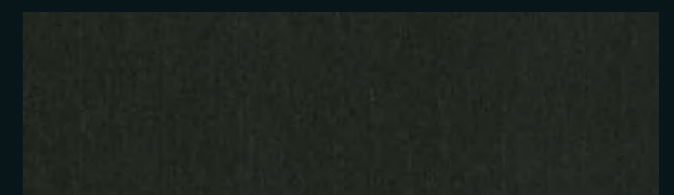
Metal SM-2019



Saffiano SM-2025



Metal SM-2022

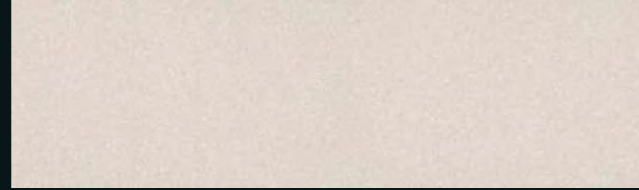


Metal Hairline Copper **NEW** SM-2014

METAL



Saffiano SM-2023



Peach Gold NEW SM-2002



Metal SM-2016



Rose Gold NEW SM-2005



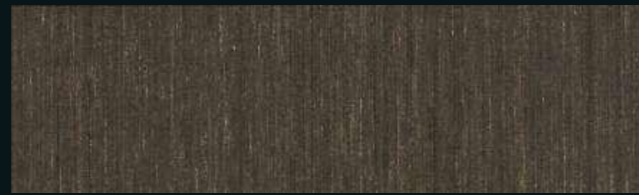
Metal SM-2020



Rose Gold Hairline NEW SM-2012



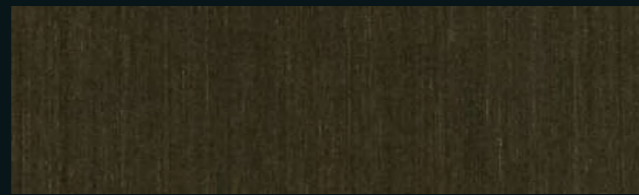
Champagne Gold NEW SM-2004



Red Bronze NEW SM-2008



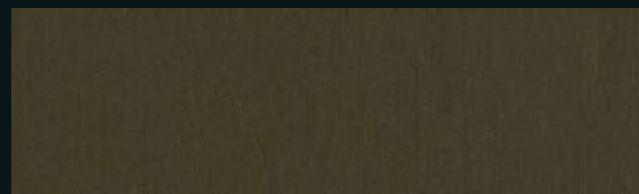
Metal Gold NEW SM-2003



Yellow Bronze NEW SM-2007



Metal SM-2017



Dolphin Bronze Hairline NEW SM-2013

METAL



Cement Metal SM-2027



Bronze Gold NEW SM-2006



Dark Bronze NEW SM-2009



Metal SM-2018



Saffiano SM-2026



STONE - MARBLE

STONE - MARBLE



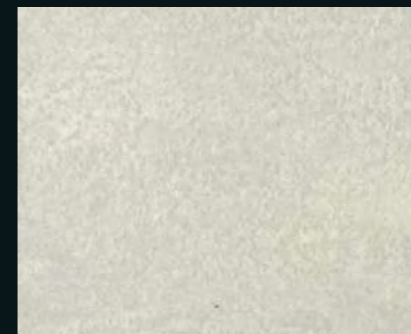
Marble **SS-3017**



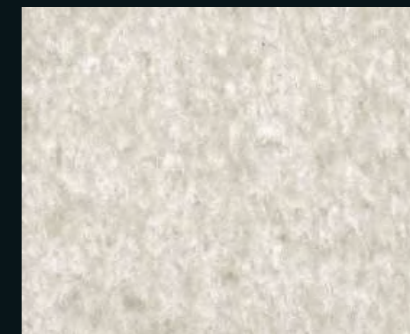
Sugar Stone **SS-3023**



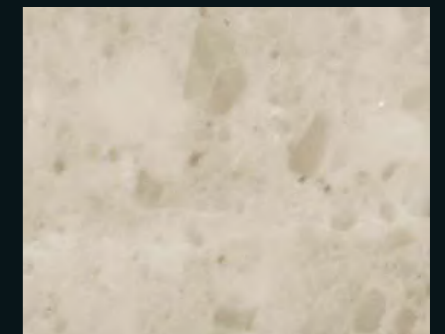
Carrara **SS-3020**



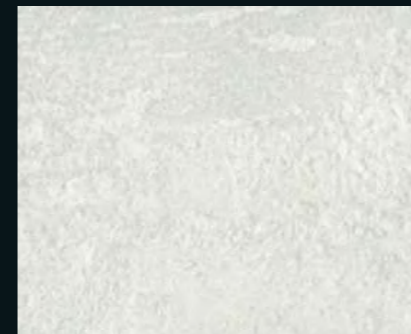
Modern Stone **SS-3007**



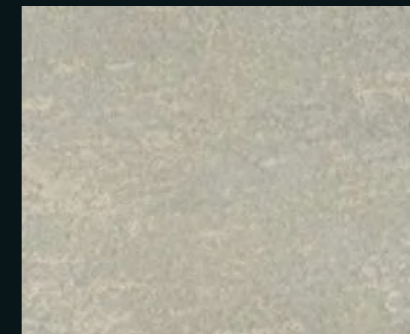
Urban Stone **SS-3001**



Marble **SS-3018**



Modern Stone **SS-3006**



Modern Stone **SS-3008**



Peacock Natural **SS-3004**



Modern Concrete **SS-3010**



Concrete **SS-3011**



Concrete **SS-3021**

The **AG** Stone range comprises a selection of exquisite natural stones, including marble, sourced from the best quarries across the world. The range includes varieties such as Travertine, Carrara, Volakas, Onyx, and Red Chigen, and **AG** marble range is lightweight and provides anti-abrasive solutions, making it a sustainable and durable choice for any project.

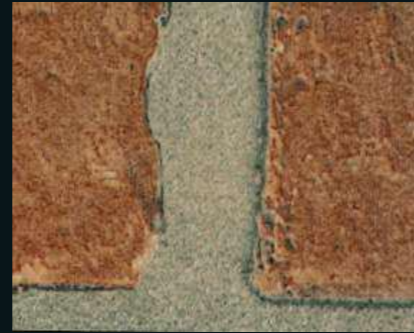
STONE & MARBLE



Modern Stone **SS-3009**



Concrete **SS-3002**



Bricks **SS-3024**



Aspetto **SS-3016**



Rustic Stone **SS-3022**



Real Stone **SS-3012**



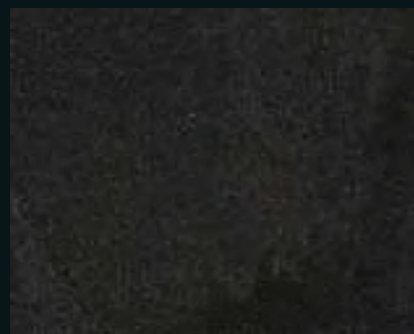
Peacock Natural **SS-3005**



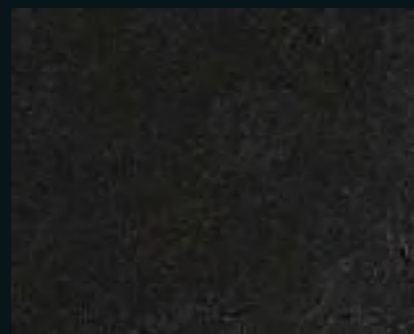
Marble **SS-3019**



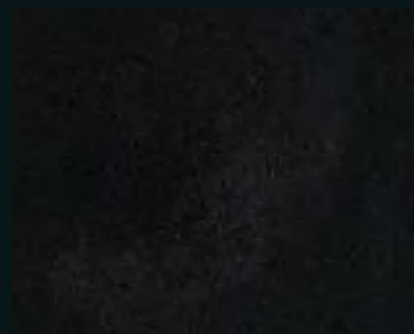
Concrete **SS-3003**



Aspetto **SS-3014**



Aspetto **SS-3015**



Aspetto **SS-3013**

STONE & MARBLE



SS-3019

FABRIC-LAETHER

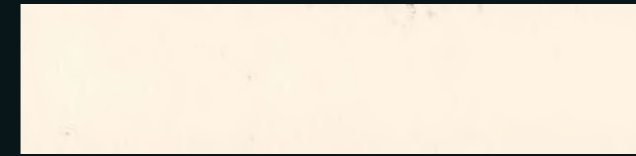


SF-4001

AG fabric range features multi-layer embossing advancements to provide a textured touch and extra durability, ideal for high-traffic areas. The range also includes luxurious leather finishes that add a touch of sophistication to any project.

FABRIC - LEATHER

FABRIC & LEATHER



Leather SF-4014



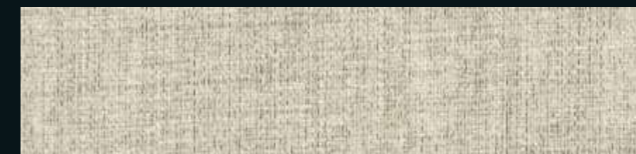
Plain Linen SF-4007



Tweed SF-4010



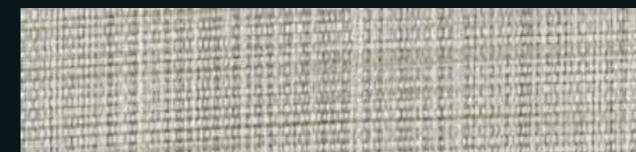
Linen SF-4004



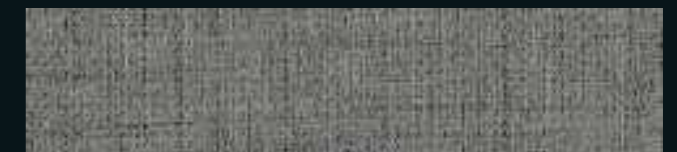
Fabric SF-4001



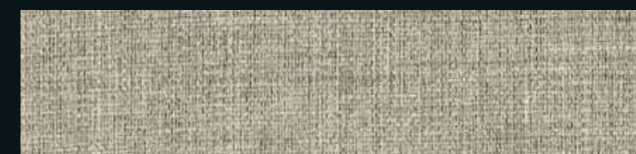
Linen SF-4005



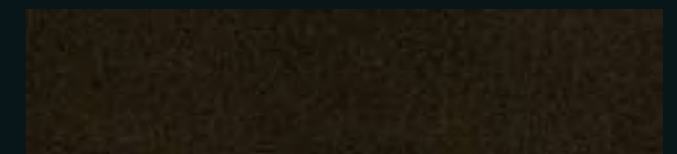
Plain Linen SF-4008



Linen SF-4006



Fabric SF-4002



Leather SF-4011



Fabric SF-4003



Metal Leaf SF-4013



Plain Linen SF-4009



Luxury Metal SF-4012

WOOD



SW-6019

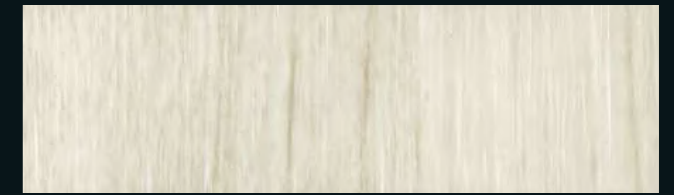
The **AG** Wood Series simulates the natural aesthetics of wood with a realistic and lifelike appearance. Utilizing the latest technology, it creates texture, tone, and depth of the material it symbolizes while offering anti-scratch properties.

WOOD

WOOD



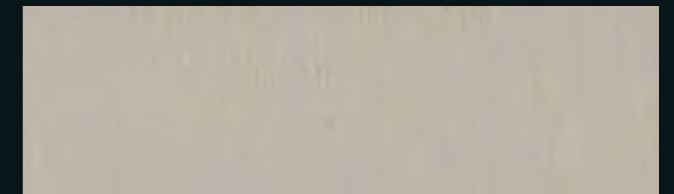
Washed Ash **NEW** SW-6025



Teak SW-6034



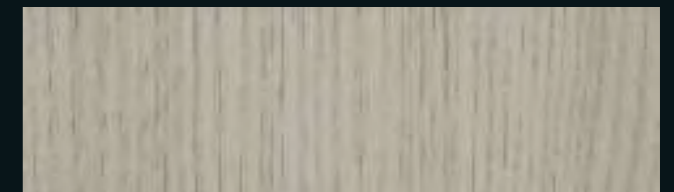
Light Oak **NEW** SW-6020



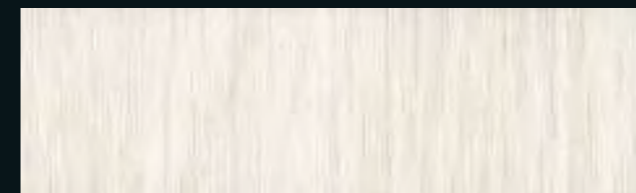
Multi Printing Wood SW-6030



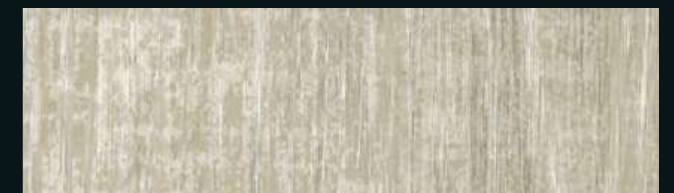
Multi Printing Wood SW-6029



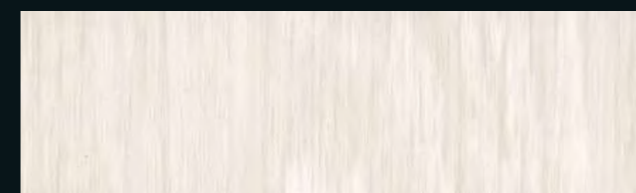
Oak **NEW** SW-6015



Light Oak **NEW** SW-6019



Vintage Oak SW-6033



Ash SW-6008

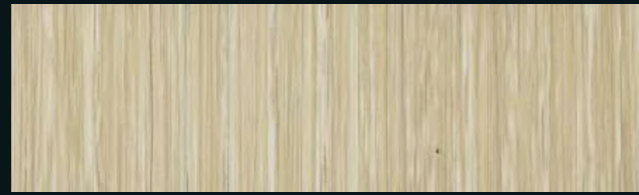


Wizard Grain SW-6006

WOOD



Washed Ash **NEW** SW-6022



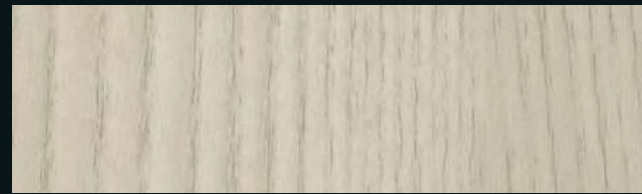
Elm **NEW** SW-6017



Acacia SW-6044



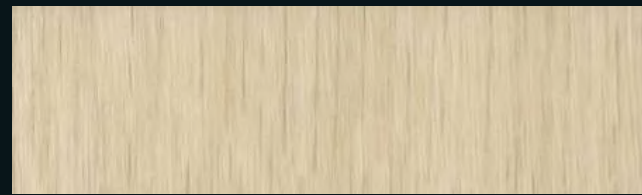
Wizard Grain SW-6004



Oak **NEW** SW-6014



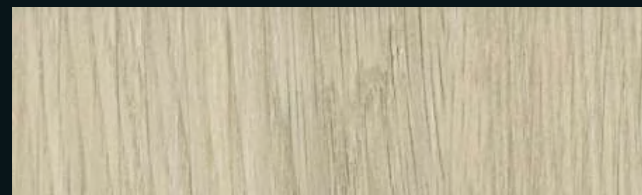
Oak **NEW** SW-6009



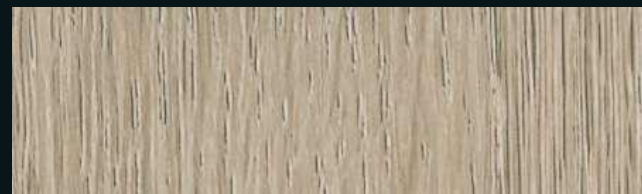
Light Oak **NEW** SW-6021



Amazahoue **NEW** SW-6028



Oak SW-6037

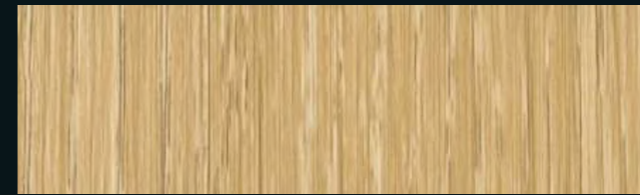


Washed Ash **NEW** SW-6023

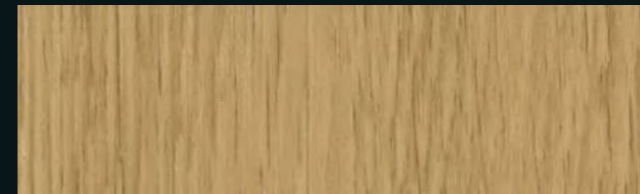
WOOD



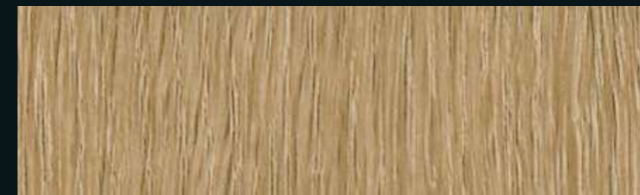
Maple **NEW** SW-6012



Elm **NEW** SW-6018



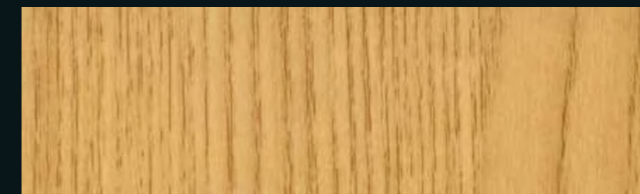
Oak **NEW** SW-6010



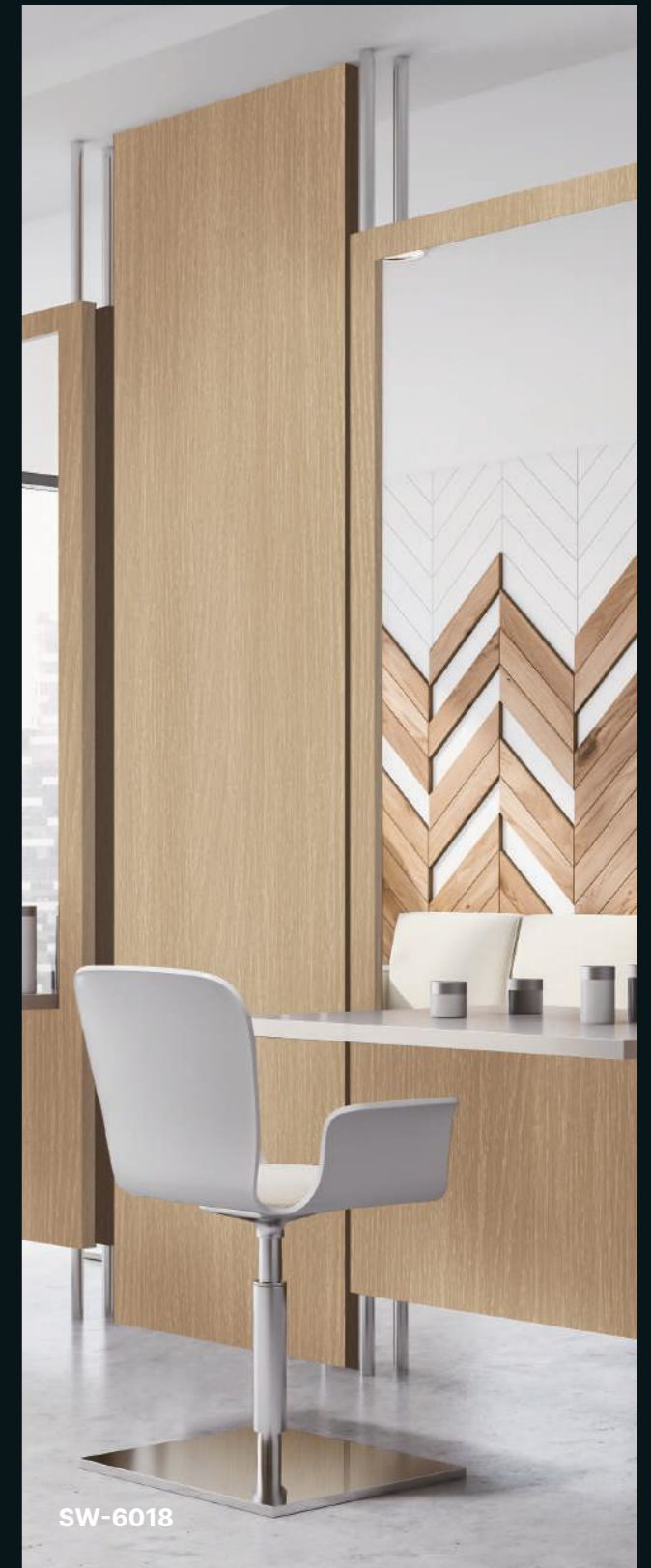
Washed Ash **NEW** SW-6026



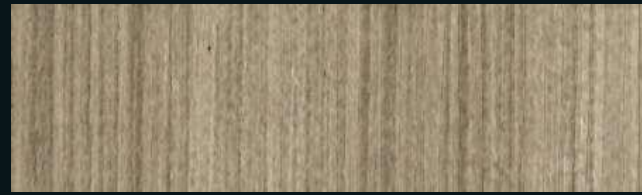
Oak SW-6038



Oak **NEW** SW-6016



SW-6018



Pine SW-6007



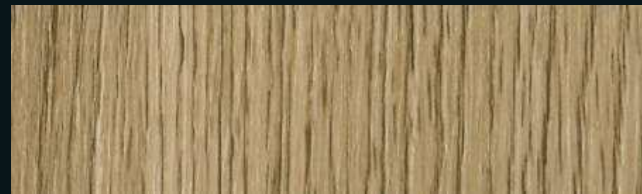
Ash SW-6001



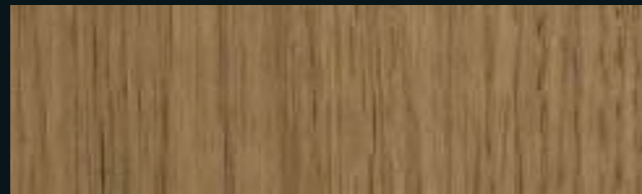
Washed Ash **NEW** SW-6024



Wizard Grain SW-6005



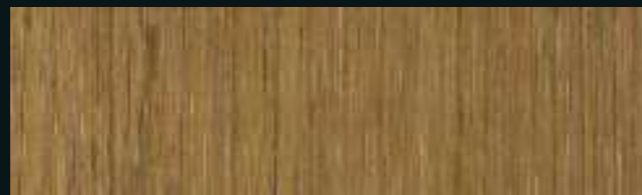
Oak SW-6039



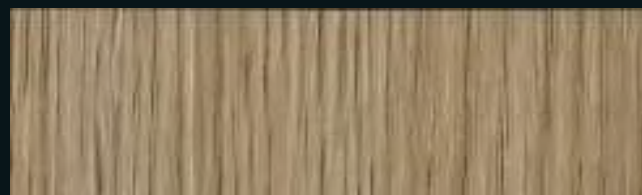
Primary Oak SW-6003



Maple **NEW** SW-6013



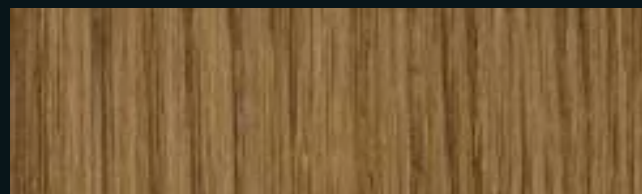
Vintage Oak SW-6031



Oak SW-6041



Teak SW-6002



Oak SW-6043



Oak **NEW** SW-6011



Oak SW-6036



Teak SW-6035



Oak SW-6040



Amazahoue **NEW** SW-6027



Vintage Oak SW-6032



Golden Teak SW-6042



SW-6032

VERSA-TILE



SV-7002

VERSA-TILE

VERSA-TILE



Herringbone

SV-7004



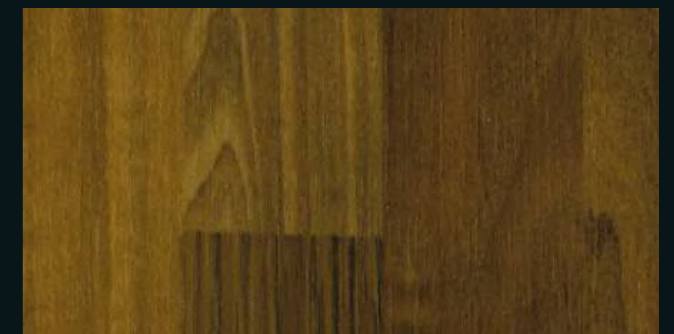
Herringbone

SV-7003



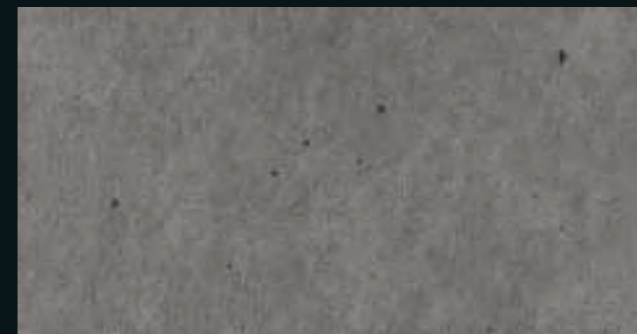
Carrara

NEW SV-7001



Compile Wood

SV-7005



Concrete

SV-7006



Marquina

NEW SV-7002



Travertine

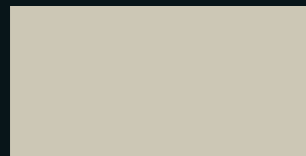
SV-7007

AG Versa-tile offers a unique solution for refurbishing spaces without the need to remove substrates. The luxury architectural vinyl can be applied to tiled areas and floors, providing a hard-wearing surface that is both creative and robust.

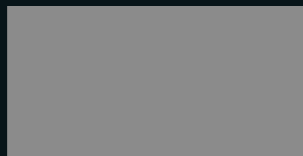
ANTI-BACTERIA



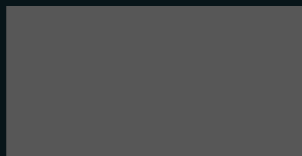
SA-8002



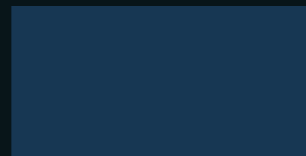
SA-8001



SA-8002



SA-8003



SA-8004

Our Antibacterial film is an excellent solution for schools, medical institutions, government offices, and other commercial and residential facilities. With its antibacterial properties, it offers an added layer of protection for high-risk environments.

ANTI-BACTERIA



SA-8001