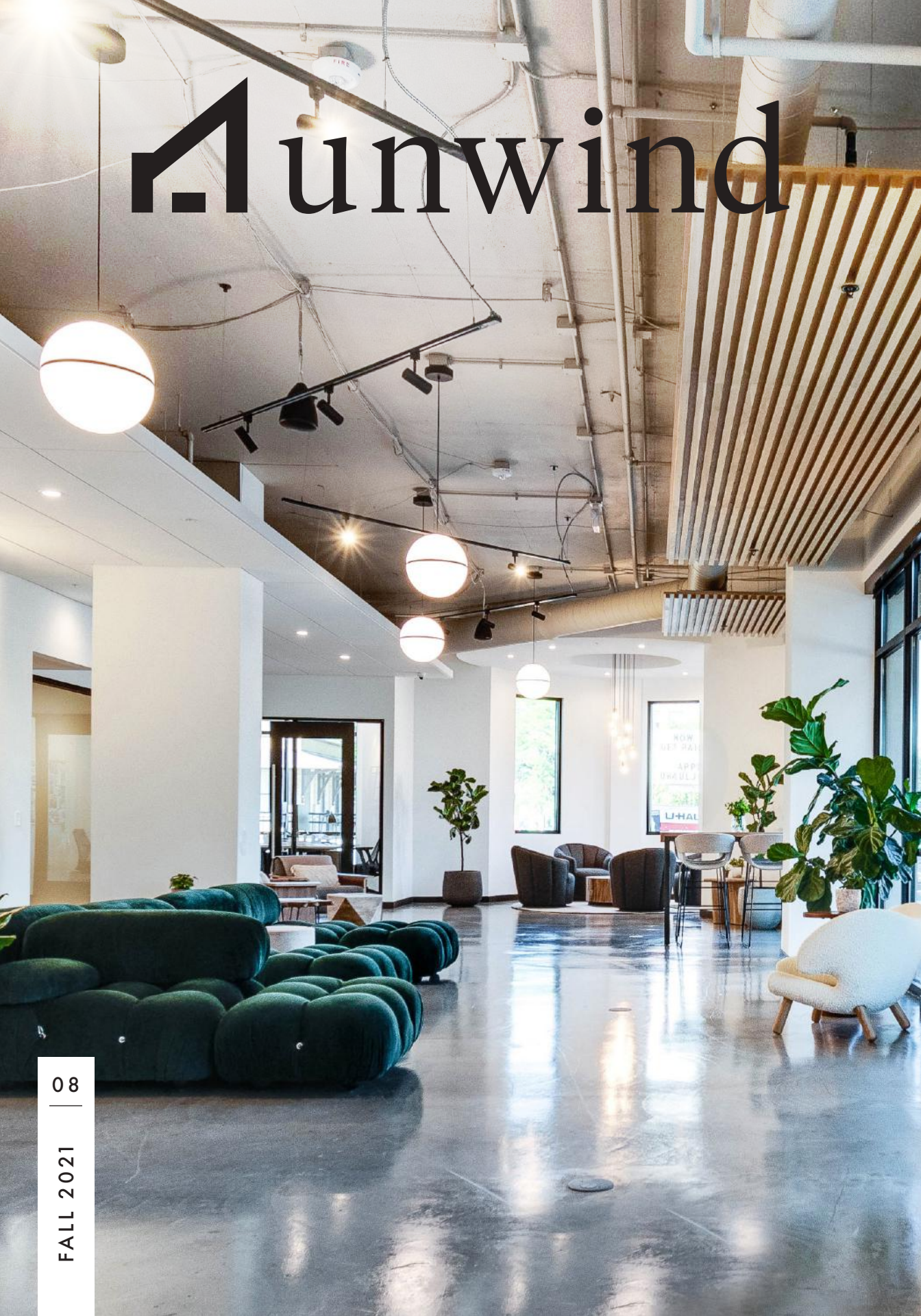


Unwind





**A SEASON OF
THANKFULNESS.
A FULL HEART.**

As the end of the year draws near, we begin to reflect on months gone by. And during this fall season of gratitude, we have some very important people to thank. At the top of the list, the Madison community for voting Sprinkman Real Estate *Madison Magazine's* Best of Madison GOLD. Trust me, the feeling is mutual. We feel so fortunate to work with such lovely clients, like the ones featured on page 8. We also want to take a moment to thank our partners for helping us realize the dream of our new home for Sprinkman Real Estate and Sprinkman Design Collective. To find out more about our new space at West Washington Place, see page 4. You can also read about our beautiful and delicious new neighbor, the Harvey House, on page 10. And on the subject of beauty, our own Sprinkman Design Collective has some fall-inspired tablescapes tips on page 12, for taking inspiration from the season and adding it to your living spaces.

Thank you to our amazing clients for putting your trust in us. We are grateful for you, for Madison, and for being able to do the work we love.

Shelly Sprinkman

Lake Homeowner + SRE Principal



SPRINKMAN
REAL ESTATE



It's Our Turn to Pop the Champagne

Thank you for your continued support and voting us Best Of Madison!

Follow us on FB + IG @SprinkmanRealEstate /SprinkmanRealEstate.com

New Office Spotlight

622 W Washington Ave, Suite 100



Design by Sprinkman Design Collective

We've Got a Thing for Great Spaces

Introducing the new offices of
Sprinkman Real Estate + Sprinkman Design Collective

Over time, as our company grew, it became obvious we were outgrowing our space at Machinery Row. The addition of **Sprinkman Design Collective** to our group clinched the deal. Our new 6,250 square-foot office in West Washington Place could not be more ideal for us and our clients. The new space uses a hybrid approach to officing, similar to coworking, and incorporates the brilliant layout of Denise Quade Design. By making great use of flexible NanaWalls, the smart design of our office also features technology from Elan and Lutron for full-home automation with HVAC, theatre + music, window treatments, and security integration.



The best feature of our new office space, however, is how it doesn't feel like office space at all. Our talented [Sprinkman Design Collective](#) team incorporated thoughtful design – with conference rooms and smaller offices with desks – to keep with the vibe of a peaceful and relaxing home. The open concept features a variety of spaces to work, gather, and relax. Our new space allows us to work more efficiently in serving our clients while keeping distractions at bay.

“The right location combined with a perfect design is absolute bliss.”



A special thanks to Stevens Construction Corp, Denise Quade Design, Destree Design Architects, Lightman Technology, and of course Sprinkman Design Collective for helping us bring our vision to reality.

WE KNOW LUXURY

WHEN IT'S TIME TO MOVE,
SIT BACK. WE'VE GOT THIS.



813 Woodward Dr
Madison, Lake Mendota
\$3,250,000 ACTIVE



4908 Winners Cir
Springfield
\$2,650,000 ACTIVE



4817 St Annes Dr
Middleton
\$1,849,000 ACTIVE



3900 Meridian Cir
Middleton
\$1,100,000 ACTIVE



2912 Waunona Way
Madison, Lake Monona
\$2,200,000 PENDING



4891 Enchanted Valley Rd
Springfield
\$1,365,000 PENDING



1077 Farwell Dr
Maple Bluff, Lake Mendota
\$2,500,000 SOLD



1634 Sherman Ave
Madison, Lake Mendota
\$2,050,000 SOLD



5536 Lake Mendota
Shorewood Hills, Lake Mendota
\$1,850,000 SOLD



739 Farwell Dr
Maple Bluff, Lake Mendota
\$1,695,000 SOLD



3113 Kirkwall St
Fitchburg
\$1,568,500 SOLD



3506 Lake Mendota Dr
Shorewood Hills, Lake Mendota
\$1,550,000 SOLD



6713 Shamrock Glen Cir
Springfield
\$1,375,000 SOLD



4853 St Annes Dr
Middleton
\$1,275,000 SOLD



125 N Hamilton St #1005
Downtown Madison
\$1,250,000 SOLD



4890 Winners Cir
Springfield
\$1,175,000 SOLD



647 Summit Rd
Maple Bluff
\$1,150,000 SOLD



4655 Tonyawatha Tr
Monona
\$1,000,000 SOLD

**2021 LUXURY
TEAM STATS**

**\$1
MILLION+**
SALES

**#1 AGENT IN
DANE COUNTY**

**#1 Agent in
Dane County
with 12 homes
sold at \$1M+
and a YTD 2021
Sales Volume of
\$50,510,551**

**#1 BROKERAGE IN
DANE COUNTY**

**#1 Brokerage
in Dane County
with 30 homes
sold at \$1M+
and a YTD 2021
Sales Volume of
\$246,057,048**

*2021 data pulled from
SCWMLS on 10/7/21*



You. Your home. A love story.

“Working with Sprinkman Real Estate was absolutely the best real estate experience we ever had. We bought and sold a home through [Sprinkman] and found [their] level of expertise and professionalism was outstanding. Our home sold quickly -- and we think in large part because of the marketing package created by Sprinkman Real Estate. The listing photos and video were so well done -- it made us almost decide NOT to sell that home! But, [they] also helped us purchase our new home and feel great about both transactions. From start to finish, we are confident we made the right choice for a real estate professional and the organization that supports [their] work. If you are looking for results, excellent and timely communication, professionalism, choose Sprinkman Real Estate.”

— *Happy Clients*

Your *Life* Deserves the Right Mortgage

At Bell Bank Mortgage, we will find the perfect mortgage to suit you – whatever phase of life you are in. Whether you're relocating, building,



refinancing, buying your first home, purchasing a lake home or down-sizing – we have you covered. Take comfort knowing that the entire loan process – from underwriting to funding – is in-house and **guided by your local, trusted, Madison-area lender, John Schroder.**

In addition to conventional fixed- and variable-rate loans, Bell also offers these in-house specialty options:

- Fixed-rate jumbo loans
- Physician and dentist loans
- One-time close on fixed-rate construction remodeling loans
- Bridge loans

Bell's in-house team has been ensuring quick, accurate and smooth closings since the company opened its doors for business in 1880. Experience the Bell difference today. Call, text or email John to start the conversation.



John M. Schroder

Bell Bank Mortgage

608.609.5191

johnschrodermortgages.com

NMLS 967896

Bell  **Bank**
Mortgage

HARVEY HOUSE

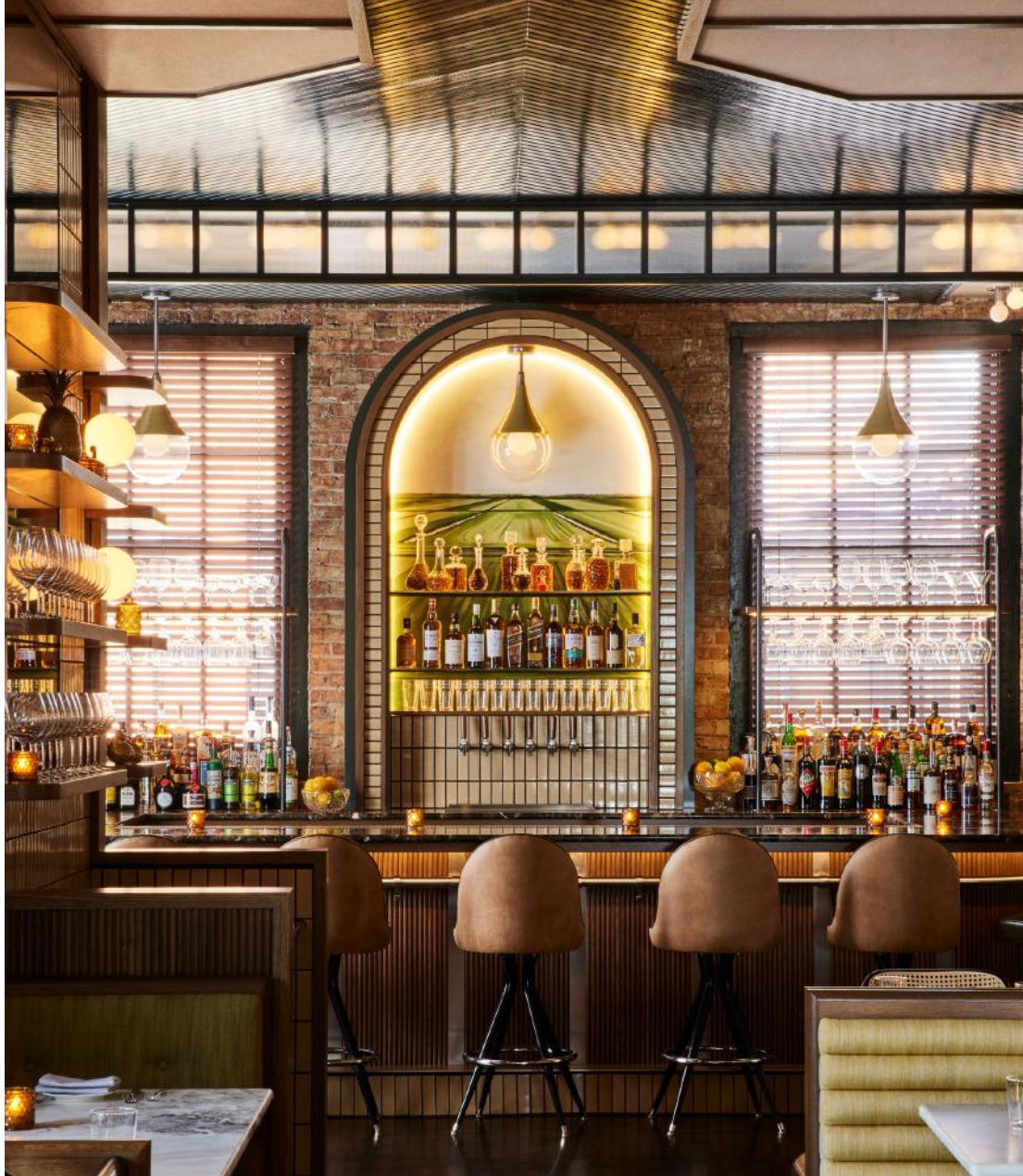
A CELEBRATION OF
WISCONSIN'S ICONIC
SUPPER CLUBS.

Tucked behind Madison's historic train depot near the new headquarters of Sprinkman Real Estate and Sprinkman Design Collective, the Harvey House is just the new neighbor we all need. The ambitious modern supper club is the love child of midwest natives Shaina and Joe Papach who bring history, culture, and culinary inspiration to the newly renovated train car and baggage claim house. The stunning, modern result is where 19th-century history and modern design meet, easily one of the most striking spaces in Madison.

Sipping on a classic Wisconsin whiskey sour, ice-cold martini, or signature Jerry Thomas Manhattan, you can almost hear the buzz of the golden era train station and the post-prohibition energetic sounds of Dizzy Gillespie and Charlie Parker. The unique menu offerings celebrate midwestern roots with a modern twist. The Old Fashioned duck served with satsumas, Door County cherries, and caramelized fennel will have you dreaming of more. The Superior Whitefish with a pumpernickel crust served with savoy cabbage, and horseradish sabayon will take you right to the shores of the icy cold great lake. The Harvey House reminds us that restaurants can once again be destinations and midwest hospitality means friendships can be as easy as saying hello to the new neighbors.



@harveyhouse



“Joe + Shaina’s vision and expertise lead you on a delicious journey of traditional Wisconsin meals that you won’t forget.”

- Harvey
House diner

Menu Highlights

Starters Wild mushroom toast with frisée lettuce and parsley vinaigrette; chicken liver mousse with pickled shallots and port wine jelly; and salmon tartare with red onion crème Fraiche and egg mimosas.

Dinners Slow-cooked salmon with marinated beets, cucumber, dill, and beurre rouge; chicken cordon bleu with canoe-harvested wild rice, broccoli, prosciutto, and charred lemon jus; true eye of the rib with braised kale, carrots, pomme purée, and bordelaise.

Desserts Grasshopper ice cream bar with mint ice cream and chocolate cookie crunch; apple pie pavlova with spiced apples and meringue; Banana pudding with butterscotch, dark rum and Nilla wafers; and pumpkin ice cream sundae with chocolate + caramel sauce, and a ginger cookie.



FALL TABLESCAPE

BY SPRINKMAN DESIGN COLLECTIVE

Fall. A time to throw on your coziest sweater, gather with family and friends, and fill up on home cooking. Can you almost smell the turkey in the oven? Our mouths are watering.

We invite you to join us at our table to see the gorgeous tablescapes we're cookin' up. This year, we're thankful you're here with us.



<< LOOK: TRADITIONAL

That saying, “Don’t mess with tradition”? We get it. After all, there’s a reason why certain styles hang around year after year - it just looks and feels good. Here, we’ve featured a modern twist on a classic design. Matte black and gold silverware was set adjacent to plates from this Williams Sonoma collection, featuring a turkey pattern inspired by 18th century English transferware. Let your guests know you are thankful for them with a wooden tag hanging beautifully from a solid-colored bowed napkin. Back it all with a ramie fabric runner to create texture and warmth.



<< LOOK: COLORFUL ELEGANCE

Talk about cheerful! We fell in love with this table runner and loved how well it worked with both plate options. In this photo, it’s all about layering. We used a woven circle as a charger plate with a knotted fuschia table mat of the same size on top, allowing space between each colorful detail. In the main photo, we simplified it by nixing the placemats. By using such a different (but more neutral-colored) design of the turkey plate, it just works. This showstopper of a floral arrangement from Daffodil Parker gave us the inspo to add the same pheasant feathers to the simply rolled napkins to pull the entire look together.



<< LOOK: A LITTLE SPARKLE

Next to candlelight, gold sparkle beautifully illuminates in a low lit dining room. Enchant your guests and feature your scrumptious food with a placemat that does just that. Here, the elegant vintage china was given a fresh update when topped with these hip cheetah print napkins. Did you know that placing the napkin on a diagonal helps to create energy in the room? Hint: this method can also be used with couches, chairs, rugs, and art! No table runner is used here, letting this gorgeous marble topped table from Rove Concepts be the star of the show.

WE CANNOT WAIT TO HELP YOU WITH YOUR NEXT HOME PROJECT. LET’S CHAT!
info@sprinkmandesign.com / 622 W Washington Ave, Suite 100, Madison / +1 (608) 285.2316

YOU'RE INVITED

FRIDAY
11/12
2021
5-9 PM

Gallery Night

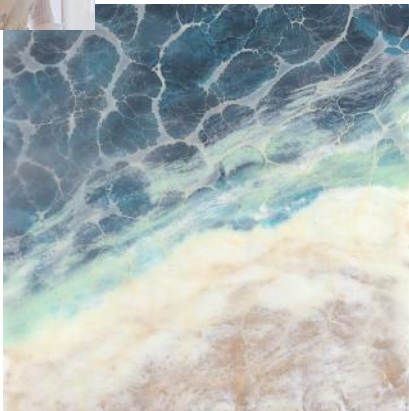
📍 622 W. Washington Avenue

Sprinkman Real Estate is proud to support MMoCA's Fall 2021 Gallery Night on Friday, November 12. Organized by MMoCA, Gallery Night is a long-time Madison arts tradition that showcases the city's vibrant arts community. We are excited to host two talented artists who will display their works at our new office at 622 W. Washington Avenue from 5-9 p.m. Enjoy drinks, hors-d'oeuvres, and custom-tailored music from professional DJ, Travis Beckum. There is no charge for admission.

"I've always considered myself to be creative but it wasn't until I discovered Encaustic that I felt my ideas had a place to take hold. Encaustic is like no other medium, it can feel almost like a sculpture. I am captured by the luminosity of the wax, the mystery of the layers, and the depth of the medium. I live in Madison with my two kiddos, husband, and rescue pup, Mo."



Katie J Stephenson
Encaustic Painting
katiejstephenson.com
@katiejstephenson.encaustics



Liubóv Szwako
Experimental Artist
triangulador.com
@triangulador

"My style is contemporary and impactful, featuring colorful punches of abstract geometry. Bravery, optimism, and humor thread through both my philosophy as an artist and my created works. Involved in an array of projects, from fine art to street art to murals, my penchant for doodling and self-taught graphic design has morphed into the vibrant, textured paintings, murals, and street art I create today."

LOVE THE LIFE



2022 MALIBU
21 LX



Gordy's Marine | @gordysmarine | #gordyslife
www.GordysBoats.com



Gordy's

now open!

Oconomowoc, WI (262) 354-0522 • Fontana, WI (262) 275.1563

Cobalt, Malibu, Axis, Everglades & Berkshire Sales • Cobalt Boat Rentals/Boat Club • Boat House Bar/Restaurant
Pro Shop with Gordy Gear • Ski/Board/Surf School • Wakeboard/Surf Camp • SUP Rentals • Fuel • Boat Service & Storage



Sprinkman Real Estate
622 W Washington Ave, Suite 100
Madison, WI 53703



Considering a move? Give us a call—

Shelly Sprinkman	Trey Sprinkman	Julie Bernauer
(608) 220.1453	(608) 354.4000	(608) 219.6492

We appreciate your continued referrals!



middleton

We work hard for you!

If you've got a house to sell, we'll get it done. With over 20 years of experience, we're not just seasoned negotiators, we're knowledgeable local experts who have valuable connections to Madison and the people who want to buy here. Our boutique approach means you don't get lost in the shuffle of a big firm because we're with you every step of the way. But make no mistake, we're a full-service brokerage with agents who know how to maximize your sale price and find the right buyers for your home. Let's get started!