

# THE FIELD JOURNAL



# PEACEHAVEN



## VIEW FROM THE LOFT

Dear Friends,

Earlier this month, I did something I had not done in a long time. I danced. In public. In front of an audience. For a cause.

The Arc of Greensboro invited me to dance with my 23-year-old daughter, Roxie, in their annual Dancing With Our Diamonds fundraiser, and I said yes, fully understanding the ask. Their CEO knew exactly who she was calling: the CEO of another disability services organization with my own capital campaign underway. We talked about it openly. She called anyway. Because we both know our region is big enough, and good enough, to support more than one dream at a time, especially when those dreams are aligned around a common mission.

Roxie attends the Arc's Empower U program, where she has found her people. She's made real friends there, and her confidence and communication have grown in ways her mom and I notice every day. All of that showed up in our rehearsals. She was prepared, present, and fully committed, and on the night of the performance, she was radiant. I found myself leaning on her energy, and she rose to every moment. Dancing with her reminded me what we mean when we talk about abundance – that people of all abilities bring something to the table the rest of us genuinely need.

**“people of all abilities bring something to the table the rest of us genuinely need”**

That lesson is alive in everything we are building right now. Our Community Center is taking shape, and we are closing in on our \$18.5 million Different Together Campaign goal. We are not finished. But because of you, we are close.

Thank you for believing in abundance with us.

Phelps Sprinkle, CEO

View From The Loft	1
A Landmark Achievement	2
Capital Campaign Update	3
Naming Opportunities	4
It Takes a Community	6
A Place to RISE	7
Seeds of Hope	8
Johnny's Story	9
Board Spotlight	10
Here We Grow	11
Brewing Community	12



# A LANDMARK ACHIEVEMENT

*Peacehaven enters a new chapter of person-centered support.*

Peacehaven has reached a milestone worth celebrating: we are now accredited by **CQL | The Council on Quality and Leadership**.

For organizations serving people with intellectual and developmental disabilities, CQL accreditation is more than a credential. It is a commitment to person-centered excellence and to keeping each person's goals, choices, safety, dignity, relationships, and quality of life at the center of the work. People are more than recipients of services or participants in programs. Peacehaven's accreditation reflects a commitment to recognizing each person as a full member of the community with their own goals, relationships, and aspirations.

CQL asks organizations to look beyond health and safety alone, and to ask whether people are known, respected, connected to community, and supported in pursuing lives that reflect their own goals and choices. That distinction reflects modern person-centered practices that emphasize autonomy, informed choice, self-direction, and meaningful participation in community life. For Peacehaven, this also includes expanding opportunities for Competitive Integrated Employment (CIE) – real jobs, in real community settings, where people with I/DD can contribute their gifts, earn income, build confidence, and be known as coworkers, neighbors, and friends.

This accreditation also comes at a meaningful time of growth. As a North Carolina Medicaid provider, Peacehaven currently offers **Community Living & Support, Respite, and Supported Employment**, with additional services planned in 2026, including **Residential Supports, Supported Living, Day Support, and Community Networking**.

**For more on Peacehaven's services, contact:**

Brandon Singerman, M.Ed., Q.P.  
VP of Programmatic Operations  
[brandon.singerman@peacehavenfarm.org](mailto:brandon.singerman@peacehavenfarm.org)



Together, these services allow Peacehaven to walk alongside individuals and families with greater clarity, compassion, and consistency. Families navigating Medicaid services often face complicated systems and difficult decisions. Peacehaven's promise is to offer guidance they can trust, transparent communication, shared decision-making, and a community where people are not only supported, but truly belong.

This next chapter will also help programs like **RISE & SHINE** grow beyond the farm – creating more opportunities for supported employment, meaningful day programming, and community connection in places like First Baptist Church in Greensboro, with future service expansion planned for Burlington in late 2026.

The team at CQL made it clear that accreditation is an “incredible accomplishment” to share with employees, families, board members, peers, and the broader community. And we agree! Additionally, this moment for Peacehaven is about readiness.

We are ready to serve more people.  
Ready to support more families.  
Ready to grow with wisdom, accountability, and heart.

Most of all, we are ready to keep building a community where people of all abilities can live meaningful, connected lives on the farm, in the community, and wherever belonging is needed next.

# DIFFERENT TOGETHER

## A Capital Campaign Update

MAIN ENTRANCE



**23,000 sq. ft. of belonging.**

The keystone for our full vision of an integrated community for people of all abilities. Together we are becoming a **statewide model with statewide validation.**



TERRACE LAWN

SCAN HERE



JOIN OUR **DIFFERENT TOGETHER** CAMPAIGN

**\$15.1M raised**

**\$3.4M to go**

**\$18.5M GOAL**



*Peacehaven has been so welcoming! Seeing everyone everyday with a bright smile really shows how much passion and purpose everyone has. I'm grateful for this opportunity as I get to learn more about the mission and how it can create a life-changing experience for all.*

*Kelly Ocampo  
SECU Public Fellows Intern  
UNC Greensboro*

# EVERY NAME WRITES THE STORY OF BELONGING.

A naming opportunity at Peacehaven is more than a recognition – it's a way to help write the next chapter of our shared story. It celebrates the generosity, families, and friendships that have made this place possible, and plants a legacy that will grow for generations to come.

PEACEHAVEN · LET'S BE DIFFERENT TOGETHER.

Through a naming gift to the **Different Together Campaign**, you can honor someone who shaped your life, remember a loved one, or place your family's name among those who believe in a world where everyone belongs.

Each named space, from the café where friendships form, to the classrooms where discovery happens, to the terrace where our community gathers, will touch countless lives. The people who learn, work, create, heal, and celebrate in these spaces will feel the care and belief that built them.

**"Your gift ensures that Peacehaven continues to be a place where belonging takes root... where connection, opportunity, and purpose are not just shared, but abundant."**

## NAMING OPPORTUNITIES BY INVESTMENT LEVEL:

<b>\$2,500,000</b> -The Community Center	<b>\$1,000,000</b> -Event Hall -Social Lobby	<b>\$500,000</b> -Adaptive Fitness Center -Entrance Porch -Café -Back Balcony -Event Patio & Event Lawn	<b>\$250,000</b> -Parking Circle -Catering Kitchen -Creative Arts Studio -Recording Studio
<b>\$100,000</b> -Performance Stairs -Coworking Center -Administration Center -Snoezelen Sensory Room	<b>\$50,000</b> -Aquarium -Classrooms (3) -Multi-purpose Rooms (2) -Shared Conference Room -Accessible Path -Botanical Garden	<b>\$25,000</b> -PT/OT Office -Coworking Offices (4) -Administrative Office (3) -Community Room -Sensory/Wellness Room -Library/Wellness Room -Elevator	<b>\$10,000</b> -Phone Booths (2) -Printing Room -Laundry Room

Naming gifts are fully tax-deductible. All naming opportunities are subject to a formal gift agreement. Spaces available on a first-committed basis. Contact us to reserve yours or to discuss honoring a loved one.

# Floor Plan & Opportunities

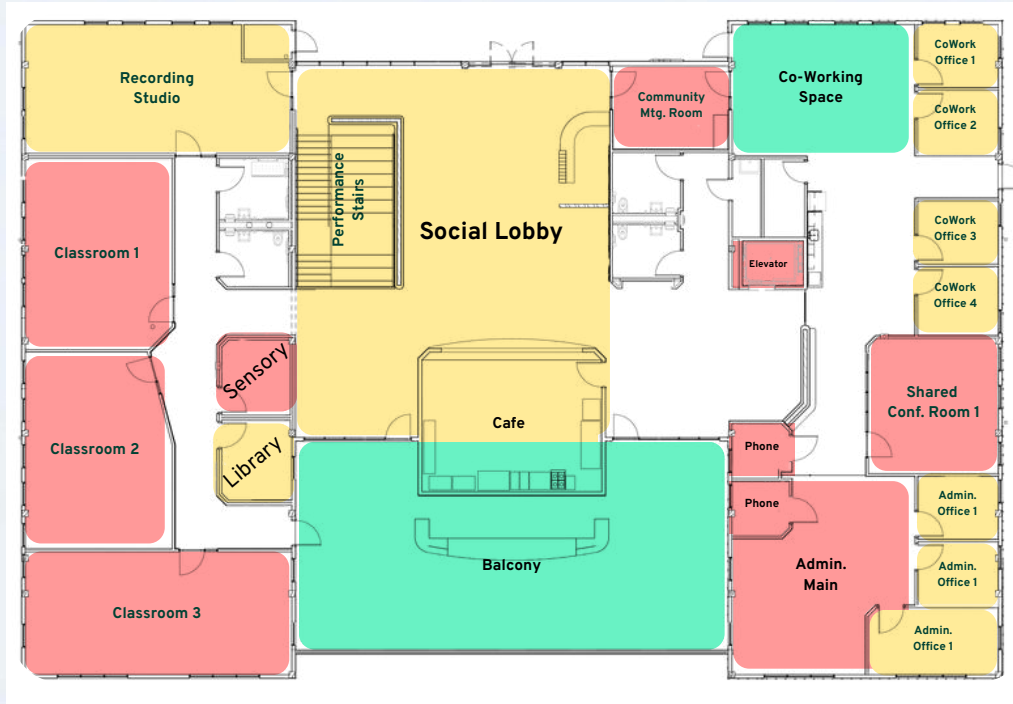
Community Center · Upper Level & Terrace Level







Named

In Conversation

Available

## UPPER LEVEL - NAMING OPPORTUNITIES

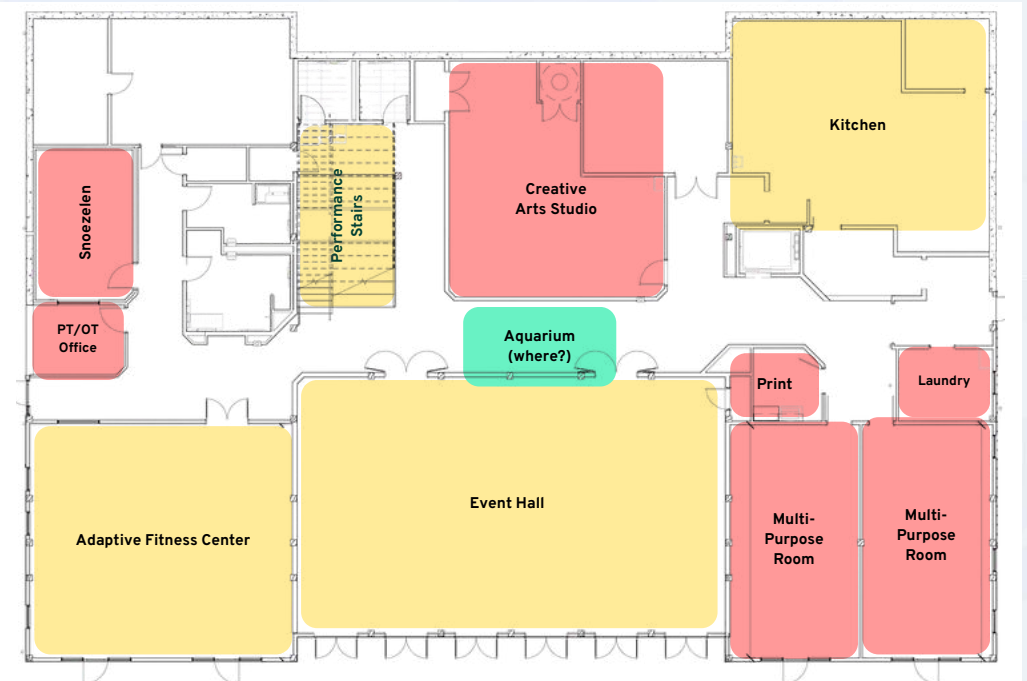


OUTSIDE SPACES	
	Parking Circle
	Front Porch
	Botanical Garden
	Accessible Trailway
	Event Patio
	Event Lawn

## TERRACE LEVEL - NAMING OPPORTUNITIES



The Community Center is our way of creating spaces and places where friendships can take root, where people of all abilities are known and valued, and where belonging grows one connection at a time.



Ready to place your family's name among those who believe in a world where everyone belongs? Let's find your space.

Phelps Sprinkle, CEO  
 phelps.sprinkle@peacehavenfarm.org  
 peacehavenfarm.org/give

# IT TAKES A COMMUNITY

## ABUNDANCE ON AND OFF THE FARM

Peacehaven is rooted in the belief that the gifts we gather are meant to be shared.

Over the past several months, our team, Members, participants, and families have continued stepping into the broader community, not simply to represent Peacehaven, but to help build a more integrated one. Whether through leadership programs like **Other Voices** and **Leadership Greensboro**, partnerships with organizations like **The Arc of Greensboro** and **Family Support Network of Central Carolina**, or the growing **RISE & SHINE** pop-up markets at **First Baptist Church**, we are continually reminded that belonging grows stronger when communities choose to show up for one another.

This spring, Doet, Leslie, and JB also traveled north to participate in the national Care Farming Network Conference, joining others from across the country who believe farms can become places of healing, purpose, work, and connection. We were even invited to take over a Greensboro Gargoyles hockey game where we were given the platform to demonstrate what it looks like to be #DifferentTogether.

At the end of any given day, people want many of the same things: to be seen, to be heard, and to be loved. Peacehaven's mission is rooted in creating spaces where that becomes more possible for everyone, regardless of ability. We are deeply grateful for the partners, churches, nonprofits, businesses, and neighbors walking alongside us as we continue building a community where people of all abilities are not only welcomed, but truly known, valued, and invited to contribute their gifts.



# TIME TO RISE

Sometimes belonging doesn't arrive with a speech. Sometimes it shows up as a feeling.

For Ashantewa, it looked like a friendly atmosphere—a place that simply felt welcoming from the start. No big announcement. Just that quiet, reassuring sense of “I can be myself here.”

And when someone feels safe enough to be themselves, something remarkable tends to happen.

They grow.

Since joining the current **RISE & SHINE** cohort, Ashantewa says, “I now see myself as a leader.”

Not someday. Not “maybe.” Now.

She also shared that she has the ability to uplift people's moods. Which, if you've spent any time at Peacehaven, you know is basically a superpower. (No cape required. Though we wouldn't be opposed.)

RISE & SHINE isn't about creating something that wasn't there. It's about uncovering what's already been quietly waiting. Confidence. Purpose. Joy that spills over onto other people.

For Ashantewa, Peacehaven is a place where she receives guidance and mentoring that meets her where she is and walks with her forward. It's a place she describes as “peaceful, safe, and happy” with an open heart and a deep sense of understanding.

This is why support for RISE & SHINE matters. When you invest in a program like this, you're not just funding activities. You're helping someone see themselves differently. You're creating space for a leader to step forward.

For joy to multiply. For a community to become more whole. Ashantewa didn't just find a program; she found a place to rise. And the beautiful part?

**She's bringing others with her.**



# SEEDS OF HOPE

*Planting Possibility. Growing Belonging.*

Spring has always been a season of faith on the farm. Seeds are planted long before the harvest appears. The work begins quietly – with trust, care, and the belief that something meaningful is growing beneath the surface.

That spirit lives at the heart of Seeds of Hope, Peacehaven’s annual spring fundraising campaign running now through June 21, the first day of summer.



While construction equipment reshapes the landscape around us, the true work of Peacehaven continues every single day in the lives of people who come here searching for connection, purpose, and belonging. Your support helps;

- someone discover confidence through supported employment.
- a family find respite and support in a complicated system.
- participants build friendships, learn new skills, share meals, create art, grow food, serve coffee, and experience the dignity of being needed and known.
- expand programs like RISE & SHINE
- create new community partnerships
- strengthen day programming and employment pathways
- prepare for expanded services reaching beyond the farm and into neighboring communities.

These gifts also provide something less visible yet equally important: the ability to plan wisely, respond thoughtfully, and grow with confidence. Reliable philanthropic support allows Peacehaven to invest in staff, strengthen programs, explore new opportunities, and continue creating meaningful places for people of all abilities to thrive.

## PLANT A SEED OF HOPE TODAY

*Use the QR code to give now or set up a recurring gift as a Peacehaven Cultivator.*



# JOHNNY'S STORY

## A SMILE THAT LIGHTS UP A COMMUNITY.

**Sometimes the clearest sign that someone has found their place is a smile.**

For Elizabeth, that's how she knows what Peacehaven means to her son, Johnny. Just mentioning the farm is enough to make his face light up. It shows up in the mornings when he gets ready for the day, in the excitement of seeing staff and friends, and in the joy he carries home after every visit.

In those moments, one thing becomes clear: Peacehaven isn't just somewhere Johnny goes. It's somewhere he belongs.

Elizabeth remembers a Thanksgiving gathering when Peacehaven CEO Phelps Sprinkle shared plans for the future Community Center and housing neighborhood with their family. As Johnny studied the drawings, he paused and asked:

"Is that where I will be living?"

It wasn't a passing comment. It was hope spoken out loud.

Through RISE, RISE & SHINE, monthly socials, and community workshops, Johnny has become a joyful presence on the farm. He loves meeting new people, helping at pop-up markets, and especially karaoke nights. Elizabeth has watched him grow more connected and confident, encouraged by staff who celebrate him for exactly who he is.

"Johnny has many people who love him," Elizabeth says, "but at Peacehaven he gets to build social bonds and familiarity that he craves."

For Elizabeth, that sense of familiarity matters deeply. After school years end, many families discover how difficult it can be to find spaces where meaningful connection continues to grow.



*Leading in the RISE garden.*



*Musical Trivia, anyone?*

Peacehaven helps fill that space.

When Elizabeth imagines the future, she sees more than buildings. She sees a community where people can live, work, contribute, and thrive. A place where families can breathe easier knowing their loved ones will have somewhere safe, welcoming, and vibrant to call home.

Because sometimes belonging looks like friendship.  
Sometimes it looks like joy.

And sometimes it sounds like someone looking at a map of the future and saying with complete certainty:

"That's where I'll be."

# BOARD SPOTLIGHT

## *Dr. Terri Shelton - A Heart for the Mission*

For Dr. Terri Shelton, Peacehaven represents more than a farm or even a program. It represents the possibility of a different kind of community; one where people of all abilities are genuinely valued for the unique strengths they share with one another.

Though Terri had known about the Farm since its early days, she says her deeper connection began through conversations with Peacehaven's leadership about a vision rooted in "inclusive excellence." What stood out most was not only the commitment to serving individuals with intellectual and developmental disabilities, but the larger dream of creating a community shaped by relationships across differences.



As a board member and volunteer, Terri has found inspiration not only in milestone moments like groundbreaking celebrations and program launches, but also in the often unseen work that brings those dreams to life. She reflects on the persistence of Peacehaven's Board, leadership team, staff, and supporters who continue turning hopeful ideas into tangible realities for families and Members alike.

When asked what belonging means to her, Terri's answer beautifully captured the spirit of Peacehaven:

**"To be accepted for who we are... to be valued for the unique ways we contribute to each other and community; to feel a deep and authentic connection to each other and to place."**

At Peacehaven, we are building a community where people are valued not despite their differences, but because of them.



*My first two weeks at Peacehaven have been nothing short of amazing! Getting to know and support the members has already been such a meaningful experience. I've loved jumping right into the joyful energy of the community, and I'm excited to spend the summer with this incredible organization!*

*Bailey Allen  
SECU Public Fellows Intern  
UNC Chapel Hill*



# HERE WE GROW: New faces on the farm



**Jacqueline Cavadi - Director of Grants & Metrics**

Jacqueline stewards the full grant process while helping measure the impact of belonging, health, growth, and community so that today's stories can become tomorrow's momentum.



**Jessica Fancourt, QP/BS - RISE & SHINE Program Supervisor**

Jessica applies her talents and energy to help adults of all abilities build confidence, skills, and meaningful connection through work, learning, and life shared in community.



**Ian Lambert - Design & Programming Intern**

Ian is helping imagine how future spaces across the farm can inspire connection, curiosity, and belonging for people of all abilities from community gathering spaces to, yes, even aquariums.

*Peacehaven continues to welcome incredible new **Direct Support Professionals** to the team. So many, in fact, that we would need to dedicate an entire newsletter to introduce them all. To celebrate their energy and compassion, we'll be introducing everyone on social media all summer, so we hope you'll follow along.*

## SPRING GREEN PESTO

### INGREDIENTS

- 2 cups fresh basil leaves, packed
- 1 cup fresh spinach or wild greens (like garlic scapes or nettles)
- ⅓ cup pine nuts, walnuts, or sunflower seeds
- 2 cloves garlic (or wild spring leeks), peeled
- ½ cup extra virgin olive oil
- ½ cup grated Parmesan cheese (or nutritional yeast for a vegan option)
- ½ tsp salt and black pepper (to taste)
- 1 lb pasta of your choice

### INSTRUCTIONS

1. Blend: In a food processor or blender, pulse the basil, spinach, nuts, and garlic until coarsely chopped.
2. Emulsify: Slowly stream in the olive oil while the processor is running to create a smooth, vibrant green sauce.
3. Season: Turn off the motor, stir in the Parmesan cheese, salt, and pepper.
4. Toss: Cook the pasta in salted water according to the package instructions. Drain (reserving ½ cup of pasta water), and toss the pasta with the pesto until fully coated.



# RISE SHINE

## BREWING COMMUNITY IN DOWNTOWN GREENSBORO



Every other Thursday, something special is brewing at First Baptist Church Greensboro.

From 10:00 AM to 1:00 PM, Peacehaven’s RISE & SHINE participants transform the space into a joyful pop-up market and coffee experience filled with conversation, connection, and purpose. Guests can enjoy handcrafted coffee drinks from RISE & SHINE Roasters, browse handmade goods and farm products, and experience the warmth and hospitality that make Peacehaven feel so unique.

But these markets are about more than coffee and shopping. They create meaningful opportunities for participants to build workplace skills, practice customer service, grow confidence, and connect with the broader community in real and lasting ways.

What started as an idea is quickly becoming a beautiful rhythm – one cup, one conversation, and one meaningful connection at a time.

## THE MERCANTILE

When you buy something from the Peacehaven Mercantile – a t-shirt, handmade Fiber Arts, a poster, even a sticker – you’re not just checking out a cart. You’re saying, “I believe in this.” In a place where people of all abilities live and learn side-by-side. In a community that makes time for one another.

Every purchase helps keep the lights on, the soil turned, and the laughter echoing across the fields. It may feel small – but around here, small things have a way of mattering most.



12

