



SHOP LOCAL SHOP HOME SHOP GUILFORD

**2023 Guilford
Holiday Gift Guide**



Welcome to the 2023 Guilford Holiday Gift Guide. We hope this guide inspires you to visit these shops and restaurants as part of Small Business Season. Our small businesses support our children with their team and school fundraisers; they support our charities by donating to silent auctions and providing change donation jars; and they build our community.

Our small businesses make Guilford a great small town! Let this guide encourage you to Shop Local, Shop Home, Shop Guilford this season and every season.



Shoreline Chamber and Town of Guilford Economic Development

Guilford Businesses

A Better You At Skinsations	35 Boston Street Suite C	Guilford, CT 06437	(203) 453-0368
Arthur Murray Dance Center Guilford	11 Water St.	Guilford, CT 06437	203-458-9000
Ballou's Restaurant & Wine Bar	51 Whitfield Street	Guilford, CT 06437	203-453-0319
Blazing Fresh Donuts	16 Church Street	Guilford, CT 06437	(203) 689-5330
Breakwater Books	81 Whitfield Street	Guilford, CT 06437	203.453.4141
Creek Chic Boutique	The Quonset Hut Shops 20c Church Street	Guilford, CT 06437	(203) 453-3111
Ella, Where She Shops...	90 Broad Street	Guilford, CT 06437	203-453-4799
Evergreen Fine Crafts	21 Boston Street	Guilford, CT 06437	(203) 453-4324
Flutterby	55 Whitfield Street	Guilford, CT 06437	(203) 458-1941
Henry Whitfield State Museum	248 Old Whitfield Street	Guilford, CT 06437	203-453-2457
J. Gresham Design	The Quonset Hut Shops 20c Church Street	Guilford, CT 06437	(202) 738-9501
LuLu's LLC	75 Whitfield Street	Guilford, CT 06437	203-453-6887
Marijane Boutique	57 Whitfield Street	Guilford, CT 06437	203-458-3933
Page Hardware & Appliance Co.	9 Boston Street	Guilford, CT 06437	(203) 453-5267
PaperScape Artwork	The Quonset Hut Shops 20c Church Street	Guilford, CT 06437	203-494-9689
RockPaperSistas'	17 Whitfield Street	Guilford, CT 06437	(203) 458-7625
South Lane Bistro	63 Whitfield St	Guilford, CT 06437	203-533-5845
Studio 317 A Holistic Salon	35 Boston St	Guilford, CT 06437	(203) 481-3100
Surrender Wellness Spa	236 Church Street	Guilford, CT 06437	203-506-9142
The Bird Nest Gallery & Salon Suites	25 Water Street	Guilford, CT 06437	(203) 689-5745
The Village Chocolatier	79 Whitfield Street	Guilford, CT 06437	203-453-5226
Tracy 2	71 Whitfield Street	Guilford, CT 06437	203-458-9100
Tracy Brent Collections	71 Whitfield Street	Guilford, CT 06437	203-458-9100
Unlimited Potential	31 Boston Street	Guilford, CT 06437	(203) 239-1966
Water Street Jewelers	61 Whitfield St	Guilford, CT 06437	(203) 444-2544



J. Gresham Design is an art glass studio and shop where we make and sell jewelry, art, and functional items for your home. We also offer fused glass workshops! We are located in The Quonset Hut Shops, just off the historic Guilford Green.



Dynamic Blue and Green Dichroic Glass Pendant



Star of David Suncatcher



Abstract Blue Pendants



Christmas Tree Ornaments



Sailing Away Charcuterie Board



Large Woodland Platter

The Quonset Hut Shops 20c Church Street Guilford, CT
www.jgreshamdesign.com

PaperScape Artworks™

Papermaking studio/artgallery



Matted 20 x 20 pressed flowers in wet cotton pulp, print. \$75.



Take Me to the River, Pulp Painting, 22 X 25 framed \$400



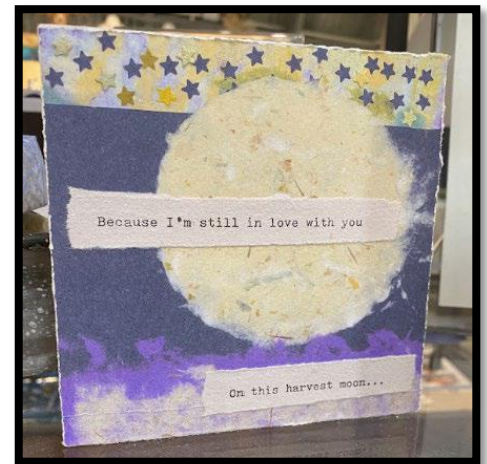
Peace Wreath \$40. add your own lights!



Indoor Harvest wreath \$75.



11 x 20, 2 panel mirror with pressed daffodil PaperScape \$225.



Song Lyric Collage Block \$30.

20 Church ST Guilford, CT | www.paperscapeartworks.com



Creekchic
BOUTIQUE

Jewelry. Clothing. Accessories.

Women's Boutique



Wonderful Scented Hand Poured
Soy Candles



Hand Knit Wool Hats & Fingerless Gloves



Cozy Oversized Heart Sweaters



Super Soft Alpaca Scarves



Fun Fabric Totes and Handbags



Handcrafted One of a Kind Belt Buckles

20c Church Street , Guilford CT | creekchic.com



Made-to-order donuts in minutes!



16 Church Street, Guilford CT | www.blazingfreshdonuts.com

Elle EST. 2005
ON THE GUILFORD GREEN

Women's clothing and accessories



velvet blouses and blazers



Coatigans - wide selection
of lightweight coats



Elegant fleeces from
Dudley Stephen



Spanx AirEssentials
(Oprah's favorite)



Versatile handbags from Hobo



Fun and flirty festive pants,
shirts and dresses.. add some
sparkle to your world

90 Broad Street, Guilford CT | www.Ellawheresheshops.com



Coastal shop featuring highly curated handmade items



All things small are beautiful. These wee vase are perfect for creating an enchanting tablescape.

Granite Salt & Pepper Shakers~ made from natural ocean and river stone.



Erin Flett~ Jen Bag with vegan leather Strap has all the feels of chic Fall/Winter



Rope woven baskets. These small vessels are perfect for your "what nots", candles or a sweet treat!

Wee Cottage and accessories~ These pottery pieces come all the way from Guilford, England! So fun to collect!



Farm+Sea Candles~Hand poured in small batches these Coconut and soy wax blend candles with cotton wicks are "the best"! All white wax infused with subtle essential oil fragrances create a beautiful glow to all setting.



17 Whitfield Street , Guilford CT | rockpapersistas.com



Come and experience an enjoyable lunch or dinner with us here at Ballou's Restaurant & Wine Bar. We have award winning "Lobsta Bisque" made Gluten Free! Our Tapas are delicious and great for sharing together. We make our food for you with love and attention to detail. Whether you want a snack or a dinner to enjoy with our Award-winning Wine Menu. We have over 50 wines by the glass and a full bar, with awesome specialty cocktails.



Gift Cards purchase on website

51 Whitfield Street, Guilford CT | www.ballouswinebar.com



Gift and Clothing Store

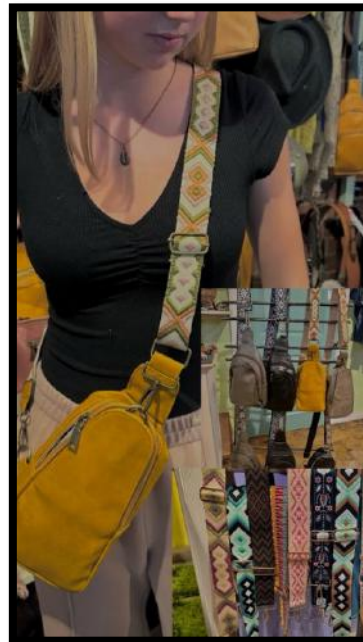
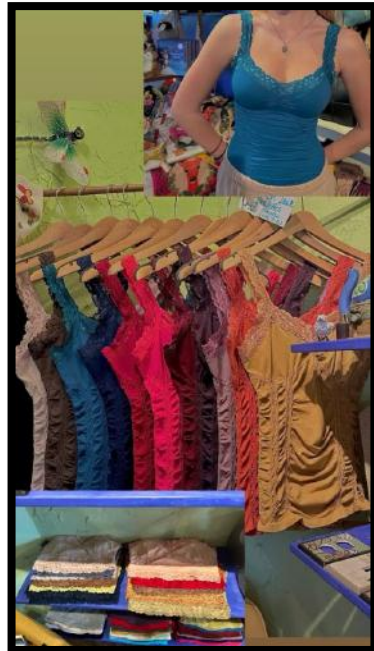


Our ceramic tree candles features a Cypress blend with a fiery woody fragrance with notes of pine needles, perfect for this holiday season!

A fan favorite! Our dragonfly wine glasses are handmade in the USA, and happen to be our signature glass!



Our best selling tank top for the past 10 years! Fitting sizes 2-12, these soft stretchy tanks work perfectly under any top, or all on their own!



Our Sling bags are one of the most popular bags, not only for style but for their practicability! With a variety of colors these bags are interchangeable with our collection of guitar straps. Made of vegan leather.



Our Blue Q socks make a wonderful gift for anyone in your life! With different funny sayings on each pair, there's sure to be a perfect fit for that someone in your life!

Our variety of clips are a great way to hold your hair up in style! All handmade in France, they are a stunning addition to any outfit!



55 Whitfield Street, Guilford CT | Flutterby-ct.com

Marijane Boutique

Marijane Boutique offers a beautiful blend of exceptional consignment featuring upscale designer handbags, clothing, accessories, jewelry and more! "NEW" things too!



Louis Vuitton
Keepall 45



Hermes Herbag



Chanel Classic Double
Flap Bag



"NEW" Oat Collective
East Coast/West Coast
Sweatshirts



"NEW" Miracle Cotton
Flag Sweater

"NEW" Dreamer's Cotton
Cashmere Sweaters



57 Whitfield Street, Guilford, CT | www.marijaneboutique.com



water street jewelers

Luxury Jewelry and Jewelry Repair



Shy Huggie Earrings 14 karat gold and diamond huggie earrings for those who love the dainty!

Custom diamond engagement rings, and Sylvie Collection engagement rings



Lola Charms, sterling silver and glass enamel handmade charms with beautiful sayings on the back.



Dainty diamond and gemstone earrings for ear curations!



14 karat and 18 karat gold necklaces and pendants for layering!

Sterling silver and turquoise Navajo and handmade jewelry.



61 Whitfield St, Guilford CT | waterstreetjewelry.com



Gift card

Inspired dinners



Fireside dining



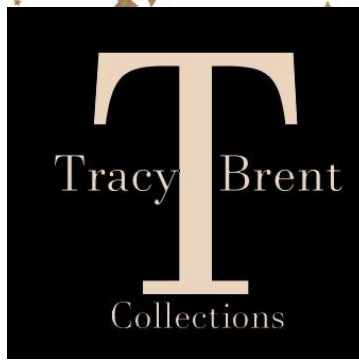
Festive location for your holiday gatherings!



Vegetarian options



63 Whitfield St., Guilford, CT | southlanebistro.com



Women's Clothing and Accessories Boutique

Orange Leather
Handbag



Nature's Collection
Long Gloves



CXC Gold & Leather
Bracelet



Kinross Cashmere
Plaited Pullover



Rib Sleeve Cashmere
Coat by Kinross



Cashmere and Silk
Ikat Print Scarf





Hiker Plaid Shacket
by Z Supply

Geo Print Knit Cardigan



Eloise wallet



Lilla P Waffle
Henley Shirt



Legend Sweater
Shirt by Flaherty

Z Supply Phoenix
Pullover



lulus

Cozy Sleep and Loungewear, Luxury Candles and Body Care, Women's Apparel and Jewelry



Barefoot
Dreams Cozy
Chic Throws



Lafco Soy Candles
in handblown glass

Petite Plume
velour Pajamas



Barefoot Dreams Robe



MerSea Cozy Cabin faux
fur earmuffs + mittens

UGG Mittens



75 Whitfield Street, Guilford Ct | lulusguilford.shop

THE VILLAGE CHOCOLATIER

Fine Chocolate and candy



Our best selling chocolate, dark chocolate nonpareils in a festive half pound bag, also available in 1 pound boxes.



A selection of our bestselling chocolates in 1/2lb, 1lb, and 2lbs.



A selection of assorted truffles in a convenient hanging box that you can pair with your favorite wine.



Grab and go stocking stuffers



Hostess gifts

79 Whitfield Street, Guilford CT | www.thevillagechocolatierguilford.com

THE SPICE & TEA EXCHANGE®



Crazy for Cocoa



Organic Catnip Toy



Party Dips



Peace, Love or Gratitude
Bhavana Tumbler



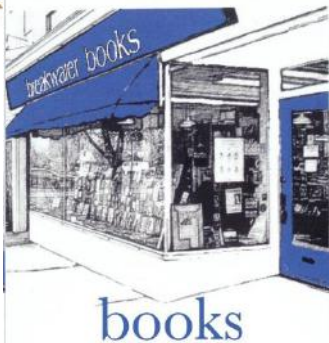
IngenuiTEA



Teas the Season

80 Whitfield, Guilford CT | spiceandtea.com

breakwater



We are an independent bookstore located on the historic Guilford Green, est. 1972. We love books and hope to help you find the perfect one!



Our nonfiction section is a customer favorite and includes many fabulous finds <https://live-breakwtr1690810609.pantheonsite.io/book/9781324065463>



The Giant Board Book with plush caterpillar is available online as well: <https://live-breakwtr1690810609.pantheonsite.io/book/9780399237720>



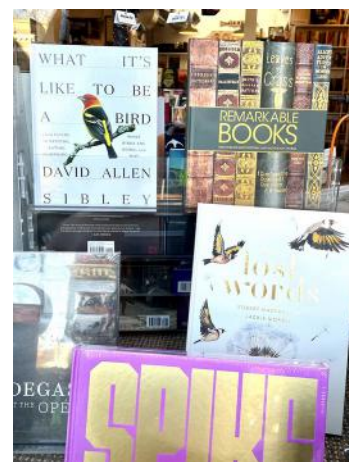
Two-time National Book Award winner Jesmyn Ward, *Let Us Descend* <https://live-breakwtr1690810609.pantheonsite.io/book/9781982104498>



Young readers love series Try Kwame Alexander's first book <https://live-breakwtr1690810609.pantheonsite.io/book/9780316441865>



Kids' nonfiction: DK Eyewitness Anthology series is. Try *The Wonders of Nature*: <https://live-breakwtr1690810609.pantheonsite.io/book/9781465485366>



Coffee table books: *Remarkable Books: The World's Most Historic and Significant Works* (DK History Changers) <https://live-breakwtr1690810609.pantheonsite.io/book/9781465463623>

81 Whitfield, Guilford CT | breakwaterbooks.net



Come and learn the most popular social dances from the ones you see on dancing with the stars to the ones you see out on the town. Lessons for Singles & Couples. No Partner or experience necessary. Don't miss a dance opportunity again!

Holiday Gift certificate

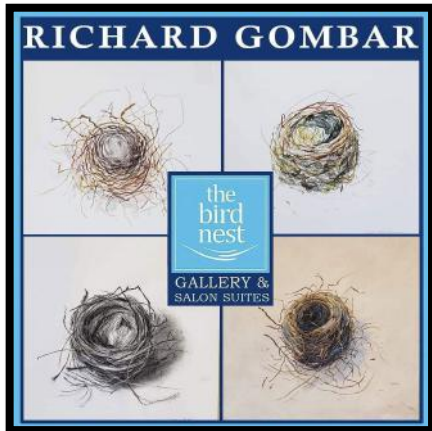


<https://arthurmurrayguilford.com/gift-certificates/>

11 Water St. Guilford CT | Amguilford.com



The Bird Nest is a Full Service Salon Suite business, and creative showcase space for local artists.
Where HAIR meets ART



Bird Nests on
Wood Panel by
Rich Gombar



"Green Monster"
by Laura Carroll-
Koch 8x10 Acrylic

"Free As A Bird" by
Stefanie Marco Lantz
Acrylic on Reclaimed
Wood / Cabinet Door



"Guilford" multi media on
wood block by
Kindspin Design



"Sunflowers" by
Brendan Loughlin

Jewelry Designs
by Crunchy Diva
Designs



25 Water Street Guilford CT | www.thebirdnestsalon.com

PAGE



Hardware & Appliance Co.

Page's has you covered for hosting, decorating your home, and gift shopping this season. Our staff is ready to help you pick out the perfect gift for everyone on your list. We also offer free gift wrapping. Use this link to see more of our curated gift selection: <https://rb.gy/0icj8>



Ornaments are always special gifts, especially those that are unique. We have a plethora of ornaments that will make lasting holiday memories for your loved ones.

Bees are all the buzz for 2024 and we are here for it. We have everything "bees" for you.



Dish towels make the perfect gifts for a party host or someone who loves decorating their kitchen for the holidays.



For the kiddos, toys are an essential part of gift giving! Come browse our collection of Legos, Hot Wheels, Barbies, and games.



For the one on your list who loves to cook, especially outdoors, check out the Gozney Pizza Dome. You can cook more than pizza in a Gozney, like wings, steak, and even cake.

We sure love our Stanleys and they make perfect gifts for anyone!



9 Boston Street, Guilford CT | www.pagehardware.com/

EVERGREEN

FINE AMERICAN CRAFTS



Evergreen is a contemporary craft shop, established in 1983. Their focus is American handmade crafts and they feature a distinctive collection of functional ceramics, wood, metal, fashion accessories, including hand bags and scarves, glass, jewelry, and so much more.



Cutting boards crafted from sustainably harvested North American hardwoods in Dorset, Vermont.

Earrings and necklaces made of 24k gold and silver plated nickel-free pewter and adorned with semi-precious stones, Swarovski crystals, and glass beads.



Alpaca hats and handwarmers. This company only works with South American Fair Trade artisans and co-ops.



Bamboo boxes with gypsum lids that are hand detailed with botanical castings and finished with four layers of metallic pigment.



Wheel thrown pottery with wood ash or slip trailing glazes. They are microwave safe, lead free and oven-proof.

Mugs hand built from stoneware clay and decorated using stamps and nontoxic glaze. They are food, microwave, and dishwasher safe.



21 Boston Street, Guilford CT | <https://evergreen-fine-crafts.square.site/>

it.

UNLIMITED
POTENTIAL

A SKINCARE STUDIO

it

Skin Care Studio offering Services and Products



90 Minute Wellness
Facial Therapy \$325

Bee 🐝 Illuminated
Moisturizer/Candle
\$40.



Lip Service Gloss to
Balm with honey 🍯
\$22



\$50 Gift Card for services
at Unlimited Potential



Bee 🐝 Aglow
Honey Facial
Serum \$46

La Selva Lemon 🍋
Facial Cleanser \$30



31 Boston Street | Guilford CT | upskincare.co

J.

4

Voted Best Spa, Facial, and Massage on the Shoreline for 2023, A Better You At Skinsations is dedicated to providing elite medical esthetic services in a welcoming and friendly environment.



Microneedling (collagen induction therapy) help minimize the signs of aging, improve the appearance of acne scars and rejuvenate skin.



Exosome facials are highly targeted applications of exosomes to the delicate and time-worn skin of your face.



Laser hair removal for both men and women utilizing the Lutronic Clarity II[®] system - indicated for the stable, long-term or permanent hair reduction on all skin types, including tanned skin.



Hollywood Spectra[®] is the Carbon Laser Peel treatment that provides a dramatic improvement to skin texture, tone and elasticity.



Clarity Laser Toning Facial results in instant rejuvenation of the face, neck, hands and décolletage as it smooths, plumps and clarifies.



ProCell[®] Microchanneling helps to improve the appearance of fine lines, hyperpigmentation, acne scarring and other skin issues by aiding in the production of new skin cells.

Studio 317

A Holistic Salon

We are a green, organic & clean air hair salon specializing in modern coloring & cutting techniques utilizing cleaner organic products. We participate in terracycle and green circle salons reducing our salon waste by 95%.



35 Boston St, Guilford CT | www.vagaro.com/studio317

Henry Whitfield State Museum, Guilford

Make a present of the past this holiday season! The Henry Whitfield State Museum gift shop features a wide variety of gifts for all ages. Proceeds from gift shop sales help support the museum and its mission to preserve the 1639 Whitfield House and the museum collection. Open 10-4 most weekdays.



Learn all about the local Stony Creek Pink granite industry – and even take a piece home with a book or paperweight. Candles made by the Scenic Route Candle Company in Branford.

Kids have been playing with these classic toys and games for centuries because they're just plain fun! No batteries required!



Traditionally burned on Christmas Eve and New Year's Eve, these genuine bayberry taper candles known for the luck they bring to the home are made by Helsher House in Manlius, New York.



An alternative to candles was made by soaking rush (tall marsh grass) in melted fat. Once set and hardened, the rush was placed in the clip of a rush light to burn. This rush light is a hand-forged reproduction that also features a candle socket.



Copied from originals on display these museum-quality redware reproductions are handcrafted by Maine potter, Kenneth Henderson.

Purchase a sign with the name of your favorite Guilford location. Designed and hand-painted by museum staff.



248 Old Whitfield Street, Guilford CT
<https://portal.ct.gov/ecd-HenryWhitfieldStateMuseum>



A small boutique spa we have Massage Therapy, Floatation sessions and Reiki. Our variety of massages include Swedish, Deep Tissue, Ashiatsu, Hot Basalt and Himalayan Salt Stone as well as Pregnancy and Post-Partum Massages.



One Hour Float Session - Relax in a perfectly warm Pharmaceutical Grade Epsom Salt Bath Solution and let your tension and stress melt away.

One Hour Himalayan Salt Stone Massage - using Warm Himalayan Salt Stones to soothe away stress and tension and promote an increased sense of well-being.



One Hour Swedish Massage and One Hour Float Package - Combine the best of both worlds with a one-hour Swedish Massage Session followed by a Float.



One Hour Swedish Massage - A Swedish massage is perfect for a first-time massage. The emphasis is on relaxation and circulation with light to medium gliding strokes.




One Hour Deep Tissue Massage - For clients that like a deeper pressure and have problem areas to work out.

One Hour Reiki - s a Japanese technique for stress reduction and relaxation that also promotes healing, leaving your Chakras (Energy Centers) balanced.



236 church street, Guilford CT | www.surrendermassagefloat.com



The one gift that fits everyone – a donation to a favorite nonprofit serving Guilford!

APK Charities Corporation
PO Box 1247
Madison, CT 06443
apkcharities.org

Guilford Art League
P.O. Box 646
Guilford, CT 06437
guilfordartleague.org

Chabad of the Shoreline
2710 Boston Post Road
Guilford, CT 06437
jewishshoreline.org

Guilford Community Fund, Inc.
PO Box 271
Guilford, CT 06437
guilfordcommunityfund.org

Christ Church
11 Park Street
Guilford, CT 06437
christchurchguilford.org

Guilford Community Television Inc. (GCTV)
725 Boston Post Road
Guilford, CT 06437
guilfordtv.org

Clifford Beers Community Care Center
41 Marne Street
Guilford, CT 06437
cliffordbeersccc.org

Guilford Fund for Education
800 Village Walk #269
Guilford, CT 06437
gffe.org

Community Dining Room
30 Harrison Ave #1
Branford, CT 06405
communitydiningroom.org

Guilford Keeping Society
PO Box 363
Guilford, CT 06437
guilfordkeepingsociety.com

Community Nursery School
262 Sachems Head Road
Guilford, CT 06437
GuilfordCNS.org

Guilford Lakes Golf Course
200 North Madison Road
Guilford, CT 06437
guilfordlakesgolf.com

Friends of the Guilford Free Library
67 Park Street
Guilford, CT 06437
guilfordfreelibrary.org

Guilford Performing Arts Festival/GreenStage Guilford
P.O. Box 345
Guilford, CT 06437
greenstageguilford.org

Guilford ABC
PO Box 140
Guilford, CT 06437
guilfordabc.org

Guilford Preservation Alliance
PO Box 199
Guilford, CT 06437
guilfordpreservation.org





The one gift that fits everyone – a donation to a favorite nonprofit serving Guilford!

Guilford Youth Mentoring
605 New England Road
Guilford, CT 06437
guilfordmentoring.org

Henry Whitfield State Museum
248 Old Whitfield Street
Guilford, CT 06437
portal.CT.gov/ECD-HenryWhitfieldStateMuseum

Hole in the Wall Consignment Shop
35 Boston Street
Guilford, CT 06437
guilfordabc.org

Limelite Project
17 Water Street
Guilford, CT 06437
thelimeliteproject.com

M J Petretto Foundation
2257 Boston Post Road Suite E
Guilford, CT 06437
mjpgfoundation.org

New Haven Middlesex Association of Realtors
2730 Boston Post Road
Guilford, CT 06437
nhmrealtors.com

North Guilford Nursery School
169 Ledge Hill Rd
Guilford, CT 06437
ngnschool.com

Paul Dostie KARE Foundation, Inc.
40 Greystone Way
Guilford, CT 06437
pauldostiekarefund.org

Saint George's Mens Group
33 Whitfield Street
Guilford, CT 06437
stgeorgemensgroup.org

SARAH Foundation
246 Goose Lane Suite 104
Guilford, CT 06437
sarahfoundation.org

Sarah Inc.
1620 Boston Post Road, Suite 200
Westbrook, CT 06498
sarah-inc.org

SongStrong
800 Village Walk
Guilford, CT 06437
songstrong.org

Sound Life Connections
116 Whitfield Street
Guilford, CT 06437
soundlifeconneCTions.org

Soundview Family YMCA
628 East Main St.
Branford, CT 06405
soundviewymca.org

The Guilford Foundation
PO Box 35
Guilford, CT 06437
guilfordfoundation.org

The Hyland House/Whitfield Historical Society
PO Box 229
Guilford, CT 06437
hylandhouse.org

Vista Life Innovations, Inc.
107 Bradley Rd
Madison, CT 06443
vistalifeinnovations.org

Women & Family Life Center
96 Fair Street
Guilford, CT 06437
womenandfamilylife.org



THE LEGACY THEATRE

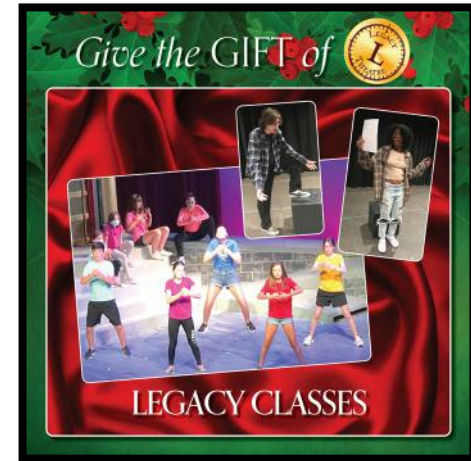


The Legacy Theatre is a professional theatre company that enhances the Connecticut Shoreline's economy, educational opportunities, and quality of life through live theatre and related programs.. Seasons include Mainstage productions, a Broadway Concert Series, shows for families and children, and so much more!

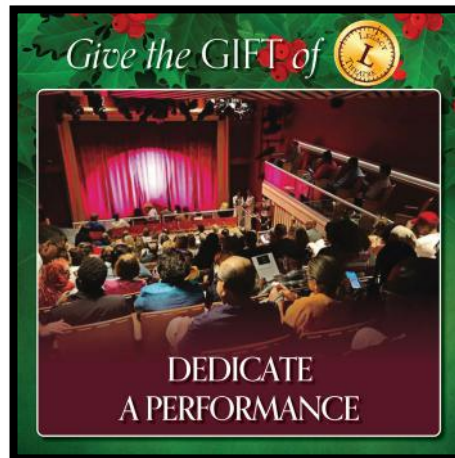


Gift Certificates - Give the gift of live theatre with a gift certificate to the Legacy Theatre! Gift certificates may be redeemed for any production, and they never expire.

Give the gift of a Legacy Theatre class or workshop -- Legacy offers educational opportunities for learners of all ages, from toddlers to adults!



Merchandise - Give that Legacy Theatre fan in your life the perfect gift this season! Sweatshirts, t-shirts, hats, totes, and golf balls are all available for purchase.



Honor someone special in your life by dedicating any upcoming performance! Dedicating a performance is truly a unique way to commemorate a birthday, anniversary, or achievement, or celebrate that special someone.



Naming Opportunities - Leave your legacy at the Legacy! Leave a lasting impact on the arts in your community by naming a seat at Legacy Theatre.

128 Thimble Islands Road, Branford, CT | www.legacytheatrect.org



Photo Credit – Ben Kuropat