

OFFICE SPACE - FOR SUBLEASE

455 6th Street NW, Winter Haven, FL 33881



5,481 SF AVAILABLE | SINGLE STORY | 24 SURFACE PARKING SPACES

CONTACTS

State Broker

MARK BETHMANN

License #: BK3494747

BellCornerstone

mbethmann@bellcornerstone.com

1-800-720-5052 | 315.579.0045

AIDAN CLEGHORN

BellCornerstone

acleghorn@bellcornerstone.com

315.565.8302

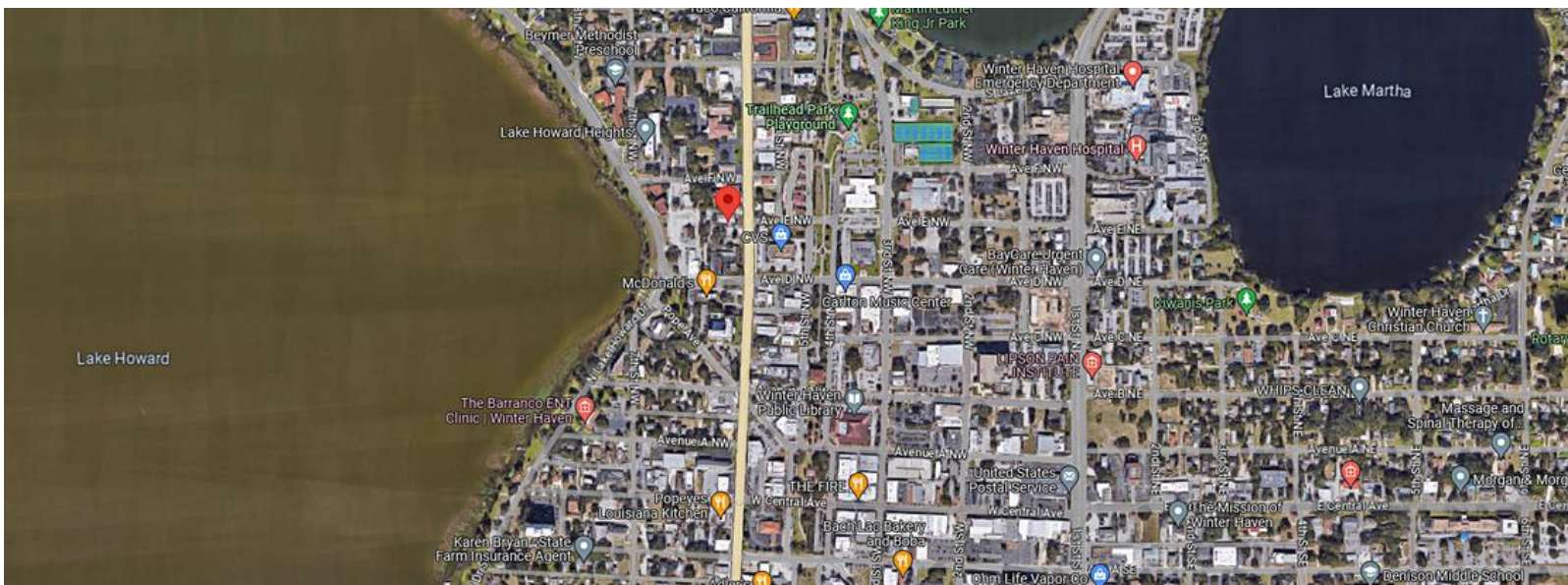
PROPERTY OVERVIEW

455 6th Street NW, Winter Haven, FL



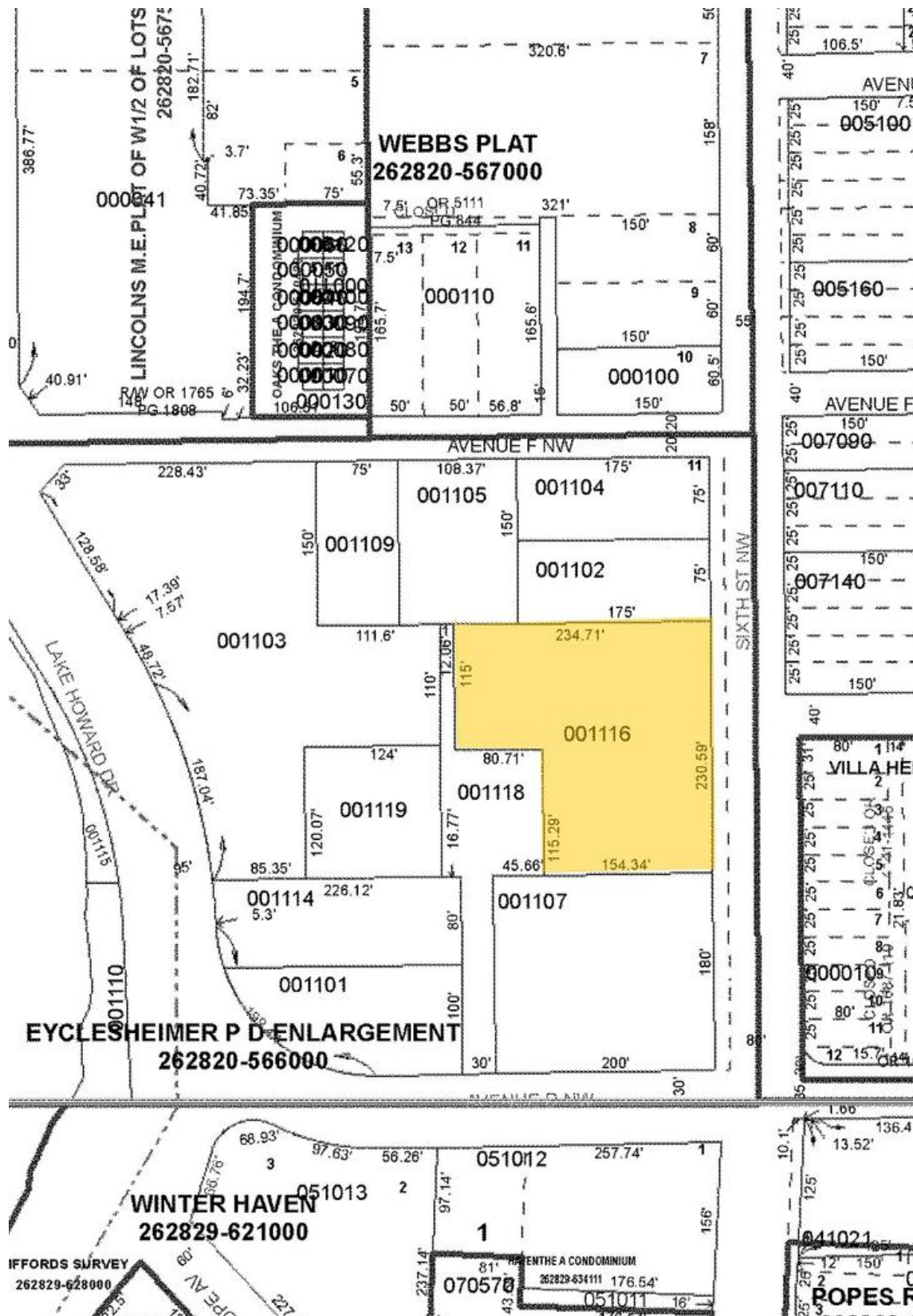
PROPERTY FEATURES

Property Type:	Office
Building Class:	Class B
Zoning:	BR
Available SF:	5,481 SF
Building Height:	1 Story
Parking:	24 Surface Parking Spaces

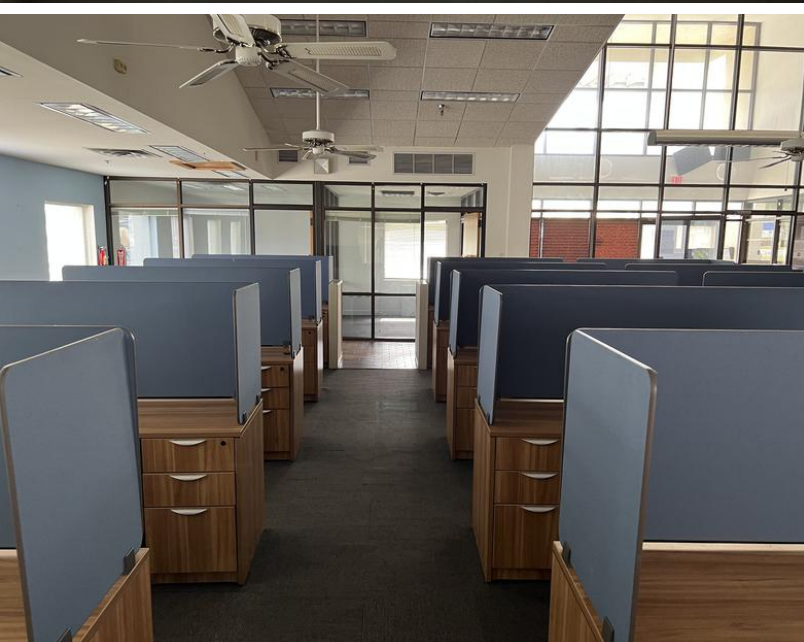
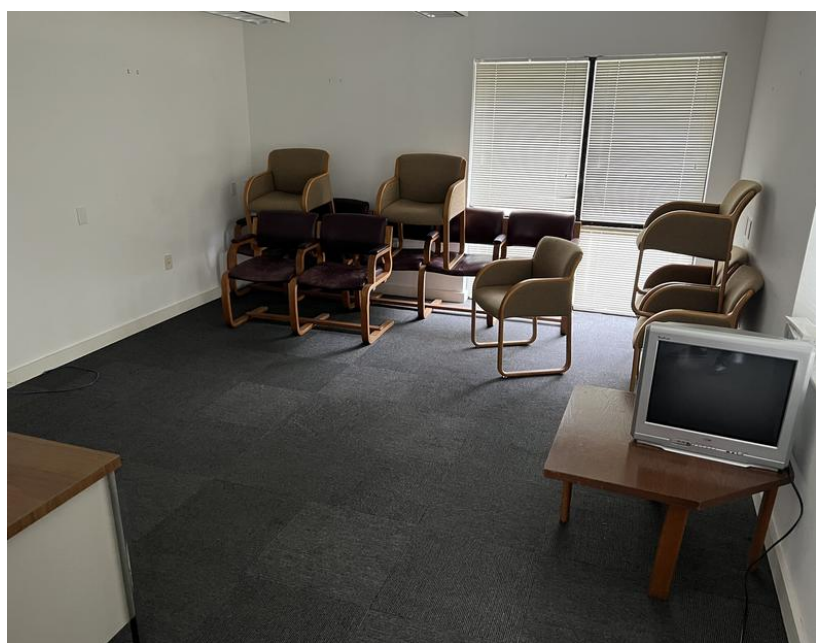


PARCEL MAP

455 6th Street NW, Winter Haven, FL









**455 6th Street NW
Winter Haven, FL**

BELLCORNERSTONE

Commercial Real Estate

FOR MORE INFORMATION:

State Broker

MARK BETHMANN

License #: BK3494747

BellCornerstone

mbethmann@bellcornerstone.com | 315.579.0045

AIDAN CLEGHORN

BellCornerstone

acleghorn@bellcornerstone.com

315.565.8302

DISCLAIMER: The information contained in this flyer has been prepared to provide summary information and to establish a preliminary level of interest in the subject property. The information contained herein is for informational purposes only and does not constitute an offer to sell, lease, or sublease, nor is it a solicitation for same.