



2023-24



Feb. 24, 2024



**Amelia Park Arena/
Hockey for Heroes**

**Celebrating 55 Years of
Boston Bruins Tradition on Ice**



OFFICIAL

Chicken Sandwich

OF THE

Boston Bruins Alumni Association


Greater Boston Area & New Hampshire

JAMES
&
WHITNEY
Co.

PROUD TO BE THE OFFICIAL
ROOFING + EXTERIORS
PARTNER OF THE
BOSTON BRUINS ALUMNI
ASSOCIATION!

SERVING
MAINE &
NEW
HAMPSHIRE!



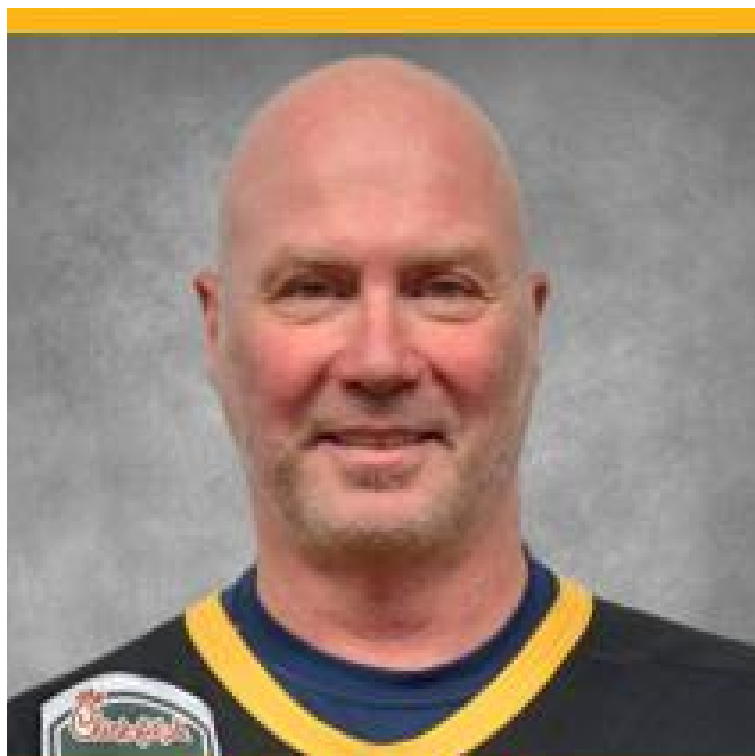
ROOFING
SIDING
DECKING +
MORE!



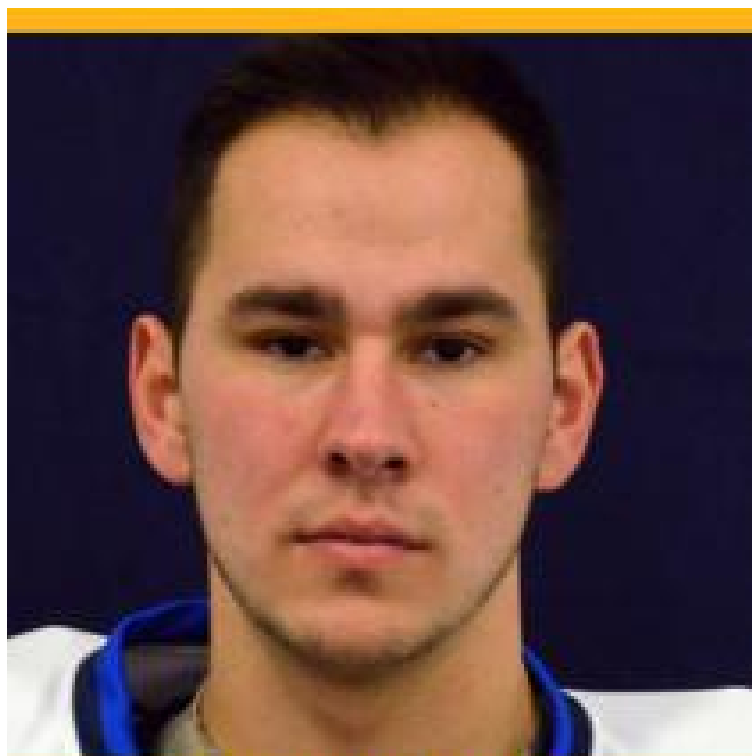
Boston Bruins Alumni Roster

	Goalie	Nick Liberto	Westfield State University & Mass State Police
#10	Forward	Kenny Hodge	4 years in NHL; 2 with Boston Bruins
#17	Forward	Tom Songin	Boston College; 3 years with Boston Bruins
#18	Forward	Mark Mowers	7 NHL seasons, 1 with Boston Bruins
#21	Defense	Frank Simonetti	4 years with Boston Bruins
#31	Forward	John Carter	8 years in NHL; 6 with Boston Bruins
#34	Defense	Dave Shaw	16 NHL seasons; 3 with Boston Bruins
#40	Defense	Bruce Shoebottom	4 NHL seasons with Boston Bruins
#40	Forward	Chris Winnes	4 NHL seasons; 3 with Boston Bruins
#55	Forward	Mike Sandford	Son of Ed Sandford
#70	Defense	Patrick Mullen	Son of Joe Mullen
	Forward	Peter Douris	11 years in NHL; 4 with Boston Bruins
	Defense	Chris Dymant	2 years with Providence Bruins
Guest Skaters		Brad Staubitz	NHL Alumni – Sharks, Wild, Ducks & Canadiens
		Doug Smith	Author & Subject of the movie "The Goon"
		Sullivan Shoebottom	Son of Bruce Shoebottom
Referee		Don Garcia	

BOSTON BRUINS ALUMNI TEAM
2023-24 season



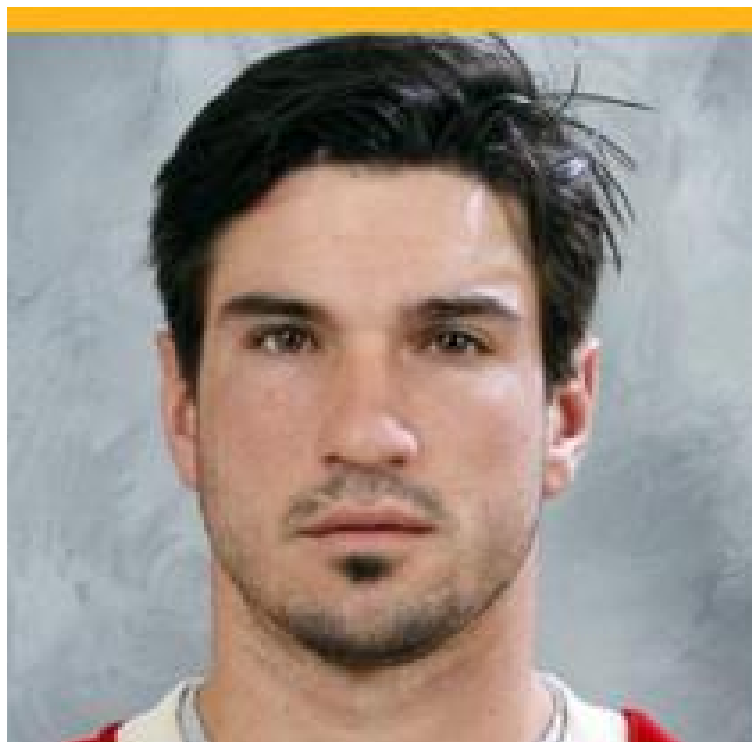
Peter Douris
1989-1993



Nick Liberto
Guest Goalie



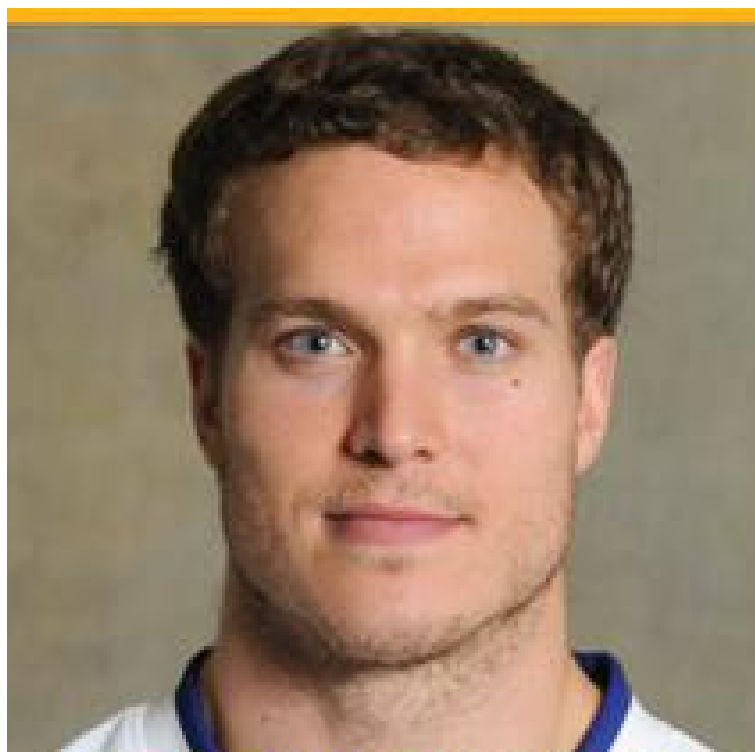
KEN HODGE, JR
1990-1992



Brad Staubitz
NHL Alumni

Boston Bruins Tradition on Ice

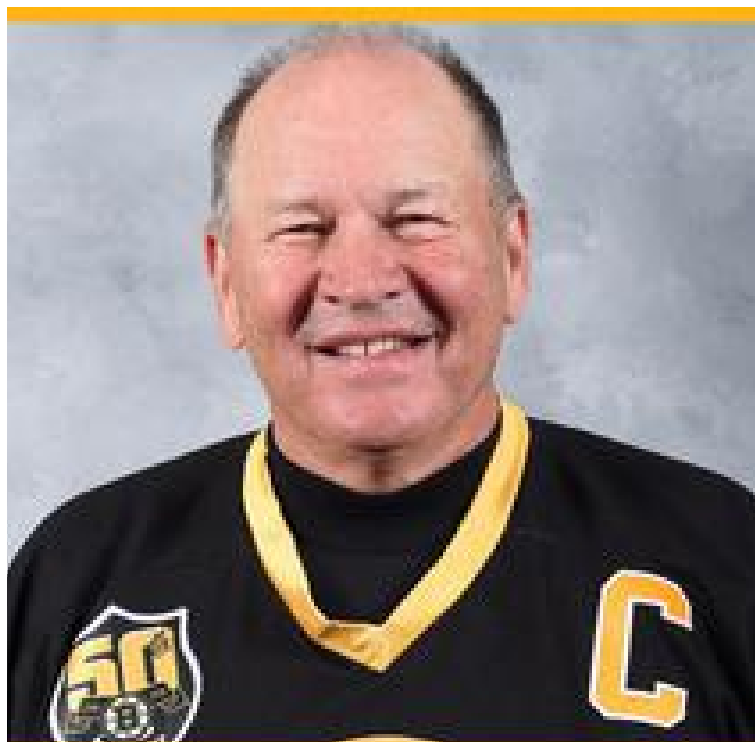
BOSTON BRUINS ALUMNI TEAM
2023-24 season



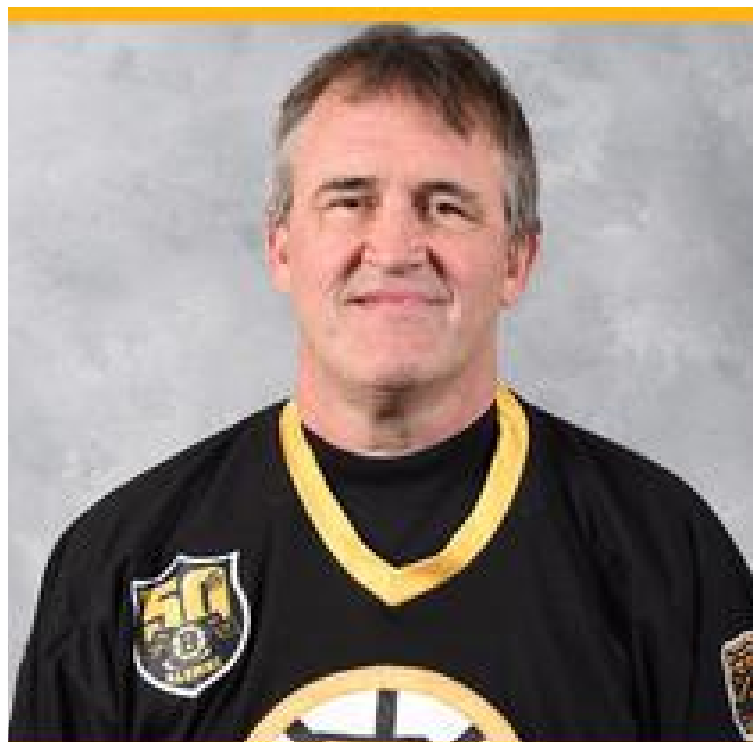
PATRICK MULLEN
Honorary Alumni



FRANK SIMONETTI
1984-1988



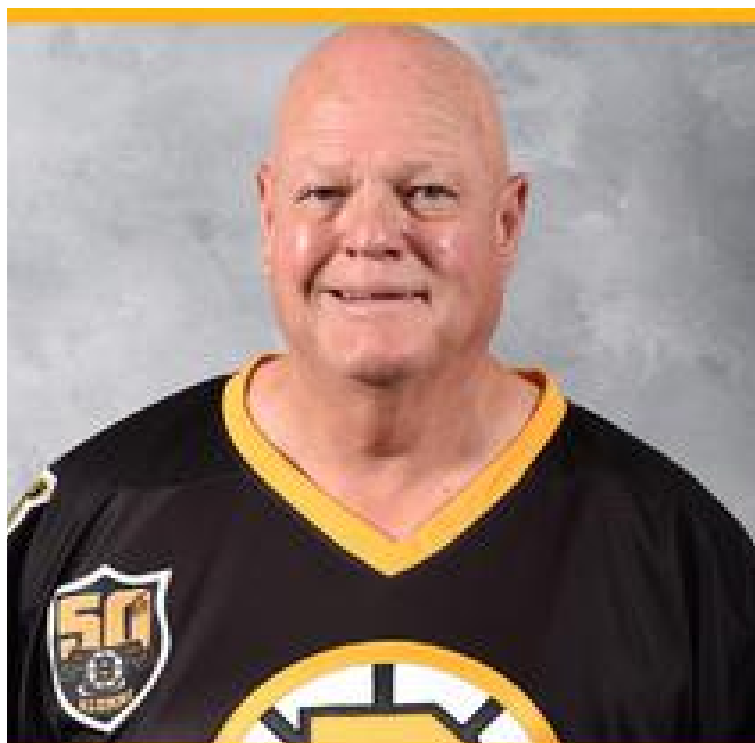
TOM SONGIN
1978-1981



BRUCE SHOEBOTTOM
1987-1991

Boston Bruins Tradition on Ice

BOSTON BRUINS ALUMNI TEAM
2023-24 season



MIKE SANDFORD
Son of Ed Sandford



DAVE SHAW
1992-1995



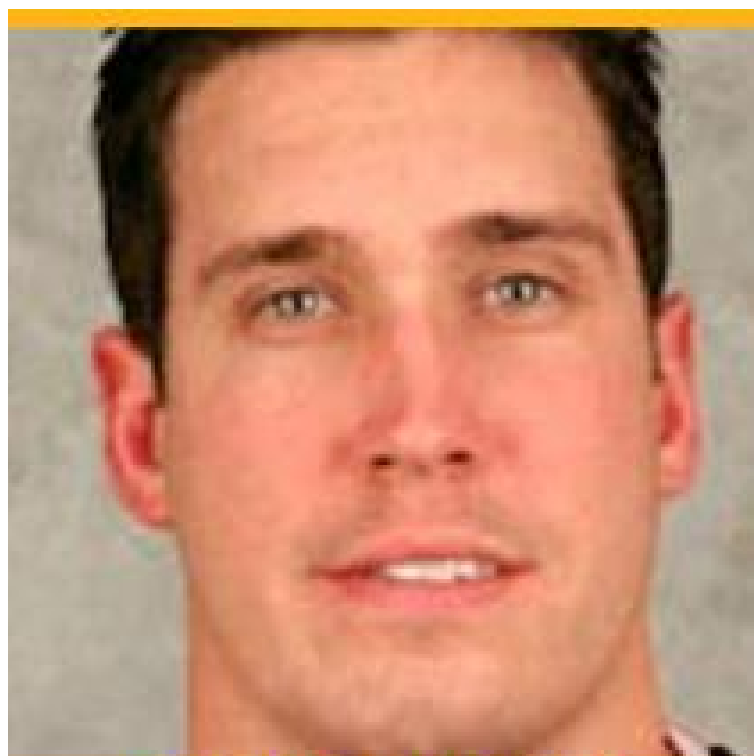
MARK MOWERS
2006-2007



CHRIS WINNES
1990-1993

Boston Bruins Tradition on Ice

BOSTON BRUINS ALUMNI TEAM
2023-24 season



CHRIS DYMENT
Providence Bruins



JOHN CARTER
1985-1991



Don Garcia
Referee



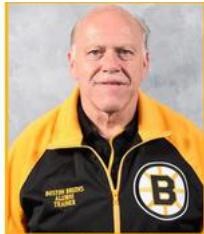
Doug Smith
Referee

Boston Bruins Tradition on Ice

BOSTON BRUINS ALUMNI TEAM 2023-2024 season



Karen Wonoski
Bruins Alumni Coordinator



Bob Cormier
Alumni Hockey Operations



John Horrigan
Alumni Game Announcer



Frank Walker
Alumni Trainer/Equipment MGR



Mike Foley
Alumni Trainer/Equipment MGR



Don Garcia
Alumni Game Referee



Maria Coan
Alumni Memorabilia Sales



Alex Bezanson
Alumni Trainer/Equipment MGR



Mark Willand
Media Director



Steve Babineau
Bruins Photographer



Craig Michaud
Alumni Photographer



Ned Costantino
Alumni Photographer

**Watch Today's Game on April 1
at BostonBruinsAlumni.com**

2023-24 Schedule

Saturday, November 4, 2023 at 4:00pm	DCU Center, Worcester, MA	Why Me & Sherry's House
Saturday, November 11, 2023 at 2:00pm	Warrior Ice Arena, Brighton, MA	Team Edna
Saturday, November 18, 2023 at 1:00pm	NESC, Marlborough, MA	Wes Tuttle Foundation
Sunday, November 19, 2023 at 2:00pm	Warrior Ice Arena, Brighton, MA	Mass. Down Syndrome Congress
Saturday, December 2, 2023 at 4:00pm	Warrior Ice Arena, Brighton, MA	Warrior for Life Fund
Sunday, December 17, 2023 at 2:00pm	Warrior Ice Arena, Brighton, MA	Matt Light Foundation
Saturday, January 6, 2024 at 4:00pm	Pop Whalen Arena, Wolfeboro, NH	Friends of Pop Whalen
Saturday, January 13, 2024 at 4:00pm	Berkshire School, Sheffield, MA	Berkshire County Special Rec. Team/WFL
Sunday, January 14, 2024 at 4:00pm	Tsongas Arena, Lowell, MA	Bridge Club of Greater Lowell
Saturday, January 20, 2024 at 2:00pm	Warrior Ice Arena, Brighton, MA	Warrior for Life Fund
Sunday, January 21, 2024 at 2:30pm	Skate 3, Tyngsboro, MA	Tom Smith Foundation
Friday, January 26, 2024 at 7:00pm	Wells Fargo Center, Philadelphia, PA	50 th Anniv. of Flyers 1974 Stanley Cup
Saturday, February 3, 2024 at 1:00pm	The Bog, Kingston, MA	Great Blizzard Special Hockey
Sunday, February 4, 2024 at 3:00pm	Everett Arena, Concord, NH	Stephen Cmar ROTC Scholarship Fund
Saturday, February 17, 2024 at 3:00pm	Walter Brown Arena, Boston, MA	Salesforce/Just Keep Livin
Saturday, February 24, 2024 at 1:00pm	Amelia Park Arena, Westfield, MA	Amelia Park Arena/Westfield Police Dept.
Sunday, February 25, 2024 at 2:30pm	Asiaf Arena, Brockton, MA	Brockton Fire Department
Saturday, March 2, 2024 at 2:00pm	The Colisée, Lewiston, ME	Lewiston Police Department
Sunday, March 10, 2024 at 2:00am	Rinks at Exeter, Exeter, NH	Spartans for Life
Saturday, March 16, 2024 at 2:00pm	Dover Ice Arena, Dover, NH	My Breast Cancer Support
Saturday, March 23, 2024 at 2:00pm	Warrior Ice Arena, Brighton, MA	Moments that Matter
Sunday, March 24, 2024 at 2:00pm	Larsen Rink, Winthrop, MA	Boston Bruins Foundation
Saturday, March 30, 2024 at 1:00pm	Veteran's Memorial Rink, Haverhill, MA	Haverhill Police Relief Association
Sunday, April 7, 2024 at 2:00pm	Warrior Ice Arena, Brighton, MA	Dana Farber Cancer Institute
Saturday, April 13, 2024 at 3:00pm	Quincy Ice Arena, Quincy, MA	Rucks2Pucks
Sunday, April 14, 2024 at 1:00pm	Danbury Ice Arena, Danbury, CT	Danbury Girls Hockey
Saturday, April 20, 2024 at 2:00pm	Warrior Ice Arena, Brighton, MA	Stanley Keg Games
Sunday, April 28, 2024 at 1:00pm	Benny Magiera Mem. Rink W. Warwick, RI	Central Rhode Island Knights Hockey

IT'S TIME FOR
YOUR BRAND TO
TAKE CENTER ICE.

DISCOVER THE PERFECT LOCATION FOR YOUR
BUSINESS WITH OVERTIME REAL ESTATE.



OVERTIME
REAL ESTATE



PAT LEAHY

PAT@OVERTIMERE.COM

@OVERTIMERELL



TD GARDEN IS PROUD TO SUPPORT THE
BOSTON BRUINS ALUMNI ASSOCIATION.



From your friends at TD Garden, proud home of the Boston Bruins.

TD GARDEN

Keep us in your sites.



Proud sponsor of the Boston Bruins: past, present and future

- Site Development
- Soil Remediation
- Earthwork

- Utility Work
- Site Improvements
- Equipment Rental

JAMES W.

FLETT

CO. INC.

EXCAVATING CONTRACTORS

800 Pleasant Street, Belmont, MA 02478 • 617-484-8500 • Fax 617-484-1279 • www.jwflett.com

YOUR TEAM, YOUR CHOICE.

We believe in building winning partnerships to protect your team for tomorrow. Whether your team is your family, business, or your employees, you can depend on Cross Insurance for the best insurance solutions.



COMMERCIAL INSURANCE PERSONAL INSURANCE EMPLOYEE BENEFITS SURETY

OFFICIAL INSURANCE BROKER



www.crossagency.com

Original Boston Garden established in 1928 Dolben established in 1929

The difference is DOLBEN

We are the Dolben Company – a dynamic real estate firm, with a family inspired culture, developing and managing best-in-class multifamily communities throughout the New England and Mid-Atlantic markets since 1929.

With our core value of stewardship, coupled with our extensive industry experience, we maximize each and every investment's potential.

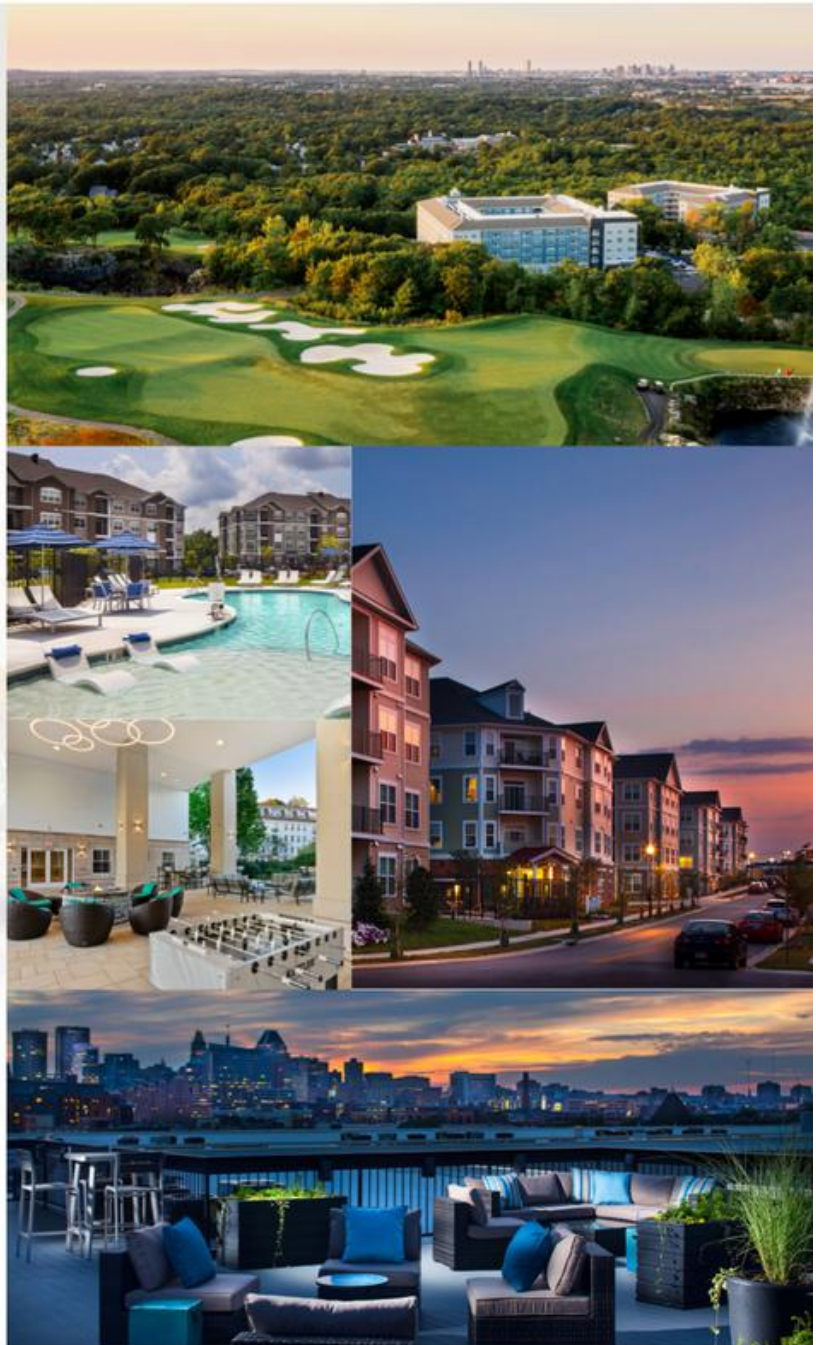
We are industry-leading experts with an innovative mindset. From site selection through construction – no development detail is too small.

We always put our residents first, working tirelessly to create communities people are proud to call home.

We are committed to fostering an inclusive and collaborative company culture that inspires personal and professional growth.

LET'S GO BRUINS!

DEVELOPMENT
MANAGEMENT
INVESTMENT



Founding Member of



150 Presidential Way, Suite 220 Woburn, MA 01801 | DOLBEN.COM



TRESCA

**Delicious Italian food
and traditional
hospitality in
Boston's North End.**

233 Hanover Street
Boston, MA 02113
p: 617-742-8240
f: 617-742-8246

info@trescanorthend.com



Multi Family

Hotels

KELLY'S

Student Housing

Turner Hill Golf Club

AAM15

Real Estate Investment & Management

David R. Masse
CEO / Founder

AAM15 Management, LLC is an independent private equity investment and management company with strong investment performance in commercial real estate spanning the East Coast of the United States.

www.aam15.com



WARRIOR ICE ARENA



"Official Practice Arena"



"Official Home Arena"





ATTENTION!

- › Carpenters
- › Electricians
- › Plumbers
- › HVAC
- › Landscapers
- › Other Contractors

Want to save money on your insurance? Talk to us.
Get a free 2nd opinion. Give us a chance...you've got nothing to lose!

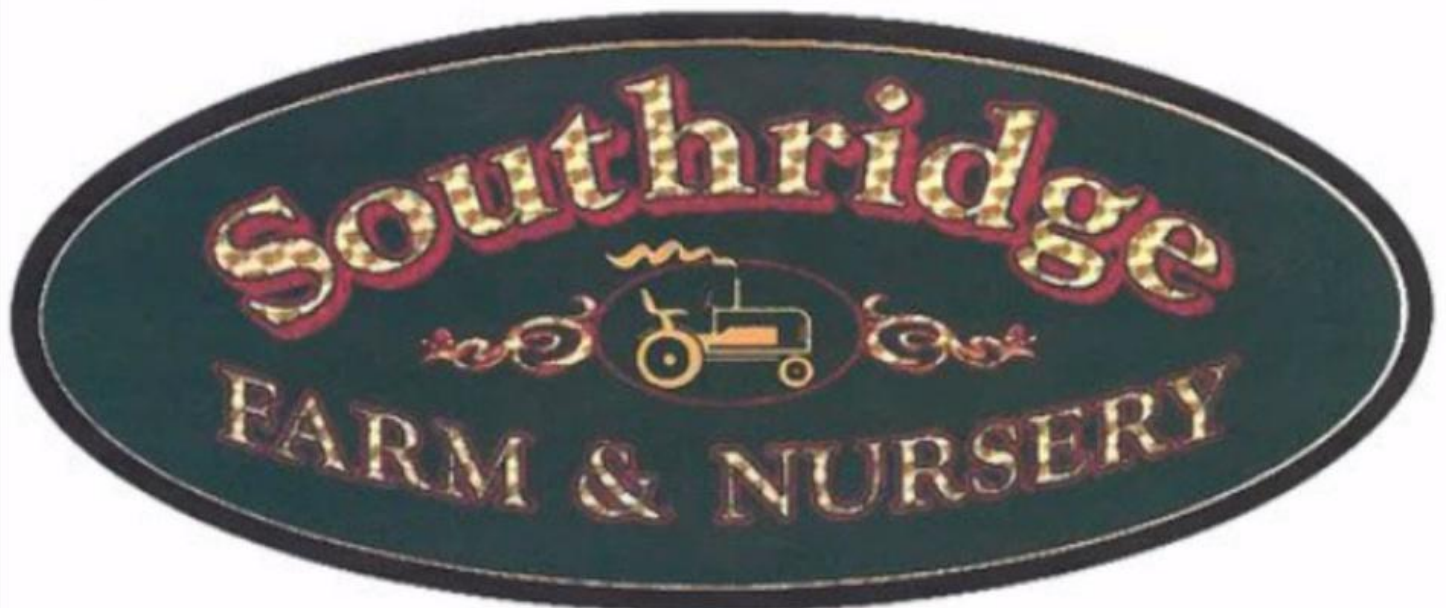
PROPERTY LIABILITY COMMERCIAL AUTO UMBRELLA EMPLOYEE BENEFITS
WORKERS' COMP BONDS EMPLOYEE BENEFITS DISABILITY LIFE



508 787 5177



businessinsurance@dfmurphy.com





Killington



LEGS®

LEGACY EQUITY GROWTH SERVICES



PJ HAYES INC.
EXCAVATING

399 SOUTH ST. WALPOLE MA 02081 | 508-668-9710



EXPERIENCE

THE POWER OF THE ATG NETWORK

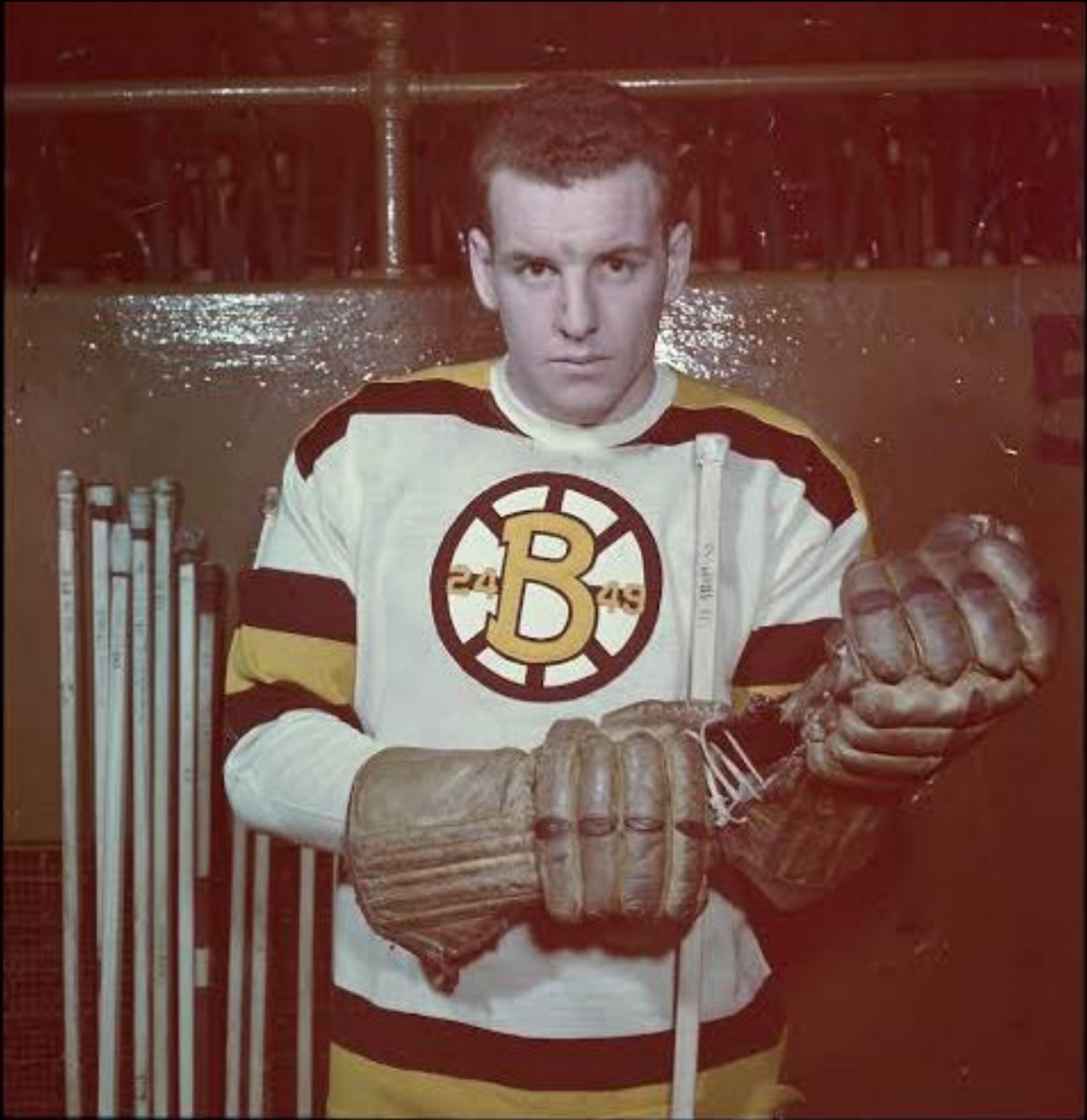


MASSACHUSETTS | NEW HAMPSHIRE | VERMONT

AdvantageTruckNE.com
877-4-ATG-HELP



*In Memory of our
Departed Friend*



**ED SANDFORD
1928-2023**