

THE **Potash**™ PRODUCER

DIGITAL MAGAZINE | A POTASHWORKS COMPANION

**2025
ISSUE 1**



PADCOM signs unprecedented Royalty Agreement with the MMF

**Water-related issues in Saskatchewan's potash mining sector
and the importance of mine water management**

Importance of compressor maintenance in the potash environment

Subscribe for free at potashworks.com



**STANDARD
MACHINE**

POWER SYSTEMS BY TIMKEN

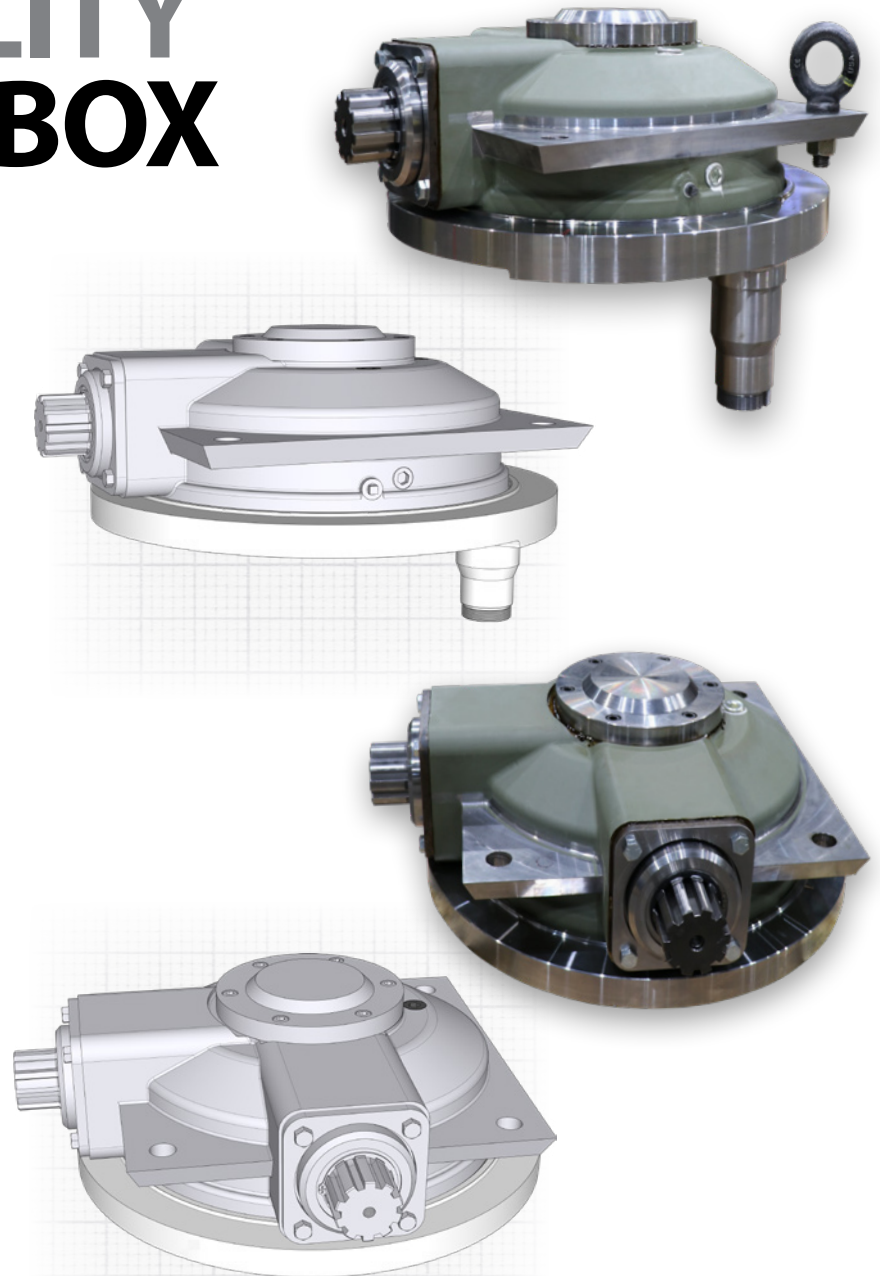
www.standardmachine.ca

HIGH QUALITY NEW GEARBOX DESIGNS

Mining Applications for Mine or Plant

Standard Machine designs and manufactures high quality gearboxes for all mining applications. From design concept to manufacture, whatever your critical equipment needs are we have the engineering experience and know how to get your equipment up and running.

The Timken Power Systems team applies their know-how to improve the reliability and performance of machinery in diverse markets worldwide. The company designs, makes and markets mechanical components, including bearings, gears and related mechanical power transmission products and services.



TIMKEN

Standard Machine 868-60 St. Saskatoon, SK S7K 8G8 Phone 306-931-3343
Inquiries - customerservice@standardmachine.ca Website - www.standardmachine.ca

Stronger. Commitment. Stronger. Value. Stronger. Worldwide. Stronger. Together. Stronger. By Design.



**COMMERCIAL
SAND BLASTING
& PAINTING**

**Serving Western
Canada since 1968**

Saskatoon, Saskatchewan

**306.931.2820
office@csbp.ca
www.csbp.ca**

Protecting Against Corrosion

Specializing in Industrial Coatings and Linings

We're ready to meet any of your protective coating and lining needs. We can work on your site or in our facilities, with large shops (**53,000 sq ft**), 30 acres of yard space, and cranes and forklifts on site.

- Protective Coatings
- Plant Maintenance
- Shop and Field Service
- Tank Lining
- Environmental Containment
- Industrial Fiberglass
- Concrete Protection
- Structural Steel
- Abrasion and Tile Lining Systems
- Shotcrete
- Spray Polyurethane Foam Insulation
- Fire Proof Coatings
- Stainless Steel Pickling and Passivation
- NACE Certified Inspectors on Staff
- Industrial Standard Quality Program
- IS Network & COR



IN THIS ISSUE

Message from the editor,
Shayna Wiwierski – **6**

Message from the Minister of Energy
and Resources, the Honourable
Colleen Young – **8**

From where I sit... Blood potash and the
gnashing of teeth – **10**

From mine. To farm. To you. – **12**

PADCOM signs unprecedented Royalty
Agreement with the MMF – **14**

Water-related issues in Saskatchewan's
potash mining sector and the importance
of mine water management – **16**

Revolutionizing mining education
with virtual reality at Saskatchewan
Polytechnic – **20**

Benefits of remote-controlled demolition
robots for potash mining – **22**

Importance of compressor maintenance
in the potash environment – **24**

Promoting safer, more productive shifts in
room and pillar mining – **26**

PDAC 2025 draws 27,353 participants
to Toronto – **29**

UBC millwrights powering
Saskatchewan's mining and
potash industry – **30**

Seeing clearly:
Why comprehensive vision care is a must
for benefits plans – **34**

Rulmeca Canada:
Premium material handling components,
proudly Canadian made – **36**

A2Z Safety & Training Ltd -
Why choose us? – **38**

THE Potash™ PRODUCER

DEL COMMUNICATIONS INC.
www.delcommunications.com

President & CEO: DAVID LANGSTAFF

Project Lead & Sales: MIC PATERSON
mic@delcommunications.com

Managing Editor: SHAYNA WIWIERSKI
shayna@delcommunications.com

Contributing Writers:

MEGAN ADAMS

JEFF KEELING

STEVE HALABURA

ANDREA HANSEN

ELIZABETH MONTGOMERY

© 2025 DEL Communications Inc.

All rights reserved. Contents may not be reproduced by
any means, in whole or in part, without the prior written
permission of the publisher.

While every effort has been made to ensure the accuracy
of the information contained in and the reliability of
the source, the publisher in no way guarantees nor
warrants the information and is not responsible for
errors, omissions or statements made by advertisers.
Opinions and recommendations made by contributors or
advertisers are not necessarily those of the publisher, its
directors, officers or employees.

DEL Communications Inc. is extremely grateful to our advertisers for their support in this publication.

CLICK HERE TO DOWNLOAD THE MEDIA KIT.

| | | | |
|---|----|---|-----|
| A2SKI Industrial..... | 19 | Nutana Machine..... | 7 |
| A2Z Safety & Training Ltd..... | 38 | Nutrien..... | 13 |
| Brokk..... | 5 | PICA..... | 6 |
| CAB Products..... | 15 | Pocono Fabricators..... | 25 |
| Comairco..... | 24 | RESPEC..... | 17 |
| Commercial Sand Blasting & Painting..... | 3 | Richwood..... | 19 |
| Continental Conveyor Ltd..... | 8 | Rulmeca..... | 37 |
| Custom Machine & Mechanical Services..... | 11 | SaskTel..... | 9 |
| GNB Global..... | 32 | SaskWater..... | 39 |
| Halabura Potash Consulting Ltd..... | 10 | Standard Machine..... | IFC |
| Komatsu..... | 27 | Sulzer Pumps (Canada) Inc..... | 7 |
| Lajcon Concrete Distributors..... | 34 | Sutton Benefits and Pension..... | 35 |
| Ludman Industries..... | 19 | The St. Lawrence Seaway Management Corporation..... | 25 |
| Millwright Regional Council..... | 31 | West River Conveyors..... | 18 |



TAKING MINING TO A NEW LEVEL

This is the natural habitat for Brokk's compact giants. With the perfect combination of power, operability and accessibility our demolition robots provide efficient solutions to increase profits.



Brokk Inc. | Monroe, WA | 1-360-794-1277 | info@brokkinc.com | www.brokk.com/us

BROKK®

MESSAGE FROM THE EDITOR Shayna Wiwierski

As we dive into the latest edition of *The Potash Producer*, there's no denying that 2025 is shaping up to be a year of significant milestones and exciting developments for the potash industry.

In this issue, we highlight a ground-breaking achievement for both the potash sector and Indigenous relations in Canada. On February 28, 2025, history was made when the National Government of the Red River Métis, the Manitoba Métis Federation (MMF), and the Potash and Agri Development Corporation of Manitoba (PADCOM) signed an unprecedented Royalty Agreement. This agreement is not just a business deal; it marks a transformative moment in recognizing the MMF as a National Government and acknowledges the inherent rights of the Red River Métis to self-determination and self-governance.

PADCOM's commitment to honouring this new relationship is a model for future collaborations between Indigenous communities and industry partners. It's a step toward a more inclusive and respectful future where economic development and Indigenous rights go hand in hand.

While we celebrate this historic agreement, we also turn our attention to the broader potash industry and its impact on global food production. Potash may not be a household name, but it's a critical component in the fertilizers that nourish the crops feeding the world. With the demand for food skyrocketing due to global population growth, the role of potash miners has never been more crucial. However, as the industry strives to meet these increasing demands, it's clear that innovation is essential.

One of the most exciting advancements we're seeing is the use of remote-controlled demolition robots. These cutting-edge machines are revolutionizing potash mining by enhancing both safety and efficiency. With their compact design and

the ability to operate remotely, these robots are enabling miners to access the deepest, narrowest veins of potash with unprecedented precision. From drilling and blasting to bolting and breaking, these robots are transforming operations. Whether it's supporting deep-vein mining or revitalizing shafts, the use of demolition robots is helping producers around the globe increase productivity and, most importantly, ensure the safety of their workers.

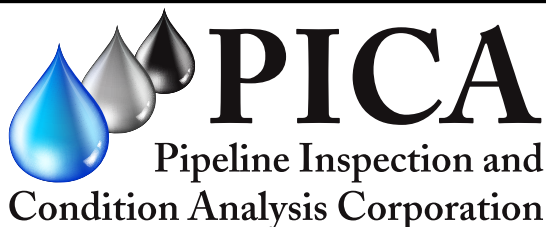
However, it's not all smooth sailing for the potash industry. The global trade environment remains challenging, and recent actions taken by President Donald Trump have raised concerns. The imposition of tariffs on Canadian potash exports to the United States could have significant consequences for the market, potentially driving up prices and creating supply chain disruptions. While the full impact of these tariffs is still unfolding, it's clear that the potash market will need to navigate these political and economic shifts carefully to maintain its vital role in global agriculture.

As we look forward to the rest of 2025, we are reminded of the resilience of the potash industry and its ability to adapt to change. From ground-breaking agreements with Indigenous communities to technological innovations that increase safety and efficiency, the industry continues to evolve and thrive. At the same time, we must remain mindful of external factors like trade policies that could shape the future of the potash market.

Thank you for reading, and we hope this issue of *The Potash Producer* offers valuable insights into the exciting developments within our industry. Stay tuned for more updates and stories in future editions and don't forget to visit us online at potashworks.com for more potash news.

Shayna Wiwierski

shayna@delcommunications.com ●



"Good Decisions start with Good Information"

PICA provides excellent information
on the condition of your pipeline assets.

www.picacorp.com 1-800-661-0127

ONTARIO
MINING Review
digital magazine



Target audience is Ontario & Quebec

**View full-screen
mode**



Pumping and mixing specialist for the fertilizer industry



Pumps are at the heart of fertilizer production, and correct equipment selection that takes into consideration hydraulic design, materials, application knowledge, duty point and maintenance regime are critical to achieving reliable long-term pumping operation and maximum plant production. As an expert in solutions for corrosive and abrasive liquids, or those with high gas content, Sulzer offers a complete range of pumps, agitators, mixers and compressors for the fertilizer industry. Our innovative products are suitable for the production of potash, phosphate and NPK compound fertilizers as well as acids and industrial chemicals.

Sulzer's global presence provides local support and expertise through a network of manufacturing facilities and service centers. Our solutions combine energy efficiency, low lifecycle costs, reduced environmental footprints and excellent reliability.

Contact us today to learn more.

Sulzer Pumps (Canada) Inc.
Phone (514) 836-3796, salah.attie@sulzer.com

www.sulzer.com

SULZER



- ⊕ **ENGINEERING**
- ⊕ **FABRICATION**
- ⊕ **MACHINING**

Delivering Project Success for the Customer



**NUTANA
MACHINE**

www.nutanamachine.com | **306-242-3822**



MESSAGE FROM THE MINISTER OF ENERGY AND RESOURCES

The Honourable Colleen Young



Saskatchewan is well known for having the food, fuel, fertilizer, and critical minerals that the world needs. This reputation is something we could not have earned without our potash industry.

We are fortunate to have the world's premier potash mining companies operating in Saskatchewan, accounting for one-third of global potash production. Their expertise and innovation continue to drive the sector forward and have cemented our province's status as the world's most stable and reliable potash producer.

Saskatchewan's potash industry is key to our province's prosperity, directly employing 6,300 people and indirectly supporting thousands more through related economic activity. It has contributed billions of dollars in royalties and taxes which help to fund

the services and programs on which Saskatchewan residents rely.

Over the past two decades, Saskatchewan potash producers have invested more than \$35 billion into mine development and expansion, ensuring steady production and job creation. Recent and ongoing investments, such as the K+S solution mine at Bethune and the BHP Group's Jansen project, show the level of long-term confidence in Saskatchewan's potash industry. In fact, BHP's Jansen project investment of an estimated \$19 billion is not only the largest in the company's history, it's also the largest investment in Saskatchewan history.

Our government understands the potash industry is a core pillar of the provincial economy and critical to global food security. That's why we have worked hard to create a stable


and competitive business environment that encourages continued investment. This approach is a key reason why, in the Fraser Institute's mining survey, mining executives from around the world have rated Saskatchewan as the top jurisdiction in Canada and the third most attractive in the world for investment. This will be the ninth time over the last decade our province has been ranked in the top three globally. Canada also earned first place in the *Mining Journal's* World Risk Report, naming our country as the lowest-risk mining region in the world.

As global food demand continues to grow, Saskatchewan is well-positioned to meet this need and strengthen its role in the global supply chain. Our potash is exported to over 70 countries, including key markets in Asia, Latin America, and Europe. As a proven agricultural powerhouse, Saskatchewan takes pride in supplying the fertilizer other countries require to reach their full agricultural potential.

We are fortunate to have abundant, high-quality reserves of a resource that is crucial to feeding the world. By conservative estimates, Saskatchewan alone could supply world demand at current levels for several hundred years.

Saskatchewan's potash industry will continue to be a cornerstone of global agriculture for many years to come. With ongoing investment, market expansion and responsible resource management, we are securing a bright future for our province. ●

Continental Bulk Handling



Storage and Reclaiming

Mechanical Conveying

Metering and Feeding

Vertical Elevating

 **continental**
CONTINENTAL CONVEYOR
www.continentalconveyor.ca

Contact us to see how we can help you convey bulk materials.
Thetford Mines, QC : 418-338-4682
Winnipeg, MB : 204-661-3321
Vancouver, BC : 604-233-2008
Napanee, ON : 613-354-3318
Edmonton, AB : 780-245-1664
New Orleans, LA : 985-290-8739

Largest network

Unlimited data | Unlimited Wi-Fi



BUSINESS WIRELESS

Stay connected with customers and employees on Saskatchewan's largest LTE and Wi-Fi networks, and access the fastest speeds on our 5G network.

- › Unlimited Canada-wide or Canada, U.S., and Mexico data usage with Business Unlimited plans*
- › Unlimited text messaging in Canada, the US, and most of the Caribbean
- › Flexible, competitive wireless plans built with your needs in mind
- › No data overage charges
- › Business Unlimited 75 Plans include 1 GB of U.S. Data
- › Free unlimited Wi-Fi

It's the wireless solution your business needs.

sasktel.com/businessvip

SaskTel

| Business Solutions |

* Data speeds are reduced to a maximum of 2 Mbps once the full-speed data amount is reached.

BLOOD POTASH AND THE GNASHING OF TEETH

By Steve Halabura, P.Geo., Halabura Potash Consulting Ltd.



From the National Post:

REGINA — Saskatchewan Premier Scott Moe says a plan by the United States to restore Russia's ability to sell fertilizer is a backchannel that funds Ukrainian death and suffering.

"This is the most disturbing action that I think we've seen from (U.S. President Donald Trump) since his election," Moe told legislators Tuesday.

"In essence, what he is doing is funding (Russian President) Vladimir Putin's regime ... and funding the death of Ukrainians."

So, Premier Moe goes to Washington. And for his efforts, gets the import tariff on potash reduced from 25 per cent to 10 per cent. This is reasonable, given the fact that potash is as critical

to the American economy as oil, meaning that America lacks sufficient supply of its own and must thus import the shortfall. But then this: reports that America siding up alongside Russia in

assisting it to expand global markets for fertilizer.

To be clear, I stand 100 per cent with the premier, in that a dollar for a Russian product is a dollar that will go toward furthering the death and subjugation of Ukrainian people.

If the premier's response strikes you as somewhat personal, here's why: some 14 per cent of Saskatchewan's people have a Ukrainian heritage, and since 2022, when Putin launched his murderous adventure in Ukraine, the province accepted hundreds of thousands of Ukrainian people fleeing oppression.

So, let's call it what it is: "blood potash".

I applaud Premier Moe's courageous statement because he could have simply let the comment pass. Call it diplomacy or appeasement. But he didn't, he came out clearly and unequivocally on the side of what is right. That is what I call a hero.

Is there a risk of opening the flood taps of bottled-up Russian capacity and the market flooded with immense amounts of material? One point to make about Russian, or Belarusian potash, perhaps one of the worst kept secrets during the past several years was that despite

HALABURA Potash Consulting Ltd.

Stephen P. Halabura M.Sc. P.Geo. FEC (Hon.) FGC

- Regional evaporite basin analysis
- Early-stage exploration program design and management
- Mineral Resource assessment (NI43-101 and JORC standards)
- Class 5 Concept and PEA study management
- Solution mining design and planning
- Economic modelling

I can help you advance your potash project!

1.306.220.7715 **steveh@conceptforge.ca**

sanctions, limitations on port access, Black Sea shipping challenges, etc., Russian (and probably Belarusian) potash was making it into western markets. The overall market has taken it into consideration.

Now that I've got that off my chest, I want to pull on your coat a bit about the unfolding global tariff war. If you recall my previous column, my opinion was that tariffs on American imports of Canadian potash, be they 10 per cent or 25 per cent, would not be too negative a drag on the Saskatchewan industry, for two main reasons: a) America is a mature market; and b) the growth in demand is into developing markets such as Asia, India, South America, and the Middle East/Africa. As of today, I have not changed my opinion.

Overall, prices have strengthened in Q1 2025, riding up to the \$305 to \$315 USD range. The industry had a profitable Q4 2024 and entered the new year showing strong share price appreciation. Demands remain strong and stable, and if the prices remain at this level, potash will be profitable due to increased sales, not due to price appreciation.

Notwithstanding the stability of the sector, most of the time when someone asks me about potash, it is from the base of fear generated by the larger tariff question. Make no mistake, we will all feel the effects of the global disruption of the world economy, but I remain confident the potash sector will weather the storm.

The following words are directed to the Saskatchewan potash service and supply sector: our industry is based upon an overabundance of security, sustainability, modernization, low-cost expansion potential, long-established trade relationships, and most important, home-grown people who are fighters to the bone, and are anything but pushovers.

If you are in the service and supply sector, here are five solid reasons why you should have confidence that things, in the end, will work out okay for you:

- 1) Saskatchewan is perfectly deployed to pivot its industry to sell product to new global customers. One of the best-kept secrets is the network of Saskatchewan trade offices set up by the Ministry of Trade and Export Development. This network allows a guy like me to sell into any market I choose, without having to do a lot of expensive legwork.
 - 2) I believe that the provincial and federal governments are aligned to focus upon increasing the east-west transportation of goods, especially bulk tonnage commodities such as potash. Over the next three to five years we will see significant investments by our governments to increase transportation capacity.
 - 3) While there are government incentives to encourage the expansion of production capacity, incentives that encourage innovation, optimization, and more efficient production would
- 4) There are buyers who seek their own supply of potash, and these groups should be encouraged to invest in the province. It's not important who produces if new mines provide jobs, services, and royalties to the provincial coffers. Saskatchewan should more aggressively solicit such investments through targeted investment credits.
 - 5) For those in the service and supply sector: the government should encourage you to hang in by offering a tax credit that incentivizes small to medium businesses to keep their people employed. It's time for the service and supply people to get a break.

I plan to pay a visit to Regina, so if you have anything you'd like me to add to the wish list, or if you want to join me, reach out to *The Potash Producer's* publisher, Mic Patterson, and he will connect us.

Nuff said... ●



CUSTOM MACHINE AND MECHANICAL SERVICES LTD.



SERVICES OFFERED IN-HOUSE:

- Engineering; Machining; Welding; Mechanical
- Gear and spline cutting
- CNC Milling, Turning, Grinding
- Gear drive re-builds

ON-SITE SERVICES:

- Survey, inspection & Alignment for Two pier or Multi Pier rotary equipment
- Onsite resurfacing of Dryer Trunnions and Tires
- Hard Turning; Precision Machining of various Mill Rolls on site

Rotary Kiln and Dryer Alignment, Service and Parts

www.custommachine.ca



FROM MINE. TO FARM. TO YOU.

Together with farmers, Nutrien is building a resilient agricultural future by enhancing productivity and innovation worldwide

By Megan Adams

Nutrien produces and distributes approximately 26 million tonnes of potash, nitrogen, and phosphate products for agricultural, industrial, and feed customers.

Nutrien is the largest potash producer in the world, where the journey begins deep underground at our six low-cost, flexible mine networks in Saskatchewan. With access to some of the best potash-rich geologies in the world, we play a crucial role in delivering essential nutrients that empower farmers to increase yields and productivity.

Nutrien is a major global player in nitrogen production, standing as the third-largest producer in the world. In Canada, six of our strategically located facilities are in Alberta, forming a robust network producing ammonia and other nitrogen-based fertilizers crucial for agriculture and industry.

As the world's largest supplier of essential crop nutrients, Nutrien stands as a trusted partner to farmers throughout every season. Our extensive global supply chain guarantees timely access to the highest quality products and exceptional customer support. Through our commitment to operational excellence, we strive to create a lasting positive impact for future generations, providing reliable crop nutrients that support farmers.

With local roots in Saskatchewan, Nutrien has expanded globally, with over 1,900 retail locations across seven countries. Driven by our workforce of 25,500 employees, our focus on collaboration and innovation enables farmers to achieve higher yields, aligning with our shared purpose of feeding a growing global population.

In Canada, we are committed to empowering farmers and bolstering our communities through our extensive workforce and operations.

Our team is critical to maintaining a leading position in global potash and nitrogen production while predominantly sourcing from Canadian suppliers, which fortifies our local economy. We remain deeply involved with numerous charities and non-profits, driven by our employees' dedication to volunteering in the communities that they live and work in.

In Saskatchewan, as the largest private sector employer, we are proud of our deep community roots, with families tied to the region working across our six potash mines and corporate headquarters. This underscores the significant impact our industry has on local lives and the economy. Our commitment to community betterment is reflected in robust partnerships and substantial volunteer efforts with various organizations.

In Alberta, our dedicated workforce is essential for safely and efficiently running our Nitrogen facilities,



collaborating with local communities to foster growth. Our operations, supported by local suppliers, continue to promote regional economic benefits and safety enhancements, strengthening the resilience and prosperity of our community partners.

FEEDING THE FUTURE

Our purpose transcends into the future, marked by growth, innovation, and fostering vital

relationships. We're here for the long haul, committed to nurturing resilient agricultural systems and enhancing the well-being of our communities. Nutrien stands ready to tackle global challenges and ensure food security for generations to come.

To learn more about how Nutrien is Feeding the Future and providing career opportunities, visit our website at nutrien.com/future or explore career options at jobs.nutrien.com. ●



Nutrien

Learn More

FROM MINE. TO FARM. TO YOU.

PADCOM SIGNS UNPRECEDENTED ROYALTY AGREEMENT WITH THE MMF: RECOGNIZING THE NATIONAL GOVERNMENT OF THE RED RIVER METIS



On February 28, the MMF and PADCOM signed an unprecedented Royalty Agreement, ensuring royalty payments will be made from PADCOM directly to the MMF, with the MMF having full discretion of the funds received.

extraction of resources is taking place on our homeland, and this agreement signifies a joint commitment to acknowledging the historical significance of Red River Métis rights, land, and continue amplifying our voice as the National Government of the Red River Métis in the decision-making process,” said David Chartrand, MMF president.

Traditionally, mining companies and Indigenous groups will come to agreements based on the potential infringement of Section 35 rights. The agreement between the MMF and PADCOM acts as a proactive response, bringing Red River Métis recognition and interests to the forefront of conversations.

This unique agreement is independent from the province, ensuring royalty payments will be made from PADCOM directly to the MMF, with the MMF having full discretion of the funds received. The royalties generated by the project will be allocated towards supporting key initiatives and services for Red River Métis citizens, as well as driving economic development in the region.

“With the state of the world, we need

History was made on February 28, 2025 when the National Government of the Red River Métis, the Manitoba Métis Federation (MMF), and Potash and Agri Development Corporation of Manitoba (PADCOM) signed an unprecedented Royalty Agreement.

The agreement showcases PADCOM’s commitment to honouring and respecting the MMF as a National Government, as well as our inherent rights as Red River Métis to self-determination and self-governance.

“There is a direct relationship between the Manitoba Métis Federation and PADCOM. The

This unique agreement is independent from the province, ensuring royalty payments will be made from PADCOM directly to the MMF, with the MMF having full discretion of the funds received.

to focus on protecting our homeland and one of the key ingredients for this is working with leading environmentally conscious companies like PADCOM,” said Chartrand.

“As a government, we have fought to protect Red River Métis interests during these trying times and this new Royalty Agreement ensures our lands and rights as a Nation are protected. This is a game changer for our people.”

PADCOM president Daymon Guillas acknowledged the significance of this historic mining deal.

“We are excited to be part of this historic event,” said Daymon Guillas, PADCOM president. “The National Government of the Red River Métis has taken all the leadership in creating this unprecedented, but logical and important step. It complements our hope to be part of better solutions for relationships with the Red River Métis in the mining industry and represents our ongoing commitment towards the right relationships between business and governments, and between mining and Indigenous peoples.”

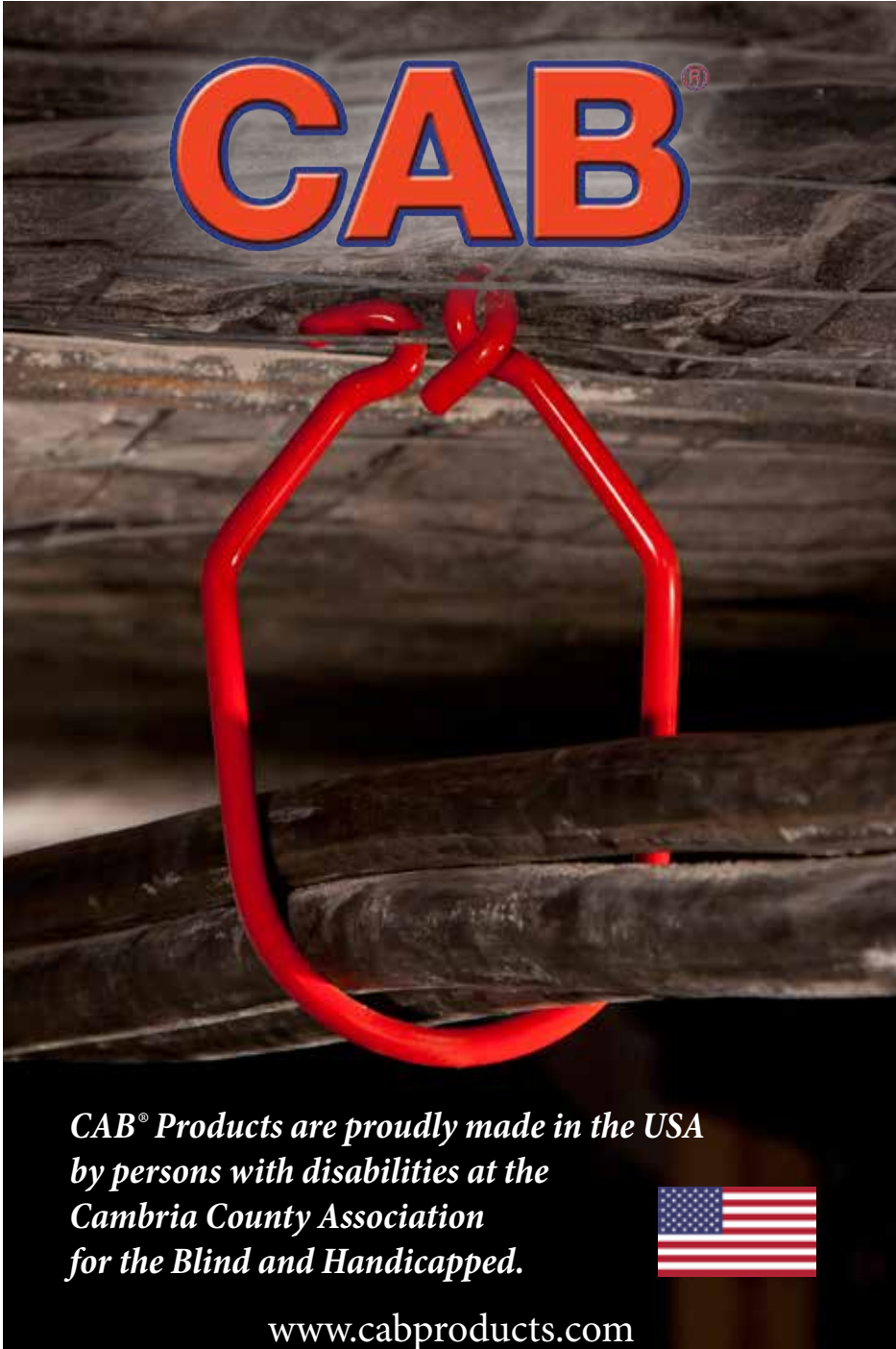
PADCOM operates Manitoba’s first-ever selective solution potash mine in Harrowby, about 16 kilometres west of Russell, Man. PADCOM owns and operates the project and has been granted the right by the Province of Manitoba to explore for, mine, work, recover, procure, remove, and sell potash, a critical mineral, derived by the project.

Due to the nature of the agreement and the efforts in environmental stewardship displayed by PADCOM, a pathway has been paved for potential future partnerships and investment opportunities.

“PADCOM has set a new standard for the mining industry and their relationship with the Red River Métis,” said Vincent Mark Parenteau, MMF minister of mining. “This agreement with PADCOM marks a key deliverable under my mandate to explore and build partnerships in the mining sector.”

The MMF encourages companies in the mining industry to follow the lead of PADCOM by placing a strong emphasis on environmental stewardship and Indigenous governance.

Visit mmf.mb.ca to stay up to date on all related Red River Métis news. ●

The advertisement features a large, red, 3D metal loop, resembling a paperclip, set against a dark, textured background of what appears to be a rock surface. Above the loop, the letters "CAB" are prominently displayed in a bold, red, sans-serif font with a blue outline and a registered trademark symbol. Below the loop, the text "CAB® Products are proudly made in the USA by persons with disabilities at the Cambria County Association for the Blind and Handicapped." is written in a white, serif font. To the right of this text is a small American flag. At the bottom of the advertisement, the website "www.cabproducts.com" is listed in a white, sans-serif font.

**CAB® Products are proudly made in the USA
by persons with disabilities at the
Cambria County Association
for the Blind and Handicapped.**

www.cabproducts.com



WATER-RELATED ISSUES IN SASKATCHEWAN'S POTASH MINING SECTOR AND THE IMPORTANCE OF MINE WATER MANAGEMENT

Underground potash mining requires controlling water inflows, as excessive seepage can threaten mine stability, equipment, and production.

THE GROWING CHALLENGE OF WATER MANAGEMENT

Increasing water demands and the impacts of climate change are intensifying pressure on water resources, making responsible and sustainable water management a top priority. Whether using conventional underground mining or solution mining, operators must overcome complex environmental, hydrogeological, and hydrological conditions while balancing efficiency, regulatory requirements, and environmental responsibility.

Earning or maintaining a Social License to Operate (SLO) requires mine operators to move beyond reactive solutions and adopt a proactive, systematic approach. Effective water

management strategies, driven by data and continuous monitoring, are key to building more resilient operations. In potash production, smart solutions help mitigate unexpected inflows, optimize brine management, and reduce land use and biodiversity impacts.

MANAGING WATER IN CONVENTIONAL AND SOLUTION MINING

Potash deposits, found in evaporite formations, are often overlain by multiple water-bearing geological units. Legacy artifacts associated with subsidence at potash mines lead to surface deformations extending beyond mine boundaries and may impact land use and biodiversity. Whether

traditional or solution-based, mining operations have complex water issues that can cause serious problems if not managed well.

CONVENTIONAL MINING: CONTROLLING WATER INFLOWS

Underground potash mining requires controlling water inflows, as excessive seepage can threaten mine stability, equipment, and production. The most significant risks come from overlying permeable formations, underlying carbonate aquifers, and mining-induced fractures. A thorough understanding of hydrogeology and structural geology in these water-bearing zones is essential for predicting and mitigating water-related issues. By monitoring and analyzing groundwater flows, water chemistry, isotopic composition, and structural geology, operators can track water movement and contamination risks, which allows for targeted mitigation.

SOLUTION MINING: MANAGING WATER QUALITY AND EFFICIENCY

Solution mining involves injecting heated freshwater or recycled brine into the ore body to dissolve potash, which

produces a potassium-rich brine which is then pumped to the surface for processing. This highly effective method requires precise water management to optimize extraction and reduce environmental risks.

Maintaining brine circulation, preventing contamination of surrounding aquifers, and reducing freshwater consumption are all critical concerns. Advanced monitoring tools now allow real-time tracking of brine composition, enabling operators to adjust injection rates and maximize potash recovery while limiting environmental impact.

TURNING WATER MANAGEMENT INTO AN ADVANTAGE

Water management in potash mining used to be reactive, but today's industry leaders are adopting data-driven, predictive strategies, turning water management into a competitive advantage.

Real-time monitoring and predictive analytics. Using predictive modeling, operators can detect inflows early, assess contamination risks in real-time, and optimize water management strategies for improved efficiency and sustainability.



**MORE THAN A DROP
IN THE BUCKET—
TOTAL WATER CONTROL**

Water is essential to mining—until it becomes a problem. Too much causes flooding, too little halts production, and contamination risks lead to fines and shutdowns.

RESPEC helps mines take control with proactive, sustainable water management solutions. Our strategies predict, manage, and optimize water use to keep your site compliant, efficient, and future-ready.

Mine Water Management Services // ***respec.com***

How prepared is your operation for the future of water management? The cost of unplanned shutdowns can reach millions of dollars in lost production and remediation.

Integrated modeling and risk assessment. Accurately predicting water movement within a mine is key to long-term planning. Integrating various models helps create an adaptive water management strategy to address operational issues and minimize surface impacts.

Water treatment and reuse. Flexible water treatment strategies should adapt from operation through post-closure. Integrated modeling helps recycle mine water, reduce freshwater use, minimize environmental impact, and support sustainable mining throughout the mine's life cycle.

THE BOTTOM LINE: THE FUTURE OF MINING IS SMARTER WATER MANAGEMENT

How prepared is your operation for the future of water management? The cost of unplanned shutdowns can reach millions of dollars in lost production and remediation. The next generation of potash mining will be defined by

how well operations manage water resources. Whether preventing costly inflows in underground mining or maximizing brine efficiency in solution mining, operators need a trusted partner with the expertise to bridge hydrogeology, engineering, and environmental science.

RESPEC's Mine Water Management team can help you develop smarter, more adaptable water strategies to keep your mine running at peak performance. Our data-driven solutions help predict and manage water inflows, extend mine life, and enhance efficiency and sustainability, ensuring smooth operations while avoiding disruptions.

To learn more about RESPEC's mine water solutions, contact: Tabetha Stirrett, vice-president of mining and energy: tabetha.stirrett@respec.com.

Mario Bianchin, director of mine water management: mario.bianchin@respec.com. ●

Seeking a haul truck alternative?

INCREASE YOUR PRODUCTIVITY WITH MADE-TO-ORDER CUSTOMIZABLE CONVEYOR SYSTEMS

West River has what your operation needs:

- ✓ Effective, affordable, highly reliable conveyor equipment
- ✓ Quality components and structure
- ✓ Ability to lower your operating costs
- ✓ Friendlier environmental options
- ✓ Surface and underground structure and idlers

Contact us today for more information on material handling solutions for potash operations.



Adjustable Free Standing Discharge Chute



Fixed Stacker with Safety Skirting



Rigid Rail Conveyor Structure Single Beam Design



Control dust and spillage.

For over 40 years, the largest mining companies in the world have put their confidence in Richwood's innovative material handling solutions.

When it comes to solving problems with dust and material containment, Richwood achieves success with engineered passive dust containment systems. Application-specific solutions optimize efficiency through sealed and protected load zones without the need for vacuums, filters or other additional equipment. The reduced wear and tear on equipment and controlled dust and spillage create a safer and more productive work environment. Worry free load zones are designed and built by Richwood every day.

What would it mean for your productivity if dust and spillage issues were eliminated? Contact Richwood today for a review of your application.

Rely on Richwood!



before and after installation

richwood.com

+1 (304) 525-5436

Located in Huntington, WV USA



**PROUDLY 100%
INDIGENOUS-OWNED**

- A trusted provider of heavy equipment for sale, lease, or rent
- Operator services available to support your project needs
- Serving Saskatchewan's mining, construction, and industrial sectors
 - Backed by the strength of A2SKI Industrial and the Peter Ballantyne Group of Companies
- Reliable service, responsive support, and a commitment to safety and performance

**Partner with ASENESKAK –
Empowering Projects. Enriching Communities.**



Kevin Reed
306-912-5623 kreed@pbgoc.com

FERTILIZER COMPACTION LEADING TECHNOLOGIES

Delivering Ruggedness and Reliability



Do you wish you could solve frequent problems with simple solutions? Our goal is to help our customers achieve better results and lower total cost of ownership.

We are offering you opportunities to increase performance & reduce maintenance with:

- Roll Synchronization
- Bearing Technologies
- Air and Dust Removal
- Roll Design and Hardness
- Upgraded controls
- Application-Tailored Seals
- Easy Roll Removal
- Standalone Roll-Cooling

Why wait? Call now!
+1 (414) 431-3500
Learn more at ludman.net

Ludman Industries
4810 N 124th Street
Milwaukee, WI 53225



Sizing Up Results.



With VR technology, students can access remote, underground or otherwise inaccessible locations, broadening their exposure to diverse mining conditions.

REVOLUTIONIZING MINING EDUCATION WITH VIRTUAL REALITY AT SASKATCHEWAN POLYTECHNIC

With a grant from the International Minerals Innovation Institute (IMII) received in 2023, Saskatchewan Polytechnic has built a virtual mine lab for the Mining Engineering Technology program to enhance student and industry learning. The \$102,000 grant helped Sask Polytech develop the software for virtual reality (VR) headsets, providing students with immersive, hands-on learning experiences.

“Due to the remote locations of many Saskatchewan mines, it’s not easy for our students to be onsite for practical learning experiences,” explains Kunle Adelakun, Mining Engineering Technology instructor. “The virtual mine lab at Sask Polytech is designed to replicate the complexities of a real mining site without leaving campus.”

Sask Polytech’s virtual lab includes a library of virtual hard rock and soft rock mines for students to

experience during their studies. With VR technology, students can access remote, underground or otherwise inaccessible locations, broadening their exposure to diverse mining conditions. Realistic scenarios enable hands-on practice in a safe work environment, enhancing technical skills and reducing the learning curve.

Students utilize VR headsets to complete virtual labs such as safe work practices, surveying and structural

geology labs, gaining a realistic sense of working in a mine. The VR controllers allow them to interact with the environment, perform tasks and correct errors in a safe, controlled setting. This method fosters a deep understanding of safe work practices, emergency procedures, and essential jobsite skills. This immersive approach not only enhances understanding but also ensures that students are well-prepared for the demands of the industry.

“For Sask Polytech, VR is a game changer,” shares Danielle Faris, academic chair for the Faculty of Technology and Skilled Trades. “It offers a level of realism that traditional classroom settings cannot match. Underground survey, geological and structural mapping are much easier to grasp when experienced in a virtual environment. VR training not only teaches specific tasks but also integrates regulatory requirements, such as using the correct personal protective equipment (PPE) and accounting for workers underground during their shifts and accounting for workers during emergencies.”

Sask Polytech’s innovative use of VR technology in its Mining Engineering Technology program is setting a new standard for mining education. By providing students with immersive, practical experiences, the institution is ensuring that graduates are well-equipped to meet the evolving demands of the mining industry.

Software for the VR headsets is powered by ICOM Productions, a division of The Learning Network.

Learn more about our Mining Engineering Technology program at saskpolytech.ca/programs-and-courses/programs/Mining-Engineering-Technology.aspx. ●



Sask Polytech's innovative use of VR technology in its Mining Engineering Technology program is setting a new standard for mining education.



BENEFITS OF REMOTE-CONTROLLED DEMOLITION ROBOTS FOR POTASH MINING



What if there was a system that offered the safety and productivity of remote operation with the flexibility and precision of a jackleg — and more? Some underground mines have achieved this by adding demolition robots.

By Jeff Keeling, Vice-President of Sales & Marketing, Brokk Inc.

Potash may not be a household term, but it certainly affects every household that buys groceries. Those involved in mining this critical mineral for fertilizer play a major role in helping farmers feed the world. With growing demands for food production, they are continually seeking advanced technology to make mining safer and more efficient.

That's where remote-controlled demolition robots come in. They are game changing for accessing the deepest, narrowest veins. With a compact, remote-controlled demolition robot, miners can drill, blast, bolt, and break remotely. From deep-vein operations to support tasks such as shaft revitalization, here's how demolition robots are helping producers all over the world increase safety and efficiency.

ULTRA-DEEP, NARROW-VEIN APPLICATIONS

Safety risks and logistical needs, such as providing air, electricity, and other utilities, increase exponentially the

deeper a mine goes. By removing the absolute minimum of rock as they chase after ore-rich veins and concentrated salt layers, producers reduce extraction costs and minimize overburden. However, this leads to tight spaces and difficult working conditions for miners at the face.

Traditional ultra-deep mining methods rely on hours of physical labour in extreme conditions using manual tools such as jacklegs, stoppers, and ad-hoc bar and arms. These tools can weigh upwards of 72 pounds (32.4 kilograms). During operation, miners must maintain close contact with the drill, increasing exposure to falling rock, vibrations, sprained backs, pinched fingers, and noise.

Now, what if there was a system that offered the safety and productivity of remote operation with the flexibility and precision of a jackleg — and more? Underground mines have achieved this by adding demolition robots. These compact machines offer exceptional power-to-weight ratios — often on par with machines three times their size — and significantly

outclass even the most advanced jackleg drills. Designed for demanding demolition applications, these machines easily stand up to the heat and pressure of ultra-deep mining, while heavy-duty caterpillar tracks and outriggers allow them to cover even the roughest terrain. An advanced three-part arm provides unrivaled range of motion for drilling, scaling, breaking, and bolting in any direction. The use of hydraulics also eliminates the need for supplying compressed air, which, in turn, minimizes the utility requirement at the face, while electric running guarantees zero-emission operation.

In addition, demolition robots provide versatility that can streamline operations and limit emissions. With the right attachment, operators can move from drilling to breaking to scaling while never getting within 13.1 feet (four metres) of the work surface. Thanks to advances in technology, these machines can also handle much larger attachments than similar-sized equipment, allowing mines to bring powerful tools to new applications without increasing shaft size. It even makes 100 per cent remote drilling and bolting possible since there are several compact demolition robots with ample power to operate carousel attachments.

STOPE RETRIEVAL OPERATIONS

The durability and dexterity of demolition robots doesn't just benefit deep-vein mining operations. Retrieving equipment and materials from stopes has been delegated to demolition robots for some time.

Take a loader retrieval after a rock fall, for example. Some mines have found that demolition robots traverse the uneven ground more quickly than traditional retrieval equipment, and they can break up oversize rock and other obstacles to make extraction easier. The highly maneuverable arm also makes attaching cables through the scoop's lug more efficient.

SHAFT MAINTENANCE OPERATIONS

Opening up shafts or performing shaft maintenance are other areas where remote-controlled demolition equipment can provide more efficiency.

Mining techniques have changed over the years, and for many, operations returning to old veins with more modern equipment can supplement production. However, these shafts are usually found in a very deteriorated state — with large rubble, collapsed supports, and downed utilities — making the process of opening them up slow and dangerous. In addition, safety requirements have advanced along with mining techniques, so revitalizing old shafts can require substantial work to meet modern regulations.

In these types of situations, the versatility of remote-controlled demolition machines can minimize equipment



The versatility of remote-controlled demolition machines can minimize equipment and personnel requirements for highly efficient renovation.

and personnel requirements for highly efficient renovation. Armed with a suite of attachments, a demolition robot can perform almost any required task. These attachments can also make routine shaft maintenance more efficient, allowing mines to maximize productivity for these vital, yet time-consuming and risky operations.

THE FUTURE OF MINING

From ultra-deep to potash extractions just below the surface, demolition robots can increase safety and productivity throughout the mine. Modern mining has many exciting challenges in store for the new generation of technologists who will need creative solutions to supply the world's ever-growing demand for potash.

Working with demolition robot manufacturers to provide mechanized mining and maintenance solutions promises to improve not only current productivity, but ensure a safer, more sustainable future for mining operations. The possibilities are only limited by the imagination.

ABOUT BROKK

Brokk has been the world's leading manufacturer of electric remote-controlled demolition machines and attachments for almost 50 years. Through continuous innovation in engineering and design, Brokk is able to offer unique solutions to multiple industries worldwide, including construction, demolition, mining and tunneling, cement and metal processing, nuclear and other specialty applications.

For more information: Brokk Inc., 17321 TYE Street SE, Suite B, Monroe, WA 98272; 800-621-7856; info@brokkinc.com; www.brokk.com. ●

IMPORTANCE OF COMPRESSOR MAINTENANCE IN THE POTASH ENVIRONMENT

Compressed air is so essential to so many industries that it is often referred to as “the fourth utility”. At the heart of every mining operation is some kind of air compressor, and if the air stops the work stops.

Potash extraction and refining is particularly air-intensive, requiring compressed air for everything from drills to crushers to conveyors. Most potash operations will have more than 1,000 HP in working air compressors, often running 24/7.



A Comairco technician inspects a clean rotor (far) and a varnished rotor (near).

When purchasing an air compressor, great consideration is given to the specifications and purchase price, but maintenance is often overlooked. A properly maintained air compressor will use less energy and last much longer, resulting in a reduced lifetime cost of ownership. As such, the cost of compressor maintenance should be thought of as an investment in cost savings.

The most common air compressor type is the oil-injected rotary screw compressor. These compressors have four main maintenance items:

1. The oil filter element
2. The inlet air filter element
3. The air-oil separator element
4. The lubricating oil

OIL FILTER ELEMENT

Contaminants in your compressor lubricant (metal, water, acid, and other particulates) will reduce performance and can lead to air end failure. An exceptional filter will help reject some of the smallest particles, maintaining the fluid’s quality and performance while helping to protect internal components.

INLET AIR FILTER ELEMENT

Your air filter is critical for shielding the compressor from airborne contaminants. Without a quality filter in place, dirt

COMAIRCO

COMPRESSED AIR SPECIALISTS

WHEN THE MANUFACTURING INDUSTRY NEEDS COMPRESSED AIR, THEY TRUST COMAIRCO TO MEET THEIR EXPECTATION.

INDUSTRIAL COMPRESSORS

TECHNICAL SERVICES

USED EQUIPMENT

EQUIPMENT RENTAL



COMAIRCO SASKATOON
306 653-5755

COMAIRCO REGINA
306 545-3930

800 761-8780

COMAIRCO.COM

builds up in the air end — dragging down the machine's performance and increasing maintenance costs. Not all elements are created equally, and the efficiency rating of the element should be considered. For example, an element rated at 99.9 per cent efficiency (per ISO5011) will catch particles up to five times smaller compared to substitute products.

AIR-OIL SEPARATOR ELEMENT

Just as dust contaminates air, so too can compressor fluid. Without the proper parts, an oil flooded compressor will dish out excess levels of lubricant along with the air. The function of the air/fluid separator is to retain fluid in the system for re-use in the compressor unit.

A high-quality separator should be rated for an oil carry-over rate of one to two parts per million, while a lower quality element may be rated for five parts per million. Although this sounds like a small difference in contamination, for a 100HP compressor with a 24/7 operating schedule it equates to a difference of eight gallons of oil loss per year.

With a high-quality element, fluid is effectively retained and re-used, meaning fewer top-offs — saving you money.

LUBRICATING OIL

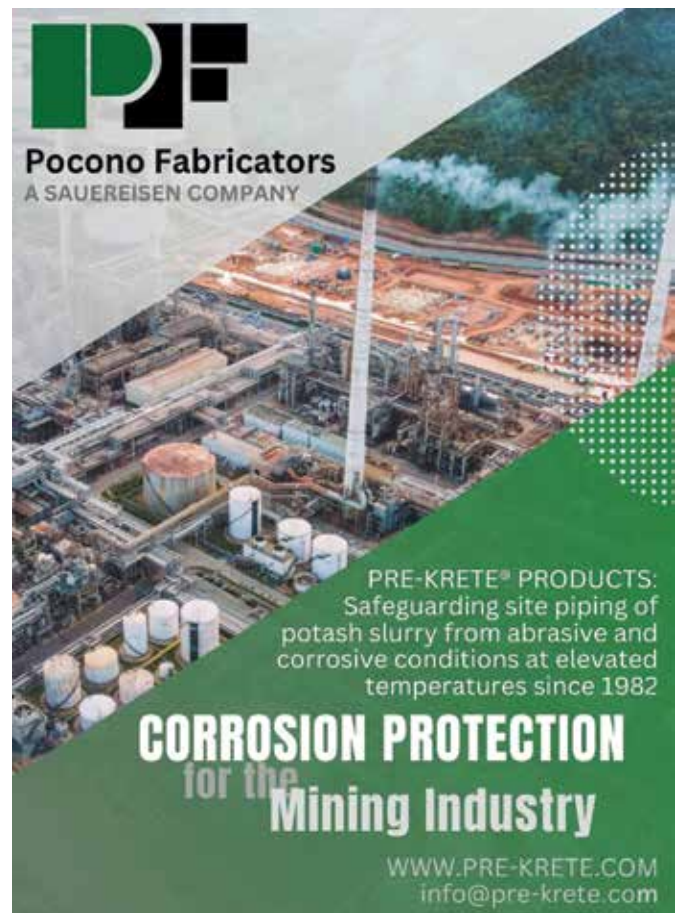
It's vital to trust what goes into your air compressor as much as the machine itself. Lubricants serve a critical role in compressor performance, with three major functions:

- Lubricate rotors and bearings during compression,
- Help dissipate heat produced by compression,
- Seal gaps between rotors.

We strongly recommend Sullube by Sullair, an extended life, polyglycol base, and synthetic fluid for stationary rotary screw compressors. Proven for more than a quarter-century, this long-lasting fluid costs less per hour over your equipment's life. It also prevents the formation of varnish — the leading cause of rotary screw compressor air end failure — and keeps compressors running exceptionally clean and cool.

OIL ANALYSIS

Many manufacturer warranties now require periodic analysis of the compressor oil, often it is a requirement for maintaining the warranty. A fluid analysis program can help predict potential problems before a major or unplanned repair occurs — helping avoid unnecessary downtime and plan service and maintenance actions during the most optimal times. ●

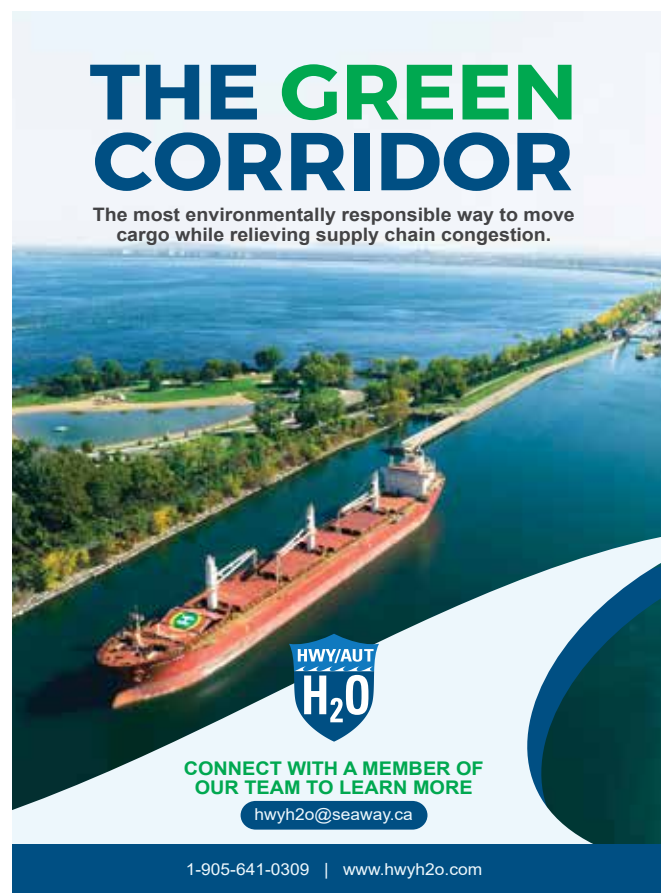


Pocono Fabricators
A SAUERISEN COMPANY

PRE-KRETE® PRODUCTS:
Safeguarding site piping of
potash slurry from abrasive and
corrosive conditions at elevated
temperatures since 1982

CORROSION PROTECTION
for the
Mining Industry

WWW.PRE-KRETE.COM
info@pre-krete.com



THE GREEN CORRIDOR

The most environmentally responsible way to move cargo while relieving supply chain congestion.

HWY/AUT H₂O

CONNECT WITH A MEMBER OF
OUR TEAM TO LEARN MORE
hwyh2o@seaway.ca

1-905-641-0309 | www.hwyh2o.com



Komatsu has focused efforts on automating continuous miners (CMs) and haulage systems, prioritizing the well-being of those who work in these demanding environments while streamlining operations and enhancing performance.

PROMOTING SAFER, MORE PRODUCTIVE SHIFTS IN ROOM AND PILLAR MINING

Every day, room and pillar miners work in an environment that requires endurance, awareness, and adaptability. Each shift is a commitment to navigating intricate underground passages, operating heavy machinery and adapting to the mine's ever-changing geological conditions.

To address key operational needs, mining companies around the world are integrating automation into their underground operations. This shift is driven by the desire to enhance

safety, boost productivity, improve equipment reliability, and ensure consistent product quality.

Recognizing these needs, Komatsu has made worker safety a driving force behind its innovations.

"We're leveraging automation to increase safety, as well as efficiency, automating repeated tasks to drive consistency and increase operator alertness," says Toby Cressman, director, controls and automation for Komatsu Mining.

This commitment translates directly

into Komatsu's focused efforts on automating continuous miners (CMs) and haulage systems, prioritizing the well-being of those who work in these demanding environments while streamlining operations and enhancing performance.

Komatsu offers a suite of continuous miner automation (CMA) levels, ranging from manual operation to fully automated sequences and heading control.

"We've integrated a flexible conveyor train (FCT) with our 12HM46 CM in an autonomous state," says Cressman.

“This automated process is designed to help mining companies streamline their material haulage, reduce manual intervention, and improve overall efficiency by enabling continuous cutting and conveying with minimal downtime.”

This integration represents a significant step toward making room and pillar operations safer and more productive. Using ultrawide band (UWB) sensors, the FCT’s “follow-me” functionality keeps it synchronized with the 12HM46 as it sumps and shears. This seamless trailing results in a continuous material flow, which is crucial for enabling operators to work from remote management centres (RMC) located away from the face.

Safety remains a core value at Komatsu.

“Our goal is to create a more controlled and predictable environment for miners,” says Cressman. “The FCT working in conjunction with the 12HM46 in an autonomous state is intended to help reduce the number of mobile machines and personnel in hazardous areas.”

When operated with automated sequences, the 12HM46 CM performs cutting cycles (sumping and shearing) with precise consistency, helping to reduce variations that can occur with manual operation due to fatigue or differing skill levels. This can result in smoother ribs, floors, and roofs, which can help minimize the need for rework and reduce material waste.

Komatsu’s autonomous system builds on this foundation, enhancing

control and predictability while reducing operational variability. Automated cutting cycles and precise heading control can help enable consistent extraction, while the FCT maintains a steady material flow, potentially reducing traditional haulage disruptions. In addition to productivity gains, the system is designed with safety in mind.

By automating material transfer, the system helps minimize spills, while sensor-based navigation works toward reducing collision risks. Limiting personnel exposure near the face enhances worker safety, and optimized operations with fewer mobile machines can help contribute to lower dust and noise levels.

Automation can also help reduce operator fatigue, allowing operators

Innovative solutions. Positive transformation.

You need a partner that can meet your needs and embrace the future. One with new solutions for a changing world. Together, we can work toward a better future. komatsu.com/12HM46

KOMATSU 





Komatsu's integrated FCT and 12HM46 CM system marks a pivotal advancement in room and pillar mining, helping to deliver new levels of efficiency and safety through autonomous operation.

to focus on high-level tasks like monitoring and data analysis. The system's intuitive interface delivers real-time diagnostics, helping operators quickly identify issues, monitor performance, and manage operations effectively. Additionally, the system generates valuable data for optimization and predictive maintenance, driving continuous improvements in efficiency and safety.

"We're seeing a real shift in how automation is being perceived," Cressman adds. "It's not just about efficiency; it's about creating a better work environment for miners. Customers can use their data to refine their processes so they can achieve both high productivity and foster a supportive work environment."

Komatsu's system helps pave the way for "lights-out" mining, where automation minimizes human

intervention. This integration is a crucial step toward fully autonomous operations, allowing operators to monitor multiple sections from remote control rooms. Komatsu's ongoing research in AI and robotics promises further advancements, with intelligent systems adapting to dynamic underground conditions.

Automation also enhances sustainability in room and pillar mining by optimizing resource use and reducing waste. For instance, the automated 12HM46 minimizes material waste through precise cutting, while the FCT reduces spills during material transfer. Automated haulage can help lower dust and noise, too, reducing potential exposure to dust and noise. Data analytics from these systems further support mine planning and reclamation.

"Sustainability is a key part of our innovation strategy," Cressman emphasizes. "Our automation systems are designed to help mines reduce their environmental footprint while maintaining productivity."

Komatsu's integrated FCT and 12HM46 CM system marks a pivotal advancement in room and pillar mining, helping to deliver new levels of efficiency and safety through autonomous operation. This technology exemplifies Komatsu's unwavering commitment to innovation, prioritizing worker well-being and sustainable mining practices. By automating critical processes and reducing human intervention, this system is designed to reshape underground operations — working to make mining safer, more productive, and environmentally responsible. ●

PDAC 2025 DRAWS 27,353 PARTICIPANTS TO TORONTO



The Prospectors & Developers Association of Canada (PDAC) proudly celebrated another landmark gathering with PDAC 2025, which brought together 27,353 participants to explore premier business prospects, investment opportunities, and professional networks in the global mineral exploration and mining sphere. Showcasing more than 1,100 exhibitors—including government representatives, corporate leaders, and technical specialists from across the world—PDAC 2025 upheld its reputation as the industry’s most influential convention.

“Year after year, the PDAC Convention is the place to be for unveiling the latest market insights, advances in technology, and for fostering essential partnerships,” said Raymond Goldie, PDAC president. “In 2025, we continued that legacy by bringing together not only a wide array of educational programming focused on crucial areas such as capital markets, Indigenous engagement, career development, and sustainability, but also a dynamic trade show and company presentations to investors, offering exhibitors and attendees invaluable opportunities for business growth and collaboration.”

Beyond highlighting trailblazing innovation and thought leadership, PDAC 2025 provided a vital platform for dialogue between industry



stakeholders and government officials. PDAC’s leaders used this forum to emphasize the impact of forward-looking public policy on maintaining Canada’s competitive edge in the mineral sector.

“Minerals are the backbone of modern technology and are indispensable to our daily lives, highlighting the essential role of mineral exploration and mining in Canada’s economic strength and resilience,” Goldie noted. “This week, PDAC was encouraged by the federal government’s commitment to extend the Mineral Exploration Tax Credit (METC) for two years. Our priority now is to ensure that this commitment becomes law, and we’ll continue pushing for it to have a permanent place in Canada’s fiscal framework.”

Goldie extended his heartfelt appreciation to everyone who helped make PDAC 2025 such a success—volunteers, speakers, sponsors, delegates, and PDAC’s staff. The association eagerly anticipates welcoming participants back for PDAC 2026 on March 1-4, 2026.

ABOUT PDAC

The Prospectors & Developers Association of Canada (PDAC) is the leading voice of the mineral exploration and development community, an industry that employs more than 664,000 individuals, and contributed \$132 billion to Canada’s GDP in 2021. Currently representing over 8,000 members around the world, PDAC’s work centres on supporting a competitive, responsible, and sustainable mineral sector. ●

UBC MILLWRIGHTS POWERING SASKATCHEWAN'S MINING AND POTASH INDUSTRY



The mining sector is one of the primary drivers of Saskatchewan's economy, with potash production leading the way.

Saskatchewan is home to some of the world's largest potash and mining operations, providing essential resources for global food production and industrial applications. The Millwright Regional Council (MRC) and UBC Millwright Local 1021 Saskatchewan are at the heart of this industry, ensuring that mining and potash facilities operate safely, efficiently, and with the highest level of precision.

SUPPORTING SASKATCHEWAN'S ECONOMIC BACKBONE

The mining sector is one of the primary drivers of Saskatchewan's economy, with potash production leading the way. As demand continues to grow worldwide, maintaining and expanding these operations requires a highly skilled workforce. The UBC Millwrights and our contractor partners play a critical role in the construction, maintenance, and optimization of the complex machinery that keeps mining operations running smoothly.

UBC millwrights are trained to handle the specialized challenges of the potash industry, including working in high-salinity environments, performing precision alignments on large rotating equipment, and maintaining conveyor systems that transport millions of tonnes of material each year. Their expertise ensures minimal downtime and maximizes production, supporting the province's economic stability and job creation efforts.

SAFETY AND PRECISION IN MINING OPERATIONS

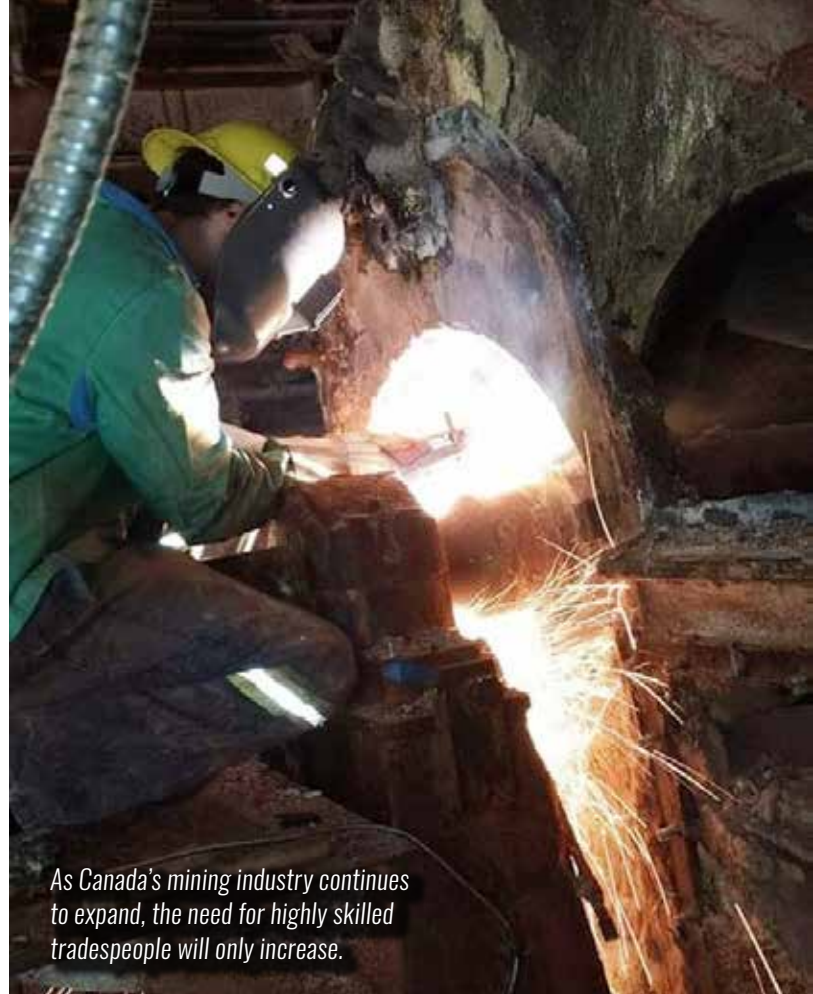
Mining is a high-risk industry that demands the utmost commitment to safety. The Millwright Regional Council and our contractor partners uphold the highest safety standards and ensure compliance with provincial regulations and best practices. With rigorous training and continuous education, UBC millwrights are prepared to tackle the evolving challenges of the industry, including automation and advanced mechanical systems.

By working closely with contractors and industry stakeholders, the UBC millwrights provide the expertise and reliability needed to keep major projects on schedule and within budget.

Through ongoing collaboration with potash producers and our partner contractors, UBC Millwright Local 1021 Saskatchewan helps to implement innovative solutions that increase efficiency and reduce environmental impact. Their work in equipment installation, predictive maintenance, and shutdowns ensures that Saskatchewan's mining operations remain competitive on the global stage.

STRENGTHENING INDUSTRY PARTNERSHIPS

The MRC is committed to fostering strong partnerships with Canada's mining sector. By working closely with contractors and industry stakeholders, the UBC millwrights provide the expertise and reliability needed



As Canada's mining industry continues to expand, the need for highly skilled tradespeople will only increase.



**MILLWRIGHT
REGIONAL COUNCIL**

Canada's mining industry runs on precision, efficiency, and reliability—so should your workforce.

The Millwright Regional Council (MRC) connects mining contractors and owners with highly trained, job-ready millwrights to keep your operations moving. Whether you're ramping up for a shutdown, major installation, or critical repair, we provide the skilled professionals you need—on time and on budget.



**REDUCE DOWNTIME.
IMPROVE EFFICIENCY.
BUILD WITH CONFIDENCE.**

Partner with MRC Today.
ubcmillwrights.ca

**SKILLED WORKFORCE.
ON-DEMAND.
ANYTIME. ANYWHERE.**





Through ongoing collaboration with potash producers and our partner contractors, UBC Millwright Local 1021 Saskatchewan helps to implement innovative solutions that increase efficiency and reduce environmental impact.

to keep major projects on schedule and within budget.

Through initiatives such as specialized training programs and workforce development efforts, the MRC ensures that its members are equipped with the latest skills to meet industry demands. These efforts not

only benefit contractors and producers but also contribute to the long-term success of Canada's mining economy.

LOOKING TO THE FUTURE

As Canada's mining industry continues to expand, the need for highly skilled tradespeople will only

increase. The Millwright Regional Council is dedicated to growing its presence in every province, ensuring that industry partners have access to a workforce that is skilled, safe, and professional.

With the right training, partnerships, and commitment to excellence, the UBC millwrights will remain essential to the success of Saskatchewan's potash and mining industries across Canada for years to come.

ABOUT THE MILLWRIGHT REGIONAL COUNCIL

The Millwright Regional Council (MRC) is composed of 12 affiliated Local Unions of the United Brotherhood of Carpenters and Joiners of America (UBC) across Canada. The UBC millwrights are vital partners in diverse industries such as energy, automotive, aerospace, food processing, and pharmaceuticals. For more information, visit ubcmillwrights.ca. ●





More mining publications

B.C.
MINING *Review*

digital magazine



CRITICAL
minerals
REVIEW

ONTARIO
MINING *Review*

digital magazine



THE
PotashTM
PRODUCER
DIGITAL MAGAZINE | A POTASHWORKS COMPANION

Revue minière du Québec
QUEBEC Mining **REVIEW**
digital magazine / magazine numérique

PotashTM
WORKS

Revue minière du Québec
QUEBEC Mining **REVIEW**

**Click or scan to
subscribe
to ALL.**



SEEING CLEARLY: WHY COMPREHENSIVE VISION CARE IS A MUST FOR BENEFITS PLANS

By Andrea Hansen, President, Sutton Benefits & Pension

Clear vision is essential in industrial workplaces, where precision and safety underpin every shift. Yet, vision care remains an overlooked or underfunded part of employee benefits packages for too many workers.

Across Canada, vision care lags behind other health benefits in priority. The Canadian Association of Optometrists reports that more than 11 million Canadians need vision correction, yet many employer plans cap coverage at outdated

maximums of \$200 to \$250 — barely enough for a basic pair of glasses, let alone specialized needs. Eye exams, often limited to maximums like \$125, fall short of covering thorough assessments that catch conditions like glaucoma, which affects one-in-six adults over their lifetime.

The Canadian Ophthalmological Society estimates that untreated vision issues cost the economy \$4.3 billion annually in lost productivity. In labour-intensive roles like operating haul trucks or monitoring conveyor

systems, uncorrected vision can lead to eye strain, migraines, and reduced efficiency.

A U.S. Vision Impact Institute study found that correcting vision in industrial workers boosts productivity by up to 20 per cent. For a manufacturing operation, where downtime can cost thousands per hour, that's a compelling case for rethinking benefits.

A comprehensive vision care program that includes annual exams, subsidized eyewear, and protective gear could cut these risks and keep your team safe.



VISION CARE INFLUENCES EMPLOYEE SATISFACTION

Labour shortages have surpassed inflation as a top concern in the resource and industrial sectors, and attracting and retaining talent demands more than competitive wages. Comprehensive vision care, as part of a robust benefits plan, isn't just a perk; it's a strategic investment in productivity, safety, and employee loyalty.

A 2022 Benefits Canada survey ranked vision care among the top-five perks influencing employee satisfaction. Dental benefits are widely accepted

VAPOR LOCK

MAKING CONCRETE IMPERMEABLE

Vapor Lock concrete closes the open capillaries, stops:

- Moisture vapor emission
- Water and chemical intrusion

VAPOR LOCK ADMIXTURE

Makes concrete impermeable to potash/brine deterioration. Encapsulates steel reinforcement and protects from ever corroding.

Vapor Lock concrete improves:

- Concrete performance and service life
- Adhesion of coatings and adhesives

MG-KRETE

BRINGING CONCRETE BACK TO LIFE

- Salt, moisture and chemically resistant mortar
- Ionic bond to concrete
- No minimum or maximum depth of install
- Stronger than concrete in 45 minutes



LAJCON CONCRETE DISTRIBUTORS
250-103rd Street E.
Saskatoon, SK S7N 1Y7
306-229-6766
lajcon@sasktel.net
www.lajconcrete.com



The Canadian Ophthalmological Society estimates that untreated vision issues cost the economy \$4.3 billion annually in lost productivity.

as essential and generously covered; vision should be no different.

Expanding coverage for eyewear demonstrates a commitment to employee well-being and reinforces a company's reputation as a competitive employer. However, integrating eyewear into a standard benefits plan can be costly and may lack the flexibility to meet diverse needs.

A health spending account (HSA) offers an adaptable alternative, allowing employees to allocate funds based on their individual requirements. While HSAs can be cost-effective, they may not provide sufficient support for employees with ongoing or high-cost vision needs.

A blended approach — raising vision care maximums while offering an HSA for additional flexibility — allows employers to provide meaningful coverage without overextending costs. This structure ensures employees with basic needs are covered while those requiring specialized eyewear or frequent updates have options to supplement their care.

Too often, benefits plans prioritize low premiums over real support, but the math favours investment. The Canadian Ophthalmological Society calculates that every \$1 spent on vision care saves \$4 in productivity losses and healthcare costs.

Saskatchewan's industrial and resource supply chain, bolstered by initiatives like the Saskatchewan Industrial and Mining Suppliers Association's Protecture plan, is well-positioned to lead on this front. Flexible, employee-focused benefits aren't about cutting corners but building a thriving workforce.

Comprehensive vision care isn't a frill to be capped at yesterday's limits; it's necessary for today's challenges. With labour shortages tightening and retention strategies under scrutiny, employers who see the value in clear vision will keep their teams and their edge in focus. ●



Protecture
SIMSA MEMBER BENEFITS PLAN

**Coverage
you can be
sure of.**



Robust, top-of-the-line benefits package



Inclusive coverage, customizable tiers

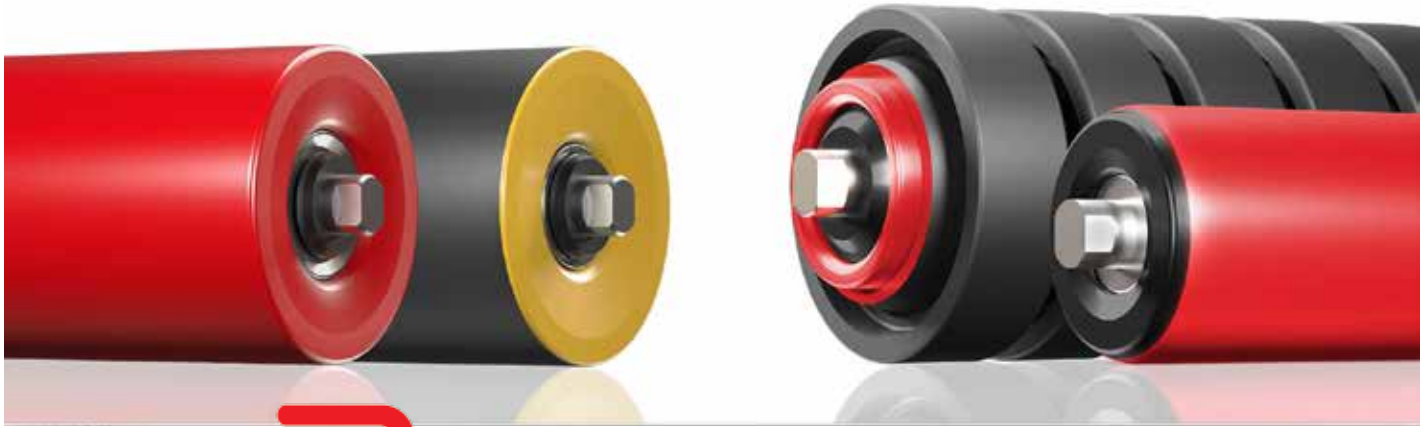


Leveraging over 30,000 employees in SIMSA membership

Elevate your employee benefits experience with Protecture – SIMSA Member Benefits Plan. Visit simsa.ca/benefitsplan to learn more.

Let Protecture work for you. Get Started Today!

RULMECA CANADA: PREMIUM MATERIAL HANDLING COMPONENTS, PROUDLY CANADIAN MADE



RULMECA®
MOVING AHEAD

Rulmeca Canada Limited is an OEM of premium material handling components for both bulk and unit handling applications. Components include rollers/frames, garlands, motorized and conventional pulleys, training frames, take ups, and magnetic separators.

Rulmeca Canada operates a state-of-the-art manufacturing facility which employs the latest in design and technological advancements. At the forefront of the industry, our facility is in constant evolution offering our standard designs and custom solutions for our client's specific needs. We specialize in producing heavy-duty components for customers' operating systems in the harshest of environments.

From the production and supply of services related to CEMA class components, our go-to market strategy includes direct sales and alignment with key distributors strategically located across the country to service and supply a large and diverse group of material-handling

operations such as oil sands, iron ore, potash, salt, port terminals, pulp and paper, coal, diamond, gold, nickel, etc. Our unit handling customers range from domestic and commercial food, agricultural, beverage, packaging, and distribution facilities.

Rulmeca Group started its manufacturing activity of material handling components for conveyors in 1962 and continuously developed its business until it has become a renowned and trusted international partner for both conveyor systems manufacturers and end user partners. Experience and innovation are certainly the main drivers supporting the Rulmeca Group success.

Rulmeca Canada is one of many manufacturing and sales offices strategically located around the world, all producing products to 'exacting quality standards' in most cases, using the same components.

Rulmeca Group offers all material handling components needed to build heavy- and light-duty conveyors: rollers, idlers, drive rollers, drum motors, motorized pulleys, belt cleaners, covers, impact bars, and much more.

For those of you familiar with Rulmeca and for those first experiencing the Rulmeca difference – every opportunity, every purchase order, and every piece of OEM equipment leaving our facility receives the same care and control that has built our reputation as an industry leader. ●



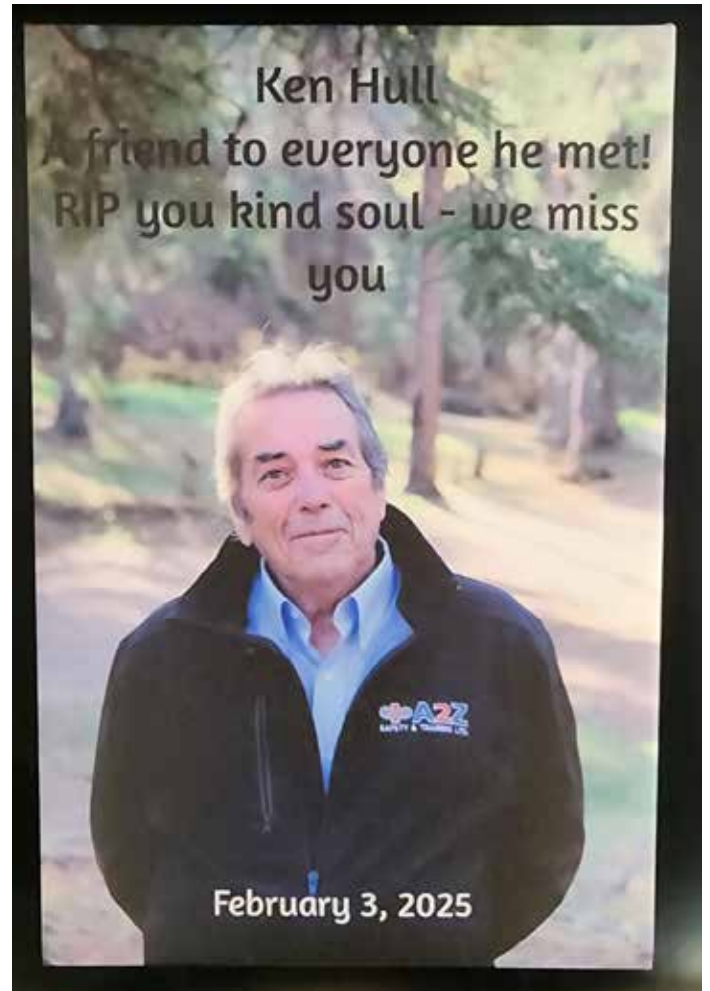
PREMIUM COMPONENTS FOR MATERIAL HANDLING

Rulmeca offers a wide range of quality Rollers/Idlers, Motorized Pulleys, Pulleys and components used in the most demanding applications in belt conveyors material handling. We are close to you, whenever you need us, with a global network of sales and service centers.



A2Z SAFETY & TRAINING LTD. – WHY CHOOSE US?

By Elizabeth Montgomery, Manager



Above left: Pattison Media hosts a fabulous evening filled with food and dance from local businesses and musicians, and it is a wonderful night for our staff to let loose and have fun while being recognized for their hard work. Above: Our senior and much-loved instructor Ken Hull passed away on February 3, 2025. He will be missed.



Our mission is to provide practical, focused and relevant training programs and services.

- DAILY CLASSROOM TRAINING
- ON-SITE TRAINING
- DRUG & ALCOHOL TESTING
- RENTALS & SALES
- CONSULTING & MEDIC STANDBY

a2zsafety.ca

T: 306-960-2881 TF: 1.855.756.2884

info@a2zsafetyandtraining.ca

Knowing where to take training and ensuring it is up to date with best practices and instructed by certified trainers can be a daunting task at times. It is a financial investment and time consuming, and you want to know if your ticket is recognized by industry, the instructor is well-versed, and you walked away learning something and feeling confident you know your stuff. At A2Z Safety & Training we ensure our instructors all have industry experience and specific train-the-trainer courses while we maintain good standing with all our third-party certificate providers. Continuing education and following best practices is important to our safety industry as is honesty

and integrity. The foundation of Trevor Montgomery's business model is "to provide practical, focused, and relevant training programs and services".

In our Prince Albert classroom, we run courses Monday through Friday and often two weekends a month. Aside from the foundation of good business, you can also count on flexibility with our schedule and the ability to meet your needs. We travel to your location, we can provide online learning, certified drug and alcohol testing, qualitative FIT testing, and we have NCSO's who can tailor-make your safety plans for your needs. If you need specialty training and have no manual set up, we can help. We are always moving forward and adapting to the industry needs.

In our Prince Albert area, our local advertising station has put on a competition for businesses in the community, where people can vote for the best industry or service, including, best safety training. Since its inception in 2015 our clients and supporters cast enough votes every year to earn us the title of "Best Safety Training". Pattison Media hosts a fabulous evening filled with food and dance from local businesses and musicians, and it is a wonderful night for our staff to let loose and have fun while being recognized for their hard work. This year as we gathered for our annual photo, our hearts were heavy as we did not have our senior and much-loved instructor Ken Hull with us. Hull had to step away in September of 2024 to manage his health, and sadly on February 3, 2025, he passed away with family by

his side. Hull was well known for his sense of humour and unwavering kindness. He crossed paths with many people in his work career and always left an impression. We certainly miss him.

In closing, A2Z Safety & Training is family owned, certified by multiple third parties and subject matter

experts. We are approachable and want to help you succeed in your training. Based out of Prince Albert, Sask., we travel the province, have been to Alberta and Manitoba to provide training, and will always value our staff, clients, and partners who continue to allow us to do so. ●



SaskWater

Want peak performance from your water supply system?

Wish you had access to a diverse team of experts with over 60 years' experience?

We have the answers.
Visit saskwater.com/industrial-overview



*Coast
to Coast
Distribution*

CRITICAL minerals

¹⁸**R** ⁵**E** ²²**V** ⁹**I** ⁵**E** ²³**W**



Biannual digital magazine

Open
full-screen
mode

Ad prices

criticalmineralsreview.com