

# *42nd Annual* **Concrete Paving Workshop**



Nebraska Concrete Paving Association



**NEBRASKA**  
DEPARTMENT OF TRANSPORTATION

**January 18-19, 2022**  
**Cornhusker Marriott**  
**Lincoln, Nebraska**

# AGENDA

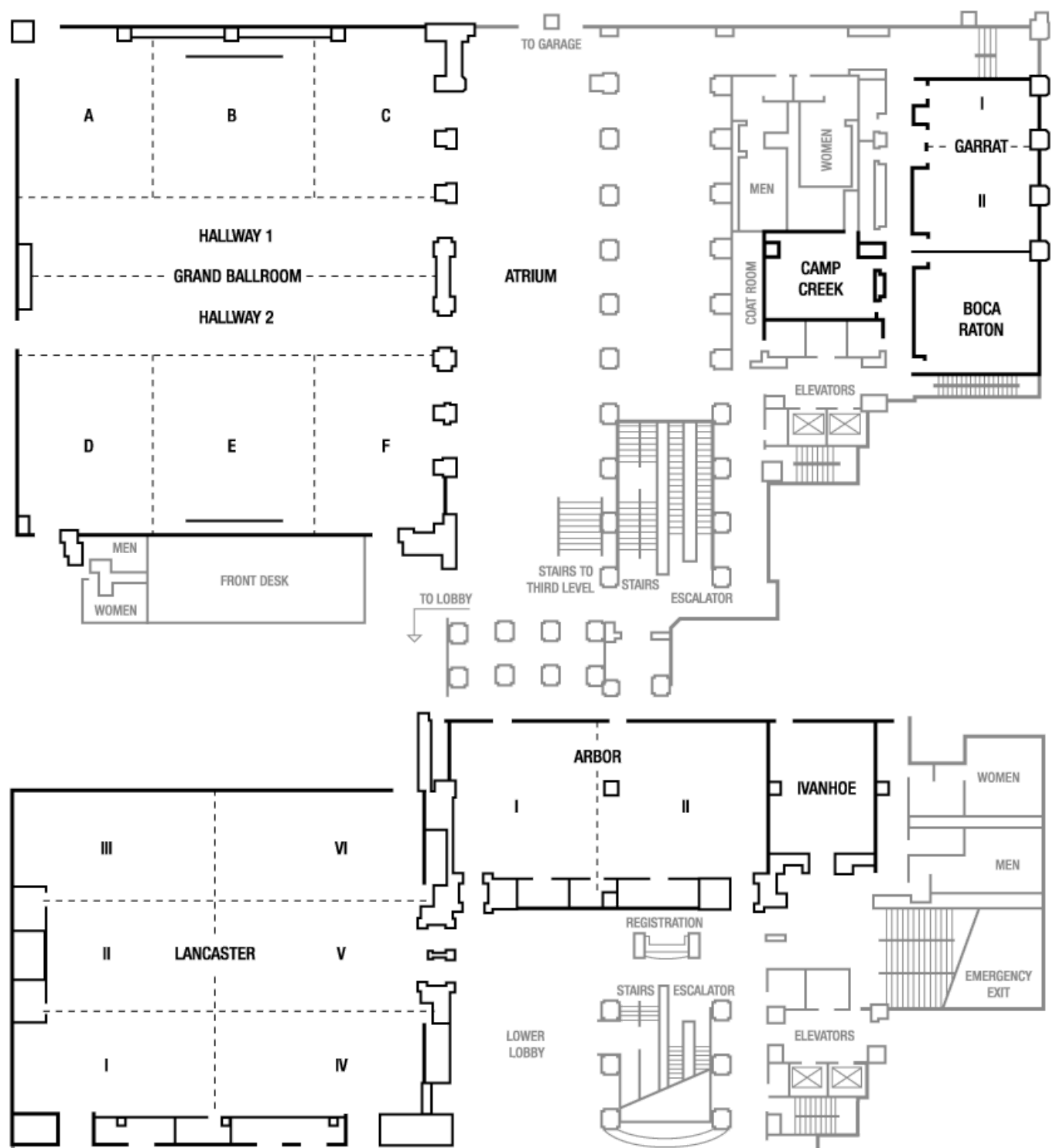
Tuesday, January 18, 2022		Moderator: Bruce Grupe (NCPA)	Grand Ballroom
7:00 am to 5:00 pm	REGISTRATION OPEN ALL DAY		
9:00 am to 9:10 am	Welcome	Bruce Grupe, P.E. (NCPA Executive Director)	
9:10 am to 9:30 am	5-Minute Presentations	Exhibitors and New Members	
9:30 am to 10:00 am	State of the State	John Selmer (Director, NDOT)	
10:00 am to 10:30 am	BREAK		
10:30 am to 11:00 am	Update on FHWA Activities/Programs	Joe Werning (Nebraska Division Administrator, FHWA)	
11:00 am to 11:30 am	Update on Expressways-Statewide	Moe Jamshidi (Deputy Director-NDOT)	
11:30 am to 12:00 pm	NDOT Airport Activities/Updates	Ann Rickart (Airport Division Manager, NDOT)	
12:00 pm to 1:30 pm	PAVING AWARDS CEREMONY & LUNCH		
1:30 pm to 3:00 pm	BREAKOUT SESSIONS		
3:00 pm to 3:30 pm	BREAK		
3:30 pm to 5:00 pm	BREAKOUT SESSIONS		
5:00 pm	RECEPTION		
Wednesday, January 19, 2022		Moderator: Jeff Mulder (NC&AA)	Grand Ballroom
6:30 am to 8:00 am	BREAKFAST	Grand Ballroom ABC	
8:00 am to 8:45 am	Update on Lincoln’s South Beltway	Curt Mueting (NDOT)	
8:45 am to 9:30 am	Green Management (PLC, EPD, Carbon Encapsulation)	Megan Dangel (Central Plains Cement)	
9:30 am to 10:00 am	BREAK		
10:00 am to 10:45 am	Precast Box Culverts	Luke Ritter (Hawkins Construction)	
10:45 am to 11:30 am	Update on Connect Sarpy County Project	Tony Egelhoff (Olsson)	
11:30 am	Raffle Prize and Door Prizes		
NCPA Members: Brief Annual Meeting Jan. 19th - 8 AM followed by Board Meeting			

**To receive up to 8.0 PDH credit:**  
Be sure to complete and turn in the  
PDF forms inside this booklet

# BREAKOUTS

	<b>SESSION 1</b> Grand Ballroom DEF  Moderator: Scott Barnett	<b>SESSION 2</b> Grand Ballroom ABC  Moderator: Jeff Mulder (NC&AA)	<b>SESSION 3</b> Arbor I/II  Moderator: Mark Deetz
1:30 to 2:00 pm	<b>Ultra-High Performance Concrete for Bridges</b>  Fouad Jaber (NDOT)	<b>South Dakota State CIM Program</b>  <b>Tim Hostetler (SDSU)</b>	<b>Fiberglass Rebar</b>  Jon Fischer (Owens Corning)
2:00 to 2:30 pm	<b>Aerial Thermographic for Bridge Decks</b>  Kent Miller (NDOT)	<b>QA/QC for PCCP Update after First Year</b>  Andy Dearmont (NDOT)	<b>Carbon Cure</b>  Brandon Williams (Carbon Cure)
2:30 to 3:00 pm	<b>Restricted Crossing U-Turns RUT-Panel</b>  Mick Syslo Mike Steffensmeier	<b>Precast in Pavements (US6, I680)</b>  Bruce Barrett (NDOT)	<b>Recycled Concrete Aggregate for Concrete Application</b>  Dr. Jiong Hu (University of Nebraska)
3:00 to 3:30 pm	BREAK		
3:30 to 4:00 pm	<b>Ethics for Engineers</b>  Todd W. Weidemann (Woods-Aitken, LLC)	<b>Topic: TBD</b>  Gordon Smith (Concrete Pavement Tech Center)	<b>Evaluating Deicing Products During Winter Weather</b>  Dave Hansen (NDOT)
4:00 to 4:30 pm		<b>Update on Admixtures and Sequencing</b>  Terry Harris (GCP Applied Construction Products)	<b>FHWA Mobile Research Truck</b>  Andrew Heuerman (FHWA)

# CONFERENCE MAP





# FHWA Mobile Concrete Laboratory

---

Take time to visit the FHWA Mobile Concrete Laboratory!

*See new tests that can be used to improve mix designs, and tests that can predict how a concrete mix will behave while paving.*



*The Mobile Concrete Laboratory is located on the north side of the Cornhusker Marriott. Be sure to stop by the lab and visit with Jagen Gudimettia, MCL Project Engineer.*

# BOARD of DIRECTORS

---

Eric Anderson

Kurt Peyton

Bill Ringsdorf

Jed Paulsen

Steve Wobken

# PLANNING COMMITTEE

---

Andy Dearmont

Bill Wehling

Chad Price

Danielle Vachal

David Marz

Dr. Jiong Hu

Jeff Mulder

Jim Witt

Joel Sedlacek

Kirk Havranek

Marty Stovall

Mat Nisotis

Mike Willman

Nicole Veys

Paul Kostal

Tim Hegeholz

Tyler Jensen

Tyson Vogt

Wally Heyen

# SPEAKERS' CONTACT INFORMATION

---

Name	Organization	Phone	Email
Bruce Grupe	NCPA	402.499.7105	bgrupe@nebrconc.org
John Selmer	Nebr. DOT	402.479.4671	john.selmer@nebraska.gov
Joseph Werning	Nebr. Div., FHWA	402.742.8461	Joseph.Werning@dot.gov
Moe Jamshidi	Nebr. DOT	402.479.4671	Moe.Jamshidi@nebraska.gov
Ann Richart	Nebr. DOT-Aeronautics Division	402.471.7922	ann.richart@nebraska.gov
Fouad Jaber	Nebr. DOT	402.479.3967	fouad.jaber@nebraska.gov
Kent Miller	Nebr. DOT	402.479.4705	kent.miller@nebraska.gov
Mick Syslo	Nebr. DOT	402.479.4750	mick.syslo@nebraska.gov
Mike Steffensmeier	Paulsen, Inc.	308.784.3333	msteffensmeier@paulseninc.com
Todd Weidemannont	Woods/Aitken Law Firm	402.898.7454	tweidemann@woodsaitken.com
Tim Hostetler	South Dakota State - CIM	605.688.6998	timothy.hostettler@sdstate.edu
Andy Dearmont	Nebr. DOT	402.479.4451	andy.dearmont402-898-7454
Bruce Barrett	Nebr. DOT	402.479.4096	bruce.barrett402-898-7454
Gordon Smith	National Conc. Paving Tech. Center	515.250.3027	glsmith@iastate.edu
Terry Harris	GCP Applied Technologies	402.547.9613	Terry.Harris@gcpat.com
Jon Fisher	Owens Corning	800.869.0359	jon.fisher@hughesbros.com
Dr. Jiong Hu	University of Nebraska	402.554.4106	jhu5@unl.edu
Brandon Williams	Corbon Cure	916.613.3495	bwilliams@carboncure.com
Dave Hansen	Nebr. DOT	402.479.4583	david.t.hansen@nebraska.gov
Michael Praul	FHWA	202.366.1335	michael.praul@dot.gov
Curt Mueting	Nebr. DOT	402.471.0850	curt.mueting@nebraska.gov
Megan Dangel	Central Plains Cement	918.437.3902	MDangel@centralplainscement.com
Luke Ridder	Hawkins Construction	402.231.7814	lriddler@hawkins1.com
Tony Egelhoff	Olsson	402.938.2421	tegelhoff@olsson.com

# EXHIBITORS

---

Logan Contractors Supply  
Murphy Tractor & Equipment Co.  
Q's Lights & Sirens  
RW Engineering & Surveying  
Shaffer Communications  
  
South Dakota State -  
Concrete Industry Management



# SPONSORS

---

## **Gold Eagle Sponsors**

Ash Grove Cement • Central Plains Cement  
GCC of America • GOMACO • Martin Marietta Materials  
Logan Contractors Supply • NEBCO • Constructors, Inc.  
• Paulsen, Inc.

## **Sponsors**

A & R Construction  
Alfred Benesch & Company  
Arps Red-E-Mix, Inc.  
Astec Industries (CON-E-CO)  
Boral Resources  
Euclid Chemical  
E & A Consulting Group, Inc.  
Gehring Construction. & Ready Mix  
GCP Applied Technologies  
JEO Consulting Group  
JINCO, LLC  
Kirkham Michael

Koss Construction  
Lyman-Richey Corporation  
Mid-State Engineering & Testing  
Murphy Tractor & Equipment  
Olsson  
RW Engineering  
Speece-Lewis Engineers, Inc.  
TAB Construction  
The Schemmer Associates  
Thiele Geotech, Inc.

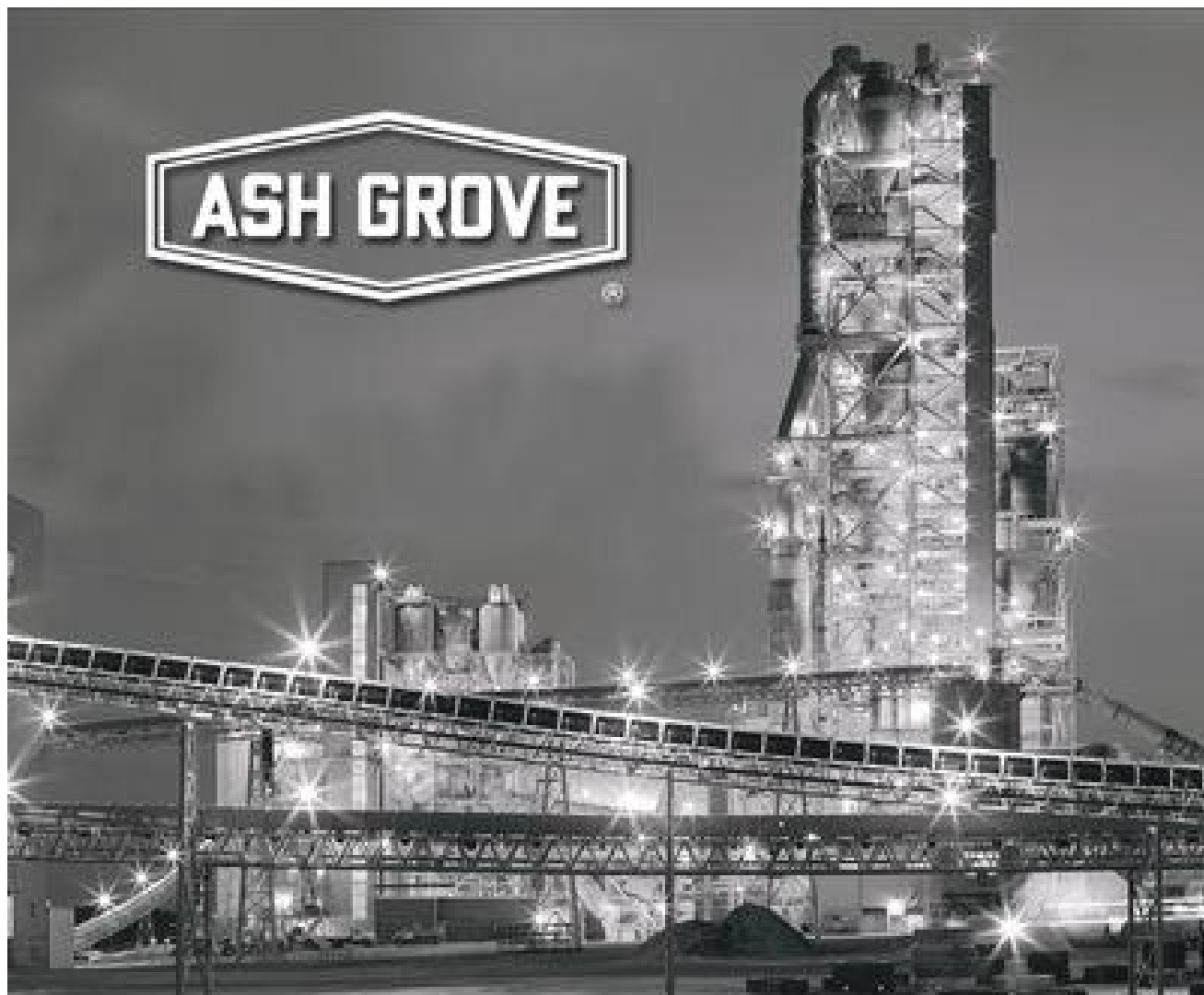
## **Special Sponsors**

Nebraska Concrete & Aggregates Association  
Nebraska Chapter ACI  
Nebraska Department of Transportation  
FHWA - Nebraska Division

---

## Sponsor Ads

---



# **Ash Grove Cement Company**

*American made and American owned since 1882*

**Contact our Omaha sales office: 402.334.1401**

*[www.ashgrove.com](http://www.ashgrove.com)*

# EaglePave® IS Blended Cement

## Typical Data

### Physical Properties

	ASTM Specs	Reported
Specific Gravity	—	3.05
Blaine Fineness	—	433
Air in Mortar (%)	12% max	9
Autoclave Expansion (%)	0.80 max	0.02
Sulfur as Sulfide (%)	2.0 max	0.31

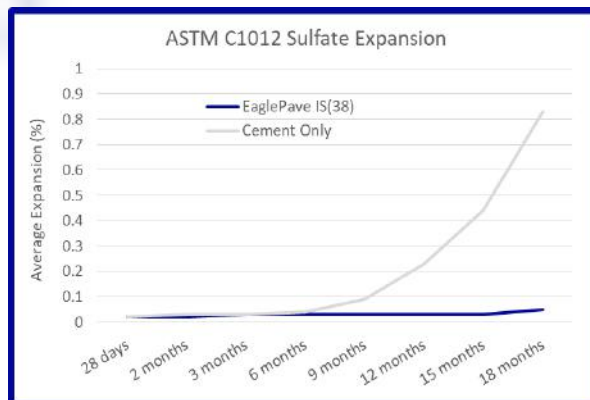
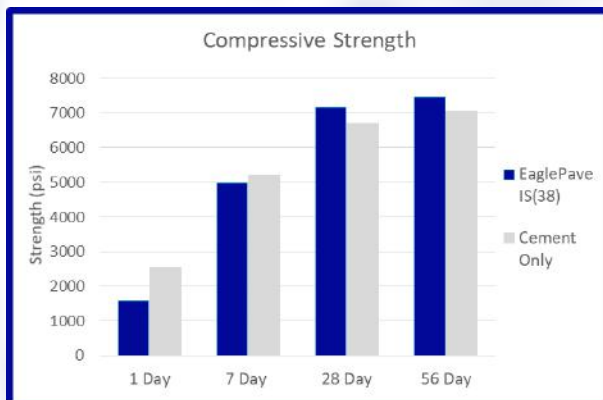
### Specifications

EaglePave IS meets all applicable ASTM C595 and AASHTO M240 specifications for Portland Blast Furnace Slag Cement IS(XX).

### State Approvals

EaglePave IS can be found on the Qualified Products List for the following states:

Nebraska DOT, Iowa DOT, Missouri DOT, and Kansas DOT.



### Enhanced Concrete Properties

	Cement Only	IS(38)
ASTM C1567		
16 days, % expansion	—	0.03-0.04
Surface Resistivity		
28 days, kΩ-cm	8.2	24.2
ASTM 1012		
18 months, % expansion	0.83	0.05

### For More Information

**Joel Sedlacek**, Territory Sales Manager

Phone: 402-305-3709

Email: [jsedlacek@centralplainscement.com](mailto:jsedlacek@centralplainscement.com)

**Megan Dangel, PE.**, Tech Services Engineer

Phone: 918-896-0598

Email: [mdangel@centralplainscement.com](mailto:mdangel@centralplainscement.com)



# Central Plains Cement Company

# EaglePave<sup>®</sup> IS Blended Cement

EaglePave IS is a blend of Ground Granulated Blast Furnace Slag (GGBFS) and Portland cement that is suitable for use in virtually all concrete and concrete product applications.

**Improved Strength** EaglePave IS surpasses the strength of Portland mixes at 28 days and beyond.

**Improved Workability** Concrete produced with EaglePave IS improves the workability and finishability of the concrete

**Reduced Permeability** EaglePave IS lowers the permeability of concrete; therefore, increasing the durability of the concrete.

**Reduced Alkali-Silica Reactivity (ASR)** EaglePave IS improves the resistance to ASR attack by decreasing concrete's permeability and preventing the migration of alkalis to reactive aggregates. Confirmation testing should be performed on a specific project basis.

**Improved Performance Through Ternary Blend** EaglePave IS can be combined with other SCMs, such as fly ash or silica fume, to maximize economics while providing improved performance over straight cement mixes.

**Improved Night Visibility & Increased Albedo** EaglePave IS's lighter color improves night visibility. It also reflects light, resulting in cooler surrounding temperatures, helping to reduce the urban heat island effect.

**Environmentally Friendly Alternative** EaglePave IS contains slag cement which defined by the USGBC is a pre-consumer recycled material. The overall CO2 footprint of a mix is also reduced compared to straight Portland cement, because of the increased cement/clinker ratio.

## Additional Properties of Fresh Concrete

**Water Reduction:** Concrete mixes using EaglePave IS generally require less water for a given slump

**Air Entrainment:** Concrete mixes using EaglePave IS contain no carbon residue that can effect air entrainment admixtures.

**Set Time:** Concrete mixes using EaglePave IS may have slightly extended set times, especially at higher slag cement replacement percentages

**Pumping:** Concrete mixes using EaglePave IS generally have improved pumpability.

**Heat of Hydration:** Concrete mixes using EaglePave IS generate less heat; therefore, reducing the possibility for thermal cracking.

## Additional Properties of Hardened Concrete

**Drying Shrinkage:** The use of EaglePave IS generally has no adverse effect on drying shrinkage.

**Resistance to Sulfate Attack:** Concrete mixes using EaglePave IS improve the concrete's resistance to sulfate attack when compared to straight Portland mixes.



**Central Plains  
Cement Company**



600 S. Cherry St., Ste. 1000  
Glendale CO 80246  
303-739-5900 Phone  
303-739-5940 Fax  
[www.gccusa.com](http://www.gccusa.com)



## GCC Philosophy:

**Mission:** To be the supplier of choice in cement, concrete and innovative solutions.

**2020 Vision:** Our customers recognize us as a business partner that generates the most value to their construction projects. We're a sustainable growing company, a great place to work and a solid investment for our shareholders.



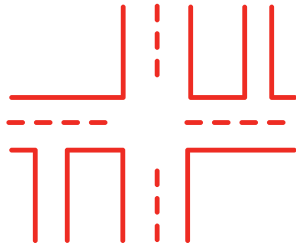




**JEO CONSULTING GROUP**

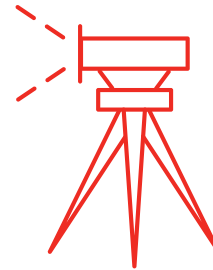
# Helping Communities Thrive Since 1937...

Engineering • Architecture • Surveying • Planning



## ...THROUGH TRANSPORTATION ENGINEERING SERVICES.

- Concrete and asphalt paving design
- Storm sewer drainage design
- Grading design
- Platting and right-of-way design
- Erosion control design
- Permitting
- Vehicular bridge design
- Pedestrian bridge design
- ADA sidewalk ramp design
- Inspection of existing bridges
- SWPP monitoring
- Design and construction surveying
- GIS/mapping
- Public involvement
- Environmental sciences/NEPA/permitting



## ...THROUGH SURVEYING.

- Boundary/land surveys
- Subdivisions
- Legal and easement descriptions
- Right-of-way and acquisition plats
- ALTA/NSPS surveys
- Topographic surveying and mapping
- River/stream profiles and cross sections
- Construction staking
- Horizontal and vertical control networks
- Aerial photo control
- GPS and geodetic surveys
- Hydraulic surveys
- Bathymetric surveys
- GIS mapping
- Elevation certificates, LOMAs, and LOMRs
- Utility Surveys
- Cadastral surveys

jeo.com | 800.723.8567



## ***PROVIDING VITAL TO LIFE ENGINEERING SERVICES***

Scan QR Code for  
Kirkham Michael on

**LinkedIn**



### **Proudly Serving Nebraska Since 1946:**

Roadway Engineering  
Bridge Engineering/Inspection  
Airport Planning/Design  
Construction Engineering  
Field Surveying

Traffic Engineering/Signal Services  
Transportation Planning  
Municipal Engineering  
NEPA and Environmental Planning  
GIS Services



**Corporate Office**

**12700 West Dodge Road | Omaha, Nebraska | 402-393-5630**

**[www.kirkham.com](http://www.kirkham.com)**



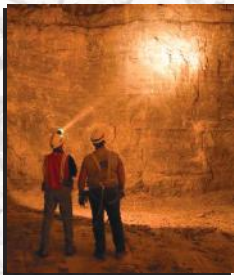


# NEBRASKA'S GOMACO DISTRIBUTORSHIP



**JINCO**

JINCOUSA.com  
402-560-1300



**Martin**  
Marietta

It's not just **what** we make;  
it's what we make **possible.**®

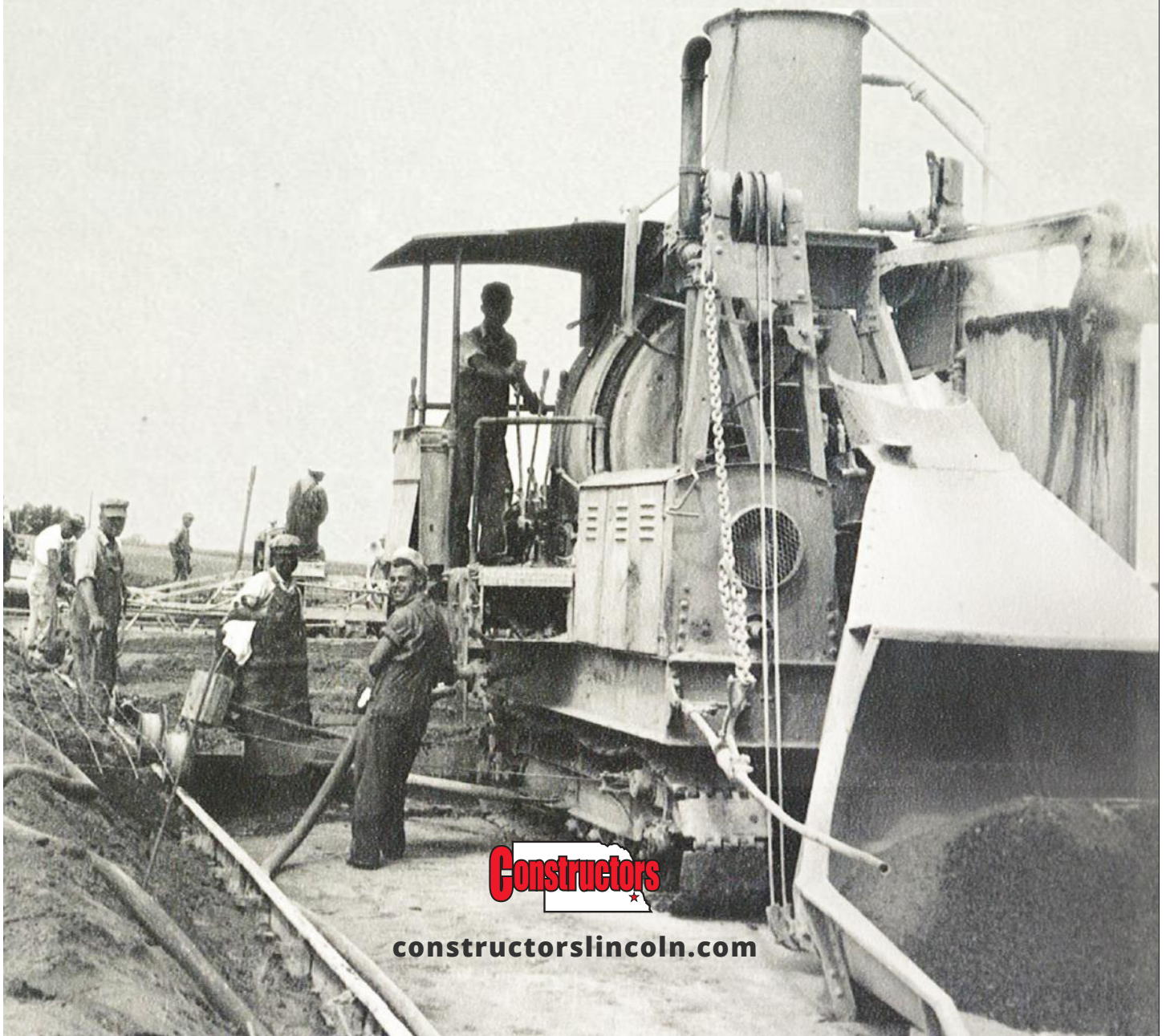
**Midwest Division**  
(515) 254-0030

Throughout Nebraska  
and across the Midwest.  
Building the world around you.

**NYSE:MLM**  
[www.martinmarietta.com](http://www.martinmarietta.com)



# BUILDING NEBRASKA SINCE 1908



**Constructors**

[constructorslincoln.com](http://constructorslincoln.com)





## *Over 100 Years*

As a leading general contractor, Koss is equipped and staffed to deliver virtually every surfacing product being designed today for streets, highways, industrial sites and airfields.



1800 NW Brickyard Road  
Topeka, Kansas 66618  
[www.kossconstruction.com](http://www.kossconstruction.com)



Tel: 785-228-2928  
Fax: 785-228-2927



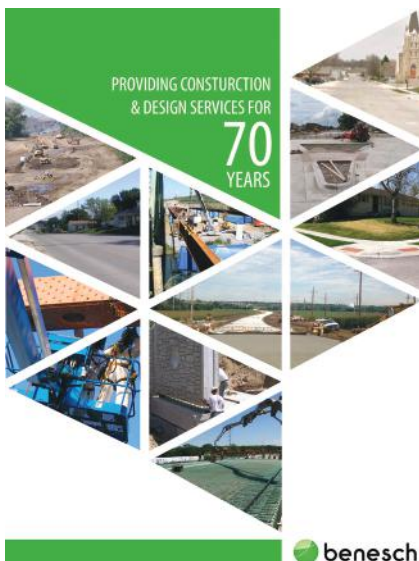
# ALFRED BENESCH & COMPANY

Alfred Benesch & Company is a multi-disciplined engineering and environmental services firm. Benesch is consistently ranked among the top 150 consulting engineering firms in the United States by Engineering News-Record. For over 70 years, we have provided design and construction engineering services for public agencies, including DOTs, Counties, Municipalities, Railroads, and Airports.

## **BENESCH SERVICES:**

- Design and Construction Engineering
- Constructability Review and Consultation
- Construction Observation
- Topographic and Construction Surveying
- Geotechnical Investigation
- Materials Testing
- Environmental Compliance Monitoring and Environmental Surveys
- Bridge and Pavement Condition Assessments
- Asset Management Planning
- ADA Compliance and Transition Planning

Benesch also provides contractor-specific services such as design-build, shoring tower design, temporary earth retention systems, demolition plans, schedule management, quantities takeoffs, cost management, structural engineering, and value engineering.







**E & A CONSULTING GROUP, INC.**

*Engineering Answers*



## **Stringless Paving in Tight Quarters**

Project: Fort Street, west of Highway 31

Clients: Douglas County/SID 561

Planning

Engineering

Environmental

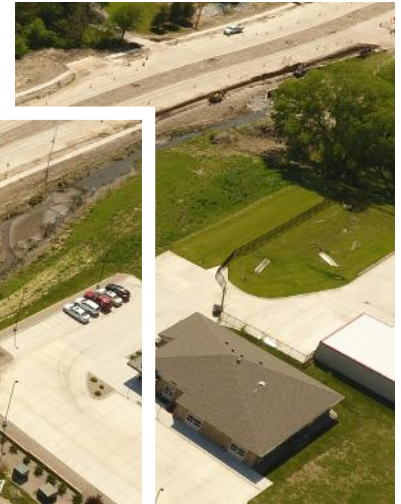
Field Services

Omaha & Lincoln  
eacg.com

# KEEPING COMMUNITIES *In Motion*



Pine Lake Road, 61st Street to Highway 2 | Lincoln, NE



Highway, Roadway,  
City Street & Country  
Road Design



Bridge Design  
& Inspections



Traffic Analysis  
& Studies



Hydraulic & Hydrologic  
Analysis



Bicycle & Trail Master  
Planning



Public Involvement

## SCHEMMER

*Design with Purpose. Build with Confidence.*

888.877.8127 | SCHEMMER.COM





# MID-STATE ENGINEERING & TESTING

## GEOTECHNICAL - CONSTRUCTION MATERIALS TESTING

Established in 1995 Mid-State Engineering & Testing, Inc. with offices in Kearney, Columbus and Norfolk, Nebraska specializes in geotechnical design and consulting, special inspections and materials testing services. Mid-State Engineering & Testing, Inc. materials laboratories are accredited by the American Association of State Highway Transportation Officials (AASHTO) Materials Reference Laboratory (AMRL) and the Concrete and Cement Reference Laboratory (CCRL) and Corp of Engineers. Mid-State Engineering & Testing, Inc. can assist in all your geotechnical needs all across Nebraska, Iowa, South Dakota and Kansas.

### GEOTECHNICAL ENGINEERING AND DESIGN

Our clients trust Mid-State Engineering and Testing, Inc. for geotechnical engineering services for virtually any project. Our team of skilled geotechnical professionals conduct geotechnical studies to understand the site geology, soil mechanics, hydraulics and strength of materials of site specific soils as they apply to our client's needs. Our experience in geotechnical engineering assures the most cost-effective yet reliable and sustainable solution. Our geotechnical services include:

- ✓ Drilling and Subsurface Exploration
- ✓ Foundation Design (Shallow, Intermediate and Deep)
- ✓ Floor Slab and Pavement Design
- ✓ Bearing Capacity Analysis
- ✓ Slope Stability Analysis
- ✓ Seismic Analysis



### DRILLING - GEOTECHNICAL AND ENVIRONMENTAL

Mid-State Engineering & Testing, Inc. is dedicated to providing our clients the best geotechnical borings, sampling and logging in the industry. Quality samples in a timely manner is paramount to our success. Our experienced drilling team and upgraded equipment is ready to serve you and your needs throughout the Midwest. With two (2) Mobil Auger Rigs available to utilize, we are ready to tackle all your subsurface needs.

- ✓ Geotechnical Subsurface Exploration
- ✓ Contract Drilling across the Midwest
- ✓ Monitor Well Installation and Development
- ✓ Well Rehabilitation and Abandonment
- ✓ Exploratory Borings and Continues Sampling
- ✓ Phase I Site Assessments

2106 E. Highway 30 Suite 1  
Kearney, NE 68847  
Office: 308-237-0187

402 31st Avenue  
Columbus, NE 68601  
Office: 402-562-7824

1403 Square Turn Blvd  
Norfolk, NE 68701  
Office: 402-379-2377

[www.midstateengineering.com](http://www.midstateengineering.com)

## SPECIAL INSPECTION AND MATERIALS TESTING



Mid-State Engineering & Testing, Inc. can take your project from start to finish with our complete special inspection and materials testing team in each of our offices. Our field team leaders combine for over 35 years of experience in the construction testing industry. Our teams take pride in expertise, knowledge and developing relationships with our clients. These core attributes set us apart from the larger testing firms.

Our laboratories, located in Kearney and Columbus are nationally accredited geotechnical and materials soils and concrete laboratories. We are accredited by AASHTO, Materials Reference Laboratory (AMRL) and the Concrete and Cement Reference Laboratory (CCRL) and US Army Corps of Engineers. Additionally, Mid-State Engineering & Testing Inc., undergoes annual inspection and accreditation by the Nebraska Department of Transportation (NDOT).

Mid-State Engineering & Testing, Inc. inspection and materials testing include, but not limited to the following:

- ✓ Soils and Aggregates (ASTM D1556, D6938, D2167)
- ✓ Concrete (ACI, NDOT Certified)
- ✓ Reinforcing Steel
- ✓ Concrete/Asphalt Coring
- ✓ Concrete Mix Design (including P-501 FAA requirements)
- ✓ Masonry
- ✓ Forensic Engineering (Concrete and soils)
- ✓ NRMCA Batch Plant Inspections
- ✓ Welded and Bolted Connections
- ✓ Anchor and Embed
- ✓ Post Tensioning
- ✓ Floor Flatness/Levelness (Dipstick 2277)
- ✓ GPR (Ground Penetrating Radar)
  - Rebar Location – Slabs, Walls, and Foundations
  - NDT Slab and Wall Thickness
  - Void Identification
- ✓ Drilled/Driven/RAP-GEO-Pier/Helical Pile Observation
- ✓ Concrete Maturity Installation/Monitoring
- ✓ Moisture Vapor/Relative Humidity Installation/Collection
- ✓ Thin Film Intumescent Materials Testing
- ✓ Thin Fireproofing Inspection
- ✓ SWPPP Inspection
- ✓ NDT Concrete Strength Testing
- ✓ Soil Percolation (NDEE Title 124)



2106 E. Highway 30 Suite 1  
Kearney, NE 68847  
Office: **308-237-0187**

402 31st Avenue  
Columbus, NE 68601  
Office: **402-562-7824**

1403 Square Turn Blvd  
Norfolk, NE 68701  
Office: **402-379-2377**

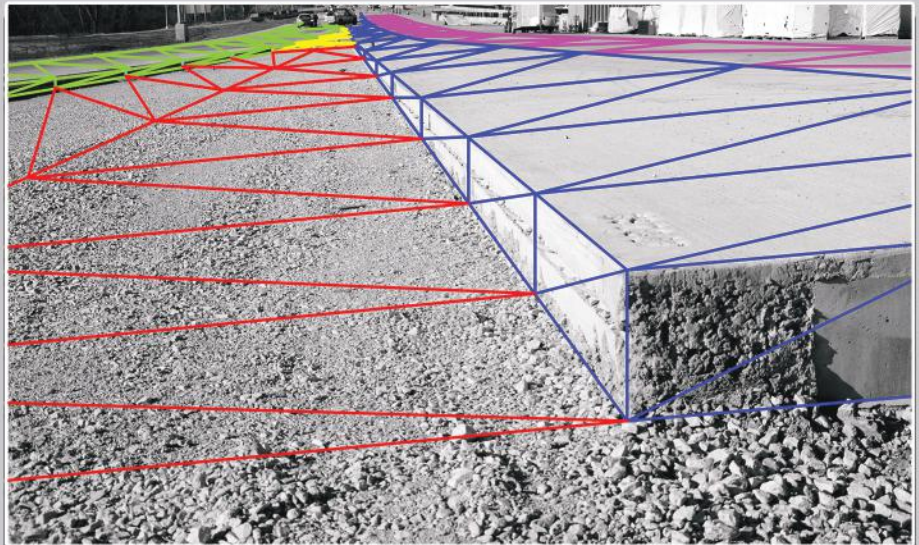
[www.midstateengineering.com](http://www.midstateengineering.com)



**Est. 1980**

**R.W. Engineering & Surveying, Inc.**, is in the business of building high-quality 3D models, compatible with all manufacturers of 3D systems, including: Trimble, Topcon, Leica, and others.

- **3D Machine Controlled Modeling**
- **Stringless Paving Models**
- **Aerial Mapping and Quantities**
- **Construction Surveying**



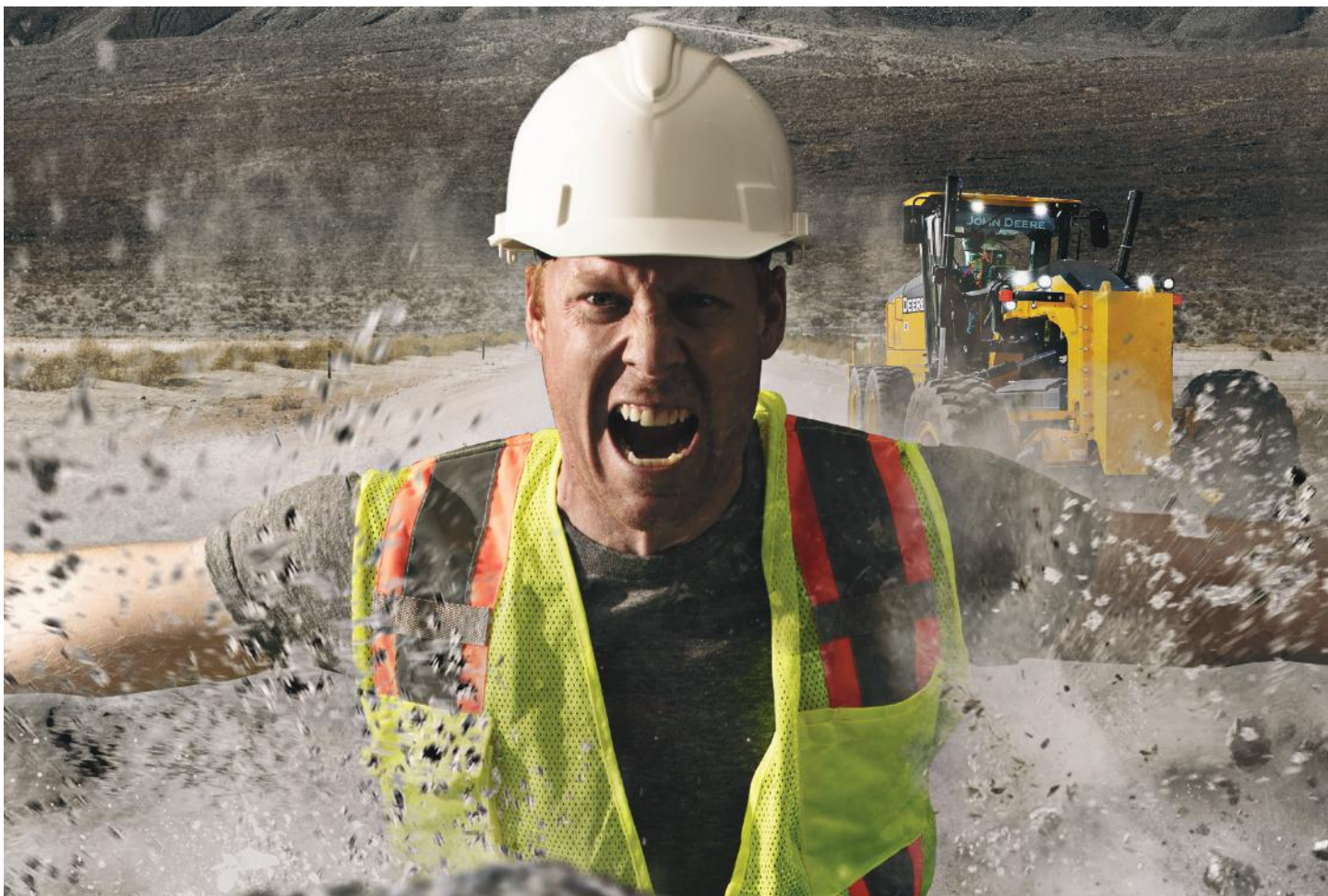
**Need assistance with the productivity of your paving and grading crews?**

We offer training classes on all aspects of the paving and grading process (i.e. set-up of equipment, calibration of the site, loading of files to your machines, and more).

Lincoln • Omaha • Council Bluffs

[RWmidwest.com](http://RWmidwest.com)





**IN YOUR WORLD,  
THE POWER OF CHOICE MAKES THE GRADE.**

You know what you want in a G-Series Motor Grader, so we make it possible. Start with your choice of eight grader models, including the new tandem 620G/GP and six-wheel-drive 622G/GP that use 10-percent less fuel than our larger 670G/GP and 672G/GP models. Then choose from our new dual joystick, electrohydraulic fingertip, or traditional mechanical controls — all with a steering wheel. The icing on the cake? Horsepowers that are tops in their respective model categories. Choose your model. Choose your controls. Then **Run Your World**. Call or visit us today.



**JOHN DEERE**

**MURPHY**  
TRACTOR & EQUIPMENT CO.

**Gering, NE**  
(308) 436-2177

**Grand Island, NE**  
(308) 381-0741

**Lincoln, NE**  
(402) 467-1300

**North Platte, NE**  
(308) 534-7020

**Omaha, NE**  
(402) 894-1899

**Sioux City, IA**  
(712) 252-2753

[murphytractor.com](http://murphytractor.com)



- PLAN
- SURVEY
- ANALYZE
- DESIGN

*Since 1974*

### Our Process

Our comprehensive approach to an engineering project includes four critical steps: Plan - Survey - Analyze - Design.

### People

Our engineers and technical experts are experienced and well trained. Their expertise and diligence ensures each project is thoughtfully planned and flawlessly executed.

### Contact Us

Speece Lewis Engineers  
Phone: 402-483-5466  
Fax: 402-483-1722  
[info@speecelewis.com](mailto:info@speecelewis.com)

### Learn More

[www.speecelewis.com](http://www.speecelewis.com)





# Improving Our World One Project at a Time.



**olsson**

**Same great company. Just a shorter name.** We're Olsson, (formerly Olsson Associates), a nationally recognized engineering and design firm that adds purpose to every project we complete.

# Thiele Geotech Inc



*When You Need Confidence...*

**Providing project support throughout the Midwest.**



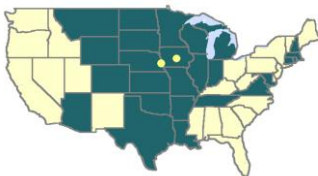
AASHTO Accredited



US Army Corps  
of Engineers  
Engineer Research and  
Development Center

USACE Validated

- Geotechnical Engineering
- Construction Materials Testing
- Geophysical Engineering
- Environmental Services
- Earth Retaining Structure Design



Office Locations:

**Omaha**  
402.556.2171

**Des Moines**  
515.986.3013



[www.thielegeotech.com](http://www.thielegeotech.com)

---

# Conference Evaluation

---

This page was left intentionally blank.



# EVALUATION

Nebraska Concrete Paving Conference  
January 18-19, 2022 Cornhusker Marriott Hotel Lincoln, NE

**ATTENDEES:** On a scale of 1 to 5 with 5 being the best, please indicate / rank the following:

## 1. OVERALL EVENT

Rating of conference as a whole

1                      2                      3                      4                      5

Length of conference

1                      2                      3                      4                      5

Conference facilities

1                      2                      3                      4                      5

Overnight accommodations

1                      2                      3                      4                      5

Quality, Quantity and Selection of refreshments

1                      2                      3                      4                      5

Quality of meals

1                      2                      3                      4                      5

## CONTENT

Relevance of topics

1                      2                      3                      4                      5

Knowledge of speakers

1                      2                      3                      4                      5

Presentation skills of speakers

1                      2                      3                      4                      5

Length of individual sessions

1                      2                      3                      4                      5

Number and frequency of breaks

1                      2                      3                      4                      5

TEAR HERE

This page was left intentionally blank.

Continued -->

# EVALUATION

## SESSIONS YOU ATTENDED

Exhibitor's presentations

	1	2	3	4	5
Poor					Excellent

John Selmer's Presentation: State of the State

	1	2	3	4	5
Poor					Excellent

Joe Werning's Presentation: Update on FHWA Programs

	1	2	3	4	5
Poor					Excellent

Moe Jamshidi's Presentation: Update on Expressways - Statewide

	1	2	3	4	5
Poor					Excellent

Ann Rickart's Presentation: NDOT Airport Activities

	1	2	3	4	5
Poor					Excellent

Curt Muetting: Update on Lincoln's South Beltway

	1	2	3	4	5
Poor					Excellent

Megan Dangel: Green Management

	1	2	3	4	5
Poor					Excellent

Luke Ritter: Precast Box Culverts

	1	2	3	4	5
Poor					Excellent

Tony Egelhoff: Update on Connect Sarpy

	1	2	3	4	5
Poor					Excellent

Fouad Jaber: Ultra-High Performance Concrete for Bridges

	1	2	3	4	5
Poor					Excellent

Kent Miller: Aerial Thermographic for Bridge Decks

	1	2	3	4	5
Poor					Excellent

Mick Syslo / Mike Steffensmeier: Restricted Crossing U-Turns

	1	2	3	4	5
Poor					Excellent

Todd W. Weidemann: Ethics for Engineers

	1	2	3	4	5
Poor					Excellent

Continued -->

# EVALUATION

Tim Hostetler: South Dakota State CIM Program

1 2 3 4 5  
Poor Excellent

Andy Dearmont: QC/QC for PCCP

1 2 3 4 5  
Poor Excellent

Bruce Barrett: Precast in Pavements

1 2 3 4 5  
Poor Excellent

Gordon Smith: Concrete Paving Tech Center

1 2 3 4 5  
Poor Excellent

Terry Harris: Update on Admixtures and Sequencing

1 2 3 4 5  
Poor Excellent

Jon Fischer: Fiberglass Rebar

1 2 3 4 5  
Poor Excellent

Brandon Williams: Carbon Cure

1 2 3 4 5  
Poor

Dr. Jiong Hu: Recycled Concrete Aggregate for Concrete Application

1 2 3 4 5  
Poor Excellent

Dave Hansen: Evaluating Deicing Products During Winter Weather

1 2 3 4 5  
Poor Excellent

Andrew Heuermann: FHWA Mobile Concrete Testing Center

1 2 3 4 5  
Poor Excellent

2. How many external conferences/seminars do you attend, on average, in a year?

1-5 6-10 over 10

3. How did you learn of the Concrete Paving Conference?

NCPA Newsletter

NCPA postcard or flyer

NCPA Registration form

League of Municipalities Newsletter

NACO Website

Internet/Website

Colleague/friend

Other – explain \_\_\_\_\_

Continued -->

# EVALUATION

4. Please specify your main reason for attending this conference

- Content
- Speakers
- Networking
- Personal growth/development
- Other – explain \_\_\_\_\_

5. Did the conference fulfill your reason for attending?

- Yes, absolutely
- Yes, but not to the full extent possible
- No

6. Would you like to see this conference continue in the near future?

- Yes, absolutely
- No – explain

---

---

7. What changes/improvements would you like to see made in future conferences?

- \_\_\_\_\_
- \_\_\_\_\_
- \_\_\_\_\_

8. Suggest any topics you would like to see covered in next year’s sessions:

- \_\_\_\_\_
- \_\_\_\_\_
- \_\_\_\_\_

9. List any other suggestions/comments you have:

- \_\_\_\_\_
- \_\_\_\_\_
- \_\_\_\_\_

Thank you for your time in completing this evaluation.     - Bruce

---

# PDH Forms

---

This page was left intentionally blank.



# PDH Form

## Engineers

TEAR HERE

<b>NCPA Concrete Paving Workshop PDH CERTIFICATION for Engineers</b>			
Workshop dates: January 18-19, 2022 At the Cornhusker Marriott, Lincoln, Ne.	START	MINUTES	MINUTES
<b>TOPIC/DESCRIPTION</b>	<b>TIME</b>	<b>TALK</b>	<b>ATTENDED</b>
<b>FIRST DAY'S PROGRAM</b>			
Welcome/Introductions/housekeeping: Bruce Grupe	9:00	10	
Exhibitor Presentations	9:10	20	
John Selmer, NDOT: State of the State	9:35	30	
Joe Werning, FHWA: Update on FHWA Activities and Programs	10:30	30	
Moe Jamshidi, Update on Expressways - Statewide	11:00	30	
Ann Rickart, Ne. Dept. of Aeronautics: Upcoming Airport Projects in 2018	11:30	30	
<b>Lunch and Awards Banquet</b>	Noon		
<b>Breakout sessions 1,2,&amp; 3</b>	see below		
<b>Breakout sessions 1,2 ,&amp; 3 Continued</b>	see below		
<b>SECOND DAY'S PROGRAM</b>			
Todd Clock: Martin Marietta mine update	8:00	45	
Jesse Ridder: Presentation on flood projects completed	8:45	45	
Steve McCullough: South Beltway Update	10:00	45	
Bryan Beck: History GOMACO	10:45	45	
<b>End of the Workshop</b>	Noon		
<b>DETAILS OF BREAKOUT SESSIONS</b>			
<b>Break out session 1,</b>			
Ultra - High Performance Concrete for Bridges	1:30	30	
Aerial Thermographic for Bridge Decks	2:00	30	
Restricted Crossing U-Turns RUT - Panel	2:30	30	
Ethics for Engineers	3:30	60	
<b>Breakout Session 2,</b>			
South Dakota State CIM Program	1:30	30	
QA/QC for PCCP - Update after 1st Year	2:00	30	
Precast in Pavements	2:30	30	
Gordon Smith Talk	3:30	30	
Update on Admixtures and Sequencing	4:00	30	
<b>Breakout Session 3,</b>			
Fiberglass Rebar	1:30	30	
Carbon Cure	2:00	30	
Recycled Concrete Aggregate for Concrete Application	2:30	30	
Evaluating Deicing Products During Winter Weather Events	3:30	30	
FHWA - Mobile Research Truck	4:00	30	
	Minutes >	480	
	Hours >	8	
<b>Total Minutes Attended &gt;</b>			
<b>Total Hours Attended &gt;</b>			

### Engineer's PDH Certification

This document is to certify that \_\_\_\_\_ attended the above program presented by the Nebraska Concrete Paving Association. This Workshop is estimated to provide 8 Professional Development Hours, or 0.8 Continuing Education Units. However, the Board of Engineers and Architects has final authority with respect to approval or credit.

Bruce Grupe, P.E.  
Director of NCPA

Nebraska Concrete Paving Association  
5700 Seward Ave, Ste B, Lincoln, Ne. 68507

402.499.7105

This page was left intentionally blank.

# PDH Form

## Superintendents

<b>NCPA Concrete Paving Workshop PDH CERTIFICATION for Superintendents</b>			
Workshop dates: January 18-19, 2022 At the Cornhusker Marriott, Lincoln, Ne.	START	MINUTES	MINUTES
<b>TOPIC/DESCRIPTION</b>	<b>TIME</b>	<b>TALK</b>	<b>ATTENDED</b>
<b>FIRST DAY'S PROGRAM</b>			
Welcome/Introductions/housekeeping: Bruce Grupe	9:00	10	
Exhibitor Presentations	9:10	20	
John Selmer, NDOT: State of the State	9:35	30	
Joe Werning, FHWA: Update on FHWA Activities and Programs	10:30	30	
Moe Jamshidi, Update on Expressways - Statewide	11:00	30	
Ann Rickart, Ne. Dept. of Aeronautics: Upcoming Airport Projects in 2018	11:30	30	
<b>Lunch and Awards Banquet</b>	Noon		
<b>Breakout sessions 1,2,&amp; 3</b>	see below		
<b>Breakout sessions 1,2 ,&amp; 3 Continued</b>	see below		
<b>SECOND DAY'S PROGRAM</b>			
Todd Clock: Martin Marietta mine update	8:00	45	
Jesse Ridder: Presentation on flood projects completed	8:45	45	
Steve McCullough: South Beltway Update	10:00	45	
Bryan Beck: History GOMACO	10:45	45	
<b>End of the Workshop</b>	Noon		
<b>DETAILS OF BREAKOUT SESSIONS</b>			
<b>Break out session 1,</b>			
Ultra - High Performance Concrete for Bridges	1:30	30	
Aerial Thermographic for Bridge Decks	2:00	30	
Restricted Crossing U-Turns RUT - Panel	2:30	30	
Ethics for Engineers	3:30	60	
<b>Breakout Session 2,</b>			
South Dakota State CIM Program	1:30	30	
QA/QC for PCCP - Update after 1st Year	2:00	30	
Precast in Pavements	2:30	30	
Gordon Smith Talk	3:30	30	
Update on Admixtures and Sequencing	4:00	30	
<b>Breakout Session 3,</b>			
Fiberglass Rebar	1:30	30	
Carbon Cure	2:00	30	
Recycled Concrete Aggregate for Concrete Application	2:30	30	
Evaluating Deicing Products During Winter Weather Events	3:30	30	
FHWA - Mobile Research Truck	4:00	30	
	Minutes >	480	
	Hours >	8	
	<b>Total Minutes Attended &gt;</b>		
	<b>Total Hours Attended &gt;</b>		

### PDH Certification

This document is to certify that \_\_\_\_\_ attended the above program presented by the Nebraska Concrete Paving Association. The Board of Examiners for County Highway and City Street Superintendents approved this workshop for 8 Professional Dev. Hours for Re-Certification as a County Highway or City Street Superintendent.

Bruce Grupe, P.E.  
Director of NCPA

Nebraska Concrete Paving Association  
5700 Seward Ave, Ste B, Lincoln, Ne. 68507

402.499.7105



This page was left intentionally blank.

---

This image shows a blank sheet of white paper with horizontal ruling lines. The lines are evenly spaced and run across the width of the page. There are no margins, text, or other markings on the paper.





**Nebraska Concrete Paving Association**  
**5700 Seward Ave., Ste. B.**  
**Lincoln, NE 68507**  
**(402) 499-7105 | [www.nebrconc.org](http://www.nebrconc.org)**