

promise686

2025 IMPACT REPORT

GOD SETS THE LONELY IN FAMILIES THROUGH

*Any Church.
Anywhere.*



Dear Friends,

At Promise686, we believe any church, anywhere can be the answer for a vulnerable child. While 2025 was a year of transition, it was defined by a strategic shift from maintaining the status quo to building a more scalable future.

To reach our next level of impact, we chose to evolve. While this pivot led to a temporary, intentional settling in our metrics—averaging around 2,000 churches—it allowed us to prioritize **efficiency and depth** over surface-level numbers.

MYFAM: THE ULTIMATE GRASSROOTS ORGANIZER

The centerpiece of this new era is the evolution of the myFAM app. By leveraging advanced analytics, we are empowering the Church to be the ultimate grassroots organizer. This data-driven approach ensures no child slips through the cracks and every resource is used for maximum kingdom impact.

We are already seeing the fruit: pastors have a clearer view of transformation within their pews, and discipleship groups are witnessing firsthand how lives are being restored.

LOOKING AHEAD

Promise686 wants to express our deepest gratitude to Tim Rider for years of vision and service as our Board Chair. We look forward to Keith Style's leadership of the Board as Promise prepares for its next chapter.

We have spent this year laying the tracks. We are now set up for a level of impact that is more sustainable and scalable than ever before. This is a big deal. We are not simply hoping for change; we are measuring it, refining it, and expanding it.

Thank you for standing with us during this season of rebuilding. Because of your support, we are ready to sprint into 2026, ensuring every church is equipped to say "yes" to a child in need.

With gratitude,



Andy Cook
President & CEO

Board of Directors

Keith Style, Chairman
Principal, The Presidio Group

Andy Cook
President & CEO, Promise686

Patrick Moody, Secretary
Commercial Banking Lender, Wells Fargo

Jim Allen
SVP, Corporate Partnerships, Atlanta Braves

Matthew Cathy
Owner, Clayton Fixture

Léonce Crump
Senior Pastor, Renovation Church

Brett Lane
President & CEO, Encore Advisors

Jody McNatt
Writer, Speaker, & Educator

Callie Murray
Co-founder, Same Page HR



TABLE OF CONTENTS

Message from the President & CEO	2
Ministry Overview	4
Technology	6
Content	8
Coaching	10
Lives Changed	12
Financials	18
Join Us	19

Board Leadership Transition

There are no words to adequately show our gratitude to Amy and Tim Rider for their vision, obedience, and wisdom in founding and growing the ministry of Promise686. After 17 years of faithful leadership, Tim has rolled off the Board. Amy and Tim will remain integrally involved as Promise supporters.

Tim sums up their Promise journey by saying, “God has continually expanded our vision and capabilities in ways we could never have imagined, touching countless families along the way whose full impact we’ll only fully appreciate in heaven. While our history has been faith-building and awe-inspiring, I firmly believe Promise686’s best days are still ahead. God has so much more in store, and I’m excited to see His continued hand at work and His blessings on the work you do every day.”

Keith Style, former Vice-Chair, has assumed guidance of the Promise Board as Chair. Keith is honored and humbled to assume this role, stating, “I stand on the shoulders of the incredible Amy and Tim Rider. We are so grateful for what God has done through them. I can’t wait to see how the Lord is going to do even more transformative work through Promise in the years ahead.”

OUR VISION

To fulfill God’s promise “to set the lonely in families” (Psalm 68:6)

OUR MISSION

To mobilize church communities to care for vulnerable children

A woman with curly hair is holding a baby in an orange shirt and jeans. They are outdoors with green trees in the background. The woman is looking up at the baby with a smile.

Any Church. Anywhere.

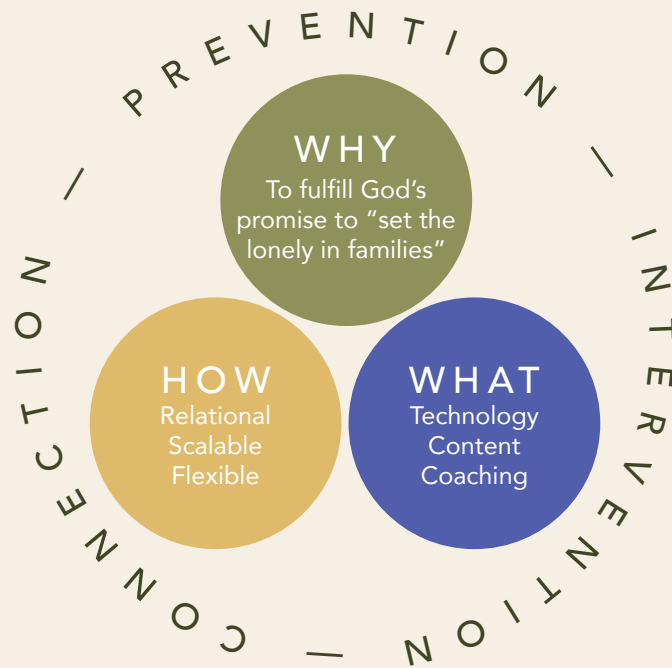
We believe the Church is called to care for vulnerable children.

Since Promise686 was founded in 2009, we've been chasing one ambitious vision: ending the child welfare crisis.

Through **technology**, **content**, and **coaching**, Promise686 is equipping churches across America to make a difference in the lives of vulnerable children and families in their local communities.

Family Advocacy Ministries (FAMs) allow us to provide the resources needed to empower churches to easily set up volunteer-led ministries who go out and actively support vulnerable children and families in practical ways. Our solutions provide churches with flexible, scalable, and evidence-based solutions that transform the lives of children and families caught in the child welfare system.

The model of Promise686 is designed to unify churches everywhere, ensuring any church, in any community, can effectively intervene and create lasting transformation, rewriting the stories of those stuck in an overburdened child welfare system.



2025 KEY METRICS



*Economic impact is based upon the value that various FAM activities bring to children, through service hours, in-kind gifts, grants, and more. Think of it as the total value we're able to provide to vulnerable children.

Check Out Our Redesigned Website!

We are excited to share the launch of our redesigned website – promise686.org! As a nonprofit dedicated to helping vulnerable children, we want our "online home" to clearly reflect our mission and make it easy for people to connect, learn, and get involved. The site also features the first-ever Promise686 Store, offering family-centric resources and quality apparel. It's also available in Spanish!



LIFE-CHANGING *Technology*



Scaling Compassion: Redefining Care Through the myFAM App

Transforming support for families in crisis requires a digital solution that meets real needs through lasting relationships. MyFAM, created by Promise686, is doing exactly that by empowering churches to provide simple, effective, and flexible care coordination and real impact through technology.

Building on the proven success of Promise Serves, we are migrating our national network of thousands of churches to myFAM, our next-generation platform designed for enhanced scalability and impact. Our teams have been working aggressively to quickly enable our existing base of users to the myFAM platform through a smooth, simple process.

While Promise Serves established a solid foundation for supporting vulnerable children and families, myFAM represents a significant evolution — offering a more robust, intuitive environment for those serving families in need. This transition ensures we are positioned to serve more families with greater efficiency and precision.

The platform is designed to:

- **Coordinate Care** through a single hub for family support.
- **Fuel Relationship** by empowering volunteers through church-specific DNA.
- **Share Best Practices** with tailored training for every stakeholder.
- **Measure What Matters** using data-driven insights and real-time dashboards.

By leveraging this innovative technology, Promise686 is leading the way in scaling lasting, community-driven support for vulnerable families across the nation. We continue to invite technology in a meaningful way to accelerate our impact, resulting in many more stories—all for God's glory and making a mark on the world.



Welcome to Our New Chief Product & Technology Officer

Promise686 is proud to welcome Julio Vieira as Chief Product and Technology Officer. Julio comes with decades of experience in the tech industry, ranging from product innovation to cybersecurity to large-scale technology operations. He is committed to collaboration and consistent open communication, seeing these elements not only as values but as drivers that make a team unified, resilient, and ready to take on any challenge. Julio says, "During the interview process, I became deeply engaged with the work of Promise. Seeing the strong alignment of every person with the Promise686 mission was incredibly inspiring. I am genuinely excited and happy to be joining the Promise team." Needless to say, Julio is excited to leverage technology to support families and advance the myFAM platform to its next level of growth, broadening our impact within thousands of communities.



EMPOWERING, DYNAMIC

Content



As a thought leader in the child welfare space, Promise686 equips and educates individuals and organizations with content that is informational, engaging, and thought-provoking. We create relevant and engaging resources and curriculum that make it simple for church volunteers to engage with vulnerable children and families.

Expanding the Circle of Care: *A Place to Belong for Teens*

In 2025, Promise686 deepened its commitment to adolescent care with the release of *A Place to Belong for Teens*. Recognizing that teenagers who have experienced trauma require specialized, nuanced support, we developed this comprehensive video resource to bridge the gap in ministry environments.

This two-part, 35-minute curriculum—complete with actionable handouts—equips church leaders and foster/adoptive families with the specific tools needed to cultivate authentic belonging. By focusing on trauma-informed responses, we are ensuring that as children grow into their teenage years, their support systems grow with them.

¡Buenas noticias!

Promise686 training is now available in Spanish! We're thrilled to offer our church-based support training in a way that's more accessible to Spanish-speaking communities.

This means more families supported, more volunteers equipped, and more churches mobilized to care for vulnerable children. We believe every community deserves the tools to make a difference. And now, even more of them can.

Unplanned Doesn't Mean Unsupported

"Embrace" is our newest care community model—designed to surround families navigating unplanned pregnancies with practical help, emotional support, and unwavering compassion.

Through trained church volunteers, Embrace Care Communities walk alongside moms and dads with meals, transportation, prayer, mentorship, and more. It's not charity—it's family, showing up when it matters most. Because every life is valuable. Every story matters. And no one should walk this road alone.

CHECK OUT THE PROMISE STORE



We are proud to introduce the Promise Store—now on our refreshed website! There you'll discover items to equip, educate, and bring families closer together while creating understanding and empathy. You'll also find some cool and comfy apparel to spread the Promise message "to set the lonely in families." Be sure to check out these awesome resources at promise686.org/promise-store.



FAM Talk

FAM Talk brings families together—one question at a time! Whether it's mealtime, road trips, or game night, FAM Talk helps families connect, sparking meaningful conversation through interesting questions.



Foster for Realz

Foster for Realz is a fun, laugh-out-loud card game designed for foster and adoptive parents, families, and groups of all ages. With a style similar to *Apples to Apples*, this game adds a foster care twist that brings both humor and connection to the table.



Simply One

The Simply One Card Game is an interactive learning tool that helps players of all ages understand the impact of Adverse Childhood Experiences (ACEs) and the importance of resilience. The game tells a story of hardship and hope, showing that while the cards a child is dealt cannot be changed, one caring adult can make all the difference.

Untangling Hope wins the Christopher Award



Our own Johnna Stein, VP of Creative Resources, won a 2025 Christopher Award for her book *Untangling Hope*. It is one of 12 winning books for adults and young people as the Christopher Awards program marks its 76th year.

The Christopher Awards celebrate authors, illustrators, writers, producers, and directors whose work affirms the highest values of the human spirit and reflects the Christopher motto, "It's better to light one candle than to curse the darkness."



COLLABORATIVE, TRANSFORMATIONAL

Coaching

At Promise686, we walk hand-in-hand with churches and organizations to help them launch and nurture Family Advocacy Ministries (FAMs). Our approach is deeply personal; we focus on intentional training and equipping that leads to lasting restoration for families, communities, and churches.

In 2025, FAMs in 2,100 churches across the country worked to impact the lives of nearly 20,000 children. This mission was fueled by almost 22,000 volunteers in 42 churches who tackled the child welfare crisis head-on ... resulting in a monumental \$21 million of economic value provided to communities nationwide!

Did You Know...

That 91% of Promise's impact comes through trusted non-profit partners in communities across the country?

Promise686 works with organizations nationwide that are well-rooted and connected with churches in their own communities. We call these partners "Implementers." The majority of our impact comes through this smart, scalable model of working with these partners.

As we coach Implementers, they invest and empower churches in their unique environments with a customized, personal approach. As we serve a wide diversity of churches spanning Hawaii to Maine, the model of Promise686 continues to prove immensely **scalable** and **flexible**.



Connecting Leaders Across the Nation

This past year, Promise686 created several spaces for leaders nationwide to gain insight from one another and leverage their wisdom in caring for vulnerable children. We had two eight week long cohorts that impacted 16 organization leaders. We also had a virtual leadership gathering three times last year, ranging from 25 to 50 in each meeting. At the annual Christian Alliance for Orphans (CAFO) conference, Promise hosted 130 network partners for peer-to-peer sharpening. All of these "iron sharpening iron" gatherings continue to bridge geographic gaps and enable leaders to exchange frontline insights and proven strategies to ensure that every child has a family.

Tailored Coaching Guidance

Acting as dedicated consultants, Promise686 FAM Coaches provide ongoing guidance to help churches navigate the complexities of their community's unique needs. These regular touchpoints are essential in equipping them with the tools and confidence needed to sustain and expand their local church mobilization efforts.

The Roadmap to Impact: The Promise Playbook

Promise686 uses a comprehensive playbook to help any church, anywhere recruit, train, and support dedicated volunteer teams. This strategic suite of guides and video training provides a clear roadmap and personalized onboarding. Our goal is to move churches from "wanting to help" to "actively serving," ensuring they have the tools and confidence to sustain a thriving Family Advocacy Ministry.

Impact Through Leadership

The Executive Gathering is more than a meeting; it is a time of renewal for those on the front lines of the child welfare crisis. By hosting leaders from non-profit organizations across the nation, Promise686 fosters a community of encouragement and shared wisdom. These executives depart equipped with new strategies and a shared commitment to multiplying care for vulnerable children in every corner of the country.

Lives Changed

It is impossible to chronicle the number of lives impacted through the work of Promise686. Our smart, multiplicative model allows for exponential impact across the country ... from what we can tell, almost 20,000 lives were impacted in 2025! All of this is done at a grassroots level through the efforts of the local church community. It's sustainable and affordable because the load is carried by so many, yet the efforts change the trajectory of families, one story at a time.

While we are in 42 states, we have boots on the ground in strategic locations around the U.S., such as Utah, New York, and Georgia. Enjoy just a few of stories here that illustrate the depth and the breadth of the work of Promise and how God is using this ministry nationwide.



UTAH

From Uncertainty to Family: Zach and Zoey's Story

In a recent milestone for a FAM in Utah, one of our partner churches launched its very first Care Community. The impact was immediate, deeply personal, and life-changing for a new father named Zach.

The journey began when one of the church's FAM Advocates, who is also a foster parent, received an emergency call for a newborn girl named Zoey. While Zoey was placed safely in foster care, her father, Zach, was navigating a whirlwind of emotions. He felt overwhelmed and unsure if he had what it took to be a parent.

Everything changed during the first visit. The moment Zach held Zoey in his arms, his uncertainty vanished. He knew he wanted to be her father.

BRIDGING THE GAP TO REUNIFICATION

The path to reunification came with significant hurdles. To bring Zoey home, Zach's parenting plan required him to move from his one-bedroom apartment into a two-bedroom home. Understanding the urgency, the church stepped in to help Zach secure the right apartment and outfitted it with a crib and essential baby supplies.

Once Zach gained custody, the church didn't stop there. They asked if he would be open to a Care Community—a team of 6–8 volunteers committed to walking alongside him for a year. Zach enthusiastically said "Yes."

A CIRCLE OF SUPPORT

As a brand-new single parent, Zach received consistent support through:

- **Weekly Meals:** Relieving the pressure of daily chores.
- **Babysitting:** Providing much-needed breaks and practical help.
- **Mentorship:** Guiding him through the challenges of first-time parenthood.

Zach didn't just receive support; he found community. He began attending the church regularly, weaving his life into the congregation that had surrounded him with such intentional care.

A MEANINGFUL SEND-OFF

This past summer, Zach accepted a job in Ohio to be closer to his extended family. Before he and Zoey moved, his Care Community hosted a send-off celebration. It was a bittersweet moment, but Zach's words at the party captured the essence of our mission:

"I would never have been able to handle parenting and life this past year without this church's amazing support."

We are so proud of Zach and Zoey, and we are grateful to the Utah church for proving that when we wrap around a family, we don't just provide "help;" we provide a future.

* Names changed.

NEW YORK

From a Studio Apartment to a Sanctuary of Hope

In a small studio apartment, a single father was facing an unimaginable battle. Struggling with fatal kidney disease, diabetes (that led to limb loss and partial blindness), and heart disease, he was simultaneously navigating the weight of raising his 12-year-old son and 13-year-old daughter alone.

When Promise686 partner Springs of Love first met this family, the scarcity of their surroundings was heartbreaking. The entire family shared a single twin bed. In a moving display of sacrifice, the father tried to give the bed to his daughter, but she refused to let her father sleep on the floor. With only one folding table and chair to share, the basic dignity of a family meal or a place to study was nearly impossible.

A COMMUNITY RISES UP

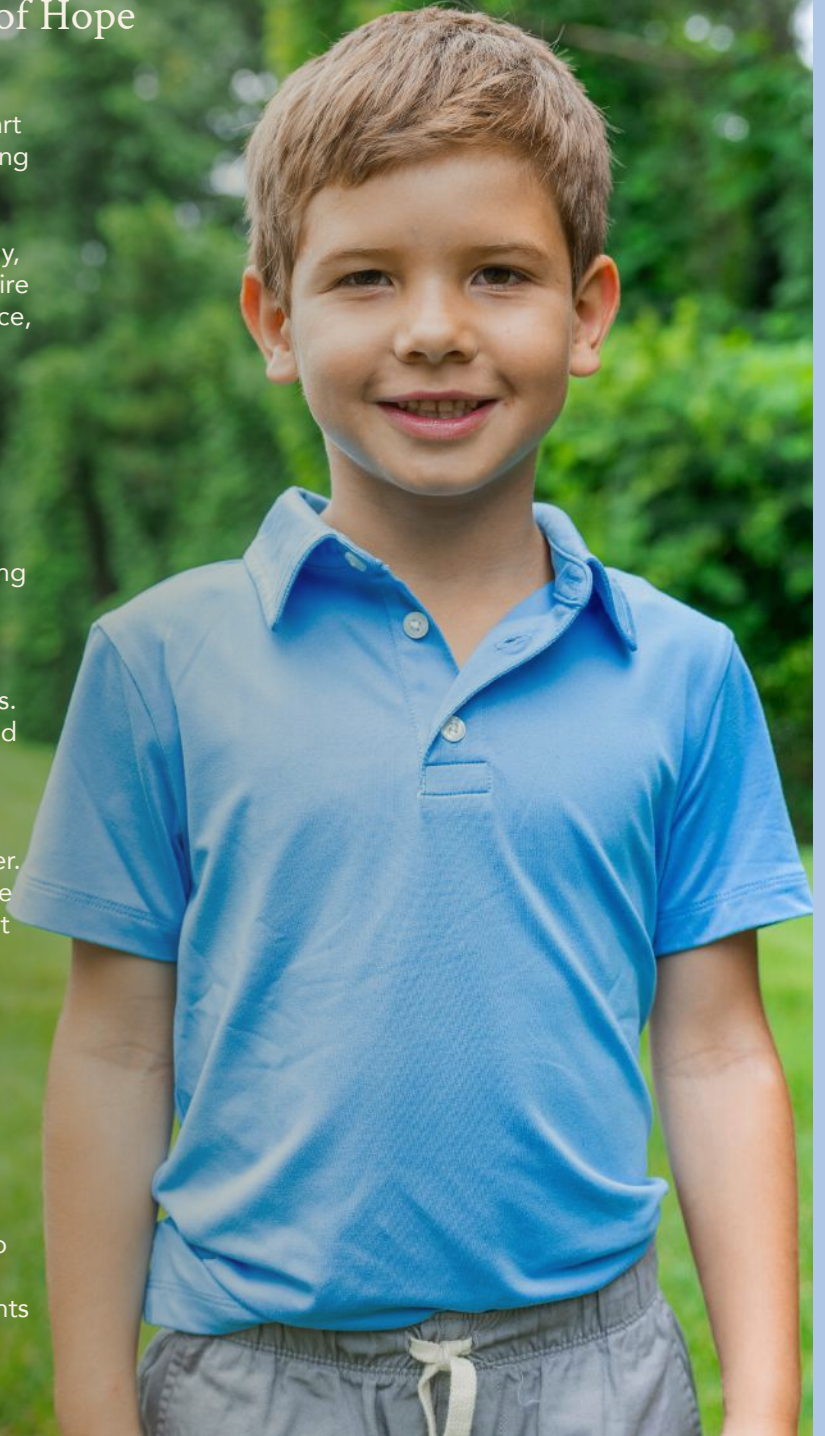
Recognizing the urgent need, a Care Community was built around them to provide the physical and emotional scaffolding they lacked. The transformation began with the basics:

- **Rest & Privacy:** The family was provided with brand-new beds and bedding they chose themselves. A new room divider now offers a sense of privacy and personal space within their studio.
- **Nourishment:** They now receive consistent weekly home-cooked meals and supplemental groceries, easing the financial and physical burden on the father.
- **Consistent Support:** Beyond the tangible goods, the family has a dedicated team offering encouragement and presence.

THE RIPPLE EFFECT OF CARE

The impact of this support has reached far beyond furniture and food. With the "survival" pressure lifted, the family has begun to truly thrive. They have found a spiritual home and attend church regularly.

Perhaps the most beautiful sign of healing is the 13-year-old daughter's new ambition: she has expressed a deep desire to volunteer and give back to others. Having experienced the life-changing power of a supportive community, she now wants to be that light for someone else.



MONTANA

Small Acts, Big Impact: A Win for Central Montana

In the heart of Central Montana, a newly formed Care Community is proving that sometimes the greatest gift you can give a foster parent is simply a seat in a car.

A few months ago, a local church launched a team to surround a single mother caring for five foster siblings (ages 1 to 17) from the Pine Ridge Reservation. While the mom works full-time, the logistics of daily life—specifically a weekly soccer practice across Billings—were becoming a major point of stress.

GOING THE EXTRA MILE

An advocate from the team stepped up to help with transportation (he was following state guidelines). He even brings the child's brother along for the ride. The results have been heartwarming:

- **Relief for Mom:** Taking one evening of driving off her plate allows her to focus on the rest of the household.
- **Building Bonds:** The advocate shared how respectful and excited the boys (ages 10 and 6) were, acting like "little men" during their commute.
- **Consistent Care:** Beyond driving, the church has provided four weeks of consistent meals, bolstering the mom's ability to keep this family of six thriving.

EQUIPPING THE CHURCH

This church is already deeply committed to foster care, but they are finding that the Promise Serves tools and coaching provide the structure they need to go deeper. The Advocate is so encouraged by this success that he's already looking forward to rolling the model out to the entire congregation.

This story serves as a beautiful reminder: when we provide the right "tools for the belt," our communities can show up for foster families in ways that truly change the game.

Promise686 Montana is Now "Rooted Families!"

Promise686 is proud to announce that Promise Montana has become its own organization called "Rooted Families." While continuing to partner with Promise, Rooted Families connects and empowers churches in Montana to care for vulnerable children and families in their communities through the proven model of Family Advocacy Ministries (FAMs).



Montana continues to have one of the highest rates of children in foster care per capita in the United States. The need across this vast and unique state continues to grow. Since its founding in 2021, Promise Montana has served 1,660 children, generating an economic impact exceeding \$759,300.

We are thrilled about the expansion of the Promise686 model. The creation of this organization brings great potential for the families of Montana. Promise is grateful that Rooted Families remains rooted in the promise of Psalm 68:6 that "God sets the lonely in families."

GEORGIA

A Day of Appreciation in Gwinnett County

This year, the Promise686 team joined forces with local churches to host an appreciation luncheon during National Hospitality Week for 65 caseworkers from the Gwinnett County Department of Family and Children Services (DFCS).

The event was a beautiful display of community support:

- Matthew Cathy, grandson of Chick-fil-A founder Truett Cathy, shared his family's legacy of fostering and the mission of the WinShape Foundation.
- Volunteers from local churches and organizations donated items, created centerpieces, wrote notes, served meals, distributed gifts, and handled the logistics of the day.
- Caseworkers shared moving testimonies of how local churches have met immediate needs with Promise support—from providing a laptop for a teenager to essential gear for infants in care.

MORE THAN JUST A MEAL

Promise686 staff were present to share our *Imagine* video with the attendees, highlighting our mission to educate the Church on the child welfare crisis.

A community leader summed up the event by stating,

"I am so grateful and humbled by the genuine love shown to our team. I have been moved to tears. Every single person who was a part of this exhibited the hands and feet of Jesus. This means so much to those of us who are in this often thankless work ... to have folks come alongside us and show the genuine love and care for not just the work we do, but for those of us doing it."

We continue to actively teach churches that supporting local child welfare offices is just as critical as supporting foster families. Whether through Care Communities or physical donations, the Church is stepping up to stand in the gap. We want caseworkers to know that we aren't just supporting families; we are advocating and rallying around them as well.





Stability Matters: Honoring Child Welfare Heroes During National Hospitality Week

Did you know that a child in foster care is four times more likely to find a permanent home when they have a single, consistent social worker?

Statistics show that when a caseworker changes, the chance of a child achieving permanency—meaning a stable, forever home—plummets from 74.5% to just 17.5%. This phenomenon, often called "foster care drift," happens when turnover disrupts the vital bonds and progress made in a child's case.

At Promise686, we know that keeping children safe and settled starts with keeping our caseworkers supported. To combat high turnover rates, we facilitate National Hospitality Week each year in October. Our goal is simple: let our child welfare workers know they are seen, valued, and desperately needed in the field.

This year, through the generosity of Chick-fil-A, over 5,200 \$20 gift certificates were distributed to child welfare workers in six states (NY, GA, Nevada, Indiana, Vermont, and Montana).

2025

Financials

God continues to show His love to the vulnerable by providing for the financial needs of Promise686. For this, we are incredibly grateful. We are thankful that in 2025, Promise saw a 24% increase in business giving and a 9.4% increase in individual giving.

Revenue	\$5,250,764
Individuals	\$1,020,921
Foundations/DAFs	\$2,370,788
Churches	\$215,711
Corporations	\$1,378,353
Non-profit organizations	\$55,075
Other income	\$209,916

Expenses	\$4,360,660
Program	\$3,392,303
Fundraising	\$558,037
Administrative	\$410,320

FAMILY SUPPORT GRANTS

Since 2009, Promise686 has given away over \$4.5 million in Family Support Grants, helping 550+ children and families connect and stay connected for a lifetime. We believe that by decreasing the financial burden, more families are able to open their homes and more children are placed in loving families.

For this reason, Promise administers grants on behalf of participating churches. There are three types of adoption grants:

- **Adoption Matching Grants**
- **Legal Grants**
- **Post-placement Support Grants**

This past year, we distributed grants to 68 families totaling \$304,007, helping families navigate the financial challenges of adoption and post-placement care.

"Ten years ago, we felt called to international adoption but were overwhelmed by the cost. You encouraged us to take it one step at a time and trust that God would provide. Since then, we have brought home two children from China and two more through foster care and private adoption. We are so grateful for the matching grants from Promise686 and your encouragement to step out in faith."

— Family Support Grant Recipient



Join Us

Help us “Expand the Promise”

This opportunity is for people who desire a deep and lasting solution for children and families in need.

promise686.org/expand-the-promise

Become a Corporate Partner

We are looking for strategic partners who believe in the long-term vision of equipping churches to care for vulnerable children.

promise686.org/corporate-partnerships

Donate

The investment you make in Promise686 goes directly toward caring for vulnerable children.

promise686.org/give

More Ways to Give

From donating a car to gifting stocks, check out the other ways that you can make an impact through your generosity.

promise686.org/give#more-ways

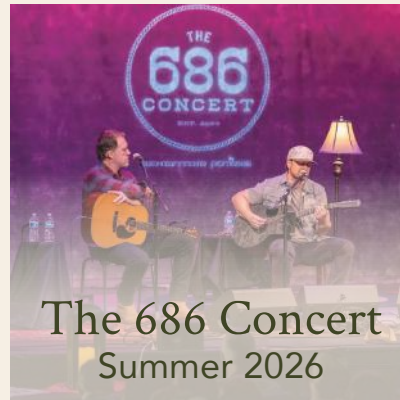
5300 Triangle Parkway, Suite 202
Peachtree Corners, GA 30092



UPCOMING EVENTS



Promise Race
April 25, 2026



The 686 Concert
Summer 2026



Fall Benefit
Fall 2026



STAY CONNECTED



Andy Cook
President & CEO
andy@promise686.org



Ty Bryant
VP of Engagement
ty@promise686.org

General Questions
info@promise686.org

promise686.org