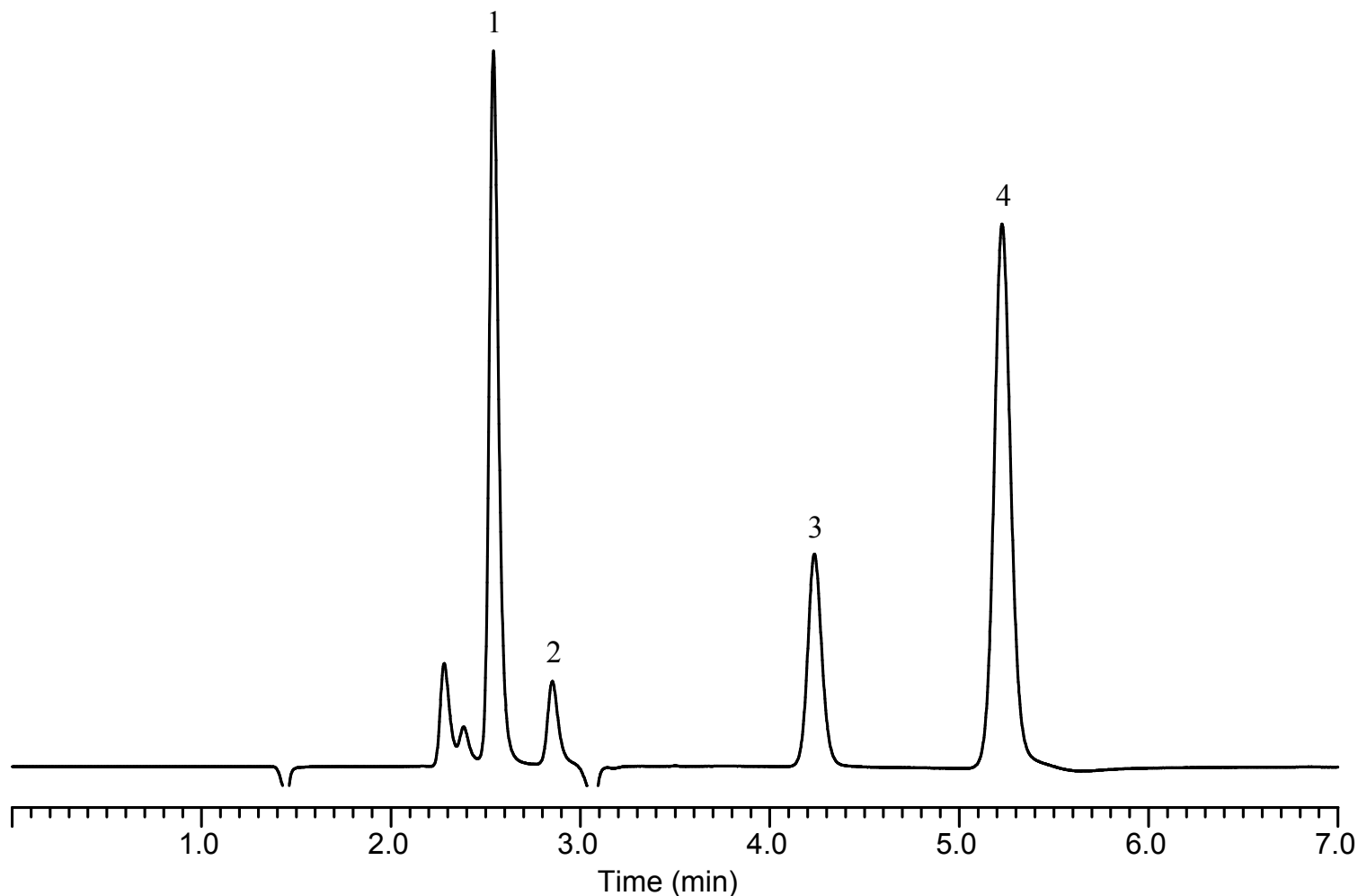


# InertSearch™ for LC

Inertsil™ Applications

## Analysis of Melamine and its related compounds

Data No. LB584-0806



### Conditions

**System** : GL7700 HPLC system  
**Column** : InertSustain PFP HP (3  $\mu$  m, 150 x 2.1 mm I.D.)  
**Column Cat. No.** : 5020-87921  
**Eluent** : 10 mM HCOONH<sub>4</sub> in H<sub>2</sub>O  
**Flow rate** : 0.2 mL/min  
**Col. Temp.** : 40 °C  
**Detection** : UV 210 nm (UV7750 with semi-micro flow cell)  
**Injection Vol.** : 0.5  $\mu$  L  
**Sample** : Standard

### Analyte:

1. Ammelide	100 mg/L
2. Cyanuric acid	1000 mg/L
3. Ammeline	100 mg/L
4. Melamine	100 mg/L