

REDEFINING DENTAL EXCELLENCE

Luxury Meets Performance in Every Detail



Scan for Website



After evaluating multiple chairs in the market, I chose the Ureka Elite for its unmatched combination of design, durability, and patient comfort. The chair's smooth movement, whisper-quiet motors, and luxurious upholstery immediately stood out. It enhances my workflow while giving patients a truly premium experience — something no other chair delivered at this level.

Dr. Aditi Mehra

Founder, Ivory Smiles Dental Studio



Engineered with precision and crafted for peak performance, the Ureka Elite Dental Chair delivers a seamless integration of advanced technology, patient-centered comfort, and structural durability. Its robust solid steel base ensures maximum strength and long-term stability, supporting years of consistent use. Equipped with whisper-quiet motors, the chair glides effortlessly through positions, creating a calm and distraction-free environment.

Premium, medical-grade upholstery combined with an ergonomically adjustable headrest and rotatable handrest ensures superior comfort and accessibility for patients of all ages. Additional smart features like the advanced LED lighting system, suction delay function, and an intuitive instrument console enhance every aspect of the clinical workflow — making Ureka Elite the ultimate solution for modern, efficiency-driven dental practices that refuse to compromise on quality.

The multi-angle adjustable headrest can be adjusted quickly and easily with just one hand.

Linkage mechanism and chairlifting safety protection system.

DCI EDGE LED light, imported from the USA;

- Sensor-based controlling, also with touch control buttons;
- Two options with white light and yellow light.

The unique luxury balance arm design highlights the product feature and pursues the perfect combination of stability and smoothness.

Control Panel with Multiple working Programs



Dual-Mode DCI USA LED Light

The Ureka Elite Dental Chair comes equipped with premium DCI USA LED lights, engineered for superior brightness, clarity, and energy efficiency. **What sets it apart is its dual-mode lighting system, allowing you to seamlessly switch between cool white light and warm yellow light — all with a single touch.**

Whether you're performing detailed diagnostics or patient-friendly consultations, the light adapts instantly to your needs, reducing eye strain and enhancing visibility across every procedure. It's not just illumination — it's intelligent lighting that works the way you do.



Effortless Control at Your Fingertips

The Ureka Elite Dental Chair features a sleek, touch-sensitive On-Off switch for its premium DCI USA LED light. Designed for simplicity and hygiene, this smart control allows you to activate or switch lighting modes instantly — ensuring smooth, hands-free transitions throughout every procedure.

Smart Sensor Control for Seamless Adjustments

The Ureka Elite's DCI USA LED light is equipped with dual-end sensor controls, allowing dentists to easily adjust light intensity from either side. Whether you're working chairside or moving around the unit, the responsive sensors ensure effortless, contactless control — enhancing convenience, hygiene, and clinical efficiency.



The DCI Edge USA LED light on my Ureka Elite Chair has truly transformed the way I practice dentistry. The ability to switch between cool and warm lighting with a single touch allows me to adjust visibility based on the procedure and patient comfort instantly. It's not just about brightness — it's about clarity, precision, and control. Whether I'm doing restorative work or general check-ups, the dual-mode feature reduces eye fatigue and enhances accuracy. It's a small change that's made a big impact in my daily workflow

Dr. Rohan Kapoor

Founder, BrightCare Dental Studio

Dual-Mode Light Control

Switch between cool (white) and warm (yellow) light with a single button for different clinical needs.

Consistent Color Temperature

Great for restorative dentistry where accurate shade matching matters.

Reduced Eye Fatigue

Cool light works great for detailed procedures, while warm light offers a more relaxed experience for the eyes

Low Maintenance & Long Life

The LEDs are built to last and require minimal upkeep, reducing operating costs.

DCI USA LED Quality


The light output is stable, shadow-free, and covers a wide field — perfect for precision work.

Improves Patient Comfort

Warm light is less intimidating and ideal for anxious patients during consultations.

Where Luxury Meets Comfort

American Leather Upholstery



The Ureka Elite Dental Chair features premium American leather upholstery, crafted to elevate the patient experience to a new level of comfort and sophistication. This high-quality material not only delivers a soft, supple feel, but also offers exceptional breathability, helping patients stay relaxed even during longer procedures.

Known for its durability and resistance to wear, the American leather used in Ureka Elite is both aesthetically refined and clinically practical — easy to clean, antibacterial, and built to maintain its form over time. For clinics that value luxury, hygiene, and long-lasting comfort, Ureka Elite's American leather finish is the perfect choice — ensuring your patients feel just as good as they look in your chair.

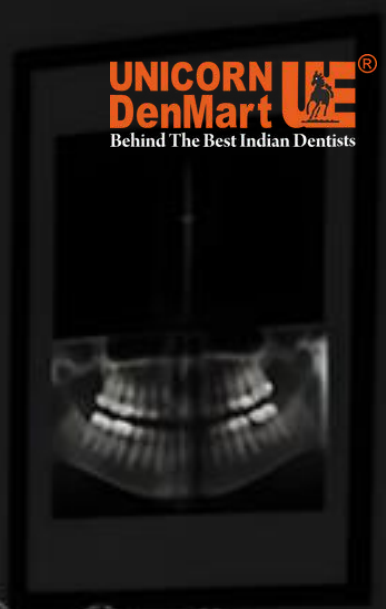
Memory Foam Comfort

The Ureka Elite Dental Chair's upholstery is enhanced with high-density memory foam, offering personalized support that contours to each patient's body. This adaptive cushioning reduces pressure points, promotes better posture, and ensures maximum comfort during long procedures — making every visit feel effortless.

Precision Delivery Unit

Designed for Control & Convenience

The Ureka Elite's delivery unit is engineered for effortless accessibility and smooth operation. With an ergonomic layout, intuitive controls, and optimal handpiece positioning, it enhances procedural flow and reduces operator fatigue. Built for precision and comfort, it ensures everything you need is always within easy reach.



- ✓ Ergonomic handpiece arrangement
- ✓ Intuitive, user-friendly controls
- ✓ Smooth, stable movement mechanism
- ✓ Easy access to essential tools
- ✓ Reduces strain during long procedures

Curved Arm

The Ureka Elite Dental Chair features ergonomically designed curved arms that offer enhanced structural integrity and better weight distribution. This thoughtful design not only ensures patient safety and support but also adds a sleek, modern look to the chair. Built to handle heavier loads effortlessly, the curved arms reinforce the chair's long-lasting durability.

The Ureka Elite's 180° rotatable side cabinet offers enhanced flexibility and ease during installation, especially in compact clinic spaces. There's no need for disassembly when moving through narrow doors, saving time and effort. The cabinet also features a hidden drainage pipe, giving it a cleaner, more elegant appearance while maintaining functionality. Designed for both aesthetics and practicality, it's a perfect fit for modern dental setups.

180° Rotatable Side Cabinet



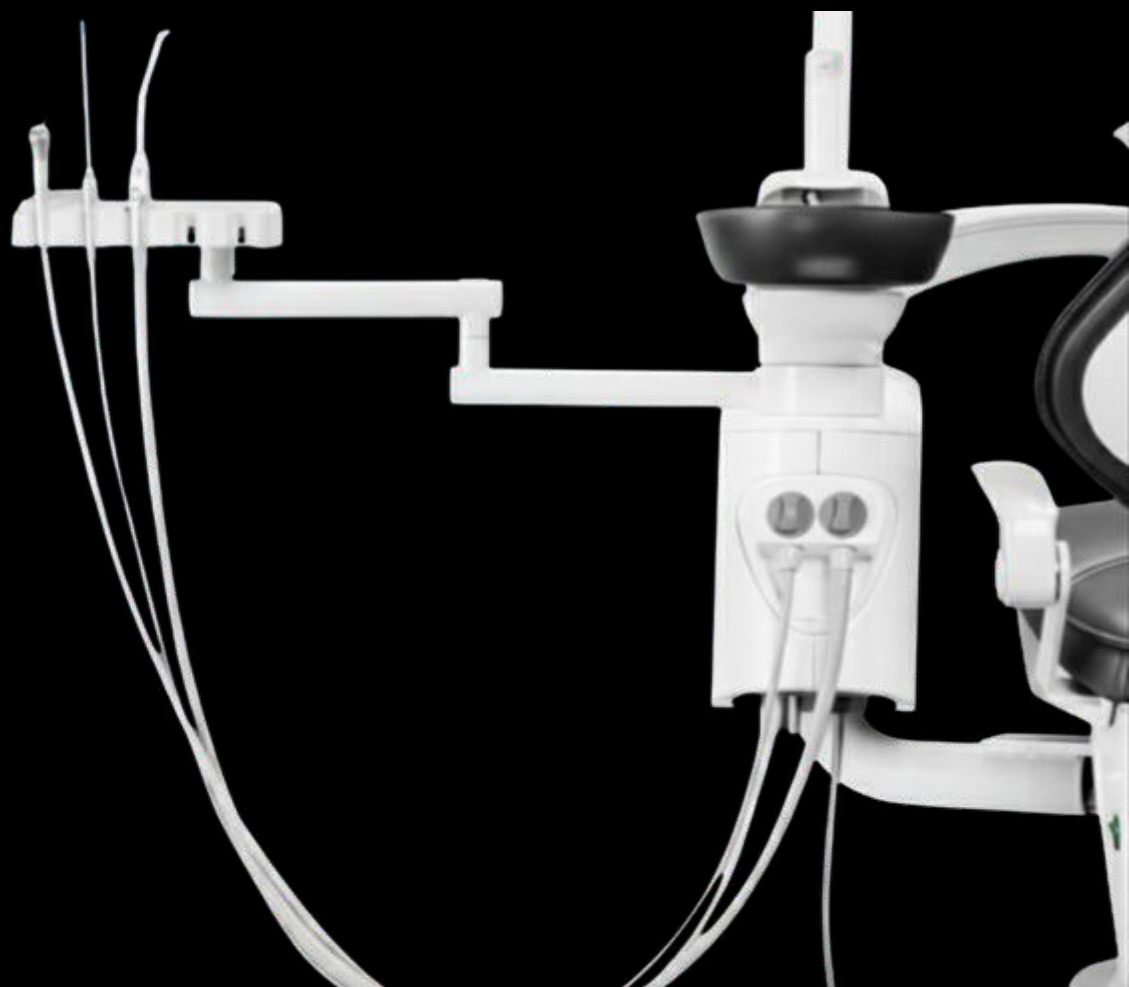
Intelligent Water Temperature Control

The Ureka Elite Dental Chair features a built-in Water Temperature Controller that displays and regulates water temperature in real-time. This ensures a consistent, comfortable experience for patients during procedures, while giving dentists full control for safer, more precise treatments.

Uplink Assistant Console – Clean, Functional, Future-Ready

Designed for efficiency and elegance, the Ureka Elite's Uplink Assistant Console keeps all tubing elevated—ensuring a tidy, floor-free layout that enhances clinic aesthetics. With multiple reserved rack positions, it's ready to accommodate optional tools like curing lights and intraoral cameras, making your setup adaptable and future-proof.

- ✓ Clean and clutter-free appearance
- ✓ Tubing stays off the floor
- ✓ Reduces wear and tear
- ✓ Space for optional add-ons
- ✓ Enhances workflow efficiency
- ✓ Future-ready design



Elegant Hidden Switch

Seamless Functionality, Effortless Cleanliness

The Ureka Elite features a beautifully integrated hidden switch design that blends seamlessly into the chair's structure. Its minimal, elegant look complements the chair's premium aesthetics, while offering easy access for quick operation. The flush surface ensures hassle-free cleaning, maintaining both hygiene and style in your operatory.



Smart Water Storage

Refill Without Removal

The Ureka Elite Dental Chair comes with a built-in Water Storage Bottle that allows for easy refilling without the need for removal. This convenient design saves time, reduces handling, and ensures a more efficient and hygienic water management system.

- ✓ Quick refilling
- ✓ No disassembly needed
- ✓ Saves time
- ✓ Minimizes contamination risk
- ✓ Streamlined maintenance



ADVANCED DISINFECTION SYSTEM

Ureka's optional advanced disinfection system ensures a cleaner, safer environment for both patients and practitioners. Designed for efficiency, it provides thorough internal waterline and handpiece disinfection, reducing cross-contamination risks and supporting strict hygiene protocols with minimal effort.

- ✓ Enhances patient safety
- ✓ Maintains hygiene standards
- ✓ Saves time
- ✓ Protects equipment
- ✓ Boosts patient trust
- ✓ Reduces infection risk



SMART SUCTION FILTER SYSTEM

The Ureka Dental Chair features an intelligent suction delay function that activates after use, allowing residual fluids to clear the system. This helps prevent pipeline blockage and ensures consistent, efficient suction performance throughout the day.

- ✓ Prevents pipeline blockage
- ✓ Extends suction system lifespan
- ✓ Improves suction efficiency
- ✓ Reduces maintenance needs
- ✓ Supports uninterrupted procedures



EXPERIENCE THE NEXT-LEVEL EASE



Adjustable Headrest

- The multi-angle headrest can be easily adjusted to suit various head positions, ensuring patients stay comfortable throughout long procedures.



Rotatable Handrail

- With vertical movement capability, the handrail makes it easier for patients to sit and exit the chair smoothly, reducing physical strain.



Premium Comfort

- Offers luxurious seating with options like high-end sofa materials or imported leather upholstery, delivering a plush and relaxed experience.



Stable Base

- The heavy-duty chassis supports up to 180kg, ensuring patients feel secure and stable, even during extensive procedures.



Efficient Operation

- A streamlined setup, including a waist headrest and ergonomic layout, minimizes unnecessary adjustments and maximizes patient comfort and procedural efficiency.



Whisper-Quiet Motor System

- Advanced low-noise motors ensure smooth, silent chair adjustments—creating a calm, stress-free environment that helps patients feel more relaxed during treatments.

BUILT LIKE AN ELEPHANT

- ✓ Strong
- ✓ Stable
- ✓ Timeless.



The Ureka Elite Dental Chair draws its inspiration from one of nature's most enduring icons — the elephant. Known for their immense strength, steady presence, and incredible lifespan, elephants embody everything the Ureka Elite stands for: **powerful construction, unshakable stability, and lasting performance.**

At its core lies a 20mm one-piece steel base, engineered to support years of intensive clinical use without **compromise.** Every movement is smooth and silent, yet grounded in strength — just like the majestic creature it reflects. With premium materials, precise engineering, and a focus on longevity, the Ureka Elite is more than a dental chair — it's a symbol of reliability you can count on, day after day.

Ergonomic Dentist Stool

Comfort that Supports Precision

The Ureka Elite Dentist Stool is designed to complement long procedures with unmatched comfort and support. Featuring an ergonomic contour, adjustable height, and smooth 360° swivel, it promotes healthy posture and ease of movement. Built with premium materials, it ensures durability and comfort throughout your day.

- ✓ Ergonomic Seat design
- ✓ Adjustable height mechanism
- ✓ Smooth 360° swivel movement
- ✓ Promotes better posture
- ✓ Durable, high-quality build
- ✓ Matches chair aesthetics perfectly



The Ultimate Patient Comfort

The Ureka Elite Dental Chair is thoughtfully engineered to provide a truly relaxing and supportive experience for every patient. From the moment they sit down, patients benefit from ergonomic contours, premium cushioning, and a multi-angle adjustable headrest that adapts effortlessly to their posture.



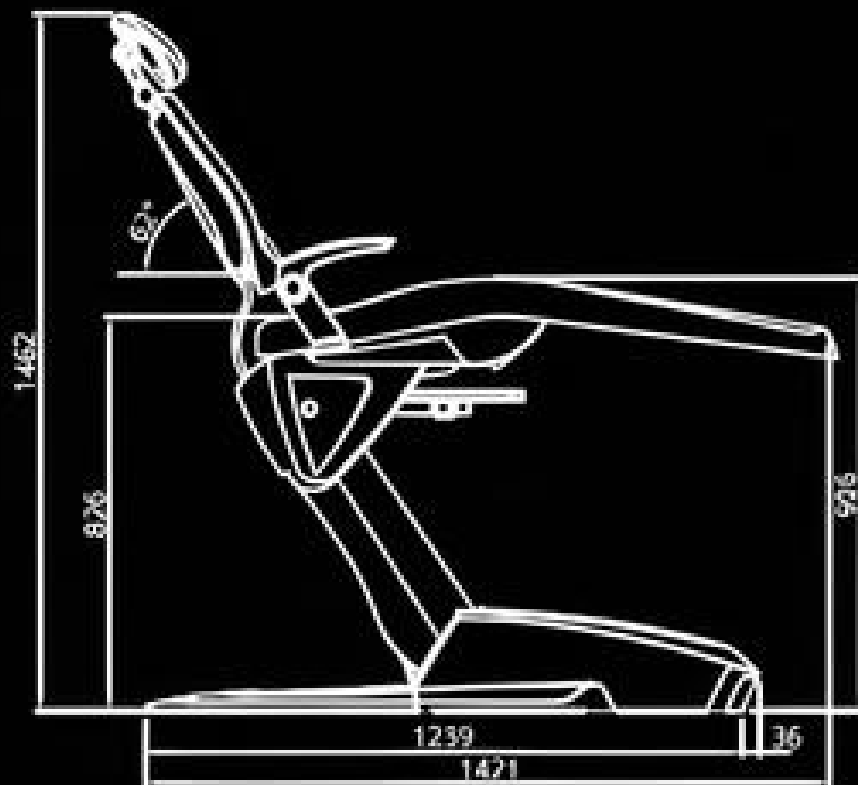
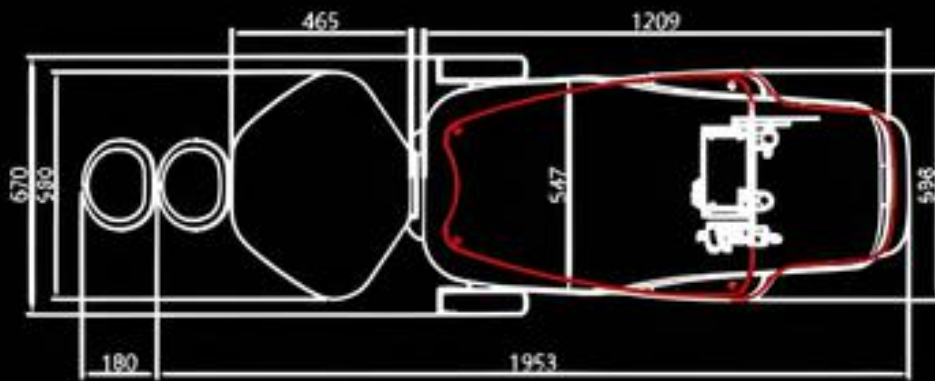
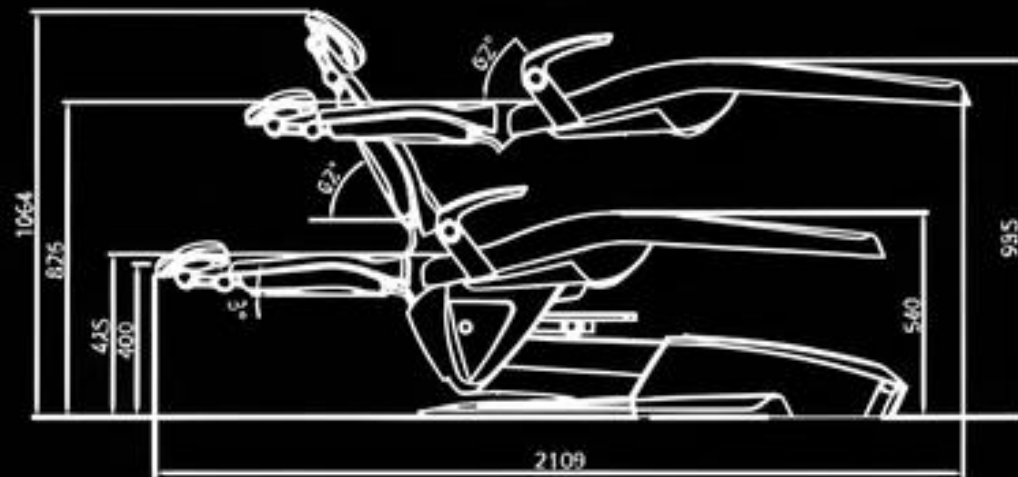
The smooth, whisper-quiet reclining motion ensures stress-free transitions, while the rotatable handrests offer easy entry and exit, especially for elderly or mobility-challenged individuals. Upholstery options include luxurious, medical-grade materials that feel as good as they look — soft to the touch, yet easy to clean.

Every inch of the Ureka Elite is designed with patient comfort in mind — because a relaxed patient is the foundation of a successful practice.

YOUR CHAIR, YOUR STYLE

Customize your Ureka Elite Dental Chair with a range of elegant, durable color options designed to match your clinic's personality. From classic tones to modern hues, each finish is crafted to enhance your space while delivering long-lasting comfort and visual appeal.







WHERE **TRUST** COMES **FIRST**



**Warranty Ke Saath Bhi
Warranty Ke Baad Bhi**

For any Sales & Support

 **85277-00805, 84485-81178**

 **cadcamcrm@unicorndenmart.com | cadcamcrm1@unicorndenmart.com**

Customer Care

Register Your Complaint with A Missed Call: 7065-558-558

 **011-45551250, 51, 55**  **97170-12081, 95994-48518**

 **care@unicorndenmart.com | care1@unicorndenmart.com**

Connect With



Unicorn DenMart



Corporate Office: 3 Local Shopping Centre, MOR Land, Near J Block DDA Market,
New Rajender Nagar, New Delhi – 110060

*Accessories shown may not be a part of standard equipment. Specifications are subject to change without notice.