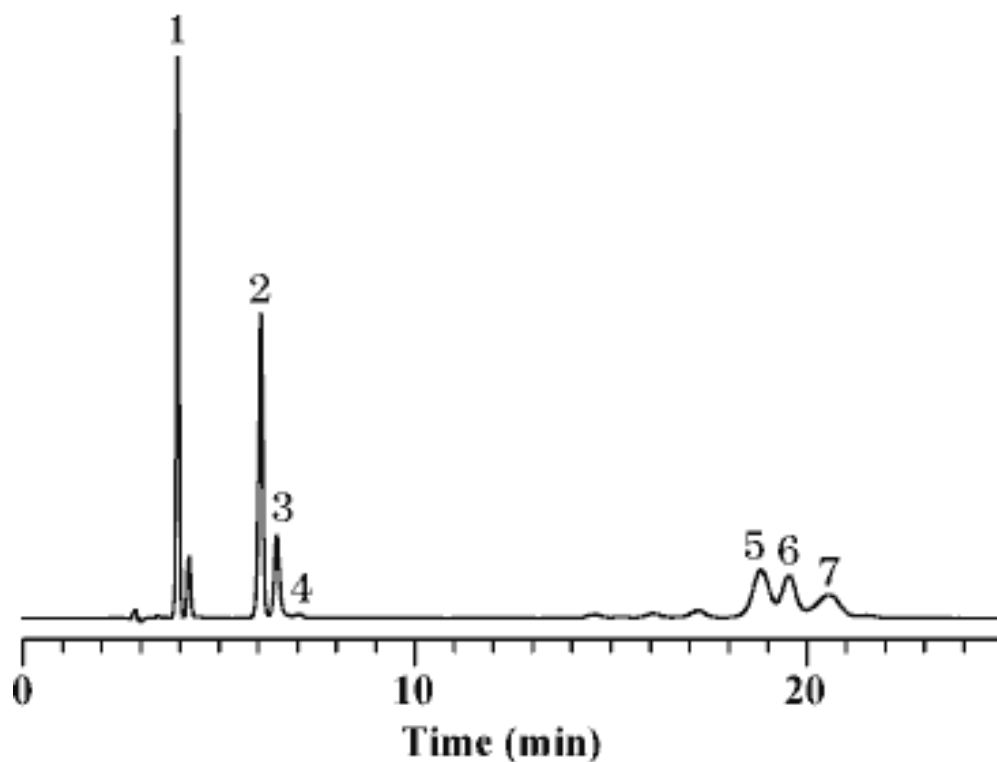


Water-soluble vitamins

Data No. LA043-0000



Column : Inertsil NH2
5 μ m
250 \times 4.6 mm I.D.

Column Cat. No. :

Eluent : 50 mM KH₂PO₄ (pH 2.0; H₃PO₄)/CH₃CN = 30/70

Flow rate : 1.0 mL/min.

Col. Temp. : 40°C

Detection : UV 220 nm

Injection Vol. : 1 μ L

Sample : Water-soluble Vitamins

Solutes : 1. Nicotinamide
2. Nicotinic acid
3. Pyridoxine
4. Folic acid
5. Cyanocobalamin
6. Riboflavine
7. Thiamine