

Cortizo Design 35 Internal Doors & Screens



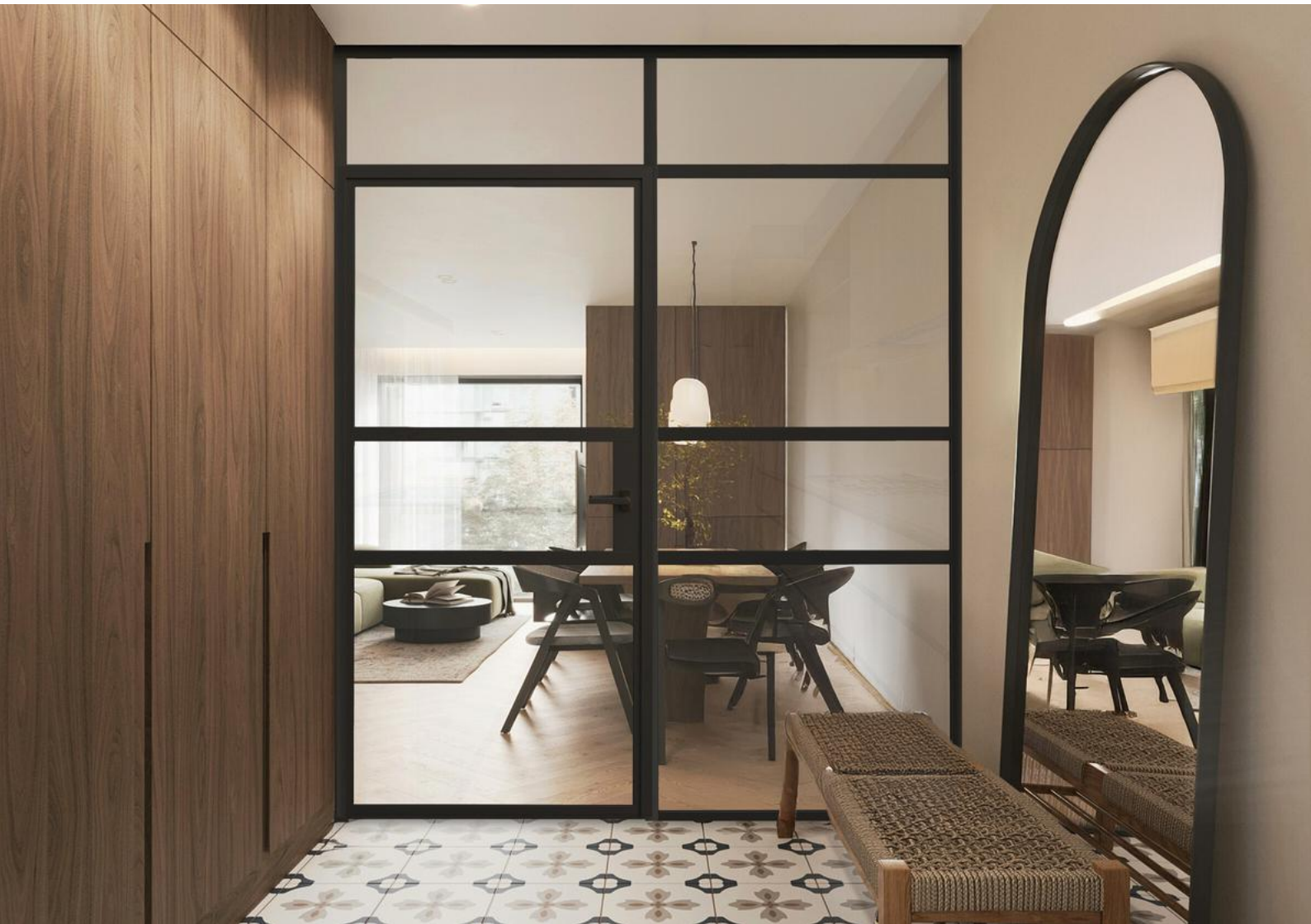
Interiors Reimagined

With its refined aluminium profiles, versatile door options, and striking visual impact, the Cortizo Design 35 Internal Door and Screen system delivers both functional excellence and contemporary style – making it a standout choice.

Its industrial-inspired aesthetic, exceptionally slim sightlines, and flexible single and double sash door and fixed panel configurations make it perfect for zoning open-plan homes, dividing offices, or creating elegant glazed interior screens – without sacrificing natural light or visual flow.

Key Features & Benefits

- ✓ Ultra-Slim Sightlines - 35mm profile system with 32mm visible sightlines
- ✓ Flexible single or double sash door configurations
- ✓ Balances large glazed expanses with structural stability
- ✓ Glazing up to 12mm thickness
- ✓ Choice of magnetic or mechanical locking mechanisms
- ✓ Optional automatic drop-seal in the door base



Technical Information

Lateral Visible Section

Fixed 32mm
Opening 58 mm

Maximum Door Dimensions

Width (L) 1200 mm
Height (H) 2500 mm

Glazing

Maximum 12 mm
Minimum 4 mm

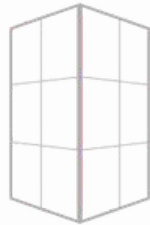
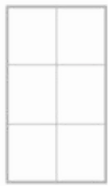
Max Sash Weight 90 kg

Locking Magnetic or mechanical

Configuration



Fixed Units



Inward-Opening Doors



Handles & Pulls

Line or Deco Handles

Titanium gold, titanium black and satin stainless finishes
Matching door stops and key escutcheons.



Satin Stainless
Line



Titanium Black
Line



Titanium Gold
Line



Deco

Art Infinity Pull Handles

For doors with magnetic
retainer





 01623 702611

www.directroofingsystems.co.uk

Unit B1 Concorde Way, Millennium Business Park, Mansfield, Nottinghamshire NG19 7JZ