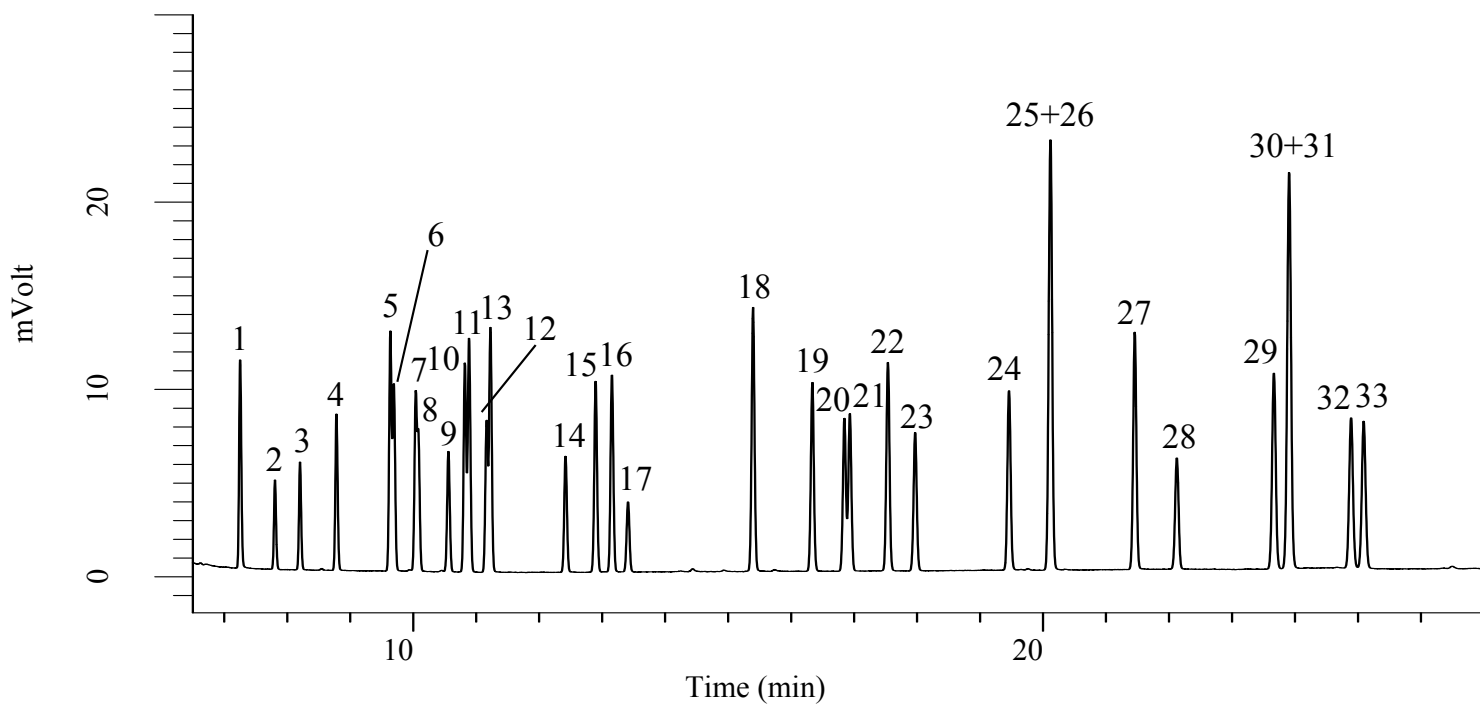


## Organic Solvents

Data No. GA223-0644



### Conditions

**System** : GC-FID  
**Column** : InertCap 624  
 0.25 mm I.D. x 60 m df = 1.4 µm  
**Col. Cat. No.** : 1010-14666  
**Col. Temp.** : 60 °C - 4 °C/min - 150 °C (7 min hold)  
**Carrier Gas** : He 200 kPa  
**Injection** : Split flow 80 mL/min  
 250 °C  
**Detection** : FID Range 10<sup>0</sup>  
 250 °C

**Sample Size** : Analyte in Methanol

**Analyte** : 0.2 µL  
 1. 1,1-Dichloroethene  
 2. Dichloromethane  
 3. *trans*-1,2-Dichloroethene  
 4. 1,1-Dichloroethane  
 5. 2,2-Dichloropropane  
 6. *cis*-1,2-Dichloroethene  
 7. Bromochloromethane  
 8. Chloroform  
 9. 1,1,1-Trichloroethane  
 10. 1,1-Dichloropropene

11. Carbondetrachloride  
 12. Benzene  
 13. 1,2-Dichloroethane  
 14. Trichloroethene  
 15. 1,2-Dichloropropane  
 16. Dibromomethane  
 17. Bromodichloromethane  
 18. Toluene  
 19. 1,1,2-Trichloroethane  
 20. Tetrachloroethene  
 21. 1,3-Dichloropropane  
 22. Dibromochloromethane  
 23. 1,2-Dibromoethane  
 24. Chlorobenzene  
 25. *m*-Xylene  
 26. *p*-Xylene  
 27. *o*-Xylene  
 28. Bromoform  
 29. 1,1,2,2-Tetrachloropropane  
 30. 1,2,3-Trichloropropane  
 31. Bromobenzene  
 32. *m*-Chlorotoluene  
 33. *p*-Chlorotoluene