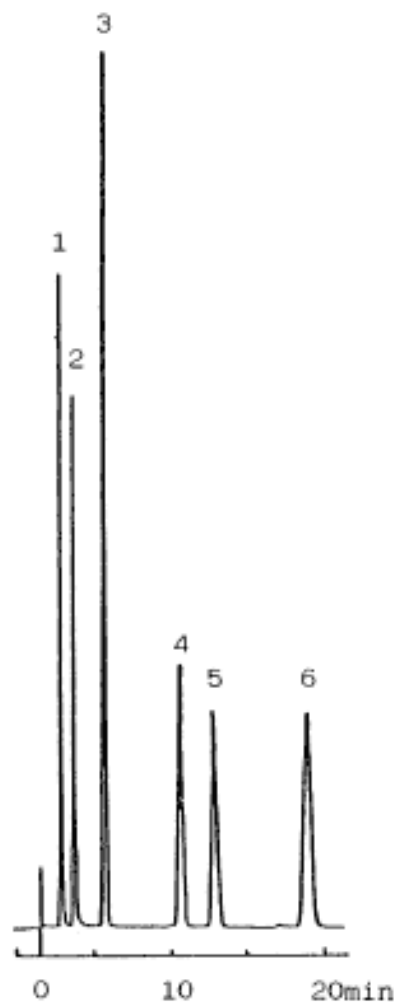


Metal complexes of Etioporphyrin

Data No. LA414-0000



Column : Inertsil ODS-2
5 μ m
150 \times 4.6 mm I.D.

Column Cat. No. : 5020-01101

Eluent : CH₃OH/Acetone = 80/20

Flow rate : 1.0 mL/min.

Col. Temp. : Ambient

Detection : VIS 400 nm

Injection Vol. :

Sample : Metal complex of etioporphyrin

Solutes : 1. Zn (etio)

2. Vo (etio)

3. H₂ (etio)

4. Ni (etio)

5. Pb (etio)

6. Cu (etio)