

QUICK-SHIP

DOORS and CAST HATCHES

We are Passionate About Delivering
Reliable *SOLUTIONS*
Superior *QUALITY*
World Class *SUPPORT*



Ready in 3 Weeks or Less

ADVANTEC ADVANTAGE



**3 YEAR
HASSLE-FREE
WARRANTY**

Proudly part of the **AdvanTec** family of brands



ADVANTEC GLOBAL INNOVATIONS



ADVANTECGLOBAL



ADVANTEC MARINE

WWW.ADVANTECGLOBAL.COM



Proudly part of the **AdvanTec** family of brands



Quick Availability.

Quick-Ship Program

These items are in stock or ready to ship within 3 weeks or less, guaranteed. If not, AdvanTec Marine will pay for ground shipping within the Continental North America*.

*Excluding Alaska & Hawaii.

Quality Policy Statement

- Consistently meet or exceed our customer's expectation for product quality and performance.
- Consistently meet or exceed our customer's expectation for product and service delivery.
- Continuously improve our processes and systems.
- Provide employee training to better serve our customers and to support personal growth.

INFO

www.advantecglobal.com
www.advantecmarine.com
sales@advantecglobal.com
1.800.770.0455

CONSULT | CREATE | DESIGN | MANUFACTURE | DELIVER

AdvanTec's "Industry Leading" 3 Year Hassle Free Warranty

We are committed to delivering solutions that meet our customer's requirements. We offer after-sales service and commissioning support for all products sold.

All Non-Powered Equipment

- Platinum Warranty - 36 months from date of shipment

All Powered Equipment:

- Standard Warranty - 24 months from date of shipment
- Additional 12 months requires commissioning by AdvanTec Marine or certified technician

1.800.770.0455

***Quick-Ship* program**

We apply the spirit of invention and collaboration to evolve our business and industry; allowing us to deliver the most innovative solutions to our customers.

Quick Turnaround.

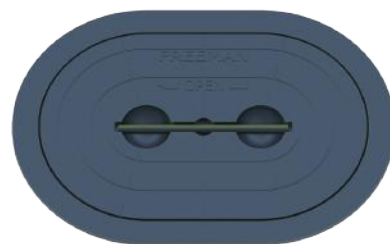
AdvanTec Marine's Quick-Ship program delivers rapid turnaround on watertight and weather tight doors and hatches. Value engineered at the company's manufacturing centers, standard size in-stock doors and hatches ship the next day.

AdvanTec Marine's engineering and design teams wanted to create a turnkey cost effective solution to meet the urgent replacement needs their customers often expressed.

Our Client base includes North America & International Navies, Governments, Militaries and Super Yacht Builders. With a growing team of close to 300 people; we host a wide variety of engineers and technical experts that strive to excel and push the market forward.

Whether you have an emergency replacement need, or a refit that can't wait, AdvanTec Marine's Quick-Ship program delivers high-quality door and hatch closures quickly.

Doors..... Page 4 Hatches Page 10



CONSULT | CREATE | DESIGN | MANUFACTURE | DELIVER



Proudly part of the **AdvanTec** family of brands



Quick-Ship Doors

The AdvanTec Marine's Quick-Ship door line is designed to withstand the rigors of offshore recreational and commercial applications.

Dependent on the model, our doors are available in hinged, dutch, and french configurations.

No blow-outs, smooth operation and excellent visibility is what boat owners have come to expect from AdvanTec Marine closures.

Our doors are used on a wide variety of yachts, fishing boats, tugs, barges, research vessels, offshore tenders, rescue craft and many more. Ruggedly built with precision working components of aluminum, steel, stainless steel, and other quality materials. Our Quick-Ship doors use the individual dogging mechanisms.



250 Doors

250 Series Weathertight Single Door

- Marine Grade .090" Aluminum Captured Panel Skins Mill Finish
- Welded 6063 Flanged Aluminum Frame
- 4" Radius Corners
- Gasket on Frame
- Gasketed Joint Between Upper and Lower Panels
- Bolt-in or Weld-in Frames
- (2) Individual Nylon Dogs
- Insulation 1-1/2" Korolite Rigid Foam Core
- Stainless Steel Hinges and Fasteners



250 Doors, Dutch

250 Series Weathertight Dutch Door

- Marine Grade .090" Aluminum Captured Panel Skins Mill Finish
- Welded 6063 Flanged Aluminum Frame
- 4" Radius Corners
- EPDM Black Gasket on Frame
- Bolt-in or Weld-in Frames
- (2) Individual Nylon Dogs
- Insulation 1-1/2" Korolite Rigid Foam Core
- Stainless Steel Hinges and Fasteners



1212 Doors

1212 Series Watertight Door

- Marine Grade Interprime 198 Red Oxide Primer Finish
- Welded Mild Steel, Radius Formed Corners
- Gasket on Door Panel for Long Life and Positive Sealing
- .25" Thick, Outside Mild Steel Panel
- (4) Individual Dogs
- (3) Welded Steel Panel Hinges
- Inside and Outside Round-bar Steel Handles



300X Doors

300X Series Weathertight Single Sliding Door

- Commercial Duty Closure Designed for Offshore Use
- Marine Grade 6063 Aluminum
- Mill Finish
- Insulation Korolite Rigid Foam Core
- Tempered Window
- Trioving Lockset with 3 keys





Proudly part of the AdvanTec family of brands



250 Series Hinged Door

In Stock or Ready in 3 Weeks or Free Delivery in North America

Part No.	Rough Opening	Handing	Window
250-H2464L	24" x 64"	LH	10" x 16"
250-H2464R	24" x 64"	RH	10" x 16"
250-H2466L	24" x 66"	LH	10" x 16"
250-H2466R	24" x 66"	RH	10" x 16"
250-H2472L	24" x 72"	LH	10" x 16"
250-H2472R	24" x 72"	RH	10" x 16"
250-H2664L	26" x 64"	LH	10" x 16"
250-H2664R	26" x 64"	RH	10" x 16"
250-H2666L	26" x 66"	LH	10" x 16"
250-H2666R	26" x 66"	RH	10" x 16"
250-H2672L	26" x 72"	LH	10" x 16"
250-H2672R	26" x 72"	RH	10" x 16"
250-H2678L	26" x 78"	LH	10" x 16"
250-H2678R	26" x 78"	RH	10" x 16"
250-H3066L	30" x 66"	LH	15" x 20"
250-H3066R	30" x 66"	RH	15" x 20"
250-H3072L	30" x 72"	LH	15" x 20"
250-H3072R	30" x 72"	RH	15" x 20"
250-H3078L	30" x 78"	LH	15" x 20"
250-H3078R	30" x 78"	RH	15" x 20"
250-H3666L	36" x 66"	LH	15" x 20"
250-H3666R	36" x 66"	RH	15" x 20"
250-H3672L	36" x 72"	LH	15" x 20"
250-H3672R	36" x 72"	RH	15" x 20"
250-H3678L	36" x 78"	LH	15" x 20"
250-H3678R	36" x 78"	RH	15" x 20"



1.800.770.0455

250 Series Dutch Door

In Stock or Ready in 3 Weeks or Free Delivery in North America

Part No.	Rough Opening	Handing	Window
250-D2466L	24" x 66"	LH	10" x 16"
250-D2466R	24" x 66"	RH	10" x 16"
250-D2666L	26" x 66"	LH	10" x 16"
250-D2666R	26" x 66"	RH	10" x 16"
250-D3066L	30" x 66"	LH	15" x 20"
250-D3066R	30" x 66"	RH	15" x 20"
250-D3666L	36" x 66"	LH	15" x 20"
250-D3666R	36" x 66"	RH	15" x 20"
250-D2472L	24" x 72"	LH	10" x 16"
250-D2472R	24" x 72"	RH	10" x 16"
250-D2672L	26" x 72"	LH	10" x 16"
250-D2672R	26" x 72"	RH	10" x 16"
250-D3072L	30" x 72"	LH	15" x 20"
250-D3072R	30" x 72"	RH	15" x 20"
250-D3672L	36" x 72"	LH	15" x 20"
250-D3672R	36" x 72"	RH	15" x 20"
250-D2678L	26" x 78"	LH	10" x 16"
250-D2678R	26" x 78"	RH	10" x 16"
250-D3078L	30" x 78"	LH	15" x 20"
250-D3078R	30" x 78"	RH	15" x 20"
250-D3678L	36" x 78"	LH	15" x 20"
250-D3678R	36" x 78"	RH	15" x 20"
250-H3672L	36" x 72"	LH	15" x 20"
250-H3672R	36" x 72"	RH	15" x 20"
250-H3678L	36" x 78"	LH	15" x 20"
250-H3678R	36" x 78"	RH	15" x 20"





Proudly part of the **AdvanTec** family of brands



1212 Series Watertight Door

In Stock or Ready in 3 Weeks or Free Delivery in North America

Part No.	Spigot Size	Handing
1212-2460L	24" x 60"	LH
1212-2460R	24" x 60"	RH
1212-2464L	24" x 64"	LH
1212-2464R	24" x 64"	RH
1212-2466L	24" x 66"	LH
1212-2466R	24" x 66"	RH
1212-2468L	24" x 68"	LH
1212-2468R	24" x 68"	RH
1212-2660L	26" x 60"	LH
1212-2660R	26" x 60"	RH
1212-2664L	26" x 64"	LH
1212-2664R	26" x 64"	RH
1212-2666L	26" x 66"	LH
1212-2666R	26" x 66"	RH
1212-2668L	26" x 68"	LH
1212-2668R	26" x 68"	RH
1212-2860L	28" x 60"	LH
1212-2860R	28" x 60"	RH
1212-2864L	28" x 64"	LH
1212-2864R	28" x 64"	RH
1212-2866L	28" x 66"	LH
1212-2866R	28" x 66"	RH



1.800.770.0455

300X Series Sliding Door

In Stock or Ready in 3 Weeks or Free Delivery in North America

Part No.	Heel Size	Handing	Window
300X-2464L	24" x 66"	LHS	15-3/4" x 23-1/2"
300X-2464R	24" x 66"	RHS	15-3/4" x 23-1/2"
300X-2466L	24" x 66"	LHS	15-3/4" x 23-1/2"
300X-2466R	24" x 66"	RHS	15-3/4" x 23-1/2"
300X-2472L	24" x 72"	LHS	15-3/4" x 23-1/2"
300X-2472R	24" x 72"	RHS	15-3/4" x 23-1/2"
300X-2664L	26" x 64"	LHS	17-3/4" x 23-1/2"
300X-2664R	26" x 64"	RHS	17-3/4" x 23-1/2"
300X-2666L	26" x 66"	LHS	17-3/4" x 23-1/2"
300X-2666R	26" x 66"	RHS	17-3/4" x 23-1/2"
300X-2672L	26" x 72"	LHS	17-3/4" x 23-1/2"
300X-2672R	26" x 72"	RHS	17-3/4" x 23-1/2"
300X-2678L	26" x 78"	LHS	17-3/4" x 23-1/2"
300X-2678R	26" x 78"	RHS	17-3/4" x 23-1/2"
300X-3066L	30" x 66"	LHS	21-3/4" x 24-1/2"
300X-3066R	30" x 66"	RHS	21-3/4" x 24-1/2"
300X-3072L	30" x 72"	LHS	21-3/4" x 24-1/2"
300X-3072R	30" x 72"	RHS	21-3/4" x 24-1/2"
300X-3078L	30" x 78"	LHS	21-3/4" x 24-1/2"
300X-3078R	30" x 78"	RHS	21-3/4" x 24-1/2"
300X-3666L	36" x 66"	LHS	27-3/4" x 24-1/2"
300X-3666R	36" x 66"	RHS	27-3/4" x 24-1/2"
300X-3672L	36" x 72"	LHS	27-3/4" x 24-1/2"
300X-3672R	36" x 72"	RHS	27-3/4" x 24-1/2"
300X-3678L	36" x 78"	LHS	27-3/4" x 24-1/2"
300X-3678R	36" x 78"	RHS	27-3/4" x 24-1/2"



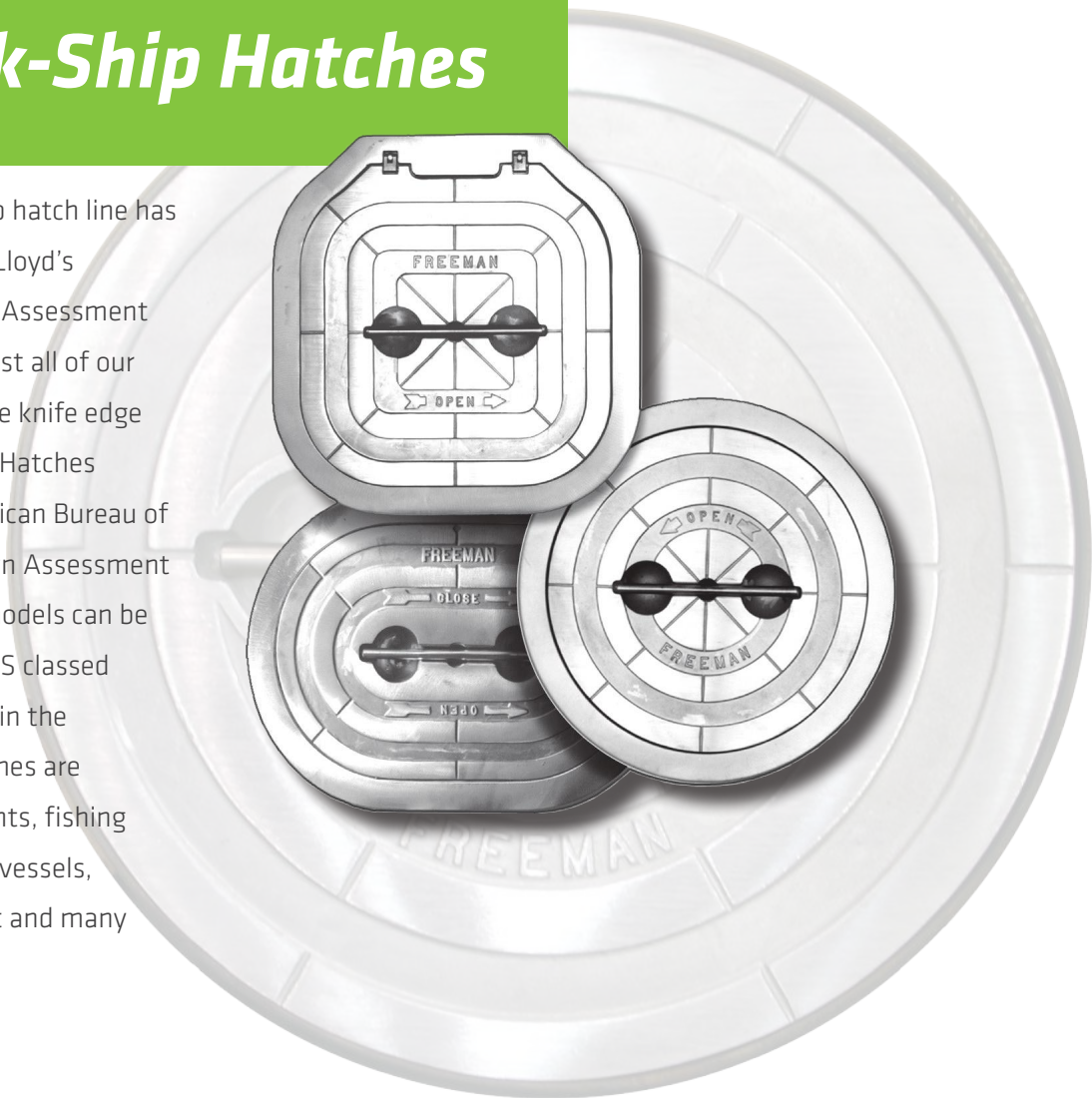


Proudly part of the **AdvanTec** family of brands



2400 Quick-Ship Hatches

AdvanTec Marine's Quick-Ship hatch line has approvals and certifications. Lloyd's Register (LR) Product Design Assessment Certification is in place on most all of our 2400 Series Cast Hatches. The knife edge style of the 2400 Series Cast Hatches have also been granted American Bureau of Shipping (ABS) Product Design Assessment Certification. Each of these models can be used on a number of LR & ABS classed vessels in locations specified in the design assessment. Our hatches are used on a wide variety of yachts, fishing boats, tugs, barges, research vessels, offshore tenders, rescue craft and many more.



15" x 24" Oval Compression Seal Aluminum Ring , Lift-out Shown
2433-0002

Also available with:
Steel Ring, Hinged



20" Round Compression Seal Steel Ring , Lift-out Shown
2406-0003

Also available with:
Aluminum Ring



24"x 24" Square Knife-edge Seal Steel Ring , Hinged Shown
2464-0003

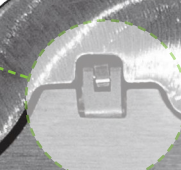
Also available with:
Aluminum Ring, Lift-out

Features

- Evenly spaced dogging arms exert uniform force on the cover plate.
- Handle position shows when dogging arms are engaged or disengaged.
- Handle is always attached. Hatch and handle fit flush with the deck with the handle in a recessed locked position.
- Watertight hatches are designed to seal up to 30 foot intermittent head, the double- sealing gasket seals tighter under pressure.
- Versatile installation, hatches can be installed in steel, aluminum, wood, or fiber glass decks.
- Complete units include aluminum or steel mounting rings for bolt-in or weld-in installations.
- Dogging mechanism assures smooth consistent action; no binding or jamming.
- Quick-acting dogging eliminates over or under tightening; hatch operates the same each time.

Hinged Hatches

For hinged models the unique hinging device allows the hatch to be opened more than 180 Degrees and “floats” when the hatch is closed to facilitate a tighter seal. Round hatches 18” and larger, and all oval and square hatches with aluminum covers are available hinged from the factory.



Quick-Ship Sizes available

In stock configurations, ready in 1 week or free delivery in North America

Part No	Model	Shape	Style	Ring	Clear Opening		Rough Opening*		Overall		Cover	Dog Qty	Weight	
					(in)	(mm)	(in)	(mm)	(in)	C (mm)	MTRL		Lbs	Kgs
2406-0002	20	Round	LO	A-C	20.0	508	22.7	576	26.5	674	ALUM	4	36	16.3
2406-0003	20	Round	LO	S-C	20.0	508	22.6	575	22.6	575	ALUM	4	37	16.8
2433-0002	1524	Oval	LO	A-C	14.8x23.7	376x603	17.7x26.7	450x677	21.3x30.3	542x768	ALUM	4	44	20
2433-0003	1524	Oval	LO	S-C	15.0x24.0	381x610	17.5x26.5	445x673	17.5x26.5	445x673	ALUM	4	44	20
2474-0002	1524	Oval	H	A-K	15.0x24.0	380x610	18.1x27.2	460x690	22.8x30.5	578x775	ALUM	4	45	20.4
2424-0002	2424	Square	LO	A-K	24.6x24.6	625x625	27.5x27.5	697x697	31.2x31.2	792x792	ALUM	4	63	28.6
2424-0003	2424	Square	LO	S-K	24.0x24.0	610x610	27.4x27.4	695x695	27.4x27.4	695x695	ALUM	4	82	37.2
2464-0002	2424	Square	H	A-K	24.0x24.0	610x610	27.5x27.5	698x698	33.1x31.2	840x792	ALUM	4	59	26.7
2464-0003	2424	Square	H	S-K	24.0x24.0	610x610	27.4x27.4	695x695	29.6x27.4	752x695	ALUM	4	87	39.5

Style LO = Lift Out, H = Hinged *Does not include hinge pockets

ADVANTEC MARINE QUICK-SHIP

Contact

INFO

www.advantecglobal.com
www.advantecmarine.com
sales@advantecglobal.com
1.800.770.0455

ADDRESSES

AdvanTec Marine USA Sales Office
Suite A-106
16531 13th Avenue West
Lynnwood, WA 98037
USA

AdvanTec Manufacturing USA
28336 Hunter Creek Rd
Gold Beach, OR 97444
USA

AdvanTec Manufacturing Canada
46373 Progress Way
Chilliwack, BC V2R 0C3
Canada

ADVANTEC ADVANTAGE



**3 YEAR
HASSLE-FREE
WARRANTY**

WE ARE PASSIONATE ABOUT DELIVERING

RELIABLE **SOLUTIONS**
SUPERIOR **QUALITY**
WORLD-CLASS **SUPPORT**

About AdvanTec Marine

AdvanTec Marine is one of the largest closure manufacturers in the world delivering class approved projects; 150,000 **Doors, Windows, Hatches, Cranes, Portlights** and **Components** shipped to over 50 countries.

With over 120 years of collective experience specializing in: design, engineering and manufacturing of specialty application closures and all of the products and solutions are conceived, designed, engineered and manufactured here in North America.

AdvanTec Marine is made up of collaborating marine brands who are some of the best known brands in the marine industry: **Diamond Sea Glaze, Freeman Marine, Pacific Coast Marine, Steelhead Marine, Manly Marine and USA Sliding Doors.**

The team at AdvanTec is driven by passion and an insatiable urge for creativity. Combine that with our corporate philosophy that runs deep down in our soul: Consult, Create, Design, Manufacture & Deliver; and you will see a perfect recipe for consistent innovation.

Proudly part of the **AdvanTec** family of brands



ADVANTEC GLOBAL INNOVATIONS



ADVANTECGLOBAL



ADVANTEC MARINE

WWW.ADVANTECGLOBAL.COM