



FINE ART

HANDCRAFTED LIGHTING

2024 SUMMER SUPPLEMENT

ANTONIA

HONORING LIGHTING AS AN ART FORM

OUR MISSION

To create lighting and studio glass defining luxury and elegance in uniquely designed environments throughout the world.

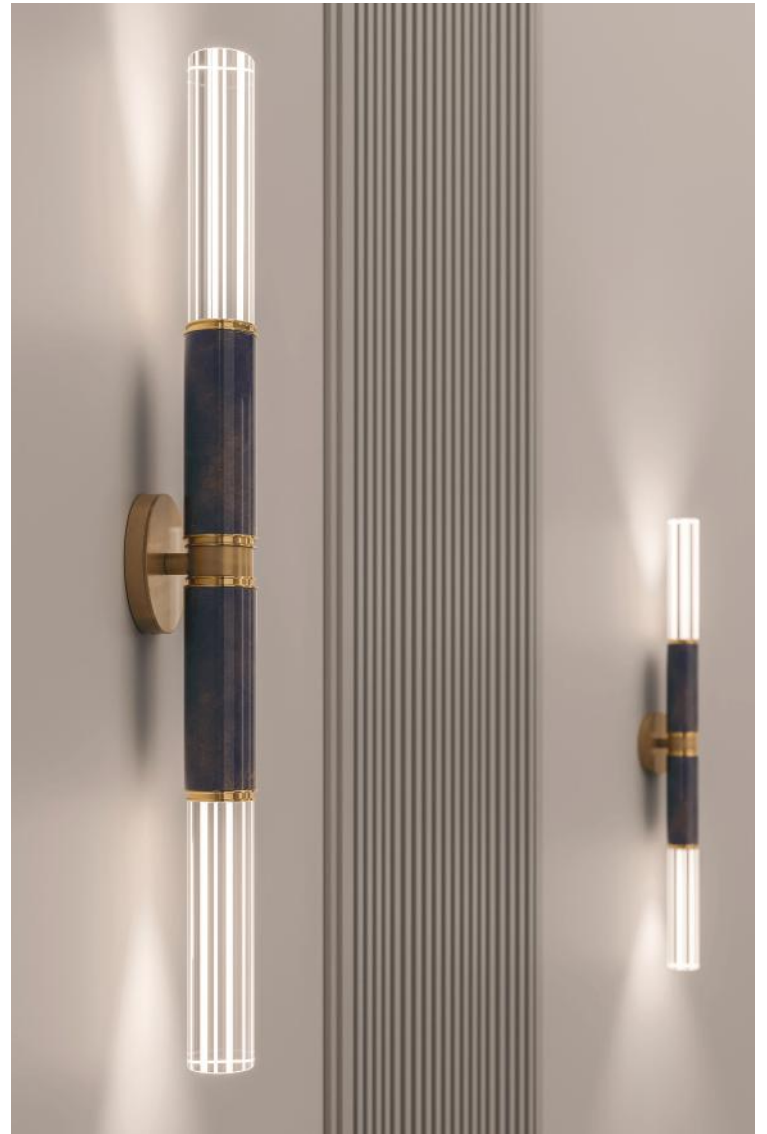
ABOUT US

Fine Art Handcrafted Lighting is world-renowned for achieving high artistic standards in the creation of unique and original lighting designs of beautiful American studio glasshandcrafted metals and other unique materials with exquisite hand-applied finishes.

We offer a comprehensive customization program that is designed entirely around you. Whether your goal is to create unique pieces of artwork or to modify any one of our thousands of existing products to your specificationsno custom project is too bigincluding site-specific custom installations. Our highly experienced and collaborative team of designersengineers and artisans have delivered exceptional lighting solutions for some of the most beautiful and diverse commercial markets around the world.



We have made every effort to accurately represent the character of our finishes shown in this catalog however due to printing there may be variations. In additionthere may be variations in handmade finishes. To request a sampleplease contact your Territory Manager or send an email to customerservice@finearthl.com. Fine Art Lamps®



ANTONIA

Since the turn of the 20th century, when the wonder of electric light was thrust into the mainstream of civilization, it begged designers to integrate its newfound relevance into their work. One hundred years later, with new technology, the splendor of design continues to evolve, and we reinvent the classics of the past while still paying homage to the masters that came before.

The Antonia lifestyle “steps into the light” in her collaboration with Fine Art Handcrafted Lighting with a seamless marriage between two iconic design styles, Art-Deco and Mid-Century Modern.

Antonia Caicedo is a well curated interior architect and interior designer, having executed several international projects in Paris, Miami, Park City, Houston and Bogotá among others.

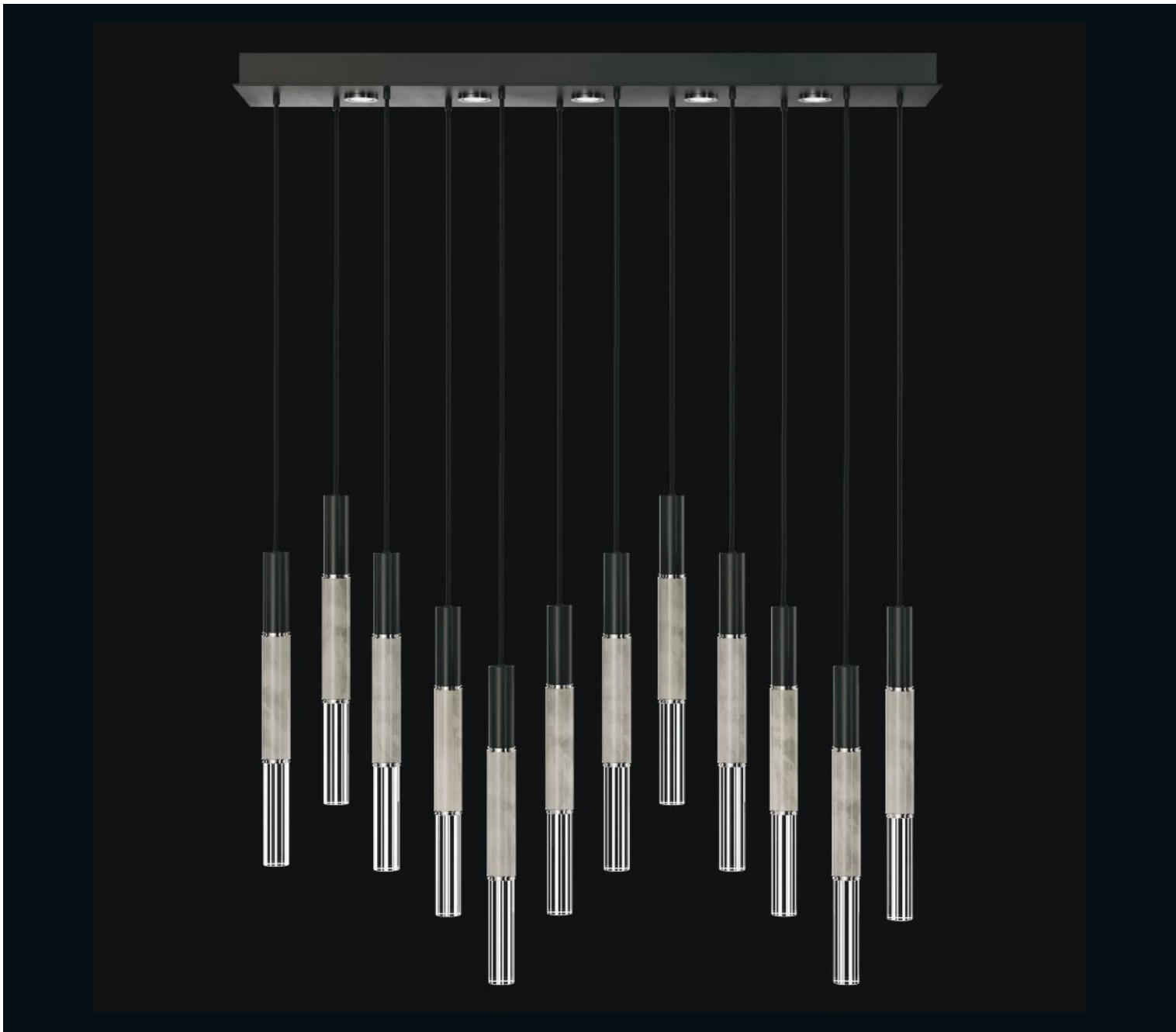




ANTONIA

Introducing the latest additions to our Antonia collection - sleek fixtures that beautifully complement Antonia's softly curved lighting series. These stunning fixtures showcase exceptional craftsmanship seamlessly transitioning from parchment to exquisite glass resulting in a captivating light emission.

With a contemporary design incorporating metals this collection pays homage to luxury and elegance from the past while offering sophisticated beauty for today's discerning audience. The Antonia Collection features a variety of exquisite hand-applied finishes including our newest Soft Ombré Bronze and Soft Ombré Silver. Choose from two parchment colors—Charcoal and Smoke—or opt for our Special-Order options: Mink, Burnt Orange or Navy with Gold highlights. For a more minimalist look the fixtures are also available without parchment.



61"W RECTANGULAR PENDANT

Model #

100019-122 Standard Black Iron/Nickel/Smoke Parchment

Dimensions

27.75" (70 cm) H x 61" (155 cm) W x 11" (28 cm) D

Min Ht: 31" (79 cm) Max Ht: 127" (323 cm)

Electrical

Canopy: US/INTL: MR16, GU10, 6.5w max (Qty. 5)

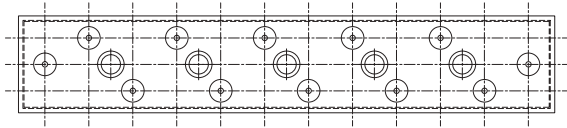
Fixture: US/INTL: Integrated LED, 3w, 3000K (Qty. 12)

Total RAW Lumens: 6700

Not suitable for vaulted ceilings.

Includes 8' Adjustable braided cord.

Upper & lower lights can be wired independently for single or dual light control.



CANOPY VIEW

FINISH/PARCHMENT OPTIONS

See Page 11 for finish and parchment options and ordering instructions.



31"W ROUND PENDANT

Model

100018-312 Standard Gold Leaf/Brass/Smoke Parchment

Dimensions

27.5" (70 cm) H x 31" (79 cm) D

Min Ht: 31" (79 cm) Max Ht: 127" (323 cm)

Electrical

Canopy: US/INTL: MR16, GU10, 6.5w max (Qty. 7)

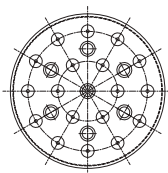
Fixture: US/INTL: Integrated LED, 3w, 3000K (Qty. 18)

Total RAW Lumens: 9800

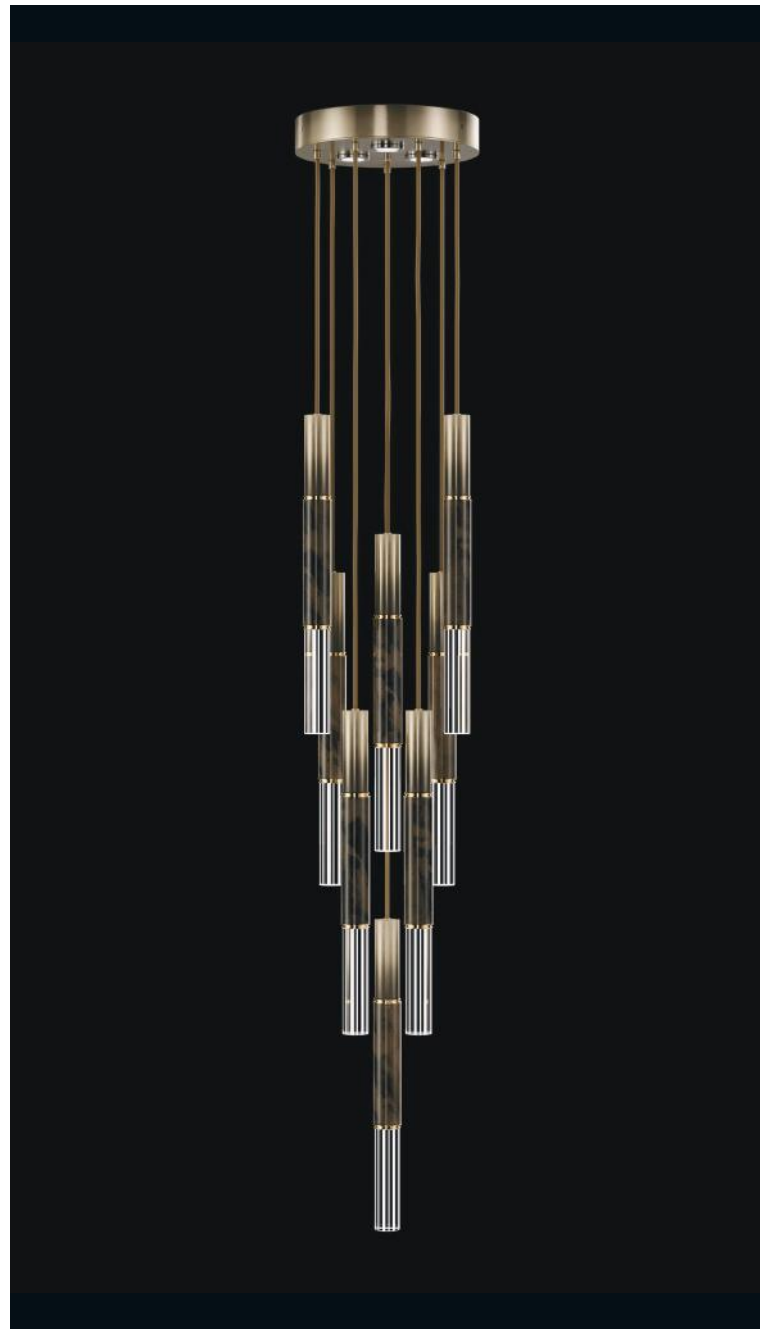
Not suitable for vaulted ceilings.

Includes 8' Adjustable braided cord.

Upper & lower lights can be wired independently for single or dual light control.



CANOPY VIEW



16"W ROUND PENDANT

Model

100017-611 Soft Ombré Bronze/Brass/Charcoal Parchment

Dimensions

27.5" (70 cm) H x 16" (41 cm) D

Min Ht: 31" (79 cm) Max Ht: 127" (323 cm)

Electrical

Canopy: US/INTL: MR16, GU10, 6.5w max (Qty. 3)

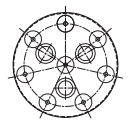
Fixture: US/INTL: Integrated LED, 3w, 3000K (Qty. 8)

Total RAW Lumens: 4300

Not suitable for vaulted ceilings.

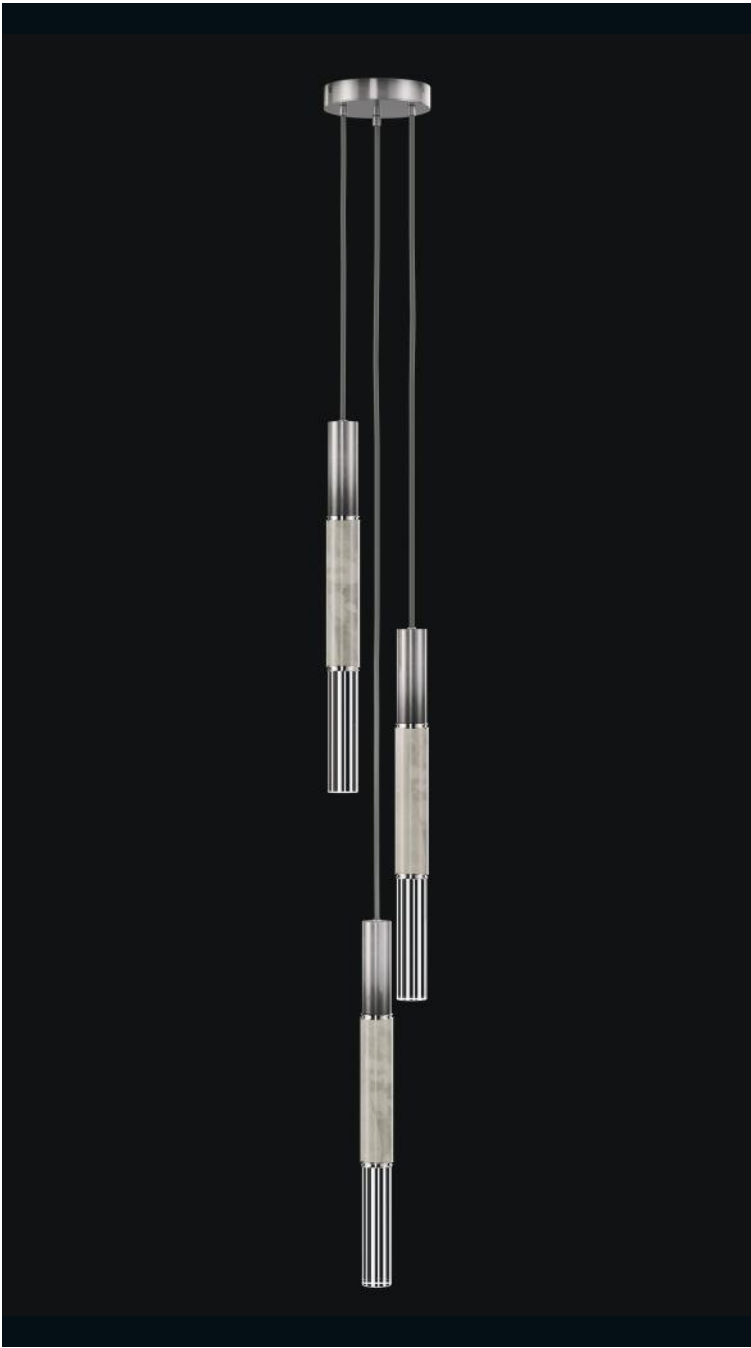
Includes 8' Adjustable braided cord.

Upper & lower lights can be wired independently for single or dual light control.



CANOPY VIEW

Parchments are ethically procured as by-products of the meat industry, and no animal is harmed for the purpose of its skin.
This is a natural material and therefore is subject to change from hide to hide.



8.5"W ROUND PENDANT

Model

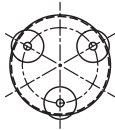
100016-722 Soft Ombré Silver/Nickel/Smoke Parchment

Dimensions

27.75" (70 cm) H x 8.5" (22 cm) D
Min Ht: 30" (76 cm) Max Ht: 126" (320 cm)

Electrical

US/INTL: Integrated LED, 3w, 3000K (Qty. 3)
Total RAW Lumens: 1050
Not suitable for vaulted ceilings.
Includes 8' Adjustable braided cord.



CANOPY VIEW



6.5"W DROP PENDANT

Model

100015-211 Standard Bronze/Brass/Charcoal Parchment

Dimensions

27.75" (70 cm) H x 6.5" (17 cm) D
Min Ht: 30" (76 cm) Max Ht: 126" (320 cm)

Electrical

US/INTL: Integrated LED, 3w, 3000K (Qty. 1)
Total RAW Lumens: 350
Not suitable for vaulted ceilings.
Includes 8' Adjustable braided cord.



CANOPY VIEW

FINISH/PARCHMENT OPTIONS

See Page 11 for finish and parchment options and ordering instructions.



34"H SCONCE

Model

100020-613 Ombre Bronze/Brass/Mink Parchment*

Dimensions

34" (86 cm) H x 4.75" (12 cm) W x 4" (10 cm) D

ADA Compliant

Electrical

US/INTL: Integrated LED, 3w, 3000K (Qty. 2)

Total RAW Lumens: 700

Can be mounted horizontally or vertically.



21.75"H SCONCE

Model

100021-3110 Standard Gold Leaf/Brass/Navy & Gold Parchment*

Dimensions

21.75" (55 cm) H x 4.75" (12 cm) W x 4" (10 cm) D

ADA Compliant

Electrical

US/INTL: Integrated LED, 3w, 3000K (Qty. 1)

Total RAW Lumens: 350

Can be mounted facing up or down.

Parchments are ethically procured as by-products of the meat industry, and no animal is harmed for the purpose of its skin. This is a natural material and therefore is subject to change from hide to hide.

*Special Order parchment - upcharge applies



52" LINEAR PENDANT

Model #
924140-311 Standard Gold Leaf/Brass/Charcoal Parchment

Dimensions
H 10" (25 cm) W 52" (133 cm) D 5" (13 cm)



51.5" LINEAR PENDANT

Model #
923140-612 Soft Ombré Bronze/Brass/Smoke Parchment

Dimensions
H 28.5" (72 cm) W 51.5" (131 cm) D 5.5" (14 cm)



16" ROUND PENDANT

Model #
923840-611 Soft Ombré Bronze/Brass/Charcoal Parchment

Dimensions
H 28.5" (72 cm) W 16" (41 cm)



7" ROUND PENDANT

Model #
923340-122 Standard Black Iron/Nickel/Smoke Parchment

Dimensions
H 28.5" (72 cm) W 7" (18 cm) D 3" (7 cm)



28" LSF SCONCE

Model #
922750-722 Soft Ombré Silver/Nickel/Smoke Parchment

Dimensions
H 28" (71 cm) W 7" (18 cm) D 4" (10 cm)



29.75" TABLE LAMP

Model #
923010-611 Soft Ombré Bronze/Brass/Charcoal Parchment

Dimensions
H 29.75" (76 cm) x W 7.75" (20 cm)

FINISH/PARCHMENT OPTIONS
See Page 11 for finish and parchment options and ordering instructions.

HOW TO ORDER FROM THE ANTONIA COLLECTION

1

SELECT MODEL #

Model # #####-xxx

1. Model #

2. Finish

3. Metal Ring

4. Parchment

2

FINISH OPTIONS

ANTONIA COLLECTION FINISH OPTIONS

Soft Ombre Bronze (-6xx)



Soft Ombre Silver (-7xx)



Also available in our five
STANDARD FINISH OPTIONS

Black Iron (-1xx)



Bronze (-2xx)



Gold Leaf (-3xx)



Silver Leaf (-4xx)



Soft Gold Leaf (-5xx)



3

METAL RING OPTIONS

Brass (-x1x)



Polished Nickel (-x2x)

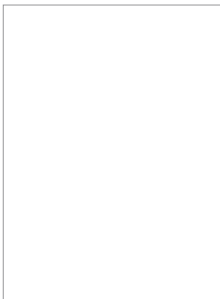


4

PARCHMENT OPTIONS

STANDARD PARCHMENTS:

No upcharge standard collection lead time applies.



No Skin (-xx0)



Charcoal (-xx1)



Smoke (-xx2)

*SPECIAL ORDER PARCHMENTS:

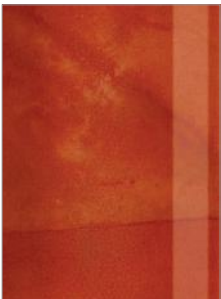
10% upcharge applies 8-10 week lead time.



Mink* (-xx3)



Navy/Gold* (-xx4)



Burnt Orange* (-xx5)



CUSTOMER SERVICE customerservice@finearthl.com **SALES** sales@finearthl.com **SHOWROOMS** DALLAS HIGH POINT MIAMI
3840 WEST 104TH STREET STE. 20 HIALEAH FL 33018 **T** 305.821.3850 **FINEARTHL.COM**

© 2023 Fine Art Handcrafted Lighting. All Rights Reserved. There is only one source of authentic Fine Art Handcrafted Lighting™ and Fine Art Lamps® products. There are many who attempt to emulate or copy our proprietary designs to benefit from our company's heritage reputation and prestige. When specifying lighting by Fine Art Handcrafted Lighting the professional is assured of its authenticity and exclusivity. Fine Art Handcrafted Lighting vigorously defends its intellectual property in the United States and internationally to protect our clients from counterfeit product and inferior quality copies.



Made in America