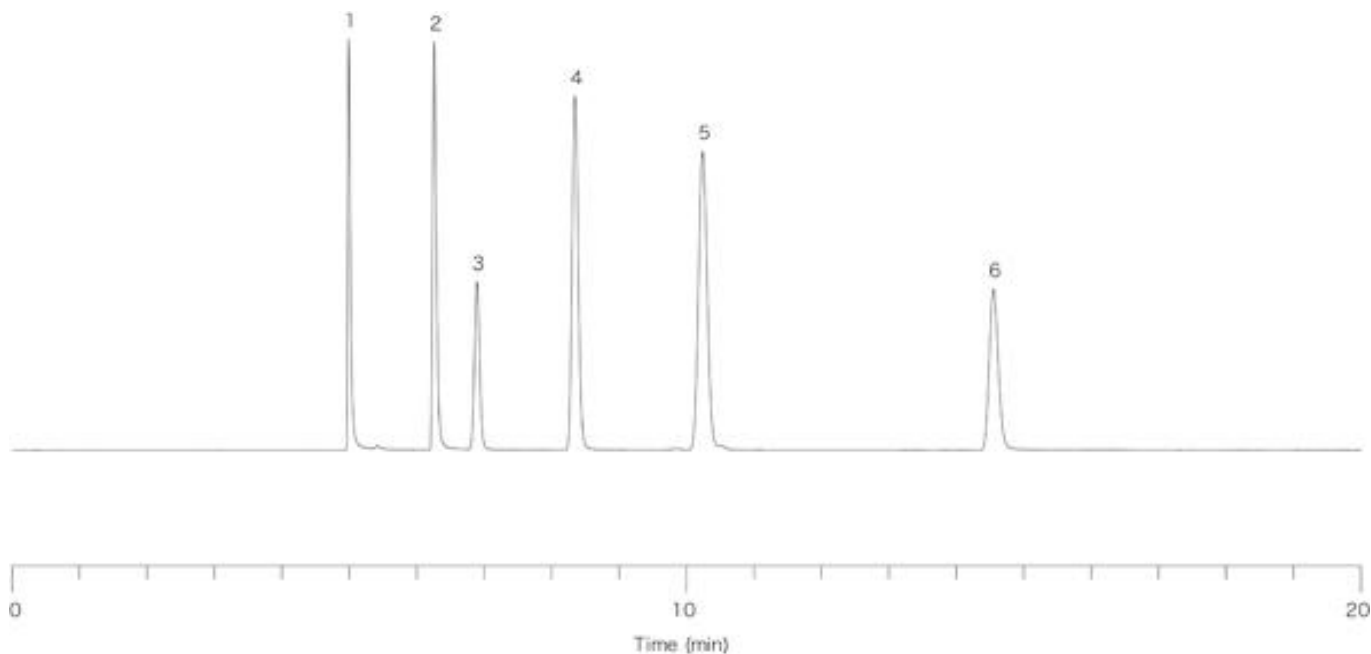


InertSearch™ for GC

InertCap® Applications

Amines

Data No. GA068-0000



System : GC/FID
Column : InertCap for Amines
0.32mmI.D. × 60m
Column Temp. : 60°C
Carrier Gas : He 150kPa
Injection : Split 1 : 50
Detection : FID
Sample : Amines

Solutes : 1. Monomethylamine (MMA)
2. Dimethylamine (DMA)
3. Trimethylamine (TMA)
4. iso-Propylamine
5. n-Propylamine
6. Diethylamine