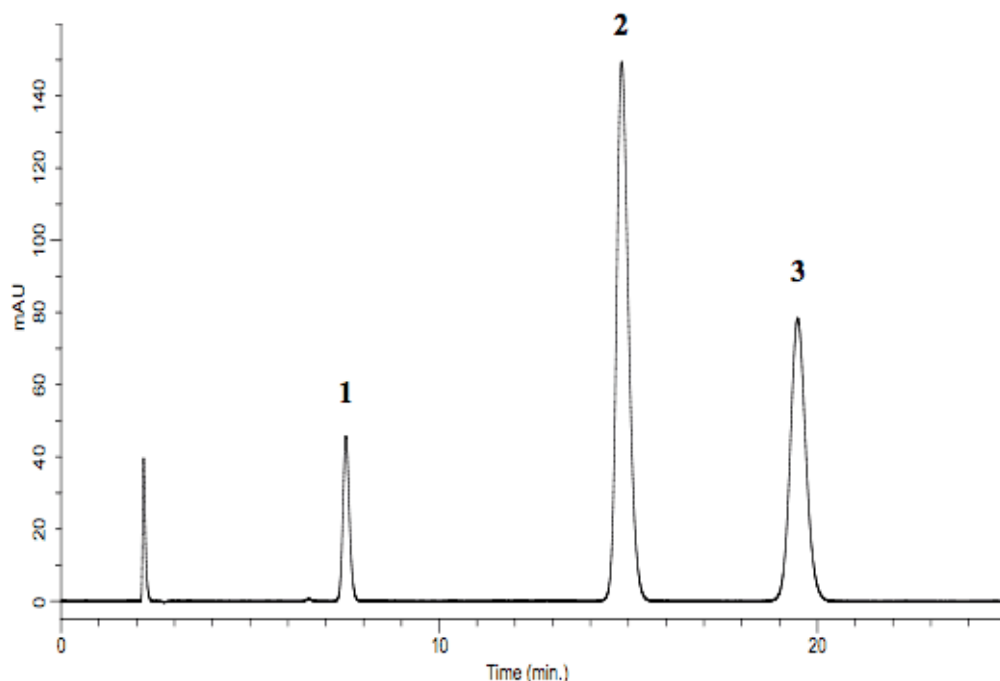


## Analysis of Scopolia Standard (Under the Condition of Japanese Pharmacopoeia)

Data No. LA558-0696



\*Resolution: Peak 1-2; 16.67, Peak 2-3; 7.11

System	: GL-7400 system	Solutes	: 1. Scopolamine Hydrobromide (0.10 mg/mL)
Column	: Inertsil ODS-SP (5 $\mu$ m, 150 $\times$ 4.6 mm I.D.)		2. Atropine Sulfate (0.50 mg/mL)
Column Cat. No.:			3. Brucine (0.06 mg/mL)
Eluent	: A) CH <sub>3</sub> CN B) 50 mM KH <sub>2</sub> PO <sub>4</sub> , 1 % (C <sub>2</sub> H <sub>5</sub> ) <sub>3</sub> N, v/v (pH 3.5, H <sub>3</sub> PO <sub>4</sub> ) A/B = 10/90		
Flow rate	: 0.9 mL/min		
Col. Temp.	: 30 °C		
Detection	: UV 210 nm (GL-7450 UV detector)		
Injection Vol.	: 10 $\mu$ L		
Sample	: Scopolia Standards		