

GET SMART

THE C^oNNECTED SHOP



**SMART PADLOCK BLUETOOTH
USER MANUAL**

Welcome to the Smart Padlock Bluetooth User Manual. Your easy, step-by-step guide to set up and connect your Smart Padlock Bluetooth. The device is designed to be easy-to-use and to replace all average padlocks with this modern Bluetooth padlock.



SUMMARY

I. Device Set Up



- 1. Set-up Guide
 - a) Set-up Video

II. Device Functions



- 2. Remote
 - a) Unlock Device

III. Mobile App Connection



- 3. Registering on the Mobile App
 - a) Downloading the Mobile App
 - b) Adding Devices

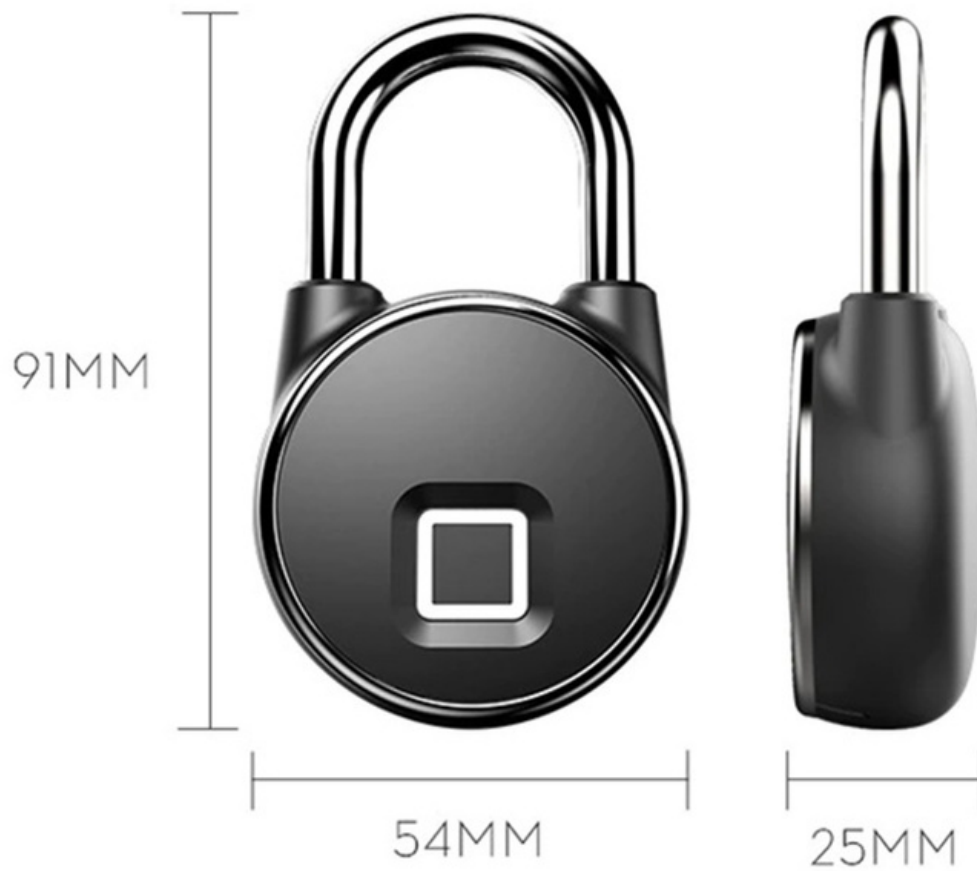
PACKAGING DETAILS



1 Smart Padlock Bluetooth

2 USB Charger

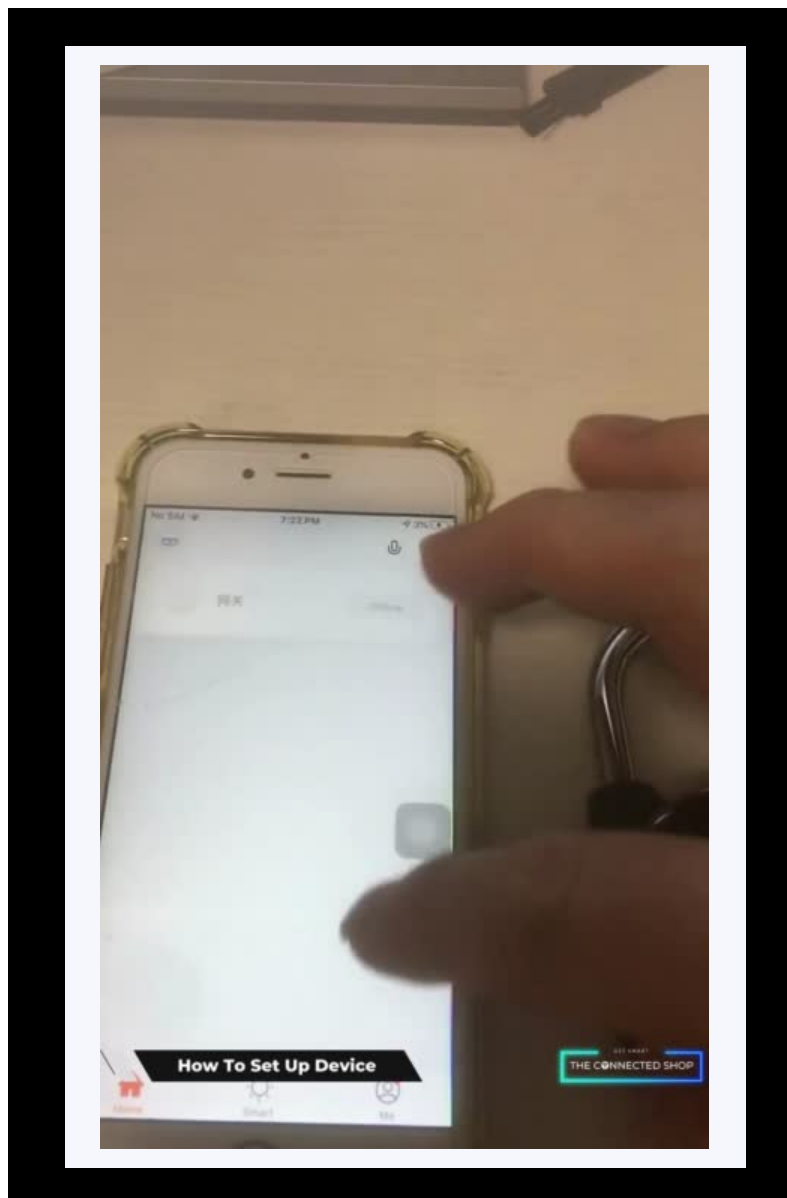
STEP-BY-STEP SET-UP GUIDE



1. SET UP



- a. Remove all the items from its original box and charge the device for a couple of hours or up until the light indicator turns off before using it
- b. Proceed to accessing the video below on how to set up the device via the mobile app in order to control it
- c. To input a fingerprint, go to 'Set' on the mobile app and press 'Finger management'
- d. Follow the in-app instructions in adding a fingerprint
- e. To delete a device on the mobile app, press the 'edit' icon found on the upper-right corner of the screen
- f. Select 'Remove Device' to disconnect

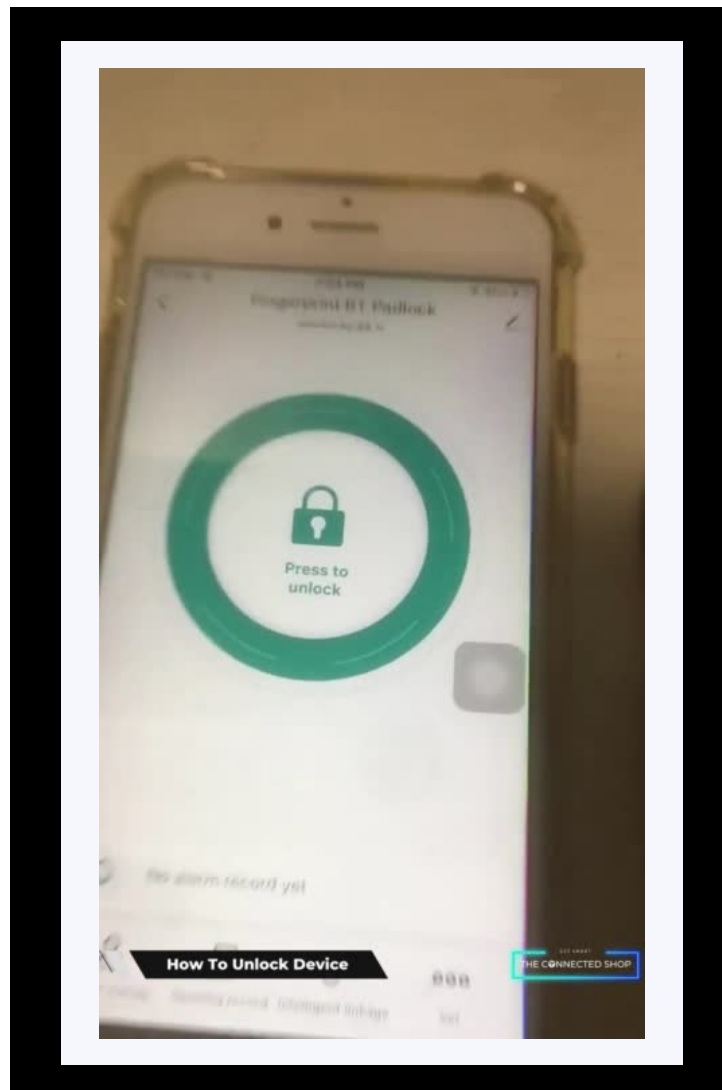


2. INITIAL STATE OF YOUR DEVICE



a) Unlock Device

- To remotely unlock the device via the mobile app, open the app
- Locate the device
- Press and hold the unlock button found on the home page of the device/lock
- To unlock it using a fingerprint, place the registered finger on the padlock sensor
- Gently put pressure on the sensor until the device reads the fingerprint and unlocks the padlock



3. MOBILE APP CONNECTION



a) Downloading the App

Download the application on the Google Play Store or Apple AppStore by searching “Tuya Smart” or by scanning the QR code below

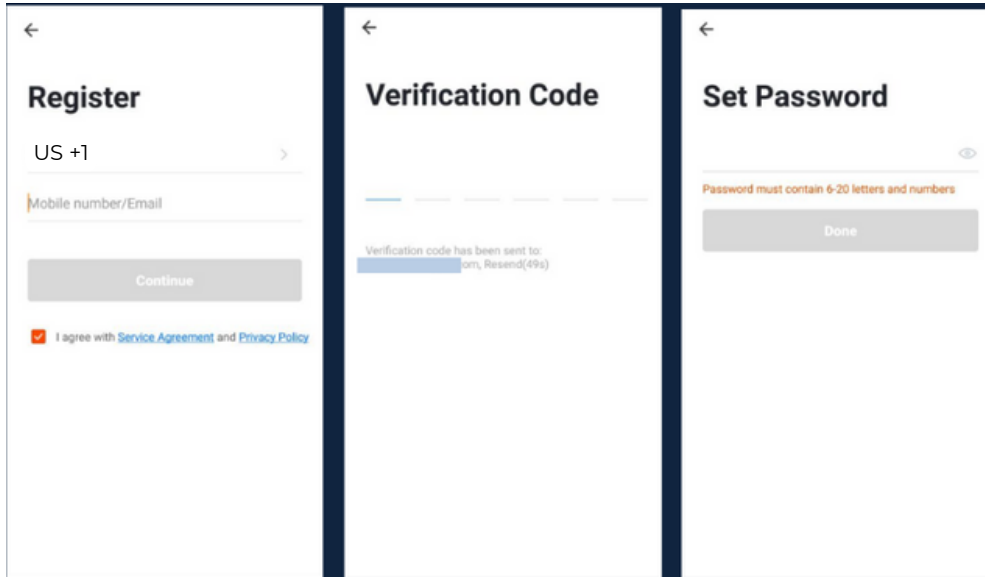


b) Logging in and Registering

After Downloading the App

- Select the country from which you will be using the device, usually the app will prompt it automatically
- You will be redirected to register via email where a verification code will be sent and proceed to enter it on the app in the allotted time limit
- Once the verification code has been entered into the app, you will be asked to set your password
- You will then have full access to the Tuya Smart Platform

3. MOBILE APP CONNECTION

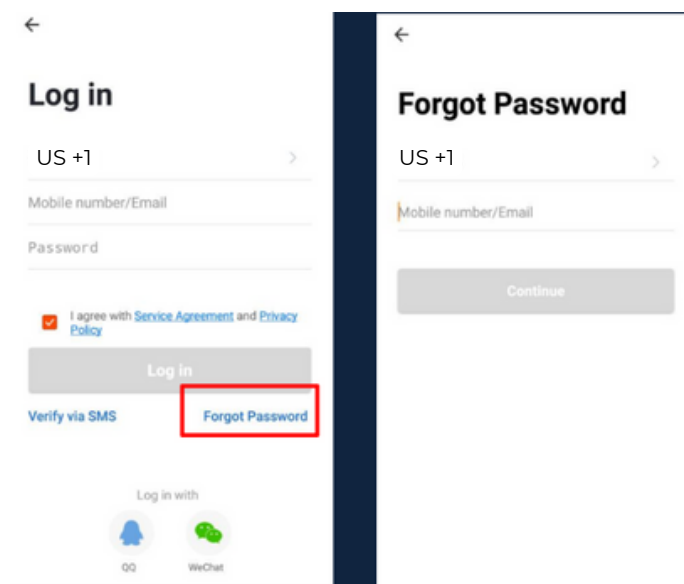


Should you be an existing user to the Tuya Smart Platform, log in using your email and password from the login page.

c) Resetting your Password

In case you have forgotten your password and need to reset it, please follow the steps below:

- On the Login Page, when prompted for your email & password, click “Forgot Password” button located below the “Login” button
- Select the country from which you will be using the device, usually the app will prompt it automatically




3. MOBILE APP CONNECTION



Verification Code

Verification code has been sent to: 86-15219500857,
Resend(57s)

Set Password



Password must contain 6-20 letters and numbers

Done

- You will be prompted to enter the email where a verification code will be sent and proceed to enter it on the app in the allotted time limit
- Once the verification code has been entered into the app, you will be asked to set your new password
- You will then have full access to the Tuya Smart Platform

In the case that you would like to change your password from the app, please follow the steps below:

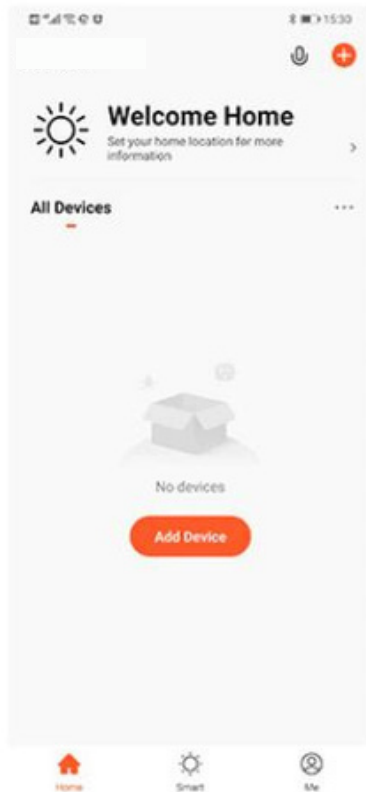
- Tap the 'Me' tab on the bottom right hand corner of your screen
- Click 'Change Login Password'
- You will be taken to the 'Account Verification' page and then tap 'Get Verification Code' button
- This will send a verification to your registered email
- Enter the code in the app
- Proceed to enter the new password

3. MOBILE APP CONNECTION



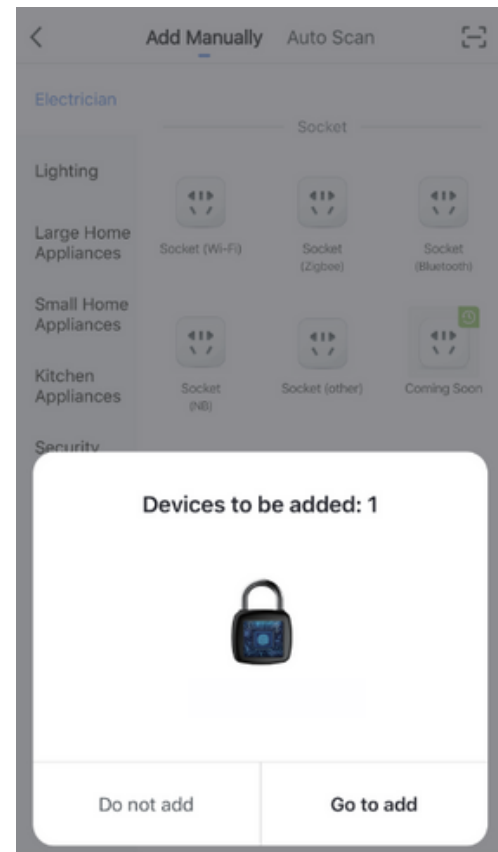
d) Adding Devices

To add devices on the app, please follow the instructions below. Your devices and phone must be connected to the same Wi-Fi network in order for this to work.

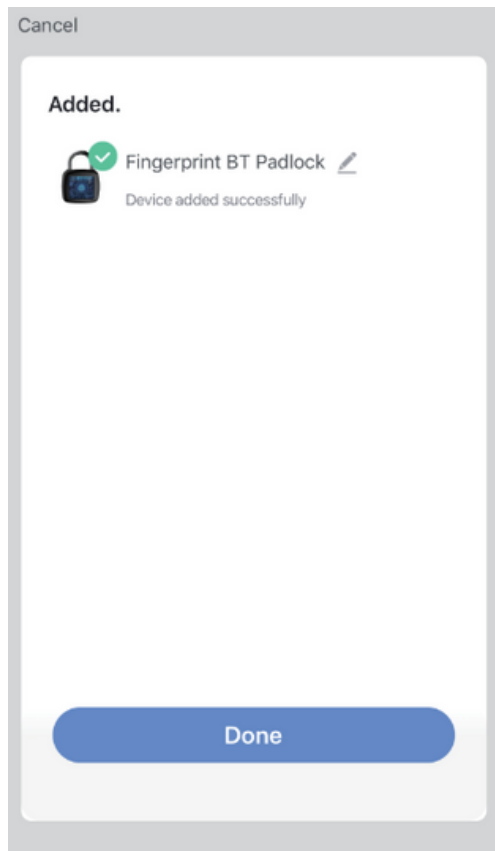


- To add a device, click the 'Add Device' or tap the 'Plus' button on the top-right corner of your screen and select 'Add Device'

- Activate your padlock by resting your finger on the sensor. The shackles will unlock on its own; lock it and the app will automatically detect the action and will show a nearby device
- Enable Bluetooth to proceed

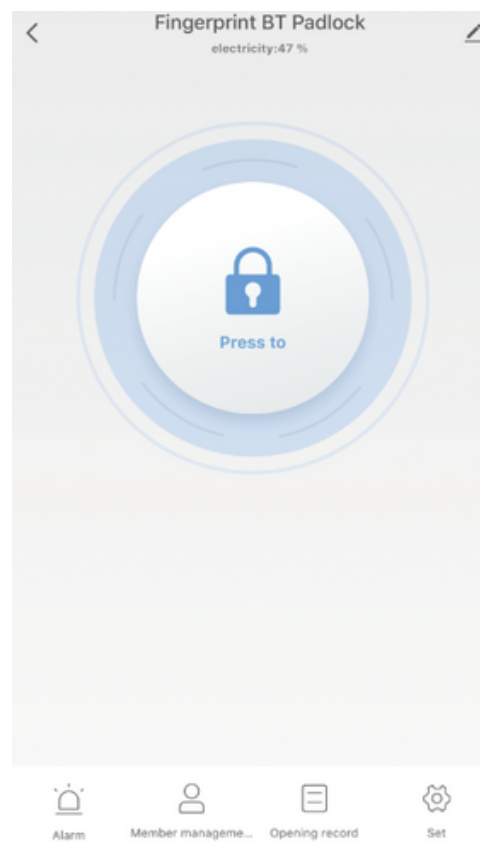


3. MOBILE APP CONNECTION



- Wait for the app to finish searching for the lock until a successful message pops up.

- Finish adding your device. Once this has been done successfully, you can go on to change the name of your device and control its functions



Congratulations!

You have successfully set up your very own Smart Padlock Bluetooth.

Thank you for being a valued customer of The Connected Shop.

www.theconnectedshop.com





THE CONNECTED SHOP