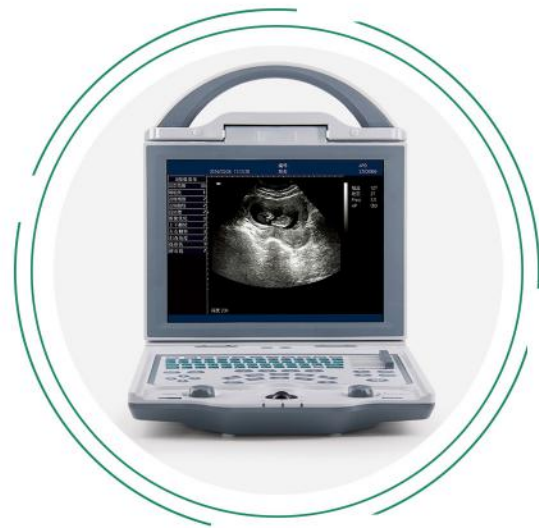


# 01

## ULTRASOUND



Black/White Ultrasound



Color Doppler Ultrasound

### ZT-BW-U1 (Full digital B mode ultrasound scanner)

#### Features

- Rapidly one-key operation includes one-key storage, one-key browse and one-key print.
- One-key to light the keyboard, suitable for operation in dark room.
- Rotatable LED Panel to make the users get the best image visual sense from different angles.
- Practical function knob design, use A key to realize quick adjustment in a variety of conditions.
- Neoteric internal workstation multi-plan template, quickly finish data, report manage function, realize process multi medical histories function.
- OB measurement and analysis: 15 kinds OB table and several GA measurement, AFI, Fetus growth curve and OB report.
- GYN measurement and analysis: general GYN software packages and GYN report.
- Urological measurement and analysis: residual urine, volume of prostate, Urological report.



ZT-BW-U1

### ZT-BW-U2 (Full Digital Portable Ultrasound)

#### Features

- 10.4" LED Player
- Display modes: B, B/B, 4B, B+M, M
- External LED display have 16 kinds of pseudo color
- Permanent storage: 128 images
- Gain control: 8 segments TGC and overall gain can be adjusted respectively
- Frequency conversion: 2.5MHz/3.0MHz/3.5MHz/4.0MHz/5.0MHz five periods of frequency conversion; frequency range applies 5.5
- 1 groups of USB video output 1 groups of SVGA video output may mate with SVGA color monitor, 1 groups of PAL video output may mate with PAL monitor,
- Video image recording instrument and image workshop, etc
- USB Port: our machine can connect the common printer . Used to print the measurement report page
- Optional laser printer can print the generated report



ZT-BW-U2

## ZT-BW-U4 (Laptop Ultrasound Scanner)

### Features ◆

- 15 inch LCD screen
- Full digital imaging technology, crystal-clear Image
- 2 probe connector Silica gel backlight gravure laser keyboard
- 8G large volume image storage
- Built-in battery(can work more than 5 hours)
- Also can customized the color, such as white & gray
- Optional:Transvaginal, linear, rectal, micro-convex probe; Biopsy; Trolley; Printer
- Standard configuration:One host, one convex probe, one aluminum trunk
- Cine loop



ZT-BW-U4

## ZT-BW-U6 (Full Digital B/W Ultrasound Machine)

### Features ◆

- 12.1 inch high resolution medical monitor with 90 viewing angle
- Exclusive employ double wave form imaging technology
- Outstanding portable model,compact and streamlined design
- Double activated transducer connectors,transducer auto-freeze protection
- All-round adjusting knob, efficient and fast
- Support image magnification and full screen display
- Support multiple measurement software package
- Support PW mode and spectrum full screen display
- Built-in lithium battery,optional trolley and suitcase
- Optional laser printer can print the generated report



ZT-BW-U6

## ZT-BW-U5 (Full Digital B/W Ultrasound Machine)

### Features ◆

- 10-inch high resolution medical LED monitor
- Two activated transducer connectors
- Two USB ports
- Auto-freezing function
- One key full screen function
- Abundant measurement software packages
- Auto-generation BMP format report
- Support USB import and export
- Laser/Ink Jet printer module optional
- Puncture guidance technology
- Imaging Modes:B, 2B, B/M, M, 4B



ZT-BW-U5

## ZT-BW-UP (Wireless Probe Type Mini Ultrasound Scanner)

### Features ◆

- Scanning mode: Electronic array
- Display mode: B, B/M, color,PW, PDI
- Depth: Convex 100mm-280mm, Linear 20mm-55mm
- Measure: Distance, area, circumference, angle heart rate, obstetrics
- Image frame rate: 20f/s
- Frequency: Convex/micro-convex probe 3.5/5.0MHz,Linear probe 7.5 MHz/10.0MHz or 10/14MHz, Transvaginal Probe 6.5MHz, 4D bladder probe 3.5MHz,4D scan probe 3.5MHz
- Battery working time: Convex/Linear probe 3 hours, 4D Scan probe and built-in screen probe 2 hours
- 4D scan probe measuring range: 10ml - 2000ml
- 4D scan probe automatic measurement inaccuracies: <5%
- Screen size of built-in screen probe: 3.5 inches



ZT-BW-UP

## ZT-BW-U7 (Digital Trolley Ultrasound Scanner)

### Features ◆

- Powerful measurement & calculation software packages
- 8-Segment TGC adjustment
- 15 inches LCD screen
- OB measurements: BPD, GS, CRL, FL, AC, HC, etc
- Permanent function of image store: 32 images
- Back-lit keyboard
- 2 probe connectors
- Standard configuration: One host, one convex probe, one aluminum trunk
- Probe automatic identification



ZT-BW-U7

## ZT-BW-U9 (Full Digital Ultrasonic Diagnostic System)

### Features ◆

- 8-Segment TGC Adjustment
- Internal Standard PC Keyboard
- Digital Encoder Knobs
- Monitor supporting 180° free adjustment
- USB2.0、DVD RW、Dicom 3.0、probes automatic identification
- Full digital engine with non tortured echo ensuring high definition images
- Originating from advanced ultrasonic imaging technology, the precise image guarantees the accuracy of the diagnostic result
- Image storage: 320G Hard Disk Images can be saved in .bmp, .jpg, .dcm and .tif forms
- Measurement: cardiac, gynecology, obstetrics, blood vessel, hip, urology, abdomen, fetal heart, kidney, arterial, carotid artery, thyroid etc



ZT-BW-U9

## ZT-CW-U1 (Full Digital Color Doppler System)

### Features ◆

- 10.4 color LED full screen display, angle adjustable
- One-key-light keyboard function for black room use
- One button operatin including one-key storage image, one-key review, one-key print, etc.
- Quick look up stored image function, raise working efficiency
- Multi-functional knob design, realize one-key quick adjustment in multi-mode
- Optimize checking image function, realize 1-2 second response
- Itelligent user defined. one-key review and storage function
- 1-Station integral work staion, connect to network, realize one- key print
- Large internal 16G disk storage capacity, permanent massive storage, without loss when power off. BMP format image ≥ 10,000 frames, PNG format image ≥ 100,000 frames
- Image: image optimization imaging technique



ZT-CW-U1

## ZT-CW-U2 (Full Digital Color Doppler System)

### Features ◆

- For diagnosis of abdomen, cardio, OB, small parts, vessels, etc.
- High resolution 15LCD; 128 elements probe; Support infinite complication under; real time scan (B, B+C, 2B, 4B); Color blood
- Optimized keyboard; Back light kcyboard
- Hard disk, search & browse patients data
- Powerful measuring & calculating software for clinical demands; DICOM3.0; Internal working station : support 2500GB
- Support store JPG, BMP, FRM format and CIN AVI movie format
- Note on full screen is available
- Standard English, customized for other languages
- Transmitted signal accuracy control
- Image: image optimization imaging technique



ZT-CW-U2

## ZT-CW-U3 (Full Digital Color Ultrasonic Diagnostic Instruments)

### Features ◆

- Large screen display
- Built-in lithium battery
- Small size, light weight, easy to carry, N.W.≤5kg
- Equipped with a wide range of probes for abdominal, obstetric, vascular, cardiac, small organ, urinary applications
- Built-in 4D module with optional 4D volume probe
- A variety of digital peripheral interfaces, provides a variety of image output methods
- PC platform, easy to operate, meet various software upgrades
- Convex extended imaging technology
- Linear array deflection/Trapezoidal imaging technology
- Speckle noise removal technology



ZT-CW-U3

## ZT-CW-U8 (Full Digital Color Doppler Ultrasound Diagnostic System )<Portable>

### Features ◆

- Compact and streamline design ,easy to carry
- 12-inch high resolution medical LED monitor
- Two activated transducer connectors
- Carotid IMT auto measurement
- Dual/Triplex synchronous technology
- Linear independent deflection imaging
- DICOM 3.0 supported
- Support multiple data transmission interface
- Optional built-in lithium battery
- Speckle Noise Reduction Technology
- Spatial Compounding Imaging Technology



ZT-CW-U8

## ZT-CW-U6 (Full Digital Color Doppler Ultrasound Diagnostic System )

### Features ◆

- High resolution medical LED monitor
- Light weight design, the net weight is 6.5KG, easy to take
- Built-in floating standard keyboard and backlit keyboard design
- Unique design for power key and reset key
- Based on PC platform, have abundant peripheral, can upgrade the system according to the customer requirement and be compatible with a various of printers
- Multi-language software for choose (Chinese, English, Spanish, Russian, Persian and French)
- Crystal clear 2D image and sensitive Color Doppler blood flow imaging system
- Built-in large capacity rechargeable Li-ion battery, standby time is up to 2 hours
- Built-in SSD (Solid State Disc) improves the stability and reading speed
- Can be updated to 4D (option)
- Support remote wireless image transmission, based on PC platform and ANDROID system (option)



ZT-CW-U6

## ZT-CW-U7 (Trolley Color Doppler Ultrasound Diagnostic System)

### Features ◆

- High resolution medical LED monitor
- Large angle rotatable free arm
- Rotatable and backlit keyboard design
- Built-in floating standard keyboard
- Special USB interface design on the left side of control panel
- Four active probe connector
- Light weight design, the net weight is 65kg
- Based on PC platform, have abundant peripheral, can upgrade the system according to customer Requirement and be compatible with a various of printers
- Multi-language software for choose (Chinese, English, Spanish, Russian, Persian and French)
- Crystal clear 2D image and sensitive Color Doppler blood flow imaging system
- Built-in 500G large capacity hard disc, mass storage
- Can be updated to CW function, panorama imaging, 4D (option), etc



ZT-CW-U7

## ZT-CW-U9 (Full Digital Color Doppler Ultrasonic Diagnostic System)

### Features ◆

- 15 inch high resolution LED monitor
- 8.4 inch touch screen
- Four activated transducer connectors
- Standard configured gel heating cup and keyboard
- 2D, M, PW, CW, TDI, Elastic, AMM, CMM, 3D/4D
- THI, SRI, TSI, FCI, EFov, Panoramic, HR flow, B-steer
- Support local and global amplification
- Support PW auto track and auto calculation
- Preposed USB ports, supporting multi-data transmission
- Multiple pregnancies measurement, Fetal growth curve, OB table are standard configured
- Color focus automatic tracking, Dual Live and Multi-synchronization technologies



ZT-CW-U9

## ZT-CW-U10 (Full Digital Color Doppler Ultrasound Diagnostic System)

### Features ◆

- 19-inch high resolution LED monitor
- 10.4-inch touch screen
- Four activated transducer connectors
- Standard configured gel heating cup
- Carotid IMT auto measurement
- Optional 3D/4D imaging
- Dual/Triplex synchronous technology
- Spectrum full screen display
- Support Multi-parameter presets
- DICOM 3.0 supported
- Support multiple data transmission
- Support HDMI output interface



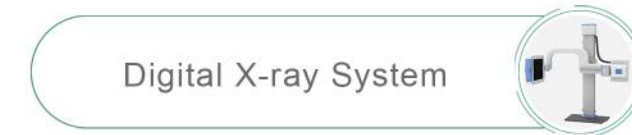
ZT-CW-U10

# 02

## X-RAY MACHINE



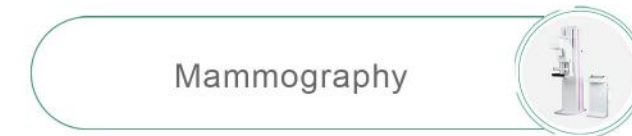
Analog X-ray Machine



Digital X-ray System



C-arm



Mammography



X-ray Accessories

## ZT-XR-01 (Mobile X-ray Machine)

### Features ◆

- ❑ Generator output: 5.0kW
- ❑ kV range: 40 kV - 120 kV in 1kvsteps; mA range: 25~103mA
- ❑ Exposure time: 4 films per min, less than 20 ms perfilm
- ❑ X-ray tube: Stationary anode tube with a focal spot of 1.5\*1.5mm
- ❑ Collimator: Bright field light beam collimator with 120 W halogen lamp and auto shut-offfacility
- ❑ Power requirements: Single phase 220 V +/- 10% Voltage tolerance; 50 Hz power supply
- ❑ Mobile stand: Light-weight, low height mobile and easily maneuverable stand
- ❑ The mobile radiographic unit also include a handheld control and a microwave wireless remote control for the 20-meter microwave remote Without the restriction of Barriers and directional, different from the infrared remote control . Grids reduce the fog line filters and raise the degree of scatteringcontrast.



ZT-XR-01

## ZT-XR-02 (320mA X-ray Machine)

### Features ◆

- ❑ High cost-effective, suitable for primary hospital to realize digitalization
- ❑ The floating table with bucky stand can meet the photographic requirements of different standing and lying positions. The bed floating and electromagnetic lock design makes it convenient for the accurate position of the lying patient, operation is much more convenient and flexible
- ❑ The leading domestic high power compact high frequency X-ray generator and high frequency power inverter makes the machine much more compact and more convenient without the extra high-voltage generator and cable
- ❑ The application of the KV and MA digital closed-loop control technology and the real time control of the microprocessor ensure the accuracy and repeatability of the dose
- ❑ The multiple automatic protection features and fault tips ensure safety during the operation process
- ❑ It also can be made one kind of vehicle-mounted model. Mobile medical examination and emergency use



ZT-XR-02

## ZT-XR-P5 (Portable X-ray Machine)

### Features ◆

- ❑ Deft and concise
- ❑ 6 periods of digital LED display
- ❑ Failure self-protection, self-diagnosis
- ❑ High precision control of tube voltage, tube current
- ❑ 48 kinds of presupposed anatomy memory pattern choice
- ❑ Accuracy control method of simulation and double digital loops
- ❑ X-ray tube complete surrender by lead for protect X-ray leaking
- ❑ Exposure by hand switch
- ❑ Exposure by remote control
- ❑ Exposure by touch screen
- ❑ 10.4 inch touch screen

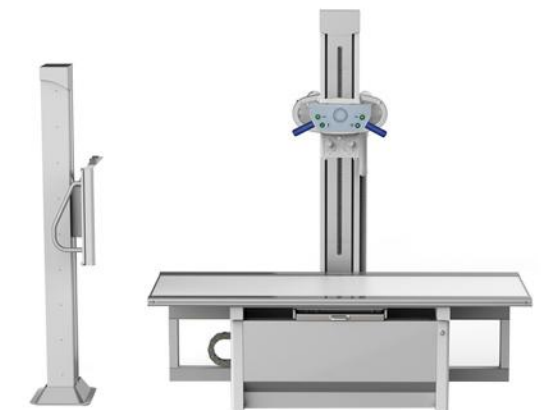


ZT-XR-P5

## ZT-XR-20/50 (200mA/500mA X-ray Machine)

### Features ◆

- ❑ X-ray generator
- ❑ Rich DR upgrade reserve interface
- ❑ Fault self-diagnosis and protection
- ❑ Automatic calibration of tube current
- ❑ X-ray tube has the function of filament dormancy
- ❑ AEC function, different ionization chamber as optional
- ❑ Analog - digital double - loop control, simple operation, high intelligence
- ❑ High kV, high current, high power, strong penetration, able to handle obese patients



ZT-XR-20/50

## ZT-DR-P5N (Mobile/Portable DR)

### Features ◆

- ❑ Deft and concise
- ❑ 6 periods of digital LED display
- ❑ Failure self-protection, self-diagnosis
- ❑ High precision control of tube voltage, tube current
- ❑ 48 kinds of presupposed anatomy memory pattern choice
- ❑ Accuracy control method of simulation and double digital loops
- ❑ X-ray tube complete surrender by lead for protect X-ray leaking
- ❑ Exposure by hand switch
- ❑ Exposure by remote control
- ❑ Exposure by touch screen



ZT-DR-P5N

## ZT-DR-05 (Digital Radiography Fluoroscopy System)

### Features ◆

- ❑ Screen size: 19 "(48cm)
- ❑ Type: diagnostic, LCD, black and white
- ❑ Resolution: 1280x1024
- ❑ Maximum brightness: 1000cd / m
- ❑ It has standard DICOM 3.0 interface, supporting film printing, output, storage, barrier-free docking hospital PACS system.
- ❑ It also can be made one kind of vehicle-mounted model. Mobile medical examination and emergency use



ZT-DR-05

## ZT-DR-01 (Flexible Movement 200mA DR)

### Features ◆

- ❑ Apply with domestic brand Flat panel detector, which could give perfect digital images directly.
- ❑ The detector could be rotated  $\pm 45$  degree along the axis direction, to satisfy the different photograph requirement of every body parts, such as Ankle joint, lateral spine
- ❑ Case registration: Auto registration, equipped with Dicom Worklist SCU. To simplify the input process for doctors, greatly reduce work and greatly improve the working efficiency
- ❑ Image Acquisition: Automatic window adjustment, Automatic cropping, Automatic transmit
- ❑ Be equipped with 19" LCD high resolution monitor screen.
- ❑ Human graphical touchable screen
- ❑ Be equipped with the microphone and remote exposure control
- ❑ Be equipped with various set of infrared facilities to protect the machine from the mis-operation of the doctors
- ❑ The self-designed and manufactured electric U-arm mainframe can move up and down, and rotate in a wide range



ZT-DR-01

## ZT-DR-20/50 (200mA/500mA DR System)

### Features ◆

- ❑ X-ray generator
- ❑ Rich DR upgrade reserve interface
- ❑ Fault self-diagnosis and protection
- ❑ Automatic calibration of tube current
- ❑ Infrared photoelectric switch for four-way table
- ❑ X-ray tube has the function of filament dormancy
- ❑ AEC function, different ionization chamber as optional
- ❑ Analog - digital double - loop control, simple operation, high intelligence
- ❑ High kV, high current, high power, strong penetration, able to handle obese patients



ZT-DR-20/50

## ZT-CRM-01 (5kW Mobile Digital C-arm)

### Features ◆

- High quality combined high-frequency and high-voltage X-ray generator, greatly reducing the X-ray exposure
- It has the function of automatic tracking of perspective kV and Ma, which makes the image brightness and clarity in the best state automatically
- The real-time and continuous pulse perspective mode has small ray dose, but the image is clearer, which can meet the needs of high-precision and difficult minimally invasive surgery, and can effectively protect medical care Safety of personnel and patients
- The host operation interface of the human graphical LCD touch screen is adopted to make the operation more intelligent and convenient
- The design of the hand-held controller makes the operation of the instrument more convenient
- The 9-inch three field image intensifier is used, with stable and reliable quality and good image definition



ZT-CRM-01

## ZT-CRM-05 (12kW Mobile Digital C-arm)

### Features ◆

- High-frequency generator with Super High Power and micro-focus, optimizes digital images
- Leading world-class continuous pulse fluoroscopy, intelligent exposure control, achieving extremely low radiation dose
- Multi-leaf and vertical light control reduce the soft X-ray effectively and the skin dose dramatically.
- Multi-working patterns to meet various clinical needs
- High-resolution and dual medical LCD monitors improve image quality dramatically.
- Imported well-known image intensifier and digital CCD camera provide high-quality and high-resolution images
- Powerful digital graphic workstation with standard configuration of DICOM 3.0 connected to network perfectly, supports dual registrations of Worklist registration and manual registration.
- Two panels of human graphical LCD touch screen, intelligent and fast operation; Dual kinetic control system and double foot brake design for exposure, meeting the demands of clinical operations greatly



ZT-CRM-05

## ZT-XMR-01 (Analog Mammography System)

### Features ◆

- Unique adopt all-solid-state high frequency high voltage generator. This technology has got the PATENT IN THE USA
- The safest mammography at high voltage. There is a built-in X-ray ignition coil in host machine, high-voltage power lines less than 25cm
- Electric Isocentric rotating C-arm with a unique automatic back to center function
- Optional the third generation imported moving grid
- Optional auto/semi-auto/manual, three kind exposure modes
- Optional image output device: digital film printer
- A total of 3 pieces of large size full color LCD screen display, operation table 8 inch LCD screen is a touch key



ZT-XMR-01

## ZT-DMR-01 (Digital Mammography System)

### Features ◆

- Adopt specialized mammography flat panel detector digital imaging technology
- Full size digital mammography x-ray imaging
- Unique adopt all-solid-state high frequency high voltage generator. This technology has got the PATENT IN THE USA
- The safest mammography at high voltage. There is a built-in X-ray ignition coil in host machine, high-voltage power lines less than 25cm
- Mammography image acquisition control workstation, DICOM 3.0
- Electric Isocentric rotating C-arm with a unique automatic back to center function
- Optional the third generation imported moving grid
- Optional auto/semi-auto/manual, three kind exposure modes
- Optional image output device: digital film printer
- A total of 3 pieces of large size full color LCD screen display, operation table 8 inch LCD screen is a touch key



ZT-DMR-01



## ZT-FPD-1717V (Flat Panel Detector)

### Features

- Dual band (2.4 and 5 GHz) wireless support with easy sharing
- Long battery life and smart workflow
- Direct deposition CsI for better image quality with lower dose
- Wireless cassette detector per ISO 4090, fits in bucky
- 139 um pixel pitch, with 16 bit ADC for more image details
- Stable iSync+ Automatic Exposure Detection (AED)
- 17 x 17-inch Cassette-size



ZT-FPD-1717V

## ZT-FP-01 (X-ray Film Processor)

### Features

- Widely applicability medical diagnosis and experiment fields
- Microcomputer control system: one is LCD panel and another is knob computer panel
- Unique design for channel, prevent each channel to be crossed and improve the cyclic utilization of the liquid effectively
- Anti-oxidation and anti-crystallization configuration
- High-density roller packed together, guarantee transporting film safely and easy to clean
- High speed on rinsing. In theory, the film processor can develop 220 sheets per hour, it can meet requirements for any hospital
- High standard and high economic, control the temperature accurately, the mistake of temperature is less than 0.3degree. the consumption of water is reducing when it standby



ZT-FP-01

## ZT-MP-T1 (X-ray Thermal Printer)

### Features

- Maximum transmission density:  $\geq 3.8$
- Maximum reflection density:  $\geq 2.4$
- Substrate thickness:  $\geq 100 \mu\text{m}$
- Film thickness:  $\geq 120 \mu\text{m}$
- It is made by coating photosensitive emulsion/photosensitive material on one or both sides of a transparent film base, used for recording, displaying and storing medical images
- It is used to record radiographic images during X-ray photography
- 8\*10 (203\*254mm): 210 $\mu\text{m}$ , 100sheets/bag, 1000sheets/ctn
- 10\*12 (254\*305mm): 210 $\mu\text{m}$ , 100sheets/bag, 500sheets/ctn
- 11\*14 (280\*356mm): 210 $\mu\text{m}$ , 100sheets/bag, 500sheets/ctn
- 13\*17(330\*432mm): 210 $\mu\text{m}$ , 100sheets/bag, 500sheets/ctn
- 14\*17 (356\*432mm):210 $\mu\text{m}$ , 100sheets/roll, 1000sheets/ctn



ZT-MP-T1

## X-ray Protection Series



PROTECTIVE CLOTHING



PROTECTIVE COLLAR



PROTECTIVE MASK








PROTECTIVE GLASSES



PROTECTIVE GLOVES

# 03

## CLINICAL LAB ANALYZERS

-  Hematology Analyzer
-  Chemistry Analyzer
-  Urine / Electrolyte Analyzer
-  Elisa Reader/ Washer
-  Other Analyzers

### ZT-HM-3A (3-Part Hematology Analyzer)

#### Features

- Principle: Electrical impedance for counting and SFT method for hemoglobin  
Parameters: WBC, LYM#, MID#, GRA#, LYM%, MID%, GRA%, RBC, HGB, HCT, MCV, MCH, MCHC, RDW-CV, RDW-SD, PLT, MPV, PDW, PCT, P-LCR, and 3 Histograms for WBC, RBC and PLT
- Throughput: Up to 60 samples per hour
- Display: 10.4" large color LCD
- Storage: 10,000 sample results including histograms, available to increase storage by expanding memory card
- Printout: Built-in thermal printer, various print-out formats; external printer optional
- Input: Mouse and keyboard, connected by USB port
- Weight: 16Kg(net), 25Kg(gross)



ZT-HM-3A

### ZT-HM-3E (3-Part Hematology Analyzer)

#### Features

- Test principle: electrical resistance for counting and SFT method for HGB
- Test flow: fully auto and the blood don't need dilute or other process
- Clot clear: high voltage burn and high pressure flush
- Parameter: 3 part differentiation of WBC, 20 parameters + 3 histograms
- Sample volume: 9.8µl peripheral blood or venous blood
- Test channel: two channels
- Throughput: 60 samples/hour
- Language: English
- Memory: save more than 30000 sample's detail results including histograms
- Display: Large colour LCD, show all parameters and histograms at same screen
- Input and output: keyboard, mouse, Parallel Port, RS232 serial port, can be connected to computer
- Printer: Inner thermal printer, can be connected to external computer and printer



ZT-HM-3E

## ZT-HM-5A (5-Part Hematology Analyzer)

### Features ◆

- ❑ Principles: Tri-angle Laser scatter, 3D Scattergram analysis, Flow Cytometry method, Cyanide free reagent for HGB test, Impedance method for RBC and PLT counting
- ❑ Parameters: 25 Reportable parameters, 1 3D Scattergram, 3 Histograms, 4 Research parameter
- ❑ Throughput: 60 samples per hour
- ❑ Test Mode: CBC mode, CBC+DIFF mode; Venous whole blood, Capillary whole blood and Prediluted
- ❑ Display: 14 inch touch screen, resolution 1366\*76
- ❑ Storage: Up to 100,000 results(including histogram, scattergram, patient information)
- ❑ Printout: Support various external USB printers, printout formats user definable
- ❑ Interface: 1 LAN port, 4 USB ports
- ❑ Weight: 36kg(net)



ZT-HM-5A

## ZT-HM-5B (5-Part Hematology Analyzer)

### Features ◆

- ❑ Principle: Tir-angle laser scattering, flow cytometry for WBC differentiation and counting Impedance for RBC and PLT counting Cyanide-free method for HGB
- ❑ Parameters: 25 parameters, 4 research parameters, 2 histograms for RBC and PLT, 4 scattergrams for WBC differential
- ❑ Throughput: 60 samples per hour
- ❑ Reagents: 3 Reagent (2 Lyse + 1 Diluent), 1 PB cleanser for maintenance
- ❑ Printout: Built-in thermal printer, support external printer
- ❑ Interface: 4 USB ports, 1 LAN port HL7 protocol, support LIS
- ❑ Display: 10.4-inch color touch screen, Liquid Crystal Display (LCD), Resolution: 800x600
- ❑ Storage: 60,000 sample results with scattergrams and histograms
- ❑ Temperature: 10C-30°



ZT-HM-5B

## ZT-CM-1A (Semi-auto Chemistry Analyzer)

### Features ◆

- ❑ Principle: Colorimetric, turbidimetry
- ❑ Method: End point, Two-point (Fixed time), Kinetic, Absorb
- ❑ Parameters: 112 parameters
- ❑ Mode: Quartz flowcell or cuvette
- ❑ Screen: 7-inch color LCD touch screen
- ❑ Incubator: 10 incubators at 37°C, 30°C or 25°C, ± 0.1°C
- ❑ Lamp: halogen lamp, 6V 10W, 2000 hours, auto sleep
- ❑ Input: 7 inch touch screen; Output: Built-in printer
- ❑ Storage: ≥ 10,000 sample results
- ❑ Print: Auto print, manual print, Thermal printer
- ❑ Net weight: 5kg



ZT-CM-1A

## ZT-CM-03 (Semi-auto Chemistry Analyzer)

### Features ◆

- ❑ 10 incubators and three timers
- ❑ 7 inch Color LCD, Touch screen
- ❑ Flow cell and Cuvette test mode compatible
- ❑ Real time curve showing
- ❑ 7 wavelength, 90 test item pre-programmed
- ❑ Memory for 10,000 sample results
- ❑ Light source hibernate function making lamp life longer
- ❑ RS232 interface, PC connecting



ZT-CM-03

## ZT-CM-A1 (Fully-auto Chemistry Analyzer)

### Features ◆

- ❑ Equipment type: Fully automatic discrete, STAT priority
- ❑ Analysis rate: Constant speed 200T/H (without ISE)
- ❑ Test principle: Colorimetry, turbidimetry
- ❑ Analysis method: End-point, 2 kinetics, fixed-time, etc.  
support single/double wavelength, linear and non-linear calibration
- ❑ Sample Tray: 42 sample positions, random access of all samples
- ❑ Reagent Tray: 25 reagent positions
- ❑ Reaction Tray: Rotating tray, 120 cuvettes
- ❑ Light source: 12V 35W halogen lamps, over 2000 hours
- ❑ Weight: 45KG



ZT-CM-A1

## ZT-UA-01 (Urine Analyzer)

### Features ◆

- ❑ 11 parameters
- ❑ 120 tests/hr
- ❑ The Color and Limpidness can be input
- ❑ Original matching urine strips for best accuracy
- ❑ LCD monitor
- ❑ Adopt luminescence source with high brightness to minimize interference of the environmental light
- ❑ Date and patient number can be input
- ❑ Single test and continuous test are available
- ❑ All the test data can be saved automatically



ZT-UA-01

## ZT-CM-P5 (Fully-auto Chemistry Analyzer)

### Features ◆

- ❑ 8.4 inch capacitive touch screen, more friendly interface
- ❑ 0.1cc whole blood, serum or plasma
- ❑ Barcoded prefabricated calibration information
- ❑ Built-in printer, results printed directly
- ❑ LIS compatible, no need to manually enter patient information
- ❑ Results could be printed through an office printer or through data management platform (MMDMP)
- ❑ From sample to complete results in 3 simple steps in approximately 13 minutes
- ❑ Microfluidics discs with pre-installed reagent pellets ensure accurate analysis of blood samples and reagents
- ❑ Stable measurement optics include a troboscopic xenon lamp, a wavelength selection system, and a multiple-wavelength detector



ZT-CM-P5

## ZT-EA-01 (Electrolyte Analyzer)

### Features ◆

- ❑ Throughput: 60 samples/hour
- ❑ Printer: Inner Thermal Printer
- ❑ Display: Large LCD
- ❑ Storage: Up to 1000 tests
- ❑ Interface: RS-232
- ❑ Working Conditions: Temperature: 15-30°C
- ❑ Humidity: 20%-80%
- ❑ Power Requirement: 220AV±10%, 50/60 Hz, 80W Electrode
- ❑ ISE electrode used for Ge300 series Electrolyte Analyzer
- ❑ Parameters: K+, Na+, Cl-, Ca++, Li+, PH, Ref, Tco2



ZT-EA-01