



# Shaping the Future, Today.

**PROUDLY INDIAN**™  
*Truly International*



FARM



OTR



INDUSTRIAL



Quality Warranty of product



Faster Claim Process



# ABOUT RUBBER KING

## A LEGACY OF EXCELLENCE

At Rubber King Tyres, we're driven by innovation and fueled by quality. With over four decades of experience, we're a leading manufacturer of high-performance automotive rubber products, trusted by customers across 90+ countries.

### Our Products

- › Pneumatic Tyres
- › Industrial Solid Tyres
- › Butyl Inner Tubes
- › Automotive Flaps
- › Curing Bladders
- › Curing Air Bags

### Our Promise

- › Customer-centric approach
- › Innovative solutions
- › Uncompromising quality
- › Global presence

## A Legacy of Excellence

Rubber King is the flagship enterprise of the Gawarvala family, built on a foundation of quality, integrity, and customer satisfaction. We're proud to serve leading automotive companies worldwide and grateful for the trust they've placed in us.

### Join Our Network

Discover how our products and expertise can drive your business forward. Connect with us Today .

**TRUSTED PARTNER FOR™  
BETTER TOMORROW**



# MANUFACTURING EXCELLENCE

Our range of products are manufactured in four high-tech manufacturing facilities located around Ahmedabad, Gujarat, India. Our manufacturing, design, and development processes are internationally accredited, and our good works have won us several awards and recognitions worldwide. Our success in industrial solid tyres has gradually led us into the manufacturing of tyres.

Strength Beyond Limits



**ONE TEAM™**  
**ONE DREAM**



# Steering Rubber King towards a Sustainable Future

## Devin Gawarevala

Devin Gawarevala, Entrepreneurial Founder and Owner, Rubber King Tyres Group, has taken the reins of the family's esteemed tyre business, propelling it towards new heights. With operations spanning 89 countries, Devin oversees manufacturing, distribution, and marketing, driving growth and innovation.





# TYRE TRANSFORMATION TRIUMPH

## A LEGACY OF EXCELLENCE

Founded in 1982 by visionary entrepreneur Dinesh Ishvarlal Gawarvala, Rubber King began with inner tubes, flaps, and curing bladders. The company's humble genesis was rooted in serving society, and its founder's unwavering commitment to this noble and lasting purpose has been a guiding force throughout.

## VISIONARY LEADERSHIP

Devin Gawarvala's vision is centered around delivering innovative products that contribute to a sustainable future. He believes in embracing change, taking calculated risks, and continuously learning from both successes and setbacks. As a dynamic leader, Devin Gawarvala always promotes trust, ethical integrity, resilience, and responsibility, inspiring his team to strive for consistent excellence through collaboration.

## CONTINUING THE LEGACY

The visionary spirit of Dinesh Ishvarlal Gawarvala continues to inspire his family and the entire Rubber King family. His son, Samir Gawarvala, has further cemented this enduring legacy by instilling a powerful and unifying mantra: "One Team, One Dream." This inclusive philosophy has become the cornerstone of the company's vibrant culture, fostering a strong sense of unity, pride, and shared purpose among its global workforce.

## RESILIENT TYRES

Rubber King's resilient solid tyres effectively meet the wide-ranging and evolving requirements of the material handling industry. This is achieved by the use of high-quality raw materials, unmatched compounding techniques, and superior tyre-building technology. The plant is equipped with best-in-class, state-of-the-art automated equipment imported from world leaders in their respective technological fields.

## A NEW ERA OF INNOVATION

Under the leadership of Devin Gawarvala, Rubber King has significantly expanded its product portfolio, launching solid tyres in 2018 and pneumatic tyres more recently. These tyres are engineered with cutting-edge technology, featuring robust nylon casings, specialized tread compounds, and distinctive sidewall lettering strategically targeting new generations of customers mainly in Farm-Agriculture, OTR, and Industrial segments, effectively covering all tube-type and tubeless tyres in both Bias and Radial technology.

## PNEUMATIC TYRES

The newly launched pneumatic tyres are engineered with a robust nylon casing, enhancing resistance to punctures and bolstering durability. A distinctive feature is the unique sidewall lettering, ensuring immediate brand recognition. Additionally, these tyres incorporate a specialized tread compound that optimizes wear and performance, aligning with Rubber King's vision of delivering products that contribute to a sustainable future.



## A CULTURE OF EXCELLENCE

At Rubber King, excellence is ingrained in the DNA. Devin Gawarvala fosters a culture of teamwork, openness, and accountability, encouraging collaboration and seamless integration of diverse global perspectives and innovative thinking. With a global workforce of over 12 nationalities and an average age of 38, spanning a dedicated 1200 strong workforce, the company truly thrives on diversity, inclusion, and multiculturalism.

## DEVIN GAWARVALA VISION

“Each tyre is the result of engineering work focused on innovation with the aim of offering the right solution to our customers.” Devin Gawarvala firmly believes that excellence is an integral part of the Rubber King DNA and is deeply present in its collaborative culture, upon which meaningful work is accomplished as a team each one energetically committing themselves to both short and long-term goals with passion and purpose.

## INTEGRATION OF PERSPECTIVES

Devin Gawarvala tirelessly strives to motivate people and consistently generates passion through collaboration amongst teams, through active listening that thoughtfully integrates participatory patterns of diverse perspectives, experiences, values, and innovative ideas across all functional and leadership levels, fostering trust, mutual respect, open communication, and a strong, inclusive sense of belonging and shared purpose for all.

## LEADERSHIP PHILOSOPHY

Devin Gawarvala believes in the philosophy of openness in functionality. The goal is to encourage and follow a spirit of acceptance, embrace change, and adapt to evolve over the nuances of limited-information work circumstances. His vision of fostering change as an opportunity for growth has been a cog in the wheel of functioning.

## COURAGE TO TAKE RISKS

As an entrepreneurial leader, Devin has great belief in making things happen, having the courage to take bold risks on both people and ideas. He believes in being accountable for the implications of one’s choices and fostering a culture of continuous learning through the tactical realities of successes as well as honest error.

## SENSE OF RESPONSIBILITY

As a Director, Devin Gawarvala sees his role in promoting trust by embodying values and ethical integrity for the whole organization, stimulating everyone’s contribution through the integration of multiple perspectives.

**MAKING WORLD™  
BETTER**



**“Each tyre is the result of engineering work focused on innovation with the aim of offering the right solution to our customers.”**



# OUR PRESENCE

Our global presence is a critical factor in our success and growth. By building a strong and diverse network of connections and operations around the world, we can unlock new opportunities, expand our reach and impact, and build a stronger, more resilient organization.





## OTR

Our Off-The-Road (OTR) tyres are designed to take on the toughest environments from construction sites to mining operations. Engineered for power, precision, and durability, they deliver unmatched performance under pressure.



## FARM

Our farm tyres are crafted to deliver exceptional performance, reliability, and safety no matter how demanding the terrain.

Every feature is designed with the modern farmer in mind.



## INDUSTRIAL

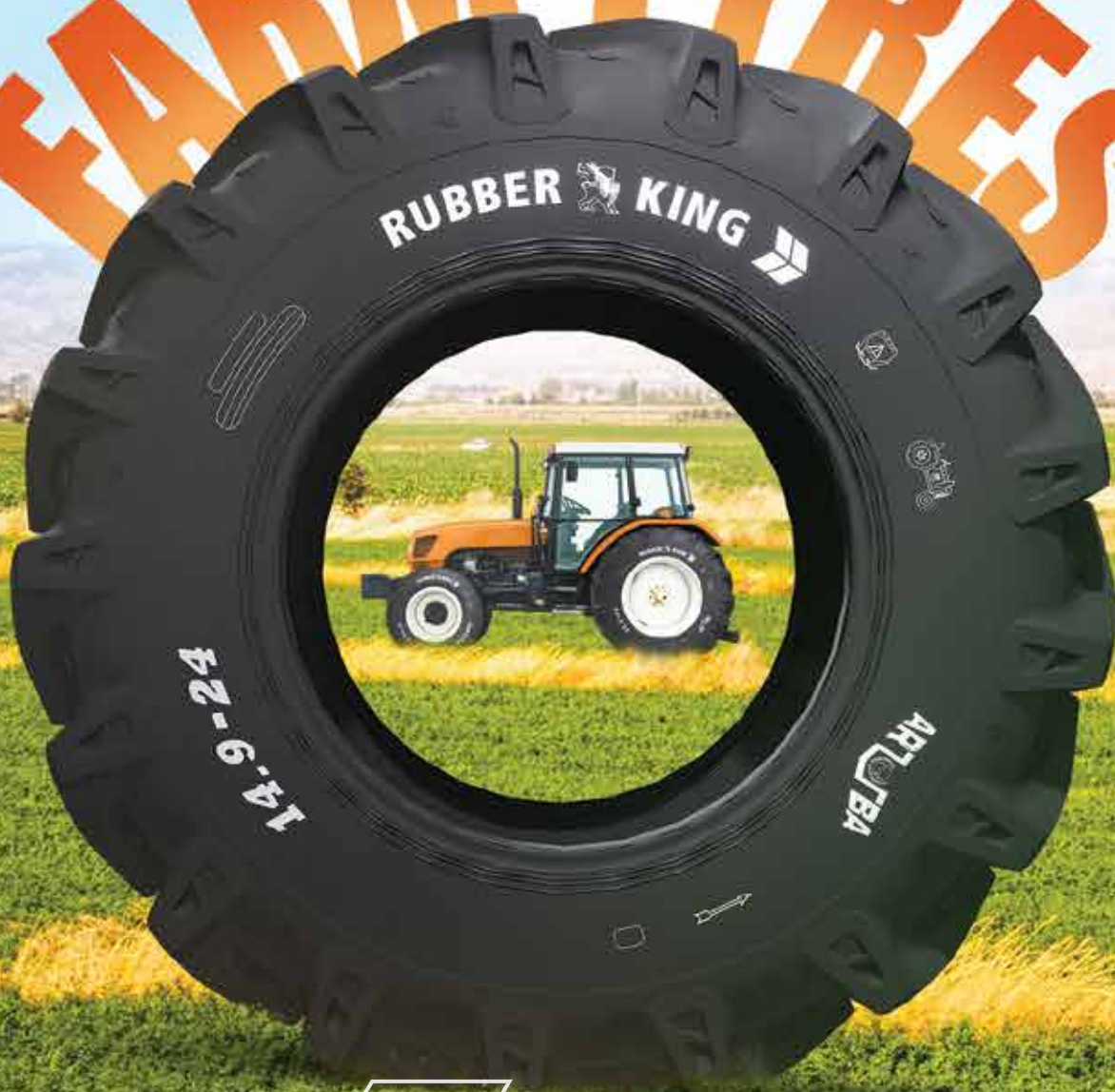
Our Industrial & Construction tyres are developed to meet the rigorous demands of material handling, construction, and heavy-duty industrial applications. Precision-built for strength, safety, and stability in every shift.





**WHAT  
MEN DRIVE™**

# FARM TYRES





Rubber King farm tyres are engineered to meet the rigorous demands of today's agricultural environments. Designed with cutting-edge technology and deep industry insight, these tyres offer superior traction, durability, and load-bearing capacity across all types of terrain from muddy fields to rocky grounds. Every tread pattern and compound is tailored for optimal performance, ensuring maximum stability, fuel efficiency, and minimal soil compaction.

Whether you're plowing, harvesting, or transporting, Rubber King tyres deliver the reliability and safety modern farmers need to keep operations running smoothly. Crafted with high-quality materials and tested in real-world conditions, Rubber King farm tyres are more than just equipment they're a smart farming solution.





# AGROVIA<sup>®</sup>

Tractor

## *BENEFITS*

- Maximum Longevity and Consistent Shape Integrity
- Attractive Appearance in Rough Terrain / Self-Cleaning & Draws Attention to the Tyre's Superior Design.





Size	Rim Alt Rim	Tyre Type	Unloaded inflated dimension		Static Loaded Radius (mm/in)	Rolling circumference (mm/in)	PR Load Index Speed Symbol	Inflation Pressure (bar psi)	Recommended load, kg/lbs	
			SW(mm/in)	OD (mm/in)					Speed, kmph/mph	
									30	19
6.00-16	4.00E	TT	165	735	340 13.4	2182 85.9	6 88A6	3.4 49	560 1235 670 1477	
			6.5	28.9			8 94A6	4.5 65		
6.50-16	4.5E	TT	175	760	354 13.9	2271 89.4	6 91A6	3.1 45	615 1356 750 1654 850 1874	
			6.9	29.9			8 98A6	4.2 61		
							10 102A6	5.3 77		
7.50-16	5.5F	TT	210	815	382 15	2473 97.4	6 98A6	2.8 41	750 1654 875 1929 1030 2271	
			8.3	32			8 103A6	3.7 54		
							10 109A6	4.8 70		
10.00-16	W8 W8L	TT	273	895	411 16.2	2667 105	8 115A6	2.8 41	1215 2679 1360 2998	
			10.7	35.2			10 119A6	3.4 49		
11.00-16	W10L W8L	TT	326	970	447 17.6	2920 114.9	8 118A6	2.5 36	1320 2910 1700 3748	
			12.8	38.2			12 126A6	3.6 52		
7.50-18	5.5F	TT	210	854	392 15.4	2670 105.1	6 101A6	2.8 41	825 1819 950 2094	
			8.3	33.6			8 106A6	3.7 54		
6.00-19	4.5E	TT	165	814	384 15.1	2457 96.7	6 93A6	3.3 48	650 1433	
			6.5	32						
7.50-20	5.5F	TT	210	903	417 16.4	4704 185.2	6 103A6	2.8 41	875 1929 1030 2271 1150 2535	
			8.3	35.5			8 109A6	3.4 49		
							10 113A6	4.8 70		

## FEATURES

Strong Nylon Casing

Consecutive Four Rib Design Benefits- Enthusiastic Driving / Increased Safety

Sturdy Shoulder Design Increased Durability & Tyre Life

Center-Based Rib Design with Better Compound Benefits - Enhanced Aesthetic & Cut Growth Resistance





# AVIATOR™

Tractor

## *BENEFITS*

- Increased stability and longer tyre mileage due to stronger construction and higher contact patch.
- Improved durability and puncture resistance for versatile performance in both on- and off-road conditions.
- Enhanced traction and longer tyre life, delivering top performance across various terrains.
- Zero wheel slip and excellent rim anchoring, ensuring superior stability and reduced air loss.
- Maximum longevity and ride comfort, offering consistent shape integrity and reduced driver fatigue.





## FEATURES

**Bigger Tyre with  
Broader Tread**

**Extra Rubber in  
Tread with optimum  
number of lugs**

**Optimum Curved &  
an angled Lugs  
with Higher NSD**

**Strong & Wide Bead  
with 15° Angle**

**Strong Casing with  
Flexible Sidewall**





Size	Rim Alt Rim	Tyre Type	Unloaded inflated dimension		Static Loaded Radius (mm/in)	Rolling circumference (mm/in)	PR Load Index Speed Symbol	Inflation Pressure (bar psi)	
			SW(mm/in)	OD(mm/in)					
340/85R24	W12	TL	355 14	1192 46.9	550 21.7	3510 138.2	125D/128A8	1.6 23	
380/70R24	W12 W12	TL	385 15.2	1194 47	548 21.6	3481 137	125D/128A8	1.6 23	
380/85R24	W12	TL	385 15.2	1260 49.6	565 22.2	3635 143.1	131D/134A8	1.6 23	
420/70R24	W13	TL	425 16.7	1250 49.2	560 22	3690 145.3	130B/130A8	1.6 23	
480/70R24	W15L W14L W16L	TL	482 19	1324 52.1	592 23.3	3889 153.1	138B/138A8	1.6 23	
420/85R28	W15L W14L	TL	443 17.4	1430 56.3	649 25.6	4176 164.4	139D/142A8	1.6 23	
340/85R28	W12	TL	355 14	1293 50.9	594 23.4	3852 151.7	127D/130A8	1.6 23	
380/85R28	W12 W11 W13	TL	385 15.2	1360 53.5	621 24.4	3966 156.1	133D/136A8	1.6 23	
420/70R28	W13 W12	TL	425 16.7	1354 53.3	618 24.3	3940 155.1	133B/133A8	1.6 23	
480/65R28	W15L W14L	TL	479 18.9	1335 52.6	611 24.1	4025 158.5	142D/145A8	2.4 35	
480/70R28	W15L	TL	482 19	1425 56.1	643 25.3	4220 166.1	140B/140A8	1.6 23	
540/65R28	W16L W18L	TL	530 20.9	1413 55.6	644 25.4	4190 165	149D/152A8	2.4 35	
540/65R30	W16L W18L	TL	530 20.9	1464 57.6	673 26.5	4431 174.4	150D/153A8	2.4 35	
420/70R30	W13 W12 W14L	TL	425 16.7	1402 55.2	638 25.1	4163 163.9	134B/134A8	1.6 23	
420/85R30	W15L W14L	TL	443 17.4	1476 58.1	677 26.7	4337 170.7	140D/143A8	1.6 23	
							145D/148A8	2.4 35	
460/85R30	W16L DW15L	TL	480 18.9	1544 60.8	685 27	4575 180.1	145D/148A8	1.6 23	
480/70R30	W15L W16L W14L	TL	482 19	1480 58.3	687 27	4475 176.2	141B/144A8	1.6 23	



Recommended load, kg/lbs

Speed, kmph/mph

Static	10	25	30	40	50	65
	6	16	19	25	31	40
<b>3800</b> 8370	<b>2480</b> 5463	<b>1960</b> 4317	<b>1900</b> 4185	<b>1800</b> 3965	<b>1730</b> 3811	<b>1650</b> 3634
<b>3800</b> 8370	<b>2480</b> 5463	<b>1960</b> 4317	<b>1900</b> 4185	<b>1800</b> 3965	<b>1730</b> 3811	<b>1650</b> 3634
<b>4490</b> 9890	<b>2930</b> 6454	<b>2310</b> 5088	<b>2240</b> 4934	<b>2120</b> 4670	<b>2050</b> 4515	<b>1950</b> 4295
<b>4370</b> 9626	<b>2850</b> 6278	<b>2250</b> 4956	<b>2190</b> 4824	<b>1900</b> 4185	<b>1900</b> 4185	
<b>5430</b> 11960	<b>3540</b> 7797	<b>2800</b> 6167	<b>2710</b> 5969	<b>2360</b> 5198	<b>2360</b> 5198	
<b>5590</b> 12313	<b>3650</b> 8040	<b>2880</b> 6344	<b>2790</b> 6145	<b>2650</b> 5837	<b>2550</b> 5617	<b>2430</b> 5352
<b>4030</b> 8877	<b>2630</b> 5793	<b>2070</b> 4559	<b>2010</b> 4427	<b>1900</b> 4185	<b>1840</b> 4053	<b>1750</b> 3855
<b>4740</b> 10441	<b>3090</b> 6806	<b>2440</b> 5374	<b>2370</b> 5220	<b>2240</b> 4934	<b>2160</b> 4758	<b>2060</b> 4537
<b>4740</b> 10441	<b>3090</b> 6806	<b>2440</b> 5374	<b>2370</b> 5220	<b>2060</b> 4537	<b>2060</b> 4537	
<b>6100</b> 13436	<b>3980</b> 8767	<b>3140</b> 6916	<b>3050</b> 6718	<b>2900</b> 6388	<b>2780</b> 6123	<b>2650</b> 5837
<b>5750</b> 12665	<b>3750</b> 8260	<b>2960</b> 6520	<b>2880</b> 6344	<b>2500</b> 5507	<b>2500</b> 5507	
<b>7480</b> 16476	<b>4880</b> 10749	<b>3850</b> 8480	<b>3740</b> 8238	<b>3550</b> 7819	<b>3410</b> 7511	<b>3250</b> 7159
<b>7710</b> 16982	<b>5030</b> 11079	<b>3970</b> 8744	<b>3850</b> 8480	<b>3650</b> 8040	<b>3520</b> 7753	<b>3350</b> 7379
<b>4880</b> 10749	<b>3180</b> 7004	<b>2510</b> 5529	<b>2440</b> 5374	<b>2120</b> 4670	<b>2120</b> 4670	
<b>5750</b> 12665	<b>3750</b> 8260	<b>2960</b> 6520	<b>2880</b> 6344	<b>2725</b> 6002	<b>2630</b> 5793	<b>2500</b> 5507
<b>6670</b> 14692	<b>4350</b> 9581	<b>3440</b> 7577	<b>3340</b> 7357	<b>3150</b> 6938	<b>3050</b> 6718	<b>2900</b> 6388
<b>6670</b> 14692	<b>4350</b> 9581	<b>3440</b> 7577	<b>3340</b> 7357	<b>3150</b> 6938	<b>3050</b> 6718	<b>2900</b> 6388
<b>5920</b> 13040	<b>3860</b> 8502	<b>3050</b> 6718	<b>2960</b> 6520	<b>2575</b> 5672	<b>2575</b> 5672	



Size	Rim Alt Rim	Tyre Type	Unloaded inflated dimension		Static Loaded Radius (mm/in)	Rolling circumference (mm/in)	PR Load Index Speed Symbol	Inflation Pressure (bar psi)	
			SW(mm/in)	OD(mm/in)					
600/70R30	DW20 DW18L	TL	614 24.2	1605 63.2	717 28.2	4809 189.3	152D/155A8	1.6 23	
							158D/161A8	2.4 35	
							165D/168A8	3.2 46	
420/85R34	W15L DW15L W14L	TL	443 17.4	1578 62.1	730 28.7	4779 188.1	147D/150A8	2.4 35	
460/85R34	DW16L W16L	TL	480 18.9	1646 64.8	753 29.6	4849 190.9	147D/150A8	1.6 23	
480/70R34	W15L	TL	482 19	1580 62.2	729 28.7	4758 187.3	143D/146A8	1.6 23	
520/70R34	W16L	TL	520 20.5	1640 64.6	746 29.4	4891 192.6	148D/151A8	1.6 23	
420/85R38	W15L W14L	TL	443 17.4	1679 66.1	773 30.4	4949 194.8	144D/147A8	1.6 23	
460/85R38	DW15L W16L DW16L	TL	480 18.9	1747 68.8	797 31.4	5194 204.5	149D/152A8	1.6 23	
520/70R38	W16L	TL	520 20.5	1750 68.9	789 31.1	5189 204.3	150D/153A8	1.6 23	
520/85R38	DW16L W15L	TL	520 20.5	1850 72.8	853 33.6	5640 222	169D/172A8	3.6 52	
580/70R38	DW18L	TL	580 22.8	1827 71.9	830 32.7	5554 218.7	155D/158A8	1.6 23	
							170D/173A8	4 58	
520/85R42	DW16L W16L	TL	520 20.5	1952 76.9	894 35.2	5819 229.1	157D/160A8	1.6 23	
							162D/165A8	2.4 35	
							167D/170A8	3.2 46	
710/70R42	DW23B DW25B	TL	720 28.3	2061 81.1	951 37.4	6202 244.2	168D/171A8	1.6 23	
							173D/176A8	2.4 35	
							176D/179A8	2.8 41	
							179D182A8	3.2 46	



Recommended load, kg/lbs						
Speed, kmph/mph						
Static	10	25	30	40	50	65
	6	16	19	25	31	40
<b>8170</b> 17996	<b>5330</b> 11740	<b>4210</b> 9273	<b>4080</b> 8987	<b>3875</b> 8535	<b>3730</b> 8216	<b>3550</b> 7819
<b>9780</b> 21542	<b>6380</b> 14053	<b>5040</b> 11101	<b>4890</b> 10771	<b>4625</b> 10187	<b>4460</b> 9824	<b>4250</b> 9361
<b>11850</b> 26101	<b>7730</b> 17026	<b>6100</b> 13436	<b>5920</b> 13040	<b>5600</b> 12335	<b>5410</b> 11916	<b>5150</b> 11344
<b>7070</b> 15573	<b>4610</b> 10154	<b>3640</b> 8018	<b>3540</b> 7797	<b>3350</b> 7379	<b>3230</b> 7115	<b>3075</b> 6773
<b>7070</b> 15573	<b>4610</b> 10154	<b>3640</b> 8018	<b>3540</b> 7797	<b>3350</b> 7379	<b>3230</b> 7115	<b>3075</b> 6773
<b>6270</b> 13811	<b>4090</b> 9009	<b>3230</b> 7115	<b>3130</b> 6894	<b>3000</b> 6608	<b>2860</b> 6300	<b>2725</b> 6002
<b>7250</b> 15969	<b>4730</b> 10419	<b>3730</b> 8216	<b>3620</b> 7974	<b>3450</b> 7599	<b>3310</b> 7291	<b>3150</b> 6938
<b>6440</b> 14185	<b>4200</b> 9251	<b>3320</b> 7313	<b>3220</b> 7093	<b>3075</b> 6773	<b>2940</b> 6476	<b>2800</b> 6167
<b>7480</b> 16476	<b>4880</b> 10749	<b>3850</b> 8480	<b>3740</b> 8238	<b>3550</b> 7819	<b>3410</b> 7511	<b>3250</b> 7159
<b>7710</b> 16982	<b>5030</b> 11079	<b>3970</b> 8744	<b>3850</b> 8480	<b>3650</b> 8040	<b>3520</b> 7753	<b>3350</b> 7379
<b>13340</b> 29383	<b>8700</b> 19163	<b>6870</b> 15132	<b>6670</b> 14692	<b>6300</b> 13877	<b>6090</b> 13414	<b>5800</b> 12775
<b>8910</b> 19626	<b>5810</b> 12797	<b>4590</b> 10110	<b>4460</b> 9824	<b>4250</b> 9361	<b>4070</b> 8965	<b>3875</b> 8535
<b>13800</b> 30396	<b>9000</b> 19824	<b>7110</b> 15661	<b>6900</b> 15198	<b>6500</b> 14317	<b>6300</b> 13877	<b>6000</b> 13216
<b>9490</b> 20903	<b>6190</b> 13634	<b>4890</b> 10771	<b>4740</b> 10441	<b>4500</b> 9912	<b>4330</b> 9537	<b>4125</b> 9086
<b>10930</b> 24075	<b>7130</b> 15705	<b>5630</b> 12401	<b>5460</b> 12026	<b>5150</b> 11344	<b>4990</b> 10991	<b>4750</b> 10463
<b>12540</b> 27621	<b>8180</b> 18018	<b>6460</b> 14229	<b>6270</b> 13811	<b>6000</b> 13216	<b>5720</b> 12599	<b>5450</b> 12004
<b>12880</b> 28370	<b>8400</b> 18502	<b>6640</b> 14626	<b>6440</b> 14185	<b>6150</b> 13546	<b>5880</b> 12952	<b>5600</b> 12335
<b>14950</b> 32930	<b>9750</b> 21476	<b>7700</b> 16960	<b>7480</b> 16476	<b>7100</b> 15639	<b>6830</b> 15044	<b>6500</b> 14317
<b>16330</b> 35969	<b>10650</b> 23458	<b>8410</b> 18524	<b>8170</b> 17996	<b>7750</b> 17070	<b>7460</b> 16432	<b>7100</b> 15639
<b>17830</b> 39273	<b>11630</b> 25617	<b>9180</b> 20220	<b>8910</b> 19626	<b>8500</b> 18722	<b>8140</b> 17930	<b>7750</b> 17070



# ARTUBA<sup>®</sup>

Tractor

## BENEFITS

- Increased Stability & Tyre Mileage.
- Increased Durability / Puncture Protection & Fit for Multiple Operations.
- Best Performance on "On & Off-Road" Application / Longer Total Tyre Life.
- Better Traction / Self-Cleaning.
- Maximum Longevity and Consistent Shape Integrity.
- Zero Wheel Slip / Excellent Stability with] Better Durability.
- Less Driver Exhaustion & Longer Tyre Life.





## FEATURES

**Bigger Tyre with  
Broader Tread**

**Optimum Curved  
& Pyramid Lugs**

**Extra Rubber at  
center with  
Optimum (20) Lugs**

**Attractive Mud Cracker**

**Strong Nylon Casing**

**Strong & Wide Bead**





**TRA Code R-4**

Size	Rim Alt Rim	Tyre Type	Unloaded inflated dimension		Static Loaded Radius (mm/in)	Rolling circumference (mm/in)	PR Load Index Speed Symbol	Inflation Pressure (bar psi)	Recommended load, kg/lbs	
			SW(mm/in)	OD (mm/in)					Speed, kmph/mph	
									30	19
9.5-24	W8 W7 W8H	TT	241	1050	491 19.3	3150 124.0	8 112A6	2.8 41	1120 2469	
			9.5	41.3			10 116A6	3.5 51	1250 2756	
11.2-24	W10	TT	284	1105	512 20.1	3370 132.6	8 116A6	2.4 35	1250 2756	
			11.1	43.5			10 120A6	3.0 44	1400 3086	
12.4-24	W11	TT	315	1160	543 21.3	3480 137.0	6 115A6	1.7 25	1215 2679	
			12.4	45.6			8 121A6	2.3 33	1450 3197	
							12 128A6	3.5 51	1800 3968	
14.9-24	W13 W11 W12	TT	378	1265	574 22.6	3545 139.5	8 128A6	1.8 26	1800 3968	
			14.8	49.8			12 135A6	2.6 38	2180 4806	
13.6-28	W12 W11	TT	345	1310	613 24.1	3930 154.7	8 125A6	2.0 29	1650 3638	
			13.5	51.5			10 127A6	2.2 32	1750 3858	
							12 128A6	2.3 33	1800 3968	
14.9-28	W13 W11 W12	TT	378	1365	639 25.1	4095 161.2	8 130A6	1.8 26	1900 4189	
			14.8	53.7			10 132A6	2.1 30	2000 4409	
18.4-26	W16L W15L	TT	467	1450	647 25.5	4370 172	10 142A6	1.9 28	2650 5842	
			18.4	57			12 146A6	2.3 33	3000 6614	
16.9-30	W15L W14L	TT	429 16.8	1485 58.4	695 27.3	4455 175.3	8 137A6	1.7 25	2300 5071	
							10 140A6	2.0 29	2500 5512	
							12 144A6	2.4 35	2800 6173	
							16 149A6	3.2 46	3250 7165	
18.4-30	W15L W14L	TT	467 18.3	1550 61.0	725 28.5	4650 183.0	10 145A6	1.8 26	2900 6393	
							12 149A6	2.3 33	3250 7165	
							16 154A6	2.9 42	3750 8267	



# PROWLER<sup>®</sup>

Tractor

## *BENEFITS*

- Optimum Traction and soil penetration
- Strong Carcass to carry higher load & safeguard from external damage
- Multi Angled lug provides traction, free rolling & smooth riding





TRA Code R1

Size	Rim Alt Rim	Tyre Type	Unloaded inflated dimension		Static Loaded Radius (mm/in)	Rolling circumference (mm/in)	PR Load Index Speed Symbol	Inflation Pressure (bar psi)	Recommended load, kg/lbs	
			SW(mm/in)	OD(mm/in)					Speed, kmph/mph	
									20	20
8.3-32	W7 W6	TT	<b>211</b>	<b>1195</b>	<b>565</b>	<b>3574</b>	<b>6</b> 105A6	<b>2.4</b> 35	<b>925</b> 2039	
			8.3	47	22.2	141	<b>8</b> 111A6	<b>3.2</b> 47	<b>1090</b> 2403	
9.5-32	W8 W7	TT	<b>240</b> 9.4	<b>1250</b> 49.2	<b>585</b> 23.0	<b>3740</b> 147.2	<b>6</b> 106A6	<b>2.1</b> 31	<b>950</b> 2094	
16.9-34	W15L	TT	<b>429</b>	<b>1587</b>	<b>731</b>	<b>4747</b>	<b>8</b> 134A8	<b>1.7</b> 25		<b>2120</b> 4674
			16.9	62.5	28.8	186.9	<b>10</b> 138A8	<b>1.9</b> 28		<b>2360</b> 5203
18.4-34	W16L W15L	TT	<b>467</b>	<b>1655</b>	<b>758</b>	<b>4950</b>	<b>8</b> 137A8	<b>1.4</b> 20		<b>2300</b> 5071
			18.4	65.2	29.8	194.9	<b>12</b> 146A8	<b>2.2</b> 32		<b>3000</b> 6614
12.4-36	W11L W10	TT	<b>315</b> 12.4	<b>1465</b> 57.7	<b>684</b> 26.9	<b>4380</b> 172.4	<b>6</b> 117A8	<b>1.7</b> 25		<b>1285</b> 2833
							<b>8</b> 123A8	<b>2.3</b> 33		<b>1550</b> 3417
							<b>10</b> 127A8	<b>2.9</b> 42		<b>1750</b> 3858
							<b>14</b> 135A8	<b>4.1</b> 60		<b>2180</b> 4806



Size	Rim Alt Rim	Tyre Type	Unloaded inflated dimension		Static Loaded Radius (mm/in)	Rolling circumference (mm/in)	PR Load Index Speed Symbol	Inflation Pressure (bar psi)	Recommended load, kg/lbs	
			SW(mm/in)	OD(mm/in)					Speed, kmph/mph	
									20 12	20 12
13.6-36	W12 W11	TT	345 13.6	1514 59.6	705 27.8	4530 178.3	6 125A6	1.6 23	1650 3638	
							8 129A6	2.0 29	1850 4079	
							10 134A6	2.5 36	2120 4674	
13.6-38	W12 W11	TT	345 13.6	1565 61.6	730 28.7	4680 184.3	6 126A6	1.6 23	1700 3748	
							8 131A6	2.0 29	1950 4299	
							10 136A6	2.5 36	2240 4938	
15.5-38	W14L	TT	395 15.5	1570 61.8	732 28.8	4712 185.5	6 124A8	1.4 20		1600 3527
							8 129A8	1.8 26		1850 4079
							10 134A8	2.3 33		2120 4674
16.9-38	W15L W14L	TT	430 16.9	1690 66.5	782 30.8	5052 198.9	8 141A6	1.7 25	2575 5677	
							10 143A6	2.0 29	2725 6007	
15.5-38	W16L W15L	TT	467 18.4	1755 69.1	810 31.9	5250 206.7	8 139A8	1.4 20		2430 5357
							12 149A8	2.2 32		3250 7165
							14 151A8	2.5 36		3450 7606



## FEATURES

**High traction with deep penetration and lower wear rate**



**Stronger tyre with high contact patch**



**Nylon casing  
Provides better dimensional stability**

**Maintains best casing integrity**





# TILLMAN™

Row crop tractor

## *BENEFITS*

- Directional lug Pattern Specially designed for traction and round shoulders provide protection to crops
- Reinforced Casing & belts for High load carrying capacity
- Less soil compaction





Size	Rim Alt Rim	Tyre Type	Unloaded inflated dimension		Static Loaded Radius (mm/in)	Rolling circumference (mm/in)	PR Load Index Speed Symbol	Inflation Pressure (bar psi)	Recommended load, kg/lbs					
			Speed, kmph/mph											
			Constant Load											
SW (mm/in)	OD (mm/in)	Static	10 6	25 16	30 19	40 25	50 31							
230/95R32	W7	TL	228 9	1251 49.3	582 22.9	3821 150.4	128B/128A8	4.0 58	4140 9127	2700 5952	1998 4405	1926 4246	1800 3968	1800 3968
270/95R32	W9 W10 W8	TL	275 10.8	1327 52.2	619 24.4	3969 156.3	136B/136A8	4.0 58	5150 11354	3360 7408	2485 5478	2395 5280	2240 4938	2240 4938

## FEATURES

Slim, Narrow Tread Design

Higher Tread Depth

Improved Manoeuvrability



Lightweight Construction

Optimized for Smaller Equipment



# MIZZLE™

Tractor

## *BENEFITS*

- Lower Angle Lugs provide excellent traction for irrigation purposes
- Robust carcass construction with strong sidewall provides protection against damages





TRA Code **R1**

Size	Rim Alt Rim	Tyre Type	Unloaded inflated dimension		Static Loaded Radius (mm/in)	Rolling circumference (mm/in)	PR Load Index Speed Symbol	Inflation Pressure (bar psi)	Recommended load, kg/lbs	
			SW(mm/in)	OD(mm/in)					Speed, kmph/mph	
									30 19	40 25
11.2-24	W10 W9	TL	284 11.2	1105 43.5	503 19.8	3260 128.34	6 110A8 8 116A8	1.8 26 2.4 35		1060 2237
										1250 2756
14.9-24	W13 W12	TL	378 14.9	1250 49.2	562 22.1	3668 144.4	6 123A6 8 128A6	1.4 20 1.8 26		1550 3417
										1800 3968
11.2-38	W10	TL	284 11.2	1459 57.4	678 26.7	4390 172.8	6 114A8 8 119A8	1.8 26 2.4 35		1180 2601
										1360 2998

## FEATURES

Bigger Tyre with Broader Tread

Extra Rubber at center with Optimum (20) Lugs

Strong Nylon Casing

Optimum Curved & Pyramid Lugs

Attractive Mud Cracker

Strong & Wide Bead





Agricultural trolley

## *BENEFITS*

- Special Rib Design minimises soil compaction
- Strong Nylon construction provides high Load Carrying Capacity



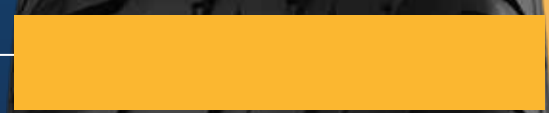


Size	Rim Alt Rim	Tyre Type	Unloaded inflated dimension		Static Loaded Radius (mm/in)	Rolling circumference (mm/in)	PR Load Index Speed Symbol	Inflation Pressure (bar psi)	Recommended load, kg/lbs	
			SW(mm/in)	OD(mm/in)					Speed, kmph/mph	
									40	25
10.0/75-15.3	9.00	TL	274 10.4	760 29.9	350 13.7	2316 91.1	10PR 123A8/111A8	3.9 57	1550 3417	
							12PR 126A8/114A8	4.7 68	1700 3748	
							14PR 130A8/118A8	5.5 80	1900 4189	
							18PR 135A8/122A8	7.1 103	2180 4806	
11.5/80-15.3	9.00	TL	297 11.7	844 33.2	370 14.6	2475 97.4	10PR 131A8/119A8	3.4 49	1950 4299	
							12PR 136A8/123A8	4.1 59	2240 4938	
							14PR 139A8/126A8	4.75 69	2430 5357	
							16PR 141A8/128A8	5.4 78	2575 5677	
							18PR 143A8/131A8	6.1 88	2725 6007	
12.5/80-15.3	9.00	TL	312 12.3	885 34.8	387 15.2	2593 102	14PR 142A8/129A8	4.25 62	2650 5842	
							18PR 151A8/139A8	7.0 102	3450 7606	
10.5/65-16	W9 W8, W8L	TL	270 10.6	760 29.9	350 13.8	2329 91.7	10PR 123A8/111A8	3.8 55	1550 3417	
							14PR 130A8/118A8	5.3 77	1900 4189	
15/55-17	13.00 13, W13	TL	380 14.9	850 33.5	390 15.3	2575 101.4	10PR 134A8/122A8	2.6 38	2120 4674	
							14PR 141A8/128A8	3.6 52	2575 5677	
10.5/80-18	W8, 9, W9	TL	274 11.0	885 35.0	416 16.4	2780 109.4	10PR 131A8	3.7 53.7	1950 4299	
							14PR 138A8	5.2 75.4	2360 5203	
11L-15SL	8LB,10LB	TL	279 11.0	813 32.0	382 15.0	2555 100.6	8PR 106A8	3.7 53.7	950 2094	
							10PR 110A8	5.2 75.4	1060 2337	



## FEATURES

Wider Tread & Higher Footprint



Sturdy Shoulder Design



High Denier Nylon Casing



Semi-Lug Design with Rounded Shoulders



Special Tread Compound





Agricultural trolley

## *BENEFITS*

- Direction tread pattern for excellent traction and self cleaning
- special rubber compound gives better wear resistance
- Superior Tyre Casing & bead gives longer life





Size	Rim Alt Rim	Tyre Type	Unloaded inflated dimension		Static Loaded Radius (mm/in)	Rolling circumference (mm/in)	PR Load Index Speed Symbol	Inflation Pressure (bar psi)	Recommended load, kg/lbs
			SW(mm/in)	OD(mm/in)					Speed, kmph/mph
12.5/80-18	W9	TL	308 12.1	987 38.8	435 17.1	2915 114.1	142A8/129A8 148A8/135A8 150A8/138A8	3.7 54 4.9 71 5.5 78	40 25
									2650 5842
									3150 6945
									3350 7385

## FEATURES

Bigger tyre with optimum curved pyramid lugs

Attractive mud shaker for self Cleaning

Strong Nylon casing with for better dimensional stability and excellent Traction & Flexing

Strong and Flexible side wall for better casing integrity





# agro trail i1™



Agricultural trailer

## *BENEFITS*

- Strong Nylon Construction & High Grade compound gives longer life
- Specially Designed Ribs give better rolling resistance





Size	Rim Alt Rim	Tyre Type	Unloaded inflated dimension		Static Loaded Radius (mm/in)	Rolling circumference (mm/in)	PR Load Index Speed Symbol	Inflation Pressure (bar psi)	Recommended load, kg/lbs	
			SW (mm/in)	OD (mm/in)					Speed, kmph/mph	
									50	31
9.5L-15SL	7.00 8LB	TT/TL	241 9.4	765 30.1	365 14.3	2330 91.7	6PR	2.2	925	
							105B	32	2039	
							8PR	3.0	1120	
11L-15SL	8.00 8LB, 10LB	TT/TL	279 10.9	777 30.5	369 14.5	2365 93.1	112B	44	2469	
							12PR	4.0	1450	
							121B	64	3196	
12.5L-15SL	10.00 10LB	TT/TL	318 12.5	822 32.3	389 15.3	2497 98.3	8PR	2.5	1150	
							113B	36	2535	
							10PR	3.0	1320	
12.5L-15SL	10.00 10LB	TT/TL	318 12.5	822 32.3	389 15.3	2497 98.3	118B	44	2910	
							12PR	3.6	1450	
							121B	52	3196	
12.5L-15SL	10.00 10LB	TT/TL	318 12.5	822 32.3	389 15.3	2497 98.3	8PR	2.5	1360	
							119B	36	2998	
							10PR	3.0	1550	
12.5L-15SL	10.00 10LB	TT/TL	318 12.5	822 32.3	389 15.3	2497 98.3	123B	44	3417	
							12PR	3.6	1750	
							127B	52	3858	



## FEATURES

**Multi Rib Design**

**Sturdy Shoulder Design**

**Strong Nylon Casing**

**Unique Lettering on Sidewall**





# **FLOATSTAR**<sup>TM</sup>

Agricultural trailer

## *BENEFITS*

- Wide & Flat Tread Pattern giving excellent flotation properties
- Enhanced Carcass ensures high load carrying capacity
- Lugs designed to give excellent self cleaning





Size	Rim Alt Rim	Tyre Type	Unloaded inflated dimension		Static Loaded Radius (mm/in)	Rolling circumference (mm/in)	PR Load Index Speed Symbol	Inflation Pressure (bar psi)	Recommended load, kg/lbs Speed, kmph/mph			
			SW(mm/in)	OD(mm/in)					Free Rolling		Drive Wheel	
									20 12	20 12	20 12	20 12
500/50-22.5	AG16.00	TL	500 19.7	1070 42.1	534 21	3215 126.6	16PR 158A8/155B 146A8/142B	3.0 44	4250 9370	3875 8543	3000 6614	2650 5842
							20PR 163A8/159B 151A8/147B	3.8 55	4875 10748	4375 9645	3450 7606	3075 6779
400/55-22.5	AG13.00	TL	405 15.9	1020 40.1	465 18.3	3063 120.6	14PR 150A8/146B 138A8/134B	3.0 44	3350 7385	3000 6614	2360 5203	2120 4674
							16PR 152A8/149B 140A8/136B	4.0 58	3550 7826	3250 7165	2500 5512	2240 4938
500/45-22.5	AG16.00	TL	513 20.2	1022 40.2	472 18.6	3057 120.3	14PR 150A8/146B 138A8/134B	3.0 44	3350 7385	3000 6614	2360 5203	2120 4674
							16PR 154A8/150B 142A8/138B	3.6 52	3750 8267	3350 7385	2650 5842	2360 5203
550/45-22.5	AG16.00	TL	558 21.9	1070 42.1	562 22.1	3201 126	16PR 159A8/156B 147A8/144B	2.8 41	4375 9645	4000 8818	3075 6779	2800 6173
							20PR 166A8/162B 154A8/150B	4.2 61	5300 11685	4750 10472	3750 8267	3350 7385
500/60-22.5	AG16.00	TL	503 19.8	1172 46.1	492 19.4	3506 138	16PR 163A8/159B 151A8/148B	3.2 46	4875 10748	4375 9645	3450 7606	3150 6945
							20PR 170A8/167B 158A8/155Bt	5.0 72	6000 13228	5450 12015	4250 9370	3875 8543
600/50-22.5	AG20.00	TL	610 24	1172 46.1	535 20.1	3516 138.4	12PR 159A8/156B 147A8/144B	2.0 29	4375 9645	4000 8818	3075 6779	2800 6173
							16PR 165A8/161B 153A8/149B	2.8 41	5150 11354	4625 10196	3650 8047	3250 7165
							20PR 169A8/165B 156A8/152B	3.2 46	5800 12787	5150 11354	4000 8818	3550 7826

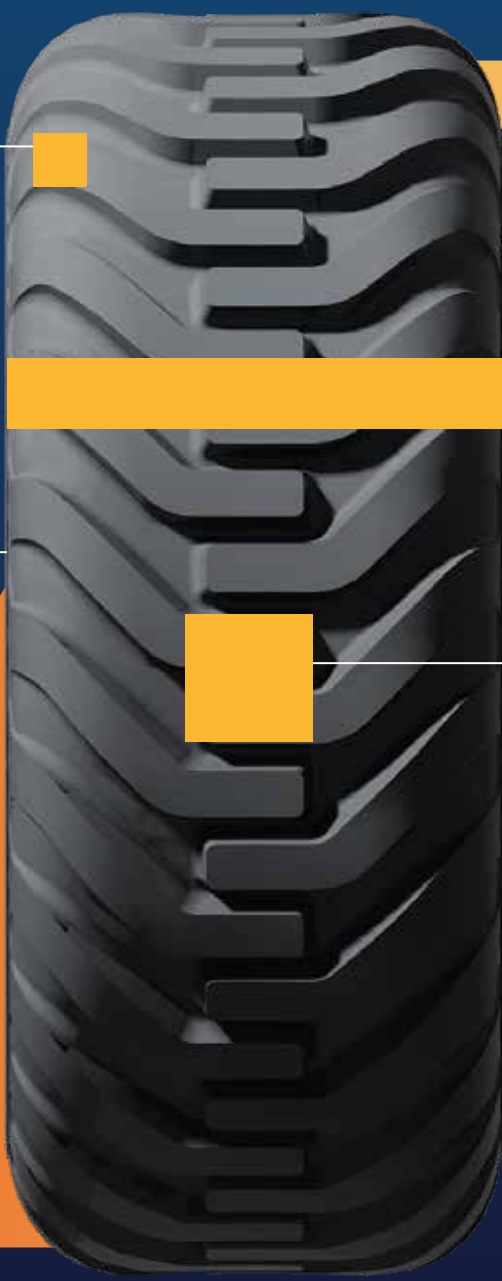


Size	Rim Alt Rim	Tyre Type	Unloaded inflated dimension		Static Loaded Radius (mm/in)	Rolling circumference (mm/in)	PR Load Index Speed Symbol	Inflation Pressure (bar psi)	Recommended load, kg/lbs Speed, kmph/mph			
			SW(mm/in)	OD(mm/in)					Free Rolling		Drive Wheel	
									20 12	20 12	20 12	20 12
700/40-22.5	AG24.00	TL	725 28.5	1140 44.9	520 20.5	3410 134.3	12PR 160A8/157B 148A8/144B	1.7 25	4500 9921	4125 9094	3150 6945	2800 6173
							16PR 166A8/162B 154A8/150B	2.6 38	5300 11685	4750 10472	3750 8267	3350 7385
550/60-22.5	AG16.00	TL	552 21.7	1240 48.8	561 22.1	3705 145.8	16PR 167A8/163B 154A8/150B	2.8 41	5450 12015	4875 10748	3750 8267	3350 7385
							20PR 171A8/167B 158A8/154B	3.5 51	6150 13558	5450 12015	4250 9370	3750 8267
600/55-22.5	AG20.00	TL	610 24	1232 48.5	558 21.9	3798 149.5	12PR 164A8/160B 151A8/148B	2.0 29	5000 11023	4500 9921	3450 7606	3150 6945
							16PR 169A8/166B 156A8/153B	2.6 38	5800 12787	5300 11685	4000 8818	3650 8047
							20PR 173A8/169B 160A8/156B	3.2 46	6500 14330	5800 12787	4500 9921	4000 8818
700/50-22.5	AG24.00	TL	725 28.5	1270 50	574 22.6	3798 149.5	12PR 168A8/164B 156A8/153B	1.8 26	5600 12346	5000 11023	4000 8818	3650 8047
							16PR 174A8/170B 162A8/158B	2.4 38	6700 14771	6000 13228	4750 10472	4250 9370
400/60-22.5	AG11.75	TL	399 15.7	1075 42.3	475 18.7	3234 127.3	16PR 156A8/152B 144A8/140B	3.5 51	4000 8818	3550 7826	2800 6173	2500 5512
							18PR 160A8/156B 148A8/144B	4.3 62	4500 9921	4000 8818	3150 6945	2800 6173
400/60-15.5	AG13.00	TL	405 15.9	875 34.4	395 15.5	2625 103.3	16PR 148A8 136A8	4.0 58	3150 6945		2240 4938	
							18PR 151A8 139A8	4.8 70	3450 7606		2430 5357	



## FEATURES

Large tyre with rounded shoulder



Wide footprint design

Low rolling resistance

Optimized tread and structure for flotation



# INDUSTRIAL TYRES







# SIMBA™

Skid steer

## *BENEFITS*

- Superior traction and better safety in harsh conditions due to excellent vehicle stability.
- Leads to a smooth ride and better tyre performance thanks to improved traction and higher footprint.
- Increased durability and tyre life as it offers carcass protection and excellent cooling.
- Greater safety and puncture resistance, resulting in longer tyre life by protecting rim and sidewall from accidental damage.
- Enhanced mileage, grip, and flexibility due to better cross-linking density, cooler running, and lower rolling resistance.





Size	Rim Alt Rim	Tyre Type	Unloaded inflated dimension		Static Loaded Radius (mm/in)	Rolling circumference (mm/in)	PR Load Index Speed Symbol	Inflation Pressure (bar psi)	Recommended load, kg/lbs	
			SW(mm/in)	OD(mm/in)					Speed, kmph/mph	
									10	6
10-16.5NHS	8.25	TL	264 10.4	773 30.4	350 13.8	2316 91.2	8 130A2	4.1 60	1900	
									4189	
									2120	
12-16.5NHS	9.75	TL	307 12.1	831 32.7	380 14.9	2510 98.8	10 141A2	4.5 65	2575	
									5677	
									2900	
14-17.5NHS	10.5	TL	349 13.7	921 36.3	421 16.6	2746 108.1	12 151A2	5.5 80	3075	
									6393	
									3075	
14-17.5NHS	10.5	TL	349 13.7	921 36.3	421 16.6	2746 108.1	14 155A2	5.5 80	3075	
									6779	
									3450	
14-17.5NHS	10.5	TL	349 13.7	921 36.3	421 16.6	2746 108.1	14 155A2	5.5 80	3450	
									7606	
									3875	
14-17.5NHS	10.5	TL	349 13.7	921 36.3	421 16.6	2746 108.1	14 155A2	5.5 80	3875	
									8543	
									3875	

## FEATURES

Wide & Robust Tyre

Flat Tread with Extra Deep Lugs

Sturdy Rim Guard at Lower Sidewall

Sturdy & Deep Window at Shoulder

New Age Natural Filler (Silica Base Compound)





# Jwala

Pneumatic tyre roller

## ***BENEFITS***

- Ensures free rolling and quieter operation by reducing friction and resistance, leading to a more comfortable and noise-free ride.
- Provides excellent wear resistance, maintaining optimal tyre performance and durability over a longer period.
- Enhances durability and dimensional stability, ensuring maximum longevity and consistent tire shape even under tough conditions.
- Improves visibility and aesthetic appeal, making the tire easily noticeable in rough terrain and facilitating self-cleaning.





Size	Rim Alt Rim	Tyre Type	Unloaded inflated dimension		Static Loaded Radius (mm/in)	Rolling circumference (mm/in)	PR Load Index Speed Symbol	Inflation Pressure (bar psi)	Recommended load, kg/lbs	
			SW(mm/in)	OD(mm/in)					Speed, kmph/mph	
									10	6
9.00-20	7.0 7.5	TT	275	1016	471	3105	14 159A2	7.3 106	4375 9645	
			10.8	40	18.5	122.2	16PR 162A2	8.3 120	4750 10472	
11.00-20	8.0 8.5	TT	290	1070	494	3310	16 167A2	7.3 106	5450 12015	
			11.4	42.1	19.4	130.3	18 169A2	8.3 120	5800 12787	

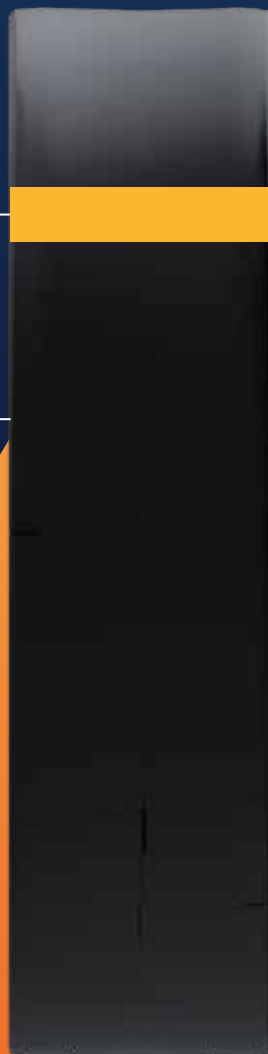
## FEATURES

Smooth Tire for Soil and Surface Compacting

Custom Made High-Resilience (HR) Compound

Strong Nylon Casing

Unique Lettering on Side Wall





# VE-S-PER™

Pick & carry crane

## *BENEFITS*

- Ensures consistent and dependable performance in extreme working conditions due to high load-carrying capacity.
- Provides increased vehicle stability and longer tyre life through a stronger structure and higher contact patch.
- Enhances durability and puncture protection by offering high protection to the casing.
- Delivers excellent wear resistance and sustained performance over time thanks to its high-resilience engineering.





Size	Rim Alt Rim	Tyre Type	Unloaded inflated dimension		Static Loaded Radius (mm/in)	Rolling circumference (mm/in)	PR Load Index Speed Symbol	Inflation Pressure (bar psi)	Recommended load, kg/lbs	
			SW(mm/in)	OD(mm/in)					Speed, kmph/mph	
									50	31
14.00-25	10.00/1.5	TT/TL	375 14.8	1368 53.8	620 24.4	4095 161.2	24 165B	5.75 83	5150 11354	

## FEATURES

Unique Non-Directional Tread Pattern

Bigger Tyre with Broader Step Lugs



Extra Rubber in Tread Region

Custom-made cut & chip / heat-resistant compound



# COBRA KING<sup>®</sup>

Pick & carry crane

## *BENEFITS*

- Delivers excellent traction and long-lasting durability, ensuring superior safety and maximum mileage over time.
- Enhances grip and directional stability, reducing the risk of side slip even at high speeds.
- Maintains tread strength under heavy loads, resulting in improved durability and better retread ability.
- Offers strong protection against sidewall damage, ensuring better casing integrity for both on- and off-road conditions.
- Ensures consistent shape and size over time, delivering maximum longevity and dimensional stability





Size	Rim Alt Rim	Tyre Type	Unloaded inflated dimension		Static Loaded Radius (mm/in)	Rolling circumference (mm/in)	PR Load Index Speed Symbol	Inflation Pressure (bar psi)	Recommended load, kg/lbs	
			SW(mm/in)	OD(mm/in)					Speed, kmph/mph	
									100	62
11.00-20	8.50V	TL	305	1105	515	3355	16	7.95	3250	
			12.0	43.5	20.3	132.0	149J	115	7165	
							18	8.25	3350	
						150J	120	7385		

## FEATURES

**Aggressive & Wide Tread with Deep Grooves**

**Directional & Straight Multiple Rib Design**

**Wide Sidewall with Thick Kerb Rib**

**Sinusoidal Buttress Design**

**Strong Nylon Casing**





# SARVATRA<sup>®</sup>

Backhoe loader

## *BENEFITS*

- Enhanced Stability with High contact patch ensures better grip and longer tyre life.
- Superior traction, self-cleaning ability, and safety on wet or slippery surfaces.
- Built for resistance against cuts, chips, and heat; offers long-lasting performance and shape retention.
- Eye-catching design that stands out in rugged terrain while aiding in easy identification and self-cleaning.





Size	Rim Alt Rim	Tyre Type	Unloaded inflated dimension		Static Loaded Radius (mm/in)	Rolling circumference (mm/in)	PR Load Index Speed Symbol	Inflation Pressure (bar psi)	Recommended load, kg/lbs			
			SW(mm/in)	OD(mm/in)					Speed, kmph/mph			
									40	25		
16.9-28	DW15L	TT	429 16.9	1410 55.5	645 25.4	4105 161.6			3150	6945		
									10 148A8	2.2 32	3550	7826
									12 152A8	2.6 38	3875	8543
									14 155A8	3.0 44	4125	9094
									16 157A8	3.4 49		

## FEATURES

Bigger tyre with Broader lug

Deep Tread with Overlap Design



Durable Compound & Strong Nylon Casing

Bold Sidewall Lettering



Backhoe loader

## *BENEFITS*

- Excellent steerability and longer tyre life in toughest applications
- Increased durability and puncture protection
- Excellent wear resistance and maintains optimal performance over time
- Maximum longevity and consistent shape integrity
- Better looks in rough terrain, self-cleaning, and attention-grabbing design





Size	Rim Alt Rim	Tyre Type	Unloaded inflated dimension		Static Loaded Radius (mm/in)	Rolling circumference (mm/in)	PR Load Index Speed Symbol	Inflation Pressure (bar psi)	Recommended load, kg/lbs	
			SW(mm/in)	OD(mm/in)					Speed, kmph/mph	
									30	19
9.00-16	6.50H 6.00G	TT	253	912	427	2780	16	8.5	3250	
			9.9	35.9	16.8	109.4	149A8	123	7165	
							18	9.4	3450	
						151A8	136	7606		

## FEATURES

Bigger tyre with broader "U" lugs in step design

Extra rubber in tread region

Custom-made cut & chip / heat-resistant compound

Strong nylon casing

Unique lettering on sidewall





Backhoe loader

## ***BENEFITS***

- Excellent steerability and longer tyre life in toughest applications
- Increased durability and puncture protection
- Excellent wear resistance and maintains optimal performance over time
- Maximum longevity and consistent shape integrity
- Better looks in rough terrain, self-cleaning, and attention-grabbing design





Size	Rim Alt Rim	Tyre Type	Unloaded inflated dimension		Static Loaded Radius (mm/in)	Rolling circumference (mm/in)	PR Load Index Speed Symbol	Inflation Pressure (bar psi)	Recommended load, kg/lbs	
			SW(mm/in)	OD(mm/in)					Speed, kmph/mph	
									30	19
12.5/80-18	6.50H 6.00G	TT	253	912	427	2780	16	7.25	2300	
			9.9	35.9	16.8	109.4	137A6	105	5071	
						18	7.6	2360		
						138A6	110	5203		

## FEATURES

Deep directional tread for enhanced traction on hard, abrasive, and loose surfaces

Cut & chip resistant compound for longer tyre life

Heavy-duty casing for high load-carrying capacity

Large central & shoulder blocks for superior stability

Optimally spaced lugs for better self-cleaning





# PYROSTAR™

Compactor

## *BENEFITS*

- Increased vehicle stability and longer tyre life due to excellent traction.
- Superior wear and cut growth resistance for enhanced durability.
- Better durability and tyre performance with increased resistance to snagging and tear.
- Protection from sidewall damage, improving driver comfort and extending tyre lifespan.
- Maximum longevity and consistent shape integrity thanks to better dimensional stability.





Size	Rim Alt Rim	Tyre Type	Unloaded inflated dimension		Static Loaded Radius (mm/in)	Rolling circumference (mm/in)	PR Load Index Speed Symbol	Inflation Pressure (bar psi)	Recommended load, kg/lbs	
			SW(mm/in)	OD(mm/in)					Speed, kmph/mph	
									30	19
23.1-26	DW20B	TL	590	1560	688	4688	12	1.7	3650	
			23.2	61.4	27.1	184.5	153A6	25	8047	
							16	2.3	4375	
						159A6	33	9645		

## FEATURES

Diamond Cut Block Type Tread Pattern

Toughest Tread Compound with Best Compounding

Custom-made cut & chip / heat-resistant compound



Rugged Sidewall Compound

Strong Nylon Casing



# SCORPION KING<sup>®</sup>

Motor grader

## *BENEFITS*

- Excellent vehicle stability, superior traction, and enhanced safety even in harsh conditions.
- Exceptional wear and cut resistance, ensuring longer tyre life in demanding environments.
- Increased resistance to tearing and snagging, improved durability, and better protection from sidewall damage.
- Maintains shape and stability for longer tyre life while offering eye-catching aesthetics and easier terrain identification.





Size	Rim Alt Rim	Tyre Type	Unloaded inflated dimension		Static Loaded Radius (mm/in)	Rolling circumference (mm/in)	PR Load Index Speed Symbol	Inflation Pressure (bar psi)	Recommended load, kg/lbs	
			SW(mm/in)	OD(mm/in)					Speed, kmph/mph	
									40	25
13.00-24	10.0, 10.00V 8.50V, 9.0, 9.00V	TT	333 13.1	1280 50.4	585 23.0	3795 149.4	10 138A8	2.3 33	2360 5203	
							12 143A8	3.0 40	2725 6007	
							14 146A8	3.3 48	3000 6614	
							16 149A8	3.7 54	3250 7165	
14.00-24	10.0, 10.00W, 10.00VA 9.0, 9.00V	TL	362 14.3	1348 53.1	602 23.7	3925 154.5	10 144A8	2.25 33	2800 6173	
							12 147A8	2.5 36	3075 6779	
							16 153A8	3.5 51	3650 8047	

## FEATURES

**Aggressive & Wide Tread with Deep Grooves**

**Directional & Straight Multiple Rib Design**

**Wide Sidewall with Thick Kerb Rib**

**Sinusoidal Buttress Design**

**Strong Nylon Casing**





# AIRLIFT<sup>®</sup>

Forklift

## *BENEFITS*

- Better Tyre Performance & Reduced Wear
- Wear Resistance / Even Wear & Longevity
- Best Suitable for Thermal Stability & Dielectric Strength
- Maximum Longevity and High Load Carrying Capacity
- Attractive Looks in Rough Terrain / Self-Cleaning & Call Attention To





Size	Rim Alt Rim	Tyre Type	Unloaded inflated dimension		Static Loaded Radius (mm/in)	Rolling circumference (mm/in)	PR Load Index Speed Symbol	Inflation Pressure (bar psi)	Recommended load, kg/lbs	
			SW(mm/in)	OD(mm/in)					Speed, kmph/mph	
									20	12
7.00-12 NHS	5.00S	TT	192 7.5	672 26.5	317 12.5	2040 80.3	12 133A5	8.5 123	2060 4542	
							14 134A5	9.0 130	2120 4674	
							16 136A5	10.0 145	2240 4938	
7.00-15 NHS	6.00 5.5	TT	203 7.9	762 30	360 14.2	2320 91.3	12 138A5	8.5 123	2360 5203	
							16 143A5	9.0 130	2725 6007	
7.50-15 NHS	6.00 5.5	TT	215 8.5	808 31.8	382 15.0	2456 96.7	12 138A5	8.25 120	2360 5203	
							16 143A5	10.0 145	2725 6007	
28X9-15 (8.15-15)' NHS	7.00 7.0BD	TT	221 8.7	706 27.8	336 13.2	2155 84.8	12 142A5	8.25 120	2650 5842	
							14 146A5	10.0 145	3000 6614	
8.25-15 NHS	6.5 7.00	TT	234 9.2	836 32.9	395 15.5	2535 99.8	12 146A5	7.0 102	3000 6614	
							14 149A5	8.0 116	3250 7165	
							16 152A5	9.25 134	3550 7826	
							18 153A5	10.0 145	3650 8047	
250-15 NHS	7.5 7.0	TT	250 9.8	735 28.9	350 13.8	2241 88.22	16 150A5	8.25 120	3350 7385	
							18 153A5	9.5 138	3650 8047	
							20 155A5	10.0 145	3875 8543	
300-15 NHS	8.0	TT	300 11.8	840 33.1	395 15.6	2550 100.4	18 160A5	8.5 123	4500 9921	
							20 164A5	9.0 131	5000 11023	
							22 165A5	10.0 145	5150 11354	



Size	Rim Alt Rim	Tyre Type	Unloaded inflated dimension		Static Loaded Radius (mm/in)	Rolling circumference (mm/in)	PR Load Index Speed Symbol	Inflation Pressure (bar psi)	Recommended load, kg/lbs	
			SW(mm/in)	OD(mm/in)					Speed, kmph/mph	
									20	12
18X7-8 NHS	4.33	TT	153 6.0	457 18	219 8.6	2540 100.0	8 115A5	7.0 105	1215 2678	
							10 116A5	8.0 116	1250 2756	
							14 121A5	9.0 131	1450 3197	
							16 125A5	10.0 145	1650 3638	
5.00-8	3.00	TT	132 5.2	467 18.4	207 8.1	1335 52.5	6 105A5	6.5 94	925 2039	
							8 106A5	8.25 120	950 2094	
							10 111A5	10.0 145	1090 2403	
6.00-9	4.00	TT	160 6.3	540 21.3	235 9.5	1545 60.8	10 118A5	8.5 123	1320 2910	
							12 121A5	10.00 145	1450 3198	
6.50-10	5.5	TT	177 6.9	588 23.1	262 10.3	1710 67.3	10 122A5	7.75 94	1500 3307	
							12 125A5	9.0 120	1650 3638	
							14 128A5	10.0 145	1800 3968	

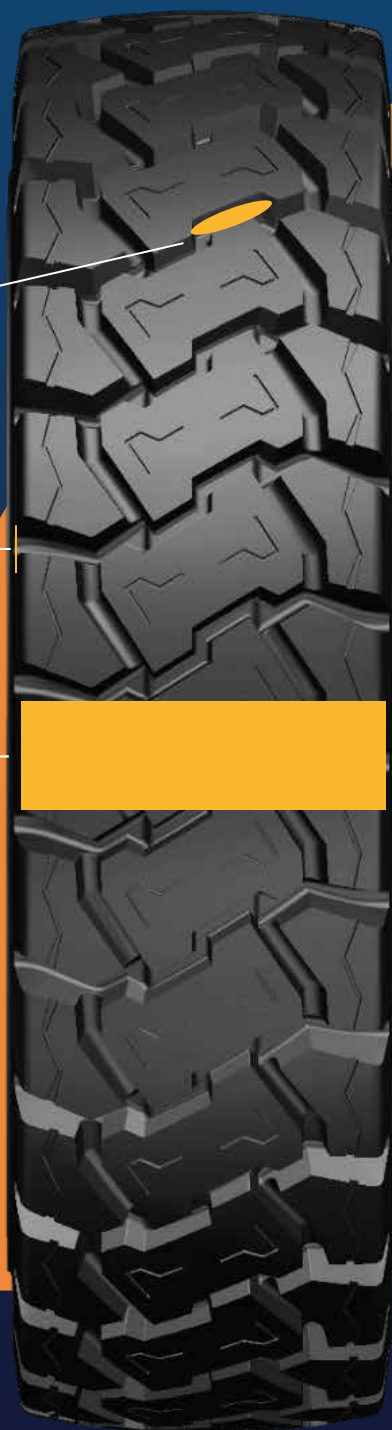


## FEATURES

**Excellent Lugs Design  
with Deep &  
Attractive Spies**

**Strong Nylon Casing**

**Special Tread Compound  
with Enhanced Tread  
Mass Distribution**



**Engineered Standard  
Tread Compound**

**Unique Lettering  
on Side Wall**



# EMPERADOR

Telehandler

## *BENEFITS*

- Directional pattern with strong lugs ensures strong grip & traction on soft & hard roads
- Higher speed & puncture resistance due to strong casing
- <sup>TM</sup> Flatter Tread provides uniform pressure distribution & high productivity





Size	Rim Alt Rim	Tyre Type	Unloaded inflated dimension		Static Loaded Radius (mm/in)	Rolling circumference (mm/in)	PR Load Index Speed Symbol	Inflation Pressure (bar psi)	Recommended load, kg/lbs	
			SW(mm/in)	OD(mm/in)					Speed, kmph/mph	
									40	25
17.5L-24	DW15L W15L	TL	450 17.7	1255 49.4	558 21.9	3752 147.7	10PR 144A8	2.2 32	2800 6173	
									16PR 152A8	3.4 49
19.5L-24	DW16LX24 W15LX24	TL	482 18.9	1305 51.4	587 23.1	3936 155	10PR 147A8	1.9 28	3075 6779	
									12PR 151A8	2.3 33

## FEATURES





# EMPERADOR

Telehandler

## *BENEFITS*

- Directional lug Pattern with heavy centre provides excellent performance on hard surfaces.
- Strong Casing to withstand high loads.
- Specially formulated tread compound for industrial applications.





**TRA Code R4**

Size	Rim Alt Rim	Tyre Type	Unloaded inflated dimension		Static Loaded Radius (mm/in)	Rolling circumference (mm/in)	PR Load Index Speed Symbol	Inflation Pressure (bar psi)
			SW (mm/in)	OD (mm/in)				
460/70R24 (17.5R24)	<b>DW15L</b> DW16L	TL	<b>470</b> 19.7	<b>1242</b> 42.1	<b>560</b> 21	<b>3704</b> 126.6	<b>159A8/156B</b>	<b>4.0</b> 58
500/70R24 (19.5R24)	<b>DW16L</b> DW15L DW18L	TL	<b>495</b> 15.9	<b>1310</b> 40.1	<b>590</b> 18.3	<b>3920</b> 120.6	<b>157A8/154B</b>	<b>3.2</b> 46
							<b>164A8/161B</b>	<b>4.0</b> 58

Static	Recommended load, kg/lbs Speed, kmph/mph						
	Constant Load					Cyclic Application	
	10	25	30	40	50	10	15
	6	16	19	25	31	6	9
<b>10063</b> 22190	<b>5469</b> 12060	<b>4638</b> 10230	<b>4550</b> 10030	<b>4375</b> 9645	<b>4000</b> 8818	<b>6563</b> 14470	<b>5863</b> 12930
<b>9485</b> 20910	<b>5155</b> 11364	<b>4370</b> 9634	<b>4290</b> 9458	<b>4125</b> 9094	<b>3750</b> 8267	<b>6185</b> 13635	<b>5525</b> 12180
<b>11500</b> 25353	<b>6250</b> 13778	<b>5300</b> 11685	<b>5200</b> 11464	<b>5000</b> 11023	<b>4625</b> 10196	<b>7500</b> 16535	<b>6700</b> 14771



## FEATURES



Attractive Sea Area Design

TM

Continuous Centre Lug

Broader Tread with Step Lug

Strong & Flexible Sidewall

Strong Radial Casing with Reinforced Belt

Unique Sidewall Lettering



# EVOLUTION ALWAYS WINS





# OTR TYRES







# TRANSFORMER

Reach stacker

## *BENEFITS*

- Ensures high load-carrying capacity and consistent, dependable performance in extreme conditions.
- Provides stronger grip with zero lug shuffling, enhancing vehicle stability and load capacity while extending tyre life.
- Offers superior casing protection, increasing durability and puncture resistance. Engineered for excellent wear resistance, maintaining optimal performance over time.
- Delivers better dimensional stability for maximum longevity and consistent shape integrity.
- Enhances visibility and aesthetics, aids self-cleaning, and draws attention even in rough terrain





Size	Rim Alt Rim	Tyre Type	Unloaded inflated dimension		Static Loaded Radius (mm/in)	Rolling circumference (mm/in)	PR Load Index Speed Symbol	Inflation Pressure (bar psi)	Recommended load, kg/lbs	
			SW(mm/in)	OD(mm/in)					Speed, kmph/mph	
									50	31
18.00-25	13.00/2.5	TL	498	1617	745	4830	32	5.75	8750	
			19.6	63.7	29.3	190.1	183B	83	19290	
							40	7.0	9750	
18.00-33	13.00/2.51N	TL	498	1891	890	5940	40	10.0	25750	
			19.0	74.0	35.0	234	221A8	145	56769	

## FEATURES

Unique Non-Directional Tread Pattern

Bigger Tyre with Broader Lugs and Aggressive Tie Bar at Centre

Custom-made cut & chip / heat-resistant compound

Extra Rubber in Tread Region

Strong Nylon Casing





# **TRANSFORMER**

Reach stacker

## ***BENEFITS***

- Ensures optimal traction and enhances overall performance.
- Extends tread life while providing superior resistance to cuts, chips, and abrasion.
- Crack-resistant sidewall offers high protection against damage.
- Robust nylon casing supports heavier loads and reduces the risk of impact breaks, snags, and punctures.





Size	Rim Alt Rim	Tyre Type	Unloaded inflated dimension		Static Loaded Radius (mm/in)	Rolling circumference (mm/in)	PR Load Index Speed Symbol	Inflation Pressure (bar psi)	Recommended load, kg/lbs	
			SW(mm/in)	OD(mm/in)					Speed, kmph/mph	
									10	6
18.00-25	13.00/2.5	TL	498 19.6	1617 63.7	745 29.3	4830 190.2	40 206A2	9.5 138	17000 37478	

## FEATURES

Deep tread with smooth contact patch

Tough, cut-resistant tread compound

Excellent fatigue-resistant sidewall designed for tough conditions

High load-carrying capacity and exceptional durability





# EMPEROR<sup>®</sup>

Wheel loader

## *BENEFITS*

- Provides superior traction and grip, enhancing vehicle stability and extending tyre life.
- Specially engineered for high resilience, offering excellent resistance to wear, cuts, and heat buildup.
- Delivers high resistance to tearing and snagging, ensuring long-lasting performance even in rough conditions.
- Protects against sidewall damage, improves driving comfort, and increases overall tyre durability.
- Ensures structural integrity, better shape retention, and maximum longevity under heavy loads.





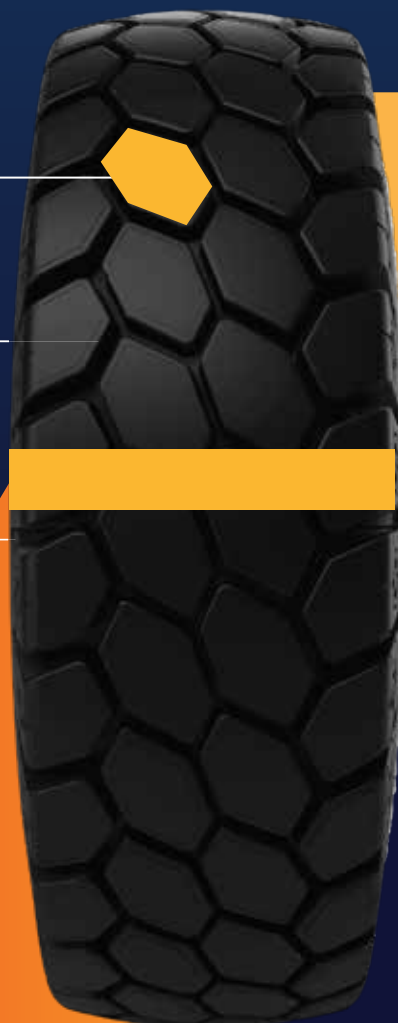
Size	Rim Alt Rim	Tyre Type	Unloaded inflated dimension		Static Loaded Radius (mm/in)	Rolling circumference (mm/in)	PR Load Index Speed Symbol	Inflation Pressure (bar psi)	Recommended load, kg/lbs	
			SW(mm/in)	OD(mm/in)					Speed, kmph/mph	
17.5-25	14.00/1.5	TL	445	1348	605	3940	16	4.75	7300	
			17.5	53.1	23.8	155.1	177A2	69	16094	
20.5-25	17.00/2.0	TL	521	1493	680	4318	12	2.5	6700	
							174A2	36	14771	
							16	3.5	8250	
							181A2	51	18188	
23.5-25	19.5/2.50	TL	597	1617	740	4805	20	4.5	9500	
							186A2	65	20944	
							24	5.3	10300	
			23.5	63.7	29.1	189.2	186A2	44	20944	
							191A2	54	24030	
							24	4.75	12500	
							196A2	69	27558	

## FEATURES

Diamond Cut  
Tread Pattern

Cut, Chip  
& Heat-Resistant  
Compound

Rugged  
Sidewall Design



Tough Tread  
Compound

Strong  
Nylon Casing



# DINESHA<sup>TM</sup>

Mining truck

## *BENEFITS*

- Delivers consistent and reliable performance even under extreme working conditions, thanks to superior load-carrying capability.
- Enhances vehicle stability and extends tyre life by providing a stronger grip and larger contact patch.
- Improves durability and puncture resistance by offering better protection to the casing.
- Ensures excellent wear resistance and maintains peak performance over long periods, even in harsh environments.
- Adds superior carcass protection, increasing resistance to impacts and punctures for extended service life.





Size	Rim Alt Rim	Tyre Type	Unloaded inflated dimension		Static Loaded Radius (mm/in)	Rolling circumference (mm/in)	PR Load Index Speed Symbol	Inflation Pressure (bar psi)	Recommended load, kg/lbs	
			SW(mm/in)	OD(mm/in)					Speed, kmph/mph	
									90	56
10.00-20	7.5 8.0	TT	278 10.9	1073 42.2	475 18.7	3170 124.8	18 144G	7.6 110	2800 6173	

## FEATURES

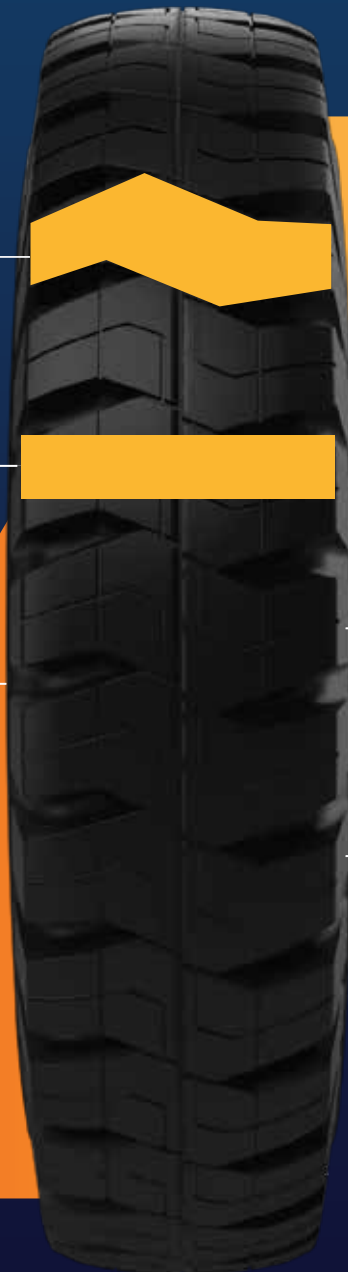
Unique Non-Directional Tread Pattern

Bigger Tyre with Broader Lugs

Custom-Made Cut & Chip / Heat-Resistant Compound

Extra Rubber in Tread Region

Four Unique Breaker Plies





Mining truck

## *BENEFITS*

- Delivers consistent and reliable performance even under extreme working conditions, thanks to superior load-carrying capability.
- Enhances vehicle stability and extends tyre life by providing a stronger grip and larger contact patch.
- Improves durability and puncture resistance by offering better protection to the casing.
- Improves durability and puncture resistance by offering better protection to the casing.
- Adds superior carcass protection, increasing resistance to impacts and punctures for extended service life.





Size	Rim Alt Rim	Tyre Type	Unloaded inflated dimension		Static Loaded Radius (mm/in)	Rolling circumference (mm/in)	PR Load Index Speed Symbol	Inflation Pressure (bar psi)	Recommended load, kg/lbs	
			SW(mm/in)	OD(mm/in)					Speed, kmph/mph	
									90	56
12.00-20	8.5 9.0	TT	315	1146	535	3415	20	7.6	3450	
			12.4	45.1	21.1	134.4	151G	110	7606	
							24	7.9	3550	
						152G	115	7826		

## FEATURES

Unique Non-Directional Tread Pattern

Bigger Tyre with Broader Lugs

Custom-made cut & chip / heat-resistant compound

Extra Rubber in Tread Region

Four Unique Breaker Plies





Mining truck

## ***BENEFITS***

- Ensures reliable and consistent performance under heavy loads and challenging conditions.
- Delivers better vehicle stability and extends tyre life through a larger contact area and improved strength.
- Enhances durability and protects against punctures, ensuring longer operational lifespan.
- Provides superior wear resistance, enabling long-term performance in demanding environments.
- Maintains shape and structural integrity under stress, resulting in a longer service life.





Size	Rim Alt Rim	Tyre Type	Unloaded inflated dimension		Static Loaded Radius (mm/in)	Rolling circumference (mm/in)	PR Load Index Speed Symbol	Inflation Pressure (bar psi)	Recommended load, kg/lbs	
			SW(mm/in)	OD(mm/in)					Speed, kmph/mph	
									90	56
12.00-24	8.5 9.0	TT	315	1247	585	3355	20	7.9	3875	
			12.4	49.1	23	132.1	155G	115	8543	
							24	8.2	4000	
						156G	119	8818		

## FEATURES

Innovative non-directional tread design

Larger tyre with wider lugs

Reinforced tread with additional rubber



Specially formulated cut, chip, and heat-resistant compound

Robust nylon casing



# GARDEN TYRES







# DUNESTAR™

Buggy / golf course

## *BENEFITS*

- Gentle on the ground, prevents turf damage.
- Provides a wider contact patch for better grip and stability.
- Ensures smoother rides and improves energy efficiency.
- Attractive look in rough terrain, self-cleaning, and grabs attention.





Size	Rim Alt Rim	Tyre Type	Unloaded inflated dimension		Static Loaded Radius (mm/in)	Rolling circumference (mm/in)	PR Load Index Speed Symbol	Inflation Pressure (bar psi)	Recommended load, kg/lbs	
			SW(mm/in)	OD(mm/in)					Speed, kmph/mph	
									15	9
20.5X8-10	6.00	TL	203 8	518 20.4	207 8.1	1365 53.7	8 90A3 10 95A3	4.8 70 6.2 90	600	
									1323	
205/50-10	6.5	TL	205 8.1	459 18.1	208 8.2	1360 53.5	4 66A3 6 81A3	2.2 32 3.2 46	300	
									661	
18X8.50-8	7.00	TL	216 8.5	460 8.1	202 7.9	1335 52.5	4 74A3 6 82A3	1.5 22 2.3 34	375	
									827	
									475	
									1047	

## FEATURES

Wide Tread with  
Higher Contact  
Patch to Reduce  
Load per Unit Area

Strong Dual Nylon  
Ply Construction  
for Increased Flexibility



Low Rolling  
Resistance Design  
to Minimize Friction

Unique Lettering  
on Sidewall for  
High Visibility



**ENGINEERED**™  
*for success*



**Rubber King Tyre Private Limited**

104, Naindhara Apartment, Sarkhej - Gandhinagar Hwy,  
Near GNFC Info Tower, Bodakdev, Ahmedabad, Gujarat, India - 380054

✉ [Global.Sales@rubberkingtyres.com](mailto:Global.Sales@rubberkingtyres.com) 🌐 [rubberkingtyres.com](http://rubberkingtyres.com) ☎ +91 75740 18383

