



Unlocking opportunities for landscapers. Your gateway to lucrative partnerships and quality design with Luxescape.

A 3D architectural rendering of a modern residential property. The house features a large, light-colored gabled roof and a stone fireplace. A wooden deck with a glass railing is visible, leading to a swimming pool with a blue mosaic tile border. The pool is surrounded by a stone patio and landscaped with various plants and flowers. The sky is blue with some clouds.

Elevate your landscaping business with Luxescape's custom design services, starting at \$997 for 2D master plans and \$1595 for 3D renders with animations. We connect clients to you for construction and can offer our design services to your clientele. Additionally, benefit from our plant sourcing and supply, as well as our project management expertise if needed. Partner with Luxescape today. Visit www.luxescape.design for more details.

CONTENTS

THE FUTURE OF LANDSCAPING

04	A Partnership With Luxescape
05	Maximise Business
06	Our Unique Offering
07	Animations
08	How We Can Work With You
09	Design Fee Packages
10	Partnerships

JOIN LUXESCAPE IN REVOLUTIONISING
LANDSCAPE DESIGN AND PLANT SUPPLY

A PARTNERSHIP WITH LUXESCAPE

Our company provides innovative landscape design services, primarily in the residential market with our head office based in Traralgon, Gippsland Victoria. Details of our business and its services can be found at www.luxescape.design and our [Luxescape Design Explainer Video](#)

We are keen to develop business relationships with landscape contractors to support our national franchise operations.

Our business focus is landscape design and supply of plants through a commercial arrangement we have with a wholesale plant nursery that operates nationally.

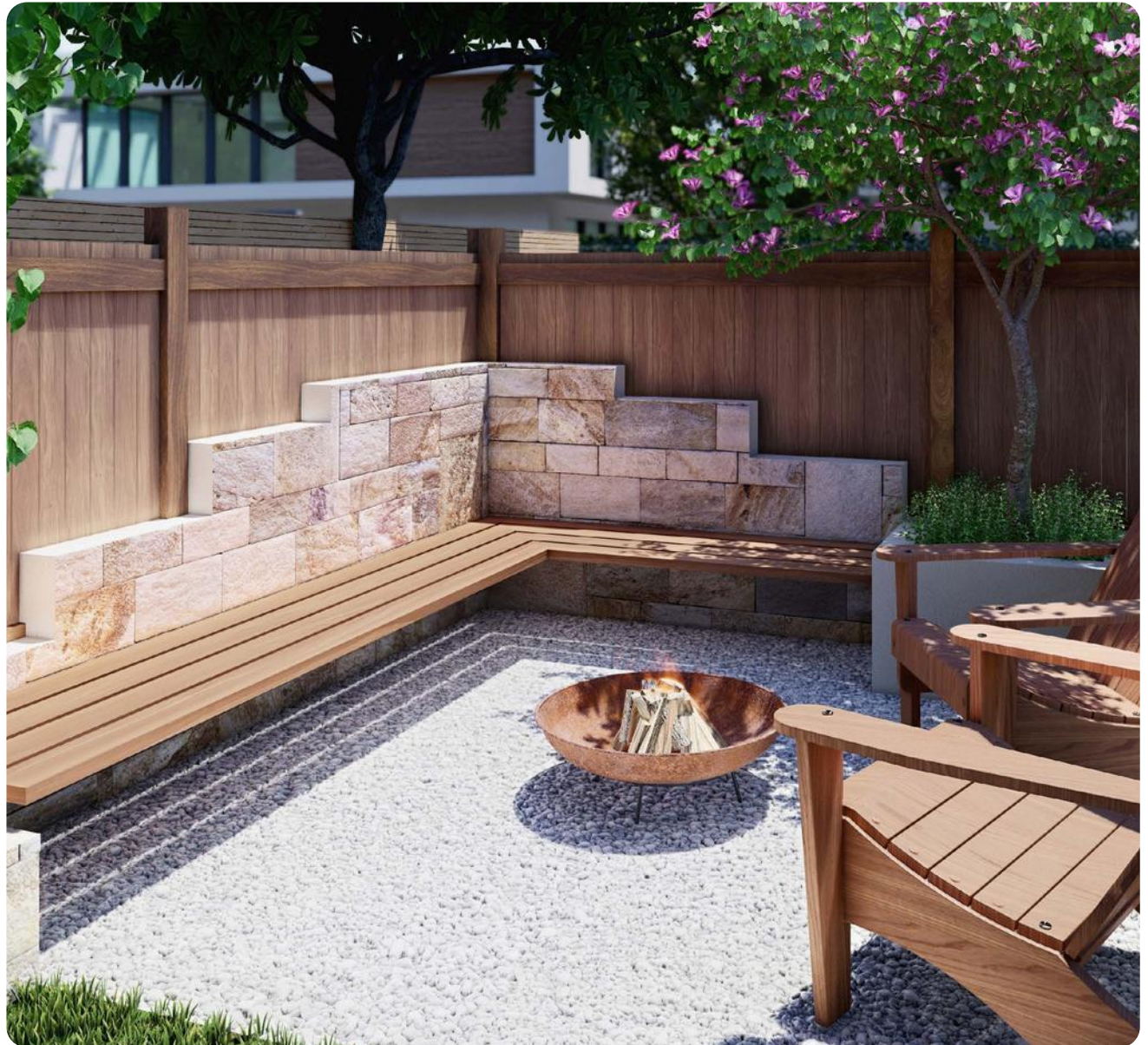


UNLOCK EXCLUSIVE BENEFITS: SEAMLESS
COLLABORATION, REFERRALS + PREMIUM PLANT SUPPLY

MAXIMISE BUSINESS WITH LUXESCAPE'S PARTNER PROGRAM

We are seeking to partner with landscape contractors who have the capability to quote and undertake construction work for our clients to a detailed landscape design and planting specification. We see the following benefits from partnering:

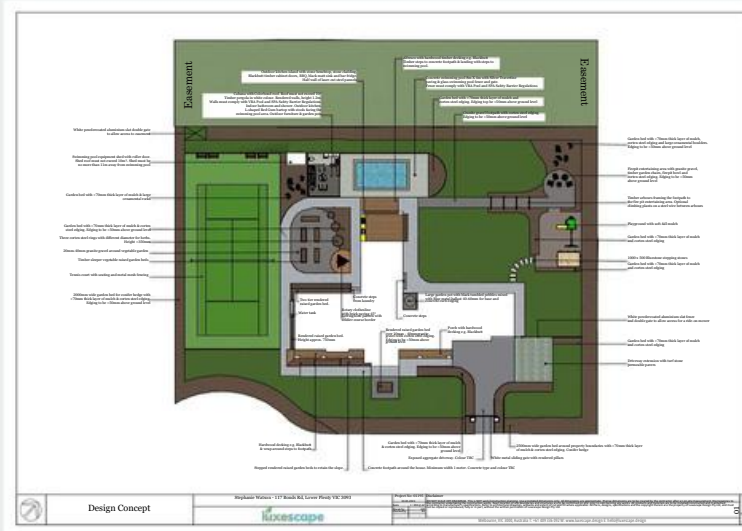
- Management of the landscape design with the client, including the production of 2D and 3D plans incorporating a schedule of building materials and plants prepared by qualified designers.
- Referral of landscaping construction work for quoting directly with our client.
- Sourcing and supply of quality plants to our partner at trade prices with suggested retail mark-up.
- Delivery of plants to site (and planting if required)



UNMATCHED SERVICES AND
DISTINCTIVE OFFERINGS:
LUXESCAPE LEADS THE INDUSTRY

OUR UNIQUE OFFERING

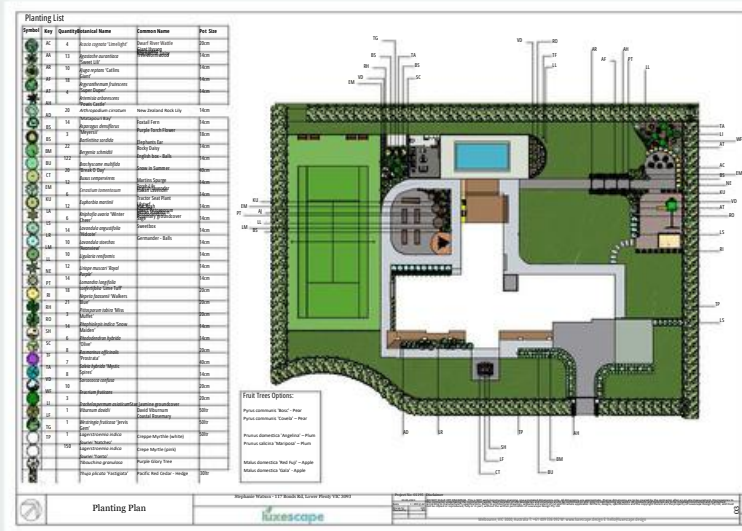
Luxescape stands out in the
industry with its comprehensive
range of services and unique
value propositions.



2D MASTER PLANS



2D MASTER PLANS



2D MASTER PLANS



3D RENDERS

**YOUR CLIENTS CAN NOW SEE A DESIGN BEFORE
YOU BUILD IT. VIEW SOME SAMPLES OF OUR
ANIMATIONS HERE:**

LYSTERFIELD PROJECT
GIPPSLAND PROJECT
SYDNEY POOL HOUSE



MAXIMISING APPEAL, GAINING COMPETITIVE EDGE, AND ENSURING SATISFACTION

THERE ARE SEVERAL WAYS WE CAN WORK WITH YOU, DEPENDING ON YOUR SITUATION

Through our innovative approach, exclusive offerings, and unwavering dedication to client satisfaction, we're here to help you unlock the full potential of your developments and create spaces that inspire, delight, and stand out from the rest. Let's embark on this journey together and create landscapes that leave a lasting impression.

1. We connect you with our clients

Most of our clients are keen to engage with quality trades during the design process. We can send the client your details and allow you to manage the introduction or we can mutually introduce you via email, zoom etc.

2. You connect your clients with us

As we are growing we are looking to expand our client base and work on new projects. If you have a client that requires a design we would love to work with you to facilitate this.

3. White label us as your design studio

By simplifying the landscape design process and delivering outstanding results, we ensure high levels of client satisfaction and repeat business.



MAXIMISING APPEAL, GAINING
COMPETITIVE EDGE, AND
ENSURING SATISFACTION

OUR DESIGN FEE PACKAGES

Introducing our transparent
pricing structure for Landscape
Design.

*For sites greater than 2000m² and/or a
block fall >0.5m, additional charges apply.

These are:
\$1 per additional m² above 2000m²

A loading for block fall:
0.5m - 1.0m + 25%
1.0m - 1.5m + 50%
1.5m - 2.0m + 75%
2.0m - 2.5m + 100%

FOR COMPREHENSIVE PACKAGES, INCLUDING 2D MASTER PLAN, 3D RENDER & ANIMATION:

Properties up to 600 m²
\$1595* inc GST

- Custom planting design for entire yard (up to 600m²)
- Dedicated design team including a landscape designer and horticulturalist
- 2D and 3D walk-around video rendering
- The opportunity to make one revision

Properties 601-1200 m²
\$2195* inc GST

- Custom planting design for entire yard (up to 1200m²)
- Dedicated design team including a landscape designer and horticulturalist
- 2D and 3D walk-around video rendering
- The opportunity to make one revision

Properties 1201-2000 m²
\$2795* inc GST

- Custom planting design for entire yard (up to 2000m²)
- Dedicated design team including a landscape designer and horticulturalist
- 2D and 3D walk-around video rendering
- The opportunity to make one revision

SIMPLIFIED PACKAGES, 2D MASTER PLAN ONLY:

Properties up to 600 m²
\$997* inc GST

- Custom planting design for entire yard (up to 600m²)
- Dedicated design team including a landscape designer and horticulturalist
- 2D master plan only
- The opportunity to make one revision

Properties 601-1200 m²
\$1347* inc GST

- Custom planting design for entire yard (up to 1200m²)
- Dedicated design team including a landscape designer and horticulturalist
- 2D master plan only
- The opportunity to make one revision

Properties 1201-2000 m²
\$1697* inc GST

- Custom planting design for entire yard (up to 2000m²)
- Dedicated design team including a landscape designer and horticulturalist
- 2D master plan only
- The opportunity to make one revision

COLLABORATING FOR SUCCESS

PARTNERSHIP

We have designed projects ranging from a construction budget of \$15,000 up to \$1.2m so we are confident we can meet your design needs and introduce you to clients of ours who need landscaping construction work.

Luxescape values enduring partnerships and by teaming up with Luxescape, you ensure the prosperity and excellence of your residential projects.

Be the next to partner with Luxescape. Let's meet face-to-face to discuss how we can work together.



**THANK YOU FOR YOUR TIME. PLEASE EMAIL
US AT HELLO@LUXESCAPE.DESIGN WITH ANY
QUESTIONS. WE LOOK FORWARD TO
COLLABORATING WITH YOU.**

