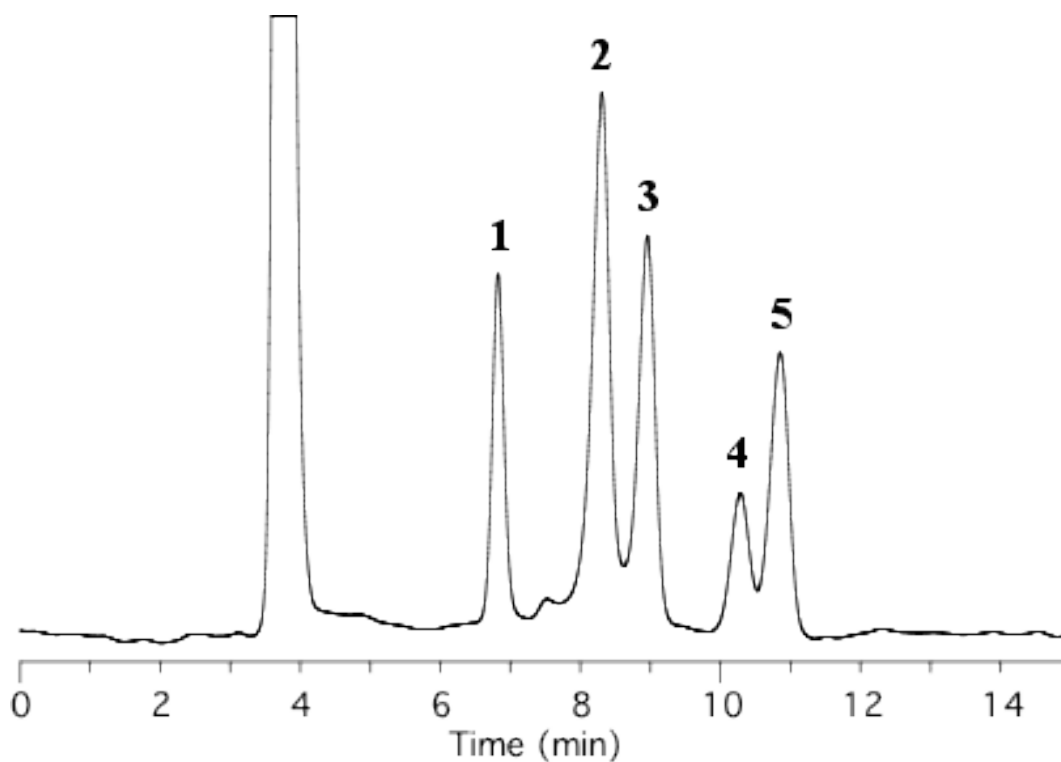


Analysis of Sugar Alcohols

Data No. LA101-0000



Column : Inertsil Diol
5 μ m
250 x 4.6 mm I.D.

Column Cat. No. : 5020-05646

Eluent : A) CH₃CN
B) H₂O
A/B = 85/15, w/w

Flow rate : 1.0 mL/min.

Col. Temp. : 40°C

Detection : RI

Injection Vol. :

Sample :

Solutes : 1. Erythritol
2. Xylitol
3. Fructose
4. Sorbitol
5. Mannitol