

# Atlantis









# A commitment to environmental responsibility and timeless design in the headwear industry.

The textile industry **ranks among the world's most polluting sectors.** A disruptive cycle of excessive production and consumption, driven by the mass manufacturing of low-quality goods, exacerbates this critical issue. **We stand firmly against this trend,** dedicating our efforts to sourcing high-quality materials, ensuring responsible production processes, and committing to ongoing research and development. **Our mission is to create products designed for longevity and sustainability.**

# Our responsibility





We are serious about **our sustainable mission** and want to prove that we are **transparent and trustworthy** through partners who promote the highest standards in the industry.

We want our hats to be on people's heads **for as long as possible** since **high-quality headwear has a longer life cycle**.

Through collaborations with **international standards and associations**, we want to give consumers the certainty that the products they buy **have been accredited by a third party**. This means that **our products are made responsibly** and that we work with all partners in our supply chain to adhere to **strict environmental and social standards**.

**Sedex**  
B MEMBER - ZC1009145



**bluesign**  
SYSTEM PARTNER



**CIKIS  
STUDIO**



**eurofins**

**PPAI**  
# 753003

**AGI**  
# 37380

# Sustainability continues to be at the forefront of Atlantis Headwear's design philosophy.

Every collection has been a step in our transformation and sustainability continues to shape the way we imagine, develop and deliver our products.

When we design and when our customers choose to buy them, both sides make decisions that generate impact.



To reduce our Scope 3 emissions, we've chosen to offer more than a product: **a vision, a responsible way of seeing and doing things.** Guided by our Sustainability Framework, **we identified the components where we could meaningfully reduce our environmental footprint,** without compromising Atlantis' identity.

This evolution is now visible across the collection. **Several bestsellers will be available in new preferred-materials versions, marked with the "-S" suffix, maintaining the quality and style our community loves while lowering their impact.** Recycled fibers, organic fabrics, low-impact solutions. **The same Atlantis spirit, made more responsible.**

Our commitment is also strengthened by **new certifications: GRS (Global Recycled Standard) and GOTS (Global Organic Textile Standard),** ensuring high environmental and social criteria throughout our supply chain.

A transformation made of thoughtful choices and almost invisible details. Because the future is shaped by what you wear, and by what you choose not to leave behind. That's what we mean when we say: **make the responsible choice possible.**



Headwear designed  
to look good and  
do good.





Atlantis Headwear was founded in the 1990s with a clear mission: **to create headwear that people could love, wear proudly, and truly make their own.** From the start, we aimed to be different, crafting something lasting, not just ‘another hat.’ As our caps gained popularity and reached customers worldwide, we recognized an opportunity to do more than produce high-quality headwear: **we wanted to make a meaningful positive impact.**

Sustainability became a central part of our story in 2021, when we set the ambition to shift our entire collection toward preferred materials, moving beyond isolated sustainable capsules. This commitment goes beyond simply switching materials; **it represents a comprehensive transformation.** Every element we use, down to the smallest details such as taping and buckram, has been carefully reconsidered to find sustainable alternatives without compromising the quality our customers expect.

This transformation has not only **reduced our environmental footprint** but also allowed us to listen closely to the market and improve the hats themselves. We refined their shapes, colors, and performance. Achieving this milestone required years of research, hundreds of tests, and unwavering dedication. Today, we are proud to offer headwear that not only looks good but also does good. With every cap we produce, **we are committed to contributing to a better, more sustainable future.**

# Egon

NEW

- Main Fabric: 80% organic cotton - 20% recycled cotton
- Texture: twill



WHITE



GREY



DARK GREY



KHAKI



BLACK



NAVY



OLIVE



RED



ROYAL

---

## TECH SPECS

ONE SIZE · 200 GSM · HOOK & LOOP CLOSURE

---

## FEATURES

CURVED VISOR

---

## SUSTAINABLE FEATURES

RECYCLED BUCKRAM · RECYCLED VISOR

IMPACT REDUCTION: -20% CO<sub>2</sub>eq\* · 0,683 kg CO<sub>2</sub> eq



Buckram 100% GRS Recycled Polyester  
 Visor 100% GRS Recycled Polyethylene  
 Certified by ICEA  
 ICEA-TX- 3146



Taping 100% GRS Recycled Polyester  
Visor 100% GRS Recycled Polyethylene  
Certified by ICEA  
ICEA-TX- 3146



# Dad Hat-S Five

NEW

- Main Fabric: 80% organic cotton - 20% recycled cotton
- Texture: twill



---

## TECH SPECS

ONE SIZE · 270 GSM · FULL METAL BUCKLE WITH METAL HOLE

---

## FEATURES

MID VISOR · UNSTRUCTURED FRONT PANEL · GARMENT WASHING

---

## SUSTAINABLE FEATURES

RETRAZE® RECYCLED VISOR · SELF FABRIC SWEATBAND  
IMPACT REDUCTION: -21% CO<sub>2</sub>eq\* · 0,897 kg CO<sub>2</sub> eq

# Paka

NEW

- Main Fabric: 100% recycled polyester
- Texture: twill



WHITE - BLACK

DARK GREY - WHITE

BLACK - WHITE

NAVY - WHITE

---

## TECH SPECS

ONE SIZE · 200 GSM · RECYCLED SNAPBACK CLOSURE

---

## FEATURES

CURVED VISOR · ROPE AROUND BILL

---

## SUSTAINABLE FEATURES

RECYCLED BUCKRAM · RECYCLED POLYESTER SWEATBAND · RETRAZE®  
RECYCLED VISOR · IMPACT REDUCTION: -19% CO<sub>2</sub>eq\* · 0,646 kg CO<sub>2</sub> eq



Main fabric, Taping, Buckram  
100% GRS Recycled Polyester  
Visor 100% GRS Recycled Polyethylene  
Certified by ICEA  
ICEA-TX- 3146

# Chao

NEW

- Main Fabric: 80% organic cotton - 20% recycled cotton
- Texture: canvas



DARK GREY



KHAKI



BLACK



NAVY



OLIVE



---

## TECH SPECS

ONE SIZE · 255 GSM · RECYCLED SNAPBACK CLOSURE

---

## FEATURES

FLAT VISOR · GARMENT WASHING · UNSTRUCTURED FRONT PANEL  
ROPE AROUND BILL

---

## SUSTAINABLE FEATURES

RETRAZE® RECYCLED VISOR · SELF FABRIC SWEATBAND  
IMPACT REDUCTION: -21% CO<sub>2</sub>eq\* · 0,924 kg CO<sub>2</sub> eq



Taping 100% GRS Recycled Polyester  
Visor 100% GRS Recycled Polyethylene  
Certified by ICEA  
ICEA-TX- 3146

# Darwin

NEW

- Main Fabric: 80% organic cotton - 20% recycled cotton
- Texture: canvas



TECH SPECS	ONE SIZE · 255 GSM · RIBBON WITH PLASTIC CLIP CLOSURE
FEATURES	FLAT VISOR · ADJUSTABLE VISOR · UNSTRUCTURED FRONT PANEL GARMENT WASHING
SUSTAINABLE FEATURES	RETRAZE® RECYCLED VISOR · SELF FABRIC SWEATBAND IMPACT REDUCTION: -20% CO <sub>2</sub> eq* · 0,792 kg CO <sub>2</sub> eq



Taping 100% GRS Recycled Polyester  
Visor 100% GRS Recycled Polyethylene  
Certified by ICEA  
ICEA-TX- 3146



Main Fabric, Taping, Buckram  
 100% GRS Recycled Polyester  
 Mesh 95% GRS Recycled Polyester  
 Sweatband 91% GRS Recycled Polyester  
 Visor 100% GRS Recycled Polyethylene  
 Certified by ICEA  
 ICEA-TX- 3146



# Nila

NEW

- **Front & Bill:** 100% recycled polyester
- **Side & Back:** 95% recycled polyester - 5% elastane
- **Texture:** microtwill



DARK GREY - BLACK



BLACK - BLACK



NAVY - BLACK

---

## TECH SPECS

ONE SIZE · 150 GSM · FULLY CLOSED ON BACK

## FEATURES

MID VISOR · UPF 50+ PROTECTION · WATER RESISTANT - PFC FREE

## SUSTAINABLE FEATURES

RECYCLED BUCKRAM · RECYCLED ELASTIC SWEATBAND · RETRAZE®  
 RECYCLED VISOR · IMPACT REDUCTION: -20% CO<sub>2</sub>eq\* · 0,657 kg CO<sub>2</sub> eq

# Dempo

NEW

- **Main Fabric:** 100% recycled polyester
- **Side & Back:** 95% recycled polyester - 5% elastane
- **Texture:** jacquard



DARK GREY - BLACK



BLACK - BLACK



NAVY - BLACK



RED - BLACK



ROYAL - BLACK

---

## TECH SPECS

ONE SIZE · 162 GSM · RECYCLED RUBBER HOOK & LOOP CLOSURE

---

## FEATURES

MID VISOR

---

## SUSTAINABLE FEATURES

RECYCLED BUCKRAM · RECYCLED DRY-TECH SWEATBAND · RETRAZE®  
 RECYCLED VISOR · IMPACT REDUCTION: -18% CO<sub>2</sub>eq\* · 0,588 kg CO<sub>2</sub> eq



Main Fabric, Sweatband, Taping, Buckram  
 100% GRS Recycled Polyester  
 Mesh 95% GRS Recycled Polyester  
 Visor 100% GRS Recycled Polyethylene  
 Certified by ICEA  
 ICEA-TX- 3146

# Teon

NEW

- Front & Bill: 50% recycled cotton - 50% cotton
- Side & Back: 100% recycled polyester
- Texture: twill



BURGUNDY - KHAKI



BLACK - KHAKI



NAVY - KHAKI



OLIVE - KHAKI

---

## TECH SPECS

ONE SIZE · 260 GSM · HOOK & LOOP CLOSURE

---

## FEATURES

MID VISOR · UNSTRUCTURED FRONT PANEL · PIGMENT DYEING · SOFT MESH

---

## SUSTAINABLE FEATURES

RECYCLED POLYESTER SWEATBAND · RECYCLED VISOR  
IMPACT REDUCTION: -19% CO<sub>2</sub>eq\* · 0,660 kg CO<sub>2</sub> eq



Main Fabric 50% GRS Recycled Cotton  
Mesh, Sweatband, Taping,  
100% GRS Recycled Polyester  
Visor 100% GRS Recycled Polyethylene  
Certified by ICEA  
ICEA-TX- 3146

# Iraya

NEW

- Main Fabric: 50% recycled cotton - 50% cotton
- Texture: denim twill



DARK DENIM



DENIM



LIGHT DENIM

---

## TECH SPECS

ONE SIZE · 339 GSM · FULL METAL BUCKLE WITH METAL HOLE

---

## FEATURES

MID VISOR · UNSTRUCTURED FRONT PANEL

---

## SUSTAINABLE FEATURES

DYSTAR® DYEING · RETRAZE® RECYCLED VISOR · ORGANIC COTTON SWEATBAND · IMPACT REDUCTION: -16% CO<sub>2</sub>eq\* · 0,871 kg CO<sub>2</sub> eq



Main Fabric 50% GRS Recycled Cotton  
Taping 100% GRS Recycled Polyester  
Visor 100% GRS Recycled Polyethylene  
Certified by ICEA  
ICEA-TX- 3146





Main Fabric 50% GRS Recycled Cotton  
 Taping 100% GRS Recycled Polyester  
 Visor 100% GRS Recycled Polyethylene  
 Certified by ICEA  
 ICEA-TX- 3146



# Ruby

NEW

- Main Fabric: 50% recycled cotton - 50% cotton
- Texture: denim twill



DARK DENIM



DENIM



LIGHT DENIM

## TECH SPECS

ONE SIZE · 339 GSM · FULL METAL BUCKLE WITH METAL HOLE

## FEATURES

FLAT VISOR · ADJUSTABLE VISOR · UNSTRUCTURED FRONT PANEL

## SUSTAINABLE FEATURES

DYSTAR® DYEING · RETRAZE® RECYCLED VISOR · ORGANIC COTTON  
 SWEATBAND · IMPACT REDUCTION: -20% CO<sub>2</sub>eq\* · 0,934 kg CO<sub>2</sub> eq

# Dana

NEW

- Main Fabric: 50% recycled cotton - 50% cotton
- Texture: denim twill



DARK DENIM



DENIM



LIGHT DENIM

TECH SPECS

ONE SIZE · 339 GSM

FEATURES

SOFT CROWN

SUSTAINABLE FEATURES

DYSTAR® DYEING · ORGANIC COTTON SWEATBAND  
IMPACT REDUCTION: -17% CO<sub>2</sub>eq\* · 1,320 kg CO<sub>2</sub> eq



Main Fabric 50% GRS Recycled Cotton  
Taping 100% GRS Recycled Polyester  
Certified by ICEA  
ICEA-TX- 3146

# Severny

NEW

- Main Fabric: 100% recycled polyester
- Texture: corduroy



BROWN



BLACK



NAVY



OLIVE



STONE

---

## TECH SPECS

ONE SIZE · 230 GSM · RECYCLED SNAPBACK CLOSURE

---

## FEATURES

FLAT VISOR · ADJUSTABLE VISOR · UNSTRUCTURED FRONT PANEL

---

## SUSTAINABLE FEATURES

RECYCLED POLYESTER SWEATBAND · RETRAZE® RECYCLED VISOR  
IMPACT REDUCTION: -20% CO<sub>2</sub>eq\* · 0,568 kg CO<sub>2</sub> eq



Main fabric, Sweatband, Taping, Buckram  
100% GRS Recycled Polyester  
Visor 100% GRS Recycled Polyethylene  
Certified by ICEA  
ICEA-TX- 3146

# Cumbre

NEW

- **Main Fabric:** 100% recycled polyester
- **Lining:** 100% recycled polyester
- **Texture:** corduroy



BURGUNDY



BROWN



BLACK



NAVY



STONE

TECH SPECS

ONE SIZE · 230 GSM

FEATURES

SOFT CROWN

SUSTAINABLE FEATURES

RECYCLED POLYESTER SWEATBAND

IMPACT REDUCTION: -20% CO<sub>2</sub>eq\* · 0,654 kg CO<sub>2</sub> eq



Main Fabric, Lining  
100% GRS Recycled Polyester  
Certified by ICEA  
ICEA-TX- 3146



Main Fabric, Sweatband  
100% GRS Recycled Polyester  
Band 91% GRS Recycled Polyester  
Visor 100% GRS Recycled Polyethylene  
Certified by ICEA  
ICEA-TX- 3146



# Teide

NEW

- **Main Fabric:** 100% textile-to-textile recycled polyester
- **Texture:** microfiber



WHITE - BLACK



BLACK - DK GREY

---

## TECH SPECS

ONE SIZE · 105 GSM · ADJUSTABLE CLOSURE WITH RECYCLED ELASTIC BAND AND METAL BUCKLE

---

## FEATURES

MID VISOR · CONTRAST COLOR UNDERBILL · SOFT DETAIL ON VISOR  
MOISTURE-WICKING

---

## SUSTAINABLE FEATURES

RECYCLED DRY-TECH SWEATBAND · RECYCLED VISOR  
IMPACT REDUCTION: -15% CO<sub>2</sub>eq\* · 0,445 kg CO<sub>2</sub> eq

# Gorely

NEW

• Main Fabric: 100% recycled polyester



BLACK MELANGE



LIGHT AVIO MELANGE



LILAC MELANGE



BEIGE MELANGE



LIGHT GREY MELANGE

TECH SPECS

ONE SIZE · 95 G

FEATURES

SEAMLESS · CHUNKY LOOK · MELANGE EFFECT

SUSTAINABLE FEATURES

IMPACT REDUCTION: -23% CO<sub>2</sub>eq\* · 0,769 kg CO<sub>2</sub> eq



100% GRS Recycled Polyester  
Certified by ICEA  
ICEA-TX- 3146

# Nantai

NEW

• Main Fabric: 100% recycled merino wool



BLACK



NAVY

TECH SPECS

23,5 x 50,5 CM · 150 GSM

FEATURES

THERMAL REGULATION · ANTIBACTERIAL PROPERTIES · COMPACT DESIGN

SUSTAINABLE FEATURES

IMPACT REDUCTION: -79% CO<sub>2</sub>eq\* · 0,919 kg CO<sub>2</sub> eq



# Baru

NEW

• Main Fabric: 100% recycled merino wool



BLACK



NAVY

---

TECH SPECS

ONE SIZE · 150 GSM

---

FEATURES

THERMAL REGULATION · ANTIBACTERIAL PROPERTIES · COMPACT DESIGN

---

SUSTAINABLE FEATURES

IMPACT REDUCTION: -73% CO<sub>2</sub>eq\* · 0,709 kg CO<sub>2</sub> eq





100% GRS Recycled Polyester  
Certified by ICEA  
ICEA-TX- 3146

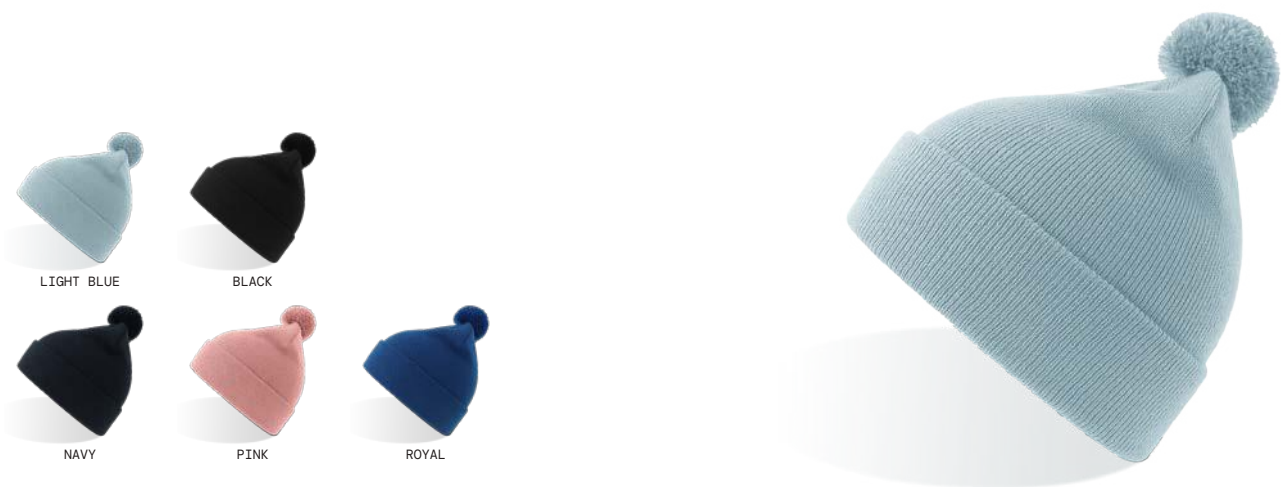


STANDARD  
100  
SH020 220679  
TESTEX

# Kid Wind-S with Pompom

• Main Fabric: 100% recycled polyester

NEW



TECH SPECS

KIDS SIZE · 65 G

SUSTAINABLE FEATURES

IMPACT REDUCTION: -22% CO<sub>2</sub>eq\* · 0,550 kg CO<sub>2</sub> eq

# Bolt-S

NEW

- Main Fabric: 62% recycled polyester - 38% polyester
- Texture: twill



TECH SPECS	ONE SIZE · 200 GSM · HIGH QUALITY HOOK & LOOP CLOSURE
FEATURES	CURVED VISOR · STRETCHABLE FABRIC
SUSTAINABLE FEATURES	RECYCLED BUCKRAM · RECYCLED DRY-TECH SWEATBAND · RETRAZE® RECYCLED VISOR · IMPACT REDUCTION: -16% CO <sub>2</sub> eq* · 0,617 kg CO <sub>2</sub> eq



Main Fabric 62% GRS Recycled Polyester  
Sweatband, Taping, Buckram  
100% GRS Recycled Polyester  
Visor 100% GRS Recycled Polyethylene  
Certified by ICEA  
ICEA-TX- 3146

# Rapper Jersey-S

NEW

- Front & Bill: 95% recycled polyester - 5% elastane
- Side & Back: 100% recycled polyester
- Texture: jersey



BLACK - BLACK

NAVY - NAVY

TECH SPECS	ONE SIZE · 200 GSM · RECYCLED SNAPBACK CLOSURE
FEATURES	MID VISOR
SUSTAINABLE FEATURES	RECYCLED BUCKRAM · RECYCLED POLYESTER SWEATBAND · RETRAZE® RECYCLED VISOR · IMPACT REDUCTION: -19% CO <sub>2</sub> eq* · 0,637 kg CO <sub>2</sub> eq



Main Fabric 95% GRS Recycled Polyester  
Mesh, Sweatband, Taping, Buckram  
100% GRS Recycled Polyester  
Visor 100% GRS Recycled Polyethylene  
Certified by ICEA  
ICEA-TX- 3146





# Action-S

- **Main Fabric:** 80% organic cotton - 20% recycled cotton
- **Texture:** twill



WHITE



BURGUNDY



COLUMBIA BLUE



GREY



DARK GREY



KHAKI



BROWN



BLACK



NAVY



OLIVE



RED



PINK



STONE

---

## TECH SPECS

ONE SIZE · 280 GSM · SUNDAY BUCKLE CLOSURE

---

## FEATURES

CURVED VISOR · METAL EYELETS · GARMENT WASHING  
UNSTRUCTURED FRONT PANEL

---

## SUSTAINABLE FEATURES

RETRAZE® RECYCLED VISOR  
IMPACT REDUCTION: -22% CO<sub>2</sub>eq\* · 0,850 kg CO<sub>2</sub> eq



Taping 100% GRS Recycled Polyester  
Visor 100% GRS Recycled Polyethylene

Certified by ICEA  
ICEA-TX-3146



100% GRS Recycled Polyester  
Certified by ICEA  
ICEA-TX-3146



STANDARD  
100  
SH020 220679  
TESTEX



# Andy

• Main Fabric: 100% recycled polyester



ACID GREEN



BEIGE



BURGUNDY



LIGHT GREY



DARK GREY



MUSTARD



BLACK



NAVY



OLIVE

TECH SPECS

ONE SIZE · 82 G · SEAMLESS

SUSTAINABLE FEATURES

IMPACT REDUCTION: -22% CO<sub>2</sub>eq\* · 0,679 kg CO<sub>2</sub> eq

# Army-S

- **Main Fabric:** 80% organic cotton - 20% recycled cotton
- **Lining:** 100% recycled polyester
- **Texture:** ripstop



BLACK



OLIVE

---

## TECH SPECS

ONE SIZE · 215 GSM · HOOK & LOOP CLOSURE

---

## FEATURES

CURVED VISOR · GARMENT WASHING

---

## SUSTAINABLE FEATURES

R-PET SWEATBAND · RECYCLED VISOR

IMPACT REDUCTION: -20% CO<sub>2</sub>eq\* · 0,830 kg CO<sub>2</sub> eq



Lining, Sweatband, Taping  
100% GRS Recycled Polyester

Certified by ICEA  
ICEA-TX-3146

# Bandana Goal-S

• Main Fabric: 100% recycled polyester



ORANGE



WHITE



COLUMBIA BLUE



YELLOW



BLACK



NAVY



RED



PINK



ROYAL



GREEN

TECH SPECS

50x50 · 115 G

SUSTAINABLE FEATURES

IMPACT REDUCTION: -18% CO<sub>2</sub>eq\* · 0,398 kg CO<sub>2</sub> eq



100% GRS Recycled Polyester

Certified by ICEA  
ICEA-TX-3146

# Bank Five-S

- Main Fabric: 100% recycled polyester
- Bill & Underbill: 100% recycled polyester
- Texture: microfiber



BURGUNDY-BLACK    LIGHT GREY-BLACK    DARK GREY-BLACK    BLACK-BLACK



NAVY-BLACK    KHAKEI - BLACK    OLIVE - BLACK    ROYAL - BLACK

TECH SPECS	ONE SIZE · 120 GSM · RECYCLED SNAPBACK CLOSURE
FEATURES	FLAT VISOR · LASER HOLES
SUSTAINABLE FEATURES	RECYCLED BUCKRAM · R-PET SWEATBAND · RETRAZE® RECYCLED VISOR IMPACT REDUCTION: -22% CO <sub>2</sub> eq* · 0,579 kg CO <sub>2</sub> eq



Main Fabric, Sweatband, Taping, Buckram  
100% GRS Recycled Polyester  
Visor 100% GRS Recycled Polyethylene  
Certified by ICEA  
ICEA-TX-3146



Main Fabric, Sweatband, Taping, Buckram  
100% GRS Recycled Polyester  
Visor 100% GRS Recycled Polyethylene

Certified by ICEA  
ICEA-TX-3146



# Beat-S

- Main Fabric: 100% recycled polyester
- Texture: twill



WHITE



GREY



DARK GREY



KHAKI



BLACK



NAVY



RED



ROYAL



BOTTLE GREEN



CAMOUFLAGE-BLACK

---

## TECH SPECS

ONE SIZE · 300 GSM · RECYCLED SNAPBACK CLOSURE

---

## FEATURES

MID VISOR

---

## SUSTAINABLE FEATURES

RECYCLED BUCKRAM · R-PET SWEATBAND · RETRAZE® RECYCLED VISOR  
IMPACT REDUCTION: -23% CO<sub>2</sub>eq\* · 0,612 kg CO<sub>2</sub> eq

# Bill-S

- **Main Fabric:** 100% recycled polyester
- **Lining:** 100% recycled polyester



DARK GREY



BLACK



NAVY

---

TECH SPECS

ONE SIZE · 105 G

---

SUSTAINABLE FEATURES

FULL R-PET FLEECE LINING · POLARTEC®  
IMPACT REDUCTION: -23% CO<sub>2</sub>eq\* · 0,846 kg CO<sub>2</sub> eq



100% GRS Recycled Polyester  
Certified by ICEA  
ICEA-TX-3146

# Birk

• Main Fabric: 100% recycled polyester



DARK GREY



BLACK



NAVY



ROYAL

TECH SPECS

ONE SIZE · 30 G

FEATURES

COMPACT DESIGN · FLATLOCK SEAMS

SUSTAINABLE FEATURES

IMPACT REDUCTION: -20% CO<sub>2</sub>eq\* · 0,292 kg CO<sub>2</sub> eq



100% GRS Recycled Polyester

Certified by ICEA  
ICEA-TX-3146

# Bond-S

• Main Fabric: 97% recycled polyester - 3% elastane



WHITE



BLACK



NAVY

TECH SPECS	ONE SIZE · 190 GSM · QUALITY HOOK & LOOP CLOSURE
FEATURES	CURVED VISOR · BONDED TAPING · WATER RESISTANT - PFC FREE UPF50+
SUSTAINABLE FEATURES	RECYCLED DRY-TECH · RECYCLED BUCKRAM IMPACT REDUCTION: -21% CO <sub>2</sub> eq* · 0,591 kg CO <sub>2</sub> eq



Main Fabric 97% GRS Recycled Polyester  
Sweatband, Taping, Buckram  
100% GRS Recycled Polyester  
Visor 100% GRS Recycled Polyethylene  
Certified by ICEA  
ICEA-TX-3146



100% GRS Recycled Polyester  
 Certified by ICEA  
 ICEA-TX-3146



STANDARD  
 100  
 SH020 220679  
 TESTEX

# Brad-S

- Main Fabric: 100% recycled polyester yarn



LT GREY MELANGE



DK GREY MELANGE



BLACK



NAVY



OLIVE

TECH SPECS

ONE SIZE · 74 G

FEATURES

DUAL STYLE · BEANIE WITH RIBS

SUSTAINABLE FEATURES

IMPACT REDUCTION: -22% CO<sub>2</sub>eq\* · 0,630 kg CO<sub>2</sub> eq

# Breezy-S

• Main Fabric: 100% recycled nylon




---

## TECH SPECS

ONE SIZE · 120 GSM · RECYCLED SNAPBACK CLOSURE

---

## FEATURES

MID VISOR · WATER RESISTANT - PFC FREE · LASER HOLES

---

## SUSTAINABLE FEATURES

RETRAZE® RECYCLED VISOR · RECYCLED DRY-TECH SWEATBAND  
 RECYCLED BUCKRAM · IMPACT REDUCTION: -33% CO<sub>2</sub>eq\*  
 0,431 kg CO<sub>2</sub> eq



Main Fabric 100% GRS Recycled Nylon  
 Sweatband, Taping, Buckram  
 100% GRS Recycled Polyester  
 Visor 100% GRS Recycled Polyethylene  
 Certified by ICEA  
 ICEA-TX-3146

# Bryce

- Main Fabric: 100% recycled polyester
- Side & Back: 100% recycled polyester
- Texture: twill



WHITE-WHITE



DARK GREY-BLACK



KHAKI-BLACK



BLACK-WHITE



BLACK-DARK GREY



BLACK-BLACK



NAVY-WHITE



NAVY-NAVY



OLIVE-BLACK



RED-RED



ROYAL-BLACK



GREY-BLACK

## TECH SPECS

ONE SIZE · 200 GSM · RECYCLED SNAPBACK CLOSURE

## FEATURES

MID VISOR

## SUSTAINABLE FEATURES

RECYCLED BUCKRAM · RETRAZE® RECYCLED VISOR  
 SELF FABRIC SWEATBAND · IMPACT REDUCTION: -21% CO<sub>2</sub>eq\*  
 0,495 kg CO<sub>2</sub> eq



Main Fabric, Taping, Buckram  
 100% GRS Recycled Polyester  
 Mesh 72% GRS Recycled Polyester  
 Visor 100% GRS Recycled Polyethylene

Certified by ICEA  
 ICEA-TX-3146

# Bucket Cotton-S

- Main Fabric: 80% organic cotton - 20% recycled cotton
- Texture: twill



WHITE



GREY



DARK GREY



KHAKI



BLACK



NAVY



OLIVE



RED



ROYAL

TECH SPECS

ONE SIZE · 200 GSM

SUSTAINABLE FEATURES

SELF FABRIC SWEATBAND · IMPACT REDUCTION: -15% CO<sub>2</sub>eq\*  
0,952 kg CO<sub>2</sub> eq



Taping 100%  
GRS Recycled Polyester  
Certified by ICEA  
ICEA-TX-3146



100% GRS Recycled Polyester  
Certified by ICEA  
ICEA-TX-3146



# Bucket Pocket-S

- Main Fabric: 100% recycled polyester
- Texture: ripstop



MUSTARD-BLACK



BLACK-GREY



NAVY-GREY



OLIVE-LIGHT OLIVE

TECH SPECS

ONE SIZE · 85 GSM

FEATURES

REVERSIBLE · FOLDABLE · LOOP STRING · WATER RESISTANT PFC FREE

SUSTAINABLE FEATURES

IMPACT REDUCTION: -19% CO<sub>2</sub>eq\* · 0,473 kg CO<sub>2</sub> eq

# Champion-S

- Main Fabric: 100% recycled polyester
- Texture: twill



BLACK



NAVY

---

## TECH SPECS

ONE SIZE · 300 GSM · FULL METAL BUCKLE WITH SEWN HOLE

---

## FEATURES

CURVED VISOR

---

## SUSTAINABLE FEATURES

RETRAZE® RECYCLED VISOR · RECYCLED BUCKRAM

IMPACT REDUCTION: -21% CO<sub>2</sub>eq\* · 0,641 kg CO<sub>2</sub> eq



Main Fabric, Sweatband, Taping, Buckram  
100% GRS Recycled Polyester

Visor 100% GRS Recycled Polyethylene

Certified by ICEA  
ICEA-TX-3146



# Cordy-S

- Main Fabric: 100% recycled polyester
- Texture: corduroy



GREY



BROWN



BLACK



NAVY



STONE



BURGUNDY

NEW



OLIVE

NEW



## TECH SPECS

ONE SIZE · 230 GSM · FULL METAL BUCKLE WITH METAL HOLE

## FEATURES

CURVED VISOR

## SUSTAINABLE FEATURES

RECYCLED BUCKRAM · R-PET SWEATBAND · RETRAZE® RECYCLED VISOR  
 IMPACT REDUCTION: -21% CO<sub>2</sub>eq\* · 0,556 kg CO<sub>2</sub> eq



Main Fabric, Sweatband, Taping, Buckram  
 100% GRS Recycled Polyester  
 Visor 100% GRS Recycled Polyethylene  
 Certified by ICEA  
 ICEA-TX-3146

# Creep-S

- Main Fabric: 100% recycled polyester
- Texture: corduroy



BURGUNDY

DARK GREY

BLACK

NAVY

OLIVE

STONE

## TECH SPECS

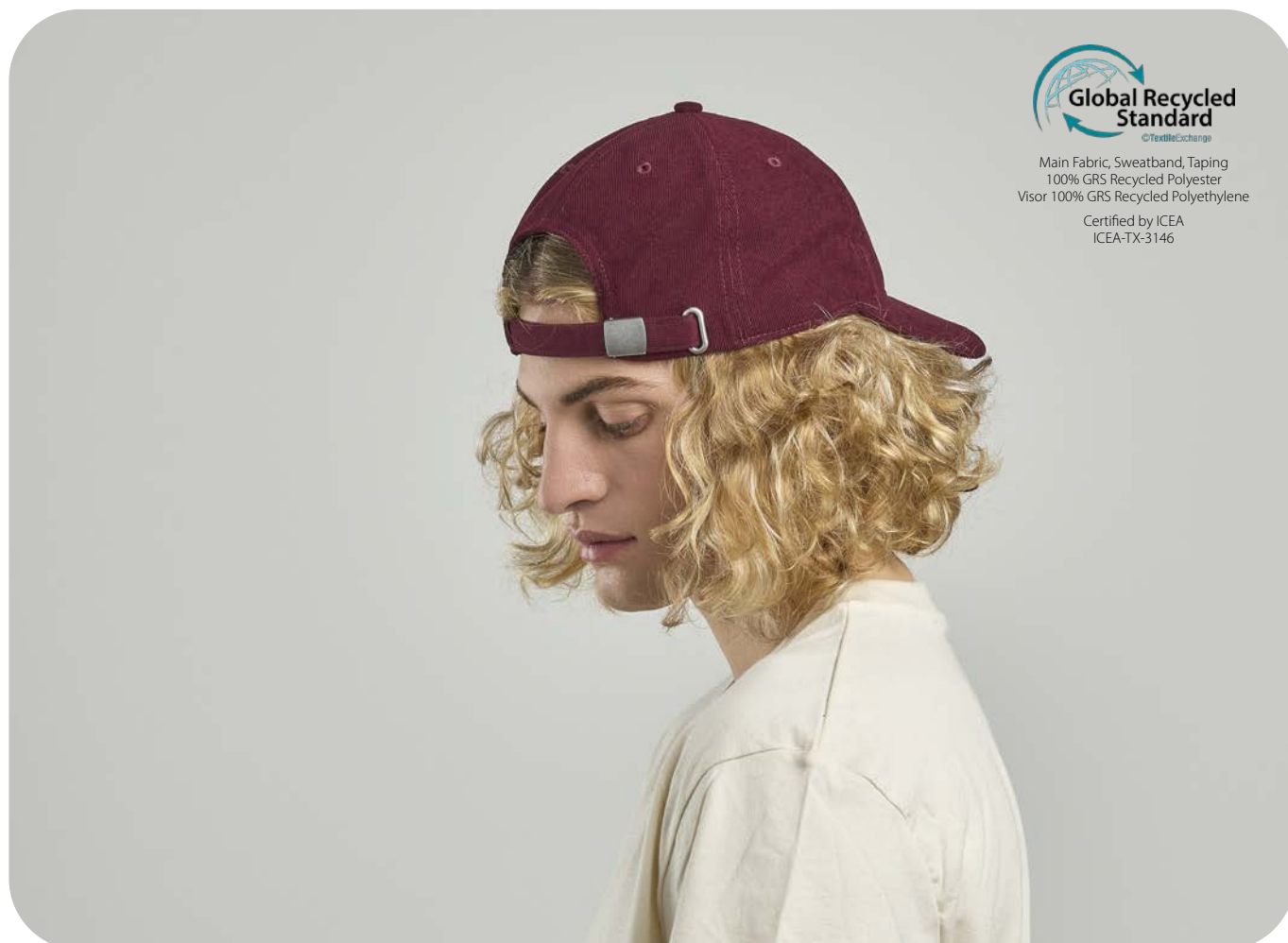
ONE SIZE · 215 GSM · FULL METAL BUCKLE WITH METAL HOLE

## FEATURES

MID VISOR · UNSTRUCTURED FRONT PANEL

## SUSTAINABLE FEATURES

R-PET SWEATBAND · RETRAZE® RECYCLED VISOR  
 IMPACT REDUCTION: -19% CO<sub>2</sub>eq\* · 0,534 kg CO<sub>2</sub> eq



Main Fabric, Sweatband, Taping  
 100% GRS Recycled Polyester  
 Visor 100% GRS Recycled Polyethylene  
 Certified by ICEA  
 ICEA-TX-3146



Taping 100% GRS Recycled Polyester  
Visor 100% GRS Recycled Polyethylene

Certified by ICEA  
ICEA-TX-3146



# Cruz

- Main Fabric: 80% organic cotton - 20% recycled cotton
- Texture: canvas



## TECH SPECS

ONE SIZE · 255 GSM · RECYCLED SNAPBACK CLOSURE

## FEATURES

FLAT VISOR · GARMENT WASHING · UNSTRUCTURED FRONT PANEL

## SUSTAINABLE FEATURES

RETRAZE® RECYCLED VISOR · SELF FABRIC SWEATBAND  
IMPACT REDUCTION: -23% CO<sub>2</sub>eq\* · 0,867 kg CO<sub>2</sub> eq

# Dad Hat-S

- Main Fabric: 80% organic cotton - 20% recycled cotton
- Texture: twill



TECH SPECS	ONE SIZE · 270 GSM · FULL METAL BUCKLE WITH METAL HOLE
FEATURES	MID VISOR · GARMENT WASHING · UNSTRUCTURED FRONT PANEL
SUSTAINABLE FEATURES	RETRAZE® RECYCLED VISOR · SELF FABRIC SWEATBAND IMPACT REDUCTION: -22% CO <sub>2</sub> eq* · 0,839 kg CO <sub>2</sub> eq



# Dad Hat Destroyed-S

- Main Fabric: 80% organic cotton - 20% recycled cotton
- Texture: twill



TECH SPECS	ONE SIZE · 270 GSM · FULL METAL BUCKLE WITH METAL HOLE
FEATURES	MID VISOR · GARMENT WASHING · UNSTRUCTURED FRONT PANEL
SUSTAINABLE FEATURES	RETRAZE® RECYCLED VISOR · SELF FABRIC SWEATBAND IMPACT REDUCTION: -22% CO <sub>2</sub> eq* · 0,893 kg CO <sub>2</sub> eq



Taping 100% GRS Recycled Polyester  
Visor 100% GRS Recycled Polyethylene  
Certified by ICEA  
ICEA-TX-3146

# Digg-S

- Main Fabric: 50% recycled cotton - 50% virgin cotton
- Texture: twill



BURGUNDY



KHAKI



MUSTARD



BLACK



NAVY



OLIVE

---

## TECH SPECS

ONE SIZE · 260 GSM · FULL METAL BUCKLE WITH METAL HOLE

---

## FEATURES

MID VISOR · UNSTRUCTURED FRONT PANEL · PIGMENT DYED FABRIC

---

## SUSTAINABLE FEATURES

RECYCLED VISOR · R-PET SWEATBAND

IMPACT REDUCTION: -18% CO<sub>2</sub>eq\* · 0,690 kg CO<sub>2</sub> eq



Main Fabric 50% GRS Recycled Cotton  
Sweatband, Taping  
100% GRS Recycled Polyester  
Visor 100% GRS Recycled Polyethylene

Certified by ICEA  
ICEA-TX-3146



Main Fabric 100% GRS Recycled Nylon  
 Mesh, Sweatband, Taping  
 100% GRS Recycled Polyester

Certified by ICEA  
 ICEA-TX-3146



# Erie

- **Front&Bill:** 100% recycled nylon
- **Side & Back:** 100% recycled polyester



WHITE



FUCSIA FLUO



YELLOW FLUO



DARK GREY



BLACK



NAVY



OLIVE



RED



STONE

## TECH SPECS

ONE SIZE · 120 GSM · RIBBON WITH PLASTIC CLOSURE

## FEATURES

FLAT VISOR · SOFT VISOR · WATER RESISTANT - PFC FREE  
 UNSTRUCTURED FRONT PANEL

## SUSTAINABLE FEATURES

RECYCLED DRY-TECH SWEATBAND · IMPACT REDUCTION: -20% CO<sub>2</sub>eq\*  
 0,389 kg CO<sub>2</sub> eq

# Estoril-S

- Main Fabric: 100% recycled polyester
- Texture: jacquard



TECH SPECS	ONE SIZE · 100 GSM · HIGH QUALITY HOOK&LOOP WITH PLASTIC LOOP
FEATURES	CURVED VISOR · HALF PIPING ON VISOR
SUSTAINABLE FEATURES	RECYCLED BUCKRAM · R-PET SWEATBAND · RETRAZE® RECYCLED VISOR IMPACT REDUCTION: -21% CO <sub>2</sub> eq* · 0,499 kg CO <sub>2</sub> eq



Main Fabric, Sweatband, Taping, Buckram  
 100% GRS Recycled Polyester  
 Visor 100% GRS Recycled Polyethylene  
 Certified by ICEA  
 ICEA-TX-3146

# Fam-S

- **Main Fabric:** 81% recycled polyester - 19% polyester
- **Underbill:** 100% recycled polyester
- **Texture:** suede



CARDINAL



GREY



BLACK



NAVY



STONE

---

**TECH SPECS**

ONE SIZE · 135 GSM · FULL METAL BUCKLE WITH METAL HOLE

---

**FEATURES**

MID VISOR

---

**SUSTAINABLE FEATURES**

RECYCLED BUCKRAM · R-PET SWEATBAND · RETRAZE® RECYCLED VISOR  
 IMPACT REDUCTION: -19% CO<sub>2</sub>eq\* · 0,527 kg CO<sub>2</sub> eq



Main Fabric 81% GRS Recycled Polyester  
 Underbill, Sweatband, Taping, Buckram  
 100% GRS Recycled Polyester  
 Visor 100% GRS Recycled Polyethylene

Certified by ICEA  
 ICEA-TX-3146



# Fiji

- Main Fabric: 100% recycled polyester
- Texture: twill



WHITE



DARK GREY



KHAKI



BLACK



NAVY



OLIVE



RED



ROYAL



BOTTLE GREEN



CARDINAL



GREY



BROWN

## TECH SPECS

ONE SIZE · 200 GSM · HOOK & LOOP CLOSURE

## FEATURES

CURVED VISOR

## SUSTAINABLE FEATURES

RECYCLED BUCKRAM · RETRAZE® RECYCLED VISOR  
 SELF FABRIC SWEATBAND · IMPACT REDUCTION: -22% CO<sub>2</sub>eq\*  
 0,552 kg CO<sub>2</sub> eq



Main Fabric, Taping, Buckram  
 100% GRS Recycled Polyester  
 Visor 100% GRS Recycled Polyethylene  
 Certified by ICEA  
 ICEA-TX-3146



95% GRS Recycled Polyester  
Certified by ICEA  
ICEA-TX-3146



# Flash-S

- Main Fabric: 95% recycled polyester - 5% elastane
- Texture: jersey



BLACK



NAVY

---

TECH SPECS

ONE SIZE · 200 G

---

FEATURES

STRETCHABLE FABRIC

---

SUSTAINABLE FEATURES

IMPACT REDUCTION: -25% CO<sub>2</sub>eq\* · 0,425 kg CO<sub>2</sub> eq

# Forever-S

- Main Fabric: 80% organic cotton - 20% recycled cotton
- Texture: twill



BLACK

NAVY

OLIVE

STONE

TECH SPECS	S/M - L/XL · 280 GSM
FEATURES	GARMENT WASHING
SUSTAINABLE FEATURES	SELF FABRIC SWEATBAND · IMPACT REDUCTION: -21% CO <sub>2</sub> eq* 1,330 kg CO <sub>2</sub> eq




**Global Recycled Standard**  
©TextileChange  
 Taping 100%  
 GRS Recycled Polyester  
 Certified by ICEA  
 ICEA-TX-3146

# Fraser

- Main Fabric: 100% organic cotton
- Texture: twill



TECH SPECS	ONE SIZE · 260 GSM · FULL METAL BUCKLE WITH METAL HOLE
FEATURES	MID VISOR · GARMENT WASHING · UNSTRUCTURED FRONT PANEL
SUSTAINABLE FEATURES	RETRAZE® RECYCLED VISOR · SELF FABRIC SWEATBAND IMPACT REDUCTION: -12% CO <sub>2</sub> eq* · 0,788 kg CO <sub>2</sub> eq



Organic  
Certified by ICEA  
GOTS-11099

# Freedom Basic-S

• Main Fabric: 100% recycled polyester



WHITE



BLACK



NAVY



RED



ROYAL

TECH SPECS

49x25 · 130 G

SUSTAINABLE FEATURES

REPREVE® · IMPACT REDUCTION: -18% CO<sub>2</sub>eq\* · 0,380 kg CO<sub>2</sub> eq





# Gatsby Street-S

- Main Fabric: 80% organic cotton - 20% recycled cotton
- Texture: canvas



KHAKI



BLACK



NAVY



OLIVE

---

## TECH SPECS

ONE SIZE · 260 GSM · FULLY CLOSED WITH BUCKLE

## FEATURES

MID VISOR · GARMENT WASHING

## SUSTAINABLE FEATURES

SELF FABRIC SWEATBAND · RECYCLED VISOR  
 IMPACT REDUCTION: -20 CO<sub>2</sub>eq\* · 1,050 kg CO<sub>2</sub> eq

# Gear-S

- **Main Fabric:** 100% recycled polyester
- **Front & Bill:** 95% recycled polyester - 5% elastane
- **Texture:** debossed



WHITE



BLACK



NAVY



RED

TECH SPECS	ONE SIZE · 230 GSM · HOOK & LOOP CLOSURE
FEATURES	CURVED VISOR
SUSTAINABLE FEATURES	RECYCLED BUCKRAM · R-PET SWEATBAND · RETRAZE® RECYCLED VISOR IMPACT REDUCTION: -15% CO <sub>2</sub> eq* · 0,600 kg CO <sub>2</sub> eq



Main Fabric, Sweatband, Taping, Buckram  
100% GRS Recycled Polyester  
Front and Bill 95% GRS Recycled Polyester  
Visor 100% GRS Recycled Polyethylene  
Certified by ICEA  
ICEA-TX- 3146

# Geo

- Main Fabric: 100% recycled polyester
- Texture: twill



WHITE



DARK GREY



KHAKI



BLACK



NAVY



OLIVE



TECH SPECS

ONE SIZE · 200 GSM

SUSTAINABLE FEATURES

SELF FABRIC SWEATBAND · IMPACT REDUCTION: -20% CO<sub>2</sub>eq\*  
0,607 kg CO<sub>2</sub> eq



100% GRS Recycled Polyester  
Certified by ICEA  
ICEA-TX-3146

# Ghibli

- **Main Fabric:** 100% recycled nylon
- **Lining:** 100% recycled polyester



DARK GREY - BLACK



NAVY - DARK GREY



BLACK - DARK GREY

---

## TECH SPECS

ONE SIZE · 120 GSM

---

## FEATURES

REVERSIBLE · WATER RESISTANT - PFC FREE

---

## SUSTAINABLE FEATURES

FULL R-PET FLEECE LINING · IMPACT REDUCTION: -46% CO<sub>2</sub>eq\*  
0,582 kg CO<sub>2</sub> eq



Main Fabric 100% GRS Recycled Nylon  
Lining, Taping 100% GRS Recycled Polyester

Certified by ICEA  
ICEA-TX-3146



# Globe Trotter-S

- Main Fabric: 80% organic cotton - 20% recycled cotton
- Texture: canvas



KHAKI



OLIVE

---

## TECH SPECS

S/M - L/XL · 260 GSM

## FEATURES

METAL EYELETS · GARMENT WASHING

## SUSTAINABLE FEATURES

SELF FABRIC SWEATBAND · IMPACT REDUCTION: -22% CO<sub>2</sub>eq\*  
1,860 kg CO<sub>2</sub> eq

# Helpy-S

- Main Fabric: 100% recycled polyester
- Texture: twill



ORANGE FLUO



YELLOW FLUO



NAVY

NEW

## TECH SPECS

ONE SIZE · 200 GSM · HOOK & LOOP CLOSURE REFLECT STRAP

## FEATURES

CURVED VISOR · WATER RESISTANT - PFC FREE · UPF 50+ PROTECTION  
REFLECTIVE BAND · CONTRAST COLOR UNDERBILL

## SUSTAINABLE FEATURES

RECYCLED BUCKRAM · RETRAZE® RECYCLED VISOR · R-PET SWEATBAND  
IMPACT REDUCTION: -21% CO<sub>2</sub>eq\* · 0,555 kg CO<sub>2</sub> eq



Main Fabric, Sweatband, Taping, Buckram  
100% GRS Recycled Polyester  
Visor 100% GRS Recycled Polyethylene

Certified by ICEA  
ICEA-TX-3146

# Hit-S

- Main Fabric: 80% organic cotton - 20% recycled cotton
- Texture: twill



TECH SPECS	ONE SIZE · 270 GSM · SUNDAY BUCKLE CLOSURE
FEATURES	CURVED VISOR
SUSTAINABLE FEATURES	RECYCLED BUCKRAM · RETRAZE® RECYCLED VISOR SELF FABRIC SWEATBAND · IMPACT REDUCTION: -22% CO <sub>2</sub> eq* 0,951 kg CO <sub>2</sub> eq



Taping, Buckram,  
100% GRS Recycled Polyester  
Visor 100% GRS Recycled Polyethylene  
Certified by ICEA  
ICEA-TX-3146

# Holly

• Main Fabric: 100% Polylana® polyester



ORANGE



LIGHT BLUE



BEIGE



BURGUNDY



LT GREY MELANGE



DK GREY



MUSTARD



BLACK



NAVY



OLIVE



RUSTY



ROYAL



ACID GREEN



BOTTLE GREEN

TECH SPECS

ONE SIZE · 58 G

SUSTAINABLE FEATURES

POLYLANA® · IMPACT REDUCTION: -55% CO<sub>2</sub>eq\* · 0,487 kg CO<sub>2</sub> eq





100% GRS Recycled Polyester  
Certified by ICEA  
ICEA-TX-3146



# Hotty-S

• Main Fabric: 100% recycled polyester



WHITE



DARK GREY



BLACK



NAVY



OLIVE



RED



ROYAL



TECH SPECS

28x25 CM · 230 GSM · ELASTIC STRING WITH PLASTIC STOPPER

FEATURES

COMPACT DESIGN

SUSTAINABLE FEATURES

IMPACT REDUCTION: -21% CO<sub>2</sub>eq\* · 0,438 kg CO<sub>2</sub> eq

# Isar

- Main Fabric: 100% recycled polyester
- Texture: jacquard



WHITE



GREY



DARK GREY



BLACK



NAVY



RED



ROYAL

---

## TECH SPECS

ONE SIZE · 100 GSM · HOOK & LOOP CLOSURE

---

## FEATURES

MID VISOR · UNSTRUCTURED FRONT PANEL

---

## SUSTAINABLE FEATURES

R-PET SWEATBAND · RETRAZE® RECYCLED VISOR  
 IMPACT REDUCTION: -20% CO<sub>2</sub>eq\* · 0,436 kg CO<sub>2</sub> eq



Main Fabric, Sweatband, Taping  
 100% GRS Recycled Polyester  
 Visor 100% GRS Recycled Polyethylene  
 Certified by ICEA  
 ICEA-TX-3146

# James

- Main Fabric: 100% recycled polyester
- Texture: twill



WHITE



DARK GREY



BLACK



NAVY



OLIVE



ROYAL

---

## TECH SPECS

ONE SIZE · 200 GSM · RECYCLED SNAPBACK CLOSURE

---

## FEATURES

FLAT VISOR

---

## SUSTAINABLE FEATURES

RECYCLED BUCKRAM · RETRAZE® RECYCLED VISOR  
SELF FABRIC SWEATBAND · IMPACT REDUCTION: -21% CO<sub>2</sub>eq\*  
0,587 kg CO<sub>2</sub> eq



Main Fabric, Taping, Buckram  
100% GRS Recycled Polyester  
Visor 100% GRS Recycled Polyethylene  
Certified by ICEA  
ICEA-TX-3146

# Joshua

- Main Fabric: 100% recycled polyester
- Texture: twill




---

## TECH SPECS

ONE SIZE · 200 GSM · HOOK & LOOP CLOSURE

---

## FEATURES

CURVED VISOR

---

## SUSTAINABLE FEATURES

RECYCLED BUCKRAM · RETRAZE® RECYCLED VISOR  
 SELF FABRIC SWEATBAND · IMPACT REDUCTION: -21% CO<sub>2</sub>eq\*  
 0,542 kg CO<sub>2</sub> eq



Main Fabric, Taping, Buckram  
 100% GRS Recycled Polyester  
 Visor 100% GRS Recycled Polyethylene  
 Certified by ICEA  
 ICEA-TX-3146



Main Fabric 97% GRS Recycled Polyester  
 Sweatband, Taping, Buckram  
 100% GRS Recycled Polyester  
 Visor 100% GRS Recycled Polyethylene

Certified by ICEA  
 ICEA-TX-3146



# Kai

• Main Fabric: 97% recycled polyester - 3% elastane



WHITE



DARK GREY



BLACK



NAVY



SAGE

## TECH SPECS

ONE SIZE · 195 GSM · HOOK&LOOP CLOSURE PLASTIC LOOP ELASTIC STRING

## FEATURES

MID VISOR · UPF50+ · SOFT CROWN · WATER RESISTANT - PFC FREE  
 UNSTRUCTURED FRONT PANEL

## SUSTAINABLE FEATURES

RETRAZE® RECYCLED VISOR · RECYCLED DRY-TECH SWEATBAND  
 IMPACT REDUCTION: -19% CO<sub>2</sub>eq\* · 0,543 kg CO<sub>2</sub> eq

# Kid Fraser

- Main Fabric: 100% organic cotton
- Texture: twill



COLUMBIA BLUE



KHAKI



BLACK



NAVY



RED



PINK



ROYAL

TECH SPECS

KIDS SIZE · 260 GSM · HOOK & LOOP CLOSURE

FEATURES

MID VISOR · GARMENT WASHING · UNSTRUCTURED FRONT PANEL

SUSTAINABLE FEATURES

SELF FABRIC SWEATBAND · IMPACT REDUCTION: -12% CO<sub>2</sub>eq\*  
0,703 kg CO<sub>2</sub> eq



Organic  
Certified by ICEA  
GOTS-11099

# Kid Mayo

- Main Fabric: 80% organic cotton - 20% recycled cotton
- Texture: twill



WHITE



COLUMBIA BLUE



BLACK



NAVY



RED



PINK



STONE

---

TECH SPECS

KIDS SIZE · 270 GSM

---

SUSTAINABLE FEATURES

SELF FABRIC SWEATBAND · IMPACT REDUCTION: -20% CO<sub>2</sub>eq\*  
1,130 kg CO<sub>2</sub> eq



# Kid Nomad-S

- Main Fabric: 100% recycled polyester
- Texture: microfiber



KHAKI



OLIVE

TECH SPECS

KIDS SIZE · 120 GSM · FULLY CLOSED WITH RECYCLED CLAMP

FEATURES

CURVED VISOR · UPF50+ · UNSTRUCTURED FRONT PANEL

SUSTAINABLE FEATURES

RETRAZE® RECYCLED VISOR · SELF FABRIC SWEATBAND  
 IMPACT REDUCTION: -19% CO<sub>2</sub>eq\* · 0,403 kg CO<sub>2</sub> eq



Main Fabric, Taping  
 100% GRS Recycled Polyester  
 Visor 100% GRS Recycled Polyethylene  
 Certified by ICEA  
 ICEA-TX-3146



Main Fabric, Mesh, Sweatband, Taping  
 100% GRS Recycled Polyester  
 Visor 100% GRS Recycled Polyethylene  
 Certified by ICEA  
 ICEA-TX- 3146



# Kid Rapper-S

- Main Fabric: 100% recycled polyester
- Side & Back: 100% recycled polyester
- Texture: piqué



WHITE - YELLOW



WHITE - BLACK



WHITE - NAVY



WHITE - RED



WHITE - ROYAL



WHITE - GREEN



WHITE - ORANGE FLUO

NEW



NEW

WHITE - FUCHSIA FLUO

## TECH SPECS

KIDS SIZE · 180 GSM · RECYCLED SNAPBACK CLOSURE

## FEATURES

CURVED VISOR · PADDED FRONT PANEL

## SUSTAINABLE FEATURES

R-PET SWEATBAND · RETRAZE® RECYCLED VISOR  
 IMPACT REDUCTION: -17% CO<sub>2</sub>eq\* · 0,445 kg CO<sub>2</sub> eq

# Kid Recy Five

- Main Fabric: 100% recycled polyester
- Texture: twill



LIGHT BLUE



WHITE



YELLOW



BLACK



NAVY



RED



PINK



ROYAL

TECH SPECS

KIDS SIZE · 220 GSM · HOOK & LOOP CLOSURE

FEATURES

CURVED VISOR

SUSTAINABLE FEATURES

IMPACT REDUCTION: -11% CO<sub>2</sub>eq\* · 0,398 kg CO<sub>2</sub> eq



# Kid Snap Back-S

- Main Fabric: 100% recycled polyester
- Texture: twill



BLACK

NAVY

RED

ROYAL

---

## TECH SPECS

KIDS SIZE · 300 GSM · RECYCLED SNAPBACK CLOSURE

---

## FEATURES

FLAT VISOR

---

## SUSTAINABLE FEATURES

RECYCLED BUCKRAM · R-PET SWEATBAND · RETRAZE® RECYCLED VISOR  
IMPACT REDUCTION: -22% CO<sub>2</sub>eq\* · 0,629 kg CO<sub>2</sub> eq



Main Fabric, Sweatband, Taping, Buckram  
100% GRS Recycled Polyester  
Visor 100% GRS Recycled Polyethylene  
Certified by ICEA  
ICEA-TX-3146



# Kid Star-S

- Main Fabric: 100% organic cotton
- Texture: twill



WHITE-RED



COLUMBIA BLUE-NAVY



RED-NAVY



ROYAL-WHITE



PINK-WHITE



NAVY-COLUMBIA BLUE

TECH SPECS

KIDS SIZE · 260 GSM · HOOK & LOOP CLOSURE

FEATURES

CURVED VISOR

SUSTAINABLE FEATURES

RECYCLED BUCKRAM · RETRAZE® RECYCLED VISOR  
 SELF FABRIC SWEATBAND · IMPACT REDUCTION: -14% CO<sub>2</sub>eq\*  
 0,766 kg CO<sub>2</sub> eq



Organic  
 Certified by ICEA  
 GOTS-11099



100% GRS Recycled Polyester  
Certified by ICEA  
ICEA-TX-3146



STANDARD  
100  
SH020 220679  
TESTEX



# Kid Wind-S

• Main Fabric: 100% recycled polyester



LIGHT BLUE



BLACK



NAVY



RED



PINK



ROYAL



BEIGE

NEW



WHITE

NEW



FUCHSIA

NEW

TECH SPECS

KIDS SIZE · 58 G

SUSTAINABLE FEATURES

IMPACT REDUCTION: -21% CO<sub>2</sub>eq\* · 0,510 kg CO<sub>2</sub> eq

# Kid Yala

• Main Fabric: 100% organic cotton



LIGHT AVIO



NAVY



RED



PINK



ROYAL



LEAF GREEN



TECH SPECS

KIDS SIZE · 50 G

SUSTAINABLE FEATURES

IMPACT REDUCTION: -9% CO<sub>2</sub>eq\* · 0,690 kg CO<sub>2</sub> eq



Organic  
Certified by ICEA  
GOTS-11099

# Liberty Sandwich-S

- Main Fabric: 80% organic cotton - 20% recycled cotton
- Texture: twill



TECH SPECS	ONE SIZE · 270 GSM · SNAP BUCKLE WITH SEWN HOLE
FEATURES	CURVED VISOR · SANDWICH ON VISOR · BRUSHED
SUSTAINABLE FEATURES	RECYCLED BUCKRAM · R-PET SWEATBAND · RETRAZE® RECYCLED VISOR IMPACT REDUCTION: -22% CO <sub>2</sub> eq* · 0,759 kg CO <sub>2</sub> eq



# Maple

• Main Fabric: 100% Polylana® polyester



BETIGE



BURGUNDY



LT GREY MELANGE



DK GREY



MUSTARD



BLACK



NAVY



OLIVE



ROYAL

TECH SPECS

ONE SIZE · 80 G

SUSTAINABLE FEATURES

IMPACT REDUCTION: -56% CO<sub>2</sub>eq\* · 0,648 kg CO<sub>2</sub> eq

**POLYLANA**®





Sweatband, Buckram  
100% GRS Recycled Polyester  
Visor 100% GRS Recycled Polyethylene

Certified by ICEA  
ICEA-TX-3146



# Maui

- **Main Fabric:** 100% textile-to-textile recycled polyester
- **Texture:** microfiber



WHITE



DARK GREY



BLACK



NAVY

---

## TECH SPECS

ONE SIZE · 105 GSM · HOOK&LOOP WITH PLASTIC LOOP ELASTIC STRING

## FEATURES

MID VISOR · MOISTURE-WICKING · LASER HOLES  
UNSTRUCTURED FRONT PANEL

---

## SUSTAINABLE FEATURES

RETRAZE® RECYCLED VISOR · RECYCLED DRY-TECH SWEATBAND  
IMPACT REDUCTION: -19% CO<sub>2</sub>eq\* · 0,415 kg CO<sub>2</sub> eq

# Moover-S

• Main Fabric: 100% recycled polyester



ROYAL



RED



OLIVE



NAVY



BLACK



DARK GREY

TECH SPECS

ONE SIZE · 60 G

SUSTAINABLE FEATURES

IMPACT REDUCTION: -30% CO<sub>2</sub>eq\* · 0,335 kg CO<sub>2</sub> eq



100% GRS Recycled Polyester  
Certified by ICEA  
ICEA-TX-3146



STANDARD  
100  
SH020 220679  
TESTEX

# Nelson

• Main Fabric: 100% organic cotton



LIGHT AVIO



BURGUNDY



LIGHT GREY



BLACK



NAVY



LEAF GREEN



TECH SPECS

ONE SIZE · 78 G

SUSTAINABLE FEATURES

IMPACT REDUCTION: -9% CO<sub>2</sub>eq\* · 0,932 kg CO<sub>2</sub> eq



Organic  
Certified by ICEA  
GOTS-11099

# Nomad-S

- Main Fabric: 100% recycled polyester
- Texture: microfiber



KHAKI



OLIVE

---

## TECH SPECS

ONE SIZE · 120 GSM · FULLY CLOSED WITH RECYCLED CLAMP

---

## FEATURES

CURVED VISOR · UPF50+ · UNSTRUCTURED FRONT PANEL

---

## SUSTAINABLE FEATURES

RETRAZE® RECYCLED VISOR · SELF FABRIC SWEATBAND  
IMPACT REDUCTION: -20% CO<sub>2</sub>eq\* · 0,459 kg CO<sub>2</sub> eq



Main Fabric, Taping  
100% GRS Recycled Polyester  
Visor 100% GRS Recycled Polyethylene  
Certified by ICEA  
ICEA-TX-3146



# Oak

• Main Fabric: 100% Polylana® polyester



LIGHT BLUE



ACID GREEN



BURGUNDY



LT GREY MELANGE



DK GREY



MUSTARD



BLACK



NAVY



OLIVE



RUSTY

TECH SPECS

ONE SIZE · 102 G

SUSTAINABLE FEATURES

IMPACT REDUCTION: -56% CO<sub>2</sub>eq\* · 0,804 kg CO<sub>2</sub> eq

# Pico

• Main Fabric: 100% recycled nylon



DARK GREY



BLACK



NAVY



OLIVE

---

## TECH SPECS

ONE SIZE · 120 GSM · ADJUSTABLE STRING WITH STOPPER

---

## FEATURES

SOFT CROWN · COMPACT DESIGN · WATER RESISTANT - PFC FREE

---

## SUSTAINABLE FEATURES

RECYCLED DRY-TECH SWEATBAND · IMPACT REDUCTION: -47% CO<sub>2</sub>eq\*  
0,470 kg CO<sub>2</sub> eq



Main Fabric 100% GRS Recycled Nylon  
Sweatband, Taping  
100% GRS Recycled Polyester  
Certified by ICEA  
ICEA-TX-3146

# Pier-S

- **Main Fabric:** 100% recycled polyester
- **Lining:** 100% recycled polyester



DARK GREY



BLACK



NAVY



ORANGE FLUO



YELLOW FLUO

---

## TECH SPECS

ONE SIZE · 85 G

---

## SUSTAINABLE FEATURES

FULL LINING IN RECYCLED FLEECE · POLARTEC®  
IMPACT REDUCTION: -23% CO<sub>2</sub>eq\* · 0,699 kg CO<sub>2</sub> eq



100% GRS Recycled Polyester  
Certified by ICEA  
ICEA-TX- 3146

# Pilot-S

- Main Fabric: 80% organic cotton - 20% recycled cotton
- Texture: twill



KHAKI

BLACK

NAVY

OLIVE

RED

ROYAL

---

## TECH SPECS

ONE SIZE · 355 GSM · FULL METAL BUCKLE WITH SEWN HOLE

---

## FEATURES

CURVED VISOR · HEAVY BRUSHED

---

## SUSTAINABLE FEATURES

RECYCLED BUCKRAM · R-PET SWEATBAND · RETRAZE® RECYCLED VISOR  
 IMPACT REDUCTION: -22% CO<sub>2</sub>eq\* · 0,932 kg CO<sub>2</sub> eq



Sweatband, Taping, Buckram  
 100% GRS Recycled Polyester  
 Visor 100% GRS Recycled Polyethylene  
 Certified by ICEA  
 ICEA-TX-3146



Sweatband, Taping, Buckram  
100% GRS Recycled Polyester  
Visor 100% GRS Recycled Polyethylene

Certified by ICEA  
ICEA-TX-3146



# Pilot Piping Sandwich-S

- Main Fabric: 80% organic cotton - 20% recycled cotton
- Texture: twill



KHAKI



BLACK



NAVY



OLIVE



RED



ROYAL

## TECH SPECS

ONE SIZE · 355 GSM · FULL METAL BUCKLE WITH METAL HOLE

## FEATURES

CURVED VISOR · PIPING ON VISOR AND ON BACK · HEAVY BRUSHED  
CONTRAST COLOR UNDERBILL

## SUSTAINABLE FEATURES

RECYCLED BUCKRAM · R-PET SWEATBAND · RETRAZE® RECYCLED VISOR  
IMPACT REDUCTION: -20% CO<sub>2</sub>eq\* · 0,938 kg CO<sub>2</sub> eq

# Pitch

- Main Fabric: 100% recycled polyester
- Texture: microtwill



DARK GREY



BLACK



NAVY

TECH SPECS

S/M - L/XL · 200 GSM · FULLY CLOSED ON BACK

FEATURES

MID VISOR · STRETCHABLE FABRIC

SUSTAINABLE FEATURES

RETRAZE® RECYCLED VISOR · RECYCLED BUCKRAM  
 RECYCLED ELASTIC SWEATBAND · IMPACT REDUCTION: -22% CO<sub>2</sub>eq\*  
 0,507 kg CO<sub>2</sub> eq



Main Fabric, Taping, Buckram  
 100% GRS Recycled Polyester  
 Sweatband 91% GRS Recycled Polyester  
 Visor 100% GRS Recycled Polyethylene  
 Certified by ICEA  
 ICEA-TX- 3146

# Powell

- Main Fabric: 50% recycled cotton - 50% virgin cotton
- Texture: twill



WHITE



DARK GREY



KHAKI



BLACK



NAVY



OLIVE

TECH SPECS

ONE SIZE · 260 GSM

SUSTAINABLE FEATURES

SELF FABRIC SWEATBAND · IMPACT REDUCTION: -18% CO<sub>2</sub>eq\*  
0,842 kg CO<sub>2</sub> eq



50% GRS Recycled Cotton

Certified by ICEA  
ICEA-TX-3146

# Pure

• Main Fabric: 100% Polylana® polyester



ORANGE



LIGHT BLUE



BEIGE



BURGUNDY



LT GREY MELANGE



DK GREY



MUSTARD



BLACK



NAVY



OLIVE



RUSTY



ROYAL



ACID GREEN



BOTTLE GREEN

TECH SPECS

ONE SIZE · 90 G

SUSTAINABLE FEATURES

IMPACT REDUCTION: -55% CO<sub>2</sub>eq\* · 0,731 kg CO<sub>2</sub> eq

**POLYLANA**<sup>®</sup>





Main Fabric, Lining, Sweatband, Taping  
100% GRS Recycled Polyester  
Visor 100% GRS Recycled Polyethylene

Certified by ICEA  
ICEA-TX-3146



# Rainy-S

- **Main Fabric:** 100% recycled polyester
- **Lining:** 100% recycled polyester
- **Texture:** ripstop



GREY



BLACK



NAVY



DARK MUSTARD

---

## TECH SPECS

ONE SIZE · 85 GSM · SUNDAY BUCKLE

---

## FEATURES

CURVED VISOR · HOT SEALED TAPING · WATER RESISTANT - PFC FREE  
UNSTRUCTURED FRONT PANEL

---

## SUSTAINABLE FEATURES

RETRAZE® RECYCLED VISOR · R-PET MESH LINING  
RECYCLED DRY-TECH SWEATBAND IMPACT REDUCTION: -20% CO<sub>2</sub>eq\*  
0,445 kg CO<sub>2</sub> eq

# Rapper-S

- Front & Bill: 100% recycled polyester
- Side & Back: 100% recycled polyester
- Texture: piqué



TECH SPECS	ONE SIZE · 180 GSM · RECYCLED SNAPBACK CLOSURE
FEATURES	MID VISOR · PADDED FRONT PANEL
SUSTAINABLE FEATURES	R-PET SWEATBAND · RETRAZE® RECYCLED VISOR IMPACT REDUCTION: -18% CO <sub>2</sub> eq* · 0,471 kg CO <sub>2</sub> eq



Main Fabric, Mesh, Sweatband, Taping  
100% GRS Recycled Polyester  
Visor 100% GRS Recycled Polyethylene  
Certified by ICEA  
ICEA-TX- 3146

# Rapper Canvas-S

- Main Fabric: 100% recycled polyester
- Side&back: 100% recycled polyester
- Texture: canvas



GREY-NAVY



GREY-BLACK



NAVY-BURGUNDY-KHAKI



OLIVE-KHAKI



NAVY-DARK GREY



BLACK-GREY



WHITE-BURGUNDY-BLACK



NAVY-YELLOW



GREY-YELLOW-BLACK



BOTTLE GREEN-YELLOW



ROYAL-GREY



WHITE-YELLOW-DK GREY



NAVY-BURGUNDY



DK GREY-BURGUNDY



BLACK-BLACK



BOTTLE GREEN-WHITE

## TECH SPECS

ONE SIZE · 270 GSM · RECYCLED SNAPBACK CLOSURE

## FEATURES

MID VISOR

## SUSTAINABLE FEATURES

RECYCLED BUCKRAM · RETRAZE® RECYCLED VISOR  
 SELF FABRIC SWEATBAND · IMPACT REDUCTION: -21% CO<sub>2</sub>eq\*  
 0,558 kg CO<sub>2</sub> eq



Main Fabric, Mesh, Taping, Buckram  
 100% GRS Recycled Polyester  
 Visor 100% GRS Recycled Polyethylene

Certified by ICEA  
 ICEA-TX-3146

# Rapper Cotton-S

- Main Fabric: 80% organic cotton - 20% recycled cotton
- Side & Back: 100% recycled polyester
- Texture: twill



## TECH SPECS

ONE SIZE · 270 GSM · RECYCLED SNAPBACK CLOSURE

## FEATURES

CURVED VISOR

## SUSTAINABLE FEATURES

RECYCLED BUCKRAM · RECYCLED POLYESTER SWEATBAND ·  
 RETRAZE® RECYCLED VISOR · IMPACT REDUCTION: -22% CO<sub>2</sub>eq\*  
 0,615 kg CO<sub>2</sub> eq



Mesh, Sweatband, Taping, Buckram  
 100% GRS Recycled Polyester  
 Visor 100% GRS Recycled Polyethylene

Certified by ICEA  
 ICEA-TX-3146



Main Fabric 81% GRS Recycled Polyester  
Underbill, Mesh, Sweatband, Taping, Buckram  
100% GRS Recycled Polyester  
Visor 100% GRS Recycled Polyethylene

Certified by ICEA  
ICEA-TX-3146



# Rapper Suede-S

- **Main Fabric:** 81% recycled polyester - 19% polyester
- **Side & Back:** 100% recycled polyester
- **Underbill:** 100% recycled polyester
- **Texture:** suede



CARDINAL



GREY



BLACK



NAVY



STONE

TECH SPECS

ONE SIZE · 135 GSM · RECYCLED SNAPBACK CLOSURE

FEATURES

MID VISOR

SUSTAINABLE FEATURES

RECYCLED BUCKRAM · R-PET SWEATBAND · RETRAZE® RECYCLED VISOR  
IMPACT REDUCTION: -20% CO<sub>2</sub>eq\* · 0,486 kg CO<sub>2</sub> eq

# Ray-S

- Main Fabric: 100% recycled polyester
- Texture: microtwill



WHITE

DARK GREY

BLACK

NAVY

RED

ROYAL

---

## TECH SPECS

ONE SIZE · 106 GSM · RECYCLED RUBBER HOOK & LOOP CLOSURE

---

## FEATURES

MID VISOR · UPF50+ · WATER RESISTANT - PFC FREE

---

## SUSTAINABLE FEATURES

RECYCLED BUCKRAM · RETRAZE® RECYCLED VISOR  
 RECYCLED DRY-TECH SWEATBAND · IMPACT REDUCTION: -20% CO<sub>2</sub>eq\*  
 0,534 kg CO<sub>2</sub> eq



Main Fabric, Sweatband, Taping, Buckram  
 100% GRS Recycled Polyester  
 Visor 100% GRS Recycled Polyethylene  
 Certified by ICEA  
 ICEA-TX-3146

# Record-S

- Front & Bill: 100% recycled polyester
- Side & Back: 100% recycled polyester
- Texture: twill



CARDINAL



DARK GREY



KHAKI



BLACK



NAVY



OLIVE



RED



ROYAL

---

## TECH SPECS

ONE SIZE · 200 GSM · RECYCLED SNAPBACK CLOSURE

---

## FEATURES

MID VISOR · PADDED FRONT PANEL

---

## SUSTAINABLE FEATURES

RETRAZE® RECYCLED VISOR · SELF FABRIC SWEATBAND  
 IMPACT REDUCTION: -19% CO<sub>2</sub>eq\* · 0,542 kg CO<sub>2</sub> eq



Main Fabric, Mesh, Sweatband, Taping  
 100% GRS Recycled Polyester  
 Visor 100% GRS Recycled Polyethylene  
 Certified by ICEA  
 ICEA-TX-3146



# Recy Beanie

• Main Fabric: 50% recycled polyester - 50% acrylic



DK GREY MELANGE



MUSTARD



BLACK



NAVY



ROYAL



BOTTLE GREEN

---

TECH SPECS

ONE SIZE · 48 G

---

SUSTAINABLE FEATURES

IMPACT REDUCTION: -26% CO<sub>2</sub>eq\* · 0,674 kg CO<sub>2</sub> eq





Main Fabric, Sweatband, Taping, Buckram  
100% GRS Recycled Polyester  
Visor 100% GRS Recycled Polyethylene

Certified by ICEA  
ICEA-TX-3146



# Recy Feel

- Main Fabric: 100% recycled polyester
- Texture: microfiber



WHITE



GREEN FLUO



BLACK



NAVY



ROYAL



---

## TECH SPECS

ONE SIZE · 115 GSM · RECYCLED SNAPBACK CLOSURE

---

## FEATURES

MID VISOR

---

## SUSTAINABLE FEATURES

RECYCLED DRY-TECH SWEATBAND · RETRAZE® RECYCLED VISOR  
IMPACT REDUCTION: -20% CO<sub>2</sub>eq\* · 0,457 kg CO<sub>2</sub> eq

# Recy Five

- Main Fabric: 100% recycled polyester
- Texture: twill



LIGHT BLUE



WHITE



YELLOW



GREY



BLACK



NAVY



RED



ROYAL



GREEN



ORANGE



WHITE - NAVY



BURGUNDY



KHAKI



BROWN



OLIVE



PINK



BOTTLE GREEN

---

TECH SPECS

ONE SIZE · 220 GSM · HOOK & LOOP CLOSURE

---

FEATURES

CURVED VISOR

---

SUSTAINABLE FEATURES

IMPACT REDUCTION: -12% CO<sub>2</sub>eq\* · 0,479 kg CO<sub>2</sub> eq



# Recy Five Italia

- Main Fabric: 100% recycled polyester
- Texture: twill



WHITE



BLACK



NAVY



RED



ROYAL

---

## TECH SPECS

ONE SIZE · 220 GSM · HOOK & LOOP CLOSURE

---

## FEATURES

CURVED VISOR · HALF PIPING ON VISOR

---

## SUSTAINABLE FEATURES

IMPACT REDUCTION: -12% CO<sub>2</sub>eq\* · 0,479 kg CO<sub>2</sub> eq



# Recy Five Piping

- Main Fabric: 100% recycled polyester
- Construction: twill



ORANGE-WHITE



LIGHT BLUE-WHITE



WHITE-NAVY



BURGUNDY-WHITE



YELLOW-WHITE



GREY-WHITE



KHAKI-NAVY



BLACK-WHITE



NAVY-WHITE



RED-WHITE



PINK-WHITE



ROYAL-WHITE



GREEN-WHITE

---

## TECH SPECS

ONE SIZE · 220 GSM · HOOK & LOOP CLOSURE

---

## FEATURES

CURVED VISOR · PIPING ON VISOR

---

## SUSTAINABLE FEATURES

IMPACT REDUCTION: -12% CO<sub>2</sub>eq\* · 0,465 kg CO<sub>2</sub> eq





# Recy Six

- Main Fabric: 100% recycled polyester
- Construction: twill



WHITE



BLACK



NAVY



RED



ROYAL



KHAKI



OLIVE

TECH SPECS

ONE SIZE · 220 GSM · HOOK & LOOP CLOSURE

FEATURES

CURVED VISOR

SUSTAINABLE FEATURES

IMPACT REDUCTION: -12% CO<sub>2</sub>eq\* · 0,477 kg CO<sub>2</sub> eq

# Recy Three

- Main Fabric: 50% recycled cotton - 50% virgin cotton
- Texture: canvas



WHITE-WHITE



DARK GREY-BLACK



BLACK-BLACK



OLIVE-BLACK



RED-WHITE



ROYAL-BLACK

---

## TECH SPECS

ONE SIZE · 260 GSM · RECYCLED SNAPBACK CLOSURE

---

## FEATURES

MID VISOR

---

## SUSTAINABLE FEATURES

RECYCLED BUCKRAM · RETRAZE® RECYCLED VISOR  
 SELF FABRIC SWEATBAND · IMPACT REDUCTION: -20% CO<sub>2</sub>eq\*  
 0,617 kg CO<sub>2</sub> eq



Main Fabric 50% GRS Recycled Cotton  
 Mesh, Taping, Buckram  
 100% GRS Recycled Polyester  
 Visor 100% GRS Recycled Polyethylene

Certified by ICEA  
 ICEA-TX-3146

# Reflect-S

- Main Fabric: 100% recycled polyester
- Texture: twill



BLACK

NAVY

RED

ROYAL

---

## TECH SPECS

ONE SIZE · 200 GSM · SNAP BUCKLE WITH SEWN HOLE

---

## FEATURES

CURVED VISOR · WATER RESISTANT - PFC FREE · REFLECTIVE PIPING

---

## SUSTAINABLE FEATURES

RETRAZE® RECYCLED VISOR · RECYCLED BUCKRAM  
 SELF FABRIC SWEATBAND · IMPACT REDUCTION: -21% CO<sub>2</sub>eq\*  
 0,566 kg CO<sub>2</sub> eq



Main Fabric, Taping, Buckram  
 100% GRS Recycled Polyester  
 Visor 100% GRS Recycled Polyethylene  
 Certified by ICEA  
 ICEA-TX-3146

# Rio

• Main Fabric: 100% recycled polyester



LIGHT BLUE



BEIGE



BURGUNDY



LIGHT GREY



DARK GREY



MUSTARD



BLACK



NAVY



OLIVE



ACID GREEN



BOTTLE GREEN

TECH SPECS

ONE SIZE · 63 G

SUSTAINABLE FEATURES

IMPACT REDUCTION: -22% CO<sub>2</sub>eq\* · 0,552 kg CO<sub>2</sub> eq



100% GRS Recycled Polyester  
Certified by ICEA  
ICEA-TX-3146



STANDARD  
100  
SH020 220679  
TESTEX





Main Fabric 97% GRS Recycled Polyester  
 Sweatband 91% GRS Recycled Polyester  
 Taping, Buckram 100% GRS Recycled Polyester  
 Visor 100% GRS Recycled Polyethylene

Certified by ICEA  
 ICEA-TX-3146



# Sand

- **Main Fabric:** 97% recycled polyester - 3% elastane
- **Texture:** miniottoman



WHITE



DARK GREY



NAVY



ROYAL



BLACK

## TECH SPECS

ONE SIZE · 290 GSM · HOOK&LOOP CLOSURE PLASTIC LOOP ELASTIC STRING

## FEATURES

MID VISOR

## SUSTAINABLE FEATURES

RETRAZE® RECYCLED VISOR · RECYCLED BUCKRAM  
 RECYCLED ELASTIC SWEATBAND · IMPACT REDUCTION: -20% CO<sub>2</sub>eq\*  
 0,649 kg CO<sub>2</sub> eq

# Shine

• Main Fabric: 100% recycled polyester



DARK GREY



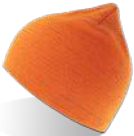
BLACK



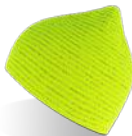
NAVY



OLIVE



ORANGE FLUO



YELLOW FLUO

---

TECH SPECS

ONE SIZE · 76 G

---

FEATURES

REFLECTIVE YARN

---

SUSTAINABLE FEATURES

IMPACT REDUCTION: -22% CO<sub>2</sub>eq\* · 0,637 kg CO<sub>2</sub> eq



100% GRS Recycled Polyester

Certified by ICEA  
ICEA-TX-3146

# Shore

• Main Fabric: 100% recycled polyester



BERGE



BURGUNDY



LT GREY



DK GREY



MUSTARD



BLACK



NAVY



OLIVE



RUSTY



BOTTLE GREEN

TECH SPECS

ONE SIZE · 80 G

SUSTAINABLE FEATURES

IMPACT REDUCTION: -22% CO<sub>2</sub>eq\* · 0,625 kg CO<sub>2</sub> eq



100% GRS Recycled Polyester  
Certified by ICEA  
ICEA-TX-3146



STANDARD  
100  
SH020 220679  
TESTEX



Taping, Buckram,  
100% GRS Recycled Polyester  
Visor 100% GRS Recycled Polyethylene  
Certified by ICEA  
ICEA-TX-3146



# Shot-S

- Main Fabric: 80% organic cotton - 20% recycled cotton
- Texture: twill



ORANGE



WHITE



BURGUNDY



YELLOW



LIGHT GREY



DARK GREY



KHAKI



BROWN



BLACK



NAVY



OLIVE



RED



PINK



ROYAL



STONE



GREEN



PURPLE

---

## TECH SPECS

ONE SIZE · 270 GSM · SUNDAY BUCKLE CLOSURE

---

## FEATURES

CURVED VISOR

---

## SUSTAINABLE FEATURES

RECYCLED BUCKRAM · SELF FABRIC SWEATBAND  
RETRAZE® RECYCLED VISOR · IMPACT REDUCTION: -20% CO<sub>2</sub>eq\*  
0,962 kg CO<sub>2</sub> eq

# Skye

- Main Fabric: 93% recycled polyester - 7% polyester
- Texture: honeycomb



COCONUT MILK



DARK GREY



BLACK



ROYAL

---

## TECH SPECS

ONE SIZE · 255 GSM · HIGH QUALITY HOOK & LOOP CLOSURE

---

## FEATURES

MID VISOR

---

## SUSTAINABLE FEATURES

RETRAZE® RECYCLED VISOR · DOPE DYEING  
RECYCLED DRY-TECH SWEATBAND · RECYCLED BUCKRAM  
IMPACT REDUCTION: -21% CO<sub>2</sub>eq\* · 0,598 kg CO<sub>2</sub> eq



Main Fabric 93% GRS Recycled Polyester  
Sweatband, Taping, Buckram  
100% GRS Recycled Polyester  
Visor 100% GRS Recycled Polyethylene

Certified by ICEA  
ICEA-TX-3146

# Snap Back-S

- Main Fabric: 100% recycled polyester
- Texture: twill



WHITE



CARDINAL



GREY



DARK GREY



BLACK



NAVY



RED



ROYAL



BOTTLE GREEN



BLACK - GREY



BLACK - RED



CAMOUFLAGE-BLACK

## TECH SPECS

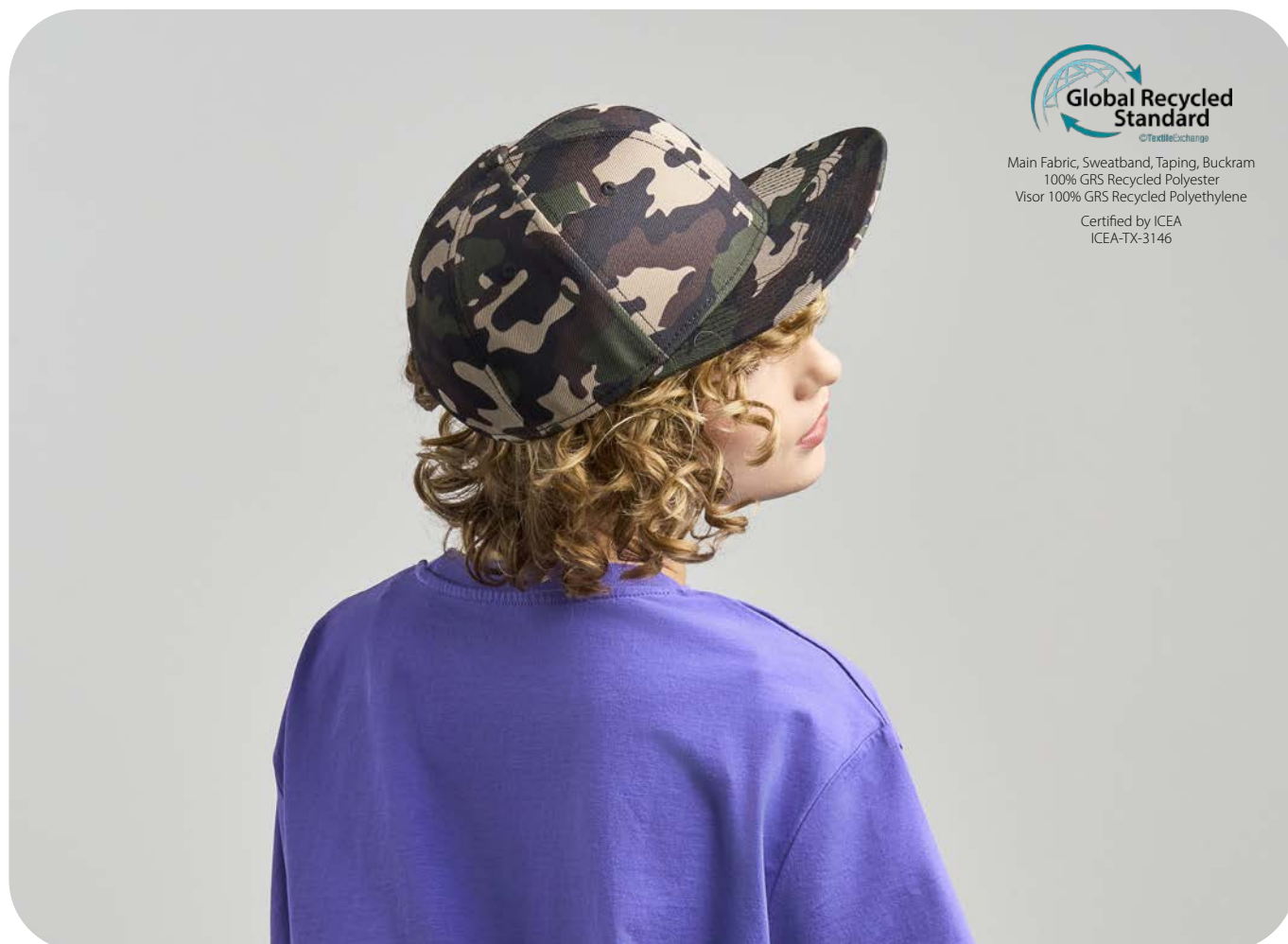
ONE SIZE · 300 GSM · RECYCLED SNAPBACK CLOSURE

## FEATURES

FLAT VISOR

## SUSTAINABLE FEATURES

RECYCLED BUCKRAM · R-PET SWEATBAND · RETRAZE® RECYCLED VISOR  
 IMPACT REDUCTION: -21% CO<sub>2</sub>eq\* · 0,651 kg CO<sub>2</sub> eq



Main Fabric, Sweatband, Taping, Buckram  
 100% GRS Recycled Polyester  
 Visor 100% GRS Recycled Polyethylene  
 Certified by ICEA  
 ICEA-TX-3146

# Snap Five-S

- Main Fabric: 100% recycled polyester
- Texture: twill



WHITE



GREY



DARK GREY



BLACK



NAVY



RED



ROYAL



CARDINAL



CAMOUFLAGE BLACK



OLIVE

---

## TECH SPECS

ONE SIZE · 300 GSM · RECYCLED SNAPBACK CLOSURE

---

## FEATURES

FLAT VISOR

---

## SUSTAINABLE FEATURES

RECYCLED BUCKRAM · R-PET SWEATBAND · RETRAZE® RECYCLED VISOR  
 IMPACT REDUCTION: -22% CO<sub>2</sub>eq\* · 0,656 kg CO<sub>2</sub> eq



Main Fabric, Sweatband, Taping, Buckram  
 100% GRS Recycled Polyester  
 Visor 100% GRS Recycled Polyethylene

Certified by ICEA  
 ICEA-TX-3146

# Snap Mesh-S

- Main Fabric: 100% recycled polyester
- Side & back: 100% recycled polyester
- Texture: twill



WHITE-WHITE



ORANGE FLUO-BLACK



BLACK-BLACK



DARK GREY-BLACK



YELLOW FLUO-BLACK



NAVY-NAVY



RED-RED



ROYAL-ROYAL



CAMOUFLAGE-BLACK

## TECH SPECS

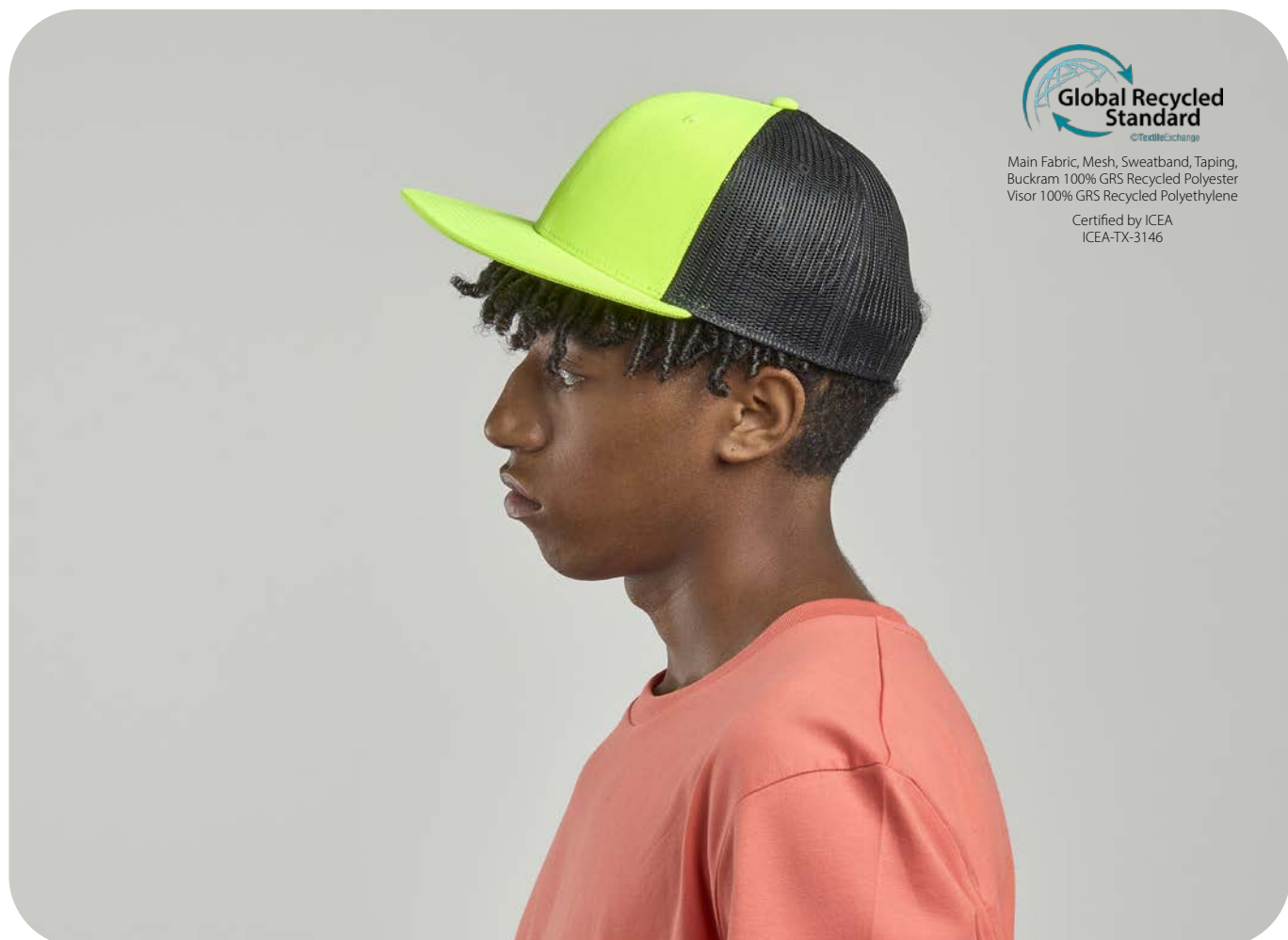
ONE SIZE · 300 GSM · RECYCLED SNAPBACK CLOSURE

## FEATURES

FLAT VISOR

## SUSTAINABLE FEATURES

RECYCLED BUCKRAM · R-PET SWEATBAND · RETRAZE® RECYCLED VISOR  
 IMPACT REDUCTION: -21% CO<sub>2</sub>eq\* · 0,588 kg CO<sub>2</sub> eq



Main Fabric, Mesh, Sweatband, Taping,  
 Buckram 100% GRS Recycled Polyester  
 Visor 100% GRS Recycled Polyethylene

Certified by ICEA  
 ICEA-TX-3146



Main Fabric, Sweatband, Taping  
100% GRS Recycled Polyester  
Visor 100% GRS Recycled Polyethylene

Certified by ICEA  
ICEA-TX-3146



# Snow Flap Stopper-S

• Main Fabric: 100% recycled polyester



DARK GREY



BLACK



NAVY

---

## TECH SPECS

ONE SIZE · 230 GSM · FULLY CLOSED WITH RECYCLED STOPPER

---

## FEATURES

CURVED VISOR · UNSTRUCTURED FRONT PANEL

---

## SUSTAINABLE FEATURES

R-PET SWEATBAND · RETRAZE® RECYCLED VISOR  
IMPACT REDUCTION: -22% CO<sub>2</sub>eq\* · 0,819 kg CO<sub>2</sub> eq

# Sonic-S

- **Main Fabric:** 80% organic cotton - 20% recycled cotton
- **Side & Back:** 100% recycled polyester
- **Texture:** twill



WHITE-WHITE



CARDINAL-BLACK



GREY-BLACK



BOTTLE GREEN-GREY-STONE



MUSTARD-BLACK



BLACK-GREY-WHITE



BLACK-BLACK



NAVY-CARDINAL-WHITE



NAVY - NAVY



NAVY-GREY-WHITE



OLIVE-BLACK



DARK GREY-BLACK



ROYAL-ROYAL



GREY-CARDINAL - STONE



DARK GREY  
ORANGE FLUO



DARK GREY  
FUCHSIA FLUO



DARK GREY  
YELLOW FLUO



DARK GREY  
GREEN FLUO



GREY MELANGE  
WHITE



GREY MELANGE  
BLACK

## TECH SPECS

ONE SIZE · 270 GSM · RECYCLED SNAPBACK CLOSURE

## FEATURES

MID VISOR

## SUSTAINABLE FEATURES

RECYCLED BUCKRAM · RETRAZE® RECYCLED VISOR  
 SELF FABRIC SWEATBAND · IMPACT REDUCTION: -22% CO<sub>2</sub>eq\*  
 0,751 kg CO<sub>2</sub> eq



Mesh, Taping, Buckram  
 100% GRS Recycled Polyester  
 Visor 100% GRS Recycled Polyethylene  
 Certified by ICEA  
 ICEA-TX-3146

# Sport Sandwich-S

- Main Fabric: 80% organic cotton - 20% recycled cotton
- Texture: twill



TECH SPECS	ONE SIZE · 200 GSM · SNAP BUCKLE WITH SEWN HOLE
FEATURES	CURVED VISOR · SANDWICH ON VISOR · LIGHT BRUSHED
SUSTAINABLE FEATURES	RECYCLED BUCKRAM · R-PET SWEATBAND · RETRAZE® RECYCLED VISOR IMPACT REDUCTION: -21% CO <sub>2</sub> eq* · 0,680 kg CO <sub>2</sub> eq



Sweatband, Taping, Buckram  
100% GRS Recycled Polyester  
Visor 100% GRS Recycled Polyethylene  
Certified by ICEA  
ICEA-TX-3146

# Swing-S

- Main Fabric: 80% organic cotton - 20% recycled cotton
- Texture: twill



DARK GREY



KHAKI



BLACK



NAVY



OLIVE

---

## TECH SPECS

ONE SIZE · 280 GSM · HOOK & LOOP CLOSURE

---

## FEATURES

MID VISOR · LIGHT BRUSHED

---

## SUSTAINABLE FEATURES

RETRAZE® RECYCLED VISOR · R-PET SWEATBAND

IMPACT REDUCTION: -21% CO<sub>2</sub>eq\* · 0,665 kg CO<sub>2</sub> eq



Sweatband, Taping  
100% GRS Recycled Polyester  
Visor 100% GRS Recycled Polyethylene  
Certified by ICEA  
ICEA-TX-3146



Sweatband, Taping  
100% GRS Recycled Polyester  
Visor 100% GRS Recycled Polyethylene

Certified by ICEA  
ICEA-TX-3146



# Tank-S

- Main Fabric: 80% organic cotton - 20% recycled cotton
- Texture: twill



DARK GREY



KHAKI



BLACK



NAVY



OLIVE

---

## TECH SPECS

ONE SIZE · 280 GSM · HOOK & LOOP CLOSURE

---

## FEATURES

CURVED VISOR · LIGHT BRUSHED

---

## SUSTAINABLE FEATURES

RETRAZE® RECYCLED VISOR · R-PET SWEATBAND  
IMPACT REDUCTION: -21% CO<sub>2</sub>eq\* · 0,810 kg CO<sub>2</sub> eq

# Techno Flap-S

- **Main Fabric:** 100% recycled nylon
- **Lining:** 100% recycled polyester



DARK GREY

BLACK

NAVY

RED

## TECH SPECS

ONE SIZE · 120 GSM · FULLY CLOSED WITH RECYCLED STOPPER

## FEATURES

CURVED VISOR · METAL EYELETS · WATER RESISTANT - PFC FREE  
UNSTRUCTURED FRONT PANEL

## SUSTAINABLE FEATURES

RETRAZE® RECYCLED VISOR · FULL R-PET FLEECE LINING  
IMPACT REDUCTION: -34% CO<sub>2</sub>eq\* · 0,613 kg CO<sub>2</sub> eq



Main Fabric 100% GRS Recycled Nylon  
Lining, Taping 100% GRS Recycled Polyester  
Visor 100% GRS Recycled Polyethylene

Certified by ICEA  
ICEA-TX-3146



# Uniform-S

- Main Fabric: 80% organic cotton - 20% recycled cotton
- Texture: twill



KHAKI



BLACK



NAVY



OLIVE

---

## TECH SPECS

ONE SIZE · 280 GSM · HOOK & LOOP CLOSURE

---

## FEATURES

CURVED VISOR · GARMENT WASHING

---

## SUSTAINABLE FEATURES

SELF FABRIC SWEATBAND · RECYCLED VISOR

IMPACT REDUCTION: -21% CO<sub>2</sub>eq\* · 0,925 kg CO<sub>2</sub> eq



Taping  
100% GRS Recycled Polyester  
Certified by ICEA  
ICEA-TX-3146

# Wind-S

• Main Fabric: 100% recycled polyester



TECH SPECS

ONE SIZE · 70 G

SUSTAINABLE FEATURES

IMPACT REDUCTION: -22% CO<sub>2</sub>eq\* · 0,588 kg CO<sub>2</sub> eq





100% GRS Recycled Polyester  
 Certified by ICEA  
 ICEA-TX-3146



STANDARD  
 100  
 SH020 220679  
 TESTEX

# Wind-S with Patch

• Main Fabric: 100% recycled polyester



DARK GREY



BLACK



NAVY



RED



ROYAL

TECH SPECS

ONE SIZE · 74 G

FEATURES

BLANK PATCH

SUSTAINABLE FEATURES

IMPACT REDUCTION: -23% CO<sub>2</sub>eq\* · 0,684 kg CO<sub>2</sub> eq

# Wind-S with pompom

• Main Fabric: 100% recycled polyester



BEIGE



WHITE



DARK GREY



BLACK



NAVY



OLIVE



RED



ROYAL

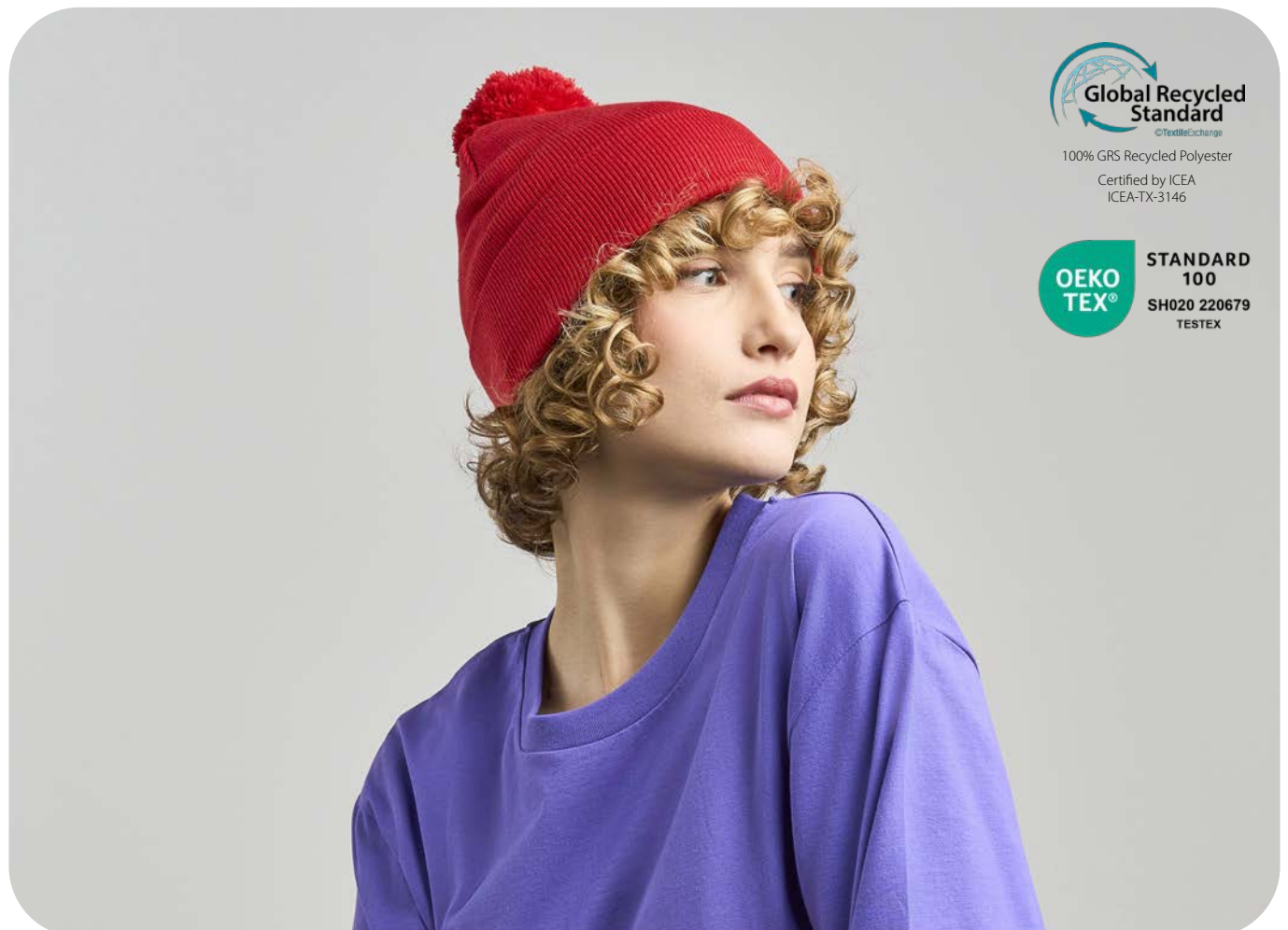


TECH SPECS

ONE SIZE · 85 G

SUSTAINABLE FEATURES

IMPACT REDUCTION: -29% CO<sub>2</sub>eq\* · 0,696 kg CO<sub>2</sub> eq



100% GRS Recycled Polyester  
Certified by ICEA  
ICEA-TX-3146



STANDARD  
100  
SH020 220679  
TESTEX

# Wind Scarf-S

• Main Fabric: 100% recycled polyester



DARK GREY



BLACK



NAVY

---

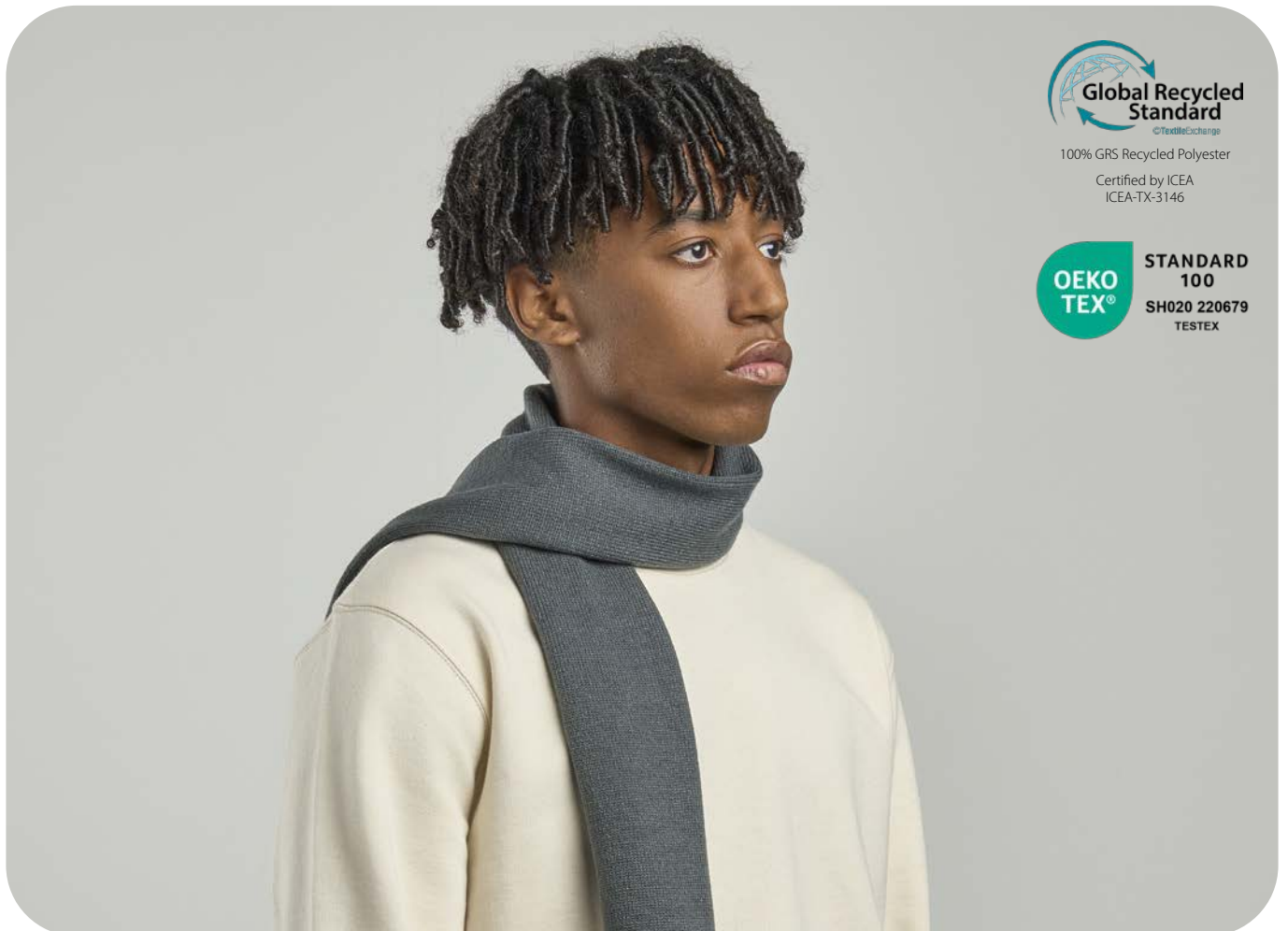
TECH SPECS

160x25CM · 146 G

---

SUSTAINABLE FEATURES

IMPACT REDUCTION: -23% CO<sub>2</sub>eq\* · 1,100 kg CO<sub>2</sub> eq



100% GRS Recycled Polyester

Certified by ICEA  
ICEA-TX-3146



STANDARD  
100  
SH020 220679  
TESTEX

# Winner-S

- Main Fabric: 100% recycled polyester
- Texture: twill



BLACK



NAVY

---

## TECH SPECS

ONE SIZE · 300 GSM · FULL METAL BUCKLE WITH SEWN HOLE

---

## FEATURES

CURVED VISOR · LAUREL ON VISOR

---

## SUSTAINABLE FEATURES

RECYCLED BUCKRAM · RETRAZE® RECYCLED VISOR · R-PET SWEATBAND  
IMPACT REDUCTION: -21% CO<sub>2</sub>eq\* · 0,671 kg CO<sub>2</sub> eq



Main Fabric, Sweatband, Taping, Buckram  
100% GRS Recycled Polyester

Visor 100% GRS Recycled Polyethylene

Certified by ICEA  
ICEA-TX-3146



100% GRS Recycled Polyester

Certified by ICEA  
ICEA-TX-3146



# Workout-S

• Main Fabric: 100% recycled polyester



ORANGE FLUO



YELLOW FLUO



BLACK

---

TECH SPECS

ONE SIZE · 74 G

---

FEATURES

REFLECTIVE YARN

---

SUSTAINABLE FEATURES

IMPACT REDUCTION: -22% CO<sub>2</sub>eq\* · 0,629 kg CO<sub>2</sub> eq

# Yala

• Main Fabric: 100% organic cotton



ORANGE



BURGUNDY



LIGHT GREY



MUSTARD



BLACK



OLIVE



ROYAL



LEAF GREEN

TECH SPECS

ONE SIZE · 60 G

SUSTAINABLE FEATURES

IMPACT REDUCTION: -9% CO<sub>2</sub>eq\* · 0,735 kg CO<sub>2</sub> eq



Organic  
Certified by ICEA  
GOTS-11099

# Yukon

- Main Fabric: 100% recycled polyester
- Texture: microtwill



WHITE



GREY



DARK GREY



BLACK



NAVY

---

## TECH SPECS

ONE SIZE · 200 GSM · RECYCLED SNAPBACK CLOSURE

---

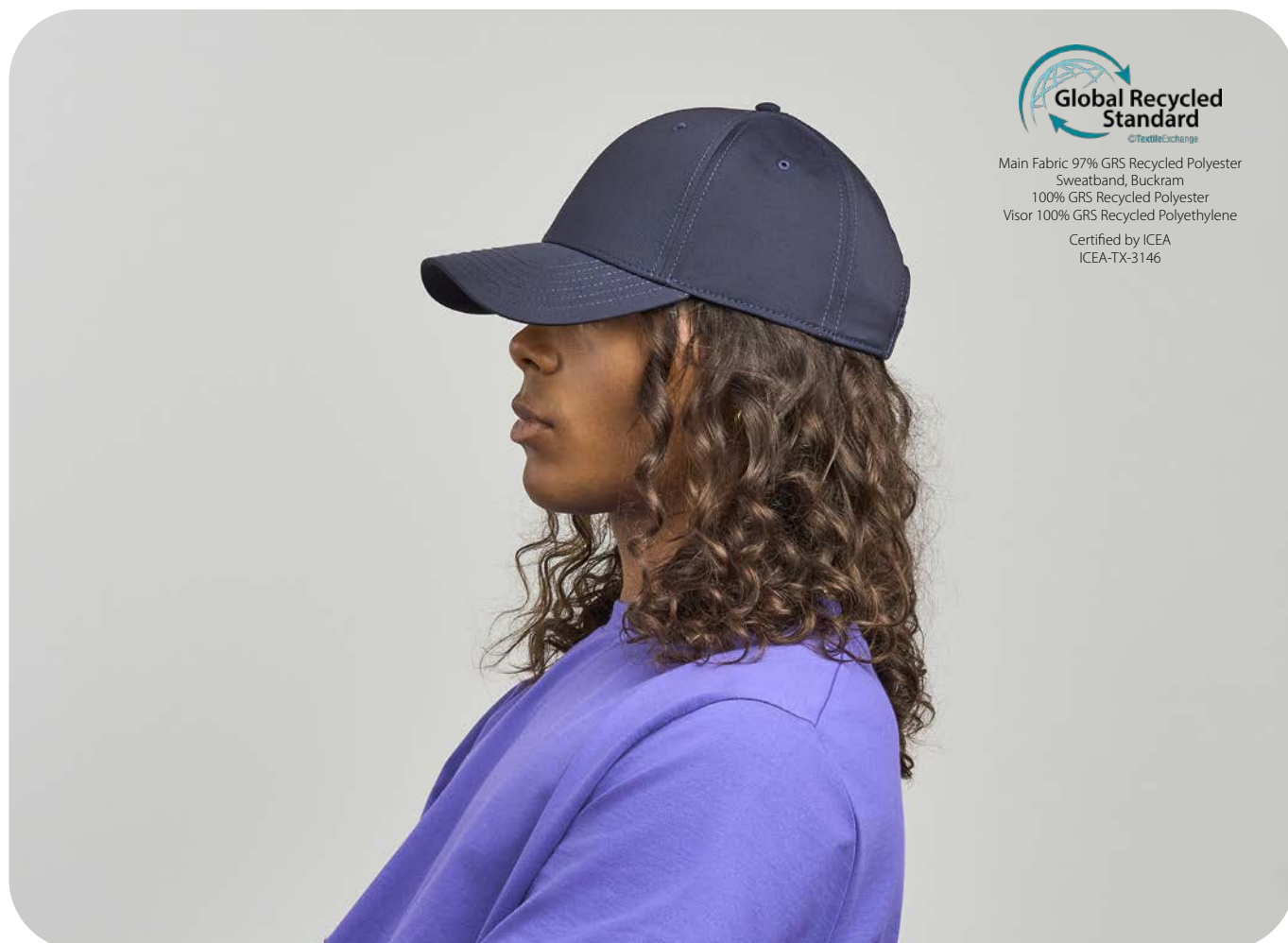
## FEATURES

MID VISOR

---

## SUSTAINABLE FEATURES

RECYCLED BUCKRAM · R-PET SWEATBAND · RETRAZE® RECYCLED VISOR  
IMPACT REDUCTION: -20% CO<sub>2</sub>eq\* · 0,549 kg CO<sub>2</sub> eq



Main Fabric 97% GRS Recycled Polyester  
Sweatband, Buckram  
100% GRS Recycled Polyester  
Visor 100% GRS Recycled Polyethylene  
Certified by ICEA  
ICEA-TX-3146

# Zion

- Main Fabric: 100% recycled polyester
- Side & Back: 100% recycled polyester
- Texture: twill



## TECH SPECS

ONE SIZE · 200 GSM · RECYCLED SNAPBACK CLOSURE

## FEATURES

CURVED VISOR

## SUSTAINABLE FEATURES

RECYCLED BUCKRAM · RETRAZE® RECYCLED VISOR  
 SELF FABRIC SWEATBAND · IMPACT REDUCTION: -22% CO<sub>2</sub>eq\*  
 0,507 kg CO<sub>2</sub> eq



Main fabric, Taping, Buckram  
 100% GRS Recycled Polyester  
 Mesh 72% GRS Recycled Polyester  
 Visor 100% GRS Recycled Polyethylene

Certified by ICEA  
 ICEA-TX-3146







# Action

• Main Fabric: 100% cotton



LIGHT BLUE



WHITE



GREY



DARK GREY



KHAKI



NAVY



OLIVE



RED



PINK



STONE



BLACK

TECH SPECS

ONE SIZE · 280 GSM · SUNDAY BUCKLE

FEATURES

CURVED VISOR · GARMENT WASHING · METAL EYELETS

SUSTAINABLE FEATURES

RETRAZE® RECYCLED VISOR



# Bandana Goal

- Main Fabric: 100% cotton



COLUMBIA BLUE



WHITE



YELLOW



BLACK



NAVY



RED



PINK



ROYAL



TECH SPECS

52x52 · 110 GSM

# Beat

- Main Fabric: 100% polyester
- Underbill: 100% cotton



BLACK



NAVY



TECH SPECS

ONE SIZE · 300 GSM · SNAPBACK CLOSURE

FEATURES

MID VISOR · COTTON SWEATBAND · STRUCTURED FRONT PANEL

SUSTAINABLE FEATURES

RETRAZE® RECYCLED VISOR

# Bolt

• Main Fabric: 100% polyester



BLACK

NAVY



TECH SPECS

ONE SIZE · 170 GSM · HIGH QUALITY HOOK & LOOP CLOSURE

FEATURES

CURVED VISOR · STRETCHABLE FABRIC · DRY-TECH SWEATBAND

SUSTAINABLE FEATURES

RETRAZE® RECYCLED VISOR

# Bucket Cotton

• Main Fabric: 100% cotton



WHITE

KHAKI

BLACK

NAVY

OLIVE

ROYAL



TECH SPECS

ONE SIZE · 180 GSM

FEATURES

SOFT CROWN

SUSTAINABLE FEATURES

SELF FABRIC SWEATBAND

# Cargo

- Main Fabric: 100% cotton



YELLOW



GREY



BLACK



NAVY



---

## TECH SPECS

ONE SIZE · 280 GSM · SUNDAY BUCKLE CLOSURE

## FEATURES

CURVED VISOR · GARMENT WASHING · STRUCTURED FRONT PANEL

# Case

- Main Fabric: 100% cotton
- Side & back: 100% polyester



BLACK-STONE



NAVY-STONE



---

## TECH SPECS

ONE SIZE · 250 GSM · HOOK & LOOP CLOSURE

## FEATURES

MID VISOR · PIGMENT DYED FABRIC · UNSTRUCTURED FRONT PANEL

# Dad Hat

• Main Fabric: 100% chino cotton



NAVY

BLACK

WHITE

---

## TECH SPECS

ONE SIZE · 280 GSM · FULL METAL BUCKLE WITH METAL HOLE

## FEATURES

MID VISOR · UNSTRUCTURED FRONT PANEL · GARMENT WASHING

---



# Digg

• Main Fabric: 100% cotton



---

TECH SPECS

ONE SIZE · 250 GSM · FULL METAL BUCKLE WITH METAL HOLE

FEATURES

MID VISOR · PIGMENT DYED FABRIC · UNSTRUCTURED FRONT PANEL

# Docker

• Main Fabric: 80% acrylic - 20% polyester



---

TECH SPECS

ONE SIZE · 80 G

# Eko Beanie

• Main Fabric: 100% acrylic



TECH SPECS

ONE SIZE · 80 G

# Estoril

• Main Fabric: 100% polyester



TECH SPECS

ONE SIZE · 150 GSM · HIGH QUALITY HOOK&LOOP WITH PLASTIC BUCKLE

FEATURES

CURVED VISOR · HALF PIPING ON VISOR · STRUCTURED FRONT PANEL

# Flash

• Main Fabric: 95% cotton - 5% elastane



BLACK



ROYAL

---

TECH SPECS

ONE SIZE · 200 GSM

FEATURES

STRETCHABLE FABRIC

---

# Forever

• Main Fabric: 100% cotton



BLACK



NAVY



OLIVE

---

TECH SPECS

S/M - L/XL · 280 GSM

FEATURES

GARMENT WASHING

---

# Freedom Basic

- Main Fabric: 100% polyester



BLACK



RED

---

TECH SPECS

49x25 · 130 GSM

## Gear

- Main Fabric: 100% cotton
- Front&bill: 98% polyester - 2% elastane



WHITE



BLACK



RED



NAVY



---

TECH SPECS

ONE SIZE · 280 GSM · HOOK & LOOP CLOSURE

FEATURES

CURVED VISOR · STRUCTURED FRONT PANEL · COTTON SWEATBAND

# Hit

• Main Fabric: 100% cotton



WHITE



NAVY



DARK GREY



BLACK



OLIVE



RED



LIGHT GREY

---

TECH SPECS

ONE SIZE · 280 GSM · SUNDAY BUCKLE

FEATURES

CURVED VISOR · STRUCTURED FRONT PANEL · SELF FABRIC SWEATBAND

# Hotty

• Main Fabric: 100% polyester



BLACK



NAVY

---

TECH SPECS

28x25 CM · 230 GSM · ELASTIC STRING WITH PLASTIC STOPPER

# Liberty Five

• Main Fabric: 100% cotton



NAVY



RED



BLACK



BOTTLE GREEN

---

TECH SPECS

ONE SIZE · 260-265 GSM · HOOK & LOOP CLOSURE

---

FEATURES

CURVED VISOR · STRUCTURED FRONT PANEL · HEAVY BRUSHED

# Liberty Five Buckle

• Main Fabric: 100% cotton



BLACK

---

TECH SPECS

ONE SIZE · 260-265 GSM · SNAP BUCKLE WITH SEWN HOLE

---

FEATURES

CURVED VISOR · STRUCTURED FRONT PANEL · HEAVY BRUSHED

# Liberty Sandwich

• Main Fabric: 100% cotton



LIGHT BLUE-WHITE



WHITE-NAVY



WHITE-WHITE



GREY-WHITE



LIGHT GREY-WHITE



GREY-NAVY-GREY



KHAKI-KHAKI



NATURAL-NAVY-NATURAL



BLACK-WHITE



BLACK-GREY-BLACK



BLACK-BLACK



BLACK-RED



NAVY-WHITE



NAVY-NAVY



OLIVE-NATURAL



RED-WHITE



RED-NAVY-RED



ROYAL-WHITE



GREEN-WHITE



PURPLE-WHITE

## TECH SPECS

ONE SIZE · 275 GSM · SNAP BUCKLE WITH SEWN HOLE

## FEATURES

CURVED VISOR · STRUCTURED FRONT PANEL · SANDWICH ON VISOR  
HEAVY BRUSHED



# Liberty Six

• Main Fabric: 100% cotton



BLACK

NAVY

RED

ROYAL

---

TECH SPECS

ONE SIZE · 260-265 GSM · HOOK & LOOP CLOSURE

---

FEATURES

CURVED VISOR · STRUCTURED FRONT PANEL · HEAVY BRUSHED

# Liberty Six Buckle

• Main Fabric: 100% cotton



NAVY

BLACK

KHAKI

---

TECH SPECS

ONE SIZE · 260-265 GSM · FULL METAL BUCKLE WITH METAL HOLE

---

FEATURES

CURVED VISOR · STRUCTURED FRONT PANEL · HEAVY BRUSHED

# Moover

• Main Fabric: 100% acrylic



DARK GREY



NAVY



---

TECH SPECS

ONE SIZE · 55 G

# Pilot

• Main Fabric: 100% cotton



KHAKI



BLACK



NAVY



OLIVE



---

TECH SPECS

ONE SIZE · 320 GSM · FULL METAL BUCKLE WITH SEWN HOLE

FEATURES

CURVED VISOR · STRUCTURED FRONT PANEL · HEAVY BRUSHED

# Pilot Piping Sandwich

• Main Fabric: 100% cotton



ROYAL-WHITE



BLACK-WHITE



NAVY-WHITE



RED-WHITE

---

## TECH SPECS

ONE SIZE · 320 GSM · FULL METAL BUCKLE WITH METAL HOLE

## FEATURES

CURVED VISOR · STRUCTURED FRONT PANEL · PIPING ON VISOR  
HEAVY BRUSHED



# Rapper

- Main Fabric: 100% polyester
- Side & Back: 100% polyester



ORANGE FLUO



ORANGE-BLACK



WHITE-BLACK-BURGUNDY



GREEN FLUO



WHITE-RED-BLACK



WHITE-RED-ROYAL



WHITE-GREEN



FUCHSIA FLUO



YELLOW FLUO



YELLOW-BLACK



DARK GREY-RED



BLACK



BLACK-BLACK



NAVY



OLIVE-BLACK



RED



ROYAL



GREEN

TECH SPECS

ONE SIZE · 80 GSM · SNAPBACK CLOSURE

FEATURES

CURVED VISOR · PADDED FRONT PANEL



# Rapper Canvas

- Main Fabric: 100% cotton
- Side & Back: 100% polyester



OLIVE-KHAKI



GREY-BLACK



WHITE-YELLOW-DK GREY



BLACK-GREY



NAVY-BURGUNDY-BEIGE



NAVY-YELLOW



ROYAL-GREY



BOTTLE GREEN-WHITE



---

## TECH SPECS

ONE SIZE · 260 GSM · SNAPBACK CLOSURE

## FEATURES

CURVED VISOR · STRUCTURED FRONT PANEL · GARMENT WASHING  
SHORT VISOR



# Rapper Cotton

- Main Fabric: 100% cotton
- Side & Back: 100% polyester



WHITE-WHITE



BURGUNDY-BURGUNDY



BURGUNDY-STONE



DARK GREY-BLACK



KHAKI-STONE



MUSTARD-BLACK



BLACK-BLACK



NAVY-GREY



NAVY-NAVY



OLIVE-BLACK



RED-RED



ROYAL-ROYAL

TECH SPECS

ONE SIZE · 180 GSM · SNAPBACK CLOSURE

FEATURES

CURVED VISOR · STRUCTURED FRONT PANEL



# Rapper Jersey

- Main Fabric: 100% cotton
- Side & Back: 100% polyester



DARK GREY

NAVY

TECH SPECS

ONE SIZE · 220 GSM · SNAPBACK CLOSURE

FEATURES

MID VISOR · STRUCTURED FRONT PANEL · SOFT MESH

# Shot

- Main Fabric: 100% cotton



WHITE

YELLOW

LIGHT GREY

DARK GREY



BLACK

NAVY

RED

ROYAL

TECH SPECS

ONE SIZE · 280 GSM · SUNDAY BUCKLE

FEATURES

CURVED VISOR · STRUCTURED FRONT PANEL · SELF FABRIC SWEATBAND

# Skate

- Main Fabric: 100% acrylic



BLACK



NAVY



DARK GREY



TECH SPECS

ONE SIZE · 69 G

# Snap Back

- Main Fabric: 100% polyester
- Underbill: 100% cotton



BLACK



BLACK-GREY



NAVY



NAVY-RED



TECH SPECS

ONE SIZE · 300 GSM · SNAPBACK CLOSURE

FEATURES

FLAT VISOR · STRUCTURED FRONT PANEL · COTTON SWEATBAND

# Snap Five

- Main Fabric: 100% polyester
- Underbill: 100% cotton



BLACK

NAVY

RED



---

## TECH SPECS

ONE SIZE · 300 GSM · SNAPBACK CLOSURE

---

## FEATURES

FLAT VISOR · STRUCTURED FRONT PANEL · COTTON SWEATBAND

# Snow Flap Stopper

- Main Fabric: 100% polyester



BLACK



---

## TECH SPECS

ONE SIZE · 240 GSM · FULLY CLOSED ON BACK WITH STOPPER

---

## FEATURES

CURVED VISOR · UNSTRUCTURED FRONT PANEL  
SELF FABRIC SWEATBAND

# Sport Sandwich

• Main Fabric: 100% cotton



WHITE-NAVY



WHITE-WHITE



GREY-WHITE



BLACK-WHITE



BLACK-BLACK



NAVY-WHITE



NAVY-NAVY



OLIVE-WHITE



GREEN - WHITE



BOTTLE GREEN - WHITE

---

## TECH SPECS

ONE SIZE · 180 GSM · SNAP BUCKLE WITH SEWN HOLE

## FEATURES

CURVED VISOR · STRUCTURED FRONT PANEL · SANDWICH ON VISOR



# Start Five

• Main Fabric: 100% cotton



BURGUNDY



CAMOUFLAGE



YELLOW



GREY



ORANGE



WHITE



BLACK



NAVY



OLIVE



RED



ROYAL



BOTTLE GREEN



GREEN

---

TECH SPECS

ONE SIZE · 165 GSM · HOOK & LOOP CLOSURE

FEATURES

CURVED VISOR · STRUCTURED FRONT PANEL



# Start Five Italia

• Main Fabric: 100% cotton



WHITE

BLACK

RED



---

TECH SPECS

ONE SIZE · 165 GSM · HOOK & LOOP CLOSURE

---

FEATURES

CURVED VISOR · STRUCTURED FRONT PANEL · HALF PIPING ON VISOR

# Start Five Sandwich

• Main Fabric: 100% cotton



ORANGE-WHITE

KHAKI-NAVY

BLACK-WHITE

WHITE-NAVY



RED-WHITE

ROYAL-WHITE

BURGUNDY-WHITE

NAVY-WHITE



---

TECH SPECS

ONE SIZE · 165 GSM · HOOK & LOOP CLOSURE

---

FEATURES

CURVED VISOR · STRUCTURED FRONT PANEL · SANDWICH ON VISOR

# Start Six

• Main Fabric: 100% cotton



KHAKI



BLACK



NAVY



OLIVE



RED



---

TECH SPECS

ONE SIZE · 165 GSM · HOOK & LOOP CLOSURE

FEATURES

CURVED VISOR · STRUCTURED FRONT PANEL

# Uniform

• Main Fabric: 100% cotton



NAVY



---

TECH SPECS

ONE SIZE · 280 GSM · HOOK & LOOP CLOSURE

FEATURES

CURVED VISOR · SELF FABRIC SWEATBAND · GARMENT WASHING

# Viral

• Main Fabric: 47% viscose - 23% polyester - 30% nylon



BURGUNDY MEL



GREY MEL

TECH SPECS

ONE SIZE · 78 G



# Wind

• Main Fabric: 100% acrylic



ORANGE FLUO



WHITE



BURGUNDY



BEIGE



YELLOW FLUO



GREY MEL



LIGHT GREY



BROWN



OFF RED



BLACK



NAVY



OLIVE



RED



CORAL



ROYAL



BOTTLE GREEN



GREEN FLUO

TECH SPECS

ONE SIZE · 70 G



# Zoom

• Main Fabric: 65% polyester - 35% cotton



WHITE



BLACK



NAVY

---

TECH SPECS

ONE SIZE · 180 GSM · HOOK & LOOP CLOSURE

FEATURES

CURVED VISOR · STRUCTURED FRONT PANEL

---



# The preferred materials portfolio

The **environmental impact benefits** derived from our choice of **preferred materials** are clearly outlined in the 'Sustainable Features' section for each **lower-impact product**, marked with an asterisk (\*). These notations underscore the **specific CO<sub>2</sub>eq impact reductions in percentage and the Carbon Footprint of one unit**, demonstrating the advantages of our **environmentally conscious practices**.

**Life Cycle Assessment (LCA) studies** on our top-selling products<sup>1</sup> reveal that **45.5% to 75% of CO<sub>2</sub> equivalent emissions are attributable to the materials used in our hats**. This insight drives our preference for **recycled materials to mitigate environmental impact significantly**.

In cases where recycled options are unavailable, we choose virgin materials with the minimal possible environmental footprint or from regenerative sources.

Discover the **preferred materials** featured in the Atlantis 2026 Collection, designed to collectively **reduce the impact of our choices**:

- Dope-dyed recycled polyester
- Organic cotton
- Polylana®
- Recycled cotton
- Recycled polyester
- Recycled nylon
- Recycled polyethylene
- Recycled merino wool
- Repreve®
- Textile-to-Textile recycled polyester





Our **ongoing product assessment**, crucial for our **transparency**, empowers you with **essential information** to make informed purchasing decisions. This process also helps **optimize our design** choices, continually **minimizing the environmental impact** of our products.

We invite you to **explore the CO<sub>2</sub>eq impact reductions** for each item crafted from our **preferred materials**<sup>2</sup>.

<sup>1</sup> <https://atlantisheadwear.com/en/projects/carbon-footprint/>

<sup>2</sup> Reductions are calculated through a sensitivity analysis contrasting the environmental impact of low-impact materials against conventional ones, using the certified CF Atlantis calculation tool v. 0.7. This tool meticulously tracks the Cradle to gate journey from raw material acquisition to final product delivery at the Atlantis warehouse.



# Embracing Circular Innovation with Textile-to- Textile Recycled Polyester

At the core of our innovation lies a deep commitment to environmental responsibility. We continually push the boundaries with polyester, a fiber known for its durability, wrinkle resistance, and lightweight nature. Mechanically recycled polyester (rPET), derived from PET bottles, has been a significant step toward more responsible fashion. It is **widely available** and makes use of **existing waste**, thus **reducing our environmental footprint**.

However, recognizing that rPET is not the ultimate solution, we introduced a groundbreaking innovation starting with our 2025 collection: **textile-to-textile recycled polyester**. This material begins as textile waste and is **chemically transformed into high-quality, recyclable fibers that mimic virgin polyester** but with a significantly lower environmental impact. Managed under the strictest health and safety standards<sup>1</sup>, this process not only aligns with sustainability principles but also challenges the status quo of responsible materials.

**With each new collection, we take the next step forward.** This year, Teide joins Maui in our virtuous and sustainable product line. It is the **second product made from textile-to-textile recycled polyester**, created by transforming textile waste into high-quality fibers that look and perform like virgin polyester, but with a much lower environmental impact.

<sup>1</sup> <https://textileexchange.org/pfmm/>

# Two materials that move us forward

Wool is a remarkable natural fiber: light, breathable, and capable of providing warmth even in the most extreme conditions. Yet its production can have significant impacts on both animal welfare and the environment.

This is why we chose a different path. Our **new wool fabric is made from 100% recycled pre-consumer wool**, recovered from industrial offcuts before they become waste.

It preserves the essential qualities of wool while avoiding the impacts linked to virgin fiber production.

Available comparative analyses conducted with the CF Atlantis calculation tool show that **1 kg of recycled wool can reduce environmental impact by up to 88% compared to virgin wool<sup>1</sup> fabric.**

A concrete step towards circularity, built on the value of resources already in circulation.



**Denim** follows a similar direction. Known for its durability and iconic look, denim also carries a traditionally high environmental footprint, particularly due to water consumption and intensive use of chemicals in production. Starting with the 2026 collection, we introduce a **more responsible alternative** on both the fabric and dyeing levels.

Our new material combines **50% recycled cotton** with a more efficient dyeing technology: **DyStar® Indigo Vat 40% Solution<sup>2</sup>**, a pre-reduced liquid formulation that, compared to traditional indigo-powder dyeing, helps:

- **eliminate up to 70% of sodium hydrosulfite**
- **reduce pollutants in wastewater (-70% COD, -40% sulfates, -90% suspended solids)**
- **ensure chemical responsibility thanks to bluesign® certification**

Choosing this fabric means promoting **material reuse**, lowering water and chemical demand, and benefiting from a dyeing process with demonstrably **lower impact**. Overall, this solution delivers an **approximate 20% reduction in carbon footprint** compared to standard denim<sup>3</sup>.

Two new materials, one direction: using what already exists, refining the processes that shape it, and moving design toward a **more responsible future**.

<sup>1</sup> Reduction values are estimated through a comparative analysis between recycled and virgin wool using the certified CF Atlantis calculation tool v.0.7.

<sup>2</sup> Data provided by DyStar®, comparing Indigo Vat 40% Solution with traditional indigo-powder dyeing.

<sup>3</sup> Carbon footprint estimate based on a comparative analysis using the ecoinvent 3.11 database, supported by custom datasets. The study compared conventional denim (100% cotton, traditionally dyed) with a fabric containing 50% post-consumer recycled cotton dyed with a lower-impact technology.







# Not only fabrics

We go further, converting traditional components into recycled alternatives:

RECYCLED VISOR

RECYCLED BUCKRAM

RECYCLED CLOSURES

RECYCLED SWEATBAND

RECYCLED TAPING

RECYCLED LAMINATION

# ReTraze<sup>®</sup> Recycled Visors: a waste with impact



DISCARDED FISHING  
NETS



FISHING NETS  
SCRAPS

The story of Atlantis Headwear begins with a question that has never stopped guiding us: **“How can we truly reduce the environmental impact of our products?”**

Since 2021, we have chosen to take a closer look by conducting a **Life Cycle Assessment (LCA)** on the most representative products across different categories.

This journey revealed that **fabrics and visors are the main sources of emissions during sourcing and processing**. From there, our decision was clear: **replace virgin plastic in visors with recycled alternatives, without compromising on aesthetics or performance.**

The partnership with **ReTrazé®** enables us to actively address the global issue of “Ghost Gear” by turning marine

pollution into an opportunity for conscious and sustainable design. This initiative collaborates with small businesses, fishermen, and NGOs to collect end-of-life fishing nets before they become marine waste. The nets are sorted, cut, washed, melted, shredded, extruded, and transformed into 100% recycled polyethylene panels. **From these panels, among other things, come the visors of our caps** that allow us to cut CO<sub>2</sub>eq emissions by -46%\* compared to virgin plastic, without sacrificing the aesthetic and functional qualities that define each of our products.

\*Reductions are calculated through a sensitivity analysis contrasting the environmental impact of low-impact materials against conventional ones, using the certified CF Atlantis calculation tool v. 0.7.



CHIPS  
100% RECYCLED PE



RETRAZE®  
FISHING NETS PANEL

**Atlantis+**

# Are you an Atlantis reseller?

We have a new service for you and your business





An exclusive platform for retailers.

Get immediate access to a **wide set of online tools** to simply and directly explore our collections, view offers, and connect with our specialists.

Digital catalogues, updated visual materials, and inspiring content:  
**everything you need for easy, successful decision-making.**

# Unlock the potential of your store with an Atlantis Corner

## Engaging Showroom

A well-designed display creates engagement, sparks curiosity, and generates a **positive atmosphere** in your showroom.

## Memorable Brand

An Atlantis corner helps you stand out from the competition with a **unique and memorable visual identity**.

## Tailored Experience

The display increases **customer satisfaction** by offering a **variety of styles and colors**, making it easy for them to try on products.

## Strategic Accessories

Hats are a complementary accessory. Greater visibility will **increase your customers' average spending**.







# Index

ACTION	142	FOREVER	149
ACTION-S	34	FOREVER-S	60
ANDY	35	FRASER	61
ARMY-S	36	FREEDOM BASIC	150
BANDANA GOAL	143	FREEDOM BASIC-S	62
BANDANA GOAL-S	37	GATSBY STREET-S	63
BANK FIVE-S	38	GEAR	150
BARU	28	GEAR-S	64
BEAT	143	GEO	65
BEAT-S	39	GHIBLI	66
BILL-S	40	GLOBE TROTTER-S	67
BIRK	41	GORELY	26
BOLT	144	HELPY-S	68
BOLT-S	30	HIT	151
BOND-S	42	HIT-S	69
BRAD-S	43	HOLLY	70
BREEZY-S	44	HOTTY	151
BRYCE	45	HOTTY-S	71
BUCKET COTTON	144	IRAYA	20
BUCKET COTTON-S	46	ISAR	72
BUCKET POCKET-S	47	JAMES	73
CARGO	145	JOSHUA	74
CASE	145	KAI	75
CHAMPION-S	48	KID FRASER	76
CHAO	15	KID MAYO	77
CORDY-S	49	KID NOMAD-S	78
CREEP-S	50	KID RAPPER-S	79
CRUZ	51	KID RECY FIVE	80
CUMBRE	24	KID SNAP BACK-S	81
DAD HAT	146	KID STAR-S	82
DAD HAT-S	52	KID WIND-S	83
DAD HAT-S FIVE	13	KID WIND-S with POMPOM	29
DAD HAT DESTROYED-S	53	KID YALA	84
DANA	22	LIBERTY FIVE	152
DARWIN	16	LIBERTY FIVE BUCKLE	152
DEMPO	18	LIBERTY SANDWICH	153
DIGG	147	LIBERTY SANDWICH-S	85
DIGG-S	54	LIBERTY SIX	154
DOCKER	147	LIBERTY SIX BUCKLE	154
EKO BEANIE	148	MAPLE	86
EGON	12	MAUI	87
ERIE	55	MOOVER	155
ESTORIL	148	MOOVER-S	88
ESTORIL-S	56	NANTAI	27
FAM-S	57	NELSON	89
FIJI	58	NILA	17
FLASH	149	NOMAD-S	90
FLASH-S	59	OAK	91

PAKA	14	SPORT SANDWICH	163
PICO	92	SPORT SANDWICH-S	125
PIER-S	93	START FIVE	164
PILOT	155	START FIVE ITALIA	165
PILOT-S	94	START FIVE SANDWICH	165
PILOT PIPING SANDWICH	156	START SIX	166
PILOT PIPING SANDWICH-S	95	SWING-S	126
PITCH	96	TANK-S	127
POWELL	97	TECHNO FLAP-S	128
PURE	98	TEIDE	25
RAINY-S	99	TEON	19
RAPPER	157	UNIFORM	166
RAPPER-S	100	UNIFORM-S	129
RAPPER CANVAS	158	VIRAL	167
RAPPER CANVAS-S	101	WIND	168
RAPPER COTTON	159	WIND-S	130
RAPPER COTTON-S	102	WIND-S WITH PATCH	131
RAPPER JERSEY	160	WIND-S WITH POMPOM	132
RAPPER JERSEY-S	31	WIND SCARF-S	133
RAPPER SUEDE-S	103	WINNER-S	134
RAY-S	104	WORKOUT-S	135
RECORD-S	105	YALA	136
RECY BEANIE	106	YUKON	137
RECY FEEL	107	ZION	138
RECY FIVE	108	ZOOM	169
RECY FIVE ITALIA	109		
RECY FIVE PIPING	110		
RECY SIX	111		
RECY THREE	112		
REFLECT-S	113		
RIO	114		
RUBY	21		
SAND	115		
SEVERNY	23		
SHINE	116		
SHORE	117		
SHOT	160		
SHOT-S	118		
SKATE	161		
SKYE	119		
SNAP BACK	161		
SNAP BACK-S	120		
SNAP FIVE	162		
SNAP FIVE-S	121		
SNAP MESH-S	122		
SNOW FLAP STOPPER	162		
SNOW FLAP STOPPER-S	123		
SONIC-S	124		



# Headwear