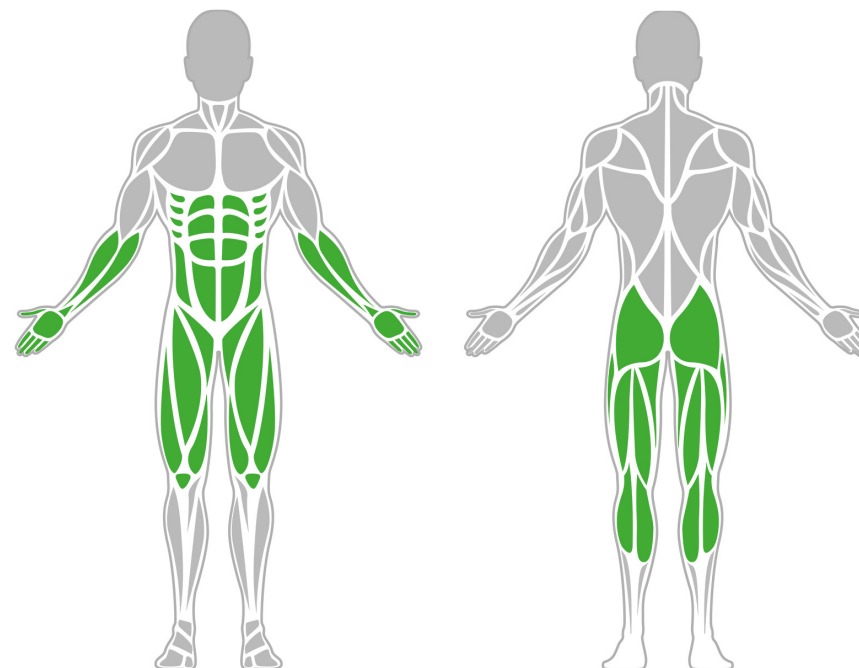




Muscle Groups Focus



Glute-Ham Developer Pro

The GHD (glut hamstring developer) allows you to exercise several muscle groups, in particular the gluteus, flexor, lower back and spine muscles. When performing the so-called GHD sit-up, the abdominal muscles and the entire abdominal and lumbar region can be strengthened.

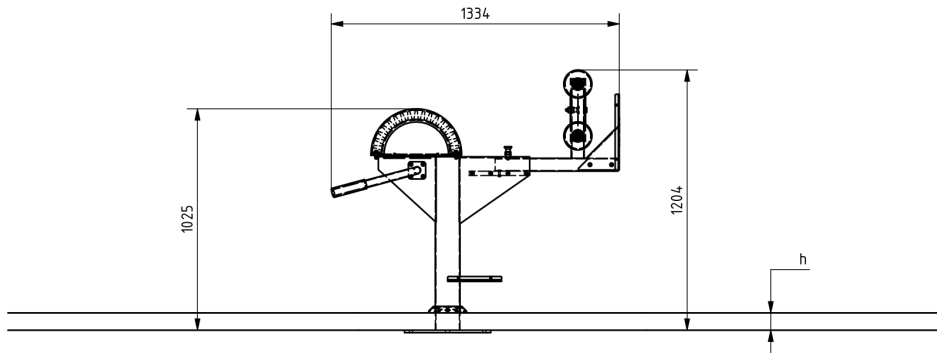
Attributes

Product code	1-1-162
Certificate	EN 16630
Age group	14 + years
Capacity	1 person
Max. weight load	99 kg
Type	Sport Specific
Difficulty level	Medium

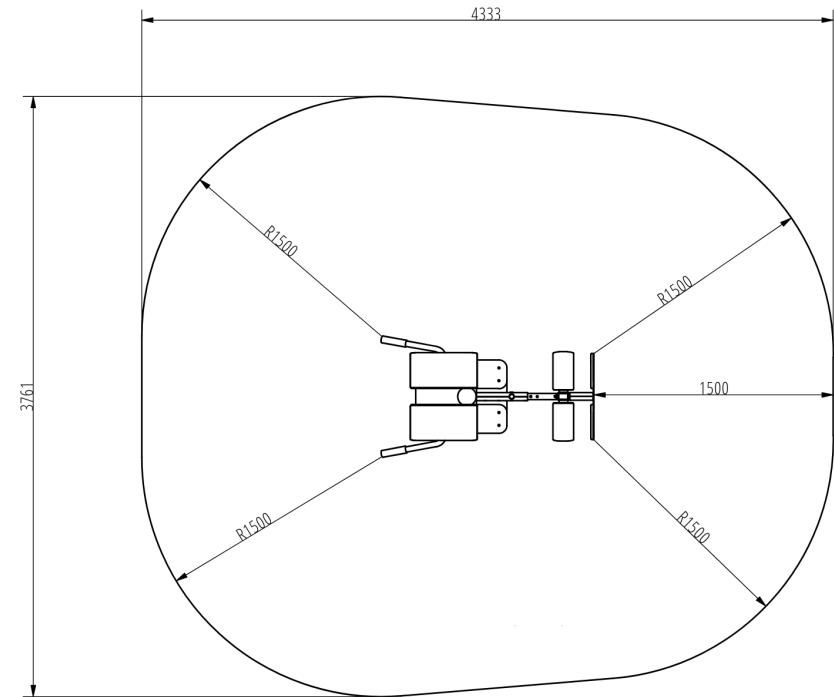
QR Code



Side View




Plan View



Installation information

Number of installers (concrete)	At least 2 people
Total installation time (concrete)	45-75 min.
Number of installers (equipment)	At least 2 people
Total installation time (equipment)	45-60 min.
Excavation volume	0,5 m ³
Concrete volume	0,5 m ³
Size of the base structure	0,8 x 0,8 x 0,8 m
Anchoring options	In-ground or surface
In combined structures, the volume of concrete required varies.	

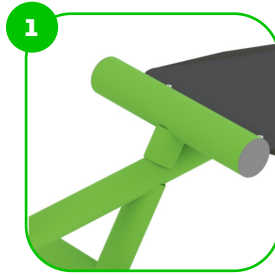
Technical specification

Safety surface area	Around 1,5 m radius
Net weight	92 kg
Material	S235, KO33
Critic fall height	1216 mm
Color options	
For more color options, discuss with your sales representative.	

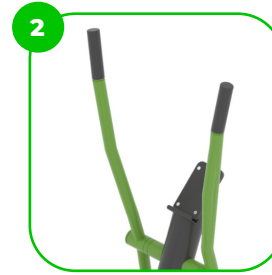
Warranty

Structure	10 years
Steel	5-10 years
Paint	2 years
Plastic	5-10 years
Rubber	1-3 years
Moving parts	2 years
Detailed information in the warranty document	

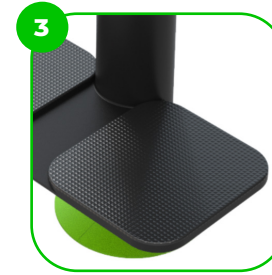
Material specification



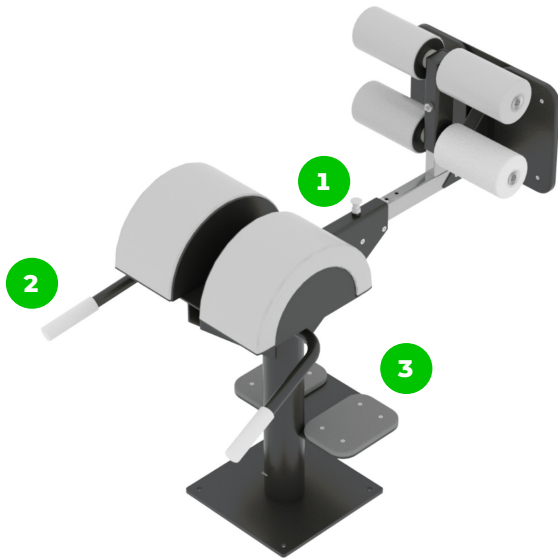
The element is made of high quality S235 steel, which has been cleaned via sandblasting. A corrosion resistant powder coating finish is then applied. Also available with galvanized surface for even greater protection and longevity!



At the end of the arms, the handle is rubber-coated for a more comfortable and secure grip.



The footrests are made of premium quality non-slip HDPE with a high wear resistance.



BESTRONG

 [bestrongworld](#)  [bestrongworld](#)  [global.bestrong.com](#)  info@bestrong.com

