

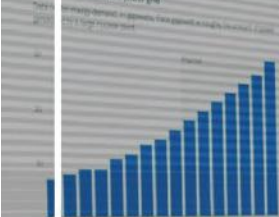
# WASATCH

## AUDIO VISUAL & PRODUCTIONS

Y DEMAND GROWTH

ing and vehicle electrification trends tied to growth in U.S. electricity demand.

U.S. EIA projects that by 2050, electricity demand will grow by 50%.



### CORPORATE EVENT PRODUCTION GUIDE

Event Planning | Rentals | Productions





# ABOUT US

For over 30 years, Wasatch AV & Productions has been a trusted partner in Park City's event landscape.

What we offer goes beyond equipment - we provide something truly invaluable; personalized, hands-on service. Every event is approached with a deep commitment to quality, creativity, & care.

From our humble beginnings in 1995 in a storage closet at a local hotel, we've grown into more than just a production company. Our team has built a legacy rooted in trust, passion, and a dedication to serving our community with excellence.

# CONTENTS

## **ARRIVAL EXPERIENCE** Page 4

## **VIDEO** Pages 5-11

Projectors & Screens

Monitors & Presenter Equipment

LED Walls

Projection Mapping

## **AUDIO** Pages 12-13

## **STAGING** Pages 15-23

Staging Options

Stage Carpet

Stage Furniture

Stage Decor

Podiums

Custom Panels & Backdrops

Scenic Panels

## **DRAPE** Pages 24-26

Velour & Sheer Drapes

Custom Drapes

## **LIGHTING** Pages 27-32

Meeting Lighting

Dinner & Reception Lighting

## **AFTER HOURS** Pages 33-37

Lighting & Special Effects

DJ Equipment

## **TECHNICAL & PRODUCTION SUPPORT** Page 38

Technicians

Technical Director

DJ Services

## **EVENT DESIGN SERVICES** Page 41

## **ACKNOWLEDGMENTS** Page 42

# ARRIVAL EXPERIENCE

Make a powerful and professional first impression the moment your guests arrive. Our curated collection of arrival experience items transforms an ordinary entrance into a seamless, welcoming gateway.



CUSTOM REGISTRATION DESK



CUSTOM GOBOS



AGENDA MONITOR





ancestry

Unbranded Content: More Story, Less Brand

			
Brad Argent Ancestry Studios	Victoria Welch Ancestry Studios	Chloe Slobotkin UTA	Farra Kober BBC Studios

VIDEO





# PROJECTORS & SCREENS

Bring your content to life with vivid, high-resolution projection.

Whether you are hosting an intimate meeting or a large-scale event, our expert team will help you choose the ideal screen size and projector quality to suit your venue and audience. With a wide range of laser projectors, screens, and lenses available, we ensure your visuals are crisp, dynamic, and perfectly scaled for every setting.



# MONITORS & PRESENTER EQUIPMENT



WIRELESS CLICKER



TV MONITORS



SPEAKER TIMER

Our TV monitors are perfect for displaying presentations or video content, and they can serve as repeater screens to ensure every guest has a clear view - even in larger spaces.

We offer tools such as confidence monitors, speaker timers, and wireless slide advancers, all designed to keep your presenters in control and on cue.

Let our expert team help you choose the perfect monitor size and support equipment for a flawless, professional experience.



LED WALLS





## OUTDOOR LED WALL

Designed for high brightness and exceptional visibility, our outdoor LED walls perform beautifully even in direct sunlight.

Their modular design allows for nearly any size or configuration, creating a bold visual centerpiece for large gatherings, concerts, festivals, and outdoor receptions.

Built for outdoor environments, these displays deliver vibrant color and clarity that captivate audiences in any setting.



## INDOOR LED WALL

Perfect for meetings, galas, and corporate events, our indoor LED walls provide stunning high-resolution imagery with crisp detail and seamless color.

The fine pixel pitch ensures sharp visuals for presentations, branding, and video playback in controlled lighting environments.

With flexible sizing and a sleek, modern appearance, indoor LED walls bring a refined visual impact to any event space.

# PROJECTION MAPPING

Projection mapping uses advanced technology to transform ordinary surfaces into dynamic visual displays, bringing architecture, scenery, or stage elements to life with motion and light to create depth, movement, and atmosphere.

Ideal for galas, brand launches, and signature celebrations, projection mapping adds a striking visual element to ballrooms, outdoor venues, and custom stage designs, enhancing the ambiance and storytelling of each event.



[CLICK HERE TO VIEW EXAMPLES](#)





# AUDIO







HANDHELD MICROPHONE



LAVALIER MICROPHONE



SOUND SYSTEM

PODIUM MICROPHONE

Deliver clear, balanced sound for every occasion with our professional sound systems.

From corporate conferences and outdoor speeches to dinners and receptions, our expert team will design the ideal setup to match your venue and audience size. We offer a full range of solutions, including speakers, push-to-talk microphones, handhelds, lavaliers, and mixers to ensure every word is heard and every moment sounds exceptional.









STAGING

# STAGE OPTIONS

Our staging inventory is designed for flexibility and customization, allowing us to create the perfect platform for any event.



## STANDARD RISERS

Available in 4' x 4' and 4' x 8' sections  
8", 16" or 24" rise  
Stairs and ADA compliant ramps available



## CURVED STAGE

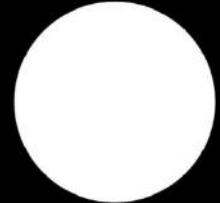
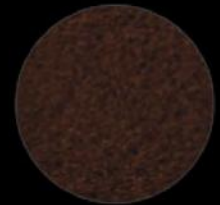
24' x 12' and 24' x 16' size  
8", 16" or 24" rise  
Stairs and ADA compliant ramps available



## CUSTOM STAGE

Beyond our standard inventory, we can design and build custom stage sizes and shapes tailored specifically to your venue and event requirements.

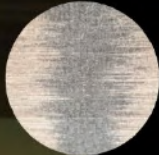
## STAGE SKIRTS



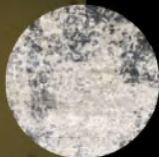




Available in a range of sizes and colors,  
with custom options for any size, color,  
or shape to fit your event.



Brown Patterned Rug  
6'x9'



Blue Patterned Rug  
8'x10'



Grey Carpet  
20'x8'



White Carpet  
Multiple Sizes Available



Plush Grey Carpet  
Multiple Sizes Available



Plush Black Carpet  
Multiple Sizes Available

# STAGE CARPET





A stage set for a production titled "Scripius". The background is a dark blue curtain. At the top center, the word "Scripius" is displayed in a large, glowing neon sign with a stylized, bubbly font. To the left of the title, there is a large, glowing neon letter "S". On either side of the stage, there are tall, cylindrical light fixtures with a patterned, perforated design, emitting a warm, yellow light. The stage is furnished with four modern armchairs with dark wood frames and dark blue upholstered seats and backs. The chairs are arranged in a semi-circle, facing each other. In the center of the stage, there are two small, round, light-colored wooden stools. To the left of the first chair, there is a potted plant with long, green, pointed leaves. To the right of the last chair, there is a potted plant with broad, green leaves. The stage floor is covered with a dark blue carpet. The overall lighting is a mix of the warm yellow from the light pillars and the cool blue from the background curtain.

Scripius

STAGE FURNITURE





GREY OVERSIZED ARMCHAIR



BLACK & WOOD ARMCHAIR



BLACK FELT ARMCHAIR



BROWN LEATHER ARMCHAIR



BLACK SWIVEL BARSTOOLS



BROWN LEATHER BARSTOOLS



BLACK & GREY BARSTOOLS



WOOD STUMP SIDE TABLE



BLACK IRON SIDE TABLE



BROWN ACCENT TABLE



CHESS PIECE SIDE TABLE





Create a refined and memorable stage production with thoughtfully curated decor elements.

A selection of stage decor is available from our in-house inventory, with custom order options in specific styles and sizes to perfectly complement your event vision. We also partner with preferred vendors to source specialty pieces, ensuring a seamless planning experience and a cohesive, polished look for your event.



STAGE PLANTS

PODIUM LOGO



AMERICAN FLAG



BIRCH TREES

CUSTOM NEON SIGN



MARQUEE LETTERS





LUCITE PODIUM



DIGITAL PODIUM



WOOD PODIUM



FROSTED LUCITE PODIUM



TRUSS PODIUM

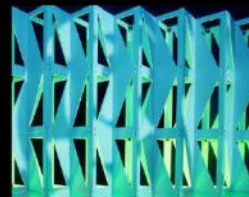
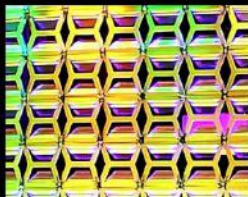




# CUSTOM PANELS & BACKDROPS

Perfect for behind stages, as stylish backdrops for dinners or receptions, or as unique visual features throughout the venue, panels & backdrops can be custom made and ordered to match any theme, branding, or design vision.

Anything imagined can be sourced or produced to create a truly distinctive look.







# SCENIC PANELS

Using 4'x6' modular panels, these can be arranged in endless configurations to create backdrops that are both unique and visually striking.

Enhance the effect with uplighting. Choose from a wide spectrum of colors or set them to rotate for added movement and ambiance.







DRAPE



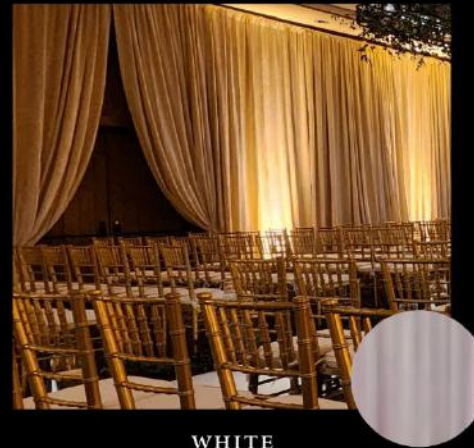
# VELOUR DRAPE



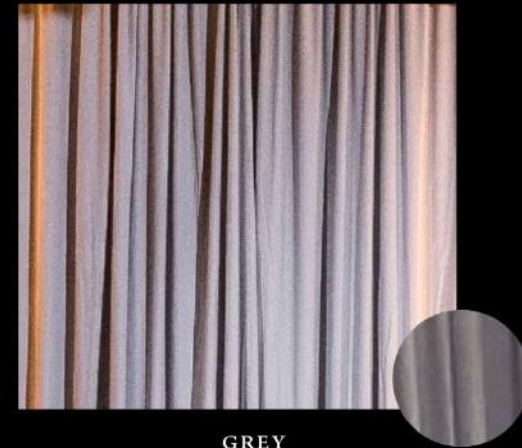
BLACK



BROWN



WHITE



GREY

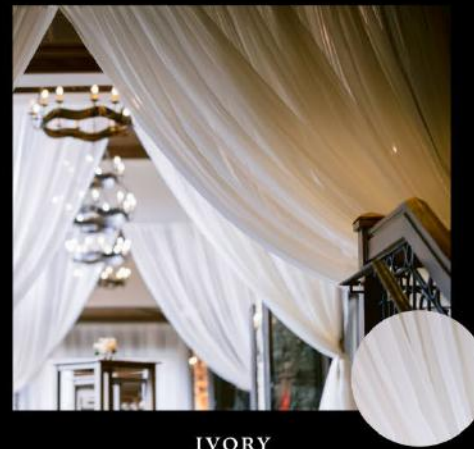
# SHEER DRAPE



BLACK



BLACK WITH TWINKLE LIGHTS



IVORY



IVORY WITH TWINKLE LIGHTS



# CUSTOM DRAPE DESIGN

Create a stunning atmosphere with custom drape designs tailored to any vision. From ceiling installations to abstract or styled draping, any fabric, hardware, or element can be sourced or custom ordered to bring your concept to life.





A stage scene with three people. On the left, a man in a dark suit is shaking hands with a woman in a dark blazer who is holding a small wooden box. On the right, a man in a light grey blazer and dark shirt is standing with his arm extended towards the woman. The background consists of white curtains with vertical green light stripes. In the foreground, the backs of several audience members' heads are visible, seated at tables with glasses and water bottles.

LIGHTING



# MEETING LIGHTING

Transform your meeting space with professional lighting that sets the tone and keeps your audience engaged.





Enhance your meetings with lighting that highlights your brand, elevates the atmosphere, and draws attention to presenters. Our team will design a lighting experience that inspires focus and engagement while maintaining an elevated aesthetic.

UPLIGHTS



STAGE WASH



CUSTOM GOBOS







# DINNERS & RECEPTIONS

Set the perfect mood with lighting that adds warmth, focus, and elegance.



Turn any dinner or reception into an experience with lighting designed to captivate, complement, and inspire. Each design is thoughtfully tailored to reflect your vision and elevate the mood from first impression to final toast.

UPLIGHTS



PINSPOTS



8' & 10' IRON HOOP



PATTERNED ROOM WASH



CANDLELIGHT CHANDELIER





JUMBO EDISON BULBS



TWINKLE LIGHTS CEILING INSTALLATION



INDOOR BISTRO LIGHTS



OUTDOOR BISTRO LIGHTS







# AFTER HOURS



# LIGHTING & SPECIAL EFFECTS

Bring your evening events to life with dynamic lighting and special effects designed to elevate the energy and atmosphere.

From high energy award ceremonies to lively celebrations, we can craft a lighting design that complements your theme and enhances the mood. Our team will tailor each element to bring depth and dimension to your event & create a truly immersive experience.



COLD SPARKS



CONFETTI CANNONS



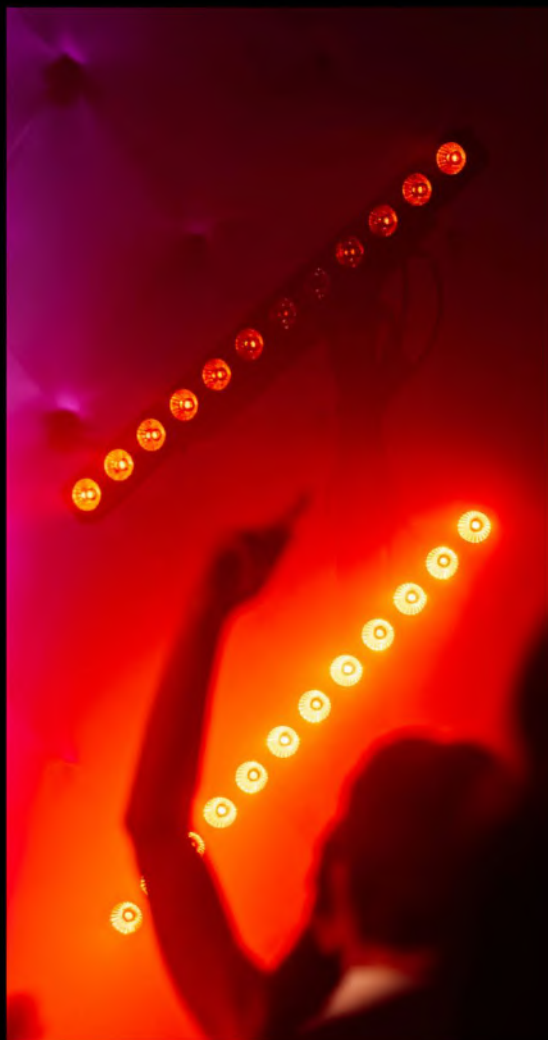
DISCO BALLS



MOVER LIGHTS



LED BARS



LASERS & HAZERS



90 DEGREE UPRIGHTS W/ LED LIGHTS







DJ EQUIPMENT





PIONEER DJ DJM-V10 6CH MIXER



PIONEER DJ CDJ-3000  
PROFESSIONAL DJ MEDIA  
PLAYER



DJ PIONEER DJ RMX1000 REMIX STATION



DJ BOOTH



# TECHNICAL & PRODUCTION SUPPORT





# TECHNICAL SERVICES

Professional on-site support to ensure your event runs flawlessly from the first cue to the final moment.



Our skilled network of technical support provides hands-on leadership, operation, and oversight across all audio, video, and virtual elements, creating a seamless experience for presenters and guests.

TECHNICAL DIRECTOR

CAMERA TECHNICIAN

PRE/POST PRODUCTION EDITING

AUDIO TECHNICIAN

VIRTUAL TECHNICIAN

PHOTOGRAPHER

VIDEO TECHNICIAN

LIGHTING TECHNICIAN

VIDEOGRAPHER



# DJ SERVICES

Create the perfect atmosphere for your guests to enhance the flow and feel of your event.



Our professional DJs craft the right mood at every stage, blending curated music with smooth transitions to keep guests engaged and comfortable.



# EVENT DESIGN SERVICES

Whether you're planning something intimate or a large-scale celebration, we provide everything you need to help bring your vision to life with florals, linens, event decor, custom signage, staging, musicians, and more.

By serving as your dedicated design coordinator and one-stop shop for all things event production, we're here to help make your event seamless and stress-free.



CUSTOM BRANDED DECOR



FLORALS



LINENS



NEON SIGNS



BALLOONS



WINDOW CLINGS



STEP & REPEAT



MARQUEE SIGNS



MUSICIANS



PHOTO BOOTH



WHISKEY TASTING



HAT MAKING

[View our Event Design Guide](#)



# ACKNOWLEDGMENTS

While we strive to showcase our unique inventory through our own equipment whenever possible, our events are the result of a collaborative effort with a talented network of vendors.

We may not hold the rights to all the featured photos, but each image represents a collaboration that brings a meeting vision to life.

If you would like to learn more about a specific vendor or photographer featured in our catalog, please don't hesitate to reach out to us for more information.

## **PHOTOGRAPHER CREDITS:**

Basin + Range Photography

Anna Pocaro Photography

Pepper Nix Photography

Erin Wilson Photography

Sparkle Photography

Angela Howard Photography

JGardiner Photography

Savanna Richardson Photography

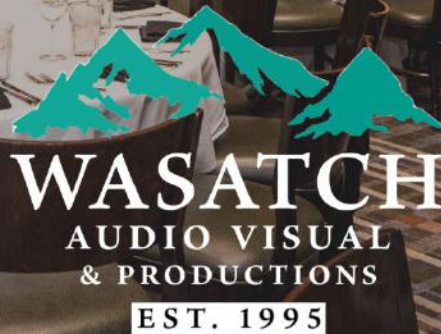
Walsh Photography

Trevor Hooper Photography

Estabrook Photography



Elevating Park City's premier events with seamless execution and personalized service for truly memorable experiences.



[www.wasatchav.com](http://www.wasatchav.com) | (435) 655-9898

4490 N. Forestdale Dr #101, Park City UT 84098