

KENRAY®

Perform Better



Accessories

KENRAY INTEGRATED SEALING SOLUTIONS

Flat and Rotary Sealing Jaws for Vertical FFS Baggers & Flow Wrappers



Kenray & Greener Corporation are proud of its partnership in the UK, Europe & North America. We have joined forces to work with USA based, Greener Corporation, the world-leading heat-dealing jaw specialists. This partnership allows Kenray & Greener field teams to become the leading experts in bags & preset outstanding solutions to customers requirements.

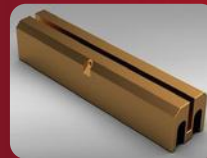
Sealing jaws are not standard, universal components; they should be designed according to the unique features of your packaging operation. When you work with Kenray and Greener Corporation, we evaluate your machinery design and condition, flexible packaging materials, seal integrity requirements, and other circumstances to provide customized sealing jaw designs and technical services that optimize package quality and productivity.



ADVANCED SERRATION DESIGN

Utilising the correct sealing jaw serration pattern design is crucial for meeting your seal integrity requirements.

Greener can match your current serration pattern or evaluate your packaging material and conditions and recommend new serration geometry that optimizes pressure and heat to improve seal quality and productivity.



SPECIALISED SEALING JAW MATERIALS

Greener recommends specialized sealing jaw materials to optimize performance and to provide desired functional characteristics that are not available with basic steel jaws.

Material options, all of which prevent rust and corrosion, include Dura-Therm for more consistent heat transfer and High Durability Stainless Steel for wear resistance.



CUSTOM DESIGN FEATURES

All Greener sealing jaws are custom designed and manufactured to meet your packaging requirements.

Features include XR™ Technology, hole punch, tear notch, seal width reduction, zipper profile, Quick-Change Jaws, Easy Seal™ Jaws, and cross platform sealing jaw standardisation.



TECHNICAL FEATURES

It takes more than just the right sealing jaws to meet your production goals. Greener Corporation works with Kenray to integrate customized sealing jaw designs with the Technical Services that you need to optimize package quality and productivity.

Support options include Problem Resolution, Installations, Line Evaluations, Training, Project Development, and Flexible Packaging Materials Support.

Kenray Forming Ltd (UK Headquarters)
Telford Way, Stephenson Industrial Estate
Coalville, Leicestershire LE67 3HE, UK

 perform@kenrayglobal.com
 +44 (0) 1530 400 100

Registered in England: No 5097462

Kenray Europe Sp. z o.o. (European Hub)
Lipie 71A, Głogów Małopolski (Woj. Podkarpackie)
36-060 Poland

 europe@kenrayglobal.com
 + 48 889 441 554

Registered in Poland: No PL 8133899127

KENRAY FLEXIBLE CHUTES

Kenray's flexible, abrasion-resistant chutes are designed for the transfer and sorting of dry foodstuffs, grain, grit, powders, wood shavings, dust and other abrasive materials.

They are manufactured from a highly durable, clear thermoplastic polyurethane with fully sealed and welded seams. All chute products are bespoke and built to your specific requirements. Kenray chutes offer greater durability than rigid options, as the flexible material resists cracking, provides longer wear and can be fitted without dismantling the packaging machinery.



The increased flexibility also minimises the risk of damage compared to rigid plastic chutes, providing a more cost-efficient solution and longer product lifespan.

KEY BENEFITS OF KENRAY CHUTES

TOUGH & FLEXIBLE

Designed to withstand demanding use, the chute material remains highly flexible while maintaining strength across frequent production cycles.

HIGH ABRASION RESISTANCE

Built from exceptionally durable polyurethane, the chutes deliver strong tear resistance and long-term reliability when handling abrasive materials.

EASY ASSEMBLY

Lightweight and adaptable, the chutes can be assembled and disassembled quickly, reducing downtime and simplifying routine maintenance.

EXTENDED LIFE-CYCLE

With an expected lifespan of 2–3 years, the chutes offer dependable performance and reduced replacement frequency in busy environments.

FOOD-APPROVED MATERIALS

Manufactured from certified, food-approved materials to support compliance and maintain safe handling of dry foodstuffs and powders.

REDUCED CONTAMINATION RISK

The fully sealed, clear construction helps minimise product contamination and supports consistent hygiene across the production process.



Kenray Forming Ltd (UK Headquarters)
Telford Way, Stephenson Industrial Estate
Coalville, Leicestershire LE67 3HE, UK

 perform@kenrayglobal.com
 +44 (0) 1530 400 100

Registered in England: No 5097462

Kenray Europe Sp. z o.o. (European Hub)
Lipie 71A, Głogów Malopolski (Woj. Podkarpackie)
36-060 Poland

 europe@kenrayglobal.com
 + 48 889 441 554

Registered in Poland: No PL 8133899127

KENRAY TUBE CLOSERS & PRODUCT STRIPPERS

Kenray have optimised the design and produced their own version of Tube Closers / Product Strippers for the TNA and other machines and in doing so have engineered out many of the inherent problems with reliability and longevity.

The principles upon which Kenray have design these strippers include:



WHY CHOOSE KENRAY TUBE CLOSERS & PRODUCT STRIPPERS?

Through extensive development and on-site testing, Kenray's enhanced designs provide measurable advantages:

- > Significant reduction in primary waste
- > Very significant reduction in Product in Seal (PIS)
- > Time interval before failure showed a 75% improvement
- > Ongoing observation demonstrates 3 to 4 times the interval level between refurbishment
- > Lower overall cost – delivering excellent value across the product lifecycle
- > Reduced Refurb costs
- > Same-day Delivery Exchange Service – minimise downtime with rapid replacement



Kenray Forming Ltd (UK Headquarters)
Telford Way, Stephenson Industrial Estate
Coalville, Leicestershire LE67 3HE, UK

 perform@kenrayglobal.com
 +44 (0) 1530 400 100

Registered in England: **No 5097462**

Kenray Europe Sp. z o.o. (European Hub)
Lipie 71A, Głogów Malopolski (Woj. Podkarpackie)
36-060 Poland

 europe@kenrayglobal.com
 + 48 889 441 554

Registered in Poland: **No PL 8133899127**

KENRAY TRAINING SERVICE

In high-speed packaging environments, efficiency and reliability rely not just on machinery but on the operators, engineers, and production managers who run it. Without the right training, even the most advanced Vertical Form Fill Seal (VFFS) and Horizontal Form Fill Seal (HFFS) machines can suffer from unnecessary downtime, quality issues, and inefficiencies.

At Kenray, we provide specialist training programmes designed to equip your team with the skills and confidence to maintain forming sets, troubleshoot common issues, and optimise packaging performance. Through hands-on learning and expert guidance, we ensure your workforce can keep production lines running smoothly, minimise waste, and improve overall efficiency.

WHY INVEST IN OPERATOR TRAINING?

Packaging machinery is complex, and without proper training, even the most advanced systems can fall short of their potential. Investing in operator training offers a host of benefits:

REDUCE DOWNTIME

Skilled operators can quickly identify and resolve issues, minimising costly interruptions.

IMPROVE PRODUCT QUALITY

Properly trained staff ensure consistent output, meeting high-quality standards every time.

BOOST EMPLOYEE CONFIDENCE

Well-trained staff work more efficiently and feel empowered to handle complex machinery.

Kenray Forming Ltd (UK Headquarters)
Telford Way, Stephenson Industrial Estate
Coalville, Leicestershire LE67 3HE, UK

 perform@kenrayglobal.com

 +44 (0) 1530 400 100

Registered in England: **No 5097462**

Kenray Europe Sp. z o.o. (European Hub)
Lipie 71A, Głogów Malopolski (Woj. Podkarpackie)
36-060 Poland

 europe@kenrayglobal.com

 + 48 889 441 554

Registered in Poland: **No PL 8133899127**

KENRAY TECHNICAL SUPPORT

Here at Kenray, we pride ourselves on delivering excellent customer service, and our technical team are no exception. We provide a wide range of support services – from technical assistance over the phone and virtual Teams calls to onsite visits. Our team has vast, wide-ranging applications knowledge and expertise, enabling us to develop innovative ways of problem-solving, achieving your end goals, and supporting your business and production lines.

THE SERVICES WE OFFER

REDUCE DOWNTIME

Comprehensive evaluation of your former fleet, where we see your lines running and assess your fleet operating in a production environment. We etch the sets with unique codes so we can identify them for future reference and provide both a full and summary report with recommendations on how we can improve your fleet and return them to the recommended operating standards. This helps to reduce downtime across your production lines and ensures bag quality is kept to a high standard. Once the report has been sent, we will liaise with you on the recommendations we have identified and work together on booking in the next phase, which is the follow-up to the line evaluation.

EXTERNAL REFURBISHMENT / FOLLOW-UP LINE EVALUATION

Whether you have recently had a line evaluation completed or have a number of sets that need refurbishment but cannot be released, our engineers can be scheduled to visit your site to carry out the recommended work. They can fit consumable parts, carry out repairs to formers and tubes, or replace those formers and tubes that are beyond refurbishment. Full RAMS assessments will be completed, and Safe Contractor certification is available.

The final stage of the process, and to maintain the operating levels your fleet is now at, we offer a three-tier service package. This is designed around you and your needs – please see our 'Service Contract' section for more details.

INTERNAL REFURBISHMENT

Many of our customers find sending in forming sets for refurbishment extremely beneficial for maintaining their forming fleet all year round. By sending in your set, we will assess and evaluate the work required, provide a comprehensive quote detailing what's needed to bring it up to the required operating standards, and give you a lead time for its return. We will also ensure it is cleaned and polished. We offer a collection and delivery service, making this process as streamlined as possible for you.

COMMISSIONING IN SETS


Should you place an order for new forming sets with us, whether it is for one or multiple sets, you can request a quote from one of our highly skilled service engineers to commission the set(s) upon delivery. This ensures a seamless transition to the new set and gives peace of mind.

TECHNICAL VISITS / MEETINGS

Whether you have technical issues on a line or require our applications knowledge for a planning meeting, we can offer our expertise by coming to your site and providing assistance or attending a meeting via Teams.

Kenray Forming Ltd (UK Headquarters)
Telford Way, Stephenson Industrial Estate
Coalville, Leicestershire LE67 3HE, UK

 perform@kenrayglobal.com

 +44 (0) 1530 400 100

Registered in England: **No 5097462**

Kenray Europe Sp. z o.o. (European Hub)
Lipie 71A, Głogów Malopolski (Woj. Podkarpackie)
36-060 Poland

 europe@kenrayglobal.com

 + 48 889 441 554

Registered in Poland: **No PL 8133899127**

- > Forming sets & Repairs
 - > Former coatings
- > Horizontal Flow Wrapper Toolings
- > Tube Closers & Product Strippers
 - > Cutting knives
 - > Flexible Chutes
 - > Sealing jaws
 - > Draw-down belts
 - > Former accessories
- > Training & Technical Service



The world's biggest brands and OEMs choose KENRAY formers for better performance and profit.

Shouldn't you?

KENRAY are recognised as the global authority on the development and manufacture of formers and solutions for the packaging industry.

Our key area of expertise is the innovative design in forming sets for vertical form fill and seal packaging machines. Renowned for value-added service, consistency of design, extensive testing procedures and accuracy in manufacturing, KENRAY are the partners of choice for companies around the world within the food and pharmaceutical packaging sector.

Our forward-thinking engineering ensures interchangeability and repeatability. It is this precision that continues to endorse KENRAY'S position as the Global Leader in this market today.

KENRAY. Perform Better.

KENRAY

KENRAY®

