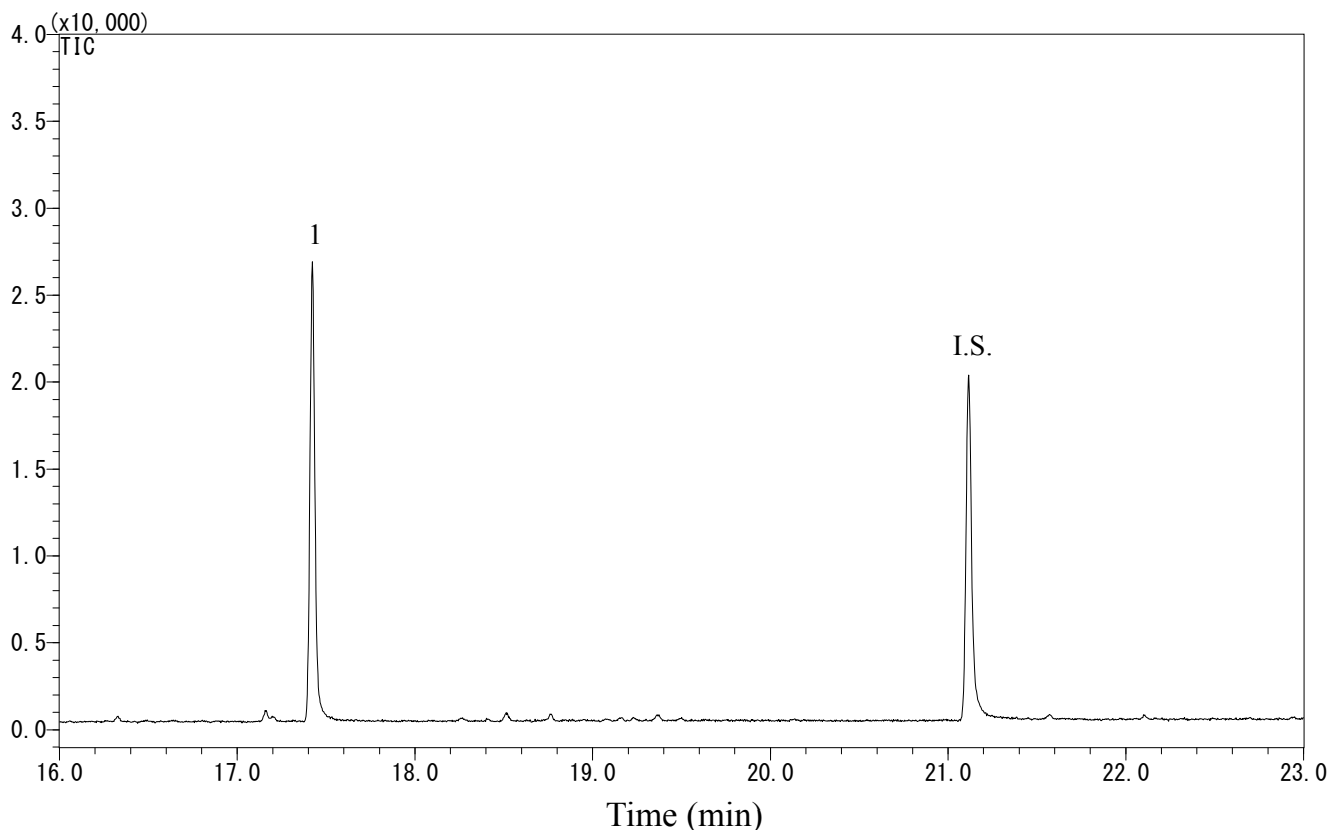


InertSearch™ for GC

InertCap® Applications

4-*t*-Octylphenol

Data No. GA 256-0644



Conditions

System	: GC-MS	Analyte	:
Column	: InertCap 5MS/Sil 0.25 mm I.D. x 30 m df = 0.25 µm	1. 4- <i>t</i> -Octylphenol (0.1 µg/mL)	
Col. Cat. No.	: 1010-18642	I.S. 4- <i>n</i> -Nonylphenol- <i>d</i> 4 (0.1 µg/mL)	
Col. Temp.	: 50 °C (1 min hold) - 8 °C/min - 280 °C		
Carrier Gas	: He 36.3 cm/s		
Injection	: Splitless 1min 250 °C		
Detection	: MS SIM Interface Temp. 280 °C		
Sample Size	: Analyte in Dichloromethane 1 µL		

InertSearch™ for GC

InertCap® Applications

4-*t*-Octylphenol

Data No. GA 256-0644

